

BACKGROUND INFORMATION DOCUMENT

Utilization of Borrow Pits
Chris Hani District Municipality
Road: DR08600

The Department of Roads & Public Works



Report Number: 2011 - R571
October 10, 2011



Biotechnology & Environmental Specialist Consultancy cc

PO Box 8241, Nahoon, 5210, East London, South Africa
9 Douglas Road, Vincent, 5241, East London, South Africa
Telephone 043 726 4242; Facsimile: 043 726 3199
E-mail: info@besc.co.za; Website: <http://www.besc.co.za>

Prepared exclusively for

The Department of Roads & Public Works

by

Biotechnology and Environmental Specialist Consultancy cc

PO Box 8241, Nahoon, 5210, East London, South Africa
9 Douglas Road, Vincent, 5247, East London, South Africa

Telephone 043 726 4242; Facsimile: 043 726 3199

E-mail: info@besc.co.za; Website: <http://www.besc.co.za>

Contents

1 Proposal Release Notice 4

2 Project Description 5

 2.1 Introduction 5

 2.2 The Study Area 6

 2.3 Current Land Use 7

 2.4 Surrounding Land Use 7

 2.5 Geology 7

3 Public Participation Process 8

 3.1 Interested & Affected Parties 8

 3.2 Summary of Public Participation Process 8

4 Appendix A: Interested & Affected Party Registration Form 9

5 Appendix B: Key Members of the Development & Consultants Team 9

6 Appendix C: Photographs of site 10

7 Appendix D: Competency of Environmental Professional 11

List of Figures

Figure 1: The location of the borrow pit. 6

Figure 2: Aerial Image - Road DR08600 & associated BP's. 7

Figure 3: Borrow Pit # 08600-BP01. 10

List of Tables

Table 1: Main members of the Development & Consultants Team. 9

1 Proposal Release Notice

<i>Proposal Status</i>	<i>Date</i>	<i>Authorised</i>
Internal BID	October 10, 2011	Mr. Conroy van der Riet
Final BID	October 10, 2011	Ms. Lee-Anne Proudfoot

This Background Information Document has been prepared by BESC the trading name of Biotechnology and Environmental Specialist Consultancy cc, with all reasonable skill, care and diligence within the terms of the Contract with the client, incorporating our Standard Terms and Conditions of Business and taking account of the resources devoted to it by agreement with the client.

BESC disclaims any responsibility to the client and others in respect of any matters outside the scope of the above.

The Background Information Document is exclusive to the client and the described project. BESC accepts no responsibility of whatsoever nature to third parties to whom this Background Information Document, or any part thereof, is made known. Any such persons or parties rely on the report at their own risk.

2 Project Description

2.1 Introduction

BESC were appointed by the Department of Roads & Public Works as Independent Environmental Consultants for the preparation of an Environmental Management Plan as defined and required by the Regulations in terms of the Minerals and Petroleum Resources Development Act (No. 28 of 2002) as published in the Government Gazette 26275 dated 23 April 2004.

The project involves the utilization of 1 Borrow Pit (BP) in order to obtain road construction materials for the upgrading/re-surfacing of road DR08600 located between KuLiweni Village and Lady Frere, Eastern Cape.

The utilization of these BP's forms part of a larger project to upgrade/re-surface a total of 6 roads located throughout the Chris Hani District Municipality. The permitting of the materials sources required for the project will be undertaken in accordance with the Minerals and Petroleum Resources Development Act (M&PRDA) (No. 28 of 2002).

2.2 The Study Area

The borrow pits are located along road DR08600 located between KuLiweni Village and Lady Frere, Eastern Cape.

The location of the borrow pit is as follows:

Road #	Borrow Pit #	Latitude	Longitude
DR08600	08600_BP01	31°44'7.90"	27°20'28.70"

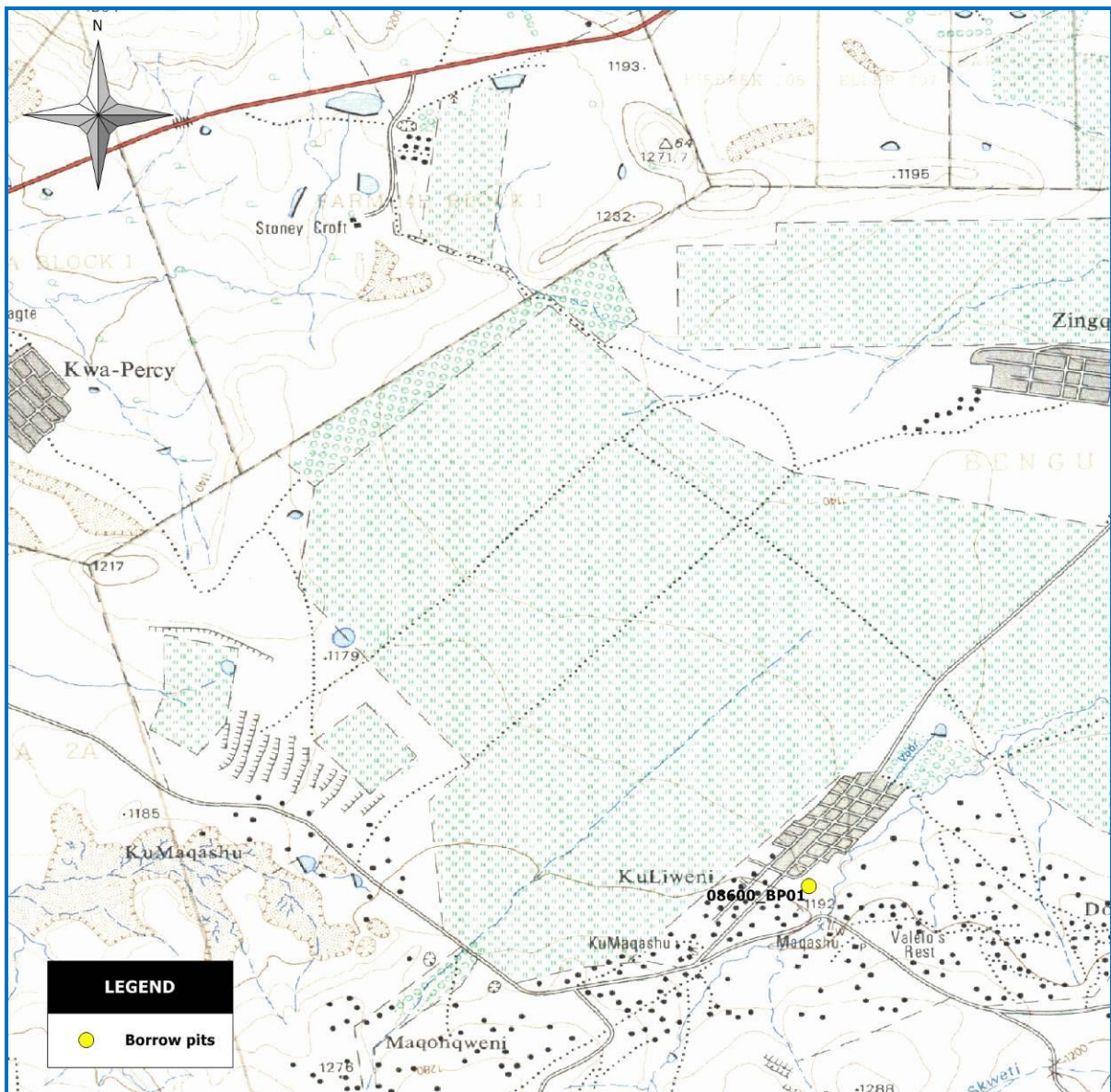


Figure 1: The location of the borrow pit.

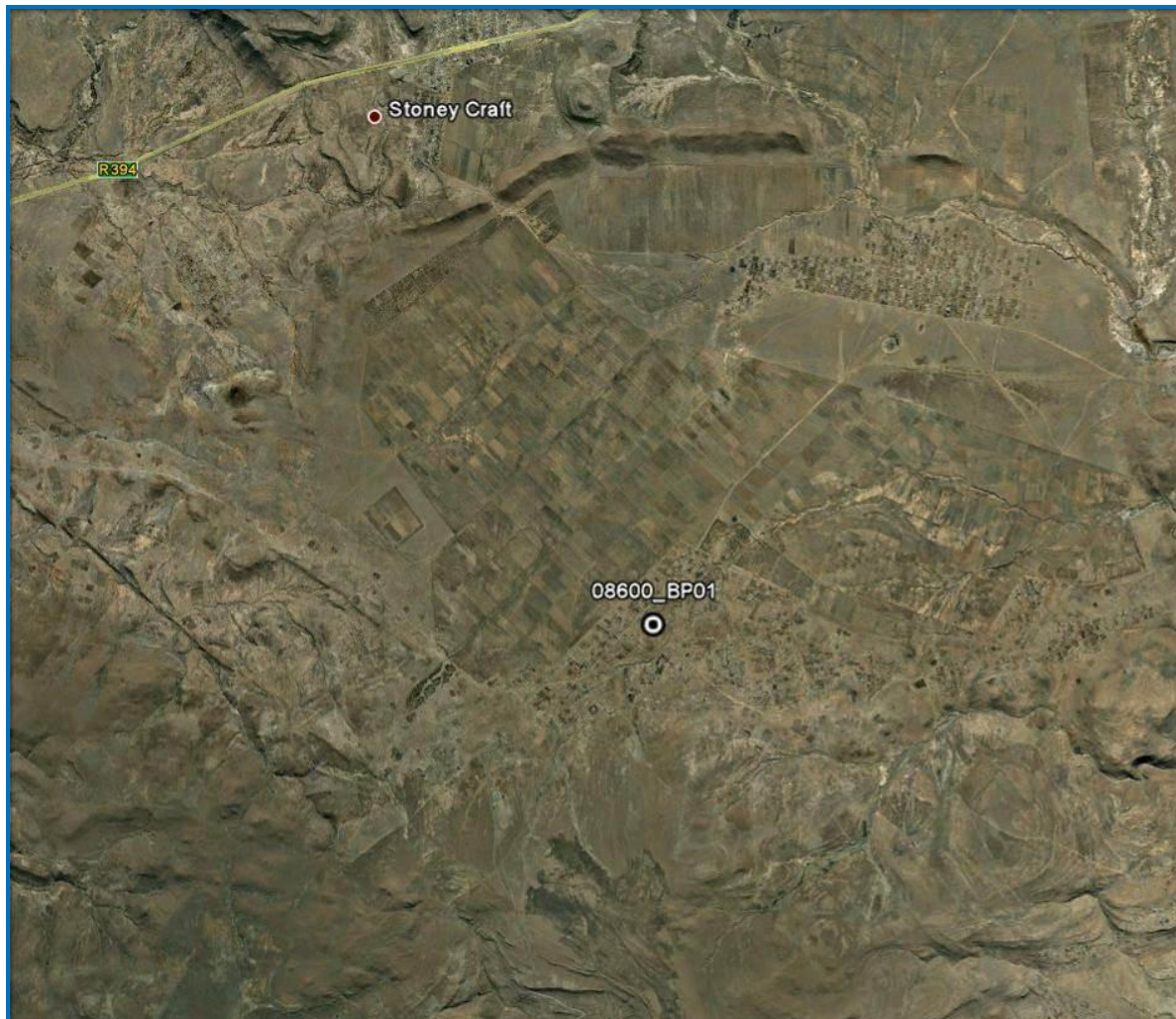


Figure 2: Aerial Image - Road DR08600 & associated BP's.

2.3 Current Land Use

The borrow pit is existing and was previously used for road construction/upgrading activities.

2.4 Surrounding Land Use

The surrounding land use mainly consists of Communal Land and some nearby dwellings.

2.5 Geology

The area falls under the Burgersdorp Formation which belongs to the Tarkastad Subgroup falling under the Beaufort Group. The Burgersdorp formation consists of alternating fine-grained lithofeldspathic sandstone and greyish - red mudstone lithosomes, which constitute the relatively mudstone-rich upper part of the Tarkastad Subgroup.

3 Public Participation Process

3.1 Interested & Affected Parties

The term Interested and Affected Party (I&AP) refers to individuals or groups concerned with or affected by an activity and its consequences. These include the authorities, local communities, investors, work force, customers and consumers, environmental interest groups and the general public.

I&AP's are responsible to:

- Provide input and comments during various stages of the EIA process. Comments should aim to identify issues and alternatives to be considered and assist in assessing and mitigating impacts.
- Provide input and comments within the specified timeframes as specified by the consultant and the relevant authority.


3.2 Summary of Public Participation Process

- Identification of parties that will be affected by the proposed development or have an interest in the proposal under consideration.
- Provide information, in the form of this Background Information Document, to I&AP's in order to provide them with an opportunity to participate in the public participation process and submit comments highlighting issues of concern.
- Placement of Legal Notice in respective newspapers.
- Placement of signboards for groups of Borrow Pits at main intersections/entrances of roads to be upgraded.
- Notification of the Relevant Municipal and Government Departments
- Notification of the Municipal Ward Councillors
- Notification of the Department of Rural Development as the custodian of the communal land
- Notification of relevant landowners of private land

4 Appendix A: Interested & Affected Party Registration Form

Electronic Adobe PDF Version Only

DOUBLE CLICK the PAPER CLIP to access the I&AP Registration Form.



Hardcopy/Paper Version - See overleaf

5 Appendix B: Key Members of the Development & Consultants Team

Table 1: Main members of the Development & Consultants Team.

Name	Department/Division	Telephone	Fax
Dr. Malcolm Logie	BESC	043 726 4242	043 726 3199
Ms. Lee-Anne Proudfoot	BESC	043 726 4242	043 726 3199
Mr. Conroy van der Riet	BESC	043 726 4242	043 726 3199
Mr. Deon Louw	Control Civil Services cc	043 748 2568	043 748 2718
Mr. Lazola Khetho	Vela VKE Consulting Engineers	043 721 1910	043 721 1916
Mr. CJ Xoko/Mr. C Boshoff	EC Department of Roads & Public Works	043 604 7636	086 532 3972

6 Appendix C: Photographs of site



Figure 3: Borrow Pit # 08600-BP01.

7 Appendix D: Competency of Environmental Professional

Dr. Malcolme Logie Principal and Managing Director

Malcolme Logie has over 12 years experience in the field of Environmental Management with extensive experience in the fields of Industrial Environmental Management; Safety, Health & Environmental Management Systems; and Environmental Auditing and Assessments (environmental site assessments, environmental impact assessments, systems certification), in South Africa, Mocambique, Namibia, Angola, Ghana, Zambia, Egypt, The Czech Republic, The Slovak Republic and Romania. Malcolme has wide-ranging experience primarily in the following sectors:

- Automotive sector
- Beverages
- Chemicals & chemical products
- Civil and mechanical engineering
- Electricity & water supply
- Metals refining & processing
- Mining & quarrying
- Pulp & paper
- Telecommunications

Malcolme's project experience largely falls into the following broad areas:

Safety, Health & Environmental Management Systems

Malcolme's experience includes management system design and implementation and also certification audits across a wide range of industrial and mining sectors in South Africa, Mocambique, Angola, Zambia and Romania.

Environmental Site Assessments

Malcolme has been the project leader on many Phase I and II ESA's that have been undertaken in accordance with the ASTM standards, at several industrial facilities in South Africa.

Environmental Auditing

Malcolme's auditing experience includes ISO 14001, OHSAS 18001 and ISO 9001 certification level audits; legal compliance, and environmental performance audits across a wide range of industrial and mining sectors in South Africa, Mocambique, Namibia, Angola, Ghana, Zambia, Egypt, The Czech Republic and Romania.

Environmental Impact Assessments

Malcolme has managed a broad range of environmental impact assessments ranging from: industrial facilities, telecommunication networks, electrification networks, transportation infrastructure, waste sites and water supply.

Professional Affiliations & Registrations

- Registered as a Professional Natural Scientist (Environmental Scientist) with the South African Council of Natural Scientific Professions (SACNASP).
- Professional Member of the South African Institute of Ecologists and Environmental Scientists
- Certification Board of Environmental Assessment Practitioners of South Africa
- International Association of Impact Assessors
- Royal Society of South Africa
- South African Association of Botanists
- Phycology Society of South Africa
- South African Auditor & Training Certification Association (SAATCA) – EMS Verification Auditor
- Bureau Veritas Quality International – Lead EMS Auditor

South African Council of Natural Scientific Professions

Malcolme is a member of the Education Committee of South African Council of Natural Scientific Professions (SACNASP) for the registration of Professional Natural Scientist.

Rhodes University Investec Schools of Business

Malcolme sits on the Advisory Board for the Rhodes University Investec Schools of Business which provides advice and directs the strategic planning and continual development of the business school.

Fields of Competence

- Safety, Health & Environmental Management Systems
- Industrial Environmental Management
- Environmental Site Assessments

- Environmental Impact Assessments

Education

- PhD (Biotechnology) 1995
- MSc (Botany), 1992
- BSc Honours (Botany), 1990
- BSc (Plant Science & Biochemistry), 1989

Key Projects

Recent key projects include:

South African Breweries Millers (SAB Miller)

1. Ursus Breweries, Romania (SAB Miller), where Malcolme is responsible for the development and implementation of a Safety, Health & Environmental Management System at four breweries and a depot.
2. Plzeňský Prazdroj, Czech Republic (SAB Miller), where Malcolme is responsible for the development and implementation of an integrated Safety, Health & Environmental Management System at three breweries.
3. Dreher Sörgyárak Zrt, Hungary (SAB Miller), where Malcolme is responsible for the development and implementation of an integrated Safety, Health & Environmental Management System at this brewer.
4. Ibhayi Brewery (Port Elizabeth) where an Environmental Management System was designed and implemented at this new state-of-art brewery. During the construction of the brewery Malcolme reviewed all the plans to ensure environmental sustainability

BHP Billiton (MOZAL), Mocambique

Malcolme designed and co-ordinated the implementation of the Environmental Management System at this BHP Billiton aluminium smelter in Maputo, and continues to service this organization environmental management needs.

Coca-Cola Company

1. Malcolme is the appointed SHE Management System Consultant to Coca-Cola Company Southern Africa, responsible for advising of the implementation of a SHE MS compliant with ISO 14001:2004, OHSAS 18001:1999 and the Coca-Cola Worldwide E3 programme.
2. Malcolme is guiding to process for the development and implementation of an integrated SHE Management System at Coca-Cola Fortune (Polokwane & Bloemfontein). The management system is based on the requirements of ISO 14001:2004 and OHSAS 18001:1999.

Lonmin Platinum, South Africa

Malcolme co-ordinated the design and implementation of the Environmental and Quality Management System at Lonmin's Western Platinum Refinery in Johannesburg, and also revised and re-establish the EMS at this platinum producers smelter and base metal refinery near Rustenburg.

Dorbyl Automotive Technologies, South Africa.

For the past eight years Malcolme has been the exclusive environmental management and environmental management systems consultant to this automotive components producer. The production facilities include: foundries, forges, machine shops and manufacturing units.

Telkom SA Ltd, South Africa.

Malcolme was instrumental in establishing the internal environmental assessment guidelines for this national telecommunication service provider, for the placement of telecommunication masts and associated infrastructure. He has also undertaken more than 120 environmental impact assessments of individual telecommunication masts throughout South Africa.

Environmental Site Assessments

Malcolme has been the project leader on many Phase I and II ESA's that have been undertaken in accordance with the ASTM standards, at several industrial facilities in South Africa.

SHEQ Management Systems Auditing

Malcolme has in excess of 8600 hours of SHEQ Management Systems auditing. He has audited companies in South Africa, Mocambique, Namibia, Angola, Ghana, Zambia, Egypt, The Czech Republic, The Slovak Republic and Romania.

European Scope of Accreditation

Malcolme has competency in the following Industrial Sectors:

1	Agriculture, forestry, fisheries	20	Ship building
2	Mining & quarrying	21	Aerospace
3	Beverages & foodstuff industries	22	Other transport equipment (automotive, rail)
4	Textile industries	23	Manufacturing (not classified elsewhere)
5	Leather & leather products	24	Recycling
6	Wood industries	25	Electricity supply
7	Pulp, paper & paper products	26	Gas supply
10	Mineral-oil processing	27	Water supply
12	Chemicals & chemical products	28	Construction
13	Pharmaceuticals	30	Hotels & restaurants
14	Rubber & plastic goods	31	Transport & communication
15	Glass, ceramics, processing of minerals & ores	34	Research & development
16	Production of cement, lime, gypsum & concrete, lime and gypsum products	35	Business services
17	Metals refining & processing, & production of metals	37	Education
18	Mechanical engineering	39	Other social services

**Ms. Lee-Anne Proudfoot
Senior Environmental Consultant
MSc (Marine Biology), Rhodes**

Lee-Anne Proudfoot has experience in the fields of Marine and Coastal Ecology, Geographical Information Systems (GIS), Environmental Impact Assessments, Environmental Site Assessments, Environmental Management Plans, Environmental Auditing, Visual Impact Assessments, Aquatic Impact Assessments and Project Management.

Lee-Anne's project experience includes:

Environmental Impact Assessments

Lee-Anne assisted in and managed a broad range of scoping & environmental impact assessments ranging from: agri-industrial & industrial facilities, residential & resort developments, golf estates, renewable energy technologies, storm water management, water supply, desalinisation and sewage.

Environmental Site Assessments

Lee-Anne has experience in site assessments, field sampling & monitoring, permit applications and in the compilation of reports for prospective land buyers.

Environmental Management Plans

Lee-Anne has experience in compiling and monitoring the Environmental Management Plans for a wide range of developments.

Environmental Auditing

Lee-Anne has experience in auditing the environmental compliance of and compiling environmental auditing reports.

Geographical Information Systems (GIS)

Lee-Anne has experience in using ArcView, Idrisi and Manifold software in assessing & producing maps, site plans, aerial photographs, etc.

Visual Impact Assessments (VIA)

Lee-Anne has experience in conducting VIA's and compiling VIA reports.

Aquatic Impact Assessments (AIA)

Lee-Anne has experience in conducting SASS5 Bio-rapid assessments for Aquatic Impact Assessments.

Project Management

Lee-Anne has experience in managing projects for a wide range of developments.

Professional Affiliations & Registrations

- Registered as a Professional Natural Scientist (Environmental Scientist) with the South African Council of Natural Scientific Professions (SACNASP).
- International Association of Impact Assessors, South Africa

Fields of Competence

- Environmental Impact Assessments
- Environmental Site Assessments
- Environmental Management Plans
- Environmental Auditing
- Geographical Information Systems (GIS)
- Visual Impact Assessments (VIA)
- Aquatic Impact Assessments (AIA)
- Project Management

Education

- M.Sc. (Marine Biology), Rhodes, 2006
- B.Sc. Honours (Marine Biology), Rhodes, 2003
- B.Sc. (Zoology and Ichthyology), Rhodes, 2002

Key Projects

African Dune Investments (Pty) Ltd

Lee-Anne is currently undertaking the environmental impact assessment and managing the environmental authorization process for the proposed Woodlands Golf Estate.

ABSA Development Company/Bigen Africa

Lee-Anne was the project manager for the environmental management component of the Albany Regional Water Services Project and conducted the environmental impact assessment

African Dune Investments (Pty) Ltd

Lee-Anne managed the scoping assessment for a proposed Wind Turbine Farm.

Amatola Green Power (Pty) Ltd

Lee-Anne managed and conducted the environmental impact assessment for the proposed extraction of landfill gas from three BCM Landfill Sites for the purposes of electricity generation.

The Environmental Law Consultancy

Lee-Anne assisted in the compilation of a Legal Register for a Chrome Tanning Salts Plant in Merebank, with her focus pertaining to the relevant Occupational Health and Safety legislation.

KRAFT Foods SA

Lee-Anne reviewed and assisted in the preparation of an Environmental Impacts and Aspects Register, inclusive of the significance assessment and proposed mitigation/management strategies for all the Kraft Foods SA – Tunney Plant’s activities for purposes of implementation of an Environmental Management System.

Element Consulting

Lee-Anne is currently undertaking the environmental impact assessment and environmental management plan for the construction of roads and utilisation of borrow pits in the Eastern Cape

SAB (PTY) LTD

Lee-Anne conducted the phase 1 Environmental Site Assessment for a prospective land purchase.

International Finance Corporation

Lee-Anne co-ordinated and reviewed the specialist environmental studies required for the environmental impact assessment for the proposed Kalakundi Copper & Cobalt Mine in the Democratic republic of Congo.

Carpano Investments (Pty) Ltd

Lee-Anne was responsible for the environmental management component of the Spatial Development Framework for the proposed Rock Cliff development area south-east of East London

Kempston Leisure (Pty) Ltd

Lee-Anne managed the environmental authorization process for a proposed motor city

Edcot Trust (Pty) Ltd

Lee-Anne managed the environmental authorization process for a proposed motor city

Kempston Leisure (Pty) Ltd

Lee-Anne is the Environmental Control Officer for the proposed motor city development.

Wild Coast Ski Boat Club

Lee-Anne undertook the renewal application for a boat launching permit and prepared the requested environmental management plan for the Hole in the Wall Launch Site

Wild Coast Fishing Co-operative

Lee-Anne conducted and managed the environmental authorization process for a proposed aquaculture facility

Wild Coast Fishing Co-operative

Lee-Anne conducted and managed the scoping assessment for a proposed fish processing factory

Alvitex 103 (Pty) Ltd

Lee-Anne assisted on the environmental impact assessment for the proposed resort development.

Rakel (Pty) Ltd

Lee-Anne managed the environmental impact assessment for desalination plants servicing the proposed resort developments

Alvitex 103 (Pty) Ltd

Lee-Anne managed the environmental impact assessment for desalination plants servicing the proposed resort developments

Leisure Homes for Senior Citizens

Lee-Anne managed the environmental authorization process for the proposed extension of a retirement village

Fire Ring

Lee-Anne was involved in the compilation of a site assessment report for the prospective purchasing of land

Blue Beacon Investments (Pty) Ltd

Lee-Anne conducted and managed the environmental authorization process for the Connemara Housing Complex

Buffalo City Municipality – Waste Management

Lee-Anne assisted in the environmental audit process on the Buffalo City Regional Waste Disposal Site, focussing on issues such as operations and water-quality monitoring.

Buffalo City Development Agency

Lee-Anne was responsible for the environmental assessment component of the Nahoon Mouth and Sports Precinct Local Spatial Framework Plan.

Southern Palace Investments 414 (Pty) Ltd

Lee-Anne conducted and managed the scoping and environmental impact assessment for environmental authorization for a proposed mixed use development for the purposes of a hospital, retirement village and church.

Nuffield Trust

Lee-Anne conducted and managed the environmental impact assessment for the environmental authorization of a proposed Yellowwood Heights Residential Development

Riverleigh VII

Lee-Anne conducted and managed the Scoping Assessment for a proposed mixed use development for the purposes of entry level residential, office and retail.

True Group Building (Pty) Ltd

Lee-Anne conducted and managed the environmental impact assessment for the environmental authorization of a proposed light industrial site.

Mr. Conroy van der Riet
Senior Environmental Consultant
BSc Honours (Environmental Geography)

Conroy van der Riet has more than 4 years experience in the fields of Marine and Terrestrial Ecology, Geography, Geographical Information Systems (GIS), Mining, Environmental Impact Assessments, Environmental Site Assessments, Environmental Management Plans, Environmental Management Systems, Environmental Auditing, Visual Impact Assessments, Site Rehabilitation, Water Use Licensing, Waste Licensing and project management throughout South Africa.

Conroy's project experience includes:

Environmental Impact Assessments

Conroy assisted in and managed a broad range of environmental impact assessments ranging from: agri-industrial & industrial facilities, residential & resort developments, golfing estates, informal settlement planning & formalisations, storm water management, water supply, desalination and sewage.

Environmental Site Assessments

Conroy has experience in many Phase I and II site assessments in accordance with ASTM Standards, SASS 5 freshwater aquatic systems assessments, field sampling & monitoring, permit applications and in the compilation of reports for prospective land buyers.

Environmental Management Plans

Conroy has experience in compiling and monitoring the Environmental Management Plans for a wide range of developments.

Environmental Management Systems

Conroy's experience includes Environmental Management System design and implementation, legal compliance audits, and risk assessments in compliance with relevant ISO Standards.

Environmental Auditing

Conroy's auditing experience includes ISO 14001, OHSAS 18001 and ISO 9001 certification level audits; legal compliance, and environmental performance audits across a wide range of industrial sectors in South Africa.

Geographical Information Systems (GIS)

Conroy has experience in using ArcView, Idrisi and Manifold software in assessing & producing environmental sensitivity maps, site plans, aerial photographs, satellite imagery, etc.

Visual Impact Assessments (VIA)

Conroy has experience in conducting VIA's and compiling VIA reports.

Site Rehabilitation

Conroy has experience in the rehabilitation of a variety of disturbed areas.

Water Use Licensing

Conroy has experience in a range of Water Use License application and related projects.

Waste Licensing

Conroy has experience in Waste License Applications for a range of projects

Project Management

Conroy has experience in managing projects for a wide range of developments.

Professional Affiliations & Registrations

- Registered as a Candidate Natural Scientist (Environmental Scientist) with the South African Council of Natural Scientific Professions (SACNASP).
- International Association of Impact Assessors, South Africa

Fields of Competence

- Environmental Impact Assessments
- Environmental Management Plans
- Environmental Site Assessments
- Environmental Management Systems
- Environmental Auditing
- Geographical Information Systems (GIS)
- Visual Impact Assessments (VIA)
- Site Rehabilitation
- Water Use Licensing
- Waste Licensing
- Project Management

Education

- BSc Hons (Environmental Geography) NMMU, 2006
- BSc (Zoology and Geography) NMMU, 2005

Employment Record

- Biotechnology & Environmental Specialist Consultancy cc: 2006 - Present:

Key Projects**PG Bison**

Conroy assisted in the preparation of an Environmental Aspects Register, inclusive on significance assessment and proposed mitigation/management strategies for all the PG Bison activities at the board plant in Ugie, Eastern Cape for purposes of implementation of an Environmental Management System.

Kraft Foods SA

Conroy conducted the Phase I Environmental Site Assessment in accordance with the ASTM standards, and assisted in the preparation of an Environmental Aspects Register, inclusive on significance assessment and proposed mitigation/management strategies for all the Kraft Foods SA - Tunney Plant's activities for purposes of implementation of an Environmental Management System.

Goodyear SA

Conroy managed the Scoping process for the proposed installation of Underground Storage Vessels at the Goodyear SA factory.

Pragma Africa (Pty) Ltd

Conroy managed the environmental authorization process for the removal of underground fuel storage vessels.

Buffalo City Municipality - Waste Management

Conroy assisted in the environmental audit process on the Buffalo City Regional Waste Disposal Site, focussing on issues such as construction, operations and air-quality monitoring.

SANRAL

Conroy is managed the environmental authorization process for the proposed improvement of National Route 02, Section 18 for the South African National Roads Agency Limited. Conroy is also managing the mining permit applications of the borrow pits for the proposed road improvement, and has been appointed to act as Environmental Control Officer for the implementation of the project.

Bigen Africa (Pty) Ltd & Ndlambe Local Municipality

Conroy managed the environmental authorization process for the proposed Port Alfred Waste Water Treatment Works upgrade project. Conroy has also been appointed to act as the Environmental Control Officer for the implementation of the project.

Uhambiso

Conroy managed the environmental authorization and Waste License Application process for the proposed Tsolo Waste Water Treatment Works upgrade project.

Chris Hani District Municipality - Bulk Services

Conroy is currently managing the environmental authorization and Waste License Application process for the proposed upgrading of the Bulk Services for the proposed Rathwick Development, Queenstown, inclusive of the Waste Water Treatment Works, Water Treatment Works, Stormwater and associated infrastructure.

Chris Hani District Municipality - Water Supply

Conroy is currently managing the environmental authorization process for the Water Supply Backlog projects in the Cluster 2 area of the Chris Hani District Municipality.

Alvitex 103 (Pty) Ltd

Conroy managed the environmental authorization process for a proposed golfing estate development and assisted in the environmental authorization for the sewage works servicing the proposed resort developments, and.

African Dune Investments

Conroy assisted in the environmental authorization for the proposed golf estate development.

Thynk Property Partners (Pty) Ltd

Conroy managed the environmental authorization process for the proposed retail & residential development.

Eskom

Conroy is currently managing the environmental authorization process for the proposed upgrading of the Qumbu Substation and associated infrastructure.

Buffalo City Municipality - Planning and Economic Development

Conroy managed the environmental authorization for various settlement planning & formalization projects in the Amathole district.

The Diocese of Grahamstown

Conroy managed the environmental authorization for the proposed rezoning and residential development of the St Lukes Mission Land.

Bunker Hills Investments (Pty) Ltd

Conroy managed the environmental management plan for the proposed residential development.

Rakel (Pty) Ltd

Conroy assisted in managing the environmental authorization for the proposed residential development and assisted in the environmental impact assessment for the proposed desalination plant servicing the proposed residential development.

Rapitrade (Pty) Ltd

Conroy assisted in managing the environmental management plan for the proposed residential development and managed the applications to the South African Heritage Resources Agency (SAHRA) and the Department of Water Affairs & Forestry.

Golden Falls (Pty) Ltd

Conroy assisted in the environmental authorization and the environmental management plan for the proposed residential development.

Beautiful Connections (Pty) Ltd

Conroy managed the environmental authorization for a proposed wildlife resort in the Queenstown area and the proposed development of Eco-Type chalets in the East London area.

Riverleigh VII cc

Conroy managed the environmental authorization process for the proposed warehousing and light industrial manufacturing processes developments.

Purple Moss 29 (Pty) Ltd

Conroy managed the rehabilitation of the Quenera River bank on the site and the environmental authorization process for the proposed township establishment consisting of business, mixed use and residential areas.

Silicon Smelters (Pty) Ltd (FerroAtlantica)

Conroy managed the environmental impact assessment process and CAPCO permit applications for various charcoal burners in the East Cape, West Cape, Free State, North-West, Limpopo and Gauteng Provinces.

Wild Coast Fishing Co-operative

Conroy assisted in the environmental authorization for the proposed fish works factory.

ELGC

Conroy managed the EIA Process and prepared the rehabilitation management plan for the proposed realignment of the 6th fairway & minor upgrades in order to upgrade the East London Golf Club (ELGC).

THIS PAGE INTENTIONALLY LEFT BLANK

END