

## **2012-02-06 RIM OPS REPORT No. 6: PROPOSED REPOSITIONING OF DOOR ON GRIDLINE 'A'.**

### **INTRODUCTION**

The conversion of the Old Power Station [OPS] to house the RIM artefacts kept on the island proposes the repositioning of the door, along gridline 'A', on the southern façade of the main double volume building built ca 1941.

The door would be moved from its position on the SW side of the wall to the centre underneath the central window.

A wooden post had been observed approximately in the position of the proposed new doorway. It was not clear as to what the wooden post supported.

This was pointed out at the consultants meeting of 26 January 2012.

A follow up site visit on 30 January 2012 was made, inter alia, to confirm the position of the wooden post.

### **OBSERVATION**

The wooden post is approximately 20 cm broad and 5 cm wide and made from Oregon pine.

The post supports the lintel of the door opening of the central wall in the later extension, which in turn supports a wooden beam that appears to support the roof trusses along the length of the wall.

The post appears to be loosely placed on a wooden base and not embedded in the concrete floor.

The interior central wall would be removed to facilitate the new design proposal.

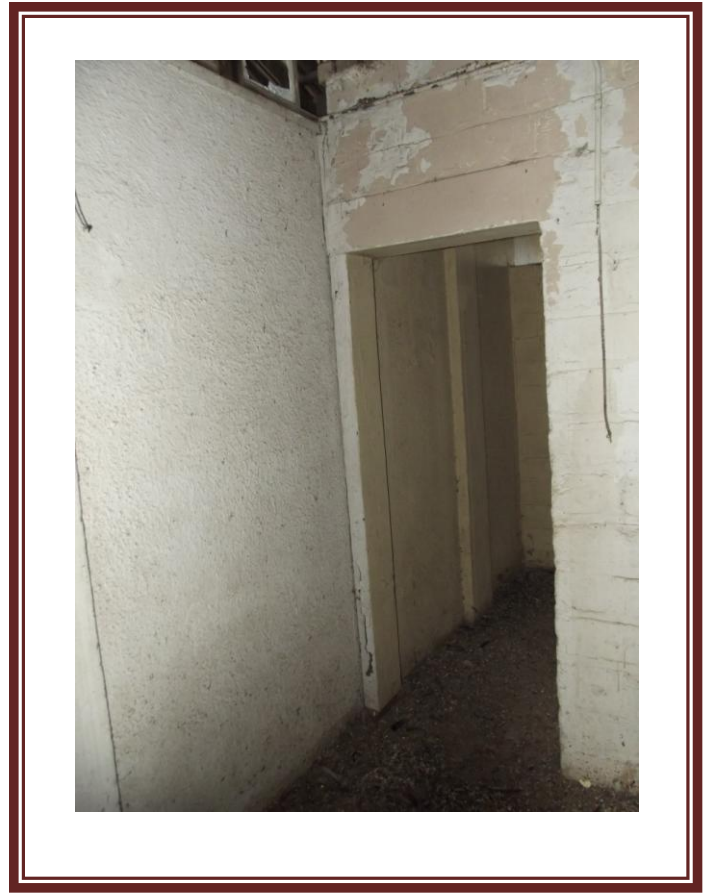


Fig. 1 & 2 showing wooden post supporting lintel.



Fig.3. showing post supporting lintel.



Fig.4.  
Showing base  
of wooden  
post.

## MITIGATION

1. Ensure that the wooden post and central wall, when removed, do not support the roof trusses.
2. The wooden post must be accessioned in the collection for possible later re-use.
3. A brick from the central wall with some mortar must be placed in the collection as an example.
4. The wooden beam along the central wall must be retained to indicate the original position of the wall.
5. The line of the central wall should be demarcated as far as possible in the floor as part of the interpretation of the original fabric.