

ROBBEN ISLAND MUSEUM OLD POWER STATION

REPORT No. 7 FLOORS AND FLOOR TRENCHES

INTRODUCTION

Interpretation of the historical provenance of the trenches from the 2011 survey diagram was difficult as it appeared incomplete. The main reason was the layer of debris and bird guano deposit on the floor of the building. End February/ beginning March 2012 the guano and debris was removed from the building to facilitate the interpretation of the trenches. It was initially thought that the guano had filled up the trenches over time. This is not the case as the trenches were either filled in with concrete or with a soil/ lime mix.

FINDINGS

The pipe trenches on the eastern side, which connected the water pipes from the cooling pond outside were mostly filled with concrete. The central channel was still partially open to the outside and filled with a soil/ lime mix.[refer fig.4]

The cable channels were filled up to some extent apart from those in the Transformer Room. The original cable exit was through the NW corner where the present main entrance is situated.

A later cable trench appears on the northern side of the floor, which appears to have been a modification in the 1970's for a fifth Rolls Royce Diesel Genset to be installed as a back up unit. A correlation to the 1967 plans can also be made with the remainder of the current trenching.

Two artefacts were found in the filled up trenches and handed to RIM.

RECOMMENDATION

Opening up of the trenches during construction must be done with heritage supervision.

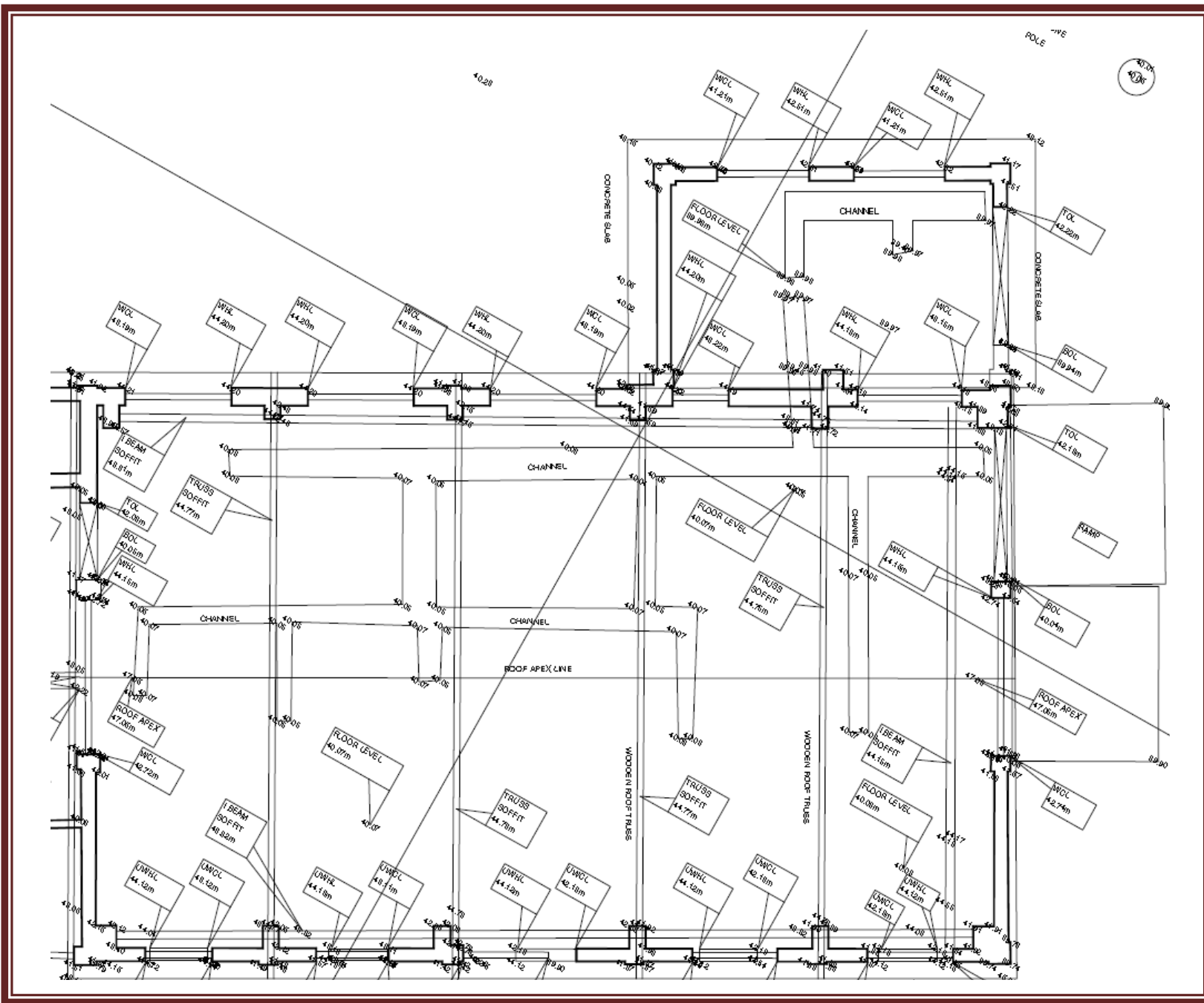


Fig.1.
Ca 2011

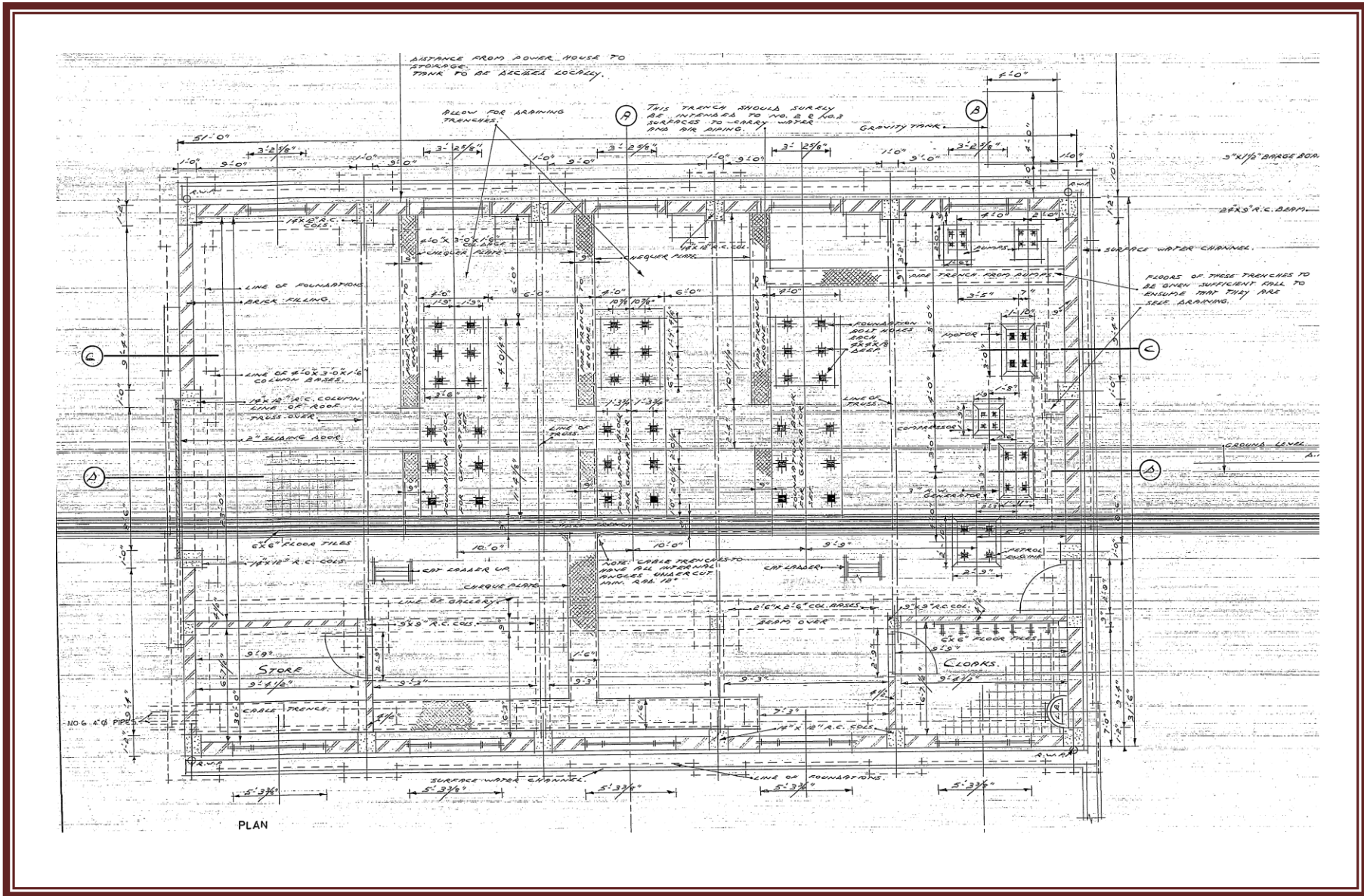


Fig. 2. Ca 1943

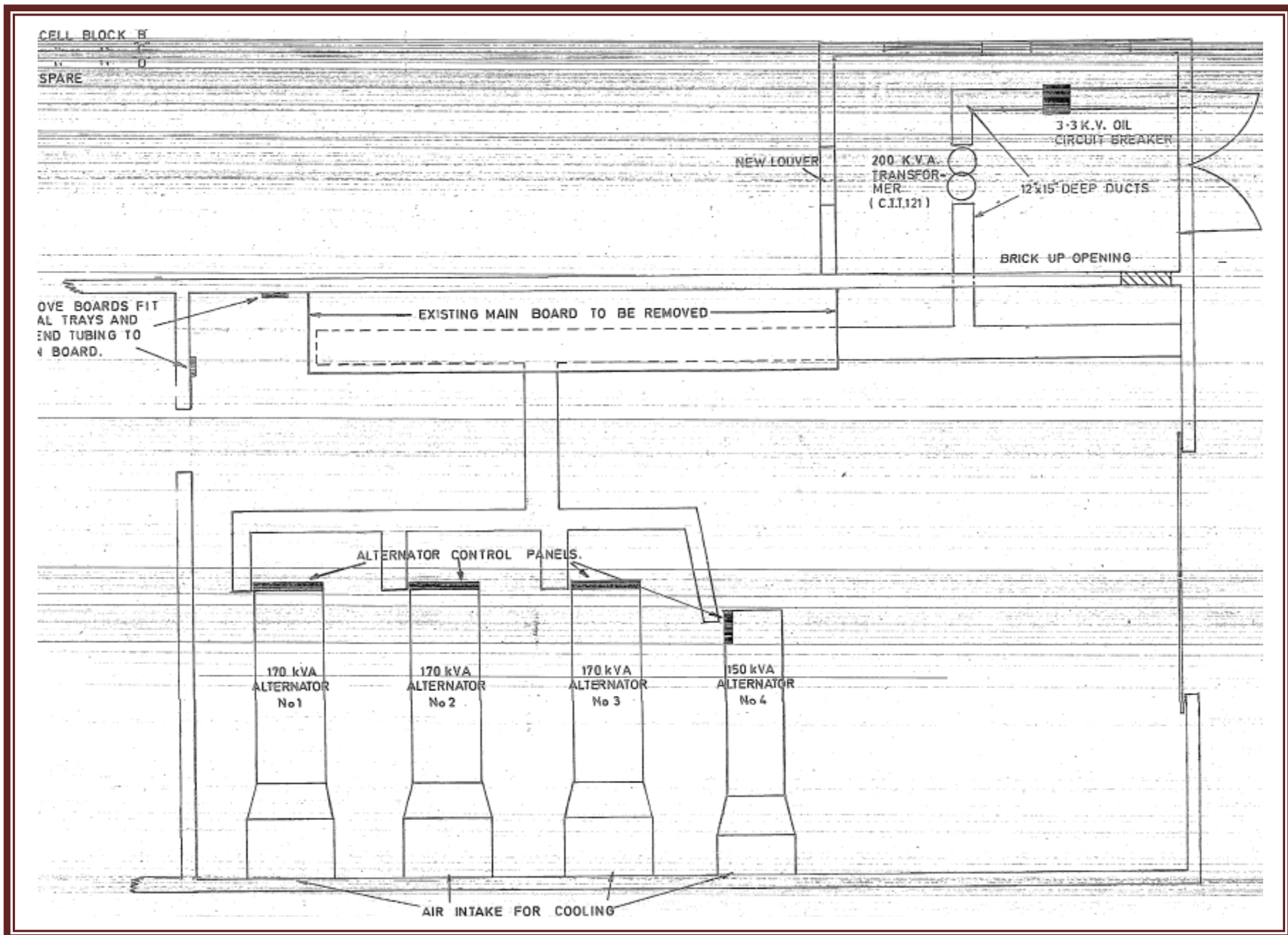


Fig.3. Ca 1970

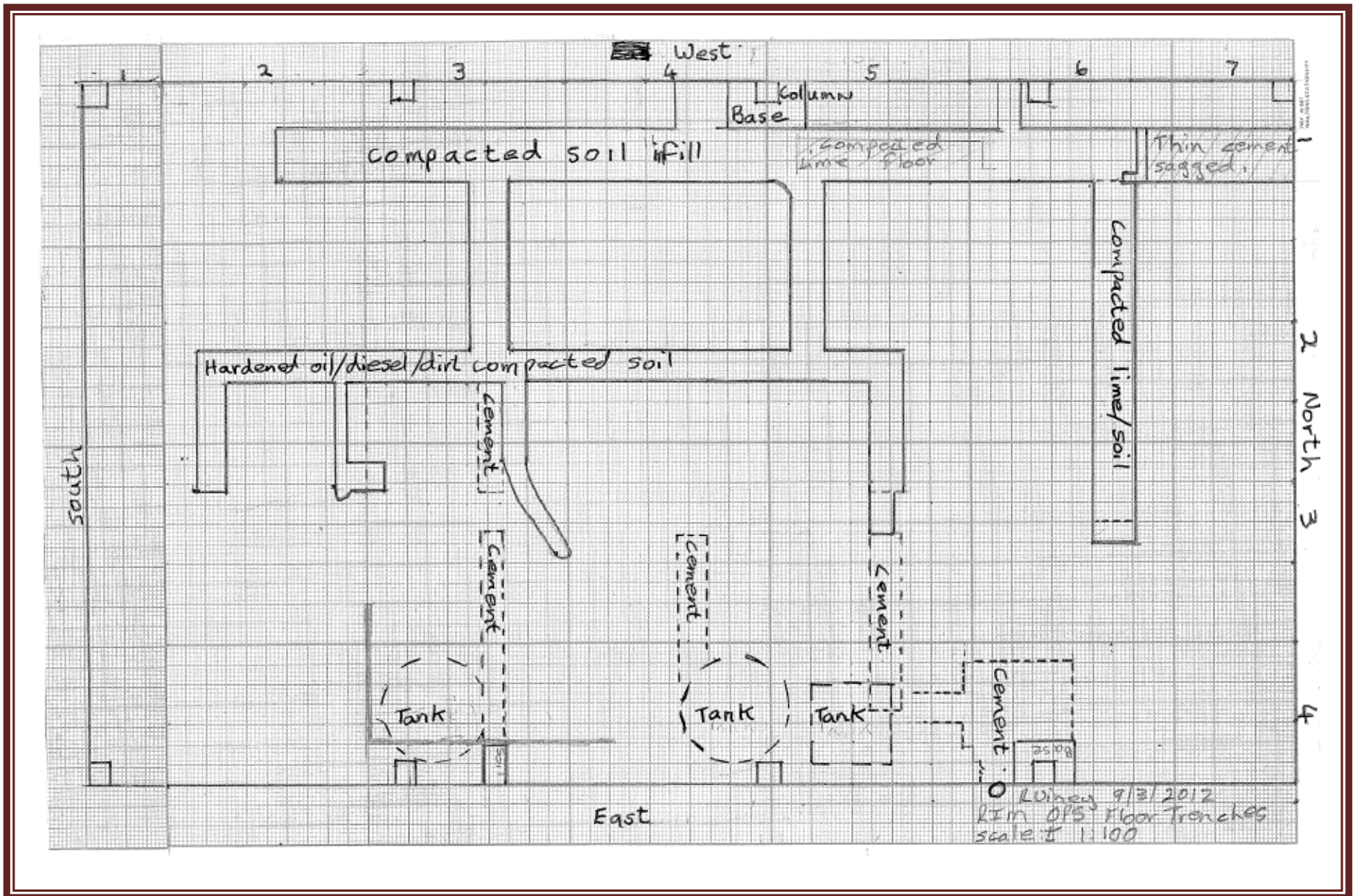


Fig.4.

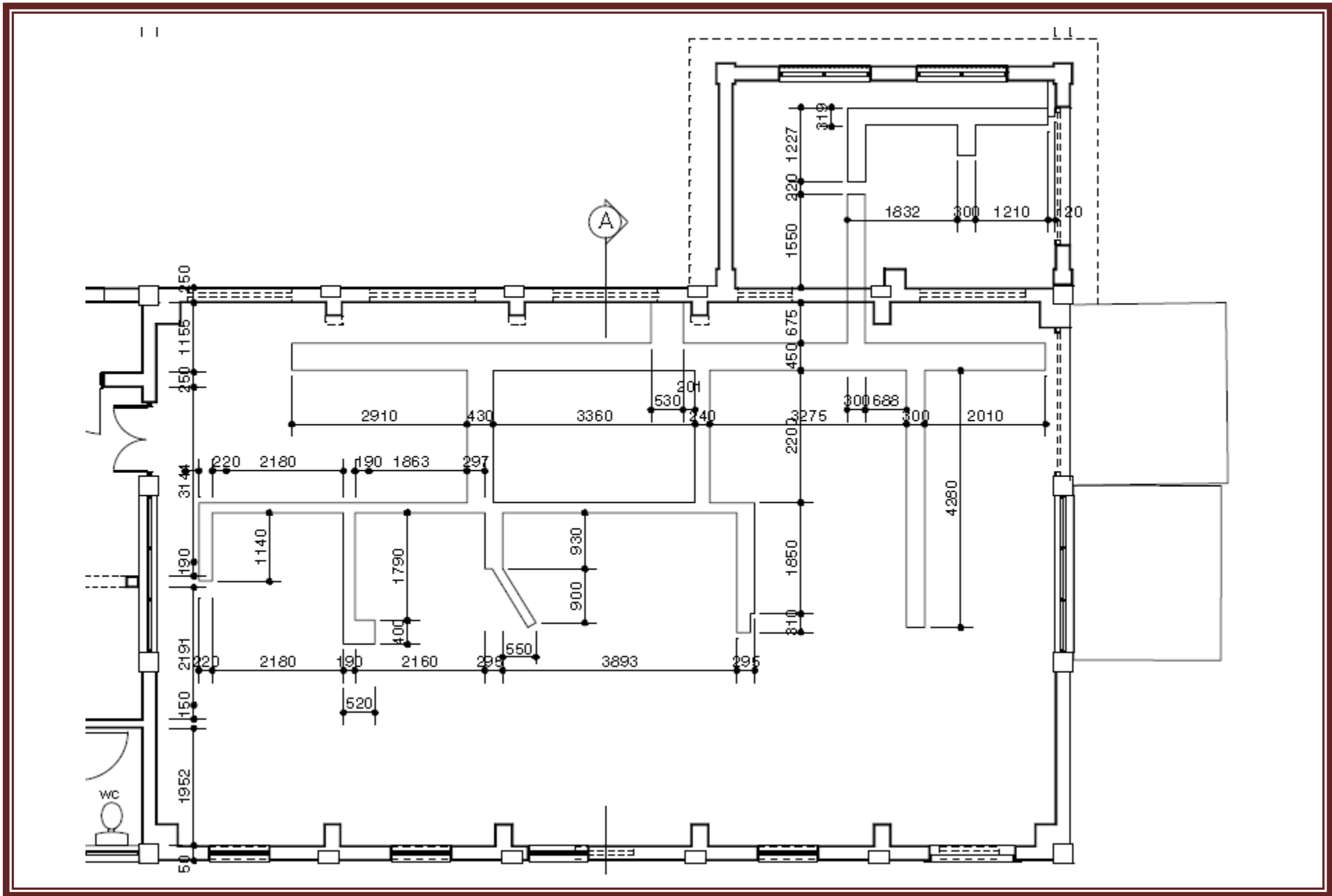


Fig.5. June 2012



