

SOUTH AFRICAN HERITAGE RESOURCES ASSOCIATION
111 HARRINGTON STREET
CAPE TOWN

ATTENTION: KATHRYN SMUTS

IMPALA PLATINUM LIMITED

NOTICE OF INTENT FOR THE ENVIRONMENTAL WORK ASSOCIATED WITH THE PROPOSED IMPALA PLATINUM LIMITED (IMPALA) SHAFT 16 WASTE ROCK DUMP EXPANSION AND PIT 8C PROJECT

Dear Ms Smuts

1. INTRODUCTION

This letter serves to inform you of Impala's intention to apply for environmental authorisation to undertake additional open cast activities adjacent to the existing Impala Stores area and to expand the existing waste rock dump at Shaft 16. The proposed projects are located on the farms Vaalkop 275 JQ and Beerfontein 263 JQ, and Reinkoyalskraal 278 JQ respectively.

2. PROJECT OVERVIEW

Pit8C

In 2005, the Department of Mineral Resources (DMR) approved the EIA/EMP amendment report for the mining of both the UG2 and Merensky reef using opencast mining and digging methods (Metago, 2005). A portion of the farms Vaalkop 275 JQ and Beerfontein 263 JQ, located adjacent to the Impala stores, was omitted from the original project area. Impala is proposing to undertake open cast activities, referred to as the proposed Pit8C project in this area. The location of the proposed Pit8C project is shown in Appendix A.

The proposed Pit8C project will consist of a new gravel access road, temporary topsoil stockpile area, a temporary waste rock stockpile area and will cover an area of approximately 5 hectares. The proposed Pit8C project will be mined using conventional opencast mining techniques. In this regard a boxcut will be developed when mining commences. Topsoil will be removed and stockpiled; overburden will be drilled,

blasted and removed; and ore will be removed and sent for crushing at the existing crusher plant. The open pit will then be closed by backfilling and replacing the stored topsoil on top of the overburden and then vegetation will be re-established. The expected life of operation is approximately 1 year.

Shaft 16 waste rock dump expansion

The existing waste rock dump located on the farm Reinkoyalskraal 278 JQ (at Shaft 16) was constructed in accordance with the relevant approved EIA/EMP amendment report for Shaft 16. Impala is now proposing to expand the waste rock dump. The proposed expansion will cover an area of approximately 19 hectares. The location of the proposed Shaft 16 waste rock dump expansion project is shown in Appendix A.

3. SUMMARY OF ENVIRONMENTAL WORK

SLR Consulting (Africa) (Pty) Ltd (SLR Africa), an independent firm of environmental consultants, has been appointed by Impala to manage the environmental process for the project components. In this regard, authorisation will be required from both the DMR and DEDECT.

SLR and Impala would like to inform SAHRA of the intent to carry out the environmental work as outlined above.

For any queries, please contact the undersigned.

Kind regards



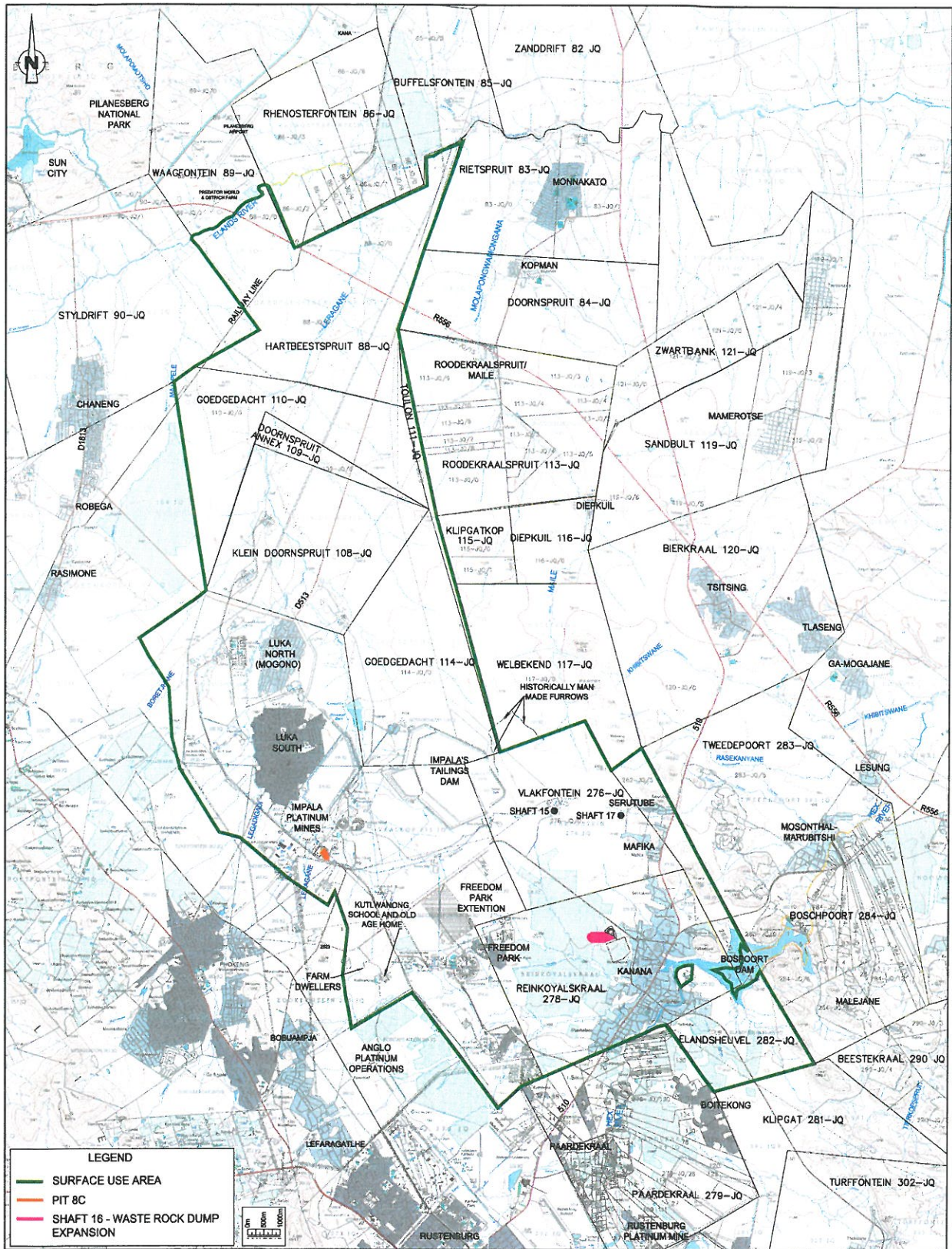
Caitlin Pringle



Brandon Stobart

For SLR Consulting (Africa) (Pty) Ltd

APPENDIX A



SLR Johannesburg Office
 METAGO HOUSE
 FOURWAYS MANOR OFFICE PARK
 CORNER ROOS AND MACBETH STREETS
 FOURWAYS
 JOHANNESBURG, SOUTH AFRICA
 T: +27 (11) 467-0945
 F: +27 (11) 467-0978
 www.slroffices.com

LOCAL SETTING

07/2012

710.09003.
00092

FIGURE 2

NOTE: PROPERTY BOUNDARIES SHOWN CONCEPTUALLY ON THIS MAP