

**ROBBEN ISLAND MSP A
SECTION PHOTOGRAPIC
SURVEY EXTERIOR AND
FACADES**

METHODOLOGY

Images have been reproduced in this document to enable easy access.

The survey was commissioned by Robben Island Museum to enable the upgrading of the 'Cell Stories' exhibition in A Section of the MSP.

The original digital images are high resolution 4288 x 3216 with a 72 DPI.

Images were taken with a Fujifilm Finepix S2960 digital camera.

Not all images are labelled, only the first image of each space is labelled.

Blurred images that have been replaced will have the original and replacement number.

The floor plan is reproduced at the end of this document

The original images are curated by RIM.

Copyright remains with RIM and the photographer in terms of section 27[23] of the National Heritage Resources Act, 25 of 1999.

REFERENCES

Heritage Office of the NSW
Department of Planning:
*Photographic Recording of
Heritage Items using Film or
Digital Capture.* 2006.

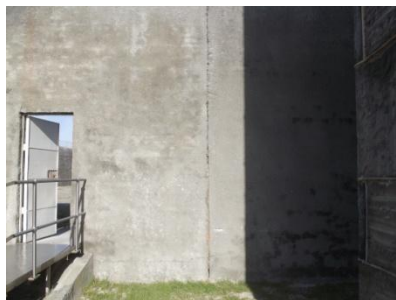
Architectural drawing courtesy
Groenewald Preller Architects

EAST OUTSIDE PERIMETER





INSIDE TENNIS COURT SOUTH



SE CORNER



SW CORNER



NW CORNER



LOOKING SOUTH



LOOKING EAST





WINDOW LEFT



CENTRE



COURTYARD A & B SECTION

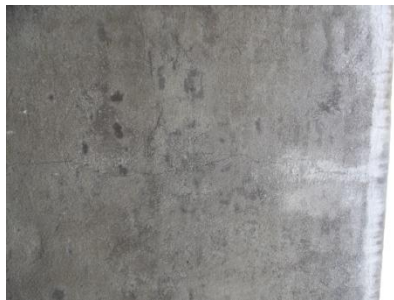


RIGHT





COURTYARD INSIDE LOOKING N



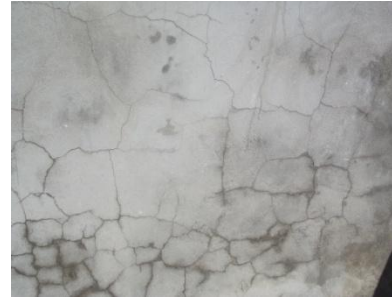






COURTYARD INSIDE LOOKING W





COURTYARD INSIDE LOOKING S





E INSIDE COURTYARD





INDIVIDUAL FEATURES

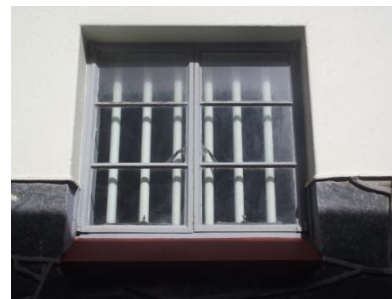


INNER COURTYARD LOOKING W

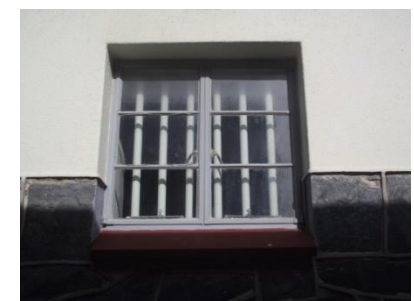
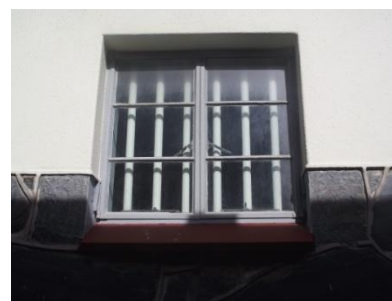




INNER COURTYARD LOOKING N

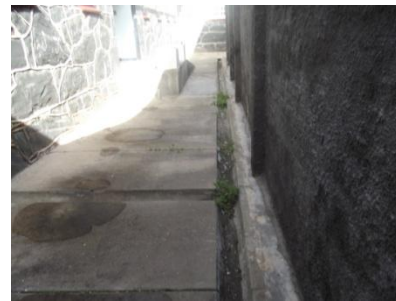


INNER COURTYARD LOOKING E





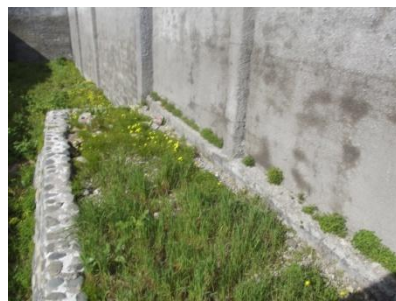




WESTERN COURTYARDS













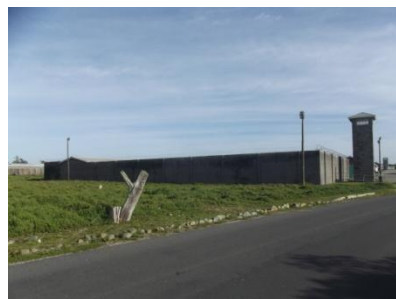




SOUTH FACADE



S FACADE OUTER PERIMETER



SW CORNER





W FACADE OUTER PERIMETER





