

MSP 'A' SECTION EXHIBITION BOARDS AS A CONSERVATION INDICATOR.

The exhibition in 'A' Section was opened in 1998. Exhibition boards were mounted flush with the walls in each cell. There are usually two boards per cell, one larger telling a story, the other smaller identifying an Ex-political prisoner.

Holes were drilled into the walls and filled with wooden plugs [image 6303]. A galvanised sheet of metal was then attached with screws to the wall.[image 6295] The metal sheets then had Velcro stuck on for the main storyboard of either glass or Perspex to be attached.

A small sample of the boards was removed from cells 29, 38, 39, 40 and 41 to determine if any changes to the fabric had taken place since 1998. In most cases discolouration of the surface behind each board was noticeable. In one case the board had been mounted over marks on the wall that clearly showed a small shelf had been there before 1998.

The reason for the discolouration was not investigated further as more technical input is required with regard to the type of paint and their susceptibility to UV light and moisture penetration. Such an investigation may be prohibitive in terms of time and resources as each cell was personalised by prisoners with different colours and types of paint.

Despite the discolouration the area behind the boards appeared to be stable and not deteriorating, even in cell 29 which has rising damp in the SE corner [image 6244, 6247]

CELL 29 DSCF 6242



6244



6243



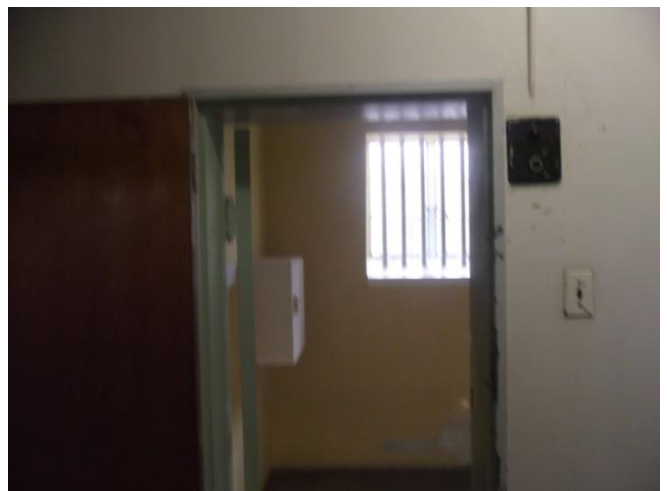
6247



6245



6248



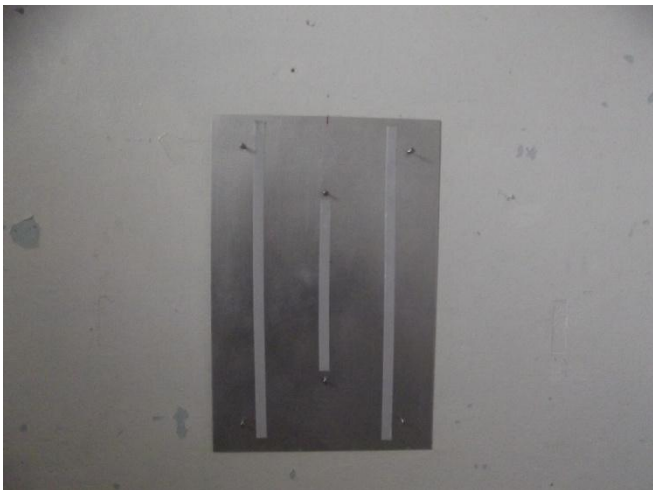
6295



6298



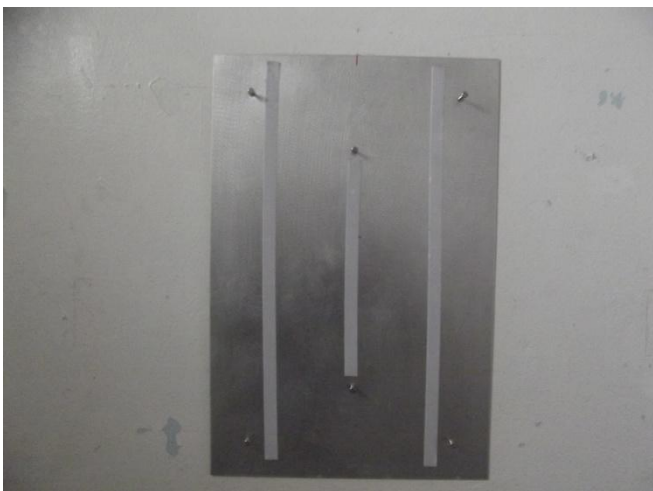
6296



6299



6297



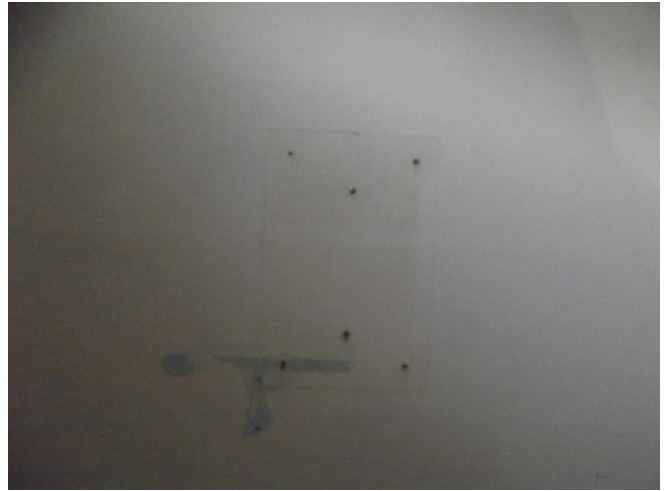
6300



6301



6304



6302



6305



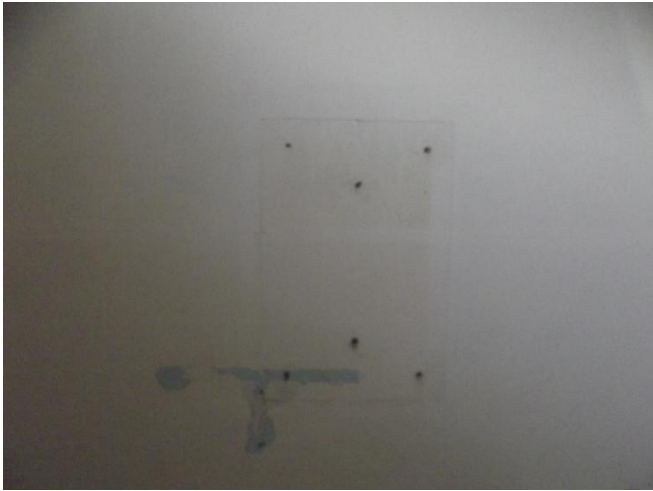
6303



6306



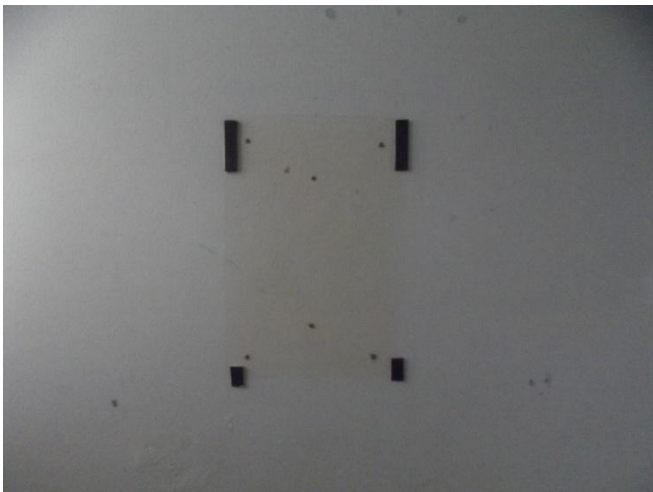
6307



6310



6308



6311



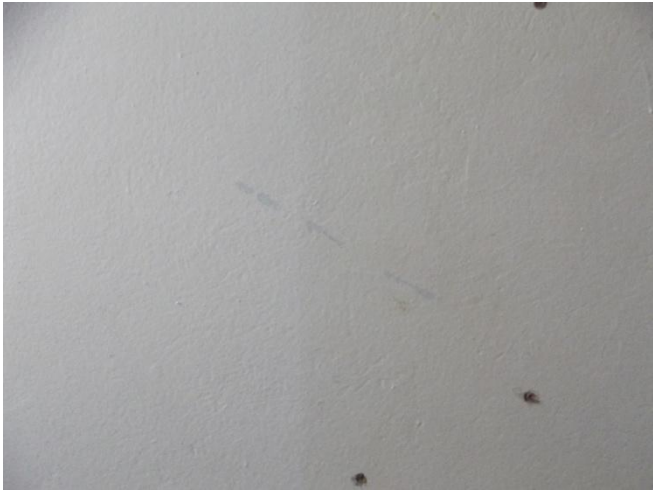
6309



6312



6313



6316



6314



6421



6315



6422



6423



6426



6424



6425

