

**ROBBEN ISLAND MSP A SECTION  
PHOTOGRAPIC SURVEY INTERIOR  
OF CELLS, ABLUTIONS AND  
RECREATION AREAS**

**METHODOLOGY**

Images have been reproduced in this document to enable easy access.

The survey was commissioned by Robben Island Museum to enable the upgrading of the 'Cell Stories' exhibition in A Section of the MSP.

The original digital images are high resolution 4288 x 3216 with a 72 DPI.

Images were taken with a Fujifilm Finepix S2960 digital camera.

Photographs taken in 2001 were collated and digitised.

The images in this document are an attempt to mirror the 2001 photographs in 2013.

A schedule of images is produced at the end of this document.

The original images are curated by RIM.

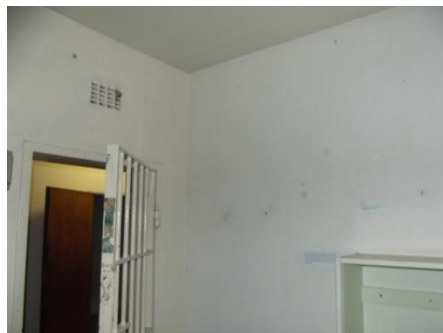
Copyright remains with RIM and the photographer in terms of section 27[23] of the National Heritage Resources Act, 25 of 1999.

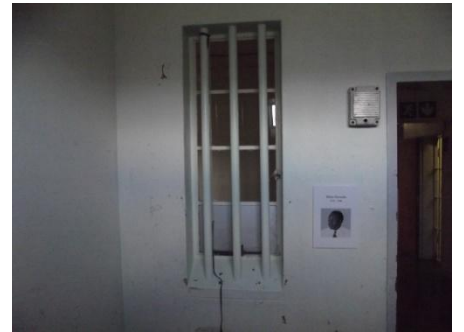
**REFERENCES**

Heritage Office of the NSW  
Department of Planning:  
*Photographic Recording of Heritage  
Items using Film or Digital Capture.*  
2006.

Architectural drawings courtesy  
Groenewald Preller Architects

CELLS 01-20





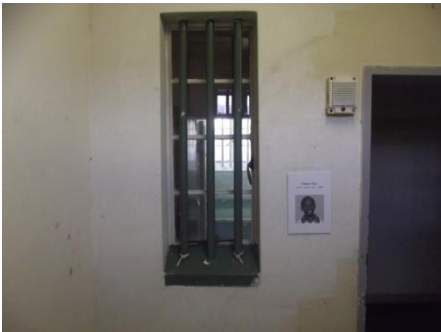
CELLS 21-23



CELLS 24-27



CELLS 28-37

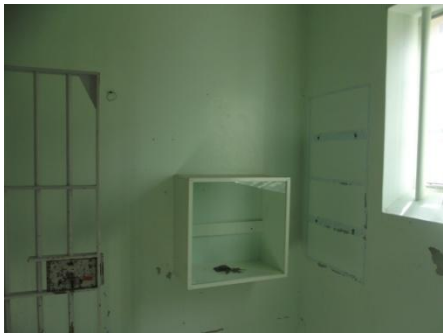




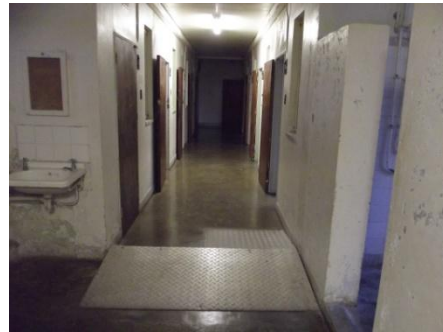




CELLS 38-41



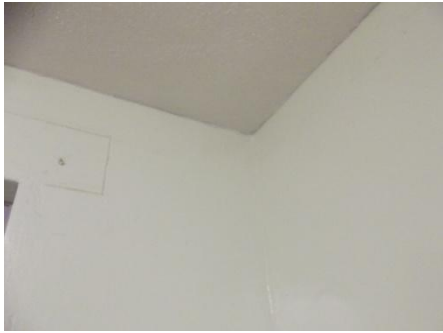
N-S CORRIDOR ABLUTIONS



RECREATION AREA 01







RECREATION AREA 02







Room Data sheet no.	Area	2000	2001		2004	2007	2013				Comment	
			Film	Photo			Like for like	Repair foto	Full survey			
SA 01	Cell 01 or '03'?		17	15			6325	6502, 6503, 6504				
SA02	Cell 02 or '05'?		17	13			6324	6505, 6506				
SA03	Cell 03		17	14			6326	No				
SA04	Cell04		17	0			6327	6507, 6508				
SA05	Cell05		17	1			6328	No				
SA06	Cell06/08?		17	4			6329	6509, 6510				
SA07	Cell07		17	5			6330	No				
SA08	Cell08/06?		17	2			6331	6511, 6512, 6513, 6514				
SA09	Cell09		17	3			6332	6515, 6516, 6517, 6518				
SA10a	Entrance lobby		No	No								
SA10	Entrance lobby		No	no								
SA11	East West corridor A		17	22-25								
SA12	Cell 12		17	No				6519, 6520, 6521				
SA13	Cell 13		17	No				6522, 6523, 6524				

SA14	Cell14		16	23			6333	6525, 6526, 6527				
SA15	Cell15		16	22			6334, 6335	No repair				
SA16	Cell 16		16	21			6336	6528, 6529, 6530, 6531				
SA17	Cell17		16	20			6337	6532				
SA18	Cell18		16	19			6338	6533, 6534, 6535				
SA19	Cell19		16	18			6339	6536, 6537				
SA20	Cell20		16	17			6340	6538, 6539, 6540, 6541				
SA21	Cell21		16	13			6427					
SA22	Cell22		16	12,11, 10			6428, 6429, 6434					
SA23	Cell23		16	9,8			6430, 6431					
SA24	Cell24		15	23			6435, 6436					
SA25	Cell25		15	21			6437					
SA26	Cell26		15	No			No					
SA27	Cell27		15	20			6438					
SA28	Cell28		15	9,10, 11			6439, 6440, 6441, 6442					
SA29	Cell29		15	6,7,8,			6443,					

				5			6444, 6445, 6446					
SA30	Cell30		15	4			6447, 6448					
SA31	Cell31		15	2,3			6449, 6450					
SA32	Cell32		15	1,0			6451, 6452					
SA33	Cell33		14	25			6453					
SA34	Cell34		14	24,25			6454, 6455					
SA35	Cell35		14	21,22			6456, 6457					
SA36	Cell36		14	19,18			6458, 6460					
SA37	Cell37		14	20			6459					
SA38	Cell38		14	No			No	6491- 6495				
SA39	Cell39		17	No			No	No				
SA40	Cell40		17	16			6465	No				
SA41	Cell41'Sel 2'		17	17			6466	6496- 6498				
SA42	Warder		16	14			Locke d, equip obstru ct view					
SA43	Warder		16	16			6467					
SA44	Ablutions		15	12-19			6468- 6475					
SA45	N-S East End Corridor											



SA46	North South Corridor C		18	2,3								
SA47	North South Corridor B		17	No								
	North South Corridor B		18	0,1								
SA48	Entrance lobby south		no	No								
SA49	Toilet		no	No								
SA50	Recreation Area-Ablutions		no	No								
SA50 new	Recreation are-ablutions		no	No								
SA51	Link corridor to recreation area		no	No								
SA52	Recreation area 01		14	1-9			6476-6484					
SA53	Recreation area		14	10-16			6485-6490					
	Corridor A		17	24,25								