

**ROBBEN ISLAND MSP A SECTION
PHOTOGRAPIC SURVEY INTERIOR
OF CELLS, ABLUTIONS AND
RECREATION AREAS SPECIFIC
REPAIRS**

METHODOLOGY

Images have been reproduced in this document to enable easy access.

The survey was commissioned by Robben Island Museum to enable the upgrading of the 'Cell Stories' exhibition in A Section of the MSP.

The original digital images are high resolution 4288 x 3216 with a 72 DPI.

Images were taken with a Fujifilm Finepix S2960 digital camera.

Images follow the cell number sequence as laid out by architects drawing 021448/A2-01 dd. 2002-10-10 and the room data sheets starting from Cell 01.

Not all images are labelled, only the first image of each cell or space is labelled.

Photographs were taken of areas inside the cells that were repaired in 2008.

The images serve to identify the repaired area.

The images also serve to assist future state of conservation assessments of the repaired area.

Where cells had had no repairs the fact is mentioned and no photos were taken.

The original images are curated by RIM.

Copyright remains with RIM and the photographer in terms of section 27[23] of the National Heritage Resources Act, 25 of 1999.

REFERENCES

Heritage Office of the NSW
Department of Planning:
Photographic Recording of Heritage

Items using Film or Digital Capture.
2006.

Architectural drawings courtesy
Groenewald Preller Architects

CELL 01



CELL 02



CELL 05 NO PHOTO

CELL 07 NO PHOTO

CELL 08



CELL 03 NO PHOTO

CELL 06

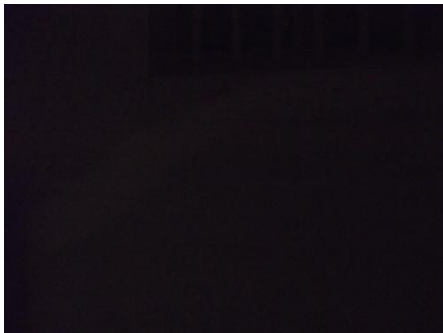


CELL 04





CELL 09



SA10 ENTRANCE LOBBY NO PHOTO

CELL13

CELL 14

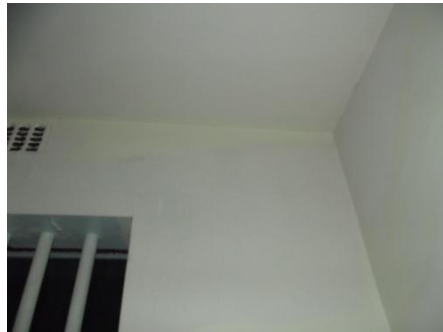


CELL12





CELL 17



CELL18



CELL 19



CELL 15 NO PHOTO

CELL 16



CELL 20



CELL 21

