

Inhloso Yalomqulu

Inhloso yalomqulu iwunikeza bonke abathintekayo (I&APs) ukwaziswa mayelana nephrojekthi ehlongozwayo yokukufakwa kwepayipi lamanzi eliyisiphakeli endaweni yase-Macambini (isigaba 4) kanye nokwethula kuhlangukanye nokuchaza inqubo yokuhlola kwezemvelo okuyisisekelo (Baic Assessment) okuyingxenywe yalephrojekthi. Lomqulu uhlose nokunikeza imininingwane mayelana nesicelo sokusebenzisa amanzi okuhambisana nalephrojekthi kanye nokuchaza inqubo yokuzibandakanya kwabathintekayo kulephrojekthi echazwe kumthetho sisekelo mayelana nezemvelo i-National Environmental Management Act, 1998 (Act No. 107 of 1998) (NEMA). Ngaphezu kwalokho lomqulu umema bonke abathintekayo ukuba balethe iziphakamiso nezimvo zabo mayelana nalephrojekthi.

Incazelo YePhrojekthi

AbakwaHatch Goba (Pty) Ltd baqashwe iLembe District Municipality ukuthi bengamele ukwakhiwa kwepayipi lamanzi eliyisiphakeli endaweni yaseMacambini (isigaba4). Lokhu kwakhiwa kwepayipi lamanzi okuhlongozwayo kuyingxenywe yephrojekthi yomkhandlu yohlelo lokufakwa kweziphakeli zamanzi endaweni yaseNacimbini (izigaba zingu-9 uma sezipehelele) futhi izohlanganisa lokhu okulandelayo:

- I-PVC bulk water gravity main elinganiselwa ku-1.4 km ubude (naku-355 mm ububanzi).
- I-HDPE bulk water rising main elinganiselwa ku-2.3 km ubude (naku-355 mm ububanzi).
- Isiteshi sokuphampa amazi esakhiwe ngezitini bese sakhonkwa;
- Kanye namadamu amabili okugcina amanzi (reservoir) akhonkiwe angaphatha amanzi alinganiselwa ku-0.6ml kanye no-5.2 ml.

Imigodi ezombiwa ilinganiselwa phakathi kuka-1.4m kanye no-2m ukushona. Ukusetshenziswa kwezinto ezihlangene nokufakwa kwaleli payipi eliyisiphakeli kulinganiselwa ku-41600 m².

Indawo Yephrojekthi

Indawo lapho kuzoqhubeka khona le phrojekthi itholakala e-Macambini Tribal Authority Area futhi itholakala ebangeni elilinganiselwa ku-12.7 km enyakatho-mpumalanga nendawo yaseMandeni, KwaZulu-Natal. Indawo yokuphakela amanzi i-Macambini Supply itholakala ngaphansi koMasipala i-Ndondakusuka Local Municipality endaweni ye-Lembe, lapho ilembe District Municipality liwumgunyazi wezokuphakela kwamanzi.

Isigaba-4 sokufakwa kwepayipi lamazi eliyisiphakeli siqhubeka kuphrojekthi yesigaba 2, yona ehamba kusukela kwidamu lokugcina amanzi i-Rocky Ridge Reservoir kuya emlonyeni womfula uThugela. Isigunyazo sezemvelo sesigaba-2 samukelwa ngomhlaka 9 kuMay nyakenye (2013), simukeliswa unmyango wezolimo kanye nezemvelo eKZN, Ref: DC/29/0016/2012, NEAS Ref: KZN/EIA/000070472012.

Kulindleke ukuthi lamapayipi ahlongozwayo axhumane okungenani nomfula owodwa onqamula ezimobeni bese uhlangana nomgwaqo omkhulu u-P415 eningizimu-ntshonalaga. Ngokuqhubeka kwalephrojekthi kungenzeka kudingeke kumbiwe komhlabathi kanye namatshe ngokwezininga elithile kanye nokukugqitshwa kwemigodi.

Ukuhlolwa Kwemvelo Okuyisisekelo

Ingxenywe 24 ye-National Environmental Management Act (Act No. 107 of 1998) (NEMA) idinga ukuthi imisebenzi (e.g. ukwakha), okungenzeka ibe nemithelela emvelweni kumelwe ithole isigunyazo sezemvelo kumgunyazi ofanele ngaphambi kokuba leyo misebenzi iqale. Imisebenzi enjengaleyo ibalwe ngaphansi GNR 544 and GNR 545 (2 August 2010) ye-NEMA. Ngokwalephrojekthi ehlongozwayo, umgunyazi ofanele owengamenle izigunyazo zezemvelo umnyanwo wezolimo kanye nezemvelo (DAEA). Imisebenzi esohlwini ethintekayo kulephrojekthi ehlongozwayo ibalwe kuphela ngaphansi kuka-GNR 544 hhayi ngaphansi kuka-GNR 545, futhi ngenxa yalokho lesi sicelo sidinga isigunyazo sezemvelo ngokwenqubo yokuhlola okuyisisekelo i-Basic Assessment (BA).

Imisebenzi ye-BA ebaliwe kuze kube manje ihlanganisa:

U-Activity 11 kanye no-Activity 18

Ukudingeka Nokufuneka kweprojekthi

Ngenxa yokuqaphela ilungelo labantu lokuthola amanzi ahlanzekile futhi nanele ngokukwengxenywe-27 (isigaba b) yomqulu wamalungelo aseMzansi Africa, Ilembe District Municipality lihlangoza ukufaka ipayipi lamanzi eliyisiphakeli endaweni yaseMacambini Tribal authority Area. Ukwenziwa kwaleprojekthi kuzosiza nomasipala womkhandlu weLembe ukuthi ukwazi ukuhlangabezana nemigomo yawo yokuthuthukiza indawo yaseMacambini kanye neMandeni yonkana.

Imithelelo Elindelekile

- Ukukhukhuleka Komhlabathi
- Izintuli
- Umsindo
- Ukuphazamiseka kwezenhlalakahle nezomnotho
- Imithelelo kumifula namaxhaphozi
- Ukuthinteka kwamafa
- Ezemvelo
- Ukuthinteka kwezakhiwo

Ucwaningo Lochwepheshe

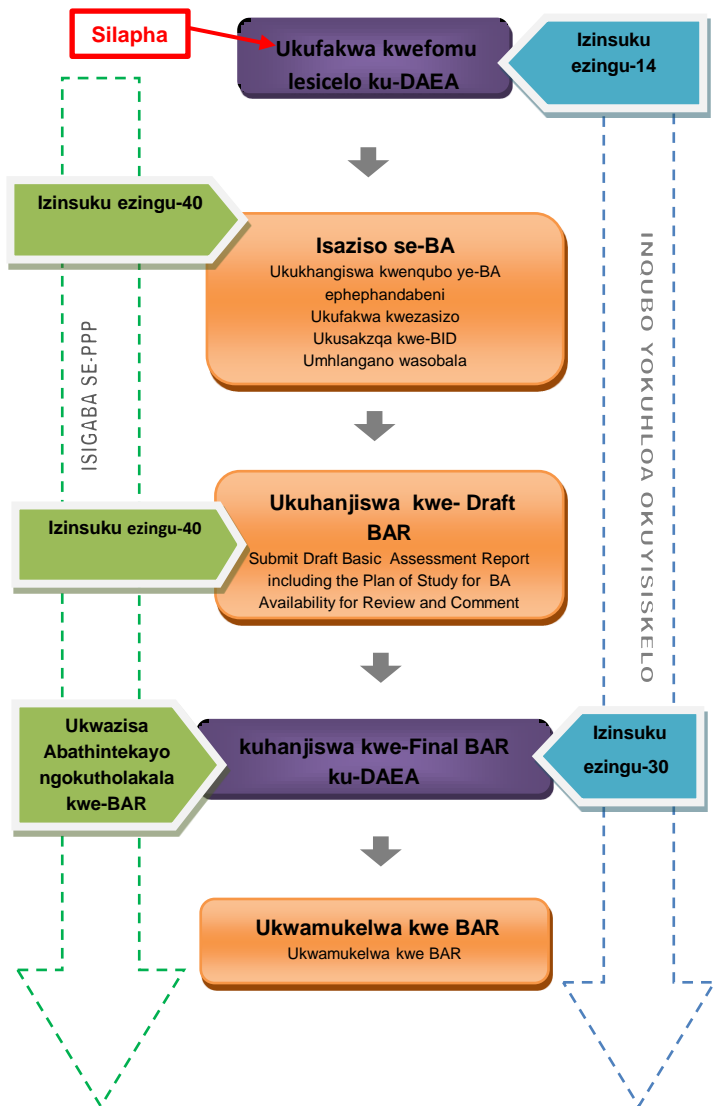
Njengenxenywe yophenyo lokuqala lwendawo, lokhu kucwaninga kochwepheshe okulandelayo kuzokwenziwa:

- Ukuhlola kwemithelelo kumaxhaphozi;
- Ukuhlolwa kwamafa.

Isicelo Sokusebenzisa Amanzi

Inqubo ye-BA izohlanganisa nokuhanjiswa kwesicelo sokusebenzisa amanzi esibumbene (IWULA) emnyangweni wezamanzi (DWA) ngokuvumelana ne-NWA (No 36 of 1998), ingxenywe 21 (c) kanye no (i).

Inqubo ye-BA



Ukubamba Iqhaza Kwasobala

Ukubama iqhaza kwabathintekayo kuyingxenye ebalulekile ye-BA futhi kuqhubeka ize iyophela i-BA. Ihloso yalenqubo maphakathi ne-BA iwukusiza abathintekayo ukuthi bakwazi ukubona izinto ezingase zibahluphe bese befaka izikhalazo noma imibono ezobazuzisa. Izinyathelo ezithathayo ekuqhutshweni kwalenqubo ikanjena:

STEP 1: Ukwazisa ama- I&APs kanye nokukhunjwa kwezinkinga

- Ukwazisa ama-I&APs ngesicelo sephrojekthi.
- ukukhunjwa kwezinkinga nezikhalazo zama-I&APs.
- Ukunikeza ama-I&APs umqulu wolwazi oluyisendlalelo (BID) ngephrojekthi, kuhlanganise nebalazwe lendawo yephrojekthi.
- Ukucelwa kwama-I&APs ukuba abhalise iminingwane yawo ukuze athole ukwaziswa ngokuqhubeka kwe-phrojekthi.
- Ukubanjwa komhlangano ukuze kwaziswe kabanzi ama-I&APs mayelana nephroekthi kanye nokuvulwa kwenkundla yokuxoxa ngezinkinga ezilindelekile mayelana nephrojekthi.

STEP 2: Ukuhlolwa kwe-Draft BA Report ngama I&AP

- ukulungiselela kombiko wemibono okuhlanganisa izinkinga eziphakanyiswe ama-I&APs ezizofakwa kumbiko we-Draft ye-BA Report (BAR).
- Ukwazisa wonke ama-I&APs abhalisile ohlwini lweprojekthi mayelana nokukhishwa kwe-Draft BAR izinsuku ezingu 40 zokufaka iziphakamiso.
- Ama-khophi e-Draf BAR azotholakalela ukuhlola kwasobala kuyi-GCS website (www.gcs-sa.biz).

STEP 3: IFinal BAR

- Ukufakwa kwemibono eyamukelwe kuma-I&APs ngesikhathi sokuhlolwa nokubhalwa kwe-Final I BAR ngaphambi kokuba ihanjiswe ku-DAEA.
- Ukwazisa ama-I&APs abhalisile mayelana nokuhanjiswa kwe- Final BAR kwabaka-DAEA.
- Ama-khophi e-Final BAR azotholakalela ukuhlola kwasobala kuyi-GCS website (www.gcs-sa.biz).

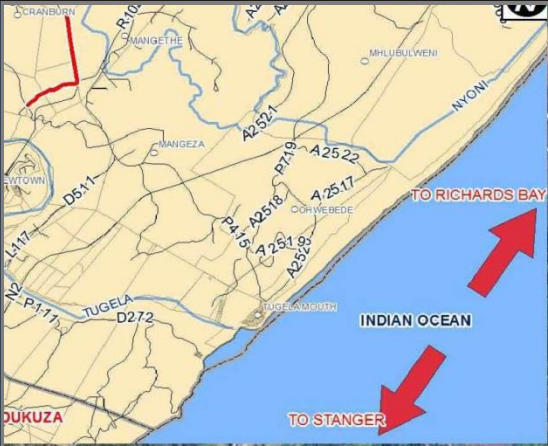


Umcwaningo Wezemvelo: GCS (PTY) LTD

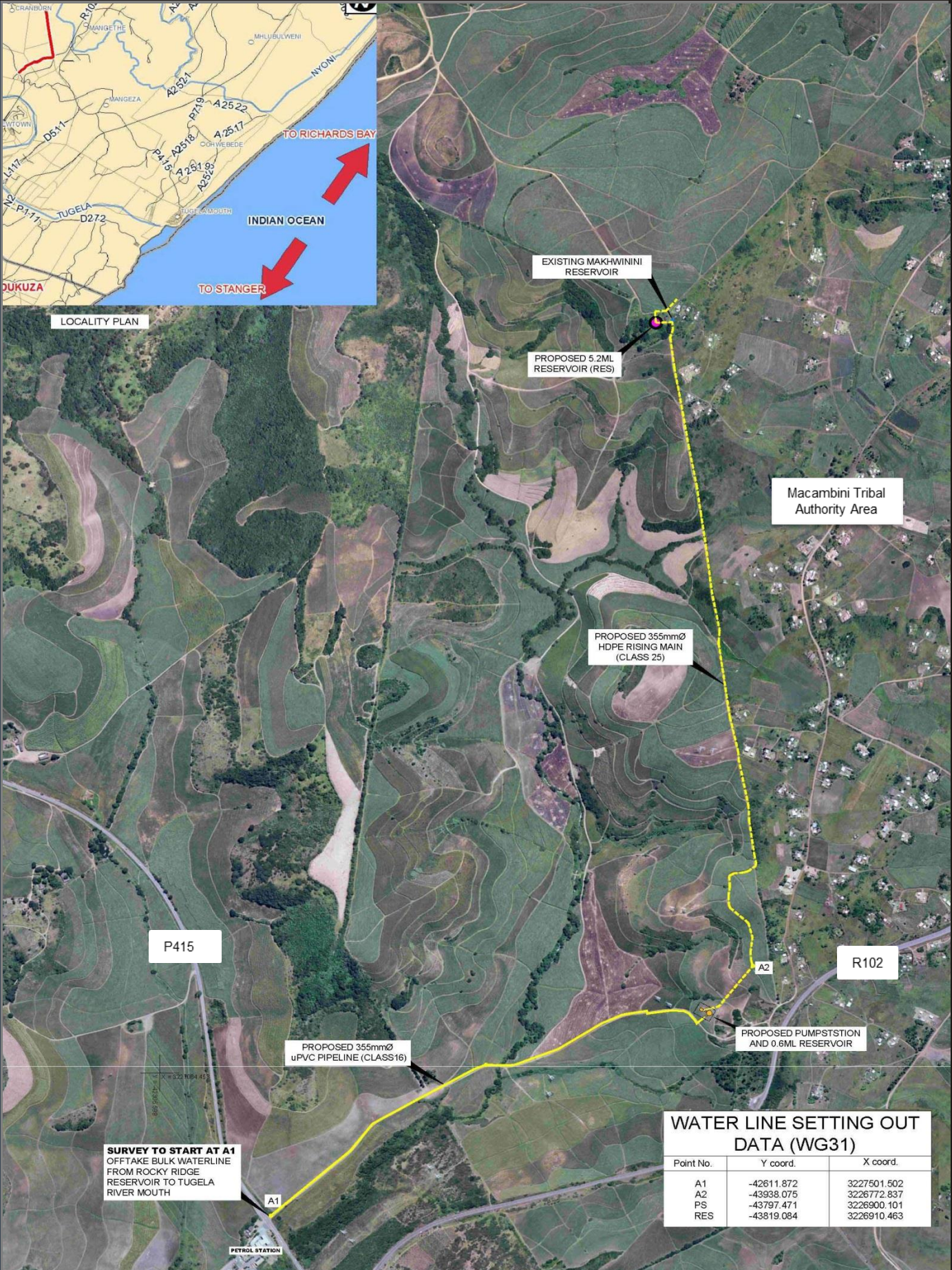
Bonke abathintekayo (I&AP's) bangadlulisela iziphakamiso zabo ngokuzibhala phansi kanye namagama abo kuhlanganise neminingwane yabo yokuxhumana. Laba bayacelwa ukuba bakhombise ukuthi bathinteka kanjani okungase kuhlanganise ukuthinteka ngebhisinisi, ngezimali, ngokomuntu siqu kanye noma yikuphi okunye. Lokhu bangakwenza ngeposi, ifeksi noma i-imeyli.

GCS Pty Ltd
 Ms Futhi Vilakazi
 Ucingo: 031 764 7130
 Ifekisi: 031 764 7140
 limeyli: ntombifuthiv@gcs-sa.biz

Ikheli Leposi:
 PO Box 819
 Gillitts
 3603
 South Africa



LOCALITY PLAN



Macambini Tribal Authority Area

SURVEY TO START AT A1
OFFTAKE BULK WATERLINE FROM ROCKY RIDGE RESERVOIR TO TUGELA RIVER MOUTH

WATER LINE SETTING OUT DATA (WG31)

Point No.	Y coord.	X coord.
A1	-42611.872	3227501.502
A2	-43938.075	3226772.837
PS	-43797.471	3226900.101
RES	-43819.084	3226910.463