

# Background Information Document : BA and IWULA Process for the Proposed Macambini Bulk Water Supply (Phase 4)



## Purpose of this Document

**The purpose of this document is to provide all interested and affected parties (I&APs) with information about the Macambini Bulk Water Supply Phase 4 project and to introduce and explain the Basic Assessment (BA) process. This Background Information Document (BID) also aims to provide information about the Integrated Water Use License Application that is associated with this project and explain the public participation process that is prescribed by the National Environmental Management Act, 1998 (Act No. 107 of 1998) (NEMA). All I&AP's are invited to comment on issues and concerns related to the project.**

### Project Description

Hatch Goba (Pty) Ltd has been contracted by iLembe District Municipality to undertake and manage the construction of bulk water supply infrastructure for the Macambini Water Supply Project: Phase 4. The proposed construction is part of a regional water infrastructure development plan for the area (comprising nine phases in total) and will include:

- 1.4 km uPVC bulk water gravity main (355 mm diameter).
- 2.3 km HDPE bulk water rising main (355 mm diameter).
- Brick / reinforced concrete pump station and 0.6 ML pump storage reservoir.
- 5.2 ML Circular reinforced concrete reservoir alongside the existing Makhwinini reservoir.

Trench depths are proposed to be a minimum of 1.4m and a maximum of 2m. The approximate construction footprint is 41 600 m<sup>2</sup>.

### Location of the Development

The project site is within the Macambini Tribal Authority Area and is located approximately 12.7 km northeast of Mandeni, KwaZulu-Natal. The Macambini Supply area falls within the eNdongakusuka Local Municipality in the iLembe region, for which iLembe District Municipality is the Water Services Authority.

The Phase 4 bulk watermain is an off-take from the Phase 2A project, which runs from the Rocky Ridge Reservoir to the Tugela Mouth. Environmental Authorisation for Phase 2A was received on 9 May 2013 from the KZN Department of Agriculture and Environmental Affairs, Ref: DC/29/0016/2012, NEAS Ref: KZN/EIA/000070472012.

It is expected that the proposed pipelines will intersect with at least one watercourse, which traverses sugar cane fields and runs toward the P415 road in a south-westerly direction. It is likely that some infilling or excavation of soil, sand, pebbles or rock from the watercourse will be required.

## Basic Assessment

Section 24 of the National Environmental Management Act (Act No. 107 of 1998) (NEMA) requires that activities (e.g. construction), which may impact on the environment must obtain an environmental authorization from a relevant authority before commencing with the activities. Such activities are listed under GNR 544 and GNR 545 (Dated 2 August 2010) of NEMA. In terms of the proposed project, the Department of Agriculture and Environmental Affairs (DAEA) is the competent authority for environmental authorization. The listed activities which are triggered by the proposed project are only included under GNR 544 and not included under GNR 545, and as such require an application for an Environmental Authorization in the form of a Basic Assessment (BA) process.

The BA activities identified to date include:

**Activity 11:** *The construction of infrastructure covering 50 square metres or more, where such construction occurs within a watercourse or within 32 metres of a watercourse, measured from the edge of a watercourse, excluding where such construction will occur behind the development setback line.*

**Activity 18:** *The infilling or depositing of any material of more than 5 cubic metres into, or the dredging, excavation, removal or moving of soil, sand, shells, shell grit, pebbles or rock of more than 5 cubic metres from a watercourse*

### Need and Desirability

Due to recognition of the human right “to access to sufficient water” accorded in Section 27 (b) of the SA Constitution, the ILembe district Municipality proposes to construct a bulk water supply pipeline and associated infrastructure in the Macambini Tribal Authority area. The implementation of this project will also assist the district and local government to meet the development goals for the Macambini and the greater Mandeni area.

### Potential Impacts Identified

- Soil Erosion
- Visual Impacts
- Dust Pollution
- Noise Pollution
- Social Impacts
- Economic Impacts
- Watercourse and Wetland Impacts
- Heritage Resources
- Ecological Impacts
- Land use
- Traffic and Access

### Specialist Studies

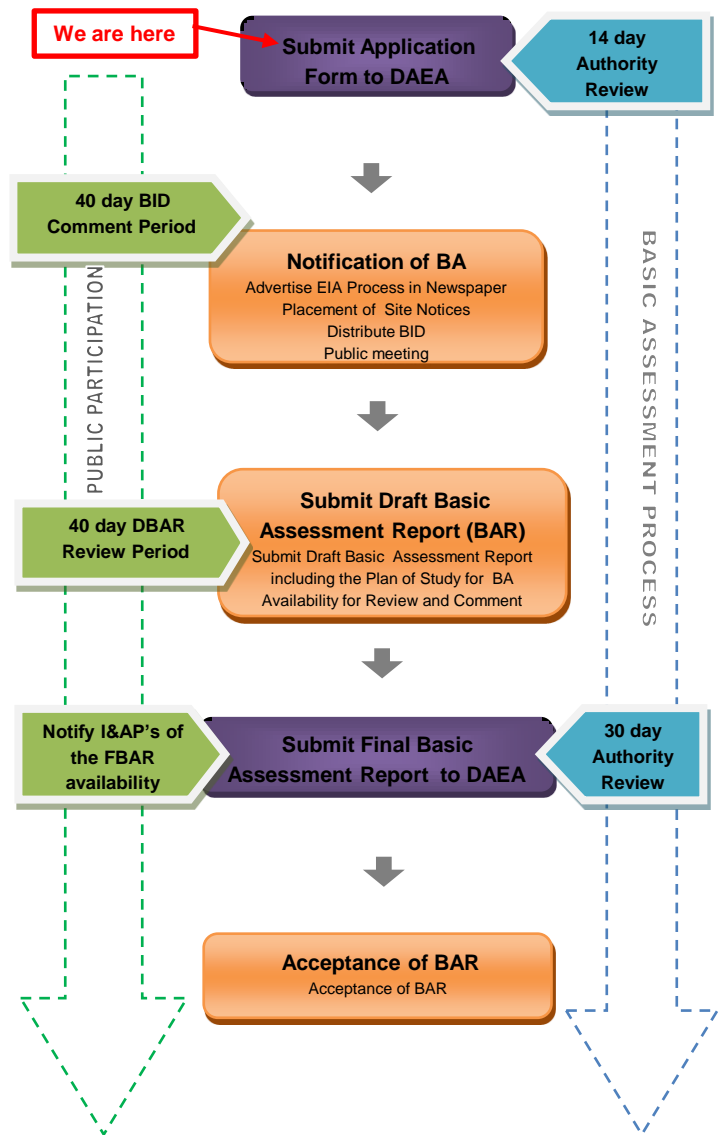
As part of the initial investigations for the site, the following specialist studies will be undertaken:

- Wetland Impact Assessment.
- Heritage Exemption Application / Impact Assessment (as needed).

### Integrated Water Use License

The BA process will include the concurrent submission of an Integrated Water Use License Application (IWULA) to the Department of Water Affairs in terms of the National Water Act (Act No 36 of 1998), Section 21 (c) and (i).

### BA Process Flow Diagram



## Public Participation Process (PPP)

The public participation process is an integral part of the BA process, and continues throughout the life of the project. The key objective of public participation during a BA is to identify issues of concern to the community and proposed suggestions for enhanced benefits.

I&APs include any person who will be directly or indirectly involved and/or affected by the project. You have been identified as an I&AP who may want to receive information regarding the proposed project and be allowed to provide your input into the environmental assessment process. All comments will be recorded and presented to the project team and regulatory authorities. You will receive feedback on how your comments have been taken into account and the outcome of the assessment.

Steps in, and scheduling of, the process are as follows:

### STEP 1: Notify I&APs and Identify Issues

- Notify I&APs of the proposed project.
- Identify any issues / concerns of I&APs.
- Provide I&APs with Background Information Documents (BID) on the Project, including a locality map.
- Request I&APs to register their interests in the project to receive further project information.

### STEP 2: I&AP Review of Draft BA Report

- Prepare a comments and response report which includes issues and concern raised by I&APs for inclusion in the Draft BA Report (BAR).
- Notify all registered I&APs on the project database of the release of the Draft BAR for a 40 day comment period.
- Copies of the Draft BAR will be made available for public review and on the GCS website ([www.gcs-sa.biz](http://www.gcs-sa.biz)).

### STEP 3: Final BA Report

- Include comments received from I&APs during the review process in the compilation of the Final BAR before it is submitted to the DAEA for a decision.
- Notify registered I&APs of the submission of the Final BAR to the DAEA.
- Copies of the Final BAR will be made available for public review and on the GCS website ([www.gcs-sa.biz](http://www.gcs-sa.biz)).

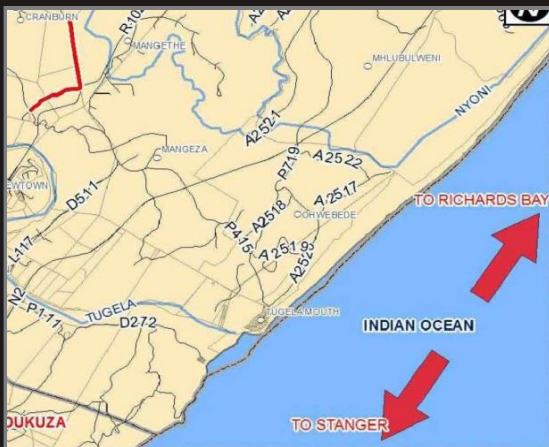


## Environmental Assessment Practitioner: GCS (PTY ) LTD

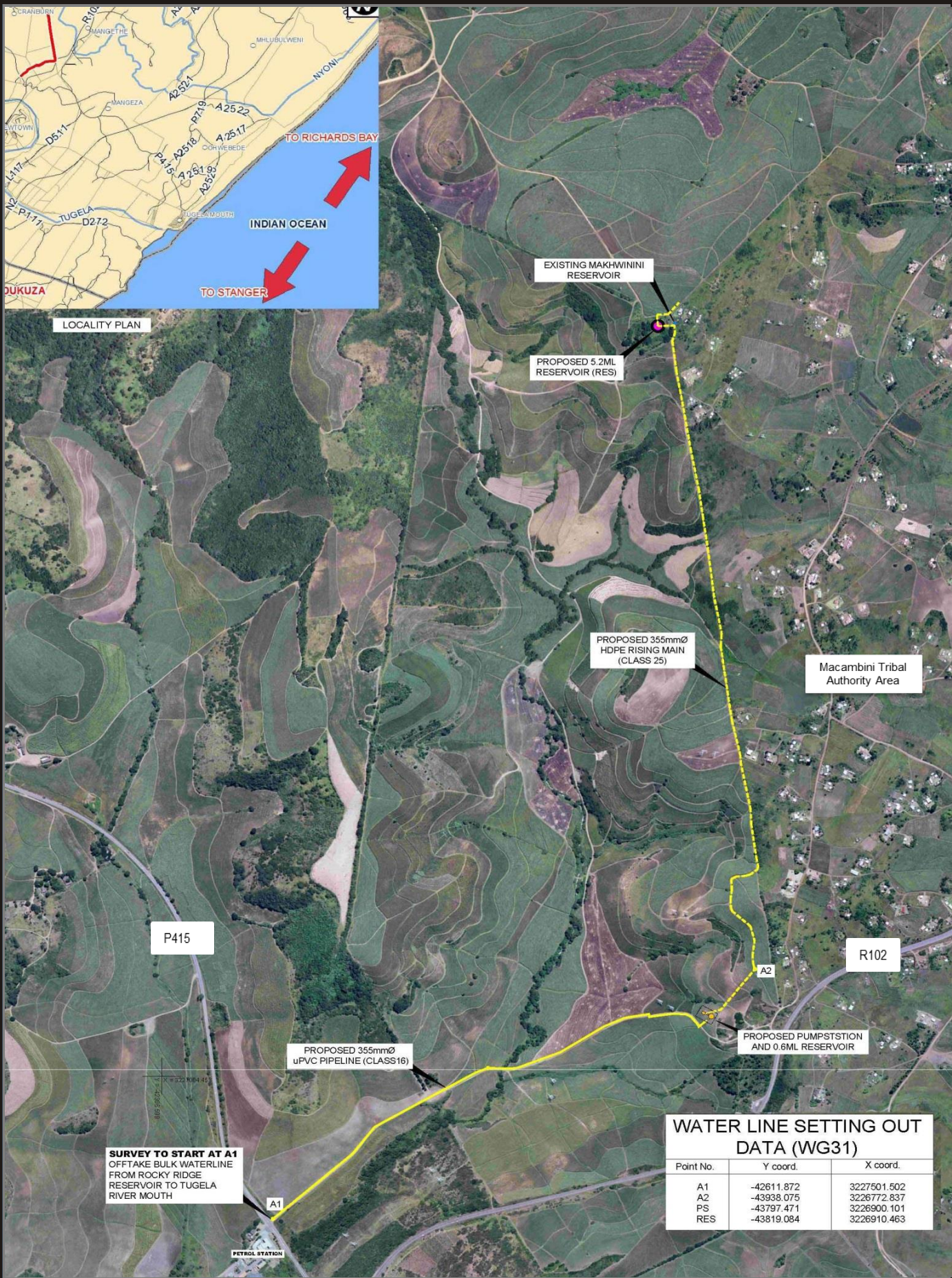
I&AP's may forward their written comments along with their name, organization, contact details and an indication of any direct business, financial, personal or other interest which they have in the application by post, fax or email to:

<p><b>GCS Pty Ltd</b>                  Mrs Kelly Taylor                  Tel: 031 764 7130                  Fax: 031 764 7140                  Email <a href="mailto:kellyt@gcs-sa.biz">kellyt@gcs-sa.biz</a></p>	<p><b>Postal Address:</b>                  PO Box 819                  Gillitts                  3603                  South Africa</p>
---	---

# Macambini Bulk Water Supply (Phase 4) Locality Map



LOCALITY PLAN



**SURVEY TO START AT A1**  
OFFTAKE BULK WATERLINE  
FROM ROCKY RIDGE  
RESERVOIR TO TUGELA  
RIVER MOUTH

### WATER LINE SETTING OUT DATA (WG31)

Point No.	Y coord.	X coord.
A1	-42611.872	3227501.502
A2	-43938.075	3226772.837
PS	-43797.471	3226900.101
RES	-43819.084	3226910.463