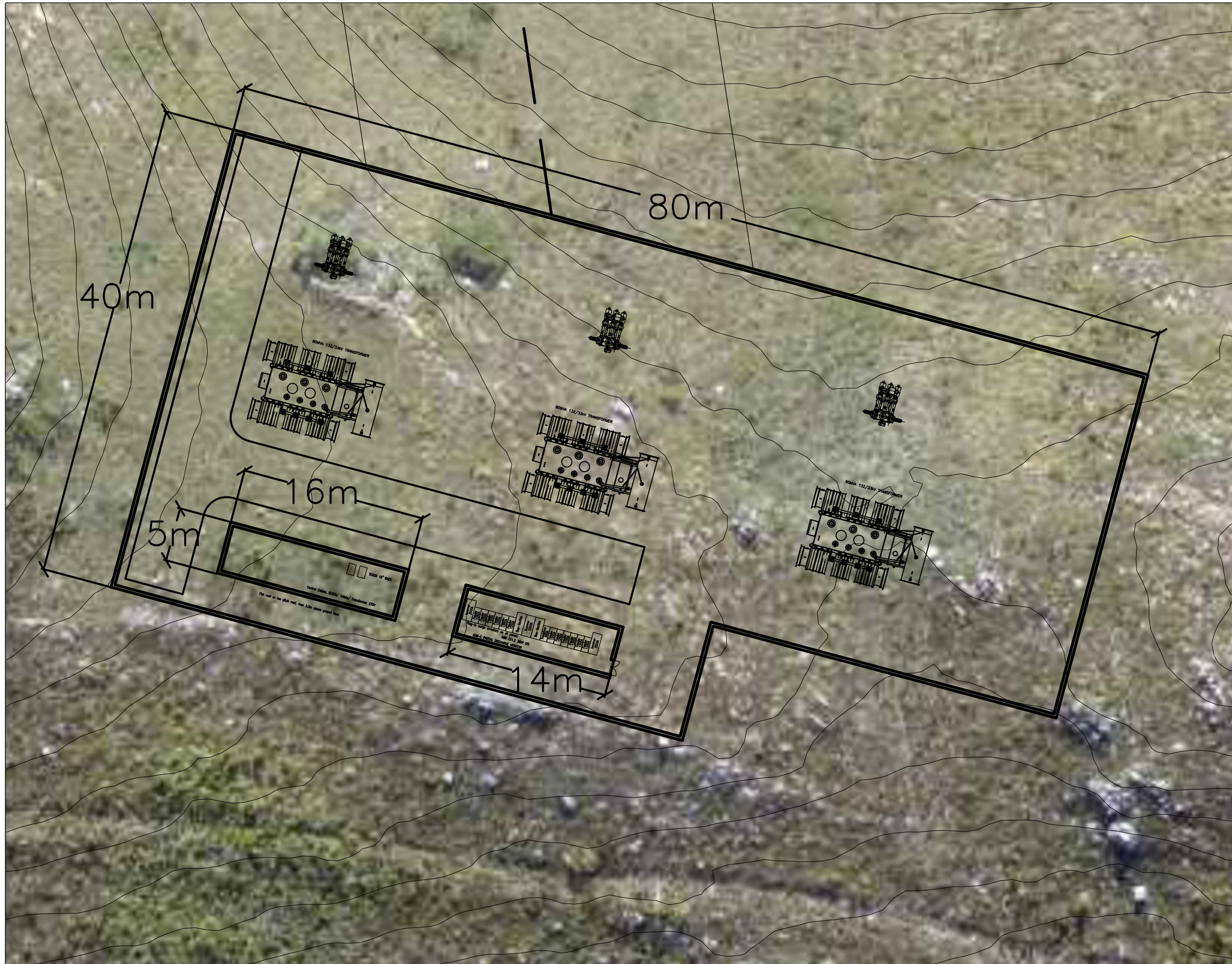


GENERAL NOTES

1. -



DRAWING NUMBER CODES

DISCIPLINE	
WAT	= WATER
SEW	= SEWER
RDS	= ROADS
SW	= STORM WATER
ELE	= ELECTRICAL
STR	= STRUCTURAL
MEC	= MECHANICAL
EW	= EARTHWORKS
TRA	= TRANSPORTATION

SUBDIVISION No.	
LS	= LONGSECTION
XS	= CROSS SECTION
DET	= DETAILS
GA	= GENERAL ARRANGEMENT
SP	= SITE & KEY PLANS

STATUS	
TEN	= TENDER
PRE	= PRELIMINARY
CON	= CONSTRUCTION
ASB	= AS BUILT

05					DESIGNED
04					CHECKED
03					
02					
01					DRAWN
NO.	DRAWN	REVISION	REV	DATE	

PROJECT DIRECTOR

PROJECT MANAGER

**AFRICOAST CONSULTING ENGINEERS**

Cnr. Rose/Havelock Street  
Central, Port Elizabeth, 6001

PO Box 5104  
Walmer, 6065

Tel: +27 (41) 505-8000  
Fax: +27 (41) 585-3437  
info@afriacoast.com

ISO 9001 CERTIFIED

**ROODEPLAAT WINDFARM  
132KV SUBSTATION**

<b>DRAWING NUMBER :</b>				SCALE:	
R1011 - ELE - DET - 01				AS SHOWN	
PROJECT No.	DISCIPLINE	SUB No.	DWG No.	STATUS	REVISION