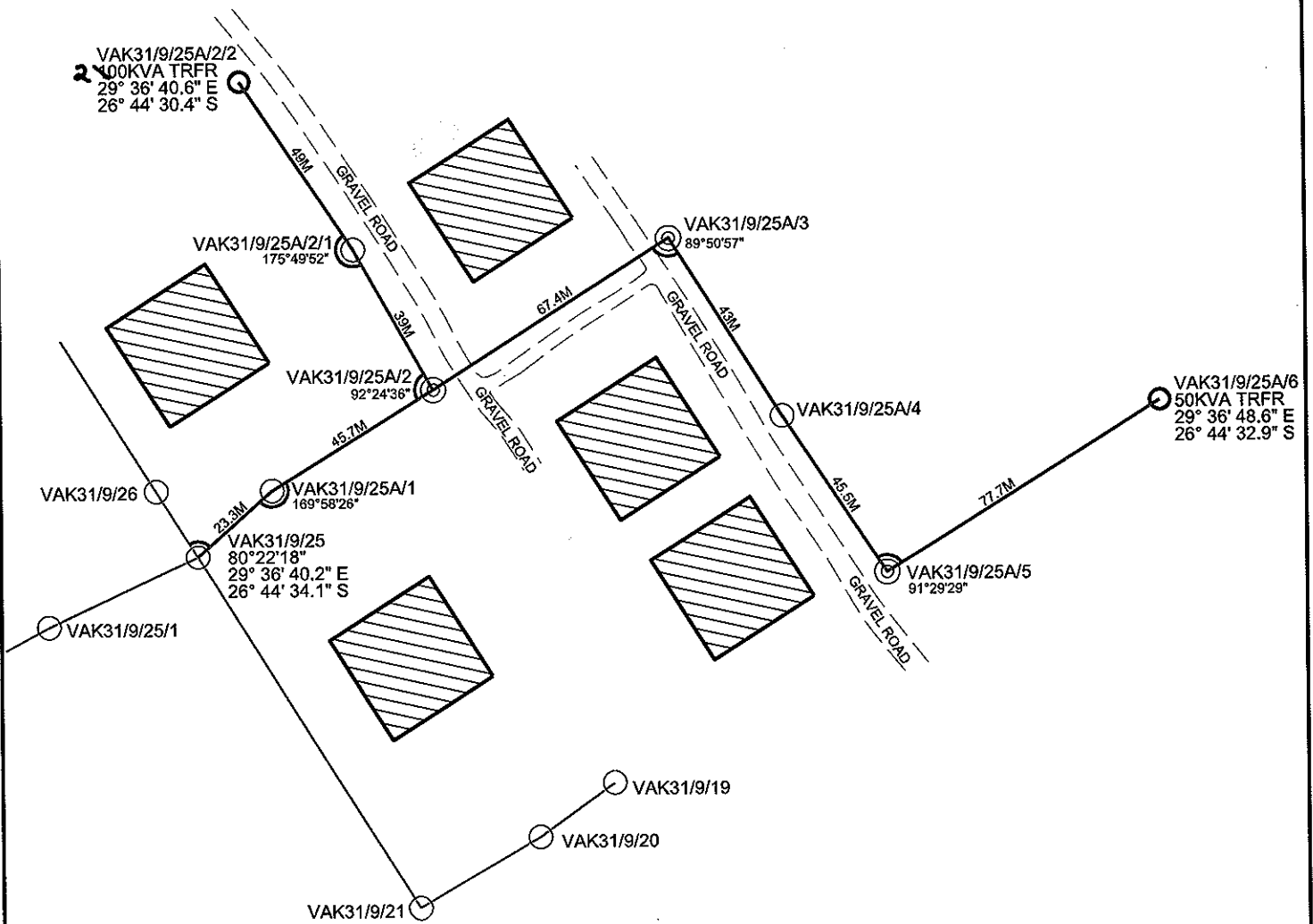
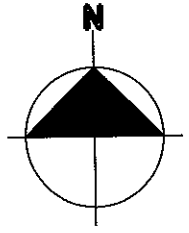


W0884

SCALE 1:1500



PORTION 35

MORGENZON 466-IS

Note: RED PEGS on site indicate structure position.

PLEASE NOTE:

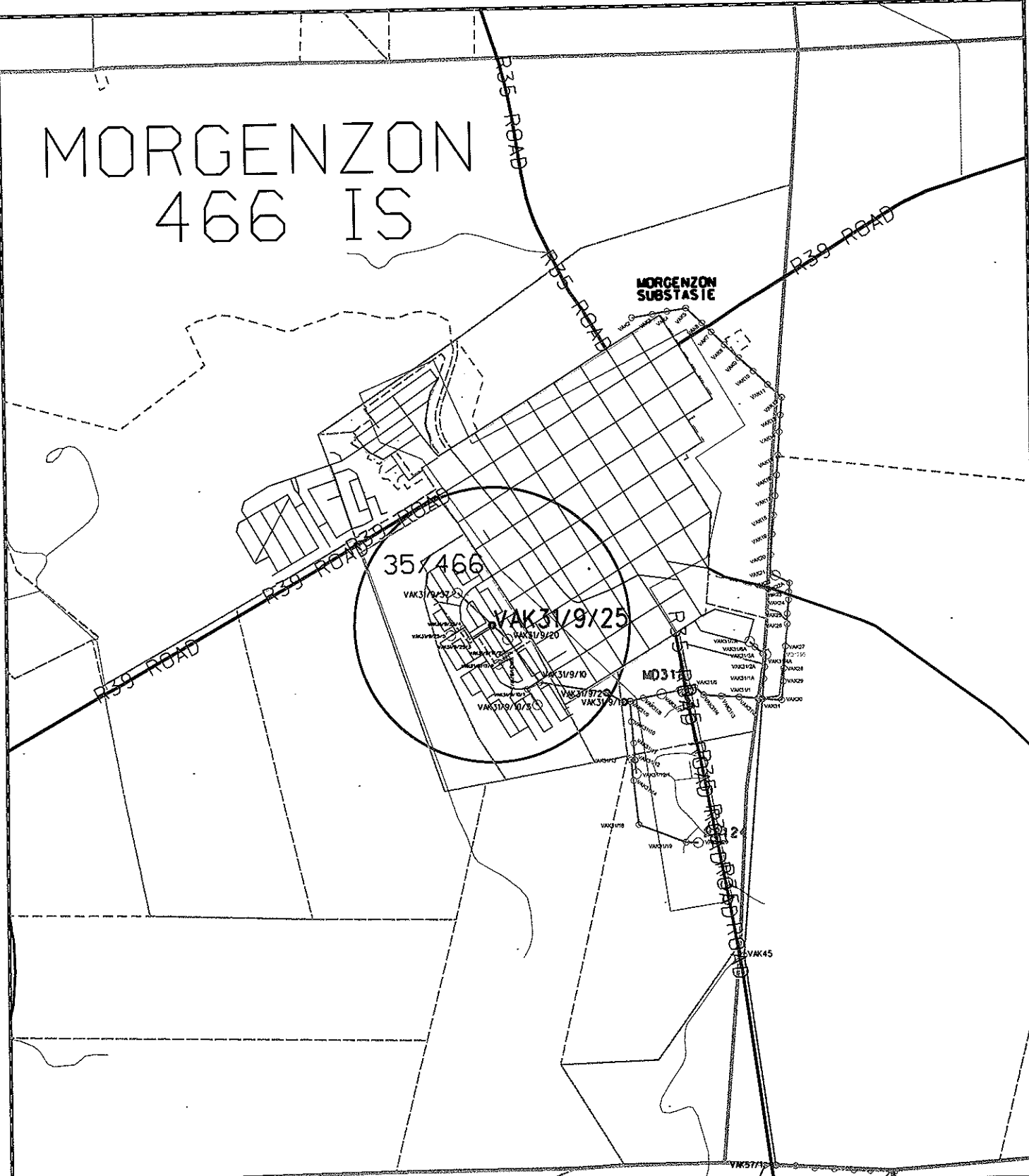
No protected trees/plants may be cut/trimmed/removed unless the applicable tree permit is issued and handed to the construction contractor.

50 & 300kVA Trfr.
 Project no: MORGENZON LINE STRENGTHENING
 NAME: MORGENZON LINE STRENGTHENING
 Drawn by: C.FOURIE
 Date: 17 february 2015
 Surveyed by:

T-Off Pole no: VAK31/9/25
 T-Off angle: 80°22'18"
 22 kV Line
 390.6m Length of Line

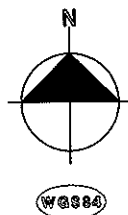
DASHED RED LINE INDICATES POWERLINE ROUTE

MORGENZON 466 IS



Route plan
Mpumalanga Operating Unit

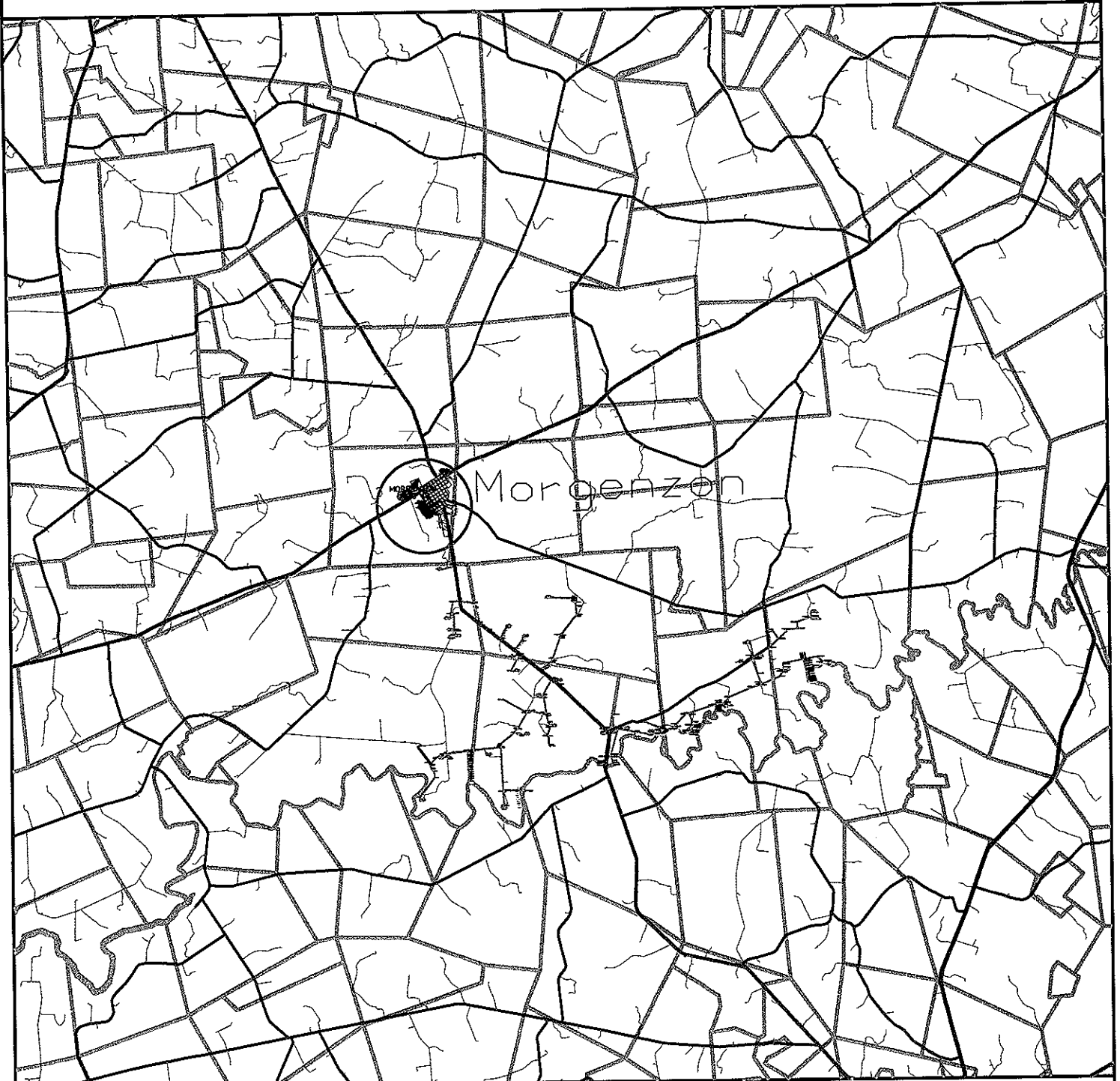
Disclaimer
Geographic Mapping Withank are not responsible for any errors in external datasets displayed on this map. The following external datasets were used: Cadastral and Topographical



Feeder:	MORGENZON-VAALKOP 22kV
Customer:	ESKOM
Project No:	MORGENZON LINE STRENGTHENING
FSA / TSA Area:	MOU - STANDERTON CNC

Portion of map no:	
Portion of map no:	
Scale:	1:25 000

LOCALITY PLAN



Disclaimer
Geographic Mapping Witbank
are not responsible for any errors
in national datasets displayed on this map.



COORDINATE SYSTEM:LO84/29

SCALE 1:250 000

Information from official maps reproduced under Government printers copyright authority No. 4138 of 28/03/1969



Mpumalanga Operating Unit
Land Development

P.O.Box 223
Witbank 1035
Tel 013 - 693 3121
Fax 013 - 693 3261

Feeder:	MORGENZON-VAALKOP 22kV	Surveyor:	
Customer:	ESKOM	Geographic mapping:	C.FOURIE
Project No:	MORGENZON LINE STRENGTHENING	Date compiled:	
Portion of map no:		T-OFF POLE COORD:	X= -60792.6680 29° 36' 40.2" E Y= 2959277.3530 26° 44' 34.1" S
Page:	1 of 3	Revised by:	
		Revision date:	