

Project Reference: 710.20029.00008

03 February 2017

TSHIPI É NTLE MANGANESE MINING (PTY) LTD
PROPOSED EMP / EA AMENDMENT PROCESS TO CATER FOR CHANGES TO THE INFRASTRUCTURE
LAYOUT AT THE TSHIPI BORWA MINE

Dear Sir/Madam

1. INTRODUCTION

Tshipi é Ntle Manganese Mining (Pty) Ltd (Tshipi) currently operates the Tshipi Borwa Mine located on the farms Mamatwan 331 (mining right and surface use areas) and Moab 700 (surface use area), approximately 18 km to the south of Hotazel in the John Taolo Gaetsewe District Municipality in the Northern Cape Province.

The mine holds a mining right (NC/30/5/1/2/2/0206MR) and an Environmental Management Programme (EMP) issued and approved by the Department of Minerals and Energy (currently the Department of Mineral Resources), an environmental authorisation (EA) (NC/KGA/KATHU/37/2008) issued by the Department of Tourism, Environment and Conservation (currently the Department of Environment and Nature Conservation) and an Integrated Water Use License (IWUL) (10/D41K/AGJ/1735) issued by the Department of Water Affairs (currently the Department of Water and Sanitation). In terms of environmental law, the approved EMP is now deemed to be an EA.

Tshipi is in the process of amending its approved EMP to cater for changes to its approved infrastructure layout. In accordance with Section 21 of the National Water Act (No 36 of 1998), the existing IWUL will also need to be amended to cater for the proposed changes.

SLR Consulting (Africa) (Pty) Ltd, an independent firm of environmental consultants, has been appointed by Tshipi to manage the EMP amendment process and the IWUL amendment process.

2. EMPR AMENDMENT PROCESS

Tshipi is proposing to amend its approved EIA and EMP to cater for changes to the approved infrastructure layout that have already taken place at the mine. These changes are outlined in Table 1 below and should be read in conjunction with

Figure 1 (illustrates the approved infrastructure layout) and Figure 2 (illustrates changes to the approved infrastructure layout).

Table 1: Changes to the approved infrastructure layout

Approved EIA and EMPr	Changes to the infrastructure layout
The approved EMPr makes provision for the deposition of waste rock onto two waste rock dumps (northern and western waste rock dumps).	Tshipi has increased in the number, position, volume and layout of the waste rock dumps.
The approved EMPr makes provision for an anaerobic digester sewage treatment plant for the treatment of 60 m ³ of sewage per day.	The design of the sewage treatment plant has changed to a sludge activated system and is capable of treating 96 m ³ of sewage per day. The position has also changed.
The approved EMPr makes provision for three stormwater dams: <ul style="list-style-type: none"> • A 10 ML stormwater dam for the collection of dirty water from the mining workshop and primary crusher area • An 8 ML stormwater dam for the collection of dirty water from around the plant area • A 6.3 ML settling dam that would receive dirty water from the pit dewatering and the various storm water dams described above. 	The approved stormwater dams have been combined to form one 24.3 ML stormwater dam. The position has also changed. In addition to this, an addition 4 ML stormwater dam has been established at the contractor's site. In addition to this, provision has been made to update the overall stormwater management system to ensure compliance with Government Notice Regulation No. 704 of June 1999 for the separation of clean and dirty water.
The approved EMPr makes provision for office, plant, workshop and related infrastructure.	The position of the office, plant, workshop and related infrastructure has changed.
The approved EMPr makes provision for two low grade stockpiles.	The approved low grade stockpiles have been combined to form one facility and the position has changed.
The approved EMPr makes provision for a fines stockpile.	The position of the approved fines stockpile has changed.
The approved EMPr makes provision for a railway siding between the regional railway line (adjacent to the R380) and the Tshipi silo/loading area.	The design of the approved railway siding has been changed and the length has been increased.
The approved EMPr makes provision for a product stockpile area near the silo and railway siding.	An additional temporary product stockpile area has been established near the ROM pad.
No specific reference to a tyre bay is included in the approved EMPr	Tshipi has established a designated tyre bay.
The approved EMPr makes provision for one topsoil stockpile area.	A second small topsoil stockpile area has been established.

In addition to the above Tshipi is proposing to expand its approved topsoil stockpile (Figure 2).

3. LEGAL COMPLIANCE

The relevant applications for authorisation that need to be made for the proposed project in terms of the environmental legislation are listed in Table 2 below.

Table 2: Applicable legislation

Legislation	Listed Activities	Key Process Elements	Competent Authority
Mineral and Petroleum Resources Development Act (No. 28 of 2002)	Section 102 application	Environmental Impact Assessment Report and EMP / EA Amendment report	Department of Mineral Resources (Northern Cape)
National Environmental Management Act (No. 107 of 1998) Environmental Impact Assessment Regulations, 2014	No listed activities (Regulation 31 of EIA Regulations, read with NEMA: Substantive amendment)		Department of Mineral Resources (Northern Cape)
National Water Act (No	Section 21 (a – taking water from a water	Amendment of	Department of Water &

36 of 1998)	resource), (g – disposal of waste that may detrimentally impact a water resource) and (j – removal of underground water to allow to the continuation of an activity or safety for people) water uses	the existing IWUL and related management plans	Sanitation
-------------	--	--	------------

4. PUBLIC CONSULTATION PROCESS

You have been identified as an interested and affected party (IAP) who may want to be informed about the proposed project and have input into the environmental assessment processes and report. You will be given the opportunity to provide input to the project as part of the public consultation process. As part of this process you will have an opportunity to review and comment on the EMP amendment report. All comments will be recorded and included in the final report submitted to the Department of Mineral Resources for decision-making.

In addition to the above, a public meeting has been arranged as part of the public participation process. The details of the public meeting are provided in the table below:

Date	Venue	Time
21 February 2017	The Hotazel Recreation Club	16h00 – 18h00

To receive additional information on the environmental assessment process and/or project, please submit your name, contact information and interest in the matter in writing to the contact person given below. To ensure that your comments are included in the EMP amendment report, these should be provided at the public meeting (described above) and/or be sent in writing using the attached comment sheet to the below consultant by 24 February 2017.

Regards

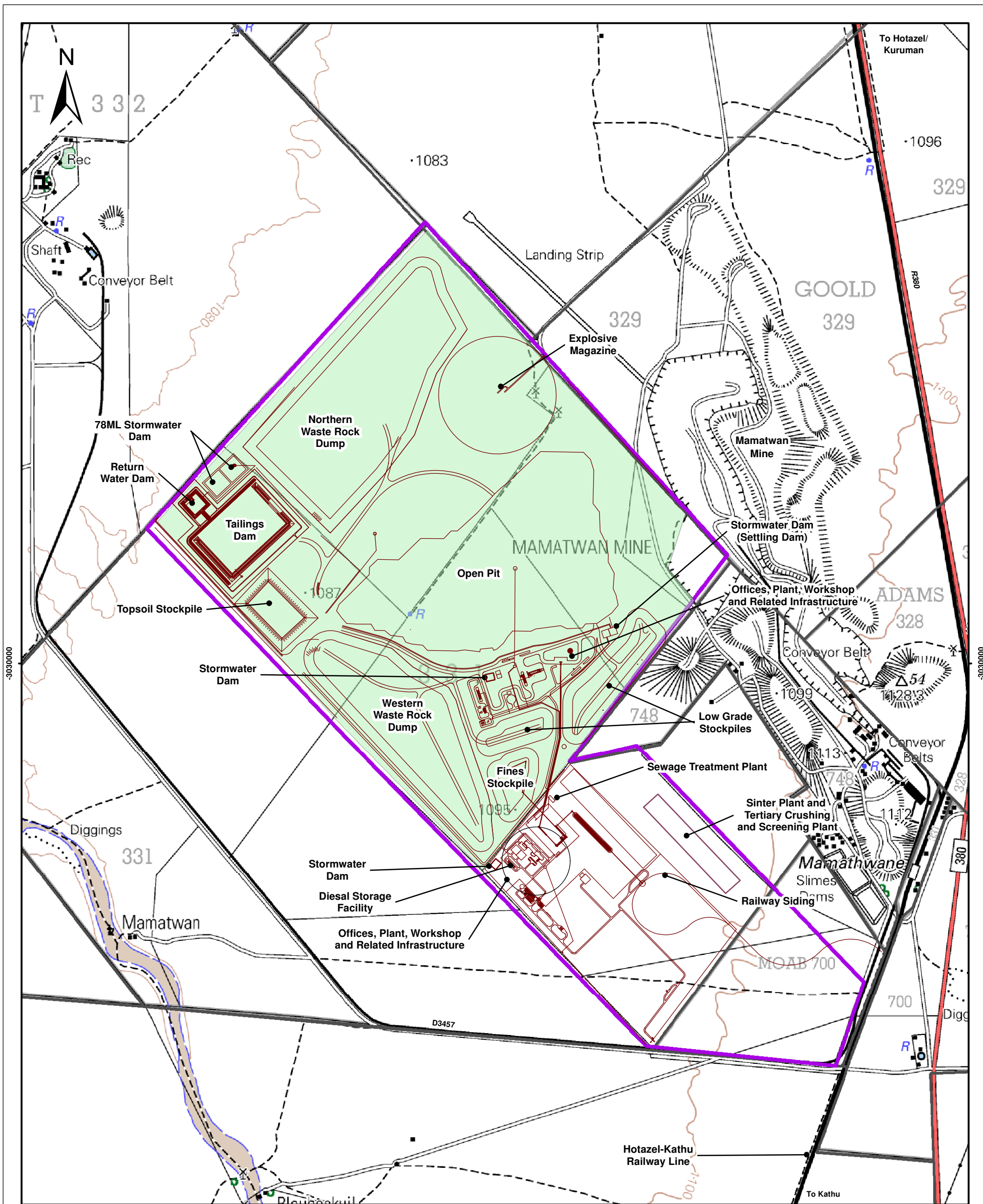
Natasha Smyth

E-mail: nsmyth@slrconsulting.com

Tel: 011 467 0945

Fax: 011 467 0978

For SLR Consulting (Africa) (Pty) Ltd



Legend

- Approved Infrastructure
- sinter plant
- Approved Mining Right Area
- Surface Use Area

TSHIPI E' NTLE MANGANESE MINING

Figure 1

**Approved Infrastructure Layout
(Metago, May 2009)**



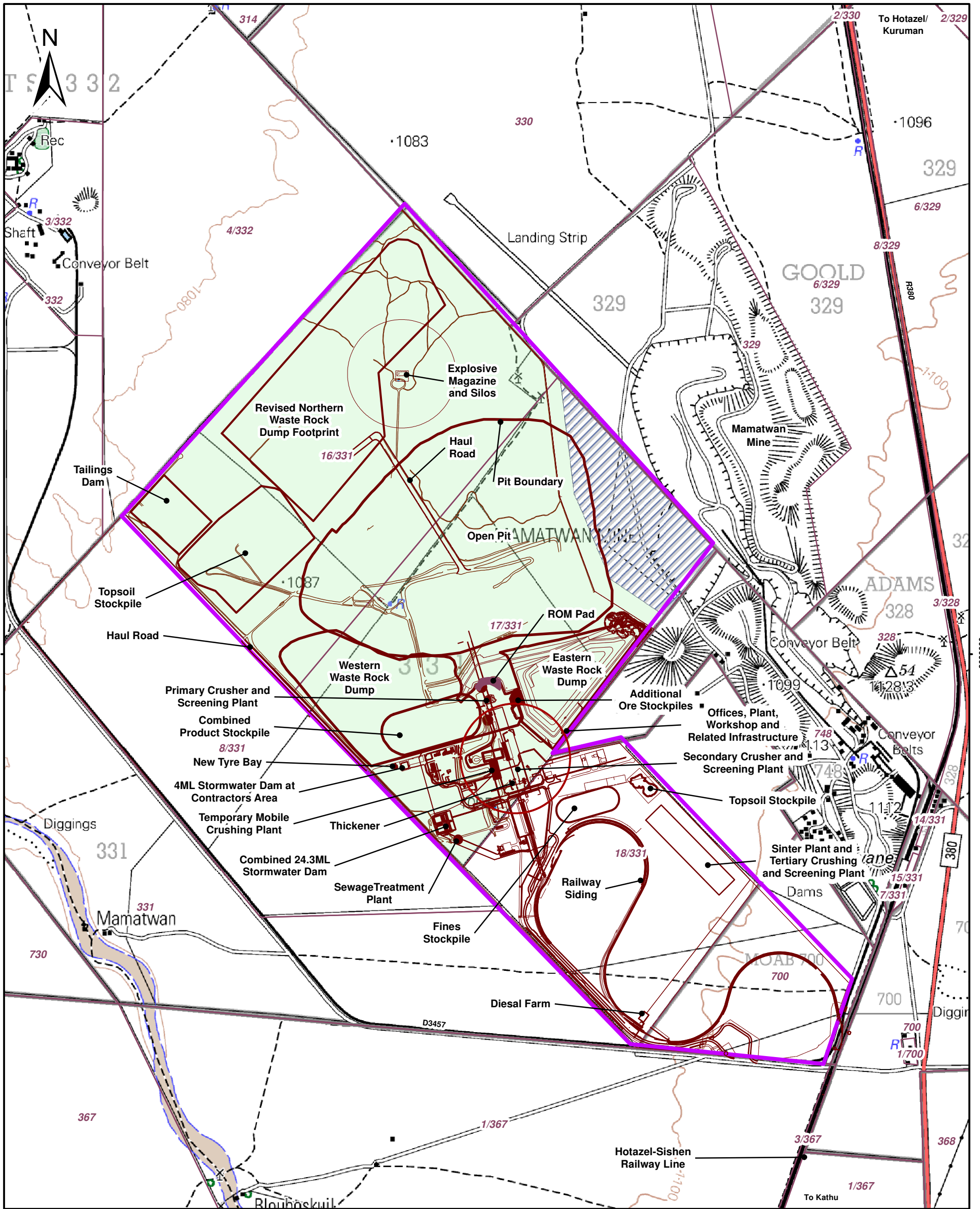
SLR Consulting (Africa) (Pty) Ltd
P O Box 1596, Cramerview, 2060, South Africa
Tel: +27 (11) 467-0945 Fax: +27 (11) 467-0978

0 500 1 000 Meters

Scale: 1:25 000 @ A3
Projection: Transverse Mercator
Datum: WGS1984, Lo23

710.220029.00008

June 2016



Legend

- Surface Use Area
- Approved Mining Right Area
- Boundary Mining Venture Area
- Mine Infrastructure

TSHIPI E' NTLE MANGANESE MINING

Figure 2
Infrastructure Layout



SLR Consulting (Africa) (Pty) Ltd
P.O. Box 1596, Cramerview, 2060, South Africa
Tel: +27 (11) 467-0945 Fax: +27 (11) 467-0978

0 500 1 000 Meters

Scale: 1:25 000 @ A3
Projection: Transverse Mercator
Datum: WGS1984, Lo23

710.20029.00008

June 2016

TSHIPI É NTLÉ MANGANESE MINING (PTY) LTD

PROPOSED EMP / EA AMENDMENT PROCESS TO CATER FOR CHANGES TO THE
INFRASTRUCTURE LAYOUT AT THE TSHIPI BORWA MINE

COMMENTS AND RESPONSE SHEET

NAME			
FARM/PROPERTY or ORGANISATION			
STREET OR POSTAL ADDRESS			
		POSTAL CODE	
WORK/ DAY TELEPHONE NUMBER		FAX NUMBER	
CELL PHONE NUMBER		E-MAIL	
PREFERRED CORRESPONDENCE (circle)	POST	FAX	EMAIL
SMS			
DATE		Signature	

PLEASE WRITE YOUR COMMENTS AND QUESTIONS HERE:

--

Please return completed forms to:

Natasha Smyth or Mase Rantsieng

(011) 467 0978 (Fax) or PO Box 1596, Cramerview 2060

nsmyth@slrconsulting.com and/or mrantsieng@slrconsulting.com