

30 August 2019

Dear Interested and/or Affected Party,

NOTIFICATION WITH RESPECT TO THE APPLICATION FOR A MINING RIGHT FOR THE PROPOSED ZEBEDIELA NICKEL MINE ON VARIOUS PORTIONS OF THE FARMS UITLOOP 3 KS, AMATAVA 41 KS, BLOEMHOF 4 KS, AND PIET POTGIETERSRUST TOWN AND TOWNLANDS 44 KS, IN THE MOGALAKWENA LOCAL AND WATERBERG DISTRICT MUNICIPALITIES OF THE LIMPOPO PROVINCE OF SOUTH AFRICA

Introduction

Lesego Platinum Uitloop (Pty) Ltd (LPU) intends to develop a nickel mining operation near Mokopane in the Limpopo Province of South Africa. LPU appointed Exigo Sustainability (Pty) Ltd as independent Environmental Assessment Practitioners to facilitate the Scoping and Environmental Impact Assessment (S&EIA) Process for the proposed Zebediela Nickel Mine development. The S&EIA Process will be undertaken in terms of the National Environmental Management Act (Act 107 of 1998) (NEMA), the National Environmental Management Waste Act (Act 59 of 2008) (NEM:WA), the Mineral and Petroleum Resources Development Act (Act 28 of 2002) (MPRDA) as well as the National Water Act (Act 36 of 1998) (NWA). Prior to the development of the project LPU will have to acquire the necessary mining right and environmental authorisation, and relevant licences and permits to commence with mining and related activities.

Proposed Mining Operations

The proposed mining operations constitute a nickel mining and beneficiation operation on various portions of farms as indicated above. The project falls under the jurisdiction of the Mogalakwena Bay Local Municipality located within the Waterberg District Municipality. The site is located approximately 9 km north-east of the town of Mokopane and approximately 250 km north-northeast of Johannesburg. Figure 1 below indicates the location of the project site. The project area can be accessed from Johannesburg using the N1 highway to Mokopane and then utilizing the Percy Fyfe road to the project area. The proposed mining right area will be located on farms where LPU currently owns the three prospecting rights namely; Uitloop 3 KS (1,925,29 ha), Amatava 41 KS and Bloemhof 4 KS (2620,34 ha), and Piet Potgietersrust Town and Townlands 44 KS (115,6 ha). The Mining Right Area covers a combined area of roughly 4,660.90 ha, mine infrastructure is however only planned to be located on approximately 350 ha of the larger Mining Right Area (refer to Figure 2). The following coordinates serve as the centre point of the proposed open pit:

Latitude: 24°7'17.154"S; Longitude: 29°1'5.63"E

The proposed Zebediela Nickel Mine will predominantly mine nickel and possibly platinum group minerals (PGM's) and associated minerals (platinum, palladium, rhodium, gold, ruthenium, iridium, osmium, copper, cobalt and chromite), iron ore and vanadium from magnetite. The resource will be exploited by open pit mining methods. The top 40 m to 50 m of the disseminated sulphide material is oxidized (Oxide Zone) and will be stockpiled on an overburden facility. Concurrent backfilling will take place from year 10 once sufficient capacity exists in the open pit. The entire pit below the oxide zone is developed in mineralised material (Sulphide Zone) and ore would be trucked out and hauled to a processing plant. The open pit design has an approximate pit length of 1,150 m, with an average width on surface of 639 m and a depth of 220 m. A 5 m high and 10 m wide berm will be constructed around the entire pit perimeter. The mineral resources included in this project are extensive and as a result, the mining right application will be for a 30 year life of mine (LOM). The first 5 years will be used for construction of the access roads, plant infrastructure, fencing and stripping of the open pit. The proposed project entails the construction of a processing plant and associated infrastructure, overburden facility, ore stockpiles, topsoil stockpile, Tailings Storage Facility (TSF), access and haul roads as well as pipelines.

Authorisations required

As part of the planning phase of the project, the following authorisations/licences/rights must be obtained from the relevant Government Departments:

1. **Environmental Authorisation (EA):** an Environmental Impact Assessment (EIA) in terms of NEMA read with the EIA Regulations, 2014 (GNR 982 of 4 December 2014 as amended). The following activities listed in GNR 983, GNR 984 and GNR 985 of 4 December 2014 (as amended) are potentially applicable to the proposed project and require an environmental authorization *inter alia*: GNR 983: Activity 9, 10, 12, 13, 24, 25, and 56; GNR 984: Activity 4, 6, 15, 16, and 17; and GNR 985: Activity 4, 12, 14, and 18. The EA application subject to a S&EIA process was submitted to the Department Mineral Resources (DMR): Limpopo Region.
2. **Waste Management Licence:** in terms of section 20 of the NEM:WA read with the GNR 982 of 4 December 2014 (as amended), for the undertaking of waste management activities listed in GNR 921 Category B, Activity 10 and 11 of 29 November 2013 (as amended). An integrated application in terms of the NEMA and NEM:WA was submitted to the DMR.
3. **Mining Right:** a Mining Right Application (MRA) in terms of section 22 of the MPRDA was submitted to the DMR.
4. **Water Use Licence (WUL):** the project will entail the undertaking of water uses as listed in section 21 of the NWA for 21(a), 21(b), 21(c), 21(g), 21(i) and 21(j) water uses *inter alia*. A WUL application in terms of section 40 and 41(4) of the NWA will be submitted to the Department of Water and Sanitation (DWS).

30 Day Registration Period

In order to ensure that you are registered as an interested and/or affected party (I&AP) or if you require further information on any of the abovementioned applications and/or proposed project activities; please submit your name, contact information, interest and relevant issues on the matter by completing the attached registration form by **Monday, 30 September 2019** and sending it to:

Ms C. Uys (Exigo Environmental Unit)
Tel: 012 751 2160
Fax: 086 607 2406
Mail: Postnet Suite 74, Private Bag X04, Menlo Park, 0102
Email: chantal@exigo3.com

Please note that the Draft Scoping Report (DSR) for the proposed project will be made available for review to I&APs for comment in due course. Consultation with I&AP's will be ongoing throughout the Environmental Impact Assessment process and consultation meetings will be arranged with the relevant parties. Please note that a public meeting/open day will be scheduled and an invitation will be sent to I&AP's once the date becomes available.

Kind regards,

Chantal Uys (*sent electronically*)
Environmental Assessment Practitioner
Exigo Sustainability (Pty) Ltd

COMMENT SHEET

NOTIFICATION WITH RESPECT TO THE APPLICATION FOR A MINING RIGHT FOR THE PROPOSED ZEBEDIELA NICKEL MINE ON VARIOUS PORTIONS OF THE FARMS UITLOOP 3 KS, AMATAVA 41 KS, BLOEMHOF 4 KS, AND PIET POTGIETERSRUST TOWN AND TOWNLANDS 44 KS, IN THE MOGALAKWENA LOCAL AND WATERBERG DISTRICT MUNICIPALITIES OF THE LIMPOPO PROVINCE OF SOUTH AFRICA

Project Reference: LP30/5/1/2/3/2/1(10174)EM & LP30/5/1/2/2/10174MR

Title:		Tel number (Work):	
First Name:		Tel number (Cell):	
Surname:		Fax number (Work):	
Capacity/Interest		E-mail address:	
Postal/Residential Address			

Comments on the proposed development (You are welcome to use separate sheets)

1. Environmental Issues:	(such as water, ecology, pollution etc.)	2. Socio-economic Issues:	(such as job creation, safety and security)
3. Cultural / Historical Issues:	(such demolition of graves/old buildings.)	4. Any other Issues or Comments:	

Please return this registration sheet by 30 September 2019 via any of the following communication methods, attention to:

Ms Chantal Uys
Tel: 012 751 2160
Fax: 086 607 2406
Email: chantal@exigo3.com
Post: Postnet Suite 74, Private Bag X04, Menlo Park, 0102

30 Augustus 2019

Geagte Geïnteresseerde en Geëffekteerde Party,

KENNISGEWING MET BETREKKING TOT DIE MYNREG AANSOEK VIR DIE VOORGESTELDE ZEBEDIELA NIKKEL MYN OP VERSKEIE GEDEELTES VAN DIE PLASE UITLOOP 3 KS, AMATAVA 41KS, BLOEMHOF 4 KS, EN PIET POTGIETERSRUST TOWN AND TOWNLANDS 44 KS, IN DIE MOGALAKWENA PLAASLIKE EN WATERBERG DISTRIK MUNISIPALITEITE VAN DIE LIMPOPO PROVINSIE VAN SUID AFRIKA

Inleiding

Lesego Platinum Uitloop (Edms.) Bpk (LPU) beoog om 'n nikkel mynbou operasie naby Mokopane in die Limpopo Provinsie van Suid-Afrika te ontwikkel. LPU het Exigo Sustainability (Edms.) Bpk aangestel as onafhanklike omgewingsassesseringspraktisyne om die omvangsbepaling en omgewingsimpakstudie (Scoping & Environmental Impact Assessment - S&EIA) proses vir die voorgestelde ontwikkeling van die Zebediela Nikkelmyn te fasiliteer. Die S&EIA-proses sal onderneem word ingevolge die Wet op Nasionale Omgewingsbestuur (Wet 107 van 1998) (NEMA), die Nasionale Omgewingsbestuur: Afval Wet (Wet 59 van 2008) (NEM:WA), die Minerale en Petroleumhulpbronne Ontwikkelingswet (Wet 28 van 2002) (MPRDA) sowel as die Nasionale Waterwet (Wet 36 van 1998) (NWA). Voor die ontwikkeling van die projek sal LPU die nodige mynreg en omgewingsmagtiging moet verkry, en die toepaslike lisensies en permitte om met mynbou en verwante aktiwiteite te begin.

Voorgestelde Myn Ontwikkeling

Die voorgestelde mynbedrywighede is vir 'n nikkel myn en veredelingsaanleg op verskillende gedeeltes van plase soos hierbo aangedui. Die projek val onder die jurisdiksie van die Mogalakwena Plaaslike Munisipaliteit binne die Waterberg Distriksmunisipaliteit. Die perseel is ongeveer 9 km noordoos van die dorp Mokopane en ongeveer 250 km noord-noordoos van Johannesburg geleë. Figuur 1 hieronder dui die ligging van die projekterrein aan. Toegang tot die projek area kan vanaf Johannesburg met die N1-snelweg na Mokopane verkry word en dan deur gebruik te maak van die Percy Fyfe-pad na die projekarea. Die voorgestelde mynregarea sal geleë wees op plase waar LPU tans drie prospekterregte besit, naamlik; Uitloop 3 KS (1 925.29 ha), Amatava 41 KS en Bloemhof 4 KS (2620.34 ha), en Piet Potgietersrust Town en Townlands 44 KS (115,267 ha). Die mynregarea beslaan 'n gesamentlike oppervlakte van ongeveer 4 660.90 ha, maar myn-infrastruktuur word egter beplan om op ongeveer 350 ha van die groter mynregarea geleë te wees (verwys na Figuur 2). Die volgende koördinate dien as die middelpunt van die voorgestelde oopgroef put:

Breedtegraad: 24°7'17.154"S; Lengtegraad: 29°1'5.63"E

Die voorgestelde Zebediela-nikkelmyn sal hoofsaaklik nikkel en moontlik platinumgroepminerale (PGM's) en gepaardgaande minerale (platinum, palladium, rodium, goud, ruthenium, iridium, osmium, koper, kobalt en chromiet), ystererts en vanadium van magnetiet, myn. Die hulpbron sal ontgin word deur oopgroefmynmetodes. Die boonste 40 m tot 50 m van die verspreide sulfiedmateriaal is geoksideer (oksiedsone) en sal op 'n bogrond (overburden) fasiliteit gestoor word. Gelyktydige terugvulling van die bogrond sal vanaf jaar 10 plaasvind sodra voldoende kapasiteit in die oopgroef put bestaan. Die hele put onder die oksiedsone bestaan uit gemineraliseerde materiaal (sulfiedsone) en erts sal na 'n-verwerkings-en veredelingsaanleg vervoer word. Die oopgroefput-ontwerp het 'n putlengte van ongeveer 1,150 m, 'n gemiddelde breedte op die oppervlakte van 639 m en 'n diepte van 220 m. 'n Wal van 5 m hoog en 10 m breed sal rondom die hele putonttrek gebou word. Die minerale hulpbronne wat by hierdie projek ingesluit is, is omvattend en gevolglik sal die mynregaansoek wees vir 'n 30-jaar leeftyd van myn (Life of Mine - LOM). Die eerste vyf jaar sal konstruksie van die toegangspaaie, aanleg-infrastruktuur, omheining en stroping van die oopgroef put behels. Myn infrastruktuur sal onder andere uit die volgende bestaan: verwerkings- en veredelingsaanleg en gepaardgaande infrastruktuur, bogrond (overburden en topsoil) fasiliteite, erts-stoor fasiliteite, sliksdam (Tailings Storage Facility - TSF), toegangs- en vervoerpaapie, asook pyplyne.

Goedkeurings wat benodig word

As deel van die impak beplanningsfase van die projek, moet die volgende magtigings/lisensies/regte verkry word van die betrokke staatsdepartemente:

1. **Omgewingsmagtiging (Environmental Authorisation - EA):** 'n Omgewingsimpakstudie (EIA) in terme van die NEMA, gelees met die 2014 EIA Regulasies (GNR 982 van 4 Desember 2014 soos gewysig). Die volgende gelyste aktiwiteite in GNR 983, GNR 984 en GNR 985 van 4 Desember 2014 (soos gewysig) is van toepassing op die voorgestelde projek en vereis omgewingsmagtiging *inter alia*: GNR 983: Aktiwiteit 9, 10, 12, 13, 24, 25, en 56; GNR 984: Aktiwiteit 4, 6, 15, 16, en 17; en GNR 985: Aktiwiteit 4, 12, 14, en 18. Die omgewingsmagtigingsaansoek onderhewig aan 'n S&EIA proses is voorgelê vir goedkeuring aan die Departement van Minerale Hulpbronne (Department of Mineral Resources - DMR): Limpopo Streek.
2. **Afvalbestuurslisensie:** in terme van artikel 20 van die NEM:WA, saamgelees met GNR 982 van 4 Desember 2014 (soos gewysig) vir die onderneming van afvalbestuursaktiwiteite gelys in GNR 921, Kategorie B, Aktiwiteit 10 en 11 van 29 November 2013 (soos gewysig). 'n Geïntegreerde aansoek in terme van die NEMA en NEM:WA is aan die DMR voorgelê.
3. **Mynreg:** 'n mynreg aansoek ingevolge artikel 22 van die MPRDA is aan die DMR voorgelê.
4. **Watergebruikslisensie:** die projek sal die onderneming van watergebruike behels soos gelys in artikel 21 van die NWA vir 21(a), 21(b), 21(c), 21 (g), 21(i) en 21(j) watergebruike *inter alia*. 'n Watergebruikslisensie (Water Use Licence – WUL) aansoek in terme van artikel 40 en 41(4) van die NWA sal by die Departement van Water en Sanitasie (DWS) ingedien word.

30 Dae Registrasie Periode:

Ten einde te verseker dat u geregistreer is as 'n belanghebbende en/of geaffekteerde party (I&AP) of as u verdere inligting verlang oor die bogenoemde aansoeke en/of voorgestelde projekaktiwiteite; verskaf asb u naam, kontakinligting, belangstelling en relevante aangeleenthede deur die aangehegte registrasievorm teen **Maandag, 30 September 2019** in te vul en te stuur na:

Me C. Uys (Exigo Omgewingseenheid)

Tel: 012 751 2160

Faks: 086 607 2406

Pos: Postnet Suite 74, Privaatsak X04, Menlo Park, 0102

Epos: chantal@exigo3.com

Let daarop dat die konsep-omvangbepalingsverslag (DSR) vir die voorgestelde projek mettertyd beskikbaar gestel sal word aan I&AP's vir kommentaar. Konsultasie met I&AP's sal deur die loop van die Omgewingsimpakassesseringproses voortgesit word en konsultasie vergaderings sal met die betrokke partye gereël word. Let daarop dat 'n publieke vergadering/ope dag geskeduleer sal word en 'n uitnodiging aan I&AP's gestuur sal word sodra die datum beskikbaar is.

Groete,

Chantal Uys (*elektronies gestuur*)
Omgewingsassesseringspraktisyn
Exigo Sustainability (Pty) Ltd

KOMMENTAAR BLAD

**KENNISGEWING MET BETREKKING TOT DIE MYNREG AANSOEK VIR DIE VOORGESTELDE ZEBEDIELA NIKKEL MYN OP VERSKEIE GEDEELTES VAN DIE PLASE UITLOOP 3 KS, AMATAVA 41KS, BLOEMHOF 4 KS, EN PIET POTGIETERSRUST TOWN AND TOWNLANDS 44 KS, IN DIE MOGALAKWENA PLAASLIKE EN WATERBERG DISTRIK MUNISIPALITEITE VAN DIE LIMPOPO PROVINSIE VAN SUID AFRIKA
Projek Verwysing: LP30/5/1/2/3/2/1(10174)EM & LP30/5/1/2/2/10174MR**

Titel:		Tel nommer (Werk):	
Naam:		Tel nommer (Sel):	
Van:		Faks nommer (Werk):	
Hoedanigheid/Belangstelling		E-pos adres:	
Pos/Residensiële Adres			

Kommentaar op die voorgestelde ontwikkeling (U is welkom om addisionele bladsye te gebruik)

5. Omgewingskwessies:	(soos water, ekologie, besoedeling ens.)	6. Sosio-ekonomiese kwessies:	(soos werkskepping, veiligheid en sekuriteit)
7. Kulturele / Historiese kwessies:	(soos slooping van grafte/ou geboue.)	Enige ander kwessies of kommentaar:	

Stuur asseblief hierdie registrasie vorm teen nie later as 30 September 2019 deur middel van enige van die volgende metodes van kommunikasie, vir aandag aan:

Me C Uys
Tel: 012 751 2160
Faks: 086 607 2406
Epos: chantal@exigo3.com
Pos: Postnet Suite 74, Privaatsak X04, Menlo Park, 0102

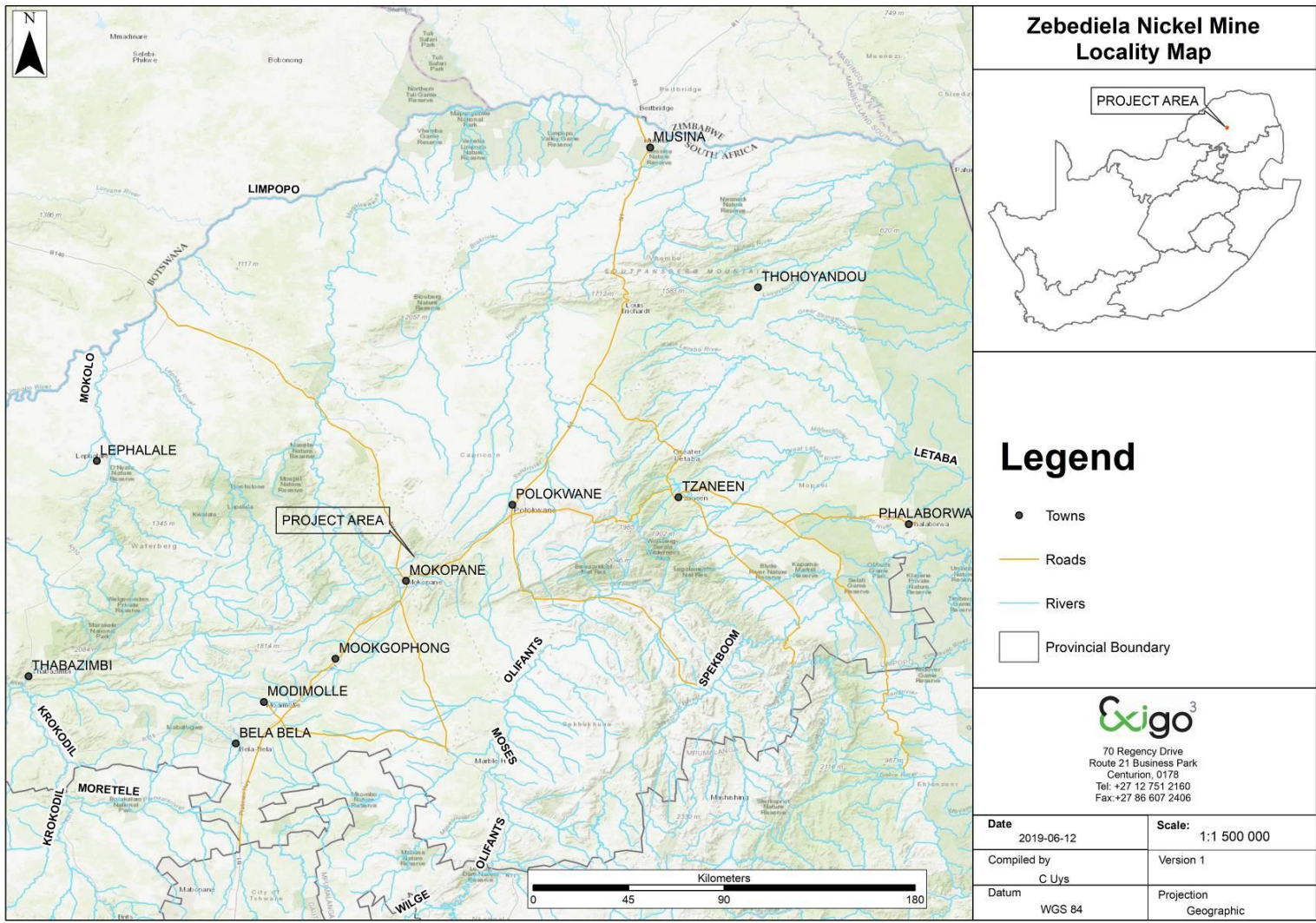


Figure 1: Regional Locality Map (Figuur 1: Streeksligging Kaart)

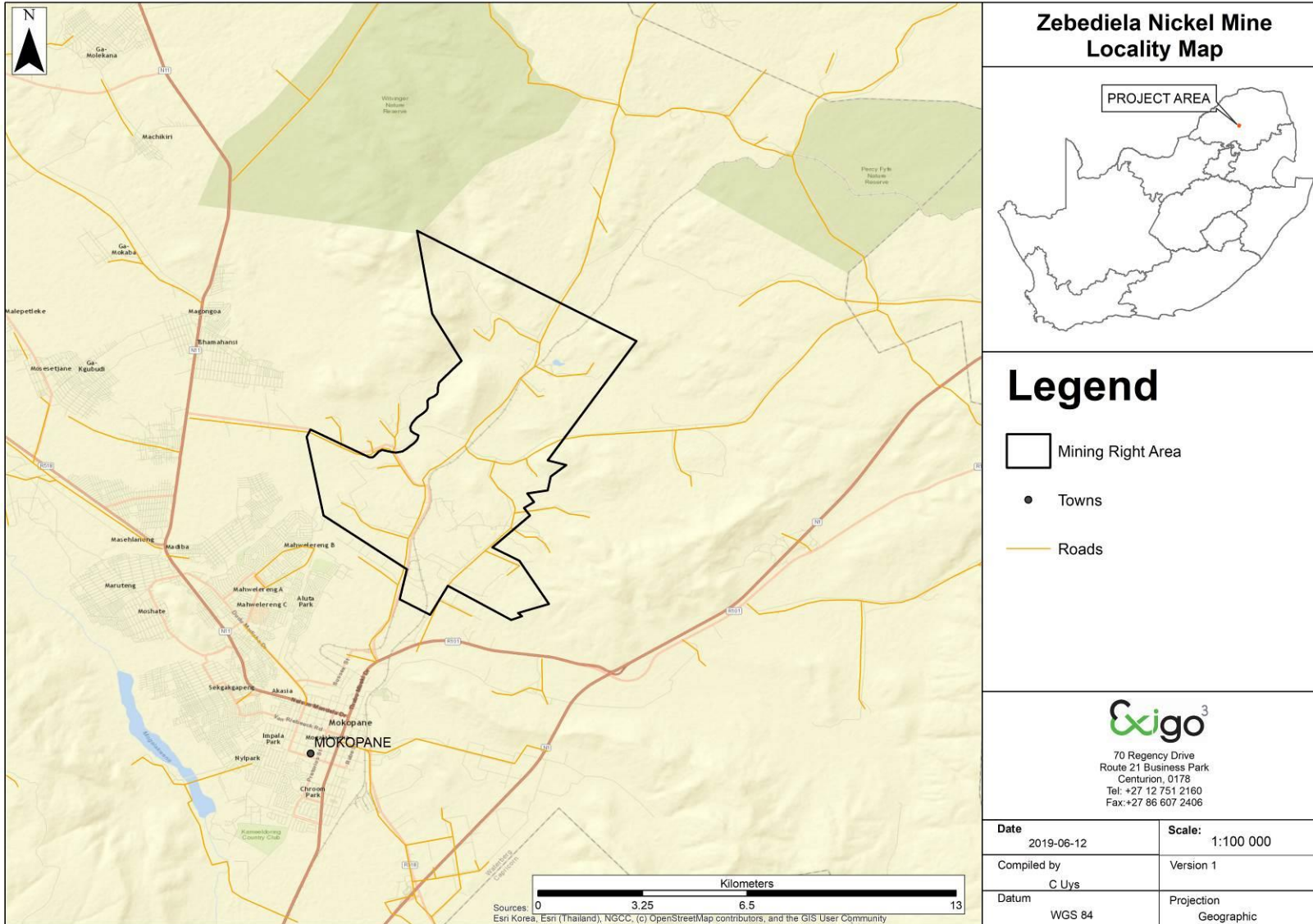


Figure 2: Locality Map of Mining Right Application Area (Figuur 2: Ligging Kaart van Mynregaanzoek area)