

31 October 2019

Dear Interested and/or Affected Party,

NOTIFICATION WITH REGARDS TO THE AVAILABILITY OF THE DRAFT SCOPING REPORT FOR THE PROPOSED ZEBEDIELA NICKEL MINE ON VARIOUS PORTIONS OF THE FARMS UITLOOP 3 KS, AMATAVA 41 KS, BLOEMHOF 4 KS, AND PIET POTGIETERSRUST TOWN AND TOWNLANDS 44 KS, IN THE MOGALAKWENA LOCAL AND WATERBERG DISTRICT MUNICIPALITIES OF THE LIMPOPO PROVINCE

Introduction

Lesego Platinum Uitloop (Pty) Ltd (LPU) intends to develop a nickel mining operation near Mokopane in the Limpopo Province of South Africa. LPU appointed Exigo Sustainability (Pty) Ltd as independent Environmental Assessment Practitioners to facilitate the Scoping and Environmental Impact Assessment (S&EIA) Process for the proposed Zebediela Nickel Mine development. The S&EIA Process will be undertaken in terms of the National Environmental Management Act (Act 107 of 1998) (NEMA), the National Environmental Management Waste Act (Act 59 of 2008) (NEM:WA), the Mineral and Petroleum Resources Development Act (Act 28 of 2002) (MPRDA) as well as the National Water Act (Act 36 of 1998) (NWA). Prior to the development of the project LPU will have to acquire the necessary mining right and environmental authorisation, and relevant licences and permits to commence with mining and related activities.

Proposed Mining Operations

The proposed mining operations constitute a nickel mining and beneficiation operation on various portions of farms as indicated above. The project falls under the jurisdiction of the Mogalakwena Local Municipality located within the Waterberg District Municipality. The site is located approximately 9 km north-east of the city centre of Mokopane and approximately 250 km north-northeast of Johannesburg. Figure 1 below indicates the location of the project site. The project area can be accessed from Johannesburg using the N1 highway to Mokopane and then utilizing the Percy Fyfe road to the project area. The proposed mining right area will be located on farms where LPU currently owns the three prospecting rights namely; Uitloop 3 KS (1,925,29 ha), Amatava 41 KS and Bloemhof 4 KS (2620,34 ha), and Piet Potgietersrust Town and Townlands 44 KS (115,6 ha). The Mining Right Area covers a combined area of roughly 4,660.90 ha, mine infrastructure is however only planned to be located on approximately 350 ha of the larger Mining Right Area (refer to Figure 2). The following coordinates serve as the centre point of the proposed open pit:

Latitude: 24°7'17.154"S; Longitude: 29°1'5.63"E

The proposed Zebediela Nickel Mine will predominantly mine nickel and possibly platinum group minerals (PGM's) and associated minerals (platinum, palladium, rhodium, gold, ruthenium, iridium, osmium, copper, cobalt and chromite), iron ore and vanadium from magnetite. The resource will be exploited by open pit mining methods. The top 40 m to 50 m of the disseminated sulphide material is oxidized (Oxide Zone) and will be stockpiled on an overburden facility. Concurrent backfilling will take place from year 10 once sufficient capacity exists in the open pit. The entire pit below the oxide zone is developed in mineralised material (Sulphide Zone) and ore would be trucked out and hauled to a processing plant. The open pit design has an approximate pit length of 1,150 m, with an average width on surface of 639 m and a depth of 220 m. A 5 m high and 10 m wide berm will be constructed around the entire pit perimeter. The mineral resources included in this project are extensive and as a result, the

mining right application will be for a 30 year life of mine (LOM). The first 5 years will be used for construction of the access roads, plant infrastructure, fencing and stripping of the open pit. The proposed project entails the construction of a processing plant and associated infrastructure, overburden facility, ore stockpiles, topsoil stockpile, Tailings Storage Facility (TSF), access and haul roads as well as pipelines.

Authorisations required

As part of the planning phase of the project, the following authorisations/licences/rights must be obtained from the relevant Government Departments:

1. **Environmental Authorisation (EA):** a Scoping and Environmental Impact Assessment (S&EIA) in terms of NEMA read with the EIA Regulations, 2014 (GNR 982 of 4 December 2014 as amended). The following activities listed in GNR 983, GNR 984 and GNR 985 of 4 December 2014 (as amended) are potentially applicable to the proposed project and require an environmental authorization *inter alia*: GNR 983: Activity 9, 10, 12, 13, 24, 25, and 56; GNR 984: Activity 4, 6, 15, 16, and 17; and GNR 985: Activity 4, 12, 14, and 18. The EA application subject to a S&EIA process was submitted to the Department Mineral Resources and Energy (DMRE): Limpopo Region.
2. **Waste Management Licence:** in terms of section 20 of the NEM:WA read with the GNR 982 of 4 December 2014 (as amended), for the undertaking of waste management activities listed in GNR 921 Category B, Activity 10 and 11 of 29 November 2013 (as amended). An integrated application in terms of the NEMA and NEM:WA was submitted to the DMRE.
3. **Mining Right:** a Mining Right Application (MRA) in terms of section 22 of the MPRDA was submitted to the DMRE.
4. **Water Use Licence (WUL):** the project will entail the undertaking of water uses as listed in section 21 of the NWA for 21(a), 21(b), 21(c), 21(g), 21(i) and 21(j) water uses *inter alia*. A WUL application in terms of section 40 and 41(4) of the NWA will be submitted to the Department of Water and Sanitation (DWS).

Available Reports for Review

The Draft Scoping Report (DSR) for the proposed project will be available for review by Interested and Affected Parties (I&AP's) as from **Thursday, 31 October 2019**. The DSR and all appendices will be available at dropbox link: https://www.dropbox.com/sh/3oud3fn226468z2/AAC062DzrHo4dTF_xYIJ6Xq9a?dl=0

Hard copies will also be made available at the following venues:

- Mogalakwena Public Library - 53 Van Riebeeck Street, Mokopane
- Mahwelereng Public Library -1830 Rufus Seakamela Street, Mahwelereng-A, Mokopane

If you are not able to access the reports or wish to receive the documents via another method please feel free to contact us in order for alternative arrangements to be made.

In order to ensure that you are registered as an I&AP, or if you require further information on any of the abovementioned applications and/or proposed project activities, please submit your name, contact information, interest and comments/relevant issues on the matter in writing on or before **Monday, 02 December 2019** to Exigo:

Ms C. Uys (Exigo Environmental Unit)

Tel: 012 751 2160

Fax: 086 607 2406

Mail: Postnet Suite 74, Private Bag X04, Menlo Park, 0102

Email: chantal@exigo3.com

If you have previously registered or commented on the proposed project your details have been captured on the I&AP register and will be utilized for further correspondence in this regard.

Public Open Day:

A public open day will be held on **Thursday, 14 November 2019** at the **Park Hotel in Mokopane** as follows:

Time slots:	Language:	Time slots:	Language:
09:00 to 10:00 am	Afrikaans	14:00 to 15:00 pm	Afrikaans
10:00 to 11:00 am	English	15:00 to 16:00 pm	English
11:00 am to 12:00 pm	Afrikaans	16:00 to 17:00 pm	Afrikaans
12:00 to 13:00 pm	English	17:00 to 18:00 pm	English

Interested and Affected Parties are welcome to attend the open day during any of the above specified timeslots.

Kind regards,

Chantal Uys (*sent electronically*)
Environmental Assessment Practitioner
Exigo Sustainability (Pty) Ltd

COMMENT SHEET

NOTIFICATION WITH REGARDS TO THE AVAILABILITY OF THE DRAFT SCOPING REPORT FOR THE PROPOSED ZEBEDIELA NICKEL MINE ON VARIOUS PORTIONS OF THE FARMS UITLOOP 3 KS, AMATAVA 41 KS, BLOEMHOF 4 KS, AND PIET POTGIETERSRUST TOWN AND TOWNLANDS 44 KS, IN THE MOGALAKWENA LOCAL AND WATERBERG DISTRICT MUNICIPALITIES OF THE LIMPOPO PROVINCE

Project Reference: LP30/5/1/2/3/2/1(10174)EM & LP30/5/1/2/2/10174MR

Title:		Tel number (Work):	
First Name:		Tel number (Cell):	
Surname:		Fax number (Work):	
Capacity/Interest		E-mail address:	
Postal/Residential Address			

Comments on the proposed development (YOU ARE WELCOME TO USE SEPARATE SHEETS)

1. Environmental Issues:	(such as water, ecology, pollution etc.)	2. Socio-economic Issues:	(such as job creation, safety and security)
3. Cultural / Historical Issues:	(such demolition of graves/old buildings.)	4. Any other Issues or Comments:	

Please return this comment sheet by 2 December 2019 via any of the following communication methods, attention to:

Ms Chantal Uys
Tel: 012 751 2160
Fax: 086 607 2406
Email: chantal@exigo3.com
Post: Postnet Suite 74, Private Bag X04, Menlo Park, 0102

31 October 2019

Geagte Geïnteresseerde en Geëffekteerde Party,

KENNISGEWING MET BETREKKING TOT DIE BESKIKBAARHEID VAN DIE KONSEP ONVANGBEPALINGSVERSLAG VIR KOMMENTAAR VIR DIE VOORGESTELDE ZEBEDIELA NIKKEL MYN OP VERSKEIE GEDEELTES VAN DIE PLASE UITLOOP 3 KS, AMATAVA 41KS, BLOEMHOF 4 KS, EN PIET POTGIETERSRUST TOWN AND TOWNLANDS 44 KS, IN DIE MOGALAKWENA PLAASLIKE EN WATERBERG DISTRIK MUNISIPALITEITE VAN DIE LIMPOPO PROVINSIE

Inleiding

Lesego Platinum Uitloop (Edms.) Bpk (LPU) beoog om 'n nikkel mynbou operasie naby Mokopane in die Limpopo Provinsie van Suid-Afrika te ontwikkel. LPU het Exigo Sustainability (Edms.) Bpk aangestel as onafhanklike omgewingsassesseringspraktisyne om die omvangsbepaling en omgewingsimpakstudie (Scoping & Environmental Impact Assessment - S&EIA) proses vir die voorgestelde ontwikkeling van die Zebediela Nikkelmyn te fasiliteer. Die S&EIA-proses sal onderneem word ingevolge die Wet op Nasionale Omgewingsbestuur (Wet 107 van 1998) (NEMA), die Nasionale Omgewingsbestuur: Afval Wet (Wet 59 van 2008) (NEM:WA), die Minerale en Petroleumhulpbronne Ontwikkelingswet (Wet 28 van 2002) (MPRDA) sowel as die Nasionale Waterwet (Wet 36 van 1998) (NWA). Voor die ontwikkeling van die projek sal LPU die nodige mynreg en omgewingsmagtiging moet verkry, en die toepaslike lisensies en permitte om met mynbou en verwante aktiwiteite te begin.

Voorgestelde Myn Ontwikkeling

Die voorgestelde mynbedrywighe is vir 'n nikkel myn en veredelingsaanleg op verskillende gedeeltes van plase soos hierbo aangedui. Die projek val onder die jurisdiksie van die Mogalakwena Plaaslike Munisipaliteit binne die Waterberg Distriksmunisipaliteit. Die perseel is ongeveer 9 km noordoos van die middestad van Mokopane en ongeveer 250 km noord-noordoos van Johannesburg geleë. Figuur 1 hieronder dui die ligging van die projekterrein aan. Toegang tot die projek area kan vanaf Johannesburg met die N1-snelweg na Mokopane verkry word en dan deur gebruik te maak van die Percy Fyfe-pad na die projekarea. Die voorgestelde mynregarea sal geleë wees op plase waar LPU tans drie prospekterregte besit, naamlik; Uitloop 3 KS (1 925.29 ha), Amatava 41 KS en Bloemhof 4 KS (2620.34 ha), en Piet Potgietersrust Town en Townlands 44 KS (115,267 ha). Die mynregarea beslaan 'n gesamentlike oppervlakte van ongeveer 4 660.90 ha, maar myn-infrastruktuur word egter beplan om op ongeveer 350 ha van die groter mynregarea geleë te wees (verwys na Figuur 2). Die volgende koördinate dien as die middelpunt van die voorgestelde oopgroef:

Breedtegraad: 24°7'17.154"S; Lengtegraad: 29°1'5.63"E

Die voorgestelde Zebediela-nikkelmyn sal hoofsaaklik nikkel en moontlik platinumgroepminerale (PGM's) en gepaardgaande minerale (platinum, palladium, rodium, goud, ruthenium, iridium, osmium, koper, kobalt en chromiet), ystererts en vanadium van magnetiet, myn. Die hulpbron sal ontgin word deur oopgroefmynmetodes. Die boonste 40 m tot 50 m van die verspreide sulfiedmateriaal is geoksideer (oksiedsone) en sal op 'n deklaag (overburden) fasiliteit gestoor word. Gelyktydige terugvulling van die deklaag sal vanaf jaar 10 plaasvind sodra voldoende kapasiteit in die oopgroef bestaan. Die hele put onder die oksiedsone bestaan uit gemineraliseerde materiaal (sulfiedsone) en erts sal na 'n-verwerkings-en veredelingsaanleg vervoer word. Die oopgroefput-ontwerp het 'n putlengte van ongeveer 1,150 m, 'n gemiddelde breedte op die oppervlakte van 639 m en 'n diepte van 220 m. 'n Wal van 5 m hoog en 10 m breed sal rondom die hele putonttrek gebou word. Die minerale hulpbronne wat by hierdie projek ingesluit is, is omvattend en gevolglik sal die mynregaansoek wees vir 'n 30-jaar leeftyd van myn (Life of Mine - LOM).

Die eerste vyf jaar sal konstruksie van die toegangspaaie, aanleg-infrastruktuur, omheining en stroping van die oopgroef behels. Myn infrastruktuur sal onder andere uit die volgende bestaan: verwerkings- en veredelingsaanleg en gepaardgaande infrastruktuur, deklaag en bogrond (overburden en topsoil) fasiliteite, erts-stoor fasiliteite, sliksdam (Tailings Storage Facility - TSF), toegangs- en vervoerpaaie, asook pyplyne.

Goedkeurings wat benodig word

As deel van die impak beplanningsfase van die projek, moet die volgende magtigings/lisensies/regte verkry word van die betrokke staatsdepartemente:

1. **Omgewingsmagtiging (Environmental Authorisation - EA):** 'n Omvangsbepaling en Omgewingsimpakstudie (Scoping and Environmental Impact Assessment - S&EIA) in terme van die NEMA, gelees met die 2014 EIA Regulasies (GNR 982 van 4 Desember 2014 soos gewysig). Die volgende gelyste aktiwiteite in GNR 983, GNR 984 en GNR 985 van 4 Desember 2014 (soos gewysig) is van toepassing op die voorgestelde projek en vereis omgewingsmagtiging *inter alia*: GNR 983: Aktiwiteit 9, 10, 12, 13, 24, 25, en 56; GNR 984: Aktiwiteit 4, 6, 15, 16, en 17; en GNR 985: Aktiwiteit 4, 12, 14, en 18. Die omgewingsmagtigingsaansoek onderhewig aan 'n S&EIA proses is voorgelê vir goedkeuring aan die Departement van Minerale Hulpbronne & Energie (Department of Mineral Resources & Energy - DMRE): Limpopo Streek.
2. **Afvalbestuurslisensie:** in terme van artikel 20 van die NEM:WA, saamgelees met GNR 982 van 4 Desember 2014 (soos gewysig) vir die onderneming van afvalbestuursaktiwiteite gelys in GNR 921, Kategorie B, Aktiwiteit 10 en 11 van 29 November 2013 (soos gewysig). 'n Geïntegreerde aansoek in terme van die NEMA en NEM:WA is aan die DMRE voorgelê.
3. **Mynreg:** 'n mynreg aansoek ingevolge artikel 22 van die MPRDA is aan die DMRE voorgelê.
4. **Watergebruikslisensie:** die projek sal die onderneming van watergebruike behels soos gelys in artikel 21 van die NWA vir 21(a), 21(b), 21(c), 21 (g), 21(i) en 21(j) watergebruike *inter alia*. 'n Watergebruikslisensie (Water Use Licence – WUL) aansoek in terme van artikel 40 en 41(4) van die NWA sal by die Departement van Water en Sanitasie (DWS) ingedien word.

Verslae Beskikbaar vir Kommentaar

Die Konsep Omvangbepalingsverslag (Scoping Report) vir die voorgestelde projek sal beskikbaar gemaak word vir besigtiging aan Geïntereerde en Geaffekteerde Partye (I&APs) vir kommentaar, vanaf Donderdag, 31 Oktober 2019. Die Konsep Omvangbepalingsverslag en alle bylae sal beskikbaar wees op die Dropbox webtuiste skakel: https://www.dropbox.com/sh/3oud3fn226468z2/AAC062DzrHo4dTF_xYIJ6Xq9a?dl=0

Harde kopieë sal ook beskikbaar wees by die volgende persele:

- Mogalakwena Publieke Biblioteek - 53 Van Riebeeck Straat, Mokopane
- Mahwelereng Publieke Biblioteek - 1830 Rufus Seakamela Straat, Mahwelereng-A, Mokopane

Indien u nie in staat is om toegang te verkry tot die verslae nie of die dokumente wil ontvang via 'n ander metode, voel asseblief vry om ons te kontak sodat alternatiewe reëlings getref kan word.

Ten einde te verseker dat u as 'n I&AP geregistreer word of indien u meer inligting oor enige van die bogenoemde aansoeke en/of voorgestelde projek aktiwiteite vereis, verstrek asseblief u naam, kontakbesonderhede, belangstelling en kommentaar/relevante kwessies op die saak skriftelik voor of teen **Maandag, 02 Desember 2019** aan Exigo:

Me C. Uys (Exigo Omgewingseenheid)

Tel: 012 751 2160

Faks: 086 607 2406

Pos: Postnet Suite 74, Privaatsak X04, Menlo Park, 0102

Epos: chantal@exigo3.com

Indien u voorheen geregistreer het op die beoogde projek is u besonderhede reeds in ons belanghebbende party register opgeneem en sal dit in die toekoms gebruik word vir verdere korrespondensie in hierdie verband.

Publieke Ope Dag:

'n Publieke ope dag sal gehou word op **Donderdag, 14 November 2019**, by die **Park Hotel in Mokopane** soos volg:

Tydgleuwe:	Taal:	Tydgleuwe:	Taal:
09:00 to 10:00 vm	Afrikaans	14:00 to 15:00 nm	Afrikaans
10:00 to 11:00 vm	Engels	15:00 to 16:00 nm	Engels
11:00 vm to 12:00 nm	Afrikaans	16:00 to 17:00 nm	Afrikaans
12:00 to 13:00 nm	Engels	17:00 to 18:00 nm	Engels

Geïntereeerde en Geaffekteerde Partye is welkom om die ope dag gedurende enige van die gespesifiseerde tydgleuwe by te woon. .

Groete,

Chantal Uys (*elektronies gestuur*)
 Omgewingsassesseringspraktisyn
 Exigo Sustainability (Pty) Ltd

KOMMENTAAR BLAD

KENNISGEWING MET BETREKKING TOT DIE BESKIKBAARHEID VAN DIE KONSEP ONVANGBEPALINGSVERSLAG VIR KOMMENTAAR VIR DIE VOORGESTELDE ZEBEDIELA NIKKEL MYN OP VERSKEIE GEDEELTES VAN DIE PLASE UITLOOP 3 KS, AMATAVA 41KS, BLOEMHOF 4 KS, EN PIET POTGIETERSRUST TOWN AND TOWNLANDS 44 KS, IN DIE MOGALAKWENA PLAASLIKE EN WATERBERG DISTRIK MUNISIPALITEITE VAN DIE LIMPOPO PROVINSIE
Projek Verwysing: LP30/5/1/2/3/2/1(10174)EM & LP30/5/1/2/2/10174MR

Titel:		Tel nommer (Werk):	
Naam:		Tel nommer (Sel):	
Van:		Faks nommer (Werk):	
Hoedanigheid/Belangstelling		E-pos adres:	
Pos/Residensiële Adres			

Kommentaar op die voorgestelde ontwikkeling (U IS WELKOM OM ADDISIONELE BLADSYE TE GEBRUIK)

5. Omgewingskwessies:	(soos water, ekologie, besoedeling ens.)	6. Sosio-ekonomiese kwessies:	(soos werkskepping, veiligheid en sekuriteit)
7. Kulturele / Historiese kwessies:	(soos slooping van grafte/ou geboue.)	Enige ander kwessies of kommentaar:	

Stuur asseblief hierdie registrasie vorm teen nie later as 2 Desember 2019 deur middel van enige van die volgende metodes van kommunikasie, vir aandag aan:

Me C Uys
Tel: 012 751 2160
Faks: 086 607 2406
Epos: chantal@exigo3.com
Pos: Postnet Suite 74, Privaatsak X04, Menlo Park, 0102

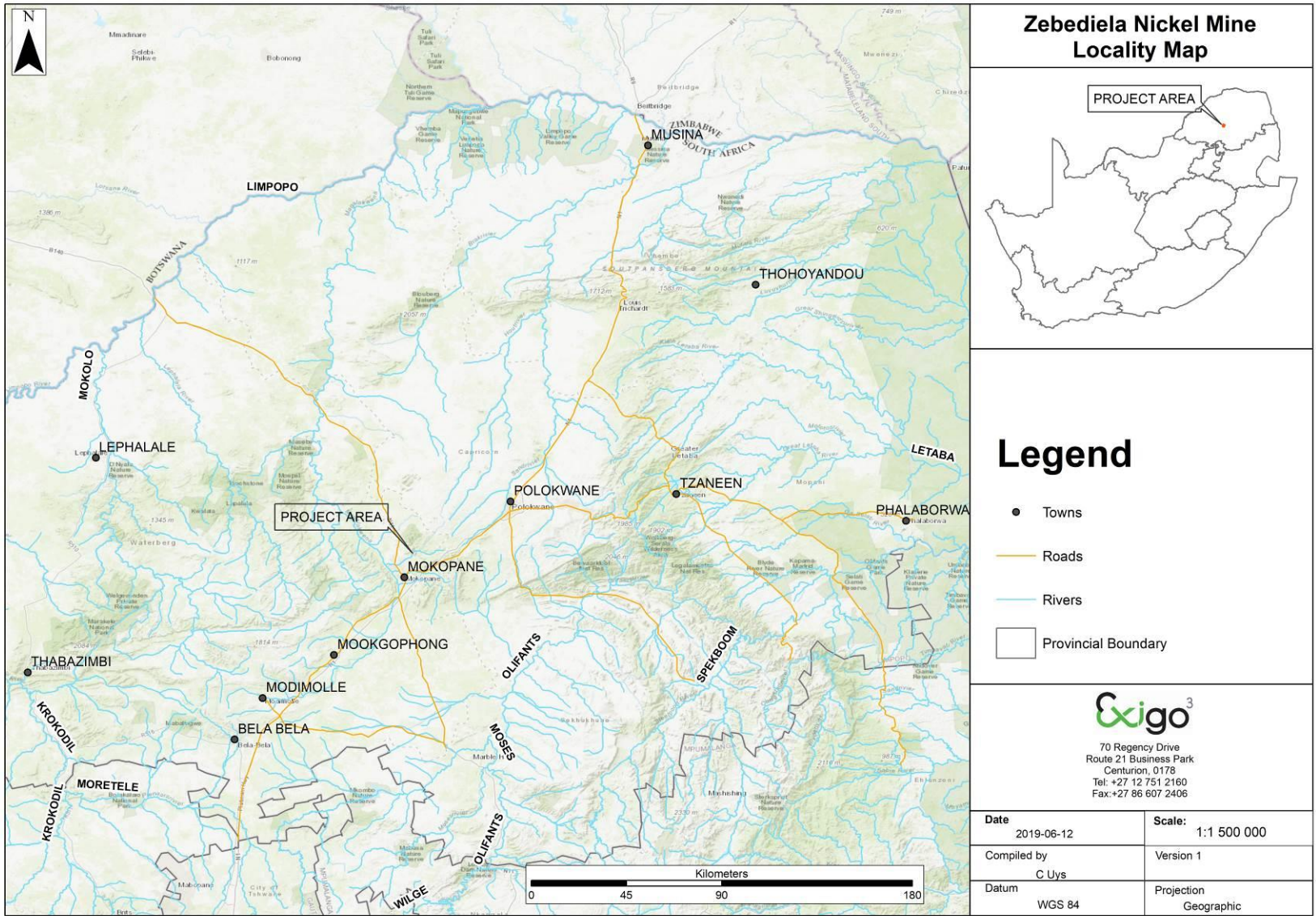


Figure 1: Regional Locality Map (Figuur 1: Streksligging Kaart)

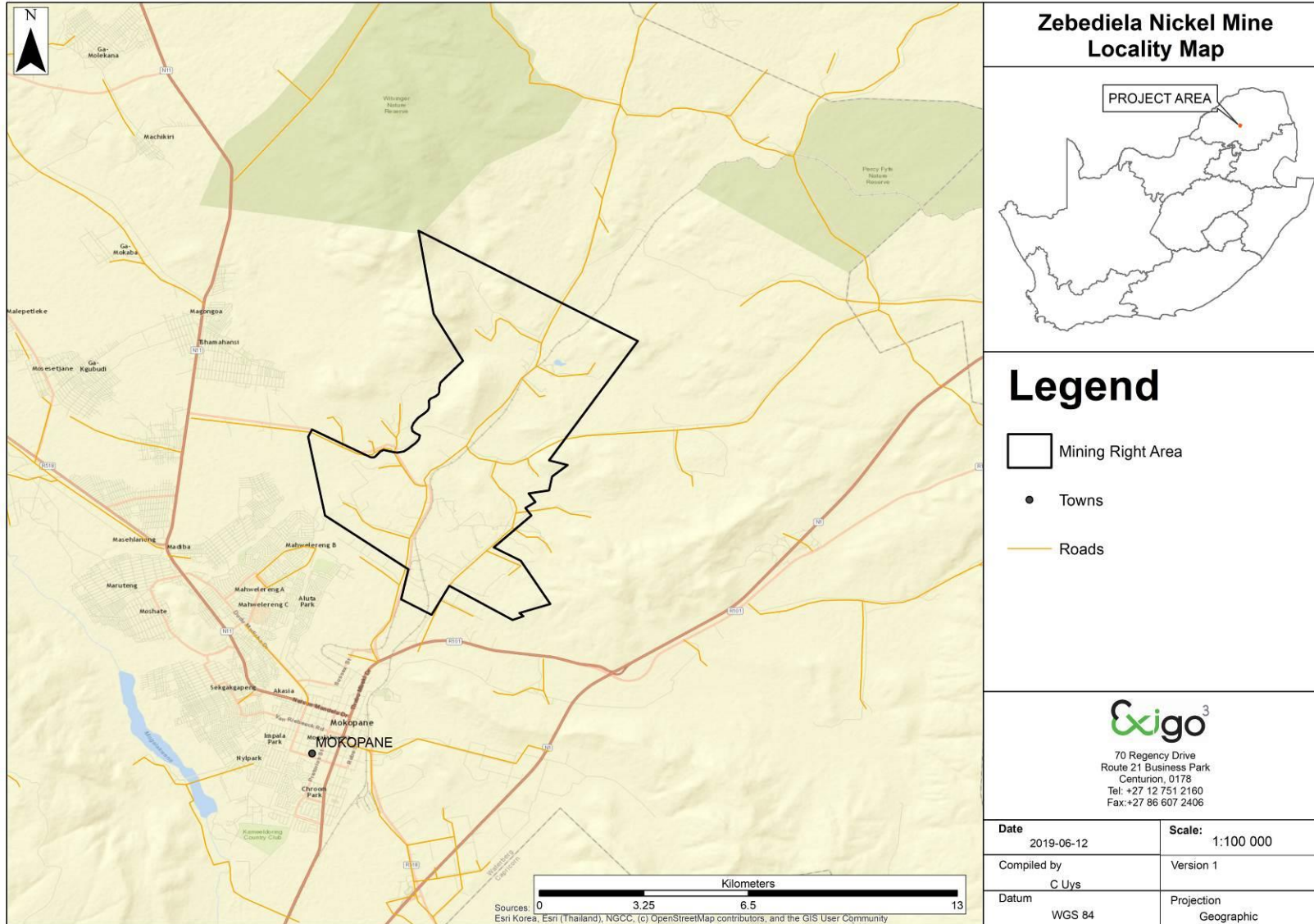


Figure 2: Locality Map of Mining Right Application Area (Figuur 2: Ligging Kaart van Mynregansoek area)

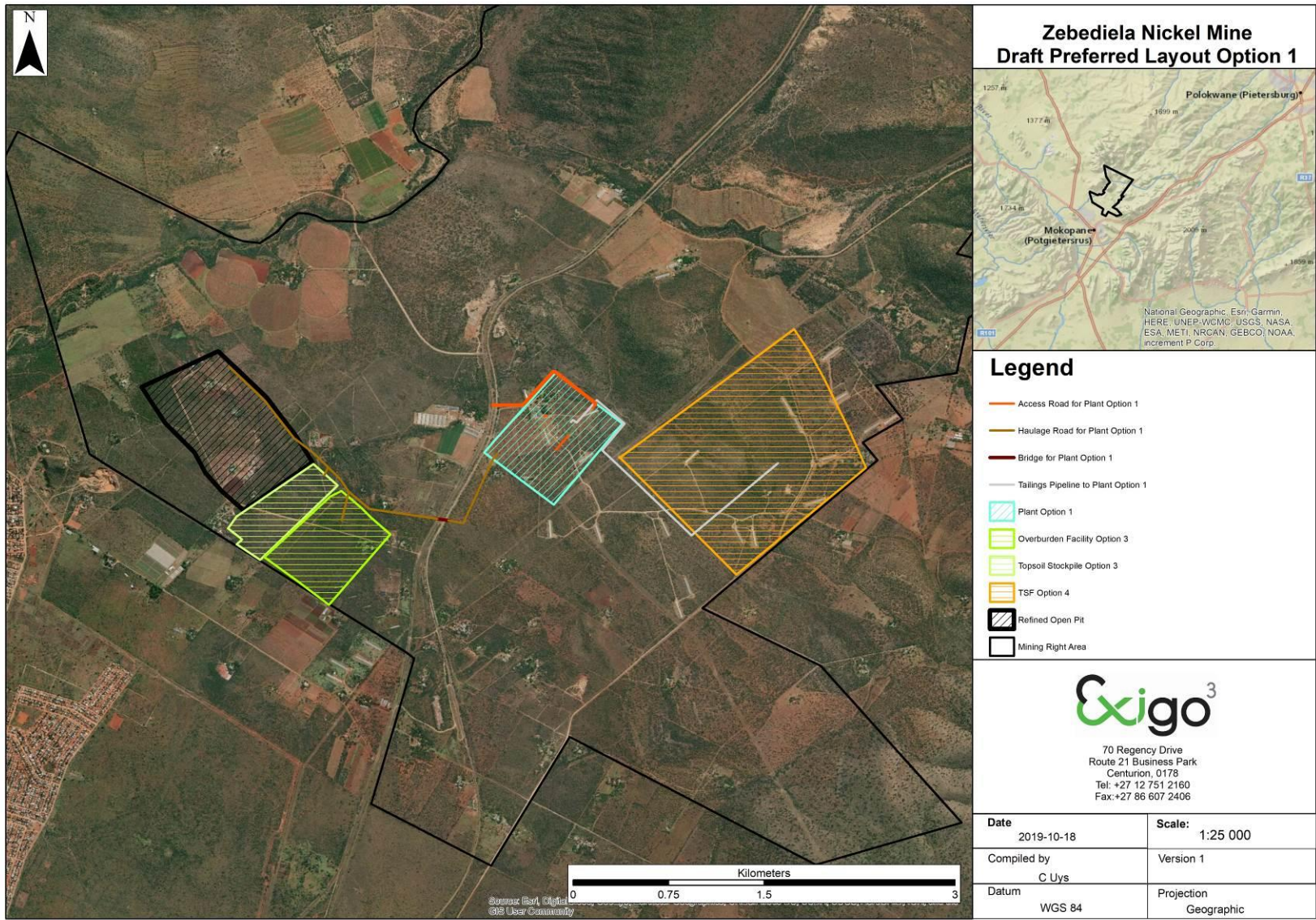


Figure 3: Draft Layout Option 1 (Figuur 3: Konsep Uitleg Opsie 1)

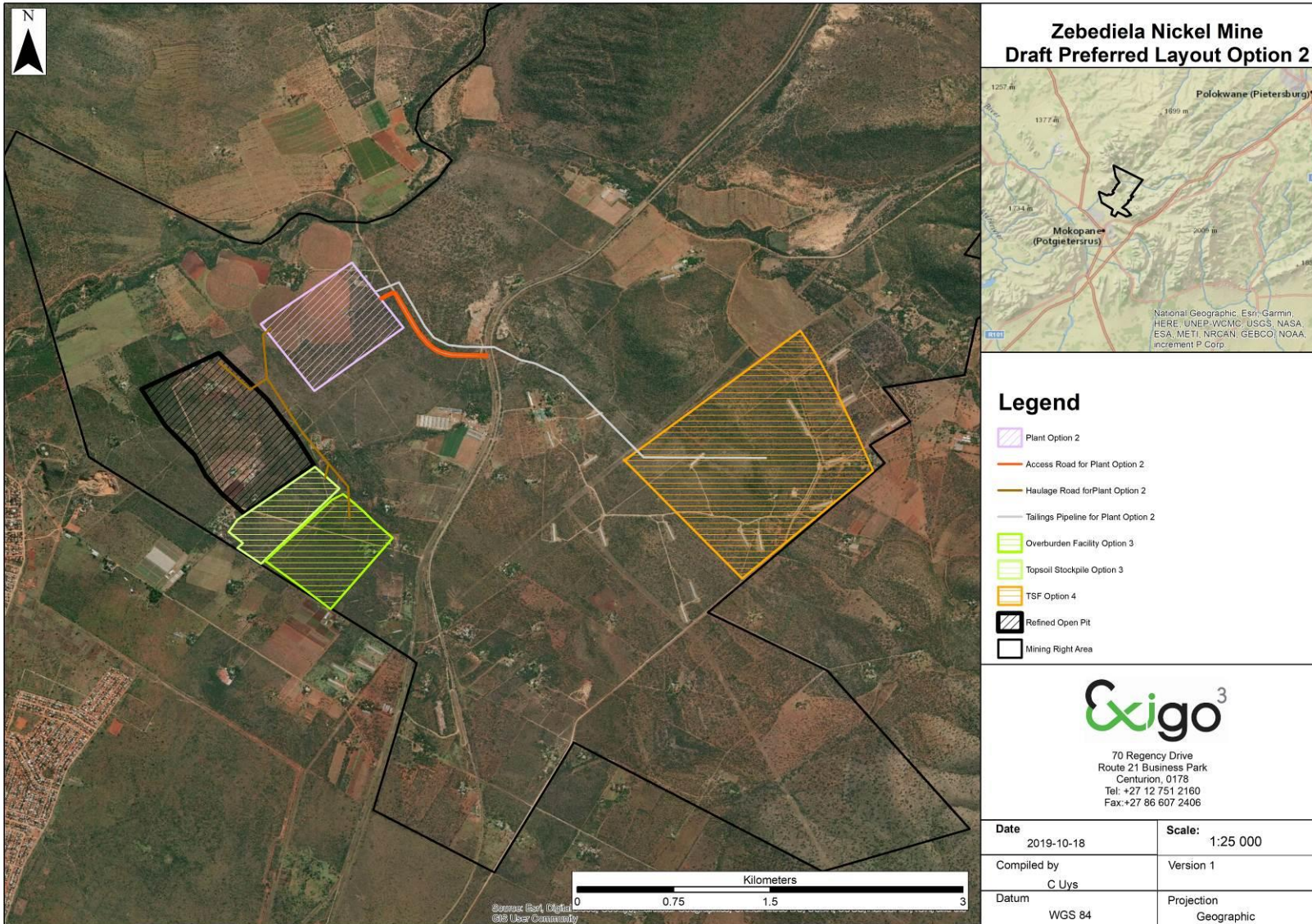


Figure 4: Draft Layout Option 2 (Figuur 4: Konsep Uitleg Opsie 2)