

18 November 2020

Dear Interested and/or Affected Party,

**NOTIFICATION WITH REGARDS TO THE AVAILABILITY OF THE DRAFT ENVIRONMENTAL IMPACT ASSESSMENT AND ENVIRONMENTAL MANAGEMENT PROGRAMME REPORT (EIA&EMPR) FOR THE PROPOSED ZEBEDIELA NICKEL MINE ON VARIOUS PORTIONS OF THE FARMS UITLOOP 3 KS, BLOEMHOF 4 KS, AMATAVA 41 KS & PIET POTGIERSRUST TOWN AND TOWNLANDS 44KS, IN THE MOGALAKWENA LOCAL AND WATERBERG DISTRICT MUNICIPALITIES OF THE LIMPOPO PROVINCE**

**Introduction**

Lesego Platinum Uitloop (Pty) Ltd (LPU) intends to develop a nickel mining operation near Mokopane in the Limpopo Province of South Africa. LPU appointed Exigo Sustainability (Pty) Ltd as independent Environmental Assessment Practitioners to facilitate the Scoping and Environmental Impact Assessment (S&EIA) Process for the proposed Zebediela Nickel Mine development. The S&EIA Process will be undertaken in terms of the National Environmental Management Act (Act 107 of 1998) (NEMA), the National Environmental Management Waste Act (Act 59 of 2008) (NEM:WA), the Mineral and Petroleum Resources Development Act (Act 28 of 2002) (MPRDA) as well as the National Water Act (Act 36 of 1998) (NWA). Prior to the development of the project LPU will have to acquire the necessary mining right and environmental authorisation, and relevant licences and permits to commence with mining and related activities.

**Proposed Mining Operations**

The proposed mining operations constitute a nickel mining and beneficiation operation on various portions of farms as indicated above. The project falls under the jurisdiction of the Mogalakwena Local Municipality located within the Waterberg District Municipality. The site is located approximately 9 km north-east of the city centre of Mokopane and approximately 250 km north-northeast of Johannesburg. Figure 1 below indicates the location of the project site. The project area can be accessed from Johannesburg using the N1 highway to Mokopane and then utilizing the Percy Fyfe road to the project area. The proposed mining right area will be located on farms where LPU currently owns the three prospecting rights namely; Uitloop 3 KS (1,925,29 ha), Amatava 41 KS and Bloemhof 4 KS (2620,34 ha), and Piet Potgietersrust Town and Townlands 44 KS (115,6 ha). The Mining Right Area covers a combined area of roughly 4,660.90 ha, mine infrastructure is however only planned to be located on approximately 150 ha of the larger Mining Right Area (refer to Figure 2). The following coordinates serve as the centre point of the proposed open pit:

**Latitude: 24°7'17.154"S; Longitude: 29°1'5.63"E**

The proposed Zebediela Nickel Mine will predominantly mine nickel and possibly platinum group minerals (PGM's) and associated minerals (platinum, palladium, rhodium, gold, ruthenium, iridium, osmium, copper, cobalt and chromite), iron ore and vanadium from magnetite. The resource will be exploited by open pit mining methods. The top 40 m to 50 m of the disseminated sulphide material is oxidized (Oxide Zone) and will be stockpiled on an overburden facility. Concurrent backfilling will take place from year 10 once sufficient capacity exists in the open pit. The entire pit below the oxide zone is developed in mineralised material (Sulphide Zone) and ore would be trucked out and hauled to the processing plant of a nearby mine, between 7 and 25 km north-west of the open pit. The open pit design on surface has an approximate pit length of 800 m, with an average width of 500 m and a depth of

90 m. A 5 m high and 10 m wide berm will be constructed around the entire pit perimeter. The mineral resources included in this project are extensive and as a result, the mining right application will be for a 30 year life of mine (LOM). The first 2 years will be used for construction of the access roads, plant infrastructure, fencing, stripping of the open pit and RoM stockpiling starting in year 1 with 100 000 tons per month. Envisaged infrastructure will comprise of the following:

- Primary and secondary crushing and screening plant
- Ore handling and storage facilities (RoM stockpiles)
- Administration building, security building, change house, messing and canteen facilities, mining and geology offices, maintenance and engineering workshops and offices, warehouse and offices, medical station, fire station, laboratory and satellite ablutions
- Potable water tank and reticulation
- Raw Water Dam
- Sewage reticulation
- Electricity distribution facilities (overhead powerlines, transformers and mini substations)
- Hydrocarbon storage facilities
- Waste water treatment works;
- Water treatment plant;
- Pollution Control Dams (PCDs);
- Haul and access roads;
- Perimeter and internal fencing;
- Overburden and topsoil storage facilities;
- Explosives Store

### **Authorisations required**

As part of the planning phase of the project, the following authorisations/licences/rights must be obtained from the relevant Government Departments:

1. **Environmental Authorisation (EA):** a Scoping and Environmental Impact Assessment (S&EIA) in terms of NEMA read with the EIA Regulations, 2014 (GNR 982 of 4 December 2014 as amended). The following activities listed in GNR 983, GNR 984 and GNR 985 of 4 December 2014 (as amended) are potentially applicable to the proposed project and require an environmental authorization *inter alia*: GNR 983: Activity 9, 10, 13, 24, 25, and 56; GNR 984: Activity 4, 6, 15, and 17; and GNR 985: Activity 4, 12, 14, and 18. The EA application subject to a S&EIA process was submitted to the Department Mineral Resources and Energy (DMRE): Limpopo Region.
2. **Waste Management Licence:** in terms of section 20 of the NEM:WA read with the GNR 982 of 4 December 2014 (as amended), for the undertaking of waste management activities listed in GNR 921 Category B, Activity 10 and 11 of 29 November 2013 (as amended). An integrated application in terms of the NEMA and NEM:WA was submitted to the DMRE.
3. **Mining Right:** a Mining Right Application (MRA) in terms of section 22 of the MPRDA was submitted to the DMRE.
4. **Water Use Licence (WUL):** the project will entail the undertaking of water uses as listed in section 21 of the NWA for 21(a), 21(b), 21(c), 21(g), 21(i) and 21(j) water uses *inter alia*. A WUL application in terms of section 40 and 41(4) of the NWA will be submitted to the Department of Water and Sanitation (DWS).

### **Reports Available for Review**

The Draft Environmental Impact Assessment and Environmental Management Programme Report (EIA&EMPR) for the proposed project will be made available for review to Interested and Affected Parties (I&APs) for comment. The

Draft EIA&EMPR and all its appendices will be available on the Dropbox website as from **Wednesday, 18 November 2020**. Dropbox website link:

<https://www.dropbox.com/sh/9c4d2jdd158iyI5/AACEFvjXdWuMa-cJf1fBZbPca?dl=0>

A hard copy of the Draft EIA&EMPR will also be made available at the Mogalakwena Local Municipality in Mokopane (54 Retief Street, Mokopane).

If you are unable to access the reports or wish to receive the documents via another method, please feel free to contact us in order for alternative arrangements to be made.

Please provide comments on the reports by submitting your name, contact information, interest and comments/relevant issues on the matter in writing on or before **Friday, 08 January 2021** to Exigo (details below):

**Ms C. Uys** (Exigo Environmental Unit)

Tel: 012 751 2160

Fax: 086 607 2406

Mail: Postnet Suite 74, Private Bag X04, Menlo Park, 0102

Email: [chantal@exigo3.com](mailto:chantal@exigo3.com)

#### **Public Meeting:**

A public meeting will be held on **Thursday, 3 December 2020** from **16:00 to 19:00** at the **Oasis Hotel (1 Thabo Mbeki Drive, Mokopane)**. Interested and Affected Parties are welcome to attend the public meeting on the aforesaid date and time.

The public meeting presentation with the key EIA findings will be made available for those I&AP's who wish to watch the presentation online instead of attending the public meeting. The public meeting presentation will be made available on the above Dropbox website link on 3 December 2020.

#### **Online Q&A Session:**

In addition, an online question and answer (Q&A) session will be held on the Zoom platform on **7 December 2020** at the following timeslots:

- 09:00 to 10:30 am
- 15:30 to 17:00 pm

Kindly register before the 7<sup>th</sup> of December 2020 for a specific timeslot, in order to receive the relevant Zoom meeting details.

Kind regards,

**Chantal Uys** (*sent electronically*)

Environmental Assessment Practitioner

Exigo Sustainability (Pty) Ltd

**COMMENT SHEET**

**NOTIFICATION WITH REGARDS TO THE AVAILABILITY OF THE DRAFT ENVIRONMENTAL IMPACT ASSESSMENT AND ENVIRONMENTAL MANAGEMENT PROGRAMME REPORT (EIA&EMPR) FOR THE PROPOSED ZEBEDIELA NICKEL MINE ON VARIOUS PORTIONS OF THE FARMS UITLOOP 3 KS, BLOEMHOF 4 KS, AMATAVA 41 KS & PIET POTGIERSRUST TOWN AND TOWNLANDS 44KS, IN THE MOGALAKWENA LOCAL AND WATERBERG DISTRICT MUNICIPALITIES OF THE LIMPOPO PROVINCE**

**Project Reference: LP30/5/1/2/3/2/1(10174)EM & LP30/5/1/2/2/10174MR**

Title:		Tel number (Work):	
First Name:		Tel number (Cell):	
Surname:		Fax number (Work):	
Capacity/Interest		E-mail address:	

Postal/Residential Address			

**Comments on the proposed development (YOU ARE WELCOME TO USE SEPARATE SHEETS)**

<b>1. Environmental Issues:</b>	(such as water, ecology, pollution etc.)	<b>2. Socio-economic Issues:</b>	(such as job creation, safety and security)
<b>3. Cultural / Historical Issues:</b>	(such demolition of graves/old buildings.)	<b>4. Any other Issues or Comments:</b>	

**Please return this comment sheet by Friday, 08 January 2021 via any of the following communication methods, attention to:**

**Ms Chantal Uys**  
**Tel:** 012 751 2160  
**Fax:** 086 607 2406  
**Email:** [chantal@exigo3.com](mailto:chantal@exigo3.com)  
**Post:** Postnet Suite 74, Private Bag X04, Menlo Park, 0102

18 November 2020

Geagte Geïnteresseerde en Geaffekteerde Party,

**KENNISGEWING MET BETREKKING TOT DIE BESIKBAARHEID VAN DIE KONSEP  
OMGEWINGSIMPAKSTUDIE EN OMGEWINGSBESTUURSPLAN (EIA&EMPR) VIR KOMMENTAAR VIR DIE  
VOORGESTELDE ZEBEDIELA NIKKEL MYN OP VERSKEIE GEDEELTES VAN DIE PLASE UITLOOP 3 KS,  
BLOEMHOF 4 KS, AMATAVA 41 KS & PIET POTGIERSRUST TOWN AND TOWNLANDS 44KS, IN DIE  
MOGALAKWENA PLAASLIKE EN WATERBERG DISTRIK MUNISIPALITEITE VAN DIE LIMPOPO PROVINSIE**

**Inleiding**

Lesego Platinum Uitloop (Edms.) Bpk (LPU) beoog om 'n nikkel mynbou operasie naby Mokopane in die Limpopo Provinsie van Suid-Afrika te ontwikkel. LPU het Exigo Sustainability (Edms.) Bpk aangestel as onafhanklike omgewingsassesseringspraktisyne om die omvangsbepaling en omgewingsimpakstudie (Scoping & Environmental Impact Assessment - S&EIA) proses vir die voorgestelde ontwikkeling van die Zebediela Nikkelmyn te fasiliteer. Die S&EIA-proses sal onderneem word ingevolge die Wet op Nasionale Omgewingsbestuur (Wet 107 van 1998) (NEMA), die Nasionale Omgewingsbestuur: Afval Wet (Wet 59 van 2008) (NEM:WA), die Minerale en Petroleumhulpbronne Ontwikkelingswet (Wet 28 van 2002) (MPRDA) sowel as die Nasionale Waterwet (Wet 36 van 1998) (NWA). Voor die ontwikkeling van die projek sal LPU die nodige mynreg en omgewingsmagtiging moet verkry, en die toepaslike lisensies en permitte om met mynbou en verwante aktiwiteite te begin.

**Voorgestelde Myn Ontwikkeling**

Die voorgestelde mynbedrywighede is vir 'n nikkel myn en veredelingsaanleg op verskillende gedeeltes van plase soos hierbo aangedui. Die projek val onder die jurisdiksie van die Mogalakwena Plaaslike Munisipaliteit binne die Waterberg Distriksmunisipaliteit. Die perseel is ongeveer 9 km noordoos van die middestad van Mokopane en ongeveer 250 km noord-noordoos van Johannesburg geleë. Figuur 1 hieronder dui die ligging van die projekterrein aan. Toegang tot die projek area kan vanaf Johannesburg met die N1-snelweg na Mokopane verkry word en dan deur gebruik te maak van die Percy Fyfe-pad na die projekarea. Die voorgestelde mynregarea sal geleë wees op plase waar LPU tans drie prospekterregte besit, naamlik; Uitloop 3 KS (1 925.29 ha), Amatava 41 KS en Bloemhof 4 KS (2620.34 ha), en Piet Potgietersrust Town en Townlands 44 KS (115,267 ha). Die mynregarea beslaan 'n gesamentlike oppervlakte van ongeveer 4 660.90 ha, maar myn-infrastruktuur word egter beplan om op ongeveer 150 ha van die groter mynregarea geleë te wees (verwys na Figuur 2). Die volgende koördinate dien as die middelpunt van die voorgestelde oopgroef:

**Breedtegraad: 24°7'17.154"S; Lengtegraad: 29°1'5.63"E**

Die voorgestelde Zebediela-nikkelmyn sal hoofsaaklik nikkel en moontlik platinumgroepminerale (PGM's) en gepaardgaande minerale (platinum, palladium, rodium, goud, ruthenium, iridium, osmium, koper, kobalt en chromiet), ystererts en vanadium van magnetiet, myn. Die hulpbron sal ontgin word deur oopgroefmynmetodes. Die boonste 40 m tot 50 m van die verspreide sulfiedmateriaal is geoksideer (oksiedsone) en sal op 'n deklaag (overburden) fasiliteit gestoor word. Gelyktydige terugvulling van die deklaag sal vanaf jaar 10 plaasvind sodra voldoende kapasiteit in die oopgroef bestaan. Die hele put onder die oksiedsone bestaan uit gemeneraliseerde materiaal (sulfiedsone) en erts sal na 'n-verwerkings-en veredelingsaanleg vervoer word. Die oopgroefput-ontwerp het 'n putlengte van ongeveer 800 m, 'n gemiddelde breedte op die oppervlakte van 500 m en 'n diepte van 90 m. 'n Wal van 5 m hoog en 10 m breed sal rondom die hele putomtrek gebou word. Die minerale hulpbronne wat by hierdie projek ingesluit is, is omvattend en gevolglik sal die mynregaansoek wees vir 'n 30-jaar leeftyd van myn (Life of Mine - LOM). Die eerste 2 jaar sal konstruksie van die toegangspaaie, aanleg-infrastruktuur, omheining, stroping van die oopgroef en RoM opberging van 100 000 ton per maand behels. Myn infrastruktuur sal onder andere uit die volgende bestaan:

- Verwerkingsaanleg

- Erts-hanteringstoor fasiliteite (ROM-voorraad)
- Administratiewe gebou, sekuriteitsgebou, ablusieblok, rus- en kantienfasiliteite, mynbou- en geologie-kantore, instandhoudings- en ingenieurswerkswinkels met kantore, pakhuis met gepaardgaande kantore, mediese stasie, brandweerstasie, laboratorium- en verplaasbare ablusies
- Drinkwater tenk en netwerk
- Proses (rou) water dam
- Elektrisiteit verspreidingsfasiliteite (hoofkraglyne, transformators en mini-substasies)
- Brandstof -stoorfasiliteite
- Rioolbehandelingsaanleg en pyplyne vir rioolwater
- Waterbehandelingsaanleg
- Besoedelingsbeheerdamme (Pollution Control Dams - PCDs)
- Vervoer- en toegangspaaie
- Omheining en interne heiningdraad
- Bogrond (topsoil) en deklaag (overburden) fasiliteite
- Plofstofstoor

### Goedkeurings wat benodig word

As deel van die impak beplanningfase van die projek, moet die volgende magtigings/lisensies/regte verkry word van die betrokke staatsdepartemente:

1. **Omgewingsmagtiging (Environmental Authorisation - EA):** 'n Omvangsbepaling en Omgewingsimpakstudie (Scoping and Environmental Impact Assessment - S&EIA) in terme van die NEMA, gelees met die 2014 EIA Regulasies (GNR 982 van 4 Desember 2014 soos gewysig). Die volgende gelyste aktiwiteite in GNR 983, GNR 984 en GNR 985 van 4 Desember 2014 (soos gewysig) is van toepassing op die voorgestelde projek en vereis omgewingsmagtiging *inter alia*: GNR 983: Aktiwiteit 9, 10, 13, 24, 25, en 56; GNR 984: Aktiwiteit 4, 6, 15, en 17; en GNR 985: Aktiwiteit 4, 12, 14, en 18. Die omgewingsmagtigingsaansoek onderhewig aan 'n S&EIA proses is voorgelê vir goedkeuring aan die Departement van Minerale Hulpbronne & Energie (Department of Mineral Resources & Energy - DMRE): Limpopo Streek.
2. **Afvalbestuurslisensie:** in terme van artikel 20 van die NEM:WA, saamgelees met GNR 982 van 4 Desember 2014 (soos gewysig) vir die onderneming van afvalbestuursaktiwiteite gelys in GNR 921, Kategorie B, Aktiwiteit 10 en 11 van 29 November 2013 (soos gewysig). 'n Geïntegreerde aansoek in terme van die NEMA en NEM:WA is aan die DMRE voorgelê.
3. **Mynreg:** 'n mynreg aansoek ingevolge artikel 22 van die MPRDA is aan die DMRE voorgelê.
4. **Watergebruikslisensie:** die projek sal die onderneming van watergebruike behels soos gelys in artikel 21 van die NWA vir 21(a), 21(b), 21(c), 21 (g), 21(i) en 21(j) watergebruike *inter alia*. 'n Watergebruikslisensie (Water Use Licence – WUL) aansoek in terme van artikel 40 en 41(4) van die NWA sal by die Departement van Water en Sanitasie (DWS) ingedien word.

### Verslae Beskikbaar vir Kommentaar

Die Konsep Omgewingsimpakstudie en Omgewingsbestuursplan (EIA&EMPR) vir die voorgestelde projek sal beskikbaar gemaak word vir besigtiging aan Geïntereerde en Geaffekteerde Partye (I&APs) vir kommentaar,

vanaf **Woensdag, 18 November 2020**. Die Konsep EIA&EMPR en alle bylae sal beskikbaar wees op die Dropbox webtuiste skakel:

<https://www.dropbox.com/sh/9c4d2jdd158iyI5/AACEFvjXdWuMa-cJf1fBZbPca?dl=0>

'n Harde kopieë sal ook beskikbaar wees by die Mogalakwena Munisipaliteit se kantore in Mokopane (54 Retief Street, Mokopane).

Indien u nie in staat is om toegang te verkry tot die verslae nie of die dokumente wil ontvang via 'n ander metode, voel asseblief vry om ons te kontak sodat alternatiewe reëlings getref kan word.

Voorsien asseblief kommentaar op die boonste verslag, deur asseblief u naam, kontakbesonderhede, belangstelling en kommentaar/relevante kwessies op die saak skriftelik voor of teen **Vrydag, 08 Januarie 2021** aan Exigo (besonderhede hieronder).

**Me C. Uys (Exigo Omgewingseenheid)**

Tel: 012 751 2160

Faks: 086 607 2406

Pos: Postnet Suite 74, Privaatsak X04, Menlo Park, 0102

Epos: [chantal@exigo3.com](mailto:chantal@exigo3.com)

**Publieke Vergadering:**

'n Publieke vergadering sal gehou word op **Donderdag, 3 Desember 2020**, by die **Oasis Hotel (1 Thabo Mbeki Drive, Mokopane)**., vanaf **16:00 tot 19:00**. Geïntereeerde en Geaffekteerde Partye is welkom om die publieke vergadering op die spesifieke dag en tyd by te woon.

Die voorlegging van die publieke vergadering sal aanlyn beskikbaar gemaak word vir die I&AP's wie verkies om dit aanlyn te kyk eerder as om die publieke vergadering by te woon. Die voorlegging sal 3 Desember 2020 beskikbaar wees op die bogenoemde Dropbox webtuiste skakel.

**Aanlyn V&A sessie:**

Daarbenewens sal daar ook op **7 Desember 2020** 'n vraag en antwoord (V&A) sessie op die Zoom platform gehou word tydens die volgende tye:

- 09:00 to 10:30 am
- 15:30 to 17:00 pm

Registreer asseblief voor 7 Desember 2020 vir een van die bogenoemde tye om die relevante Zoom-vergaderingbesonderhede te ontvang.

Groete,

Chantal Uys (*elektronies gestuur*)  
Omgewingsassesseringspraktisyn  
Exigo Sustainability (Pty) Ltd

**KOMMENTAAR BLAD**

**KENNISGEWING MET BETREKKING TOT DIE BESIKKBAARHEID VAN DIE KONSEP  
OMGEWINGSIMPAKSTUDIE EN OMGEWINGSBESTUURSPLAN (EIA&EMPR) VIR KOMMENTAAR VIR DIE  
VOORGESTELDE ZEBEDIELA NIKKEL MYN OP VERSKEIE GEDEELTES VAN DIE PLASE UITLOOP 3 KS,  
BLOEMHOF 4 KS, AMATAVA 41 KS & PIET POTGIERSRUST TOWN AND TOWNLANDS 44KS, IN DIE  
MOGALAKWENA PLAASLIKE EN WATERBERG DISTRIK MUNISIPALITEITE VAN DIE LIMPOPO PROVINSIE  
Projek Verwysing: LP30/5/1/2/3/2/1(10174)EM & LP30/5/1/2/2/10174MR**

Titel:		Tel nommer (Werk):	
Naam:		Tel nommer (Sel):	
Van:		Faks nommer (Werk):	
Hoedanigheid/Belangstelling		E-pos adres:	
Pos/Residensiële Adres			

**Kommentaar op die voorgestelde ontwikkeling (U IS WELKOM OM ADDISIONELE BLADSYE TE GEBRUIK)**

<b>5. Omgewingskwessies:</b>	(soos water, ekologie, besoedeling ens.)	<b>6. Sosio-ekonomiese kwessies:</b>	(soos werkskepping, veiligheid en sekuriteit)
<b>7. Kulturele / Historiese kwessies:</b>	(soos sloping van grafte/ou geboue.)	<b>Enige ander kwessies of kommentaar:</b>	

**Stuur asseblief hierdie registrasie vorm teen nie later as Vrydag, 08 Januarie 2021 deur middel van enige van die volgende metodes van kommunikasie, vir aandag aan:**

**Me C Uys**  
**Tel: 012 751 2160**  
**Faks: 086 607 2406**  
**Epos: [chantal@exigo3.com](mailto:chantal@exigo3.com)**  
**Pos: Postnet Suite 74, Privaatsak X04, Menlo Park, 0102**



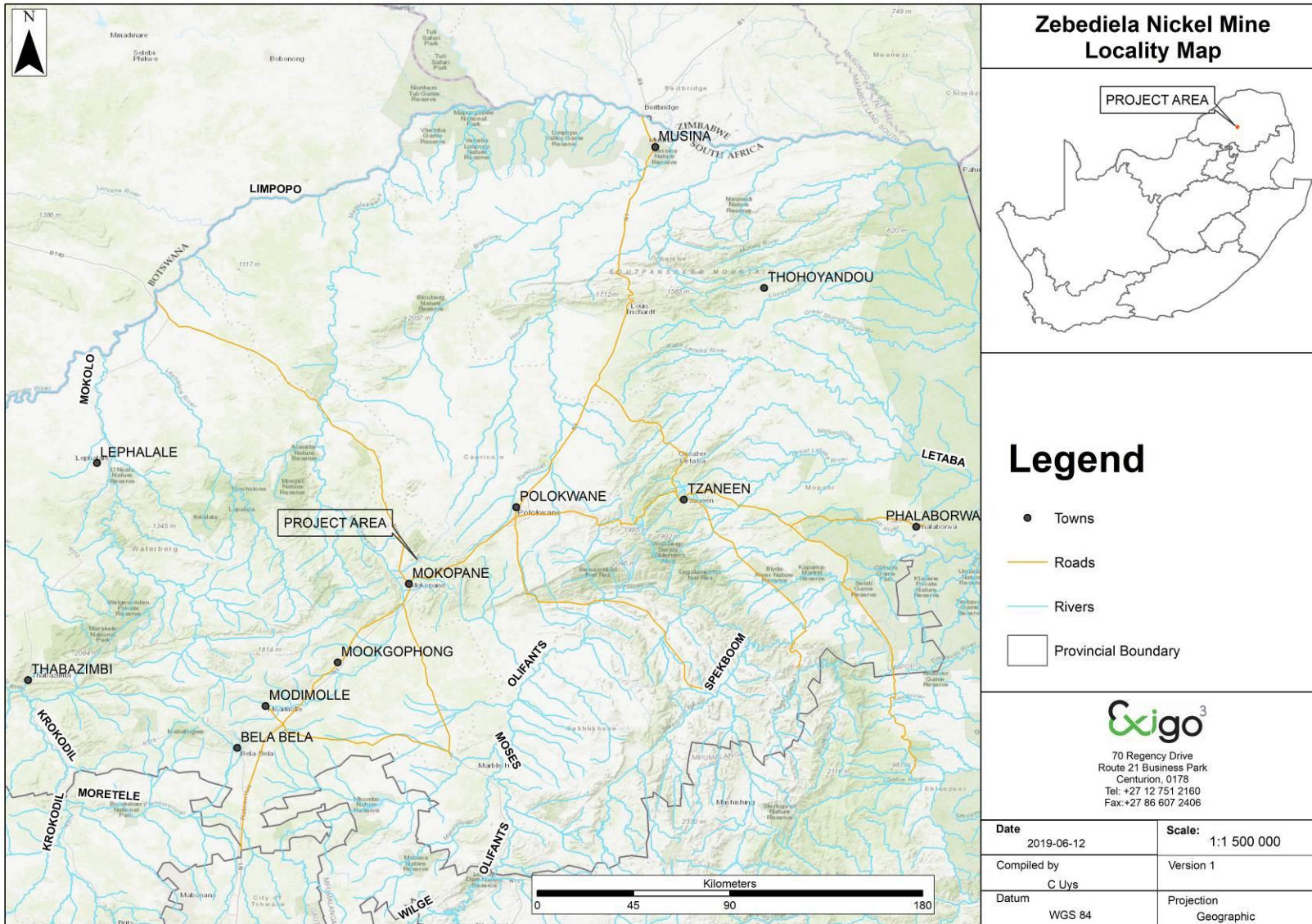


Figure 1: Regional Locality Map (Figuur 1: Streksligging Kaart)

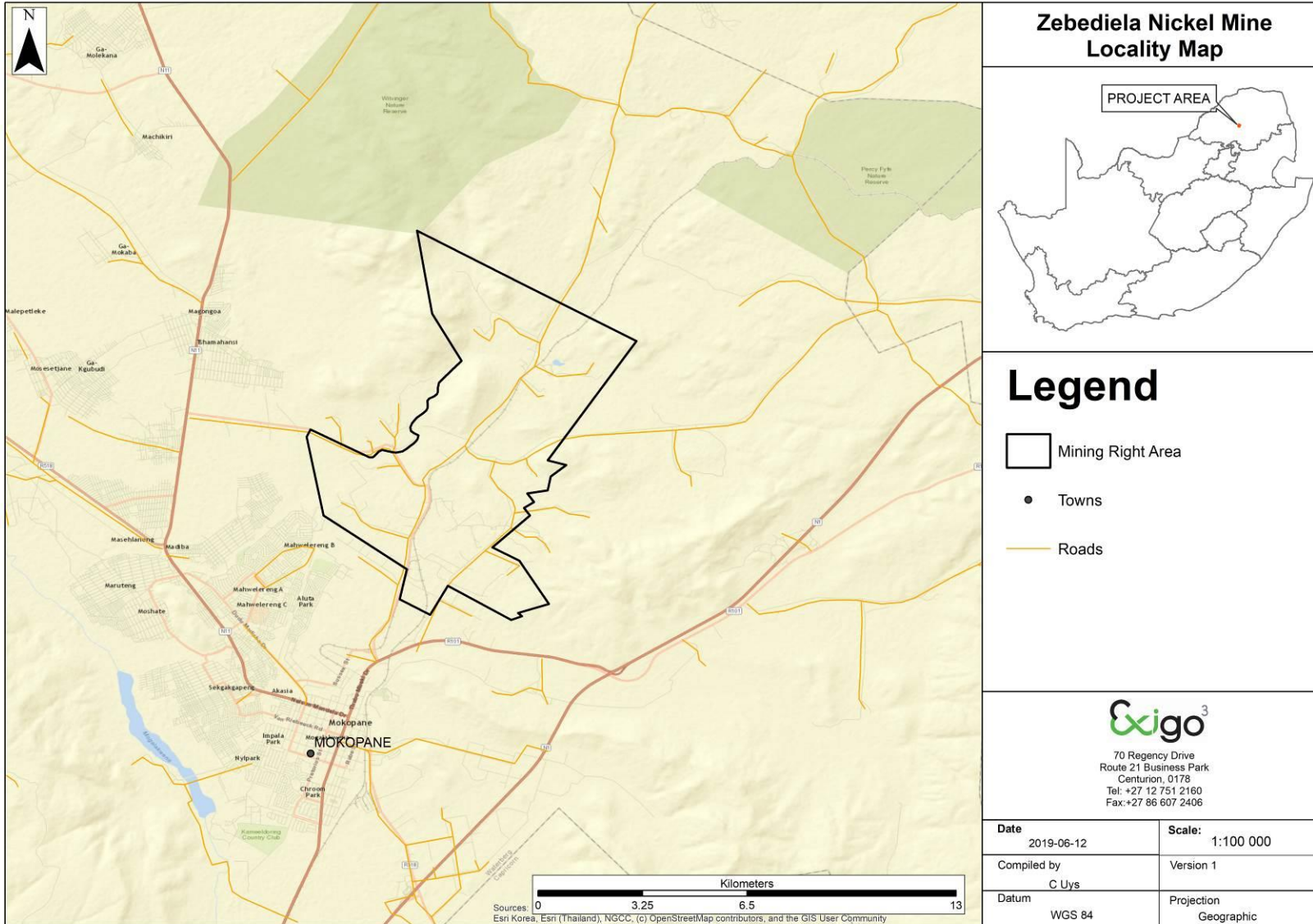


Figure 2: Locality Map of Mining Right Application Area (Figuur 2: Ligging Kaart van Mynregaanzoek area)

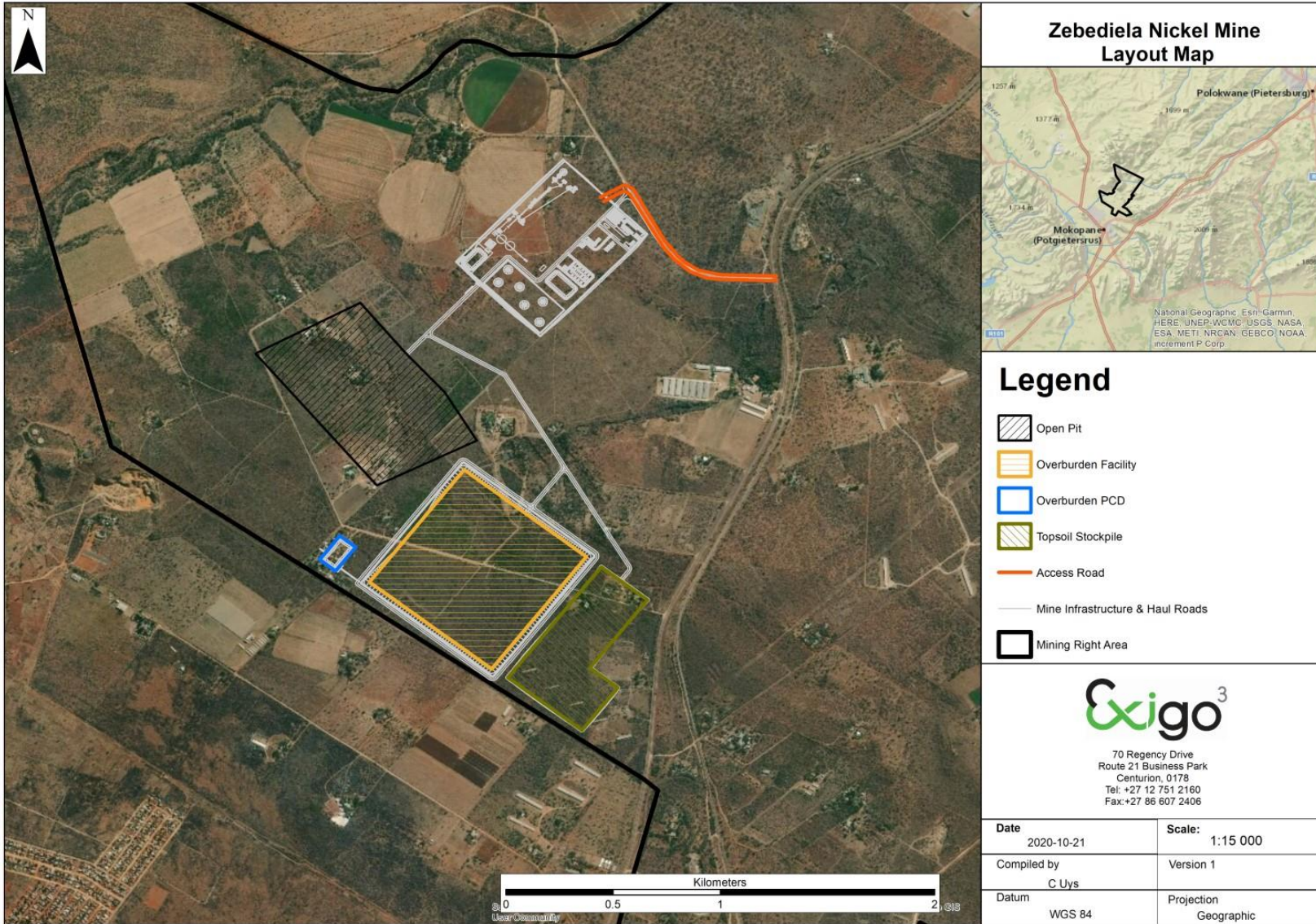


Figure 3: Preferred Layout Plan (Figuur 3: Verkiesde Uitleg Plan)

