

PART 03

KZN MUSEUM / ADDITIONS AND ALTERATIONS
TO ST ANNES SANATORIUM
DESIGN DEVELOPMENT - PRESENTATION 02

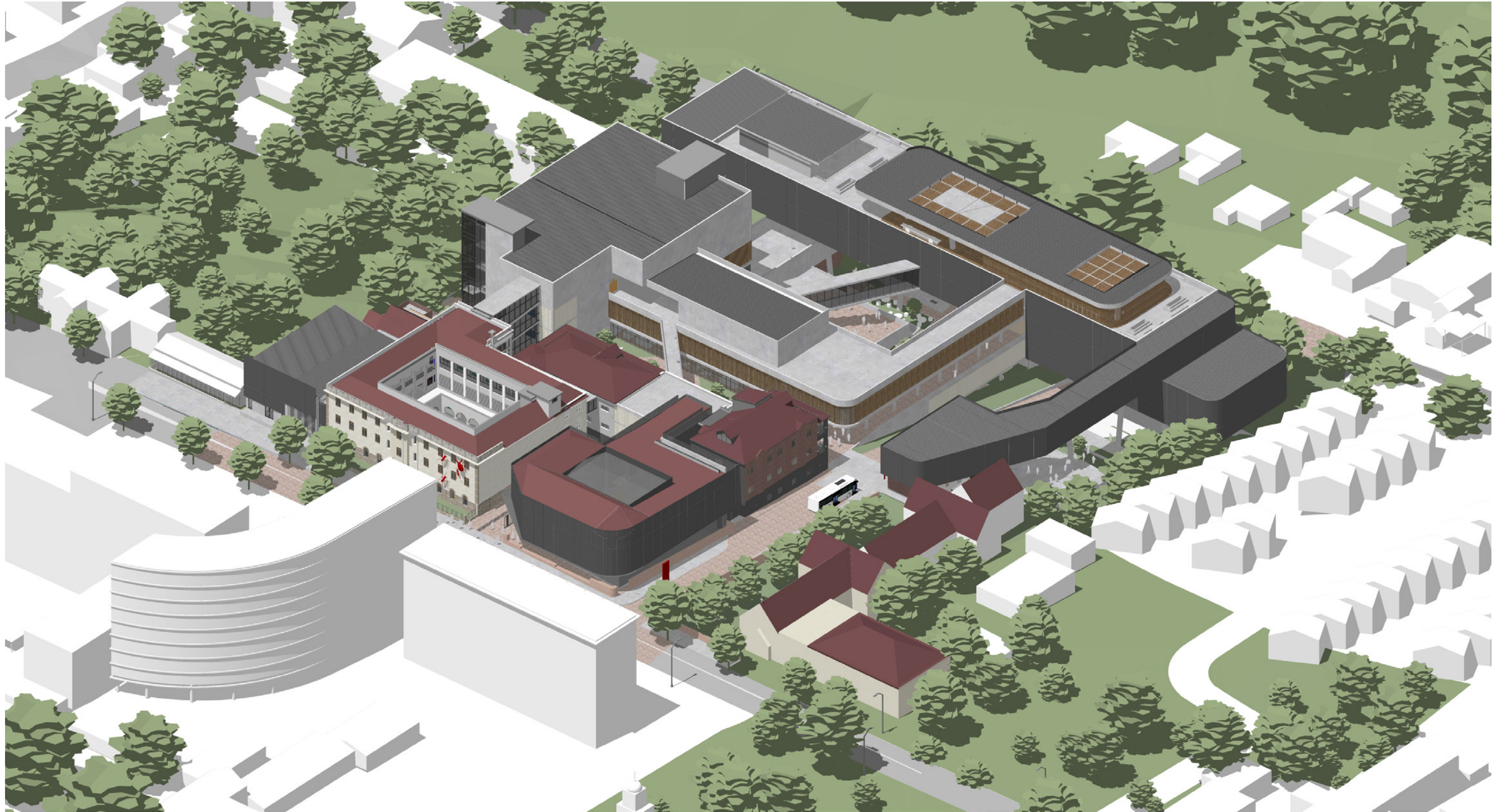
24 AUGUST 2021



D / SKETCH RENDERS

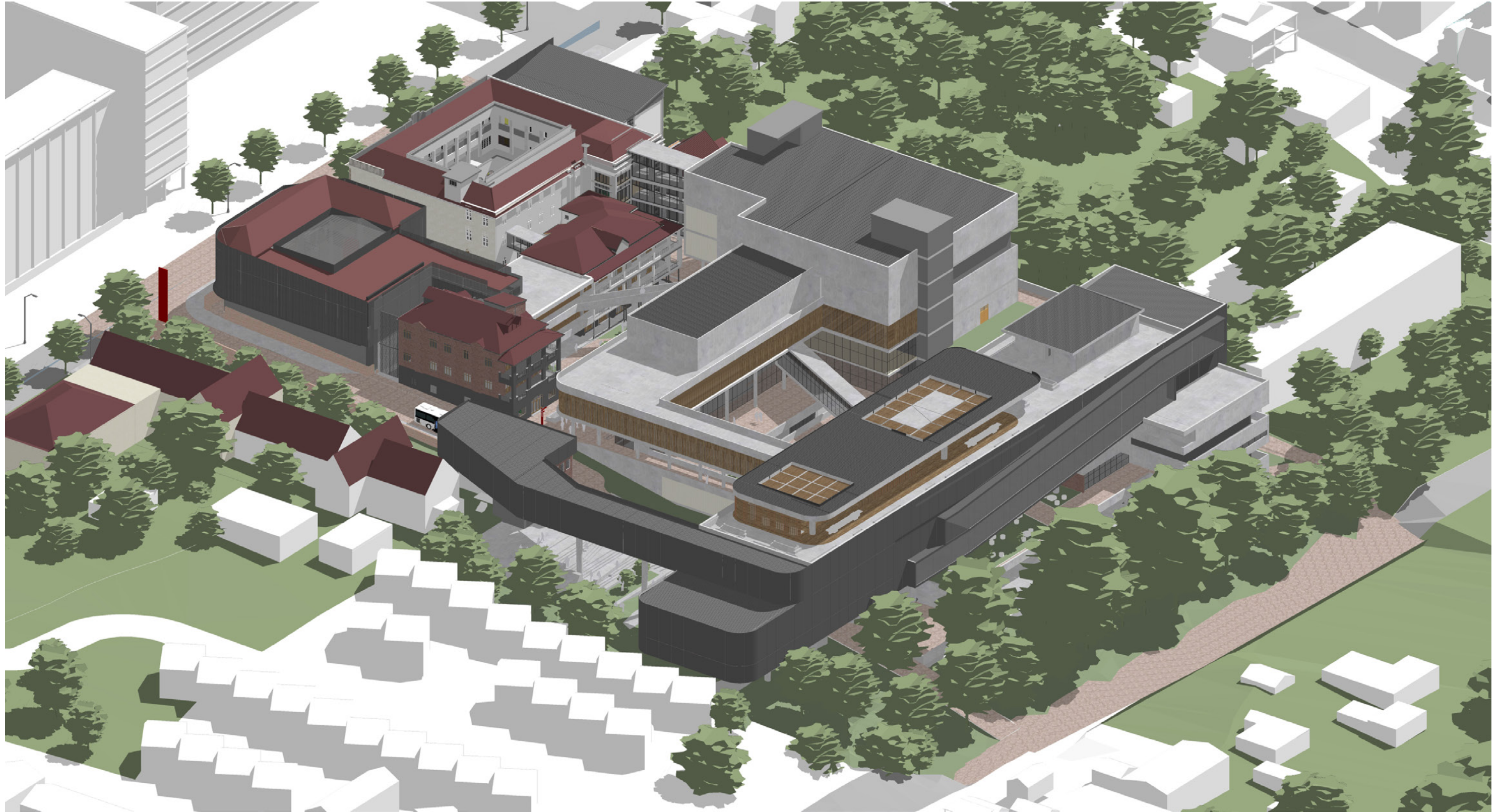
SW AERIAL	84
SOUTH AERIAL	85
JABU NDLOVU ELEVATION	86
DRIVEWAY ELEVATION	87

D1 / SKETCH RENDERS

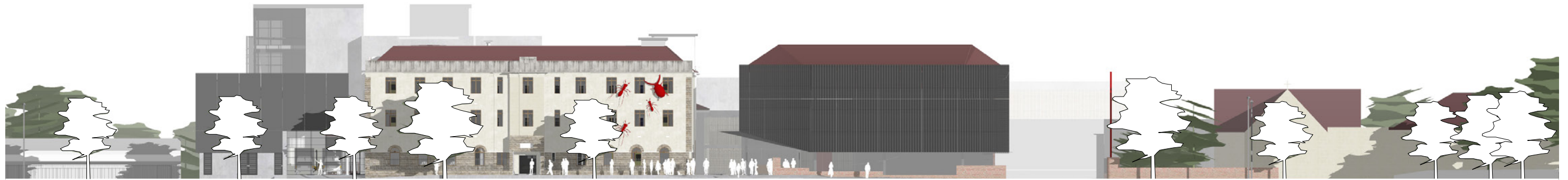


WEST AERIAL VIEW

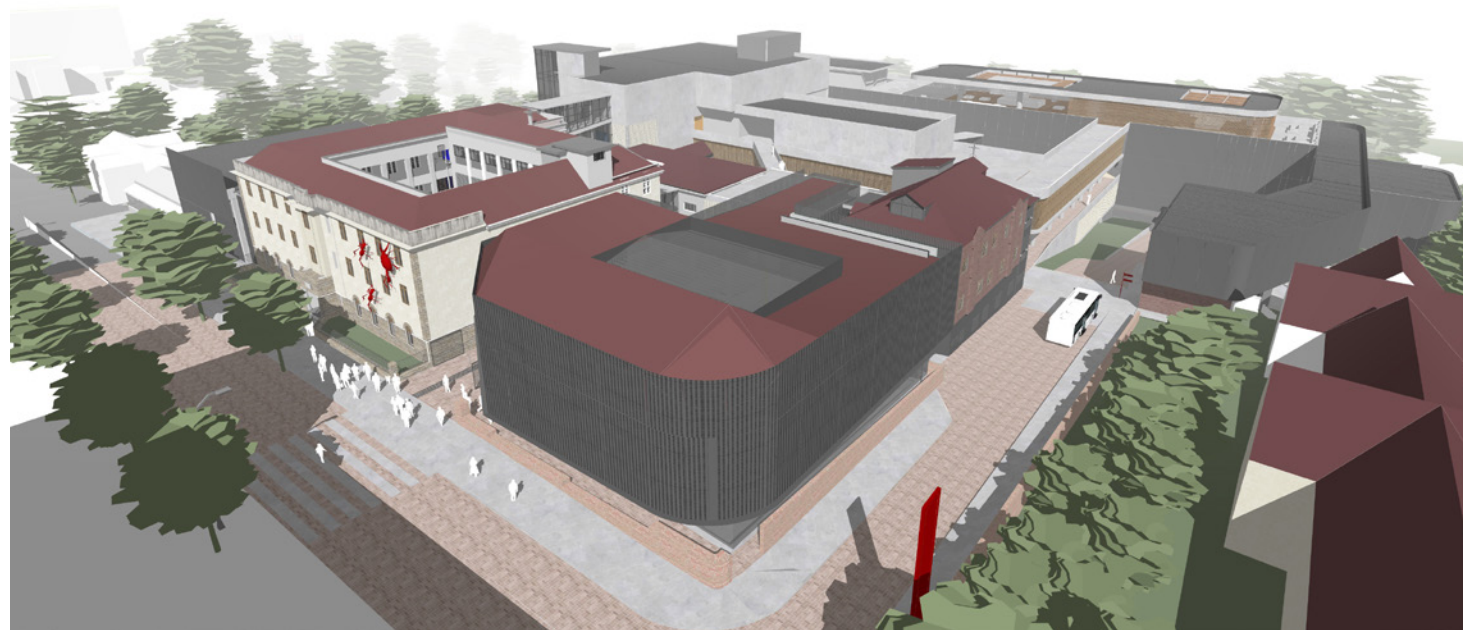
D1 / SKETCH RENDERS



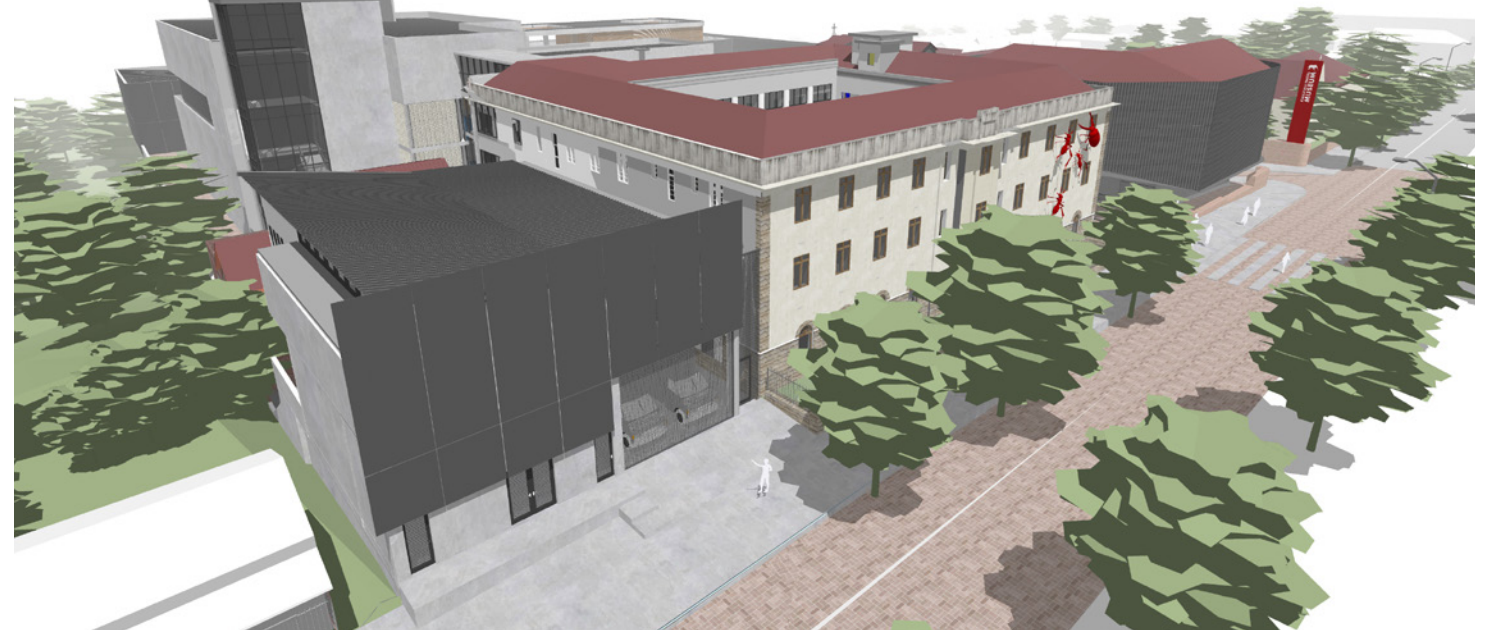
D2 / SKETCH RENDERS



NORTH WEST ELEVATION



WEST AERIAL

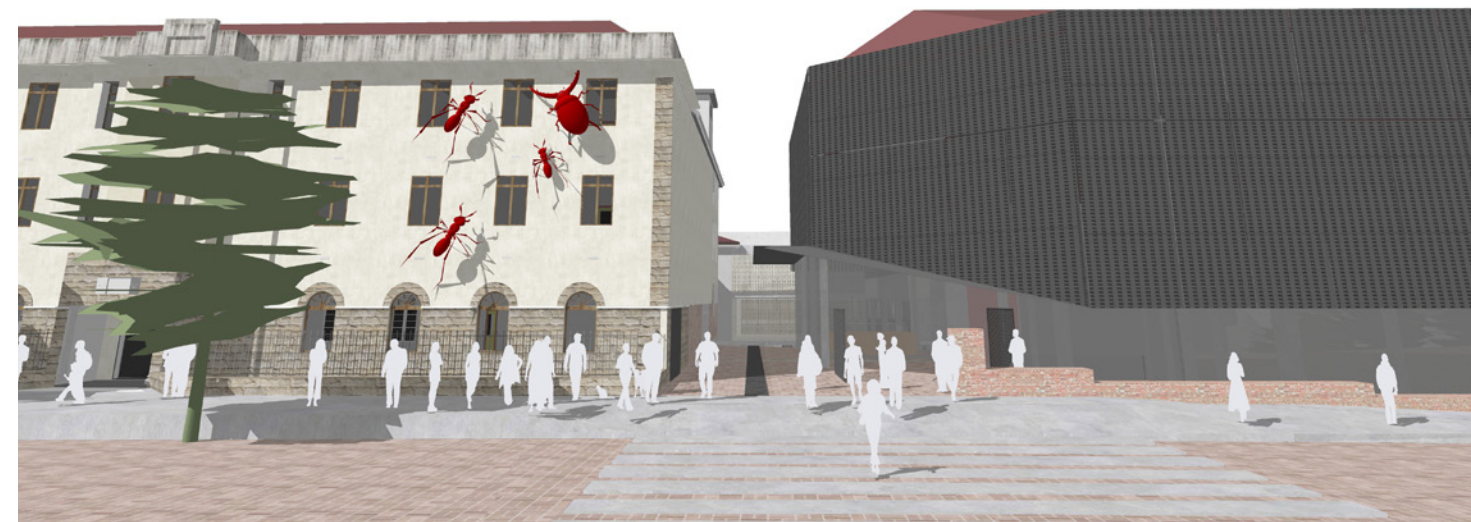


NORTH AERIAL

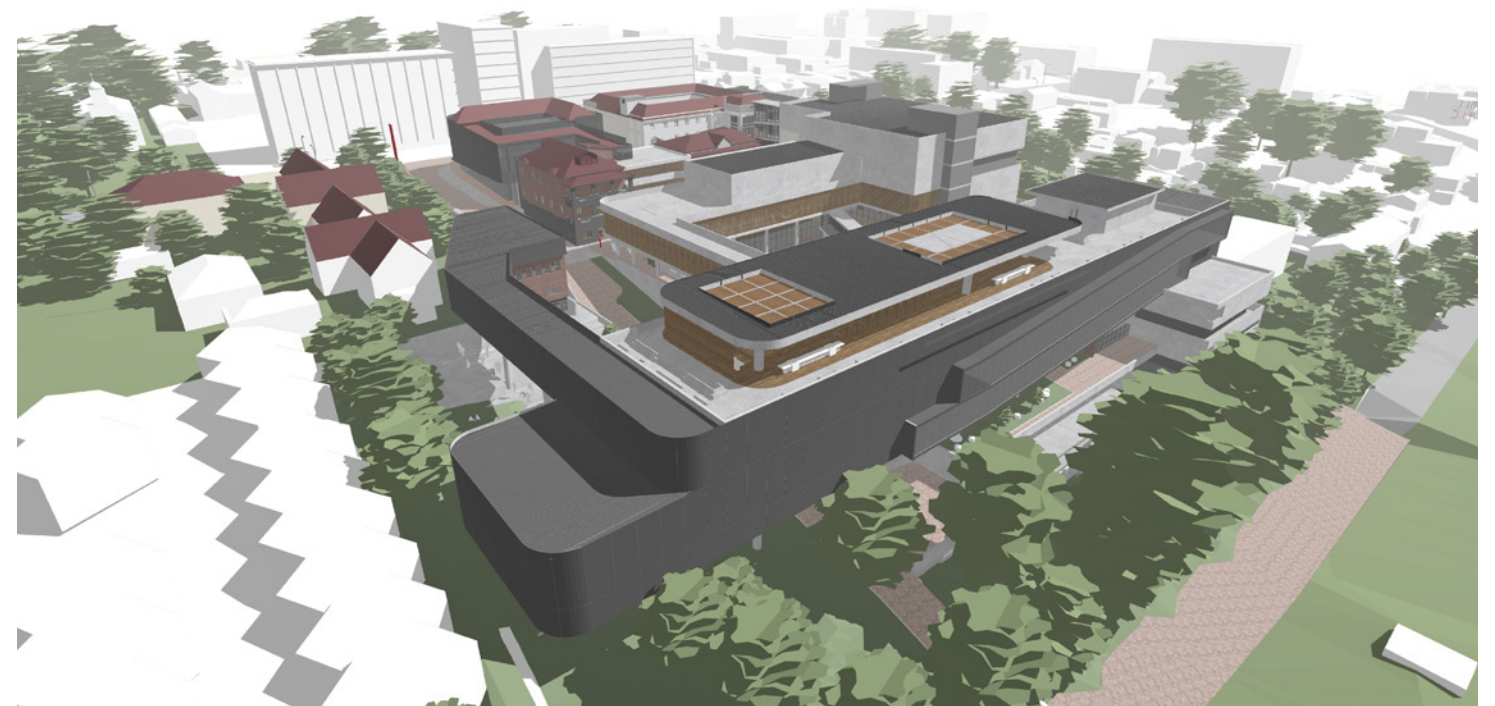
D2 / SKETCH RENDERS



SOUTH WEST ELEVATION (DRIVEWAY)



JABU NDLOVU ENTRANCE



SOUTH AERIAL

E / PRECEDENTS

COLLECTIONS	88
EXHIBITIONS	89
EXTERIOR RESTORATION	90
INTERIOR RESTORATION	91

E1 / COLLECTIONS



PACHACAMAC SITE MUSEUM / LLOSA CORTEGANA ARQUITECTOS



PACHACAMAC SITE MUSEUM / LLOSA CORTEGANA ARQUITECTOS



SCHINDLER HEADQUARTERS / NERI AND HU



SAYA PARK / ÁLVARO SIZA + CARLOS CASTANHEIRA

THE COLLECTIONS BLOCKS HANDLE MAJORITY OF THE CONTENT OF THE MUSEUM AND WILL BE HOUSED IN A MODERN, LOW LIGHT AND SOLID MASS, CONNECTED TO THE BASEMENT PARKING WITH MOMENTS WITHIN THE MASS FOR VIEWS AND LIGHT.

B3 / PRECEDENTS COLLECTIONS - EXTERIOR

E2 / EXHIBITIONS



FREEDOM PARK / MASHABANE ROSE + GAPP



ROTERRMANN'S FLOUR STORAGE / HGA ARCHITEKTUUR



ZINC INTERLOCKING PANELS / ARCHCLAD™



ANTWERP MANAGEMENT SCHOOL / HUB

THE LANGUAGE OF THE PERMANENT AND TEMPORARY EXHIBITIONS BLOCKS WILL BE A SKIN DESIGN OF SOLID AND PERFORATED ZINC PANELS. THIS MATERIAL IS LONG-LASTING AND CONTRASTS WELL WITH CONCRETE/ BRICK AND THE EXISTING HERITAGE BUILDINGS.

B3 / PRECEDENTS COLLECTIONS - EXTERIOR

E3 / HERITAGE RESTORATION _EXTERIOR



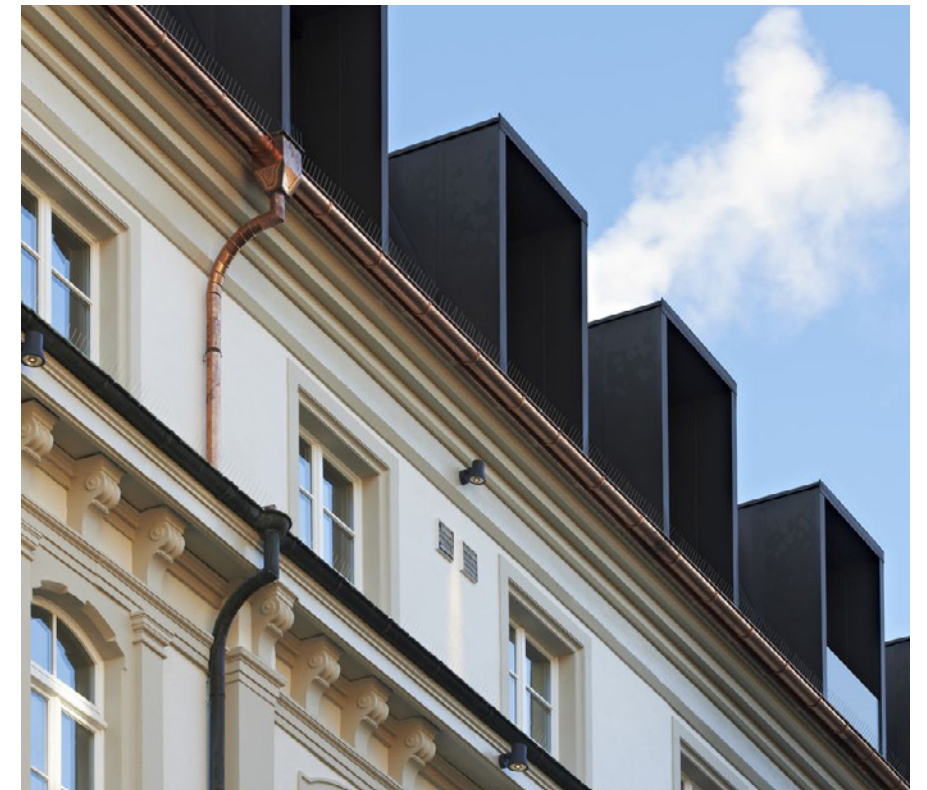
PACHACAMAC SITE MUSEUM / LLOSA CORTEGANA ARQUITECTOS



SHOREHAM STREET / PROJECT ORANGE



MUSEU RODIN BAHIA / MARCELO FERRAZ E FRANCISCO FANUCCI



ROOF RENOVATION / HÖFLER + STOLL

THE RESTORATION OF THE CURRENT HERITAGE BUILDINGS WILL FOCUS ON MINIMAL CHANGES WITH MODERN ELEMENTS WITHIN THE FACADE. ORIGINAL BRICK AND STONE WITH NEW OPENINGS WILL HIGHLIGHT THE NEW INTERVENTION AS WELL AS THE CONNECTION TO THE NEW FACADES.

B3 / PRECEDENTS COLLECTIONS - EXTERIOR

E4 / HERITAGE RESTORATION _INTERIOR



SANTO ANTONIO MUSEUM / SITE SPECIFIC ARQUITECTURA



UNKNOWN REFERENCES



MUSEUM OF AFRICAN ARTS / NINEY ET MARCA + GERNAY ARCHITECTE



UNKNOWN REFERENCE

THE EXISTING ST. ANNES BUILDING WILL BE RESTORED AND REFURBISHED INTO A MODERN MUSEUM ADMINISTRATION BUILDING WITH OFFICES AND STORAGE WHILE ALSO INCORPORATING WORKSHOPS AND SMALL EXHIBITIONS, SHOPS AND OTHER PUBLIC FACILITIES.

THE APPROACH HERE WOULD BE TO KEEP WHAT HAS ARCHITECTURAL MERIT AND INTRODUCE MODERN WARM FINISHES .

B3 / PRECEDENTS HERITAGE - INTERIOR

END / THANK YOU.