

**SCREENING REPORT FOR AN ENVIRONMENTAL AUTHORIZATION OR
FOR A PART TWO AMENDMENT OF AN ENVIRONMENTAL AUTHORISATION
AS REQUIRED BY THE 2014 EIA REGULATIONS – PROPOSED DEVELOPMENT
FOOTPRINT ENVIRONMENTAL SENSITIVITY**

EIA Reference number: TBC

Project name: Kenhardt Access Road

Project title: Access option c

Date screening report generated: 20/10/2020 12:09:17

Applicant: Scatec

Compiler: Cape EAPrac

Compiler signature:

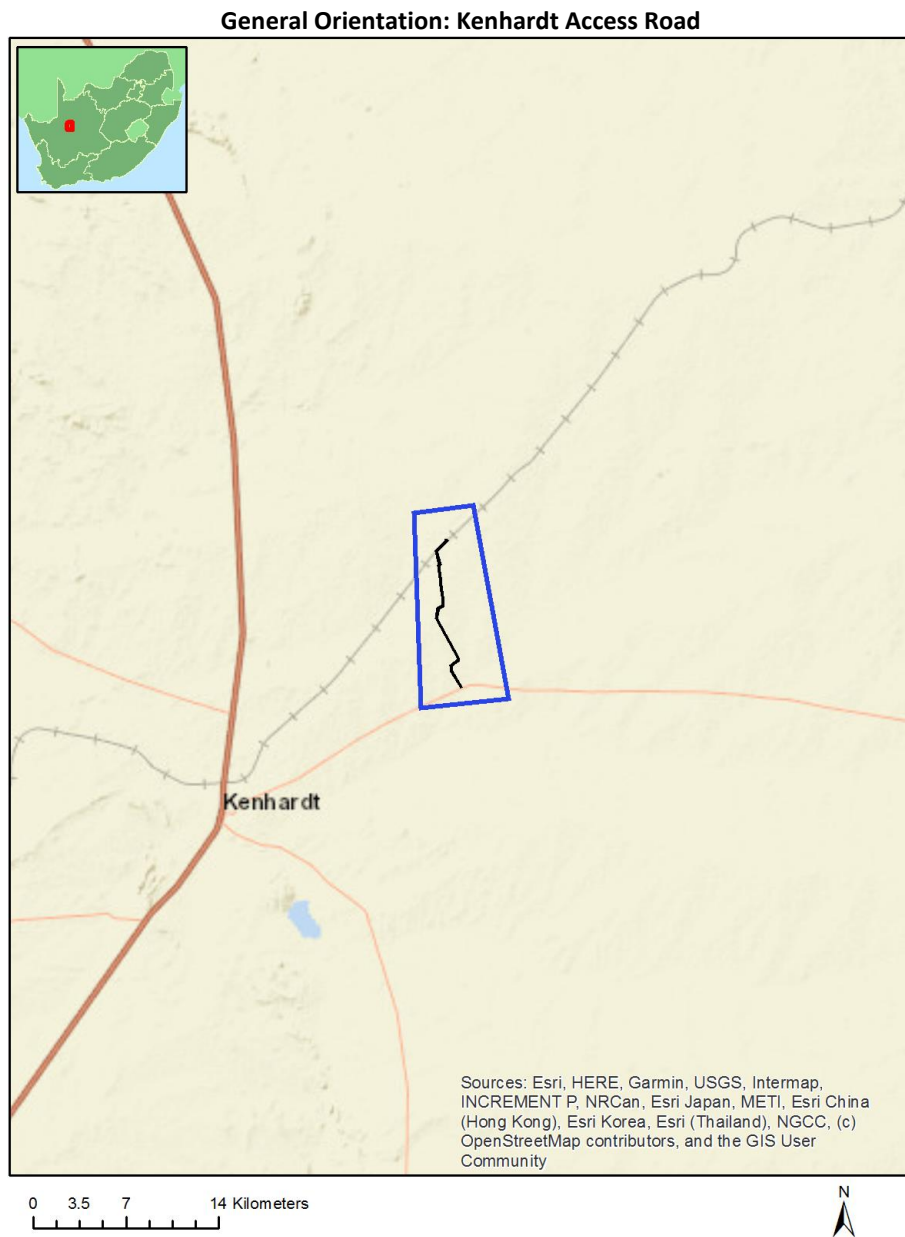
.....

Table of Contents

Proposed Project Location	3
Orientation map 1: General location	3
Map of proposed site and relevant area(s)	4
Cadastral details of the proposed site	4
Wind and Solar developments with an approved Environmental Authorisation or applications under consideration within 30 km of the proposed area	8
Environmental Management Frameworks relevant to the application	8
Environmental screening results and assessment outcomes	9
Relevant development incentives, restrictions, exclusions or prohibitions	9
Map indicating proposed development footprint within applicable development incentive, restriction, exclusion or prohibition zones	10
Proposed Development Area Environmental Sensitivity	10
Specialist assessments identified	11
Results of the environmental sensitivity of the proposed area	13
MAP OF RELATIVE AGRICULTURE THEME SENSITIVITY	13
MAP OF RELATIVE ANIMAL SPECIES THEME SENSITIVITY	14
MAP OF RELATIVE AQUATIC BIODIVERSITY THEME SENSITIVITY	15
MAP OF RELATIVE ARCHAEOLOGICAL AND CULTURAL HERITAGE THEME SENSITIVITY	16
MAP OF RELATIVE CIVIL AVIATION THEME SENSITIVITY	17
MAP OF RELATIVE DEFENCE THEME SENSITIVITY	18
MAP OF RELATIVE PLANT SPECIES THEME SENSITIVITY	19
MAP OF RELATIVE TERRESTRIAL BIODIVERSITY THEME SENSITIVITY	20

Proposed Project Location

Orientation map 1: General location



Map of proposed site and relevant area(s)



Cadastral details of the proposed site

Property details:

No	Farm Name	Farm/ Erf No	Portion	Latitude	Longitude	Property Type
1	BOVEN RUGZEER	169	0	29°11'52.42S	21°20'52E	Farm
2	ONDER RUGZEER	168	0	29°16'27.93S	21°17'12.38E	Farm
3	ONDER RUGZEER	168	0	29°15'31.6S	21°19'27.98E	Farm Portion
4	ONDER RUGZEER	168	0	29°11'13.39S	21°17'46.96E	Farm Portion
5	ONDER RUGZEER	168	3	29°11'2.2S	21°16'59.74E	Farm Portion
6	ONDER RUGZEER	168	1	29°16'5.01S	21°15'50.86E	Farm Portion
7	BOVEN RUGZEER	169	0	29°9'49.11S	21°18'53.18E	Farm Portion
8	ONDER RUGZEER	168	2	29°19'26.74S	21°18'7.97E	Farm Portion
9	BOVEN RUGZEER	169	2	29°9'55.82S	21°19'47.83E	Farm Portion
10	ONDER RUGZEER	168	4	29°11'49.98S	21°17'38.2E	Farm Portion
11	BOVEN RUGZEER	169	0	29°12'5.08S	21°21'2E	Farm Portion

Development footprint¹ vertices:

¹ “development footprint”, means the area within the site on which the development will take place and includes all ancillary developments for example roads, power lines, boundary walls, paving etc. which require vegetation clearance or which will be disturbed and for which the application has been submitted.

Footprint	Latitude	Longitude
1	29°16'28.21S	21°18'53.09E
1	29°16'28.21S	21°18'53.06E
1	29°16'28.2S	21°18'53.05E
1	29°16'28.2S	21°18'53.03E
1	29°16'28.19S	21°18'53.01E
1	29°16'28.18S	21°18'52.99E
1	29°16'28.17S	21°18'52.97E
1	29°16'28.16S	21°18'52.95E
1	29°16'28.14S	21°18'52.94E
1	29°16'28.12S	21°18'52.94E
1	29°15'53.26S	21°18'28.75E
1	29°15'53.26S	21°18'28.75E
1	29°15'53.24S	21°18'28.73E
1	29°15'53.22S	21°18'28.73E
1	29°15'53.2S	21°18'28.73E
1	29°15'53.19S	21°18'28.73E
1	29°15'41.28S	21°18'26.68E
1	29°15'41.27S	21°18'26.68E
1	29°15'41.25S	21°18'26.68E
1	29°15'41.23S	21°18'26.68E
1	29°15'41.21S	21°18'26.69E
1	29°15'41.19S	21°18'26.7E
1	29°15'41.18S	21°18'26.71E
1	29°15'41.16S	21°18'26.71E
1	29°15'41.15S	21°18'26.73E
1	29°15'41.14S	21°18'26.75E
1	29°15'41.14S	21°18'26.75E
1	29°15'28.49S	21°18'44.93E
1	29°15'25.91S	21°18'45.42E
1	29°14'0.07S	21°17'51.5E
1	29°14'0.06S	21°17'51.5E
1	29°14'0.04S	21°17'51.49E
1	29°14'0.01S	21°17'51.49E
1	29°14'0S	21°17'51.48E
1	29°13'59.98S	21°17'51.48E
1	29°13'59.96S	21°17'51.49E
1	29°13'59.96S	21°17'51.49E
1	29°13'38.05S	21°17'55.95E
1	29°13'38.03S	21°17'55.95E
1	29°13'38.01S	21°17'55.96E
1	29°13'37.99S	21°17'55.97E
1	29°13'37.98S	21°17'55.99E
1	29°13'37.97S	21°17'56E
1	29°13'37.95S	21°17'56.01E
1	29°13'37.95S	21°17'56.04E
1	29°13'37.94S	21°17'56.04E
1	29°13'32.44S	21°18'7.62E
1	29°13'31.67S	21°18'8.31E
1	29°13'27.86S	21°18'7.8E
1	29°13'27.86S	21°18'7.8E
1	29°13'27.86S	21°18'7.8E
1	29°13'11.56S	21°18'5.7E
1	29°12'50.62S	21°18'2.85E
1	29°12'31.92S	21°18'0.37E
1	29°12'21.14S	21°17'59.01E

1	29°12'7.67S	21°17'57.29E
1	29°12'7.67S	21°17'57.28E
1	29°12'7.65S	21°17'57.28E
1	29°12'7.63S	21°17'57.29E
1	29°12'7.61S	21°17'57.29E
1	29°12'7.59S	21°17'57.29E
1	29°12'7.57S	21°17'57.31E
1	29°12'7.56S	21°17'57.31E
1	29°12'4.36S	21°17'59.78E
1	29°11'37.71S	21°17'51.28E
1	29°11'37.7S	21°17'51.28E
1	29°11'37.67S	21°17'51.28E
1	29°11'37.66S	21°17'51.28E
1	29°11'37.64S	21°17'51.28E
1	29°11'37.62S	21°17'51.29E
1	29°11'37.6S	21°17'51.29E
1	29°11'37.59S	21°17'51.3E
1	29°11'37.57S	21°17'51.31E
1	29°11'37.56S	21°17'51.32E
1	29°11'37.56S	21°17'51.32E
1	29°11'14.81S	21°18'17.27E
1	29°11'11.75S	21°18'15.55E
1	29°11'11.74S	21°18'15.54E
1	29°11'11.72S	21°18'15.54E
1	29°11'11.7S	21°18'15.54E
1	29°11'11.69S	21°18'15.53E
1	29°11'11.67S	21°18'15.53E
1	29°11'11.65S	21°18'15.54E
1	29°11'11.63S	21°18'15.54E
1	29°11'11.61S	21°18'15.54E
1	29°11'11.59S	21°18'15.55E
1	29°11'11.58S	21°18'15.56E
1	29°11'11.57S	21°18'15.58E
1	29°11'11.55S	21°18'15.59E
1	29°11'11.54S	21°18'15.6E
1	29°11'11.53S	21°18'15.63E
1	29°11'11.53S	21°18'15.65E
1	29°11'11.52S	21°18'15.67E
1	29°11'11.52S	21°18'15.69E
1	29°11'11.51S	21°18'15.71E
1	29°11'11.52S	21°18'15.74E
1	29°11'11.52S	21°18'15.76E
1	29°11'11.53S	21°18'15.78E
1	29°11'11.53S	21°18'15.79E
1	29°11'11.54S	21°18'15.82E
1	29°11'11.55S	21°18'15.83E
1	29°11'11.57S	21°18'15.85E
1	29°11'11.58S	21°18'15.86E
1	29°11'11.59S	21°18'15.87E
1	29°11'11.6S	21°18'15.88E
1	29°11'14.77S	21°18'17.65E
1	29°11'14.78S	21°18'17.65E
1	29°11'14.8S	21°18'17.66E
1	29°11'14.82S	21°18'17.67E
1	29°11'14.84S	21°18'17.67E
1	29°11'14.86S	21°18'17.67E
1	29°11'14.88S	21°18'17.67E
1	29°11'14.89S	21°18'17.66E
1	29°11'14.91S	21°18'17.65E
1	29°11'14.93S	21°18'17.64E

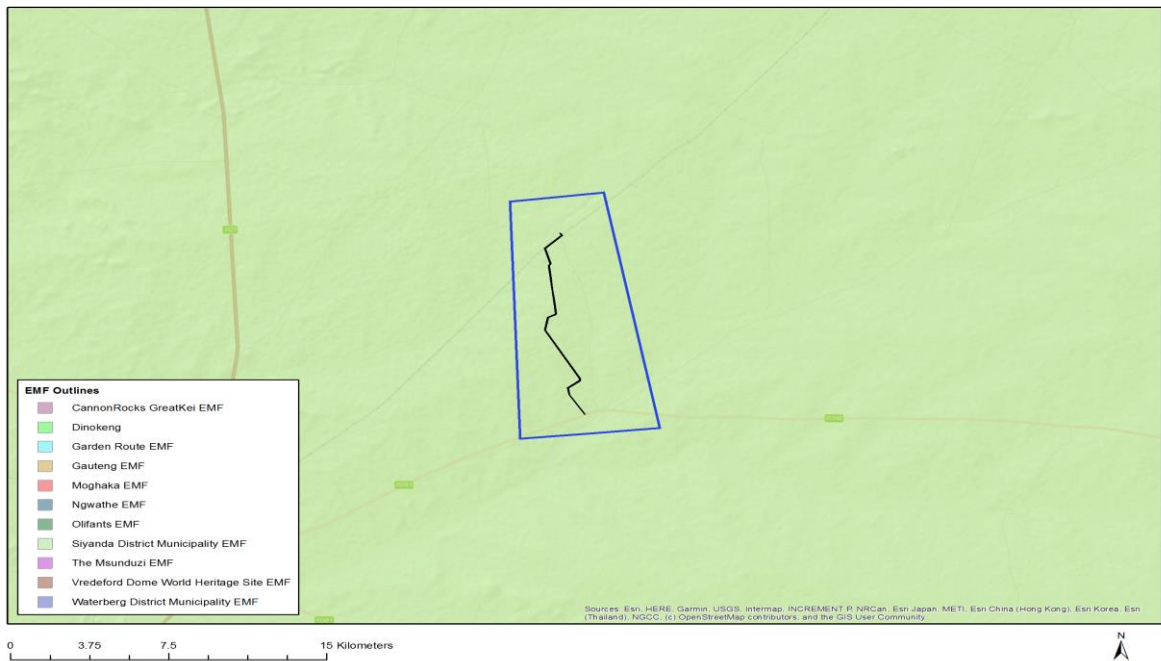
1	29°11'14.95S	21°18'17.64E
1	29°11'14.96S	21°18'17.62E
1	29°11'14.97S	21°18'17.62E
1	29°11'37.72S	21°17'51.67E
1	29°12'4.34S	21°18'0.16E
1	29°12'4.36S	21°18'0.16E
1	29°12'4.38S	21°18'0.16E
1	29°12'4.4S	21°18'0.16E
1	29°12'4.41S	21°18'0.16E
1	29°12'4.43S	21°18'0.15E
1	29°12'4.45S	21°18'0.15E
1	29°12'4.47S	21°18'0.13E
1	29°12'4.47S	21°18'0.13E
1	29°12'7.7S	21°17'57.66E
1	29°12'21.1S	21°17'59.37E
1	29°12'31.89S	21°18'0.74E
1	29°12'50.57S	21°18'3.21E
1	29°13'11.52S	21°18'6.06E
1	29°13'27.82S	21°18'8.16E
1	29°13'31.7S	21°18'8.68E
1	29°13'31.71S	21°18'8.68E
1	29°13'31.72S	21°18'8.68E
1	29°13'31.75S	21°18'8.68E
1	29°13'31.77S	21°18'8.68E
1	29°13'31.79S	21°18'8.68E
1	29°13'31.81S	21°18'8.66E
1	29°13'31.82S	21°18'8.66E
1	29°13'31.82S	21°18'8.65E
1	29°13'32.67S	21°18'7.89E
1	29°13'32.68S	21°18'7.87E
1	29°13'32.69S	21°18'7.85E
1	29°13'32.7S	21°18'7.84E
1	29°13'32.71S	21°18'7.83E
1	29°13'38.19S	21°17'56.3E
1	29°13'59.96S	21°17'51.86E
1	29°15'25.8S	21°18'45.77E
1	29°15'25.82S	21°18'45.78E
1	29°15'25.83S	21°18'45.78E
1	29°15'25.85S	21°18'45.79E
1	29°15'25.87S	21°18'45.79E
1	29°15'25.89S	21°18'45.79E
1	29°15'25.91S	21°18'45.79E
1	29°15'28.6S	21°18'45.29E
1	29°15'28.61S	21°18'45.29E
1	29°15'28.62S	21°18'45.28E
1	29°15'28.64S	21°18'45.27E
1	29°15'28.65S	21°18'45.26E
1	29°15'28.67S	21°18'45.25E
1	29°15'28.69S	21°18'45.24E
1	29°15'28.7S	21°18'45.22E
1	29°15'28.71S	21°18'45.22E
1	29°15'41.32S	21°18'27.06E
1	29°15'53.12S	21°18'29.08E
1	29°16'27.96S	21°18'53.25E
1	29°16'27.97S	21°18'53.25E
1	29°16'27.98S	21°18'53.26E
1	29°16'27.99S	21°18'53.27E
1	29°16'28.01S	21°18'53.27E
1	29°16'28.03S	21°18'53.27E
1	29°16'28.05S	21°18'53.27E

1	29°16'28.07S	21°18'53.27E
1	29°16'28.09S	21°18'53.27E
1	29°16'28.1S	21°18'53.26E
1	29°16'28.12S	21°18'53.25E
1	29°16'28.14S	21°18'53.24E
1	29°16'28.16S	21°18'53.23E
1	29°16'28.17S	21°18'53.21E
1	29°16'28.18S	21°18'53.19E
1	29°16'28.19S	21°18'53.17E
1	29°16'28.2S	21°18'53.15E
1	29°16'28.2S	21°18'53.13E
1	29°16'28.21S	21°18'53.11E
1	29°16'28.21S	21°18'53.09E

Wind and Solar developments with an approved Environmental Authorisation or applications under consideration within 30 km of the proposed area

No nearby wind or solar developments found.

Environmental Management Frameworks relevant to the application



Environmental Management Framework	LINK
Siyanda District Municipality EMF	https://screening.environment.gov.za/ScreeningDownloads/EMF/SIYANDA_EMF_REPORT_2008.doc

Environmental screening results and assessment outcomes

The following sections contain a summary of any development incentives, restrictions, exclusions or prohibitions that apply to the proposed development footprint as well as the most environmental sensitive features on the footprint based on the footprint sensitivity screening results for the application classification that was selected. The application classification selected for this report is:

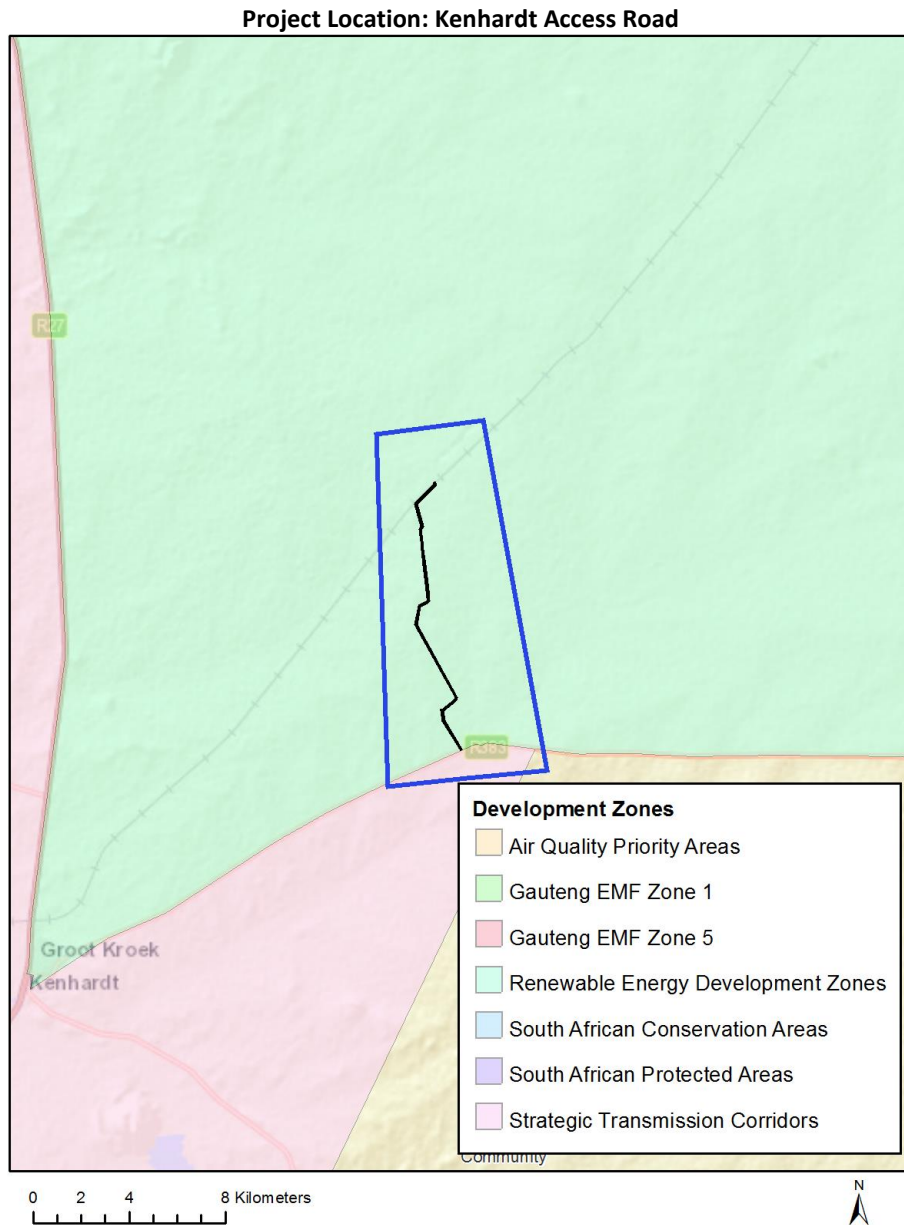
Infrastructure | Transport Services | Roads | Private | Roads - Private.

Relevant development incentives, restrictions, exclusions or prohibitions

The following development incentives, restrictions, exclusions or prohibitions and their implications that apply to this footprint are indicated below.

Incentive, restriction or prohibition	Implication
Strategic Transmission Corridor- Western corridor	https://screening.environment.gov.za/ScreeningDownloads/DevelopmentZones/GNR_350 of 13 April 2017.pdf
Renewable energy development zones 7- Uppington	https://screening.environment.gov.za/ScreeningDownloads/DevelopmentZones/GNR_350 of 13 April 2017.pdf

Map indicating proposed development footprint within applicable development incentive, restriction, exclusion or prohibition zones



Proposed Development Area Environmental Sensitivity

The following summary of the development footprint environmental sensitivities is identified. Only the highest environmental sensitivity is indicated. The footprint environmental sensitivities for the proposed development footprint as identified, are indicative only and must be verified on site by a suitably qualified person before the specialist assessments identified below can be confirmed.

Theme	Very High sensitivity	High sensitivity	Medium sensitivity	Low sensitivity
Agriculture Theme			X	
Animal Species Theme			X	

Aquatic Biodiversity Theme				X
Archaeological and Cultural Heritage Theme			X	
Civil Aviation Theme			X	
Defence Theme				X
Plant Species Theme			X	
Terrestrial Biodiversity Theme	X			

Specialist assessments identified

Based on the selected classification, and the environmental sensitivities of the proposed development footprint, the following list of specialist assessments have been identified for inclusion in the assessment report. It is the responsibility of the EAP to confirm this list and to motivate in the assessment report, the reason for not including any of the identified specialist study including the provision of photographic evidence of the footprint situation.

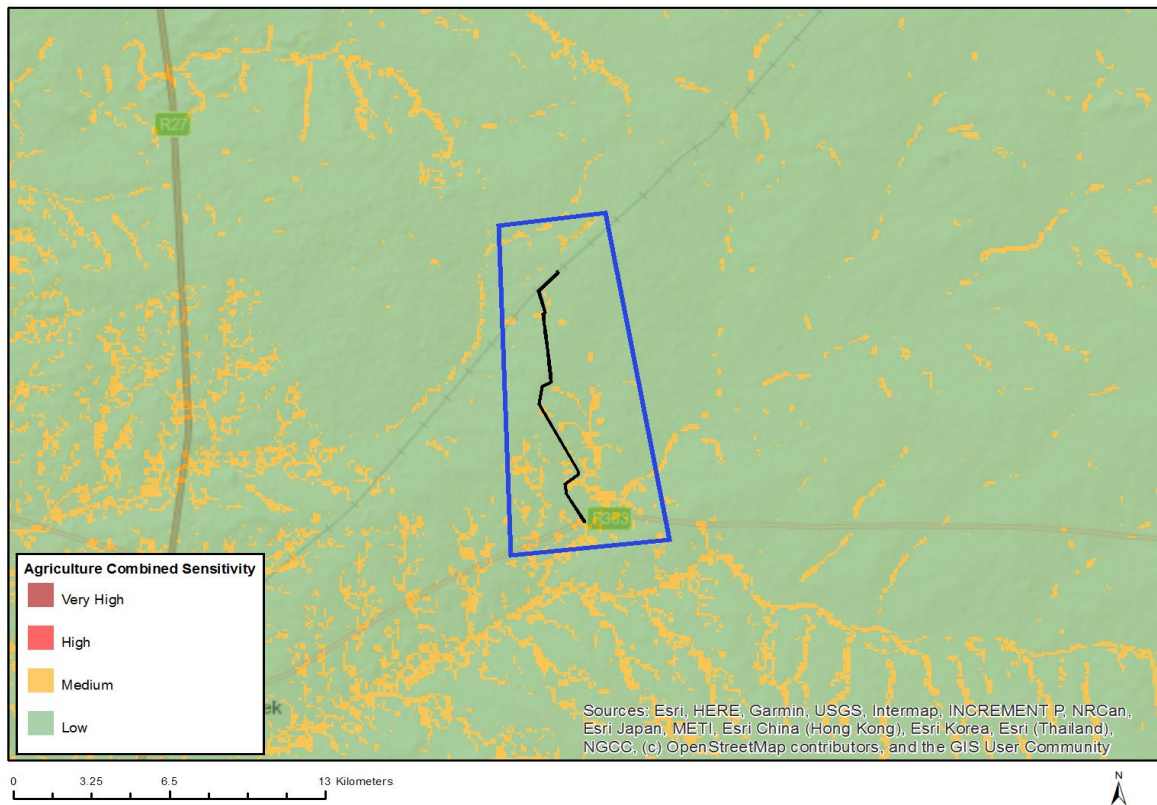
No	Specialist assessment	Assessment Protocol
1	Agricultural Impact Assessment	https://screening.environment.gov.za/ScreeningDownloads/AssessmentProtocols/Gazetted_General_Agriculture_Assessment_Protocols.pdf
2	Landscape/Visual Impact Assessment	https://screening.environment.gov.za/ScreeningDownloads/AssessmentProtocols/Gazetted_General_Requirement_Assessment_Protocols.pdf
3	Archaeological and Cultural Heritage Impact Assessment	https://screening.environment.gov.za/ScreeningDownloads/AssessmentProtocols/Gazetted_General_Requirement_Assessment_Protocols.pdf
4	Palaeontology Impact Assessment	https://screening.environment.gov.za/ScreeningDownloads/AssessmentProtocols/Gazetted_General_Requirement_Assessment_Protocols.pdf
5	Terrestrial Biodiversity Impact Assessment	https://screening.environment.gov.za/ScreeningDownloads/AssessmentProtocols/Gazetted_Terrestrial_Biodiversity_Assessment_Protocols.pdf
6	Aquatic Biodiversity Impact Assessment	https://screening.environment.gov.za/ScreeningDownloads/AssessmentProtocols/Gazetted_Aquatic_Biodiversity_Assessment_Protocols.pdf
7	Noise Impact Assessment	https://screening.environment.gov.za/ScreeningDownloads/AssessmentProtocols/Gazetted_Noise_Impacts_Assessment_Protocol.pdf

	ent	
8	Geotechnical Assessment	https://screening.environment.gov.za/ScreeningDownloads/AssessmentProtocols/Gazetted_General_Requirement_Assessment_Protocols.pdf
9	Plant Species Assessment	https://screening.environment.gov.za/ScreeningDownloads/AssessmentProtocols/Gazetted_General_Requirement_Assessment_Protocols.pdf
10	Animal Species Assessment	https://screening.environment.gov.za/ScreeningDownloads/AssessmentProtocols/Gazetted_General_Requirement_Assessment_Protocols.pdf

Results of the environmental sensitivity of the proposed area.

The following section represents the results of the screening for environmental sensitivity of the proposed footprint for relevant environmental themes associated with the project classification. It is the duty of the EAP to ensure that the environmental themes provided by the screening tool are comprehensive and complete for the project. Refer to the disclaimer.

MAP OF RELATIVE AGRICULTURE THEME SENSITIVITY

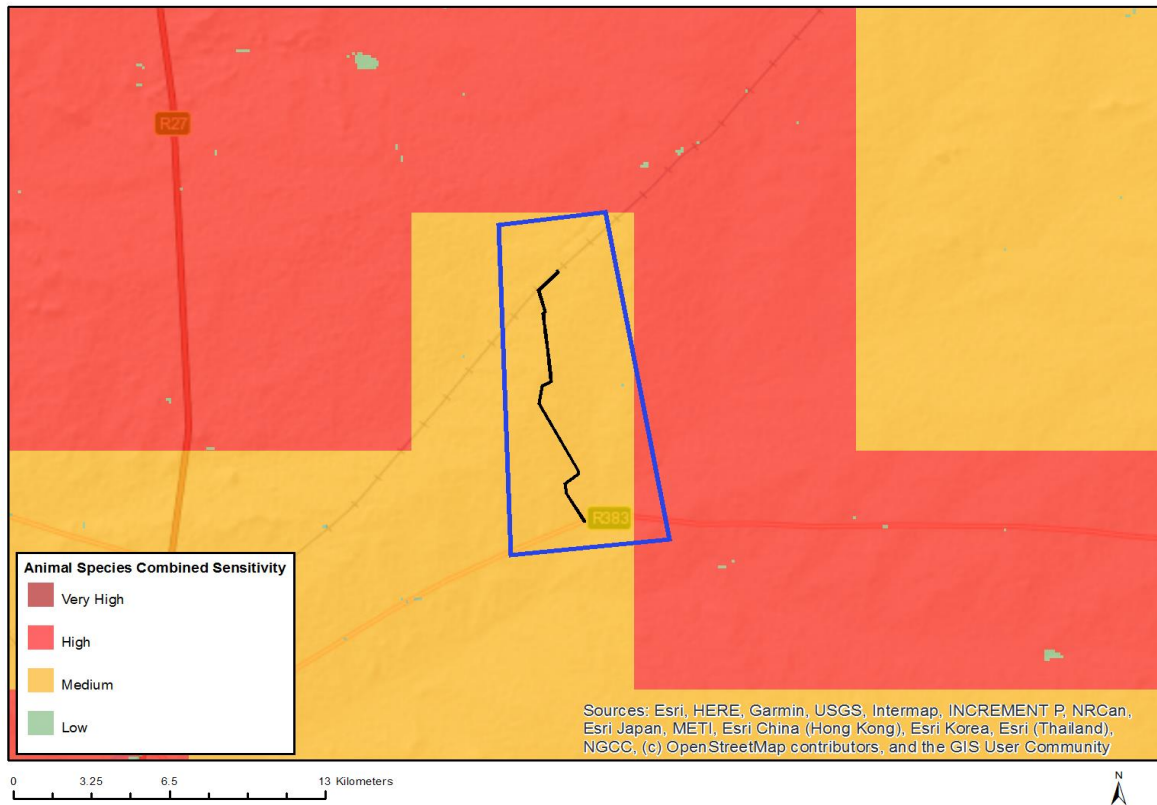


Very High sensitivity	High sensitivity	Medium sensitivity	Low sensitivity
		X	

Sensitivity Features:

Sensitivity	Feature(s)
Low	Land capability;01. Very low/02. Very low/03. Low-Very low/04. Low-Very low/05. Low
Medium	Land capability;06. Low-Moderate/07. Low-Moderate/08. Moderate

MAP OF RELATIVE ANIMAL SPECIES THEME SENSITIVITY

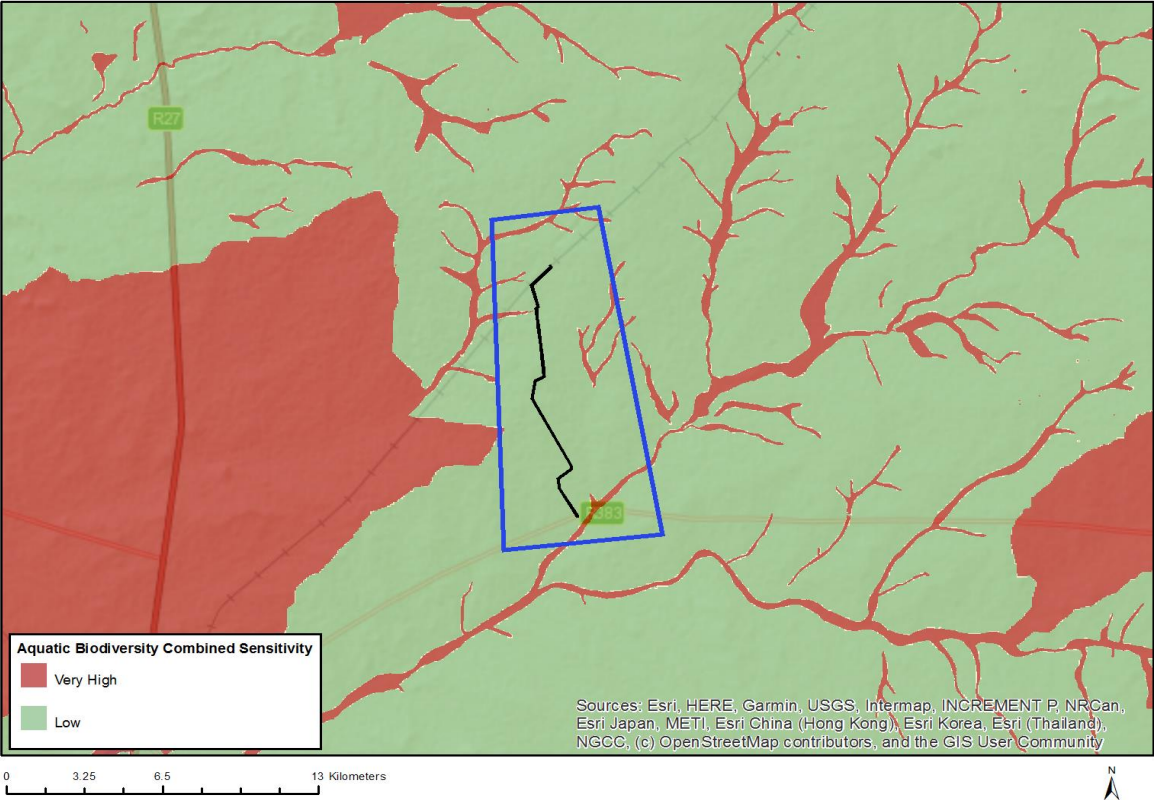


Very High sensitivity	High sensitivity	Medium sensitivity	Low sensitivity
		X	

Sensitivity Features:

Sensitivity	Feature(s)
Medium	Aves-Neotis ludwigii

MAP OF RELATIVE AQUATIC BIODIVERSITY THEME SENSITIVITY

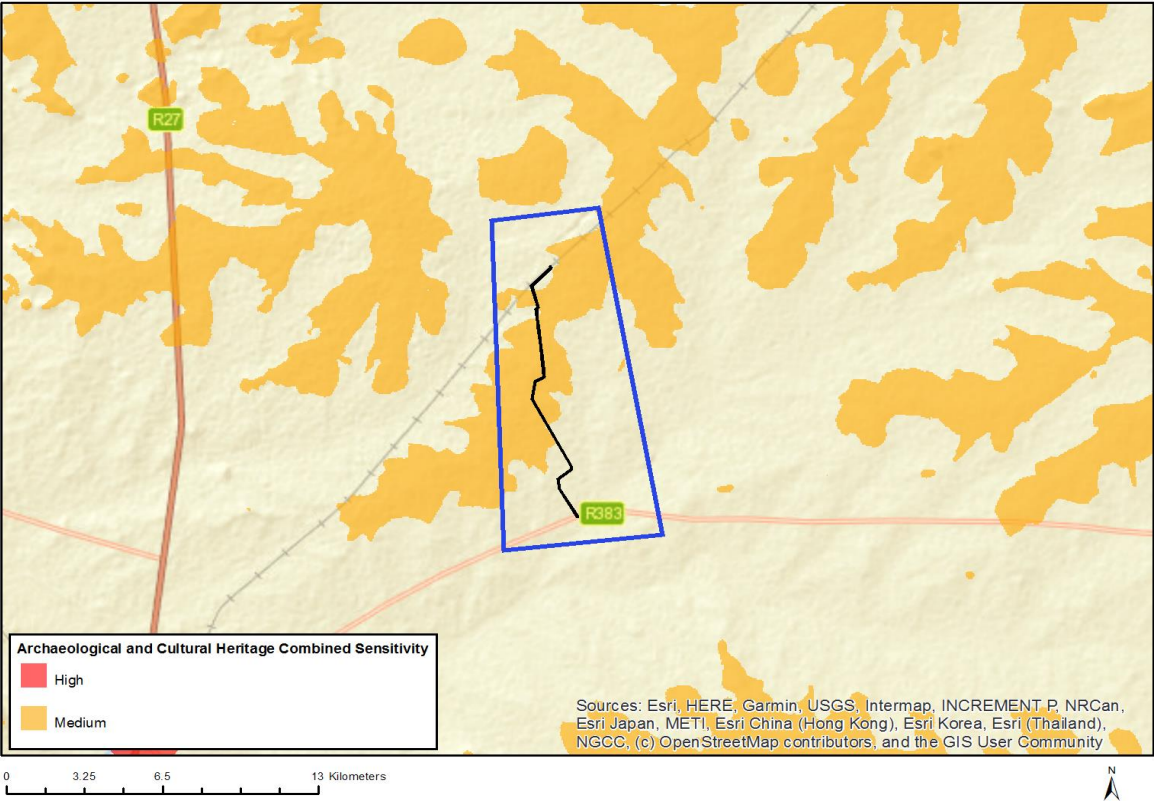


Very High sensitivity	High sensitivity	Medium sensitivity	Low sensitivity
			X

Sensitivity Features:

Sensitivity	Feature(s)
Low	Low sensitivity

MAP OF RELATIVE ARCHAEOLOGICAL AND CULTURAL HERITAGE THEME SENSITIVITY

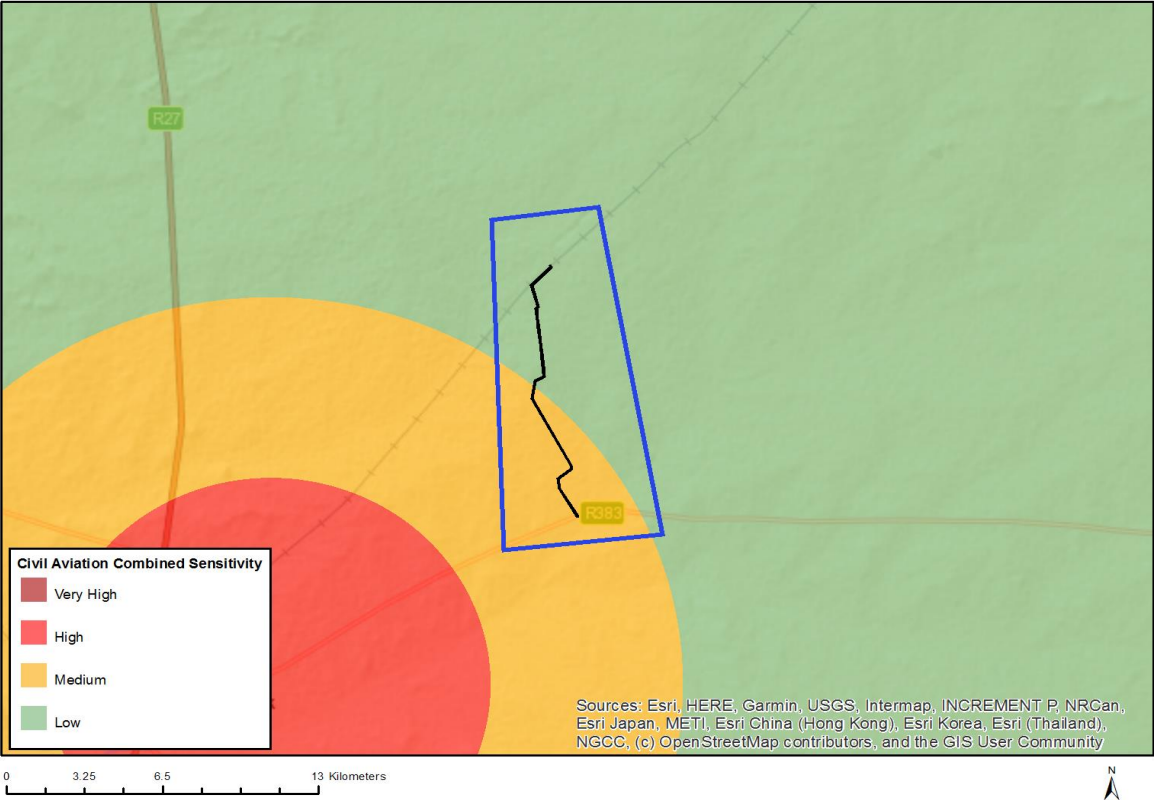


Very High sensitivity	High sensitivity	Medium sensitivity	Low sensitivity
		X	

Sensitivity Features:

Sensitivity	Feature(s)
Medium	Mountain or ridge

MAP OF RELATIVE CIVIL AVIATION THEME SENSITIVITY

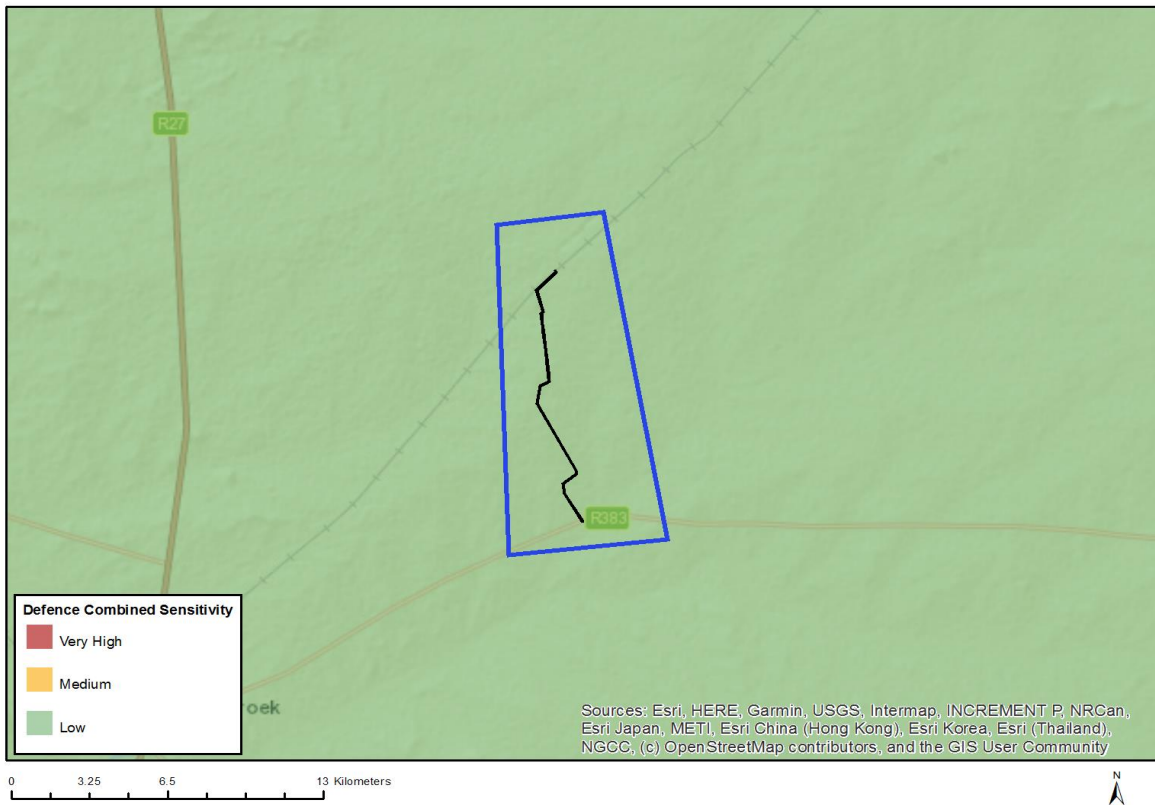


Very High sensitivity	High sensitivity	Medium sensitivity	Low sensitivity
		X	

Sensitivity Features:

Sensitivity	Feature(s)
Low	Low sensitivity
Medium	Between 8 and 15 km of other civil aviation aerodrome

MAP OF RELATIVE DEFENCE THEME SENSITIVITY

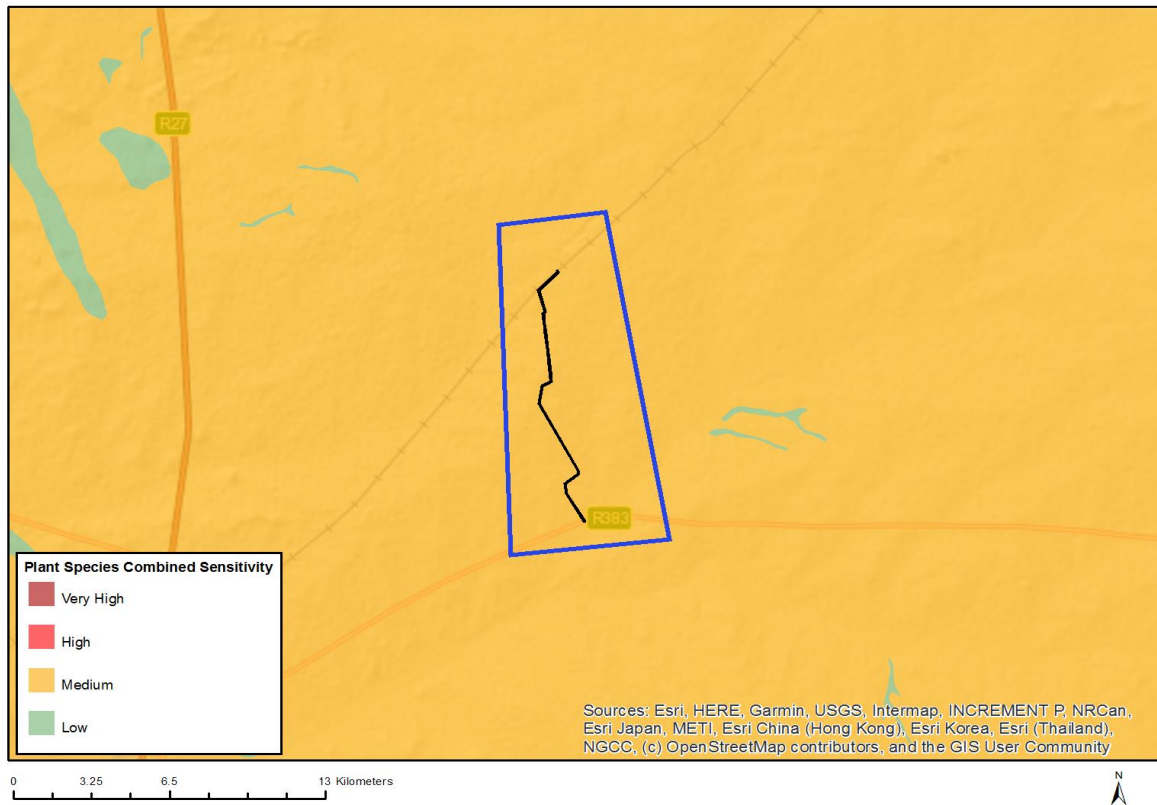


Very High sensitivity	High sensitivity	Medium sensitivity	Low sensitivity
			X

Sensitivity Features:

Sensitivity	Feature(s)
Low	Low sensitivity

MAP OF RELATIVE PLANT SPECIES THEME SENSITIVITY

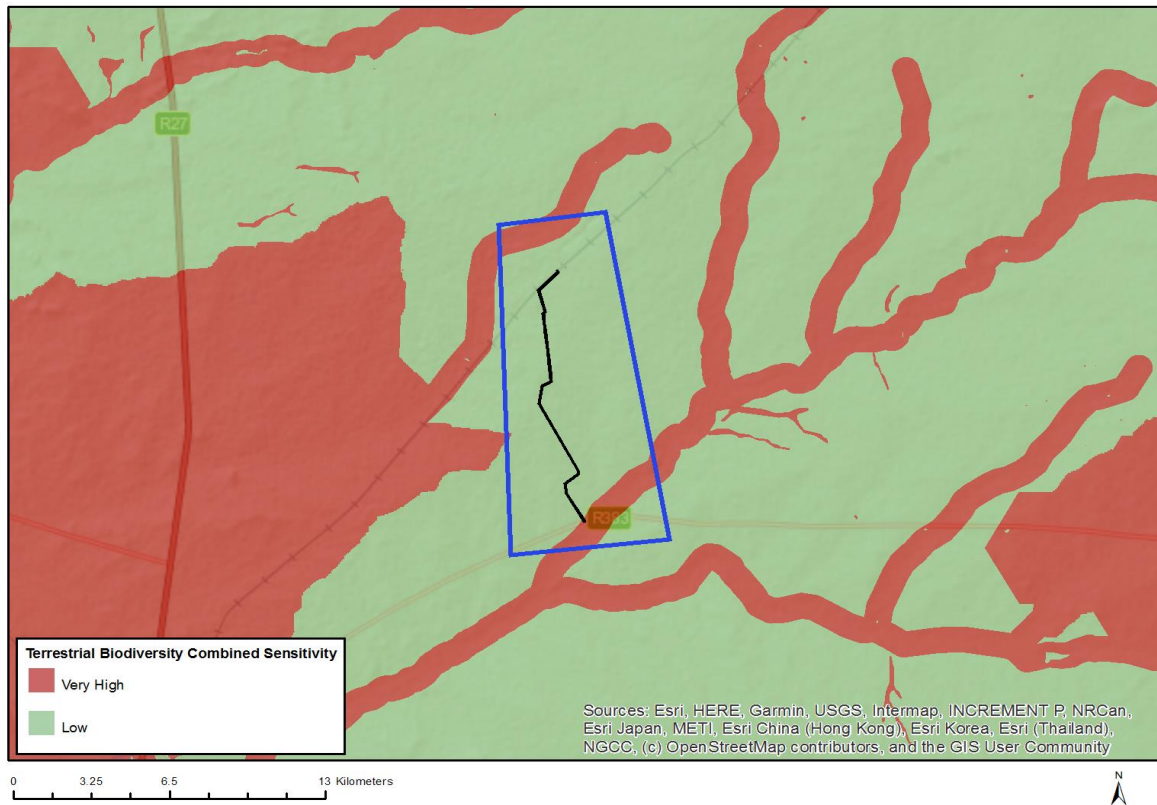


Very High sensitivity	High sensitivity	Medium sensitivity	Low sensitivity
		X	

Sensitivity Features:

Sensitivity	Feature(s)
Medium	Sensitive species 44

MAP OF RELATIVE TERRESTRIAL BIODIVERSITY THEME SENSITIVITY



Very High sensitivity	High sensitivity	Medium sensitivity	Low sensitivity
X			

Sensitivity Features:

Sensitivity	Feature(s)
Low	Low Sensitivity
Very High	Ecological Support Area