



Client ref.: 14/12/16/3/3/2/807/AM3  
WSP ref.: 41103843

23 August 2022

Dear Stakeholder

**Subject: NOTICE OF THE PROPOSED AMENDMENT OF THE ENVIRONMENTAL AUTHORISATION FOR THE 140MW KARREEBOSCH WIND ENERGY FACILITY (REF: 14/12/16/3/3/2/807/AM3) AND THE AMENDED ENVIRONMENTAL MANAGEMENT PROGRAMME AND FINAL LAYOUT FOR THE KARREEBOSCH WIND ENERGY FACILITY (REF: 14/12/16/3/3/2/807/AM3)**

**Notice is given in terms of Regulation 32 (GNR 326) of the Environmental Impact Assessment (EIA) Regulations, 2014 as amended published under section 24 and 24D of the National Environmental Management Act (No. 107 of 1998) (NEMA) (as amended) for submission of application for an Amendment in terms of a Part 2 Amendment Process described in Regulation 31.**

**In addition, notice is given of the proposed submission of the final layout and Environmental Management Programme (EMPr) amendment for the Karreebosch Wind Energy Facility (WEF) in terms of Condition 16 and 18 of the Environmental Authorisation (EA).**

#### **PART 2 AMENDMENT PROCESS**

Karreebosch Wind Farm RF (Pty) Ltd (the Applicant) applied for Environmental Authorisation (EA) for the proposed Karreebosch WEF in 2016. The Department of Environmental Affairs (DEA) (now known as the Department of Forestry, Fisheries and the Environment – DFFE) issued an EA on the 29 January 2016 (Ref No: 14/12/16/3/3/2/807) for the 140MW Karreebosch Wind Energy Facility (WEF). Amendments to this EA were issued on 10 June 2016 (Ref No: 14/12/16/3/3/2/807/AM1), 15 November 2018 (Ref No: 14/12/16/3/3/2/807/AM2) and 30 October 2019 (Ref No: 14/12/16/3/3/2/807/AM3). The proponent, Karreebosch Wind Farm RF (Pty) Ltd (Karreebosch), now wishes to further amend the above-mentioned EA to undertake substantive amendments which includes increasing the hub height and rotor diameter to up to 140 m and 170 m respectively. Other non-substantive amendments include increasing the generation capacity of the individual turbines from up to 5.5MW to up to 7.5MW, as well as administrative amendments (the entire scope of the amendment request is detailed in the amendment report). None of the amendments trigger new listed activities in terms of GNR 327, 325 and 324 of the EIA Regulations, 2014 (as amended). However, the proposed amendments will result in a change in scope of the valid EA. As such, a Regulation 31 Amendment Process in terms the EIA Regulations (GNR 326) of the EIA Regulations, 2014 as amended is applicable. The authorised Karreebosch WEF falls within the Karoo Hoogland Local Municipality, Namakwa District Municipality within the Northern Cape Province as well as the Laingsburg Local Municipality, Central Karoo District Municipality and the Witzenberg Local Municipality, Cape Winelands District Municipality within the Western Cape Province. The project is also situated within the

Building C  
Knightsbridge, 33 Sloane Street  
Bryanston, 2191  
South Africa

T: +27 11 361 1392  
F: +27 11 361 1381  
wsp.com

Komsberg Renewable Energy Development Zone (REDZ) promulgated in GNR 114 of 2018, and includes the following properties:

- Farm Roode Wal No. 187
- Farm Appels Fontein No. 201
- Portion 1 of Farm Ek Kraal No. 199
- Portion 2 (Nuwe Kraal) of Farm Ek Kraal No. 199
- Portion 1 of Farm Klipbanks Fontein No. 198
- Remainder of Farm Klipbanks Fontein No. 198
- Remainder of Farm Wilgebosch Rivier No. 188 Farm Rietfontein No. 197
- Remainder of Farm Kareebosch No. 200
- Portion 1 of Farm Karreebosch No. 200
- Farm Oude Huis No. 195
- Portion 1 of Farm Karree Kloof No. 196
- Remainder of Farm Brandvalley No. 75

### **EMPR AMENDMENT AND SUBMISSION OF FINAL LAYOUT**

The EMPr submitted as part of the original 2015 Environmental Impact Assessment (EIA) Report for the Karreebosch WEF was not approved. In terms of Condition 18 of the authorised EA issued in 2016 (Ref No: 14/12/16/3/3/2/807, read with subsequent amendments 14/12/16/3/3/2/807/AM1, 14/12/16/3/3/2/807/AM2 and 14/12/16/3/3/2/807/AM3), the EMPr is to be amended to include measures against possible impacts on SALT and SAAO and as dictated by the final site layout map, micro-siting and the provisions of the EA. The amended EMPr and Final Layout are to be made available to interested and affected parties (I&APs) for comment.

### **REGISTRATION**

WSP Group Africa (Pty) Ltd (WSP) has been appointed as the independent and suitably qualified Environmental Assessment Practitioner (EAP) by Karreebosch, to manage and undertake the Part 2 Amendment process and to amend the EMPr. Parties wishing to formally register as interested and affected parties in order to receive more information and/ or raise their comment(s) on the project amendments, are requested to forward their full contact details to the EAP and disclose their direct business, financial, personal or other interest in the project. Any comments on the proposed project may be submitted to the EAP via the details provided below. Registered interested and affected parties will be forwarded all future project related correspondence.

### **DRAFT AMENDMENT REPORT AND EMPR REVIEW PERIOD**

The Draft Amendment Report and amended EMPr and Final Layout are available from WSP on request and at the venues below for public review and comment for 30 days from **19 August 2022 – 19 September 2022:**

Area	Venue	Street Address	Contact No
Laingsburg	Laingsburg Public Library	Van Riebeeck Street, Laingsburg,	Tel: 023 551 1019
Sutherland	Sutherland Public Library	Sarel Celliers Street, Sutherland, 6920	Tel: 023 571 1429
G7 Website	<a href="https://ppp.g7energies.com/KGRID6v78!">https://ppp.g7energies.com/KGRID6v78!</a>		
Website Instructions	<ul style="list-style-type: none"> <li>• Create an account here <a href="https://ppp.g7energies.com">https://ppp.g7energies.com</a></li> <li>• Login and use the specific pathway above to view and/or download the documents</li> </ul>		



Kindly ensure that all comments on the proposed project or requests to be registered as an Interested and Affected Party are submitted to the contact details provided below, by **19 September 2022**. Should you have any queries/comments, please do not hesitate to contact the EAP.

We look forward to your participation in this process and your meaningful contributions.

**WSP Group Africa (Pty) Ltd**  
**Attention: Megan Govender**

(T) 011 361 1300

(F) 011 361 1301

(E) [Megan.Govender@wsp.com](mailto:Megan.Govender@wsp.com)

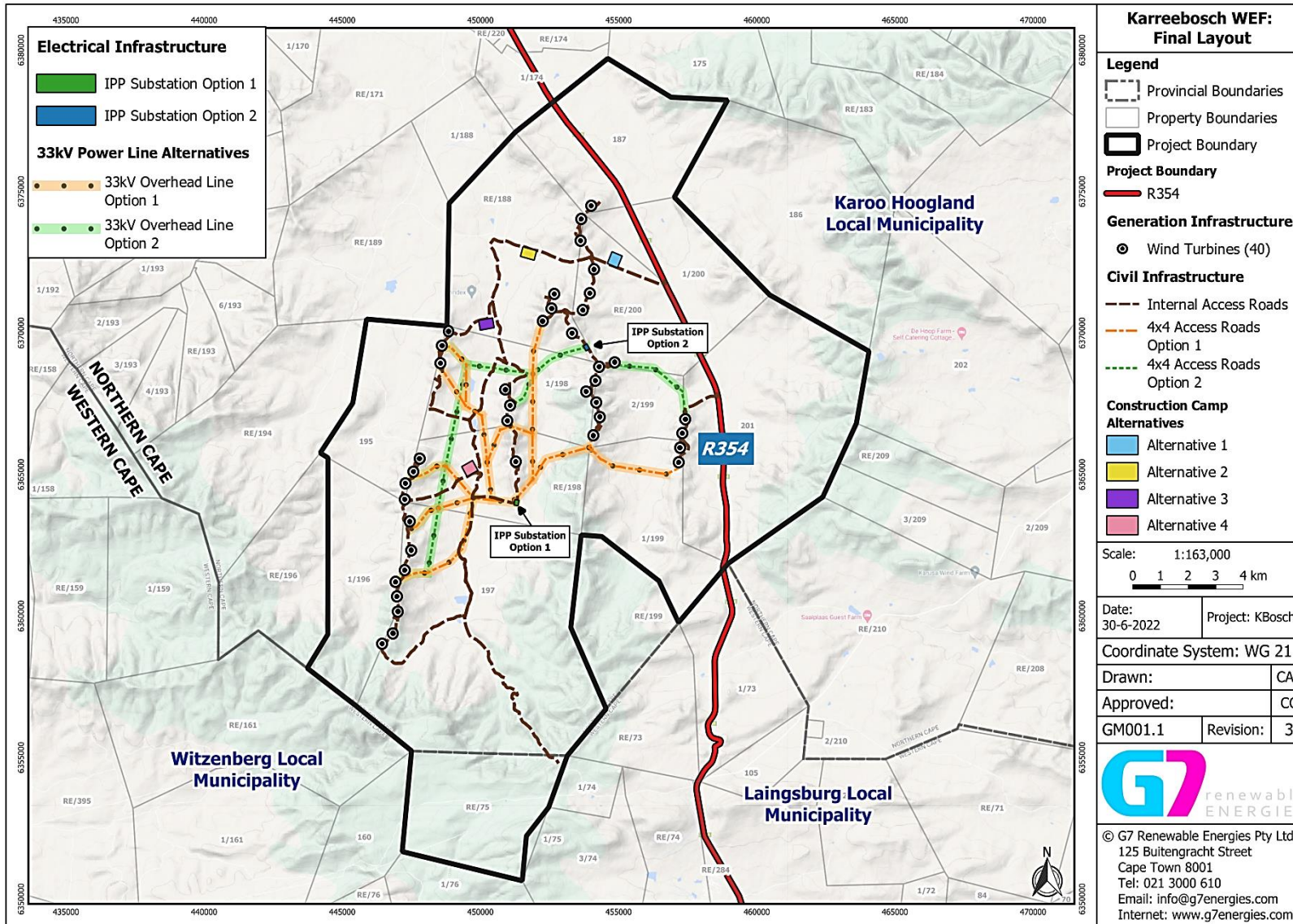


Figure 1: Final Layout of the Karreebosch WEF



WSP ref.: 41103843

23 Augustus 2022

Geagte Belanghebbende

**Subject: BASIESE ASSESSERINGSPROSES: KENNISGEWING VAN DIE VOORGESTELDE ONTWIKKELING VAN DIE KARREEBOSCH 132KV BOKRAGLYN EN SUBSTASIE BINNE DIE KAROO HOOGLAND PLAASLIKE MUNISIPALITEIT EN DIE LAINGSBURG PLAASLIKE MUNISIPALITEIT IN DIE NOORDKAAP PROVINSIEKAP.**

**Kennis word gegee ingevolge Regulasie 32 (GNR 326) van die Omgewingsimpakbepaling (OIE) Regulasies, 2014 soos gewysig gepubliseer kragtens artikel 24 en 24D van die Wet op Nasionale Omgewingsbestuur (No. 107 van 1998) (NEMA) (soos gewysig) ) vir die indiening van aansoeke om 'n wysiging ingevolge 'n Deel 2-wysigingsproses wat in Regulasie 31 beskryf word.**

**Boonop word kennis gegee van die voorgestelde indiening van die finale uitleg en Omgewingsbestuursprogram (EMPr) wysiging vir die Karreebosch Windenergiefasiliteit (WEF) in terme van Voorwaarde 16 en 18 van die Omgewingsmagtiging (EA)**

## **DEEL 2 WYSIGINGSPROSES**

Karreebosch Wind Farm RF (Edms) Bpk (die Aansoeker) het in 2016 aansoek gedoen om Omgewingsmagtiging (EA) vir die voorgestelde Karreebosch WEF. Die Departement van Omgewingsake (DEA) (nou bekend as die Departement van Bosbou, Visserye en die Omgewing – DFFE ) het 'n EA op 29 Januarie 2016 uitgereik (Verw. No: 14/12/16/3/3/2/807) vir die 140MW Karreebosch Windenergiefasiliteit (WEF). Wysigings aan hierdie EA is uitgereik op 10 Junie 2016 (Verw. No: 14/12/16/3/3/2/807/AM1), 15 November 2018 (Verw. No: 14/12/16/3/3/2/807/AM2) en 30 Oktober 2019 (Verw. No: 14/12/16/3/3/2/807/AM3). Die proponent, Karreebosch Wind Farm RF (Edms) Bpk (Karreebosch), wil nou die bogenoemde EA verder wysig om wesenlike wysigings aan te neem wat insluit die verhoging van die naafhoogte en rotorsnee tot onderskeidelik tot 140 m en 170 m. Ander nie-substantiewe wysigings sluit in die verhoging van die opwekkingskapasiteit van die individuele turbines van tot 5,5MW tot tot 7,5MW, sowel as administratiewe wysigings (die hele omvang van die wysigingsversoek word in die wysigingsverslag uiteengesit). Geen van die wysigings veroorsaak nuwe gelyste aktiwiteite ingevolge GNR 327, 325 en 324 van die OIB-regulasies, 2014 (soos gewysig) nie. Die voorgestelde wysigings sal egter 'n verandering in omvang van die geldige EA tot gevolg hê. As sodanig is 'n Regulasie 31-wysigingsproses ingevolge die OIB-regulasies (GNR 326) van die OIB-regulasies, 2014 soos gewysig van toepassing. Die gemagtigde Karreebosch WEF val binne die Karoo Hoogland Plaaslike Munisipaliteit, Namakwa Distriksmunisipaliteit binne die Noord-Kaap Provinsie sowel as die Laingsburg Plaaslike Munisipaliteit, Sentraal Karoo Distriksmunisipaliteit en die Witzenberg Plaaslike Munisipaliteit, Kaapse Wynland Distriksmunisipaliteit binne die Wes-Kaap Provinsie. Die projek is ook geleë binne die Komsberg Hernubare Energie-ontwikkelingsone (REDZ) wat in GNR 114 van 2018 afgekondig is, en sluit die volgende eiendomme in:

- Plaas Roode Wal nr 187
- Plaas Appels Fontein No 201
- Gedeelte 1 van Plaas Ek Kraal No 199
- Gedeelte 2 (Nuwe Kraal) van Plaas Ek Kraal nr 199
- Gedeelte 1 van Plaas Klipbanks Fontein No 198

The Pavilion, 1st Floor  
Cnr Portswood and Beach Road, Waterfront  
Cape Town, 8001  
South Africa

T: +27 21 481 8700  
F: +086 606 7121  
wsp.com



- Restant van Plaas Klipbanks Fontein No 198
- Restant van Plaas Wilgebosch Rivier No 188
- Plaas Rietfontein nr 197
- Restant van Plaas Kareebosch nr 200
- Gedeelte 1 van Plaas Karreebosch nr 200
- Plaas Oude Huis nr 195
- Gedeelte 1 van Plaas Karree Kloof No 196
- Restant van Plaas Brandvallei nr 75

### EMPR WYSIGING EN INDIENING VAN FINALE UITLEG

Die OBPr wat as deel van die oorspronklike 2015 Omgewingsimpakbepaling (OIB)-verslag vir die Karreebosch WEF ingedien is, is nie goedgekeur nie. In terme van voorwaarde 18 van die gemagtigde EA uitgereik in 2016 (Verw. No: 14/12/16/3/3/2/807, gelees met daaropvolgende wysigings 14/12/16/3/3/2/807/AM1, 14/12/16/3/3/2/807/AM2 en 14/12/16/3/3/2/807/AM3), moet die OBPr gewysig word om maatreëls in te sluit teen moontlike impakte op SOUT en SAAO en soos gedikteer deur die finale terreinuitlegkaart, mikro-sitplek en die bepalings van die EA. Die gewysigde OBPr en Finale uitleg moet aan belanghebbende en geaffekteerde partye (B&GP's) beskikbaar gestel word vir kommentaar.

### REGISTRASIE

WSP Group Africa (Edms) Bpk (WSP) is deur Karreebosch as die onafhanklike en toepaslik gekwalifiseerde Omgewingsbeoordelingspraktisyn (EAP) aangestel om die Deel 2 Wysigingsproses te bestuur en te onderneem en om die OBPr te wysig. Partye wat formeel as belanghebbende en geaffekteerde partye wil registreer om meer inligting te ontvang en/of hul kommentaar(s) op die projekwysigings te lewer, word versoek om hul volledige kontakbesonderhede aan die WHP te stuur en hul direkte besigheid, finansiële, persoonlike of ander belangstelling in die projek. Enige kommentaar oor die voorgestelde projek kan by die WHP ingedien word via die besonderhede hieronder verskaf. Geregistreerde belangstellendes en geaffekteerde partye sal alle toekomstige projekverwante korrespondensie aangestuur word.

### KONSEP-WYSIGINGSVERSLAG EN EMPR-OORSIGTYDPERK

Die Konsepwysigingsverslag en gewysigde EMPR en Finale uitleg is op aanvraag by WSP en by die lokale hieronder beskikbaar vir publieke hersiening en kommentaar vir 30 dae vanaf **19 Augustus 2022** – **19 September 2022**:

Area	Venue	Straatadres	Kontak No
Laingsburg	Laingsburg Publieke biblioteek	Van Riebeeck Straat, Laingsburg,	Tel: 023 551 1019
Sutherland	Sutherland Publieke biblioteek	Sarel Celliers Straat, Sutherland, 6920	Tel: 023 571 1429
G7 Webwerf	<a href="https://ppp.g7energies.com/KGRID6v78!">https://ppp.g7energies.com/KGRID6v78!</a>		
Webwerf-instruksies	<ul style="list-style-type: none"> <li>• Skep 'n rekening hier <a href="https://ppp.g7energies.com">https://ppp.g7energies.com</a></li> <li>• Teken in en gebruik die spesifieke pad hierbo om die dokumente te bekyk en/of af te laai</li> </ul>		



Maak asseblief seker dat alle kommentaar oor die voorgestelde projek of versoeke om geregistreer te word as 'n Belanghebbende en Geaffekteerde Party ingedien word by die kontakbesonderhede hieronder verskaf, teen **19 September 2022**. Indien u enige navrae/opmerkings het, moet asseblief nie huiwer om die WHP te kontak nie.

Ons sien uit na jou deelname aan hierdie proses en jou betekenisvolle bydraes.

**WSP Group Africa (Edms.) Bpk**

**Aandag: Megan Govender**

(T) 011 361 1300

(F) 011 361 1301

(E) [Megan.Govender@wsp.com](mailto:Megan.Govender@wsp.com)

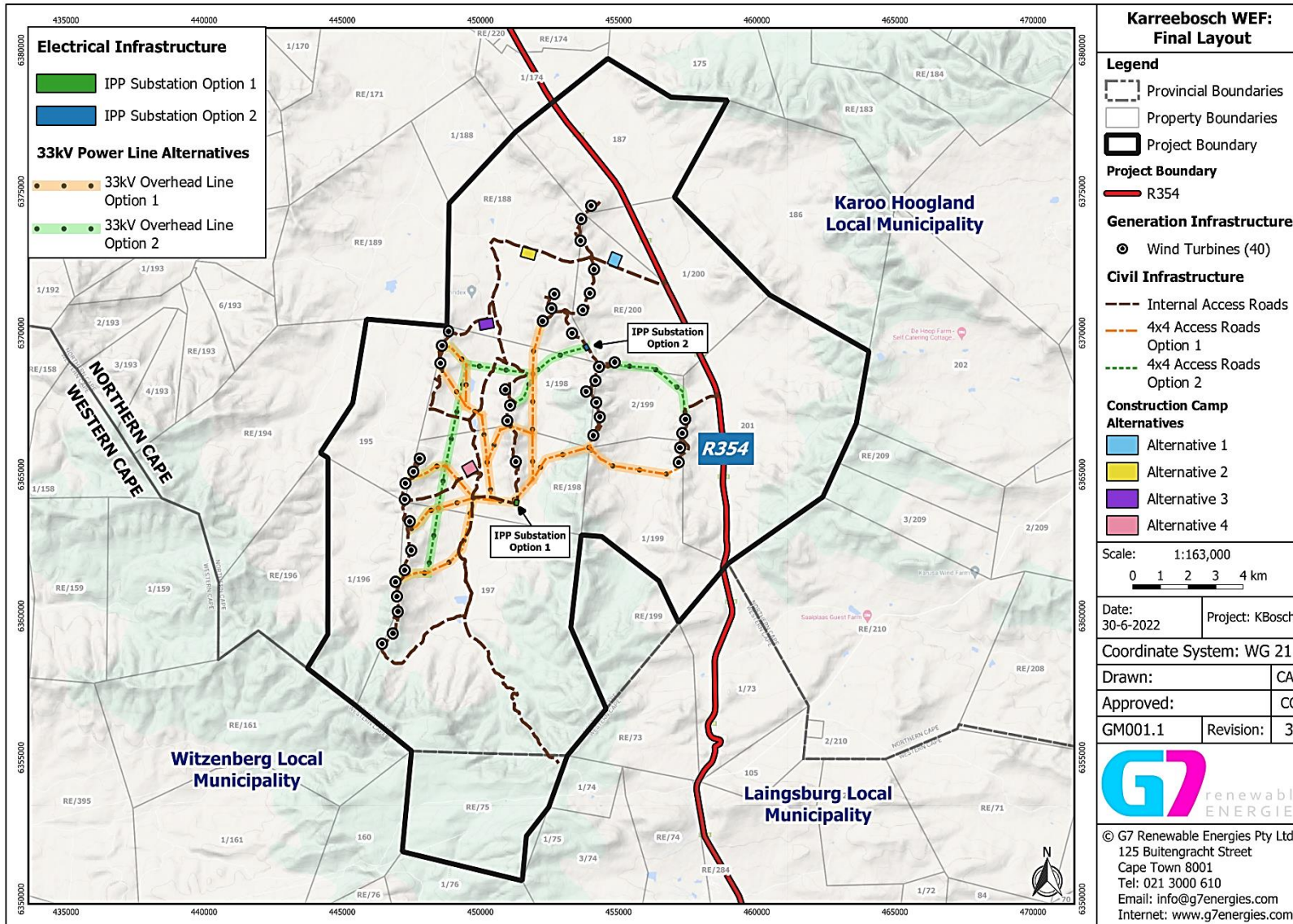


Figure 1: Final Layout of the Karreebosch WEF