



Emvelo Quality and Environmental consultant (PTY) Ltd
Promenade Building, 1st Floor, Unit D2, 24 Lira Link CBD,
Richards Bay, 3900. P.O. Box 101672, Meerensee, 3901

BACKGROUND INFORMATION DOCUMENT

**THE PROPOSED DEVELOPMENT OF THE
NDUMO SHOPPING COMPLEX WITH A PETROL
FILLING STATION, A TAXI RANK AND MARKET
STALLS IN NDUMO TOWN, WITHIN THE JOZINI
LOCAL MUNICIPALITY OF UMKHANYAKUDE
DISTRICT MUNICIPALITY, KWAZULU-NATAL.**

MARCH 2021

Prepared by:

**Emvelo Quality and Environmental
Consultant (PTY) Ltd**

On Behalf of:

**IThala Development Finance Corporation Pty
Ltd**



1. INTRODUCTION.

The IThala Development Finance Corporation Pty Ltd proposes to develop the Ndumo Shopping Complex with a petrol filling station, a taxi rank and market stalls in Ndumo town, Within the Jozini Local Municipality of Umkhanyakude District Municipality, KwaZulu-Natal Province.

Therefore, an environmental impact assessment (EIA) has commenced, assisting the developer in identifying all potential adverse environmental consequences of the project, their extent, significance and to ensure that the environmental management requirements are adequately implemented.

The purpose of this Background Information Document (BID) is to provide you, as an Interested or Affected Party (I&AP), with a brief description of the EIA process to be undertaken and to obtain comments and contributions from I&APs with regards to the potential impacts to the environment by the proposed project.

2. PROJECT DESCRIPTION

The IThala Development Finance Corporation Pty Ltd proposes to develop the Ndumo Shopping Complex, with a petrol filling station, a taxi rank and market stalls in Ndumo town, Within the Jozini Local

Municipality of Umkhanyakude District Municipality, KwaZulu-Natal Province.

The proposed development entails the clearance of 2.7 ha of indigenous vegetation for the construction of the following:

- A shopping centre (3 levels) and supporting services,
- A fuel station of 60 000 litres underground tanks,
- Roads,
- A Taxi rank and Market stalls of 3600 sqm.

The total size of the proposed property is 6.4 ha, and the proposed Development Footprint is approximately 2.7 ha. The site is located at ERF: 16638, Ndumu B.

3. PROJECT LOCATION

The site co-ordinates are as follows:

Lat/Long	Degrees	Minutes	Seconds
South	26°	55'	23.48"
East	32°	14'	58.78"

The proposed site is located in the Ndumo rural town, ward 16, within the jurisdiction of the Jozini Local Municipality. It is registered under the ERF 16638, Ndumu B, which is an area that has not been designated for any specific zone at this stage.

4. SITE SENSITIVITY

The proposed site is located on an undeveloped area characterized by indigenous vegetation. As per the Online Web based screening tool the site has a High Agricultural theme sensitivity. However, an initial site visit indicated that the area does not have any agricultural activities around.

From the exact proposed site development, within a fair proximity there is a clinic, residential development of flats, library, and commercial uses of existing and shops under construction.

The preliminary site identification and audit conducted by Inzuzo Ye-Sizwe Development Consultants, suggests that, there are no major limitations for the proposed development.

5. WHAT IS AN ENVIRONMENTAL IMPACT ASSESSMENT?

An EIA is an effective planning and decision-making tool, which allows for the identification of potential adverse environmental consequences of a proposed project, and its management through the planning process.

In terms of the National Environmental Management Act, 1998 (Act No.107 of 1998), as read with the Environmental

Impact Assessment (EIA) Regulations of 2014 as amended in 2017, an Environmental Authorization must be obtained from the relevant decision-making authority, the Department of Economic Development, Tourism and Environmental Affairs (DEDTEA), prior to the commencement of any of the listed activities that may result in potential negative impacts on the environment. Thus, an environmental impact assessment is required. A Basic assessment that includes the public participation process will be performed.

6. ENVIRONMENTAL IMPACT ASSESSMENT PROCESS

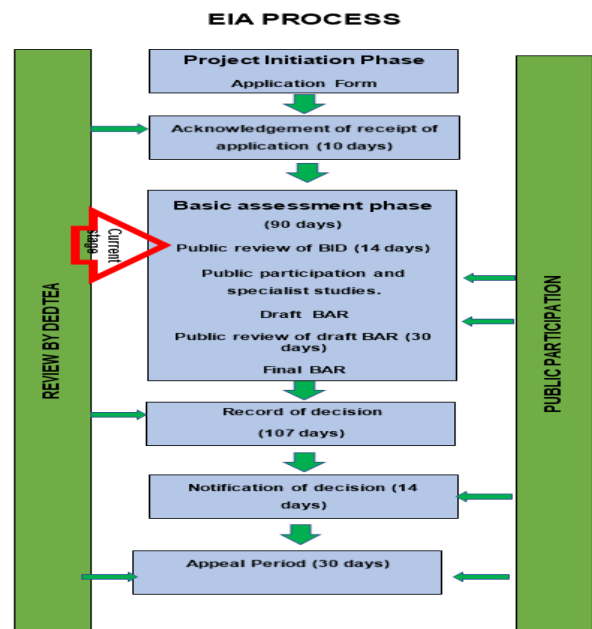


Figure 1: EIA process

In terms of the Environmental Impact Assessment (EIA) regulations, an

independent Environmental Assessment Practitioner must be appointed to conduct the EIA. Therefore, Emvelo Consultant has been appointed to conduct the EIA. Emvelo will identify and assess the potential environmental impacts associated with the proposed activity by conducting an objective and independent EIA in which all the relevant information and opinions of Interested and Affected Parties (IAPs) will be collected and passed on to the Department of Economic Development Tourism and Environmental Affairs (EDTEA). In this way, an informed decision-making process can take place.

7. LISTED ACTIVITIES TRIGGERED BY THIS PROJECT

The proposed project triggers the following listed activities of the Listing Notices;

Table 1: Listed Activities

LISTING NOTICE	ACTIVITY	DESCRIPTION OF ACTIVITY
1	27	The clearance of an area of 1 Hectares or more, but less than 20 hectares of indigenous vegetation, except where such clearance of indigenous vegetation is required for – i). The undertaking of linear

LISTING NOTICE	ACTIVITY	DESCRIPTION OF ACTIVITY
		activity; or ii). Maintenance purposes undertaken in accordance with a maintenance management plan.
3	10	The development and related operation of facilities or infrastructure for the storage, or storage and handling of a dangerous good, where such storage occurs in containers with a combined capacity of 30 but not exceeding 80 cubic metres. xiii. Outside urban areas: (aa) Areas within 10 kilometres from national parks or world heritage sites or 5 kilometres from any terrestrial protected area identified in terms of NEMPAA or from the core areas of a biosphere reserve;

8. WHAT IS PUBLIC PARTICIPATION?

Public participation is the process that promotes information sharing, consultation, active involvement amongst stakeholders and all interested and affected parties.

During the Public Participation Process, input from the proponent, technical experts, government authorities and the public will be gathered to result in a better understanding of the project for all involved thus ensuring an informed decision-making throughout the process.

I&APs may forward their written comments along with their contact details within 14 days from receiving the document to; **Phumzile Lembede**.

Postal address: P. O. Box 101672, Meerensee,3901;

Tel: 035 789 0632;

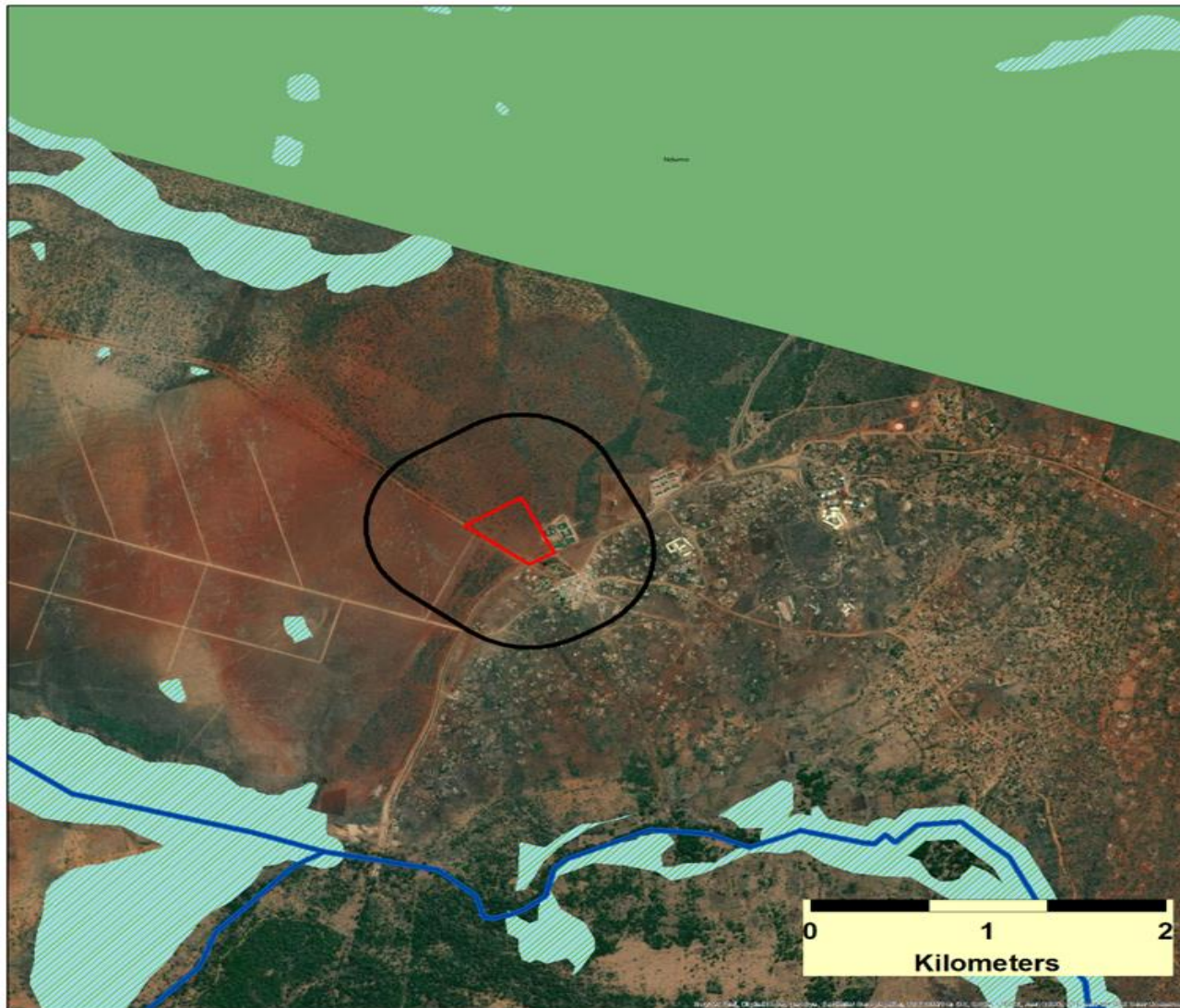
Fax: 086 577 5220,

Email: info@emveloconsultants.co.za.

9. REGISTRATION OF INTERESTED AND AFFECTED PARTIES.

Any person, company, authority or other entity that might be directly or indirectly affected by the proposed activity is invited to register as an I&AP, in order to assist the EAP in identifying possible environmental, economic and social impacts of the proposed development and to make suggestions for mitigations. These comments will be included as part of the Basic assessment report which will be submitted to the Department of Economic Development, Tourism and Environmental Affairs (EDTEA) for consideration.

APPENDIX A
(LOCALITY MAP)

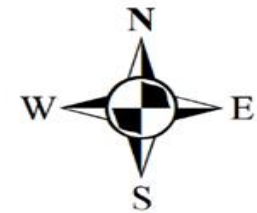


NDUMO COMPLEX

LOCALITY MAP

Legend

-  NFEPA Rivers
-  Proposed Site
-  Proposed Site 500m Buffer
-  NFEPA Wetlands
-  CBA Optimal
-  CBA Irreplaceable
-  Combined Protected Areas



Datum : WGS 84
Date : 24/03/2020
Drawn By : Selby Mabuza



**APPENDIX B
(SITE IMAGES)**



