



38 Jacaranda Street, Arboretum, Richards Bay
P.O. Box 101672, Meerensee, 3901
Telephone: 035 789 0632 / 078 284 9332 Fax: 086 535 8846
Website: www.emveloconsultants.co.za E-mail: info@emveloconsultants.co.za

Integrity | Honesty | Excellence



BACKGROUND INFORMATION DOCUMENT

THE PROPOSED EXPANSION OF NJOJO FARM
WITHIN THE BIG 5 HLABISA LOCAL
MUNICIPALITY, UMKHANYAKUDE DISTRICT,
KWAZULU-NATAL.

APRIL 2021

Prepared by:

**Emvelo Quality and Environmental
Consultant (PTY) Ltd**

Prepared for

NJOJO FARM (PTY) Ltd



1. INTRODUCTION.

The Njojo farm proposes to expand the mixed-use farm located within the Big 5 Hlabisa Local Municipality, uMkhanyakude District, Kwazulu-Natal.

Therefore, an environmental impact assessment (EIA) has commenced, assisting the developer in identifying all potential adverse environmental consequences of the project, their extent, significance and to ensure that the environmental management requirements are adequately implemented.

The purpose of this Background Information Document (BID) is to provide you, as an Interested or Affected Party (I&AP), with a brief description of the EIA process to be undertaken and to obtain comments and contributions from I&APs with regards to the potential impacts to the environment by the proposed project.

2. PROJECT DESCRIPTION

The Njojo farm proposes to expand the mixed-use farm located within the Big 5 Hlabisa Local Municipality, uMkhanyakude District, Kwazulu-Natal.

The farm currently runs a piggery of 231 pigs raised in 5 pigstys (1200 m²), excluding weaners, a 3000-broiler production raised in

4 broiler houses (285.05 m²), 178 cattles in 2 holding pens (3000 m²) and have two (2) feed storage sheds (496.32 m²). The farm has an existing water use license, and a municipal supply of electricity, which both will be able to accommodate the proposed expansion.

The proposed farm expansion entails;

- The addition of 8 pigstys (2880 m²), and to increase the number of pigs by 269 to a total of 500 pigs.
- The addition of 5 broiler houses and to increase the number of chickens by 6000, and to a total of 9000 broilers.
- The addition of 2 cattle holding pen (3000 m²), and to increase the number of cattle to 500 units.
- The development of an abattoir (360 m²) that will have a product throughput of red meat of 8 units per day.

Other activities on the farm include the cultivation of crops (maize meal, beans, spinach, and cabbages) for subsistence use. The proposed expansion footprint is 0.644ha and is located at Lot H 29, ERF: 13268, Bushland Reserve, in Mtubatuba.

3. PROJECT LOCATION

The site co-ordinates are as follows:

Lat/Long	Degrees	Minutes	Seconds
South	28°	6'	16.45"
East	32°	15'	54.58"

4. WHAT IS A ENVIRONMENTAL IMPACT ASSESSMENT?

An EIA is an effective planning and decision-making tool, which allows for the identification of potential adverse environmental consequences of a proposed project, and its management through the planning process.

In terms of the National Environmental Management Act, 1998 (Act No.107 of 1998), as read with the Environmental Impact Assessment (EIA) Regulations of 2014 as amended in 2017, an Environmental Authorization must be obtained from the relevant decision-making authority, the Department of Economic Development, Tourism and Environmental Affairs (DEDTEA), prior to the commencement of any of the listed activities that may result in potential negative impacts on the environment. Thus, an environmental impact assessment is required. A Basic assessment that includes the public participation process will be performed.

5. ENVIRONMENTAL IMPACT ASSESSMENT PROCESS

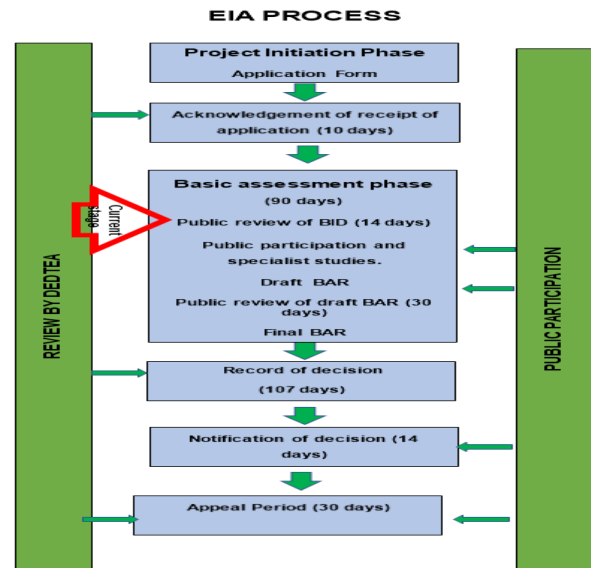


Figure 1: EIA process

In terms of the Environmental Impact Assessment (EIA) regulations, an independent Environmental Assessment Practitioner must be appointed to conduct the EIA. Therefore, Emvelo Consultant has been appointed to conduct the EIA. Emvelo will identify and assess the potential environmental impacts associated with the proposed activity by conducting an objective and independent EIA in which all the relevant information and opinions of Interested and Affected Parties (IAPs) will be collected and passed on to the Department of Economic Development Tourism and Environmental Affairs (EDTEA). In this way, an informed decision-making process can take place.

6. LISTED ACTIVITIES TRIGGERED BY THIS PROJECT

The proposed project triggers the following listed activities of the Listing Notices;

Table 1: Listed Activities

LISTING NOTICE	ACTIVITY	DESCRIPTION OF ACTIVITY
1	3	The development and related operation of facilities or infrastructure for the slaughter of animals with a [product throughput of] - (ii) product throughput of reptiles, game and red meat exceeding 6 units per day;
1	39	The expansion and related operation of facilities for the concentration of animals [for the purpose of commercial production] in densities that will exceed – (ii) 8 square meters per small stock unit, where the expansion will constitute more than; (b) 250 additional pigs,

LISTING NOTICE	ACTIVITY	DESCRIPTION OF ACTIVITY
		excluding piglets that are not yet weaned;
1	40	The expansion and related operation of facilities for the concentration of poultry, excluding chicks younger than 20 days, where the capacity of the facility will be increased by – (ii) more than 5000 poultry per facility situated outside an urban area.

7. WHAT IS PUBLIC PARTICIPATION?

Public participation is the process that promotes information sharing, consultation, active involvement amongst stakeholders and all interested and affected parties.

During the Public Participation Process, input from the proponent, technical experts, government authorities and the public will be gathered to result in a better understanding of the project for all involved thus ensuring an informed decision-making throughout the process.

8. REGISTRATION OF INTERESTED AND AFFECTED PARTIES.

Any person, company, authority or other entity that might be directly or indirectly affected by the proposed activity is invited to register as an I&AP, in order to assist the EAP in identifying possible environmental,

economic and social impacts of the proposed development and to make suggestions for mitigations. These comments will be included as part of the Basic assessment report which will be submitted to the Department of Economic Development, Tourism and Environmental Affairs (EDTEA) for consideration.

I&APs may forward their written comments along with their contact details within 14 days from receiving the document to; **Phumzile Lembede**.

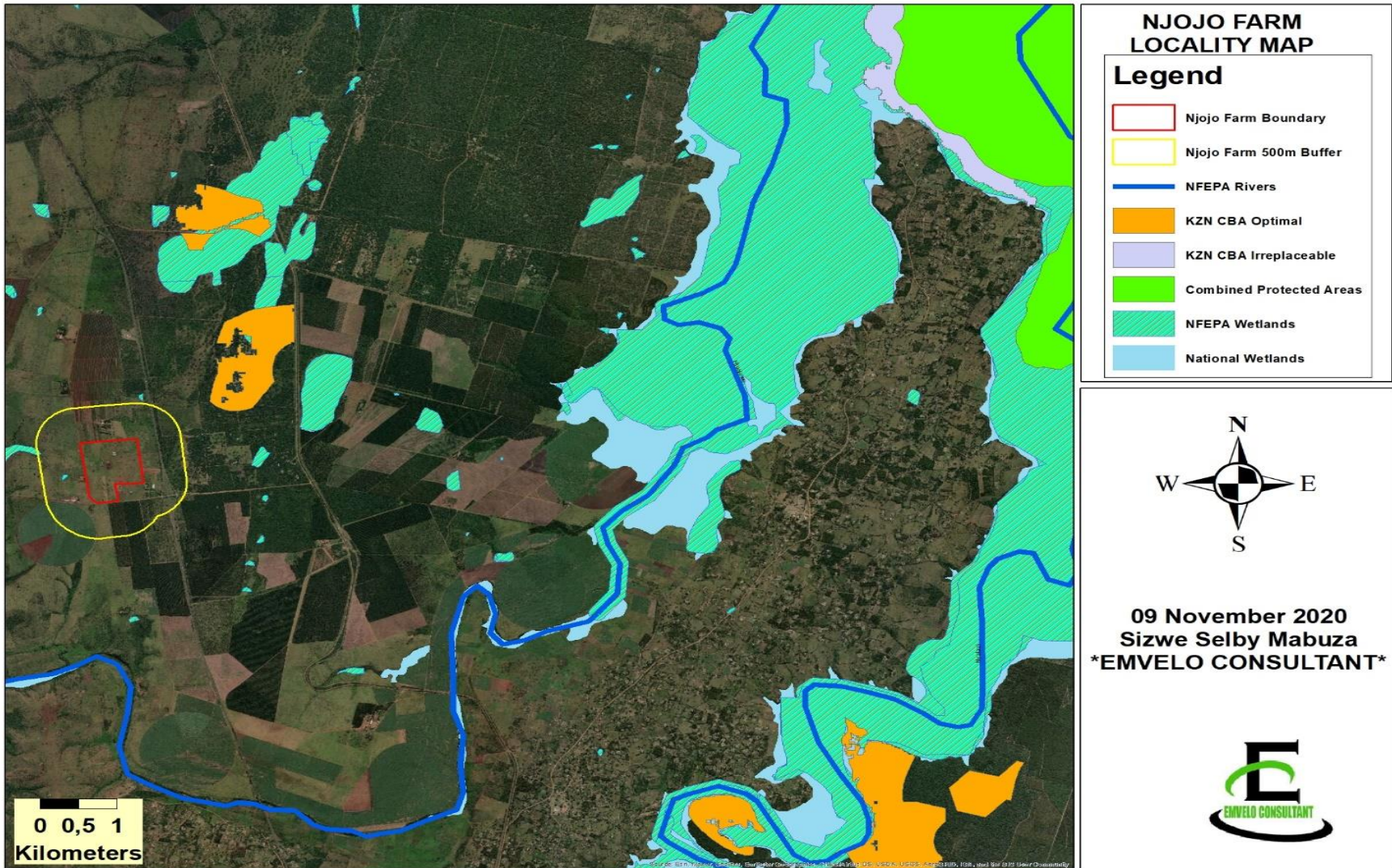
Postal address: P. O. Box 101672, Meerensee,3901;

Tel: 035 789 0632;

Fax: 086 577 5220,

Email: info@emveloconsultants.co.za.

APPENDIX A
(LOCALITY MAP)



**APPENDIX B
(SITE IMAGES)**





38 Jacaranda Street, Arboretum, Richards Bay
P.O. Box 101672, Meerensee, 3901
Telephone: 035 789 0632 / 078 284 9332 Fax: 086 535 8846
Website: www.emveloconsultants.co.za E-mail: info@emveloconsultants.co.za

Integrity | Honesty | Excellence



REGISTRATION AND COMMENT FORM

THE PROPOSED EXPANSION OF NJOJO FARM WITHIN THE BIG 5 HLABISA LOCAL MUNICIPALITY, UMKHANYAKUDE DISTRICT, KWAZULU-NATAL.

I wish to register as an interested and affected party and / or bring to the attention of Emvelo Consultant the following information.

<u>Personal Information</u>	
Name and Surname	
Company /organization	
Physical Address	
Postal address	
<u>Telephone:</u>	<u>Cell:</u>
Email:	
Due to Covid-19 Pandemic, we would like you to inform us on a preferred and effective means of receiving documents and communication from us. <u>Method:</u> <u>Address:</u>	
<u>Comments</u>	

Signature

Date