



Emvelo Quality and Environmental consultant (PTY) Ltd

38 Jacaranda Street, Arboretum, Richards Bay, 3900.

P.O. Box 101672, Meerensee, 3901

BACKGROUND INFORMATION DOCUMENT

EIA Application in support to the Atmospheric Emissions License (AEL) Application for the operation of the Foundry for Armscor Dockyard in Simons Town, City of Cape Town Metropolitan, Western Cape.

JULY 2021

Prepared by:

**Emvelo Quality and Environmental
Consultant (PTY) Ltd**

On Behalf of:

ARMSCOR SOC Ltd.



ARMSCOR
Armaments Corporation of South Africa SOC Ltd

Authors: Dumisani Myeni (*Bsc Hon.*)

Phumzile Lembede (*Bsc Hon.*)

29 July 2021

INTRODUCTION

The Armscor SOC Ltd in Simonstown had received the compliance notice to apply for an Atmospheric Emission Licence (AEL) with regard the operations of Armscor Dockyard Foundry within corner Cole Point and St George Road, Simons town. Therefore, in terms of requirement Armscor will apply for the Section 22 (A) rectification for an AEL application for the foundry. Consequently, the Environmental Impact Assessment (Scoping and EIR) process has commenced, in support to the application for the AEL for the operation of the Armscor Dockyard Foundry. This is meant to assist the developer in identifying all potential adverse environmental consequences of the project, their extent, significance and to ensure that the environmental management requirements are adequately implemented.

In terms of the National Environmental Management Act, 1998 (Act No.107 of 1998), as read with the Environmental Impact Assessment (EIA) Regulations of 2014 as amended in 2017, an Environmental Authorization must be obtained from the relevant decision-making authority. Therefore, in terms of S24C of NEMA, the national Department of Forestry, Fishery and the Environment (DFFE) is the competent authority for activities undertaken by a statutory body that performs an exclusive

function for the national sphere of government, as this activity it situated on a military base and a national key point in Simons Town.

For this application the Scoping and EIR will be undertaken.

The purpose of this Background Information Document (BID) is to provide you, as an Interested or Affected Party (I&AP), with a brief description of the EIA process to be undertaken and to obtain comments and contributions from I&AP's with regards to the potential impacts to the environment by the proposed project.

PROJECT DESCRIPTION

The Armscor Dockyard operates a Non-Ferrous Foundry, whereby the facility process the: Aluminum, Copper, Lead and Zinc base alloy metal castings. This method of metal casting involves melting metals into the furnace, pouring molten metal into a mould containing a cavity of the desired shape to produce a metal product. The casting is then removed from the mould and excess metal is removed through fettling process. The product may then undergo a range of processes such as polishing and surface coating or finishing before it can be dispatch.

The above mention activities result in atmospheric emissions. As a result, the AEL is required for the foundry's operation. Therefore, prior application for AEL, the activity must obtain an Environmental Authorisation.

PROJECT LOCATION

The site co-ordinates are as follows:

Lat/Long	Degrees	Minutes	Seconds
South	34°	11'	33.65"
East	18°	26.23'	23.73"

WHAT IS AN ENVIRONMENTAL IMPACT ASSESSMENT?

An EIA is an effective planning and decision-making tool, which allows for the

identification of potential adverse environmental consequences of a proposed project, and its management through the planning process.

In terms of the National Environmental Management Act, 1998 (Act No.107 of 1998), as read with the Environmental Impact Assessment (EIA) Regulations of 2014 as amended in 2017, an Environmental Authorization must be obtained from the relevant decision-making authority, the Department of the Department of Forestry, Fisheries and Environment (DFFE), prior to the commencement of any of the listed activities that may result in potential negative impacts on the environment. Thus, an EIA is required. This will involve the public participation process.

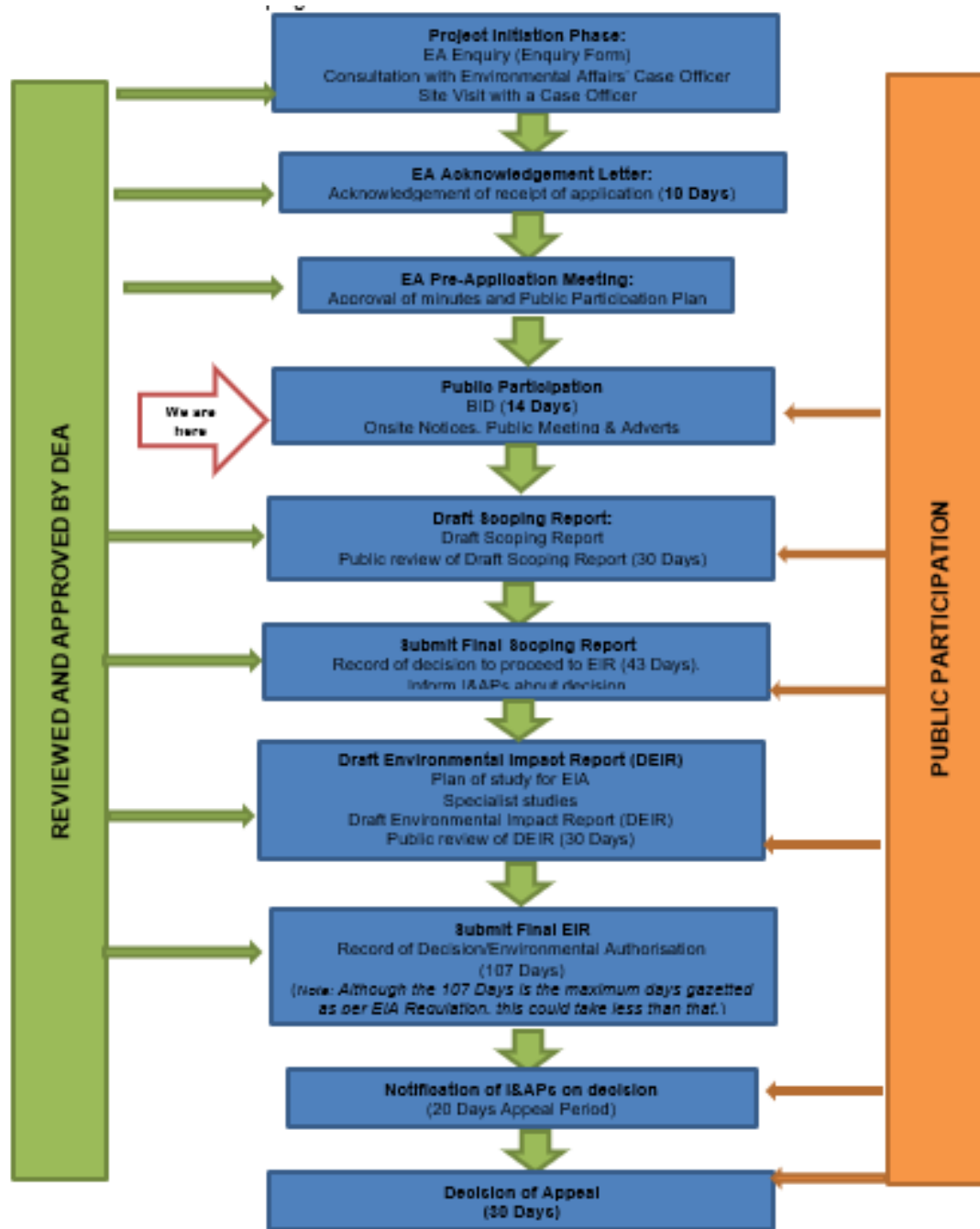


Figure 1: EIA process

In terms of the Environmental Impact Assessment (EIA) regulations, an independent Environmental Assessment Practitioner must be appointed to conduct the EIA. Therefore, Emvelo Quality and

Environmental Consultant (Pty) Ltd. (Emvelo Consultants) has been appointed to conduct the EIA. Emvelo Consultants will identify and assess the potential environmental impacts associated with the proposed activity by

conducting an objective and independent EIA in which all the relevant information and opinions of Interested and Affected Parties (IAPs) will be collected and passed on to the Department of Forestry, Fisheries and Environment (DFFE). In this way, an informed decision-making process can take place.

LISTED ACTIVITIES TRIGGERED BY THIS PROJECT

The proposed project triggers the following listed activities of the Listing Notices;

Table 1: Listed Activities

LISTING NOTICE	ACTIVITY	DESCRIPTION OF ACTIVITY
2	6	The development of facilities or infrastructure for any process or activity which requires a permit or licence or an amended permit or licence in terms of national or provincial legislation governing the generation or release of emissions, pollution or effluent.

WHAT IS PUBLIC PARTICIPATION?

Public participation is the process that promotes information sharing, consultation and active involvement amongst stakeholders and all interested and affected parties.

During the Public Participation Process, input from the proponent, technical experts, government authorities and the general public will be gathered to result in a better understanding of the project for all involved thus ensuring an informed decision-making throughout the process.

REGISTRATION OF INTERESTED AND AFFECTED PARTIES.

Any person, company, authority or other entity that might be directly or indirectly affected by the proposed activity is invited to register as an I&AP, in order to assist the EAP in identifying possible environmental, economic and social impacts of the proposed development and to make suggestions for mitigations. These comments will be included as part of the Scoping and Environmental Impact Report which will be submitted to the Department of Forestry, Fisheries and Environment (DFFE) for consideration.

I&APs may forward their written comments along with their contact details within 14 days from receiving the document to; **Phumzile Lembede**.

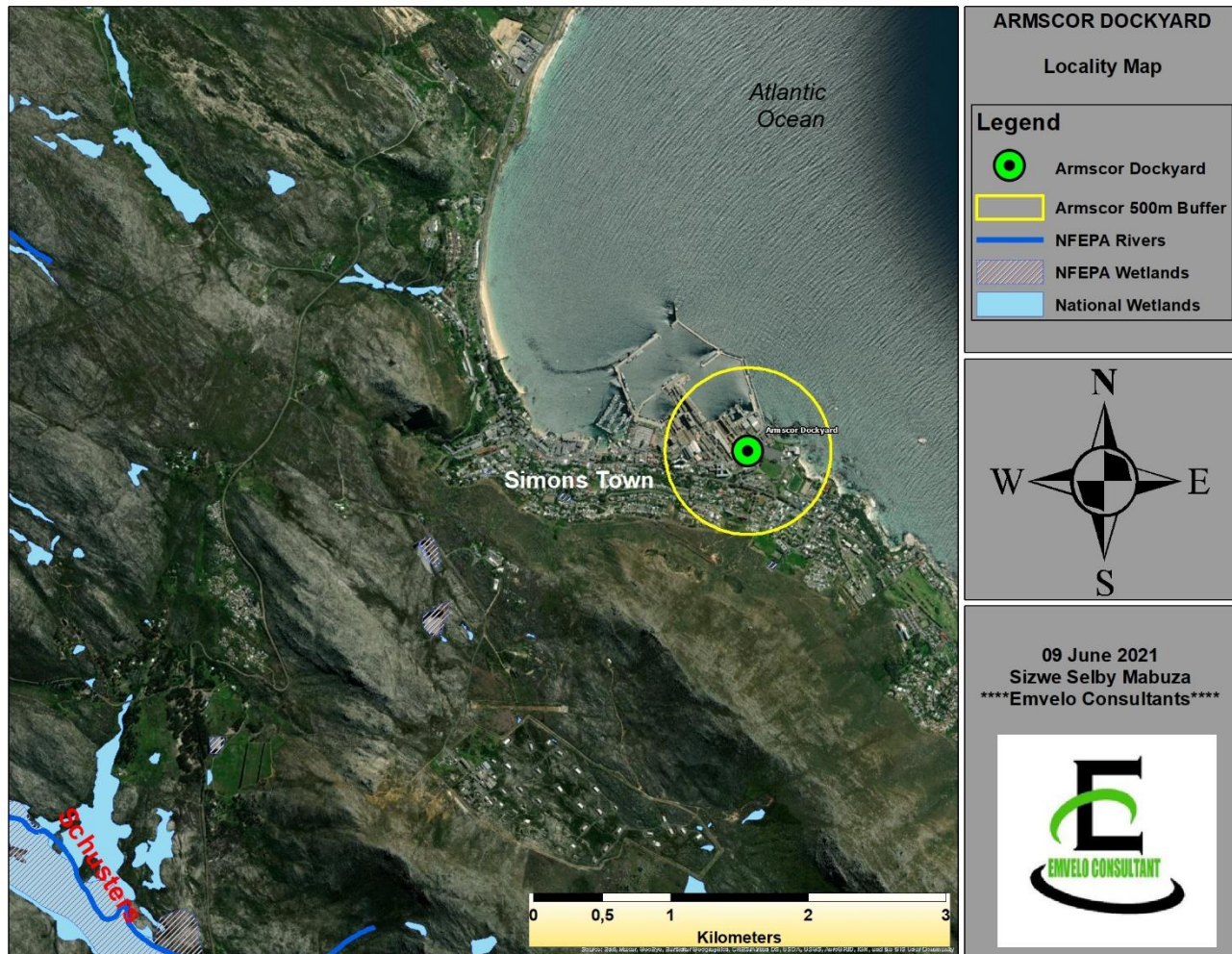
Postal address: P. O. Box 101672, Meerensee,3901;

Tel: 035 789 0632;

Fax: 086 577 5220,

Email: info@emveloconsultants.co.za / dumisani@emveloconsultants.co.za

APPENDIX A: (LOCALITY MAP)





Emvelo Quality and Environmental Consultant (PTY) Ltd

38 Jacaranda Street, Arboretum , Richards Bay, 3900.

P.O. Box 101672, Meerensee, 3901

Info@emveloconsultants.co.za / dumisani@emveloconsultants.co.za

REGISTRATION AND COMMENT FORM

EIA Application in support to the Atmospheric Emissions License (AEL) Application for the operation of the Foundry for Armscor Dockyard in Simons Town, City of Cape Town Metropolitan, Western Cape.

I wish to register as an interested and affected party and / or bring to the attention of Emvelo Consultant the following information.

<u>Personal Information</u>	
Name and Surname	
Company /organization	
Physical Address	
<u>Postal address</u>	
<u>Telephone:</u>	<u>Cell:</u>
Email:	
Due to Covid-19 Pandemic, we would like you to inform us on a preferred and effective means of receiving documents and communication from us.	
<u>Method:</u>	<u>Address:</u>
<u>Comments</u>	

Signature

Date