



## MEETING NOTES

<b>JOB TITLE</b>	Euronotus Consents
<b>PROJECT NUMBER</b>	41103473
<b>DATE</b>	08 October 2021
<b>TIME</b>	10h00
<b>VENUE</b>	Online (MS Teams)
<b>SUBJECT</b>	Pre-Application Meeting with DFFE
<b>CLIENT</b>	Red Rocket South Africa (Pty) Ltd / G7 Renewable Energies (Pty) Ltd
<b>PRESENT</b>	Zama Langa (DFFE) – ZL Juliet Mahlangu (DFFE – Case Officer) – NN Dr. Danie Smit (DFFE) – DS Caryn Clarke (G7) - CC Colette Stander (G7) - CS Janine Brasington (Red Rocket) - JB Magdalena Logan (Red Rocket) - ML Ashlea Strong (WSP) – AS Babalwa Mqokeli (WSP) – BM
<b>APOLOGIES</b>	Jennifer Green (WSP) Veronique Vyfe (G7)
<b>DISTRIBUTION</b>	As above ( <b>Appendix A</b> )

MATTERS ARISING	ACTION
<b>1.0 INTRODUCTIONS AND WELCOME</b>	
<ul style="list-style-type: none"><li>— AS welcomed everyone followed by a round of introductions and an overview of the meeting agenda.</li><li>— A PowerPoint presentation was presented to all attendees to provide information on the projects.</li></ul> <p><i>*AS received consent from all parties present to record the meeting.</i></p> <p><i>** A copy of the PowerPoint presentation has been attached hereto for reference (<b>Appendix B</b>).</i></p>	
<b>2.0 PRESENTATION AND DISCUSSION</b>	
<b>2.1 Project Background and Description</b> <ul style="list-style-type: none"><li>— AS provided a brief overview of the Project, outlining the various consents required for the complex as well as identifying the three Special Project Vehicles (SPVs) as the</li></ul>	<ul style="list-style-type: none"><li>— Minutes and PPP to be submitted via email</li></ul>

The Pavilion, 1st Floor  
Cnr Portwood and Beach Road, Waterfront  
Cape Town, 8001  
South Africa

T: +27 21 481 8700

F: +086 606 7121

[www.wsp.com](http://www.wsp.com)

\\corp.pbwan.net\za\Central\_Data\Projects\41100xxx\41103473 - G7 energy - Euronotus Cluster\41 ES\01-Reports\03-Pre-Application Meeting\41103473\_20211008\_Euronotus\_DFFE Pre-Application Meeting Minutes\_Final.docx

**MATTERS ARISING**

**ACTION**

<p>Applicants (i.e. Brandvalley Wind Farm (Pty) Ltd, Karreebosch Wind Farm (Pty) Ltd and Rietkloof Wind farm (Pty) Ltd.</p> <ul style="list-style-type: none"> <li>— The consents include the following: <ul style="list-style-type: none"> <li>▪ Updating and approval of the EMPs and layouts for the WEFs and overhead powerlines (OHPL) as required by the existing EAs</li> <li>▪ Part 1 Amendment Processes to increase the turbine size from 5.5 MW to 6 MW (Karreebosch and Brandvalley)</li> <li>▪ Part 2 Amendment Process to increase the hub height and rotor diameter of 9 turbines to the same specifications as approved WTGs; WTGs will also be increased to 6 MW (Rietkloof)</li> <li>▪ Undertaking one new Basic Assessment Process for a new Transmission integration powerline to integrate the Karreebosch WEF to the National Grid</li> </ul> </li> <li>— Layouts of the WEFs and the Powerlines were shown.</li> <li>— The location of the Project areas was identified as being in the Karoo Hoogland and Laingsburg Local Municipalities, in the Northern and Western Cape.</li> <li>— The farm portions affected by the three WEFs were outlined.</li> <li>— Key considerations noted included the presence of CBAs, ESAs, NPAES, and that the projects fall within the Central Strategic Transmission Corridor (STC) and the Komsberg Renewable Energy Development Zone (REDZ).</li> </ul>	<ul style="list-style-type: none"> <li>— PP Plan must include stakeholder databases</li> </ul>
<p>2.2 <b>EMPr Updates and Final Layouts</b></p> <ul style="list-style-type: none"> <li>— AS ran through the EMPr updates that are required.</li> <li>— It was confirmed that these are not Regulation 37 processes as the EMPs are not yet approved.</li> <li>— Furthermore, it was confirmed that the final layouts will submitted as part of the EMPr approval process and will not trigger a Part 2 amendment as they are not yet approved.</li> </ul>	
<p>2.3 <b>Part 1 and Part 2 Amendment Processes</b></p> <ul style="list-style-type: none"> <li>— AS presented the proposed Part 1 Amendments applicable to the Karreebosch and Brandvalley WEFs regarding the increase in turbine capacity.</li> <li>— It was confirmed that the construction camp location change for the Karreebosch WEF can be accommodated within the Final Layout and EMPr amendment.</li> <li>— It was confirmed that the changes related to Karreebosch WEF and Brandvalley WEF do constitute Part 1 Amendments</li> <li>— AS presented the Part 2 Amendment applicable to the Rietkloof WEF regarding to the increase in hub height and rotor diameter of the 9 smaller approved turbines.</li> <li>— ZL confirmed that proposed changes to the Rietkloof WEF to constitute a Part 2 Amendment.</li> </ul>	
<p>2.4 <b>Karreebosch OHPL Basic Assessment Process</b></p> <ul style="list-style-type: none"> <li>— AS ran through the applicable Listed Activities of the EIA Regulations (2014, as amended), noting a Basic Assessment (BA) process is required for the application for Environmental Authorisation.</li> </ul>	
<p>2.5 <b>Specialist Assessments</b></p> <ul style="list-style-type: none"> <li>— AS ran through the identified sensitivities as per the DFFE Online Screening Tool report, and specialist assessments noted therein.</li> <li>— AS identified the specialist assessments that are to be undertaken as part of the BA process, as well as the studies that are not being undertaken as part of the assessment and supporting reasons for their exclusion.</li> </ul>	
<p>2.6 <b>Competent Authority</b></p> <ul style="list-style-type: none"> <li>— AS indicated that DFFE had been identified as the Competent Authority (CA).</li> <li>— ZL confirmed that DFFE is the CA</li> </ul>	
<p>2.7 <b>Public Participation Process</b></p> <ul style="list-style-type: none"> <li>— AS provided an overview of the proposed public participation process in accordance with the EIA Regulations (2014, as amended).</li> <li>— AS noted that a draft Public Participation (PP) Plan will be issued to DFFE along with the meeting minutes for review and approval.</li> </ul>	

## MEETING NOTES

### MATTERS ARISING

### ACTION

<p>— ZL requested that the Final PP Plan must indicate the PP proposed for each separate process (i.e. EMPPr updates, Part 2 Amendment and the Basic Assessment)</p> <p>— ZL requested the PP Plan to include the existing Stakeholder Databases such that the DFFE can confirm that the relevant stakeholders (such as DFFE: Biodiversity, CAA, SKA, SAWS etc.) are included.</p> <p><b>2.8 Timeframes</b></p> <p>— AS noted the following Authority timeframes:</p> <ul style="list-style-type: none"> <li>▪ Basic Assessment – 57 days</li> <li>▪ EMPPr Updates – 30 days</li> <li>▪ Part 1 Amendment – 30 days</li> <li>▪ Part 2 Amendment – 57 days</li> </ul> <p>— JM confirmed that these timeframes were correct.</p>	
<p><b>3.0 QUESTIONS AND COMMENTS</b></p>	
<p>JG opened the floor for any comments or questions. The following items were raised and discussed.</p> <p><b>3.1 Confirmation of Online Submission</b></p> <p>— AS noted that the BA and Amendment Applications would be submitted via the DFFE online submission platform.</p> <p>— AS requested confirmation that the DFFE online submission platform will also be utilised for the submission of the EMPPr and Layout updates?</p> <p>— ZL confirmed that the DFFE online submission platform should be used for all submissions</p> <p><b>3.2 Future Pre-Application Meeting requests</b></p> <p>— ZL requested that in future a separate pre-application request should be submitted for each aspect of the project so that the DFFE can allocate different case officers to each aspect of the project.</p> <p>— This request was acknowledged.</p>	
<p><b>4.0 WAY FORWARD</b></p>	
<p>— AS summarised the following action points for the way forward:</p> <ul style="list-style-type: none"> <li>▪ WSP to formalise meeting minutes and submit via email to DFFE, along with the PP Plan, for approval.</li> <li>▪ WSP to draft the application form and submit to DFFE.</li> <li>▪ WSP to submit all documentation via the online platform.</li> </ul> <p>No further points were raised for discussion.</p> <p>The meeting was closed at 11:00</p>	<p>— WSP to formalise meeting minutes and distribute, along with PPP, for approval</p>

### NEXT MEETING

No additional meetings have been scheduled.

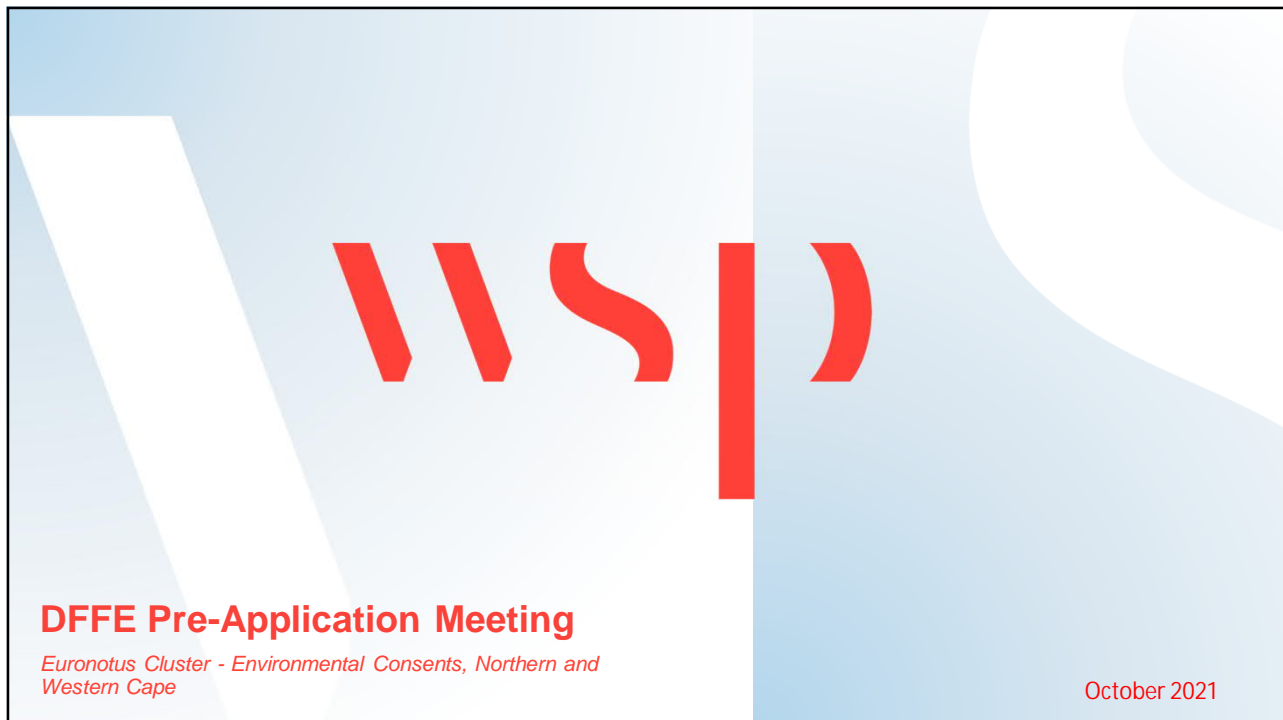
## MEETING NOTES

### APPENDIX A: MEETING ATTENDANCE

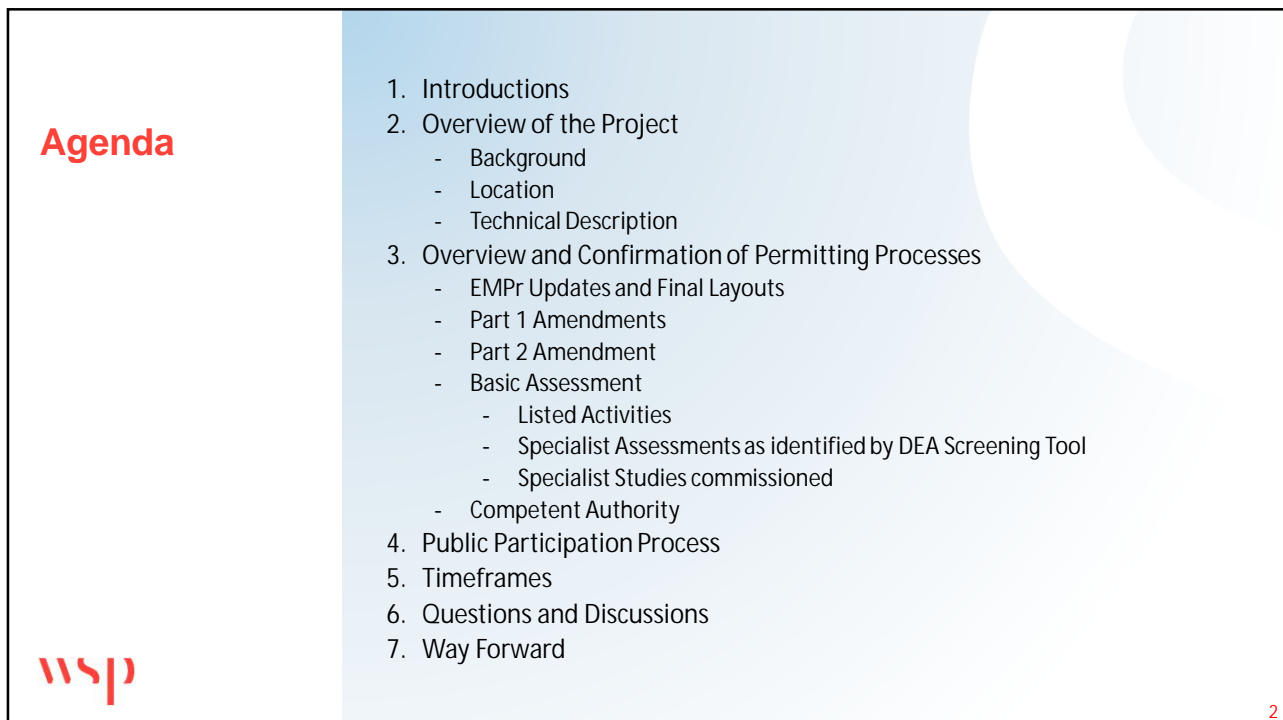
<b>Meeting Start Time</b>	10/8/2021, 9:56:02 AM					
<b>Meeting End Time</b>	10/8/2021, 12:11:03 PM					
<b>Meeting Id</b>	b370378a-f486-4bf1-abd0-bae3750274f9					
<b>Full Name</b>	<b>Join Time</b>	<b>Leave Time</b>	<b>Duration</b>	<b>Email</b>	<b>Role</b>	<b>Participant ID (UPN)</b>
Mqokeli, Babalwa	10/8/2021, 9:56:02 AM	10/8/2021, 12:11:03 PM	2h 15m	Babalwa.Mqokeli@wsp.com	Presenter	Babalwa.Mqokeli@wsp.com
Strong, Ashlea	10/8/2021, 9:56:02 AM	10/8/2021, 12:11:03 PM	2h 15m	Ashlea.Strong@wsp.com	Organizer	Ashlea.Strong@wsp.com
Dr. Danie Smit	10/8/2021, 9:56:08 AM	10/8/2021, 10:57:13 AM	1h 1m	dsmit@environment.gov.za	Presenter	dsmit@environment.gov.za
Zama Langa	10/8/2021, 9:58:48 AM	10/8/2021, 10:57:12 AM	58m 23s	zlanga@environment.gov.za	Presenter	zlanga@environment.gov.za
Julliet Mahlangu	10/8/2021, 9:59:29 AM	10/8/2021, 10:57:14 AM	57m 45s	jmmahlangu@environment.gov.za	Presenter	jmmahlangu@environment.gov.za
Colette Alisha Stander	10/8/2021, 10:00:38 AM	10/8/2021, 10:09:25 AM	8m 47s	Colette@g7energies.onmicrosoft.com	Presenter	Colette@g7energies.onmicrosoft.com
Janine Brasington	10/8/2021, 10:01:16 AM	10/8/2021, 10:57:11 AM	55m 54s	j.brasington@redrocket.energy	Presenter	j.brasington@redrocket.energy
Caryn Clarke	10/8/2021, 10:01:46 AM	10/8/2021, 10:03:38 AM	1m 52s	caryn@g7energies.onmicrosoft.com	Presenter	caryn@g7energies.onmicrosoft.com
Caryn Clarke	10/8/2021, 10:09:43 AM	10/8/2021, 10:57:13 AM	47m 29s	caryn@g7energies.onmicrosoft.com	Presenter	caryn@g7energies.onmicrosoft.com

## MEETING NOTES

## APPENDIX B: PRESENTATION



1



2

## 1. Introductions



- G7 Renewable Energies (Pty) Ltd:
  - Veronique Fyfe
  - Caryn Clarke
- Red Rocket South Africa (Pty) Ltd:
  - Magdalena Logan
  - Janine Brasington
- WSP Group Africa (Pty) Ltd:
  - Jennifer Green (Environmental Consultant)
  - Babalwa Mqokeli (Senior Environmental Consultant)
  - Ashlea Strong (Project Manager)
- Department of Forestry, Fisheries and Environment (DFFE):
  - Julliet Mahlangu
  - Zama Langa
  - Danie Smit

3

3

## 2. Overview of the Project



### Background

- Applicants:
  - Brandvalley Wind Farm (Pty) Ltd
  - Karreebosch Wind Farm (Pty) Ltd
  - Rietkloof Wind Farm (Pty) Ltd
- Red Rocket South Africa (Pty) Ltd have included all three of the above-mentioned Wind Energy Facilities (WEFs) as part of their submissions for the Round 5 REIPPPP Bidding.
- As part of this process they were required to ensure that the required Environmental Consents for these projects are underway. These include:
  - Updating and approval of the EMPs and layouts for the WEFs and overhead powerlines (OHPL) as required by the existing EAs
  - Part 1 Amendment Processes to increase the turbine size from 5.5 MW to 6 MW (Karreebosch and Brandvalley)
  - Part 2 Amendment Process to increase the hub height and rotor diameter of 9 turbines to the same specifications as approved WTGs; WTGs will also be increased to 6 MW (Rietkloof)
  - Undertaking one new Basic Assessment Process for a new Transmission integration powerline to integrate the Karreebosch WEF to the National Grid

4

4

## 2. Overview of the Project



### Existing Environmental Authorisations

- Karreebosch WEF:
  - 14/12/16/3/3/2/807 – 29 January 2016
  - 14/12/16/3/3/2/807/AM1 – 10 June 2016
  - 14/12/16/3/3/2/807/AM2 – 15 November 2018
  - 14/12/16/3/3/2/807/AM3 – 30 October 2019
- Brandvalley WEF:
  - 14/12/16/3/3/1/900 – 23 November 2016
  - 14/12/16/3/3/1/900/AM1 – 14 February 2019
- Brandvalley Power Integration:
  - 14/12/16/3/3/1/1591 – 23 November 2016
- Rietkloof WEF:
  - 14/12/16/3/3/2/899 – 23 November 2016 (9 Turbines)
  - 14/12/16/3/3/2/1977 – 10 April 2019 (51 Turbines)
  - 14/12/16/3/3/2/1977/AM1 – 9 May 2019
  - 14/12/16/3/3/2/1977/AM1 – 16 September 2019 (Merged EA)
- Rietkloof Power Integration:
  - 14/12/16/3/3/1/1590 – 23 November 2016

5

5

## 2. Overview of the Project



### Location

	Brandvalley WEF	Karreebosch WEF	Rietkloof WEF
Province:	Western and Northern Cape Province	Western and Northern Cape Province	Western Cape Province
Local Municipality:	Karoo Hoogland and Laingsburg	Karoo Hoogland and Laingsburg	Laingsburg
Farms:	<ul style="list-style-type: none"> <li>• Farm Barendskraal 76 Remainder and Portion 1</li> <li>• Farm Brandvalley 75 Remainder and Portion 1</li> <li>• Farm Fortuin 74 Remainder, Portion 1 and Portion 3</li> <li>• Farm Kabettouw 160 Remainder</li> <li>• Farm Muishond Rivier 161 Remainder and Portion 1</li> <li>• Farm Rietfontein 197.</li> </ul>	<ul style="list-style-type: none"> <li>• Farm Appelsfontein 201</li> <li>• Farm Ekkraal 199 Remainder, Portion 1 and Portion 2</li> <li>• Farm Karreebosch 200 Remainder</li> <li>• Farm Karreekloof 196 Portion 1</li> <li>• Farm Klibbanksfontein 198 Remainder and Portion 1</li> <li>• Farm Kranskraai 189</li> <li>• Farm Oude Huis 195</li> <li>• Farm Rietfontein 197</li> <li>• Farm Roode Wal 187</li> <li>• Farm Standvastigheid 210 Portion 2</li> <li>• Farm Wilgebosch Rivier 188 Remainder</li> <li>• Farm Apn'Is Kraal 105</li> <li>• Farm Bon Espirange 73 Remainder and Portion 1</li> </ul>	<ul style="list-style-type: none"> <li>• Farm Barendskraal 76 Portion 1</li> <li>• Farm Fortuin 74 Remainder and Portion 3</li> <li>• Farm Hartjieskraal 77 Remainder and Portion 1</li> <li>• Farm Nuwerus 284 Remainder</li> <li>• Farm Rietkloof Annexe 88 Portion 1</li> <li>• Farm Snyders Kloof 80 Remainder and Portion 1</li> <li>• Farm Vogelstruisfontein 81;</li> <li>• Farm Wilgehout Fontein 87 Remainder</li> </ul>

6

6

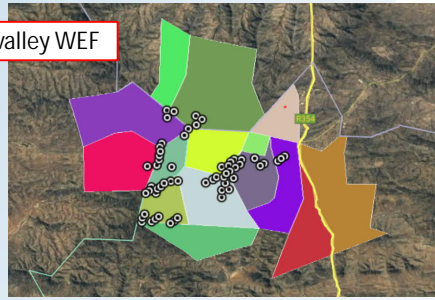


## 2. Overview of the Project

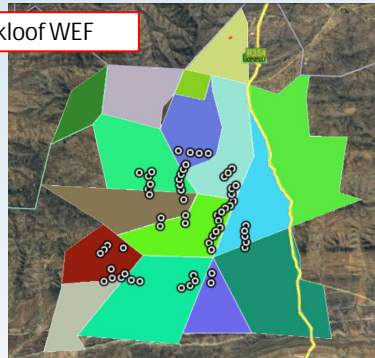
Layouts as submitted with Final EIA

wsp

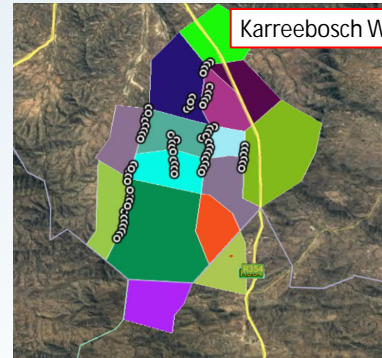
Brandvalley WEF



Rietkloof WEF



Karreebosch WEF

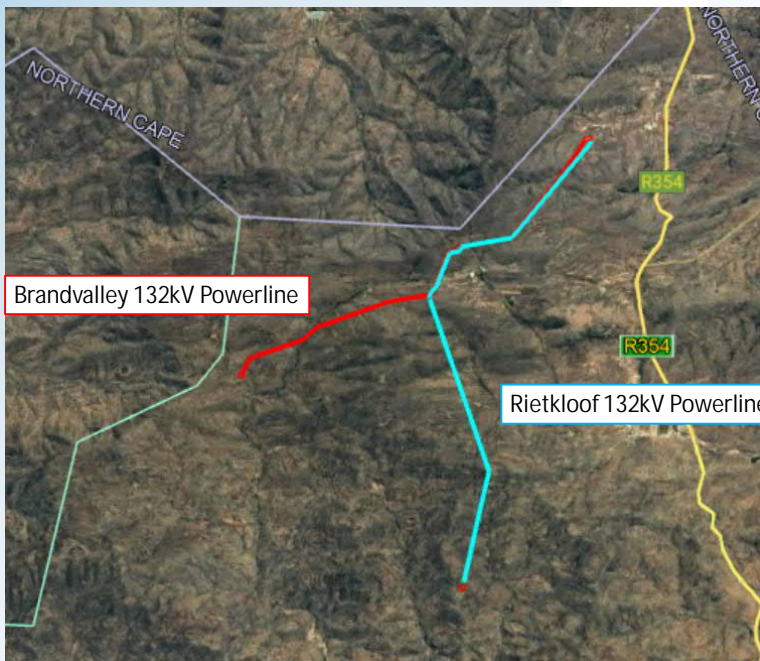


7

7

## 2. Overview of the Project

wsp

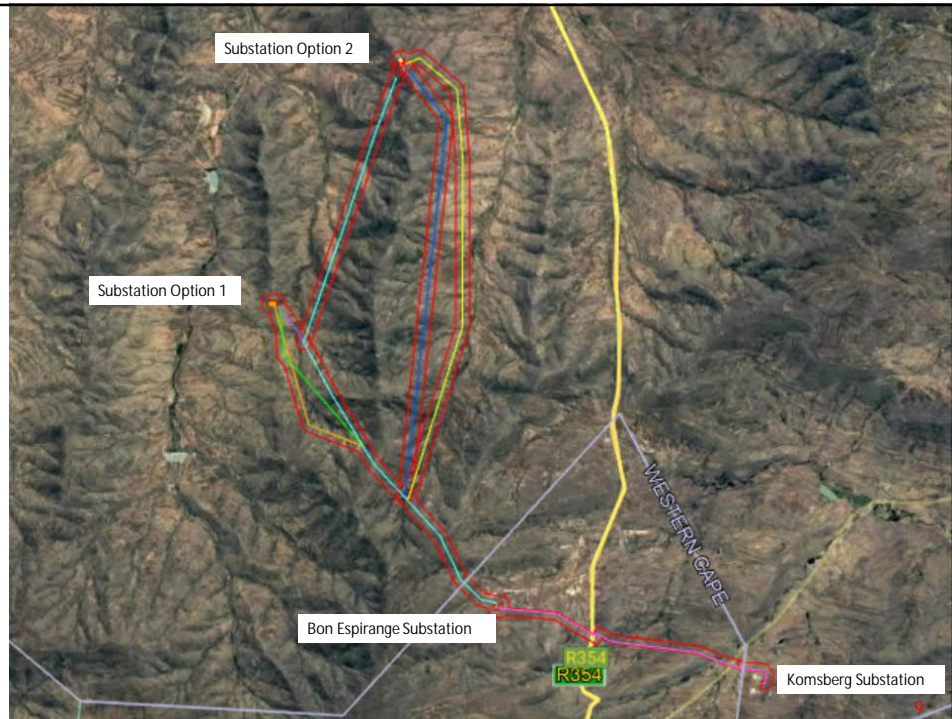


8

8

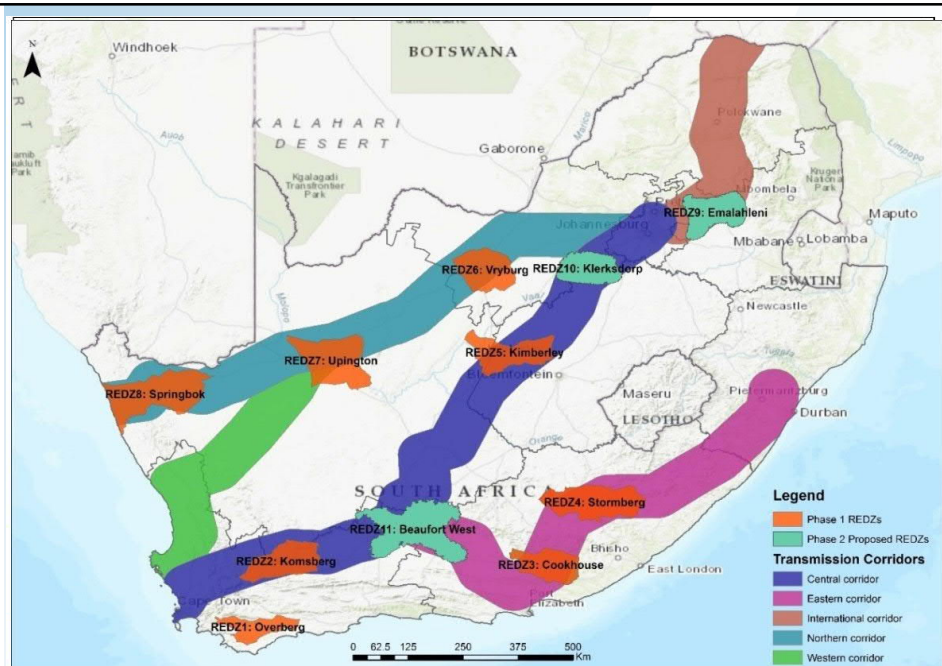
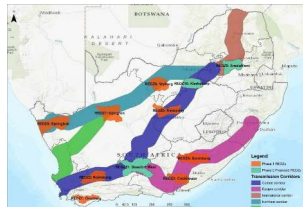
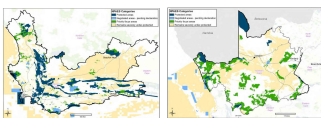
## 2. Overview of the Project

Karreebosch 132kV  
Powerline



9

## 2. Overview of the Project



10

10

### 3. Permitting Processes

#### EMPr Update and Final Layout Processes

- The EAs issued for the WEFs and the Rietkloof and Brandvalley powerlines indicate that the EMPrs and layouts submitted as part of the original EIA process were not approved and must be

16. The Environmental Management Programme (EMPr) submitted as part of the EIA is not approved and must be amended to include measures as dictated by the final site lay-out map and micro-siting; and the provisions of this environmental authorisation. The EMPr must be made available for comments by registered Interested and Affected Parties and the holder of this environmental authorisation must consider such comments. Once amended, the final EMPr must be submitted to the Department for written approval prior to commencement of the activity. Once approved the EMPr must be implemented and adhered to.

- Confirmation:
  - Amended EMPrs will just be submitted for approval
  - These are not Regulation 37 processes as the EMPrs are not yet approved
  - The final layout will be submitted as part of the EMPr approval process and will not trigger a Part 2 amendment as they are not yet approved



11

11

### 3. Permitting Processes

#### Part 1 Amendment Processes

- Karreebosch WEF
  - The Applicant intends to use turbines of up to 6MW. The EA currently authorises turbines of 5.5MW.
  - The increase in MW per turbine will not alter the hub height or rotor diameter of the turbine. The number of approved turbines will also be decreased to a maximum of up to 35. This is also applicable to Rietkloof and Brandvalley.
  - A Part 1 Amendment will therefore be required to amend the EA to allow for turbines of up to 6MW as this is a non-substantive amendment.
  - Following a recent specialist site walkover, it was noted that the approved construction camp for Karreebosch is currently located in an 8m wide watercourse and will therefore need to be relocated. The construction camp is proposed to be located closer to the R354 in an area with lower environmental sensitivities. The construction camp will remain on the same farm portion that was previously assessed as part of the EIA.
  - The EMPr update and final layout will reflect the new location of the construction camp.
  - Specialists will provide input regarding the new construction camp location.



12

12



### 3. Permitting Processes



#### Part 1 Amendment Processes

- Brandvalley WEF
  - A Part 1 Amendment Application was submitted on 14 September 2021 to extend the validity period of the EA and a decision is expected by 15 October 2021.
  - As with Karreebosch, the Applicant intends to use turbines of up to 6MW. The EA currently authorises turbines of 5.5MW.
  - The increase in MW per turbine will not alter the hub height or rotor diameter of the turbine.
  - The number of approved turbines will also be decreased to a maximum of up to 35.
  - A Part 1 Amendment will therefore be required to amend the EA to allow for turbines of up to 6MW as this is a non-substantive amendment.

13

13

### 3. Permitting Processes



#### Part 2 Amendment Process

- Rietkloof WEF
  - The EA currently approves two types of wind turbines with different specifications.
  - The Project engineers and wind turbine manufacturers have advised that the 9 smaller approved turbines (with an approved hub height of 120m and rotor diameter of 140m) should be used in the final layout.
  - The hub height and rotor diameter of these 9 turbines will need to be increased to the same specifications as the approved 51 WTGs.
  - The Applicant intends to use turbines of up to 6MW. The EA currently authorises turbines of 5.5MW.
  - A Part 2 Amendment Process will therefore need to be undertaken as the increase in hub height and rotor diameter is a substantive amendment.
  - The construction camp for the Rietkloof WEF needs to be relocated out of viable agricultural land to the Roggeveld WEF batch plant area as this will result in lower environmental and social impacts.
  - The relocation of the construction camp will be applied for in the same Part 2 Amendment process to increase the hub height and rotor diameter of the turbines.

14

14

### 3. Permitting Processes



#### Basic Assessment Processes for 132kV Powerline

- The Applicant is looking to investigate a 132kV power integration option for the Karreebosch WEF.
- Overhead Powerline
  - Approximately 20km in length
  - 132kV steel single or double structure with kingbird conductor
  - A 100m corridor around the powerline will be assessed
  - Pole positions will only be available post preferred bidder award (i.e. once the powerline design has started)
- Construction Methodology
  - Standard overhead line construction methodology will be employed-
  - Drill holes or excavate (depending on ground conditions), plant poles, string conductor
  - Not envisaged that any large excavations and stabilized backfill will be required

15

15

### 3. Permitting Process



#### Listed Activities

- Listing Notice 1 - GNR 327

LISTED ACTIVITY	DESCRIPTION OF PROJECT ACTIVITY
<b>Activity 11:</b> The development of facilities or infrastructure for the transmission and distribution of electricity— (i) outside urban areas or industrial complexes with a capacity of more than 33 but less than 275 kilovolts; or (ii) inside urban areas or industrial complexes with a capacity of 275 kilovolts or more; excluding the development of bypass infrastructure for the transmission and distribution of electricity where such bypass infrastructure is— (a) temporarily required to allow for maintenance of existing infrastructure; (b) 2 kilometres or shorter in length; (c) within an existing transmission line servitude; and (d) will be removed within 18 months of the commencement of development.	The 132 kV transmission line will connect the Karreebosch WEF to the national grid. The WEF and the transmission line are outside of the urban edge. This activity is therefore triggered by the proposed construction of the transmission infrastructure.
<b>Activity 12 (ii), (a) and (c):</b> The development of— (ii) infrastructure or structures with a physical footprint of 100 square metres or more; where such development occurs— (a) within a watercourse; or (c) if no development setback exists, within 32 metres of a watercourse, measured from the edge of a watercourse	The powerline will require the erection of tower structures, which may require a construction area of approximately 100m <sup>2</sup> . There is the potential that a tower structure or access road will transverse a watercourse (or drainage line). This activity will potentially be triggered by the proposed construction of the transmission infrastructure.
<b>Activity 19:</b> The infilling or depositing of any material of more than 10 cubic metres into, or the dredging, excavation, removal or moving of soil, sand, shells, shell grit, pebbles or rock of more than 10 cubic metres from a watercourse	The powerline will require the erection of tower structures and access roads. There is the potential that a tower structure or access road will transverse a watercourse (or drainage line) which will require excavation of removal of soil or sand from the watercourse. This activity will potentially be triggered by the proposed construction of the transmission infrastructure.
<b>Activity 27:</b> The clearance of an area of 1 hectares or more, but less than 20 hectares of indigenous vegetation except where such clearance of indigenous vegetation is required for— (i) the undertaking of a linear activity; maintenance purposes undertaken in accordance with a maintenance management plan.	The powerline is considered a linear activity and therefore this activity is not triggered by the proposed construction of the transmission lines. However, the construction of the common 132 kV on-site substation will require the clearance of indigenous vegetation of more than 1ha but less than 20 ha.

16

16

### 3. Permitting Process

A Basic Assessment Process is therefore proposed for the Project



### Listed Activities (Cont.)

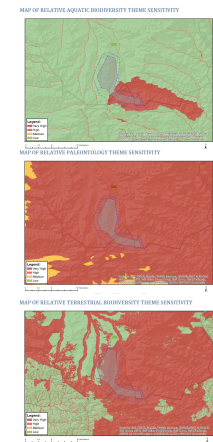
- Listing Notice 3 - GNR 324

LISTED ACTIVITY	DESCRIPTION OF PROJECT ACTIVITY
<b>Activity 4:</b> The development of a road wider than 4 metres with a reserve less than 13.5 metres. (i) Western Cape; (ii) areas outside urban areas (aa) containing indigenous vegetation	The transmission line routes traverse Critical Biodiversity Areas and fall within National Protected Areas Expansion Strategy Focus Areas. The transmission line may require an access road (of approximately 4 m in width) although it will likely be a two-track road. This activity is potentially triggered by the proposed construction of the transmission infrastructure.
<b>Activity 12 (i) (i) and (ii):</b> The clearance of an area of 300 square metres or more of indigenous vegetation. Except where such clearance of indigenous vegetation is required for maintenance purposes, undertaken in accordance with a maintenance management plan.  <b>Northern Cape</b> i. Within any critically endangered or endangered ecosystem listed in terms of section 52 of the NEMBA or prior to the publication of such a list, within an area that has been identified as critically endangered in the National Spatial Biodiversity Assessment 2004; ii. Within critical biodiversity areas identified in bioregional plans.	The transmission line routes traverse Critical Biodiversity Areas and fall within National Protected Areas Expansion Strategy Focus Areas. The construction of the common 132 kV on-site substation will require the clearance of more than 300 m² of indigenous vegetation. This activity is therefore triggered by the proposed construction of the transmission infrastructure.
<b>Activity 14 (ii) (a) and (c) (i) (i) (bb) and (ff):</b> The development of— (ii) infrastructure or structures with a physical footprint of 10 square metres or more; where such development occurs— (a) within a watercourse; or (c) if no development setback has been adopted, within 32 metres of a watercourse, measured from the edge of a watercourse;.  <b>Northern Cape</b> i. Outside urban areas; (bb) National Protected Area Expansion Strategy Focus areas; (ff) Critical biodiversity areas or ecosystem service areas as identified in systematic biodiversity plans adopted by the competent authority or in bioregional plans.	The transmission line routes traverse Critical Biodiversity Areas and fall within National Protected Areas Expansion Strategy Focus Areas.  The powerlines will require the erection of tower structures, which may require a construction area of approximately 100m². There is the potential that a tower structure or access road will transverse a watercourse (or drainage line). This activity is therefore triggered by the proposed construction of the transmission infrastructure.

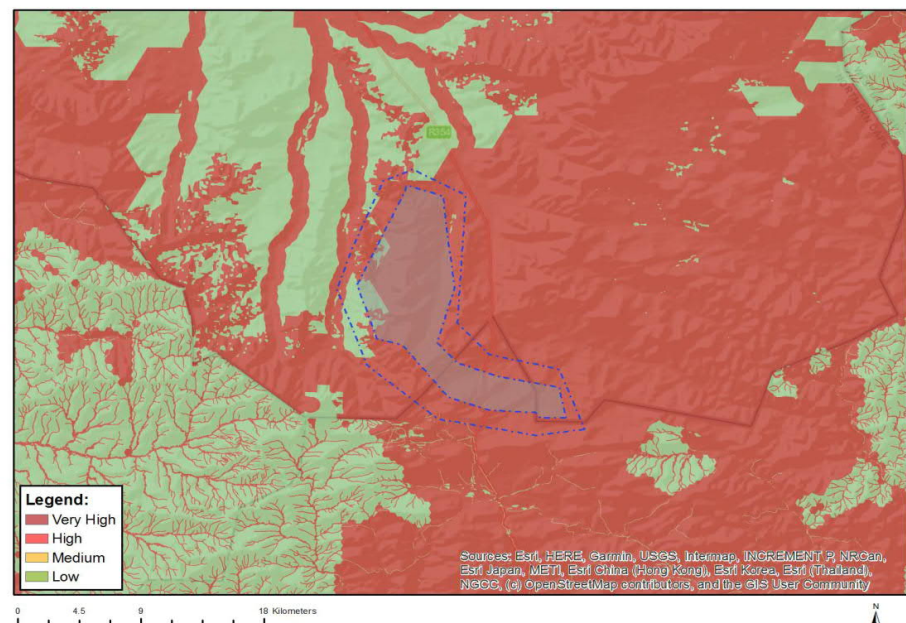
17

17

### 3. Permitting Process



### MAP OF RELATIVE TERRESTRIAL BIODIVERSITY THEME SENSITIVITY



18

18

### 3. Permitting Process



## DEA Screening Tool Specialist Assessments

- Agricultural
- Landscape/Visual
- Archaeological & Cultural Heritage
- Palaeontology
- Terrestrial Biodiversity
- Aquatic Biodiversity
- Avian
- Civil Aviation
- Radio Frequency Interference (RFI)
- Geotechnical
- Plant Species
- Animal Species

N o	Special ist assess- ment	Assessment Protocol
1	Agricultural Impact Assessment	<a href="https://screening.environment.gov.za/ScreeningDownloads/AssessmentProtocols/Gazetted_General_Agriculture_Assessment_Protocols.pdf">https://screening.environment.gov.za/ScreeningDownloads/AssessmentProtocols/Gazetted_General_Agriculture_Assessment_Protocols.pdf</a>
2	Landscape/Visual Impact Assessment	<a href="https://screening.environment.gov.za/ScreeningDownloads/AssessmentProtocols/Gazetted_General_Requirement_Assessment_Protocols.pdf">https://screening.environment.gov.za/ScreeningDownloads/AssessmentProtocols/Gazetted_General_Requirement_Assessment_Protocols.pdf</a>
3	Archaeological and Cultural Heritage Impact Assessment	<a href="https://screening.environment.gov.za/ScreeningDownloads/AssessmentProtocols/Gazetted_General_Requirement_Assessment_Protocols.pdf">https://screening.environment.gov.za/ScreeningDownloads/AssessmentProtocols/Gazetted_General_Requirement_Assessment_Protocols.pdf</a>
4	Palaeontology Impact Assessment	<a href="https://screening.environment.gov.za/ScreeningDownloads/AssessmentProtocols/Gazetted_General_Requirement_Assessment_Protocols.pdf">https://screening.environment.gov.za/ScreeningDownloads/AssessmentProtocols/Gazetted_General_Requirement_Assessment_Protocols.pdf</a>
5	Terrestrial Biodiversity Impact Assessment	<a href="https://screening.environment.gov.za/ScreeningDownloads/AssessmentProtocols/Gazetted_Terrestrial_Biodiversity_Assessment_Protocols.pdf">https://screening.environment.gov.za/ScreeningDownloads/AssessmentProtocols/Gazetted_Terrestrial_Biodiversity_Assessment_Protocols.pdf</a>
6	Aquatic Biodiversity Impact Assessment	<a href="https://screening.environment.gov.za/ScreeningDownloads/AssessmentProtocols/Gazetted_Aquatic_Biodiversity_Assessment_Protocols.pdf">https://screening.environment.gov.za/ScreeningDownloads/AssessmentProtocols/Gazetted_Aquatic_Biodiversity_Assessment_Protocols.pdf</a>
7	Avian Impact Assessment	<a href="https://screening.environment.gov.za/ScreeningDownloads/AssessmentProtocols/Gazetted_Avifauna_Assessment_Protocols.pdf">https://screening.environment.gov.za/ScreeningDownloads/AssessmentProtocols/Gazetted_Avifauna_Assessment_Protocols.pdf</a>
8	Civil Aviation Assessment	<a href="https://screening.environment.gov.za/ScreeningDownloads/AssessmentProtocols/Gazetted_Civil_Aviation_Installations_Assessment_Protocols.pdf">https://screening.environment.gov.za/ScreeningDownloads/AssessmentProtocols/Gazetted_Civil_Aviation_Installations_Assessment_Protocols.pdf</a>
9	RFI Assessment	<a href="https://screening.environment.gov.za/ScreeningDownloads/AssessmentProtocols/Gazetted_General_Requirement_Assessment_Protocols.pdf">https://screening.environment.gov.za/ScreeningDownloads/AssessmentProtocols/Gazetted_General_Requirement_Assessment_Protocols.pdf</a>
10	Geotechnical Assessment	<a href="https://screening.environment.gov.za/ScreeningDownloads/AssessmentProtocols/Gazetted_General_Requirement_Assessment_Protocols.pdf">https://screening.environment.gov.za/ScreeningDownloads/AssessmentProtocols/Gazetted_General_Requirement_Assessment_Protocols.pdf</a>
11	Plant Species Assessment	<a href="https://screening.environment.gov.za/ScreeningDownloads/AssessmentProtocols/Gazetted_Plant_Species_Assessment_Protocols.pdf">https://screening.environment.gov.za/ScreeningDownloads/AssessmentProtocols/Gazetted_Plant_Species_Assessment_Protocols.pdf</a>
12	Animal Species Assessment	<a href="https://screening.environment.gov.za/ScreeningDownloads/AssessmentProtocols/Gazetted_Animal_Species_Assessment_Protocols.pdf">https://screening.environment.gov.za/ScreeningDownloads/AssessmentProtocols/Gazetted_Animal_Species_Assessment_Protocols.pdf</a>

19

19

### 3. Permitting Process



## Specialist Studies Commissioned

SPECIALIST ASSESSMENT	COMMENT
Soils and Agricultural Potential Assessment	A soils and agricultural survey will be undertaken.
Archaeological and Cultural heritage Desktop Assessment	The powerline could potentially negatively impact on heritage and archaeological resources. An Archaeological and Heritage Impact Assessment will be undertaken.
Palaeontology	The powerline could potentially negatively impact on Palaeontological resources. A Palaeontological Impact Assessment will be undertaken.
Visual Impact Assessment	The powerline could potentially negatively impact sensitive visual receptors. A Visual Impact Assessment will therefore be undertaken.
Terrestrial Biodiversity Impact Assessment	A large portion of the route falls within a CBA and NPAES focus areas. A Terrestrial Biodiversity Assessment has therefore been included in the BA process.
Freshwater Impact Assessment	The proposed route falls within an FEPA. A Freshwater Impact Assessment will therefore be undertaken.
Avifauna Impact Assessment	Due to the potential impacts on birds as a result of the Overhead Powerline, an Avifauna Assessment will be undertaken as part of the BA Process.
Social Impact Assessment	A detailed social assessment will be prepared. The social statement will be based on a desktop review and telephonic interviews with key stakeholders.
Geotechnical	A desktop Geotechnical Assessment will be undertaken as part of the BA Process.
Traffic Assessment	A Traffic Assessment and a Traffic Management Plan will be compiled as part of the BA Process

20

20

### 3. Permitting Process

#### Specialist Studies NOT Commissioned

SPECIALIST ASSESSMENT	COMMENT
Geotechnical	A Detailed Geotechnical Assessment will not be undertaken as part of the BA Process as this will be undertaken during the design phase, once preferred bidder status is obtained.
RFI	A Radio Frequency Interference (RFI) Study will not be undertaken. During the previous EIA and BA processes the SKA-SA confirmed that the WEFs will have no impact on the SKA. SKA-SA as well as the South African Radio Astronomy Observatory (SARAO) will be engaged with as part of the Public Participation Process.
Civil Aviation	The Civil Aviation Authority will be included on the project stakeholder database. They will be informed of the proposed Project, and comment will be sought. An Application for the Approval of Obstacles will also be submitted to SACAA once preferred bidder status is obtained.



21

21

### 3. Permitting Process

#### Competent Authority

- Section 24C(2)(a) of NEMA
  - The Minister must be identified as the CA if the activity has implications for international environmental commitments or relations
- GN 779 of 01 July 2016
  - Identifies the Minister as the CA for the consideration and processing of environmental authorisations and amendments thereto for activities related the Integrated Resource Plan (IRP) 2010 – 2030
- DFFE is therefore deemed to be the Competent Authority



22

22



## 4. Public Participation Process



### Public Participation Plan

- Site notices:
  - English and Afrikaans
- Compilation and management of I&AP Database
- Written notification:
  - Owners and occupiers on or adjacent to the proposed project site
  - Municipality Ward Councillor
  - District Municipality
  - Relevant State Departments
- Advertisement (One English and one Afrikaans in local newspaper)
- Draft Report Review for 30 days
  - WSP on request
  - Online on the WSP website
  - WSP will confirm with local Public Libraries as to whether they are open and able to accept documents for public review
- No provision has been made for public or focus group meetings due to current COVID-19 restrictions.

23

23

## 5. Timeframes



- Basic Assessment
  - Falls within Central Strategic Transmission Corridor (GN 113)
  - Falls within the Komsberg REDZ (GN 114)
  - Authority decision making timeframe is 57 days
- Updated EMP and Final layout
  - Authority decision making timeframe is 30 days
- Part 1 Amendment (Karreebosch and Brandvalley)
  - Authority decision making timeframe is 30 days
  - The Part 1 Amendment Application for the Karreebosch WEF will be submitted after the appeal period for the amended EA (expected to be received by 15 October) has ended.
- Part 2 Amendment (Rietkloof)
  - Falls within the Komsberg REDZ (GN 114)
  - Authority decision making timeframe is 57 days

24

24

## 6. Questions and Discussion

wsp

25

25

## 7. Way forward

wsp

26



# PUBLIC PARTICIPATION PLAN FOR THE BASIC ASSESSMENT PROCESS FOR THE BON ESPIRANGE KOMSBERG 132KV POWERLINE, PART 2 AMENDMENTS AND UPDATING OF TWO ENVIRONMENTAL MANAGEMENT PROGRAMMES (EMPRS) FOR THE BRANDVALLEY AND RIETKLOOF WIND ENERGY FACILITIES (WEFS) AND THE UPDATING OF TWO EMPRS FOR THE BRANDVALLEY AND RIETKLOOF POWERLINES

DFFE REF NUMBER: 2021-09-0003

The restrictions enforced in terms of Government Gazette 43096 which placed the country in a national state of disaster limiting the movement of people to curb the spread of the COVID-19 Virus has placed some limitations on the commencement and continuation of the public consultation as part of an Environmental Impact Assessment (EIA) process. Considering these limitations, the following consultation process has been designed and will be implemented, on approval by the Department of Forestry, Fisheries and the Environment (DFFE), to cater for the facilitation of the public participation process (PPP). The PPP includes Interested and Affected Parties (I&APs), the competent authority, directly impacted landowners/occupiers, adjacent landowners/occupiers, relevant Organs of State departments, Municipalities, ward councillors and other key stakeholders and all other parties that may have interest on this project.

The Public Participation Plan is submitted as per the requirements of the General Provisions of Annexure 2 of the Regulations issued in terms of Section 27(2) of the Disaster Management Act, 2002 (Act No.57 of 2002) and published on 05 June 2020 in Government Notice No R560 of Government Gazette No 43412.

**It must be noted that both the Brandvalley and Rietkloof Wind Energy Facilities (WEFs) are confirmed Round 5 Preferred Bidder Projects.**

This plan has been developed for the following aspects of the Euronotus Complex Permitting requirements:

- Part 2 Amendment Applications together with the amendment of the Environmental Management Programmes (EMPrs) and layout plans as required by the environmental authorisations (EAs) for the Brandvalley WEF and Rietkloof WEF,
- The update of the Rietkloof and Brandvalley 132kV Powerline EMPrs as required by the relevant EAs (DEA Ref: 14/12/16/3/3/1/1590 and 14/12/16/3/3/1/1591 respectively); and
- A new Basic Assessment Application required for a new 132kV powerline to connect the existing Bon Espirange substation to the existing Komsberg substation.

According to Section (2)(4)(f) of the National Environmental Management Act (NEMA), the participation of all I&APs must be promoted and all potential I&APs must be informed early and in an informative and proactive way regarding applications that may affect their lives or livelihood in order to give effect to the above sections, and that it is essential to ensure that there is adequate and appropriate opportunity for public participation in decisions that may affect the environment.

The existing Rietkloof and Brandvalley Projects interested and affected party (I&AP) databases will also be utilised for the amendment processes. I&APs will be provided with opportunity to review and make comments on the amendment application.

**Table 1, Table 2 and Table 3** below, provide the competent authority with the detailed PPP that will be undertaken by the project.

Furthermore, the Stakeholder Databases for both the Rietkloof and Brandvalley WEFs are included in **Appendix A** as requested during the Pre-Application Meeting (held on 8 October 2021).

The Pavilion, 1st Floor  
Cnr Portswood and Beach Road, Waterfront  
Cape Town, 8001  
South Africa

T: +27 21 481 8700  
F: +086 606 7121  
[www.wsp.com](http://www.wsp.com)

**Table 1: Proposed Public Participation Plan – Part 2 Amendment Applications and the associated EMPr updates for Rietkloof and Brandvalley WEFs**

**SUMMARY OF PPP REQUIREMENT  
(GNR 326 OF EIA REGULATIONS)**

**PROPOSED PLAN/ACTIVITIES**

<p>41(2) The person conducting a PPP must give notice to all potential I&amp;APs by-</p> <p>(a) fixing a notice board at a place conspicuous to and accessible by the public at the boundary, on the fence or along the corridor of—</p> <p>(i) the site where the activity to which the application or proposed application relates is or is to be undertaken; and</p> <p>(ii) any alternative site;</p>	<ul style="list-style-type: none"> <li>— Placement of six (6) site notices (in English and Afrikaans) at appropriate locations on site and in the surrounding area.</li> <li>— This will include the boundary/access road to the WEFs, as well as additional public places within the project area, such as grocery stores, municipalities, and/or local public libraries.</li> </ul>
<p>(b) giving written notice, in any of the manners provided for in section 47D of the Act, to—</p> <p>(i) the occupiers of the site and, if the proponent or applicant is not the owner or person in control of the site on which the activity is to be undertaken, the owner or person in control of the site where the activity is or is to be undertaken and to any alternative site where the activity is to be undertaken;</p> <p>(ii) owners, persons in control of, and occupiers of land adjacent to the site where the activity is or is to be undertaken and to any alternative site where the activity is to be undertaken;</p> <p>(iii) the municipal councillor of the ward in which the site and alternative site is situated and any organisation of ratepayers that represent the community in the area;</p> <p>(iv) the municipality which has jurisdiction in the area;</p> <p>(v) any organ of state having jurisdiction in respect of any aspect of the activity; and</p> <p>(vi) any other party as required by the competent authority;</p>	<ul style="list-style-type: none"> <li>— Written notification (in English and Afrikaans) will be sent to owners and occupiers on or adjacent to the WEFs, municipality ward councillors, local and district municipalities, and relevant state departments.</li> <li>— General communication (written notification) with stakeholders (public and government departments/authorities) throughout the Part 2 and EMPr amendment processes.</li> <li>— Stakeholders will be added to the database on request as the project progresses.</li> </ul>
<p>(c) placing an advertisement in—</p> <p>(i) one local newspaper; or</p> <p>(ii) any official Gazette that is published specifically for the purpose of providing public notice of applications or other submissions made in terms of these Regulations;</p>	<p>An advert will be published in one provincial (Cape Times) and one local newspaper (Die Courier) (in English and Afrikaans), formally announcing the commencement of the Part 2 Amendment Applications and associated EMPr amendment processes, requesting stakeholders to register their interest in the project, and informing them of the release of the Draft Part 2 Amendment Reports and amended EMPrs for public review and comment.</p>
<p>(d) placing an advertisement in at least one provincial newspaper or national newspaper, if the activity has or may have an impact that extends beyond the boundaries of the metropolitan or district municipality in which it is or will be undertaken</p>	
<p>(e) using reasonable alternative methods, as agreed to by the competent authority, in those instances where a person is desirous of but unable to participate in the process due to—</p>	<ul style="list-style-type: none"> <li>— The existing databases for the Rietkloof WEF and Brandvalley WEF projects will be verified and updated for the purposes of the Part 2 Amendment and EMPr amendment processes. As part of the verification process, existing I&amp;APs will be contacted telephonically and asked to confirm their preferred method of</li> </ul>

## SUMMARY OF PPP REQUIREMENT (GNR 326 OF EIA REGULATIONS)

## PROPOSED PLAN/ACTIVITIES

<p>(i) illiteracy; (ii) disability; or (iii) any other disadvantage.</p>	<p>communication. The POPI act will also be put into consideration to confirm all the relevant POPI requirements for the database.</p> <ul style="list-style-type: none"> <li>— The relevant ward councillors will be contacted to ensure that community-based organisations are aware of the Project and can assist in distributing and communicating relevant Project information to community members.</li> <li>— No public meetings or focus group discussions have been provided for.</li> </ul>
<p>(42) A proponent or applicant must ensure the opening and maintenance of a register of interested and affected parties and submit such a register to the competent authority,</p>	<ul style="list-style-type: none"> <li>— Stakeholders with a potential interest in the Project will be identified at the outset of the Project. As noted above, the existing databases will be verified and updated for the purposes of the Part 2 Amendment and EMPr amendment processes. The database will also be updated to include landowners and other stakeholders relevant to the Projects.</li> <li>— All stakeholders identified will be registered on the project stakeholder database, and the database will be maintained throughout the BA and EMPr amendment processes.</li> </ul>
<p>(43) &amp; (44) Registered Interested and affected parties (I&amp;APs) must be given 30 days to comment on the draft Report</p>	<p>The Draft Amendment Reports and amended EMPrs will be made available to all stakeholders for a 30-day comment period. Strict adherence to all COVID-19 protocols and regulations as well as best practice measures will be ensured throughout PPP. As a result, the Draft BAR and amended EMPrs will be made available to stakeholders as follows:</p> <ul style="list-style-type: none"> <li>— Matjiesfontein Community Hall;</li> <li>— Laingsburg Public Library;</li> <li>— From WSP on request; and</li> <li>— Online on the WSP website</li> </ul> <p>At the time of disclosure, WSP will confirm the relevant COVID-19 protocols and regulations in place and <i>will confirm with the local libraries as to whether they are open and able to accept documents for public review prior to placement.</i></p> <p>A Comment and Response Report (CRR) will be generated for inclusion in Final Amendment Reports and amended EMPrs for consideration by the competent authority.</p>

Table 2: Proposed Public Participation Plan – Update of the Rietkloof and Brandvalley Powerline EMPs

**SUMMARY OF PPP REQUIREMENT  
(GNR 326 OF EIA REGULATIONS)**

**PROPOSED PLAN/ACTIVITIES**

<p>41(2) The person conducting a PPP must give notice to all potential I&amp;APs by-</p> <p>(a) fixing a notice board at a place conspicuous to and accessible by the public at the boundary, on the fence or along the corridor of—</p> <p>(i) the site where the activity to which the application or proposed application relates is or is to be undertaken; and</p> <p>(ii) any alternative site;</p>	<ul style="list-style-type: none"> <li>— Placement of six (6) site notices (in English and Afrikaans) at appropriate locations on site (at various points along the OHPL routes) and in the surrounding area.</li> <li>— This will include the boundary/access road to the site, as well as additional public places within the project area, such as grocery stores, municipalities, and/or local public library.</li> </ul>
<p>(b) giving written notice, in any of the manners provided for in section 47D of the Act, to—</p> <p>(i) the occupiers of the site and, if the proponent or applicant is not the owner or person in control of the site on which the activity is to be undertaken, the owner or person in control of the site where the activity is or is to be undertaken and to any alternative site where the activity is to be undertaken;</p> <p>(ii) owners, persons in control of, and occupiers of land adjacent to the site where the activity is or is to be undertaken and to any alternative site where the activity is to be undertaken;</p> <p>(iii) the municipal councillor of the ward in which the site and alternative site is situated and any organisation of ratepayers that represent the community in the area;</p> <p>(iv) the municipality which has jurisdiction in the area;</p> <p>(v) any organ of state having jurisdiction in respect of any aspect of the activity; and</p> <p>(vi) any other party as required by the competent authority;</p>	<ul style="list-style-type: none"> <li>— Written notification (in English and Afrikaans) will be sent to owners and occupiers on or adjacent to the proposed project sites, municipality ward councillors, local and district municipalities, and relevant state departments.</li> <li>— General communication (written notification) with stakeholders (public and government departments/authorities) throughout the EMP amendment processes.</li> <li>— Stakeholders will be added to the database on request as the project progresses.</li> </ul>
<p>(c) placing an advertisement in—</p> <p>(i) one local newspaper; or</p> <p>(ii) any official Gazette that is published specifically for the purpose of providing public notice of applications or other submissions made in terms of these Regulations;</p>	<p>An advert will be published in one provincial (Cape Times) and one local newspaper (Die Courier) (in English and Afrikaans), formally announcing the commencement of the EMP amendment process, requesting stakeholders to register their interest in the project, and informing them of the release of the Draft amended EMPs for public review and comment.</p>
<p>(d) placing an advertisement in at least one provincial newspaper or national newspaper, if the activity has or may have an impact that extends beyond the boundaries of the metropolitan or district municipality in which it is or will be undertaken</p>	
<p>(e) using reasonable alternative methods, as agreed to by the competent authority, in those instances where a person is desirous of but unable to participate in the process due to—</p> <p>(i) illiteracy;</p>	<ul style="list-style-type: none"> <li>— The existing databases for the Rietkloof OHPL and Brandvalley OHPL projects will be verified and updated for the purposes of the EMP amendment processes. As part of the verification process, existing I&amp;APs will be contacted telephonically and asked to confirm their preferred method of communication. The POPI act will also be put into consideration to confirm all the relevant POPI requirements for the database.</li> </ul>



## SUMMARY OF PPP REQUIREMENT (GNR 326 OF EIA REGULATIONS)

## PROPOSED PLAN/ACTIVITIES

<p>(ii) disability; or (iii) any other disadvantage.</p>	<ul style="list-style-type: none"> <li>— The relevant ward councillors will be contacted to ensure that community-based organisations are aware of the Project and can assist in distributing and communicating relevant Project information to community members.</li> <li>— No public meetings or focus group discussions have been provided for.</li> </ul>
<p>(42) A proponent or applicant must ensure the opening and maintenance of a register of interested and affected parties and submit such a register to the competent authority,</p>	<ul style="list-style-type: none"> <li>— Stakeholders with a potential interest in the Project will be identified at the outset of the Project. As noted above, the existing databases will be verified and updated for the purposes of the EMPr amendment processes. The database will also be updated to include landowners and other stakeholders relevant to the Projects.</li> <li>— All stakeholders identified will be registered on the project stakeholder database, and the database will be maintained throughout the EMPr amendment processes.</li> </ul>
<p>(43) &amp; (44) Registered Interested and affected parties (I&amp;APs) must be given 30 days to comment on the draft Report</p>	<p>The Draft amended EMPs will be made available to all stakeholders for a 30-day comment period. Strict adherence to all COVID-19 protocols and regulations as well as best practice measures will be ensured throughout PPP. As a result, the Draft amended EMPs will be made available to stakeholders as follows:</p> <ul style="list-style-type: none"> <li>— Matjiesfontein Community Hall;</li> <li>— Laingsburg Public Library;</li> <li>— From WSP on request; and</li> <li>— Online on the WSP website.</li> </ul> <p>At the time of disclosure, WSP will confirm the relevant COVID-19 protocols and regulations in place and <i>will confirm with the local libraries as to whether they are open and able to accept documents for public review prior to placement.</i></p> <p>A Comment and Response Report (CRR) will be generated for inclusion in Final BAR and amended EMPs for consideration by the competent authority.</p>

Table 3: Proposed Public Participation Plan – Bon Espirange Komsberg 132kV Powerline Basic Assessment Process

**SUMMARY OF PPP REQUIREMENT  
(GNR 326 OF EIA REGULATIONS)**

**PROPOSED PLAN/ACTIVITIES**

<p>41(2) The person conducting a PPP must give notice to all potential I&amp;APs by-</p> <p>(a) fixing a notice board at a place conspicuous to and accessible by the public at the boundary, on the fence or along the corridor of—</p> <p>(i) the site where the activity to which the application or proposed application relates is or is to be undertaken; and</p> <p>(ii) any alternative site;</p>	<ul style="list-style-type: none"> <li>— Placement of six (6) site notices (in English and Afrikaans) at appropriate locations on site (at various points along the proposed OHPL route) and in the surrounding area.</li> <li>— This will include the boundary/access road to the substation sites, as well as additional public places within the project area, such as grocery stores, municipalities, and/or local public library.</li> </ul>
<p>(b) giving written notice, in any of the manners provided for in section 47D of the Act, to—</p> <p>(i) the occupiers of the site and, if the proponent or applicant is not the owner or person in control of the site on which the activity is to be undertaken, the owner or person in control of the site where the activity is or is to be undertaken and to any alternative site where the activity is to be undertaken;</p> <p>(ii) owners, persons in control of, and occupiers of land adjacent to the site where the activity is or is to be undertaken and to any alternative site where the activity is to be undertaken;</p> <p>(iii) the municipal councillor of the ward in which the site and alternative site is situated and any organisation of ratepayers that represent the community in the area;</p> <p>(iv) the municipality which has jurisdiction in the area;</p> <p>(v) any organ of state having jurisdiction in respect of any aspect of the activity; and</p> <p>(vi) any other party as required by the competent authority;</p>	<ul style="list-style-type: none"> <li>— Written notification (in English and Afrikaans) will be sent to owners and occupiers on or adjacent to the proposed project site, municipality ward councillor, local and district municipality, and relevant state departments.</li> <li>— General communication (written notification) with stakeholders (public and government departments/authorities) throughout the Basic Assessment (BA) process.</li> <li>— Stakeholders will be added to the database on request as the project progresses.</li> </ul>
<p>(c) placing an advertisement in—</p> <p>(i) one local newspaper; or</p> <p>(ii) any official Gazette that is published specifically for the purpose of providing public notice of applications or other submissions made in terms of these Regulations;</p>	<p>An advert will be published in on provincial (Cape Times) and two local newspapers (Die Noordwester and Die Courier) (in English and Afrikaans), formally announcing the commencement of the Environmental Authorisation (EA) application process, requesting stakeholders to register their interest in the project, and informing them of the release of the Draft BAR for public review and comment.</p>
<p>(d) placing an advertisement in at least one provincial newspaper or national newspaper, if the activity has or may have an impact that extends beyond the boundaries of the metropolitan or district municipality in which it is or will be undertaken</p>	
<p>(e) using reasonable alternative methods, as agreed to by the competent authority, in those instances where a person is desirous of but unable to participate in the process due to—</p> <p>(i) illiteracy;</p>	<ul style="list-style-type: none"> <li>— The existing databases for the Karreebosch WEF project will be verified and updated for the purposes of the BA process. As part of the verification process, existing I&amp;APs will be contacted telephonically and asked to confirm their preferred method of communication. The POPI act will also be put into consideration to confirm all the relevant POPI requirements for the database.</li> </ul>



## SUMMARY OF PPP REQUIREMENT (GNR 326 OF EIA REGULATIONS)

## PROPOSED PLAN/ACTIVITIES

<p>(ii) disability; or (iii) any other disadvantage.</p>	<ul style="list-style-type: none"> <li>— The relevant ward councillors will be contacted to ensure that community-based organisations are aware of the Project and can assist in distributing and communicating relevant Project information to community members.</li> <li>— No public meetings or focus group discussions have been provided for.</li> </ul>
<p>(42) A proponent or applicant must ensure the opening and maintenance of a register of interested and affected parties and submit such a register to the competent authority,</p>	<ul style="list-style-type: none"> <li>— Stakeholders with a potential interest in the Project will be identified at the outset of the Project. As noted above, the existing databases will be verified and updated for the purposes of the BA process. The database will also be updated to include landowners and other stakeholders relevant to the Project.</li> <li>— All stakeholders identified will be registered on the project stakeholder database, and the database will be maintained throughout the BA process.</li> </ul>
<p>(43) &amp; (44) Registered Interested and affected parties (I&amp;APs) must be given 30 days to comment on the draft Report</p>	<p>The Draft BAR will be made available to all stakeholders for a 30-day comment period. Strict adherence to all COVID-19 protocols and regulations as well as best practice measures will be ensured throughout PPP. As a result, the Draft BAR will be made available to stakeholders as follows:</p> <ul style="list-style-type: none"> <li>— Matjiesfontein Community Hall;</li> <li>— Laingsburg Public Library;</li> <li>— From WSP on request; and</li> <li>— Online on the WSP website.</li> </ul> <p>At the time of disclosure, WSP will confirm the relevant COVID-19 protocols and regulations in place and <i>will confirm with the local libraries as to whether they are open and able to accept documents for public review prior to placement.</i></p> <p>A Comment and Response Report (CRR) will be generated for inclusion in Final BAR and amended EMPs for consideration by the competent authority.</p>

## APPENDIX A – STAKEHOLDER DATABASES

The databases presented below outline the key stakeholders and landowners included on the existing databases. Additional registered I&APs include individuals and community members, these are not presented below.

### RIETKLOOF WEF

Land Owners	Property
Ou Mure	1/74
Fortuin	3/74 and RE/74
Barendskraal	1/76
Hartjieskraal	1/77
Hartjieskraal	RE/77
Nuwerus	RE/284
Wilgehout Fontein	RE/87
Vogelstruisfontein	81
Rietkloof Annexe	1/88
Snyders Kloof	RE/80
Snyders Kloof	1/80
Neighbours	Property
Hasjes Vley	RE/162
Barendskraal	RE/76
Ou Mure	Re/74
Kabeltouw	160
Brandvalley	RE/75
Bon Espirange	RE/73
Bon Espirange	Jan-73
Aprilskraal	105
Aurora	285
Wilgehout Fontein	2/87
Doorn Kloof	100
Rietkloof (De Rante)	1/89 + RE/88
De Rante / Blitskolk	RE/89
Annex Vogelstruisfontein	90
Palmiet Fontein / Vrede	1/91
Drie Koppen	RE/92
Luipaards Kloof	RE/79

Organs of State	
DEA: Integrated Environmental Authorisations	
DEA: Biodiversity and Conservation Unit	
DEADP: Development Management Region 3	
DEADP	
DEADP	
DEADP	
DEADP: Waste Management	
DEADP: Air Quality Management	
DEADP: Road Network Management	
DENC	Officer
Department of Defence/ SA Army	Signal Formation
Department of Water & Sanitation (DWS)	
Department of Water & Sanitation (DWS)	Chief Director
Department of Agriculture, Forestry and Fisheries (DAFF)	
Western Cape Department of Agriculture	
Western Cape Department of Agriculture	
Department of Agriculture, Forestry and Fisheries (DAFF)	Delegate of the Minister (Act 70 of 1970 )
Department of Agriculture, Forestry and Fisheries (DAFF)	AgriLand Liaison office
Department of Energy (DoE)	Director: Renewable Energies
Department of Economic Development and Tourism	
	Head of Department
Department: Science & Technology	Eskom
Department of Mineral Resources (Western Cape)	Regional Manager
Department of Transport	Directorate: Environmental Analysis
Department of Rural Development and Land Reform	
Central Karoo District Municipality (Laingsburg)	Municipal Manager
Laingsburg Local Municipality	Head of Technical Department
Laingsburg Local Municipality	Municipal Manager
Ward	Ward 12 Councilor (Witzenberg)
Ward	Ward 1 Councilor (Laingsburg)
Cape Nature	
Heritage Western Cape	
Heritage Western Cape (Assistant Director)	Department of Cultural Affairs and Sport
CAA	Aviation Obstacle Analyst
Astronomy Management Authority	Deputy Director
SAAO (South African Astronomical Observatory)	Director
SAAO (South African Astronomical Observatory)	Telescope Operations (TOPS)
SALT (The Southern African Large Telescope)	
SKA (Square Kilometer Array)	Head of Strategy
SKA (Square Kilometer Array)	GIF Specialist
CAA	
CAA	
Senior Consultant Environmental Management: Eskom GC: Land Development	
Department of Public Works	Director General Office
Department of Public Works	Chief Directorate:
Department of Public Works	Chief Directorate
Western Cape Department of Transport and Public Works (Road Network Management)	
Western Cape Department of Transport and Public Works (Road Network Management)	
Western Cape Department of Transport and Public Works (Road Network Management)	
Western Cape Department of Transport and Public Works (Road Network Management)	
South African National Roads Agency	Regional Manager: Western Region
ATNS	Manager of the Western and Northern Cape

Other Key Stakeholders	
Eskom	Land and development
Witteberg Private Nature Reserve	Private Nature Game Reserve
Laingsburg Tourism	IDP Officer
Farmer's Association	Senior Media Liaison Officer
EWT	Renewable Energy Project Manager
Birdlife	BirdLife
SAWS - south african weather SA	
Sentech	
SANRAL	
Falcon Oil and Gas Ltd	
Falcon Oil and Gas Ltd	
Western Cape Black Eagle Project	
Telkom (Network Engineering)	Operations Manager: Wayleave Management
Telkom (National Radio Site Engineering )	
MTN	MTN – Innovation Centre Engineering
Vodacom	Network
BreedeNet	Network Operations Director
Cell C	
The Chairman: Rietpoort Trust	
Polmiet Fontein	
Environmental Coordinator, SANRAL	
System Specialist Radar   Technical Services Cape Town International Airport	
Manager: Technical Support   Technical Services Cape Town International Airport	
Roggeveld Wind Power (Pty) Ltd	
Professional Valuer	
BioTherm Energy (Pty) Ltd	
Breede-Gouritz Catchment Management Agency	
Breede-Gouritz Catchment Management Agency	
Vodacom	
JO KROUKAMP	
G7 Energies	
G7 Energies	
ACED	
G7 Energies	
G7 Energies	
Mainsteam	
AVDS Environmental Consultants	
ENERCON	

## BRANDVALLEY WEF

Land Owners	Farm Name	Property
Ou Mure Boerdery c/o Polla van der Westhuizen	Ou Mure	1/74
A D V Le Roux Family Trust	Fortuin	1/75, 3/74 and RE/74
Francois Conradie	Brandvalley	RE/75
JJ le Roux Familie Trust	Rietfontein	197
Marianne Thomson	Kabeltouw	160
Ou Mure Boerdery c/o Polla van der Westhuizen	Barendskraal	RE/76
Mooi Nooientjies Trust c/o Christo Matthee	Barendskraal	1/76
Van Der Vyver (CJ) Trust c/o Izaak (Sakkie) van der Vyver / Christiaan van der Vyver	Muishond Rivier	RE/161
Kabeltouw Trust c/o Marianne Thomson and Cornelius von der Heyden	Muishond Rivier	1/161

Adjacent Landowners	Farm Name	Property
Charl Gerhardus du Plessis	Oude Huis	RE/195
A D V Le Roux Family Trust	Klipbanksfontein	RE/198
Douglas & Esme Calldo	Bon Espirange	1 of 73, 1/199
	Aprilskraal	105
Marina Conradie	Bon Espirange	RE/73, RE/199
Gielie Hanekom Family Trust c/o Gielie	Aurora	285
ZB Loots Familie Trust c/o Ziegfriedt Loots	Nuwerus	RE/284
Du Toit Thiersen (Pty) Ltd c/o Johan du Toit	Hartjieskraal	1/77
Ernest Marais	Hartjieskraal	RE/77
Turn Around Trading 101 (Pty) Ltd	Luipaards Kloof	RE/79
Nico van der Merwe	Hasjes Vley	RE/162
D.R VD Walt or John H Hamman	Klipbanks Fontein	395
Hendrik Jakobus Visser	Oliviers Berg	RE/159
P U UYS FamilieTrust	Oliviers Berg	1/159
J & B Trust	Karree Kloof	RE/196
Charl Gerhardus du Plessis	Karree Kloof	1/196

Commenting Authority	
DFFE	Case Officer
DEADP	Director: Development Facilitation
DEADP	Region 2
DEADP	Region 3
DENC	Officer
Department of Defence/ SA Army	Signal Formation
Department of Water & Sanitation (DWS)	
Department of Agriculture, Forestry and Fisheries (DAFF)	
Western Cape Department of Agriculture	
Western Cape Department of Agriculture	
Department of Agriculture, Forestry and Fisheries (DAFF)	Delegate of the Minister (Act 70 of 1970 )
Department of Agriculture, Forestry and Fisheries (DAFF)	AgriLand Liaison office
Department of Energy (DoE)	Director: Renewable Energies
Department of Economic Development and Tourism	Head of Department
Department: Science & Technology	Eskom
Department of Mineral Resources (Western Cape)	Regional Manager
Department of Mineral Resources (Northern Cape)	Regional Manager
Department of Transport	Directorate: Environmental Analysis
Department of Environment and Nature Conservation (DENC)	Assistant Director: Impact Management
Department of Rural Development and Land Reform	
Namakwa District Municipality (Karoo)	Municipal Manager
Cape Winelands District Municipality (Witzenberg )	
Central Karoo District Municipality (Laingsburg)	Municipal Manager
Witzenberg (Ceres) Local Municipality	Secretary: Executive Services
Laingsburg Local Municipality	Municipal Manager
Ward	Ward 12 Councilor (Witzenberg)
Karoo Hoogland Local Municipality	Municipal Manager
Ward	Ward 4 Councilor (Witzenberg)
Ward	Ward 3 Councilor (Karoo Hoogland)
Ward	Ward 1 Councilor (Laingsburg)
Cape Nature	
CapeNature	
SAHRA	Heritage
Northern Cape Provincial Heritage Resource Authority	
Heritage Western Cape (Assistant Director)	Department of Cultural Affairs and Sport
SAAO (South African Astronomical Observatory)	Telescope Operations (TOPS)
SALT (The Southern African Large Telescope)	
SKA (Square Kilometer Array)	Head of Strategy
SKA (Square Kilometer Array)	GIF Specialist
CAA	
CAA	
Senior Consultant Environmental Management: Eskom GC: Land Development	
ATNS	Manager of the Western and Northern Cape

Key Stakeholders	
Eskom	Land and development
Witteberg Private Nature Reserve	Private Nature Game Reserve
Laingsburg Tourism	IDP Officer
Farmer's Association	Senior Media Liaison Officer
EWT	Renewable Energy Project Manager
Birdlife	BirdLife
SAWS - south african weather SA	
Sentech	
SANRAL	
Falcon Oil and Gas Ltd	
Falcon Oil and Gas Ltd	
Telkom (Network Engineering)	Operations Manager: Wayleave Management
Telkom (National Radio Site Engineering )	
MTN	MTN – Innovation Centre Engineering
Vodacom	Network
BreedeNet	Network Operations Director
Cell C	
The Chairman: Rietpoort Trust	
Managing Trustee: Rietpoort Trust	
Polmiet Fontein	
Environmental Coordinator, SANRAL	
Obstacle Evaluator   COO - Air Traffic Services	
Manager: Technical Support   Technical Services Cape Town International Airport	
Roggeveld Wind Power (Pty) Ltd	
Professional Valuer	
BioTherm Energy (Pty) Ltd	
Terra-Foundcc	
Breede-Gouritz Catchment Management Agency	
Breede-Gouritz Catchment Management Agency	
Vodacom	
JO KROUKAMP	
ENERCON	
Building Energy South Africa (PTY) LTD	
Building Energy South Africa (PTY) LTD	
Building Energy South Africa (PTY) LTD	Environmental, Legal Compliance Manager
Zeekoeigat	
Boelhouer/Doornkloof	
Rietfontein	
Rietfontein	
Aasvoelbos	
Jagerskraal 95	
Geelhoek	
Paalfontein / Keurkloof	
Driekoppen	
Luiperdskloof	
Patatsrivier	
Tswaing	
Grootwater	
Boelhouer/Doornkloof	
AVDS Environmental Consultants	Representing: Mr. Warren Petterson, Mr. Steve Swanepoel, and Mr. Stephan Pienaar

## RIETKLOOF AND BRANDVALLEY GRID

Land Owners	
Name	Affiliation
Standvastigheid Familie Trust	Standvastigheid
Douglas & Esme Calldo	Bon Espirange
A D V Le Roux Family Trust c/o Andries Le Roux	Fortuin
A D V Le Roux Family Trust c/o Andries Le Roux	Fortuin
A D V Le Roux Family Trust c/o Andries Le Roux	Brandvalley
Mooi Nooientjies Trust c/o Christo Matthee	Barendskraal
Du Toit Thiersen (Pty) Ltd c/o Johan du Toit	Hartjieskraal
Ernest Marais	Hartjieskraal
Douglas & Esme Calldo	Aprils Kraal
Kabeltouw Trust c/o Marianne Thomson	Kabeltouw
Marina Conradie	Bon Espirange
Ou Mure Boerdery c/o Polla van der Westhuizen	Ou Mure
Francois Conradie / Marina Conradie (wife)	Brandvalley
Mooi Nooientjies Trust c/o Christo Matthee	Barendskraal
ZB Loots Familie Trust / Ziegfriedt Loots	Nuwerus
Neighbours	
Name	Affiliation
Sitruspoort Trust (Johan Kriel)	Vogelstruisfontein
Gielie Hanekom Family Trust c/o Gielie	Aurora
Kabeltouw Trust c/o Marianne Thomson	Muishond Rivier
Douglas & Esme Calldo	Ek Kraal
Rhyno Johannes Gouws	Rietkloof Annexe
same as above	same as above
Ockert Gerbrandt Conradie	Wolwekop Trust
Thomas Stephanus & Johannes Freysen	Aanstoot
Wilhelm Du Plessis Theron	
WOLWEKOP TRUST	RHEEBOKKE FONTEIN
Van Der Vyver (CJ) Trust c/o Izaak (Sakkie) van der Vyver / Christiaan van der Vyver	Muishond Rivier
Nico van der Merwe	Hasjes Vley
JJ le Roux Familie Trust c/o Kobus le Roux: 197 Rietfontein	Rietfontein
Marina Conradie	Ek Kraal
Standvastigheid Familie Trust/ Francois Conradie	Appels Fontein
Rudolf Rix Familie Trust (Rudolph Rix)	Smitskraal
Marna Rix	Smitskraal
Olaf Badenhorst - Huurder	Smitskraal
LE ROUX FAMILIETRUST / Mrs Alta le Roux	LEEUVENFONTEIN
Ou Mure Boerdery c/o Polla van der Westhuizen	Barendskraal
Turn Around Trading 101 (Pty) Ltd	Luipaards Kloof
Fantique Trade 379 CC c/o Dr. Jaco Terblanche	Snyders Kloof
Wilhelm Theron	Wilgehout Fontein
Organisation	
Department of Environmental Affairs (DEA)	Case officer
Department of Environmental Affairs (DEA)	Case officer
Department of Environmental Affairs (DEA)	Acting Chief Director: information management
Department of Environmental Affairs (DEA)	
Department of Environmental Affairs (DEA)	
Department of Environmental Affairs (DEA)	DEA: Biodiversity Section
DEA&DP Generic	FOH - Cape Town
Department of Environmental Affairs And Development Planning (DEADP)	Directorate: Development Facilitation
Department of Environmental Affairs And Development Planning (DEADP)	
Department of Environmental Affairs and Development Planning (DEADP)	
Department of Environmental Affairs And Development Planning (DEADP)	
Department of Environment and Nature Conservation (DENC)	Assistant Director: Impact Management
Department of Environment and Nature Conservation (DENC)	Personal Assistant to Mr Fisher
Department of Environment and Nature Conservation (DENC)	Director: Environmental Quality Management



Organisation	
Department of Water & Sanitation (DWS)	
DWS DG Generic	Deputy Information Officer: Director General Office
Department of Agriculture, Forestry and Fisheries (DAFF)	
Department of Agriculture, Forestry and Fisheries (DAFF)	Delegate of the Minister
Department of Agriculture, Forestry and Fisheries (DAFF)	AgriLand Liaison Officer
Agriculture, Land Reform and Rural Development (Northern Cape) via Namakwa DM	
Western Cape Department of Agriculture	
Western Cape Department of Agriculture	
Department of Energy (DoE)	Director: Renewable Energies
Department of Economic Development and Tourism (Western Cape)	Head of Department
Department: Science & Technology	
Department of Mineral Resources (Northern Cape)	Regional Manager
Department of Mineral Resources (Western Cape)	Regional Manager
Organisation	
Northern Cape Economic Development Agency (NCEDA)	Secretary
Matjiesfontein Village - The Lord Milner Hotel	General contact - FoH
Namakwa District Municipality (Karoo)	Municipal Manager
Cape Winelands District Municipality (Witzenberg )	
Central Karoo District Municipality (Laingsburg)	Municipal Manager
Witzenberg (Ceres) Local Municipality	
Laingsburg Local Municipality	
Karoo Hoogland Local Municipality	Municipal Manager
Ward	Ward 12 Councilor (Witzenberg)
Ward	Ward 3 Councilor (Karoo Hoogland)
Ward	Ward 1 Councilor (Laingsburg)
Cape Nature	Central Karoo & Eden District Municipal Areas
Heritage Western Cape	
Heritage Western Cape (Assistant Director)	Department of Cultural Affairs and Sport
Eskom Transmission Land Management	Investigations and Audit
Eskom	Land and development
Eskom Transmission	
SAHRA	General contact
SAHRA	Heritage
Witteberg Private Nature Reserve	Private Nature Game Reserve
South African Astronomical Observatory	Telescope Operations (TOPS)
SALT (The Southern African Large Telescope)	
SKA (Square Kilometer Array)	
Laingsburg Tourism	IDP Officer
Farmer's Association	Chief Executive Officer
Farmer's Association	Senior Media Liaison Officer
Renewable Energy Project Manager	EWT
BirdLife	BirdLife
Birdlife	BirdLife
ATNS	Manager of the Western and Northern Cape
WESSA	
SANRAL	
Telkom (Network Engineering)	Operations Manager: Wayleave Management
Telkom (National Radio Site Engineering )	
MTN	MTN – Innovation Centre Engineering
Vodacom	Network
BredeNet	Network Operations Director
Cell C	Senior Projects Manager
Falcon Oil and Gas Ltd	Financial Controller for Falcon
Falcon Oil and Gas Ltd	Local representative for Falcon based in Durbanville
Organisation	
Birdlife SA	General Manager
Birdlife SA	Policy and advocacy manager
Heritage Western Cape	
Heritage Western Cape	Assistant Director (Professional Services
Cape Nature	Central Karoo & Eden District Municipal Areas
ESKOM	
Falcon Oil and Gas Ltd	Financial Controller for Falcon
SAHRA	



## KARREEBOSCH GRID

Organisation	Department/Directorate	Designation	I&AP Sector
Abiance Trust IT 6383/1996			Agriculture & Farming
ACED		Executive	Renewable Energy Developer
ACED	Nxuba Wind Farm (RF) (Pty) Ltd	Director	Renewable Energy Developer
ADV Le Roux Familie Trust		Property Owner	Agriculture & Farming
ADV Le Roux Familie Trust		Property Owner	Agriculture & Farming
ADV Le Roux Familie Trust		Property Owner	Agriculture & Farming
African Wind Energy Association (AWEA)			Renewable Energy Association
Agri SA		President	Agriculture & Farming
Agri SA			Agriculture & Farming
Agri SA			Agriculture & Farming
Agri SA			Agriculture & Farming
Agri SA Western Cape		General Manager	Agriculture & Farming
Agri SA Western Cape		CEO	Agriculture & Farming
Agri SA Western Cape			Agriculture & Farming
Air Traffic and Navigation Services (ATNS)		Senior Manager: Communications, Navigation & Surveillance	Organs of State
Air Traffic and Navigation Services (ATNS)			Organs of State
BirdLife South Africa		Policy and Advocacy Manager	Nature and Conservation
BirdLife South Africa		Birds and Renewable Energy Manager	State owned Enterprise
Botanical Society of South Africa			Nature Conservation
BreedeNet Wireless Internet Solutions		Network Operations	Information Communications Technology
Building Energy			Independent Power Producer
Building Energy		Junior Developer	
Calldo Boerdery		Property Owner	Agriculture & Farming
Calldo Boerdery		Property Owner	Agriculture & Farming
Calldo Boerdery		Property Owner	Agriculture & Farming
Cape Bird Club		Chairperson: Conservation Committee	Nature Conservation
Cape Peninsula National Park		Park Manager	Nature Conservation
CapeNature Scientific Services			Organs of State
CapeNature Scientific Services	Scientific Services: Land Use Advice	Scientific Services: Land Use Advice	Organs of State
Central Karoo District Municipality		Municipal Manager	Organs of State
Cloete Family Trust		Trustee	Agriculture & Farming
De List Trust		Property Owner	Agriculture & Farming
De List Trust		Property Owner	Agriculture & Farming
De List Trust		Property Owner	Agriculture & Farming

Department of Agriculture, Forestry & Fisheries	AgriLand Liaison Office	Administration Clerk: National Office	Organ of State
Department of Agriculture, Forestry & Fisheries		Delegate to the Minister (Act 70 of 1970)	Organ of State
Department of Agriculture, Forestry & Fisheries			Organs of State
Department of Communications		Acting Director General	Organs of State
Department of Economic Development		Director General	Organs of State
Department of Energy		Director General	Organs of State
Department of Energy	Renewable Energy Initiatives	Acting Project Manager: Renewable Energy Initiatives	Organs of State
Department of Environmental Affairs	Strategic Infrastructure Developments	Assistant Director	Organs of State
Department of Environmental Affairs	Biodiversity and Conservation	Director: Biodiversity Conservation	Organ of State
Department of Environmental Affairs		Director: World Heritage Management	Project Steering Committee
Department of Mineral Resources		Regional Director	Organs of State
Department of Mineral Resources	Acting Regional Manager: Northern Cape - Kimberley	Acting Regional Manager	Organs of State
Department of Mineral Resources		Director General	Organs of State
Department of Public Works		Acting Director General	Organs of State
Department of Science and Technology	Astronomy Management Authority	Director: Astronomy Management Authority (AMA)	Organs of State
Department of Science and Technology			Organs of State
Department of Transport		Director General	Organs of State
Department of Transport		Director	Organs of State
Department of Water and Sanitation	Northern Cape	Acting Chief Director: Northern Cape	Organs of state
Department of Water and Sanitation		Resource Protection	Organs of State
Department of Water and Sanitation		EO	Organs of State
Department of Water and Sanitation		Chief Director: Western Cape Region	Organs of State
Department of Water and Sanitation	Northern Cape	Director Institutional Establishment	Organs of State
Department of Water and Sanitation		Case Officer	Organs of State
Department of Water and Sanitation		Acting Director General	Organs of State
Department of Water and Sanitation	Breede Gouritz CMA	Deputy Director: Breede-Gouritz CMA	Organs of State
Department of Water and Sanitation	Breede Gouritz CMA		Organs of State

Dirk van Zyl Trust			Agriculture & Farming
Dirk van Zyl Trust			Agriculture & Farming
Dirk van Zyl Trust			Agriculture & Farming
Earthlife Africa		Chairperson	Nature Conservation
Earthlife Africa			Nature Conservation
Elandsfontein Boerdery			Agriculture & Farming
Endangered Wildlife Trust	Wildlife & Energy Programme	Programme Manager	Nature & Conservation
Eskom Holdings SOC Ltd		Western Region Distribution	Organs of State
Eskom Holdings SOC Ltd	Eskom Telecommunications	Senior Engineer	Organs of State
Eskom Holdings SOC Ltd	GC Land Development	Senior Environmental Advisor	Organs of State
Eskom Holdings SOC Ltd		Planning Tools Applicator	Organs of State
Eskom Holdings SOC Ltd	Distribution Western Region	Senior Supervisor: Land & Rights	Organs of State
Eskom Holdings SOC Ltd			Organs of State
Eskom Holdings SOC Ltd		System Planning Manager Eskom Transmission	Organs of State
Eskom Holdings SOC Ltd	Western Region	Land Development Manager: Western Region	Organs of State
Eskom Holdings SOC Ltd	Western Operating Unit	Environmental Advisor	Organs of State
Falcon Oil & Gas Ltd.	Group Financial Controller	Group Financial Controller	Mining
G7 Renewable Energies			Renewable Energy Developer
Gielie Hanekom Familietrust		Property Owner	Agriculture & Farming
Greater Cape Town Civic Alliance (GCTCA)		Vice Chairperson	Civic Association
Grootwater Private Nature Reserve		Director	Nature Conservation
GVJ Electrical & Instrumentation Contractors (Pty) Ltd		Director	Construction
HWB Communications			Business
INCA Energy			Renewable Energy Developer
Independent Communications Authority of South Africa (ICASA)			Organs of State
JJ Le Roux Familie Trust		Property Owner	Agriculture & Farming
Kabeltouw Trust			Agriculture & Farming
Kannidood Project			Community Member
Kannidood Project		Manager	Community Member
Karoo Desert National Botanical Gardens		Director	Nature Conservation
Karoo Hoogland Local Municipality	Sutherland Region	Regional Manager	Organs of State
Karoo Hoogland Local Municipality	Ward 3	Ward Councillor: Ward 3	Organs of State
Karoo Hoogland Local Municipality		Municipal Manager	Organs of State
Laingsburg Local Municipality		Ward Councillor: Ward 1	Organs of State
Laingsburg Local Municipality		Environmental Officer	Organs of State
Laingsburg Local Municipality	Infrastructure	Manager: Infrastructure	Organs of State
Laingsburg Local Municipality		Municipal Manager	Organs of State
Laingsburg Tourism Office		Vice Chairperson	Tourism
Legal Resources Centre (LRC)			Law Practice
Macroplan Town and Regional Planners			Business
Mainstream Renewable Power South Africa		General Manager	Renewable Energy Developer
Monsters Mill		Senior Miller	Agriculture & Farming

Moyeng Energy (Pty) Ltd			Renewable Energy Developer
MTN Goup Limited		National Property Manager	Information and Communication Technology
Namakwa District Municipality	Municipal Manager	Municipal Manager	Organs of State
Namakwa District Municipality		Manager: Planning	Organs of State
National Energy Regulator of South Africa (NERSA)			Organs of State
National Energy Regulator of South Africa (NERSA)		Chief Executive Officer	Organs of State
Ngwao-Boswa Ya Kapa Bokone (Northern Cape Provincial Heritage Resources Authority)		Heritage Officer	Organs of state
Northern Cape Department of Agriculture, Land Reform & Rural Development		Head of Department: Agriculture	Organs of State
Northern Cape Department of Economic Development and Tourism		Head of Department	Organs of State
Northern Cape Department of Environment and Nature Conservation	Research and Development Support Section	District Ecologist: Candidate Scientist	Organs of State
Northern Cape Department of Environment and Nature Conservation	Environmental Quality Management	Director	Organ of State
Northern Cape Department of Environment and Nature Conservation	Research and Development Support Section	Production Scientist Grade B: Botanist	Organs of State
Northern Cape Department of Environment and Nature Conservation	Impact Management	Case Officer	Organs of State
Northern Cape Department of Environment and Nature Conservation			Organs of State
Northern Cape Department of Roads and Public Works		Head of Department	Organs of state
Northern Cape Department of Roads and Public Works	Northern Cape	Chief Director: Roads	Organs of State
Northern Cape Economic Development Agency		Project Manager: Agriculture	Organs of State
Ou Mure Boerdery (Pty) Ltd		Director	Agriculture & Farming
PJ Moller Trust		Property Owner	Agriculture & Farming
Rainmaker Energy			Renewable Energy Developer
Rietfontein Nature Reserve			Nature Conservation
Ronel Trust		Property Owner	Agriculture & Farming
Rudolf Rix Familie Trust		Property Owner	Agriculture & Farming
Sentech Ltd	Radio Frequency Network Planning	Manager: Radio Frequency Network Planning	Information Communications Technology
South African Astronomical Observatory	Telescope Operations	Director	Science and Technology
South African Bat Assessment Advisory Panel (SABAAP)			Nature and Conservation
South African Civil Aviation Authority	Aviation Obstacle and GIS	Obstacle Specialist	Organ of State
South African Defence Force		Lieutenant	Organs of State
South African Defence Force	Northern Cape	Commanding Officer: Signal	Organs of State
South African Heritage Resources Agency (SAHRA)		Heritage Officer: Northern Cape & North West Province	Heritage
South African National Parks	Park Planning and Wildlife Management	Senior General Manager	Organs of state
South African National Roads Agency Limited	Western Region	Statutory Control - Western Region	Organs of State
South African Weather Service		General Manager: Operations	Organs of State
Southern African Bird Atlas Project 2		Project Manager	Nature Conservation
Southern African Large Telescope		Mechanical Engineer	Science and Technology
Southern Right Developments			Renewable Energy Developer
Springbok Atlas			Tourism
Square Kilometre Array (SKA): South Africa		South African SKA Site Bid Manager	Organs of State
SRK Consulting (South Africa)	EAP - Falcon Oil & Gas	Principal Environmental Consultant	Environmental Consulting

Standvastigheid Familie Trust		Property Owner	Agriculture & Farming
Standvastigheid Familie Trust		Property Owner	Agriculture & Farming
Standvastigheid Familie Trust		Property Owner	Agriculture & Farming
Standvastigheid Familie Trust		Property Owner	Agriculture & Farming
Telkom SA Limited	Wayleave Management Office		Organ of State
Transnet Ltd		Environment Practitioner	Organs of State
Tuinplaas Trust		Property Owner	Agriculture & Farming
Van Der Vyver CJ Trust		Property Owner	Agriculture & Farming
Virginia Trust			Agriculture & Farming
Virginia Trust			Agriculture & Farming
Vodacom Group (Pty) Ltd		Signal Manager	Information and Communication Technology
Western Cape Department of Agriculture	Agriculture	Head of Department	Organs of State
Western Cape Department of Agriculture		Land Use Management	Organs of State
Western Cape Department of Economic Development and Tourism	Regional and Local Economic Development	Director: Regional and Local Economic Development	Organs of State
Western Cape Department of Economic Development and Tourism			Organs of State
Western Cape Department of Environmental Affairs and Development Planning			Organs of State
Western Cape Department of Environmental Affairs and Development Planning	Environmental Governance, Policy Coordination and Planning	Chief Director	Organs of State
Western Cape Department of Environmental Affairs and Development Planning	Environmental Affairs and Development Planning	Head of Department	Organs of State
Western Cape Department of Transport and Public Works		Head of Department	Organs of State
Western Cape Department of Transport and Public Works		Road Network Branch (Road Planning)	Organs of State
Western Cape Tourism			Tourism
Wildlife and Environment Society of South Africa (WESSA)		Chairperson	Environment & Conservation
Wildlife and Environment Society of South Africa (WESSA)	Western Cape	Regional Representative: Western Cape	Nature Conservation
Windlab Developments South Africa			Consultant
Witzenberg Properties (Pty) Ltd			Community Member
Wolwekop Trust		Property Owner	Agriculture & Farming
Wolwekop Trust		Property Owner	Agriculture & Farming
Wolwekop Trust		Property Owner	Agriculture & Farming
Wolwekop Trust		Property Owner	Agriculture & Farming
World Wide Fund South Africa		Chief Executive Officer	Non-governmental Organisations
ZB Loots Familie Trust			Agriculture & Farming

Strong, Ashlea

---

From: Juliet Mahlangu <JMMahlangu@dffe.gov.za>  
Sent: Friday, 19 November 2021 11:45  
To: Strong, Ashlea  
Cc: Zama Langa; Dr. Danie Smit  
Subject: Approval of Public Participation (PP) Plan for the proposed Bon Espirange Komsberg 132kv powerline

Dear Ms Ashlea

The Public Participation (PP) Plan for the proposed Bon Espirange Komsberg 132kv powerline, part 2 amendments and updating of two environmental management programmes (EMPRs) for the Brandvalley and Rietkloof wind energy facilities (WETs) and the updating of two EMPRs for the Brandvalley and Rietkloof powerlines, received by this Department on 16 November 2021, refers.

Based on the information provided this Department decided to approve the PP Plan for the proposed project. You may proceed with the PP process in accordance with tasks contemplated in the PP plan. Should you wish to deviate from the submitted PP Plan, the amended PP Plan must be submitted to the Department for approval prior commencement.

A copy of the PP Plan and this approval must be submitted as part of the application form when the application is lodged.

Also note that submission of a PP Plan and approval thereof do not negate your responsibility to comply with the requirements for public participation in terms of Regulations 39, 40, 41, 42, 43 & 44 of the EIA Regulations 2014, as amended.

Juliet Mahlangu  
Environmental Officer Specialised Production  
Chief Directorate Integrated Environmental Authorisation  
Department of Forestry, Fisheries and Environment  
Cell: 064 880 8742  
Tel: (012) 399 9320

