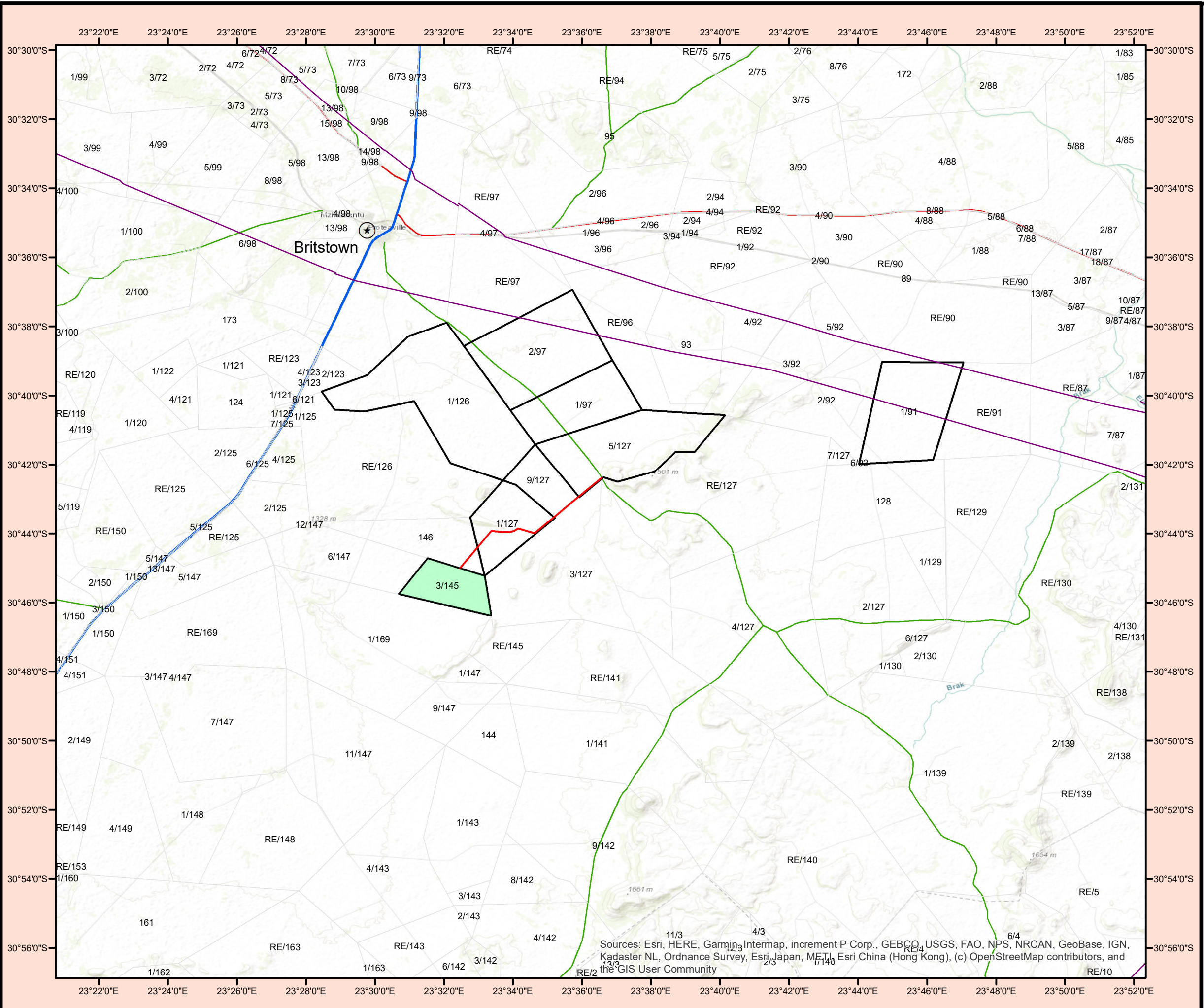


**EMTHANJENI LOCAL MUNICIPALITY
NORTHERN CAPE**

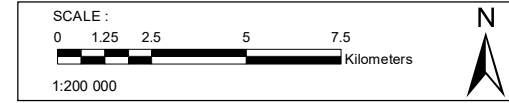
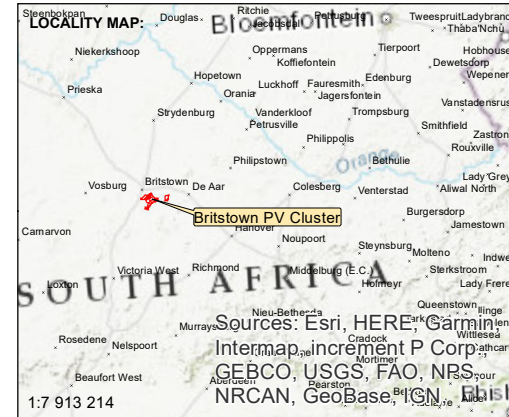
**BRITSTOWN PV CLUSTER
-
SOYUZ 1 PV
SOLAR PARK**

CADASTRAL MAP



Legend

- Electrical servitude line
- SOYUZ 1 - Affected Farm Portion
- Proposed SOYUZ 1 Access Road
- Britstown PV Cluster
- Central Places
- National Route
- Arterial Route
- Secondary Road



DATE: FEBRUARY 2023

MAP REFERENCE/ VERSION NUMBER:

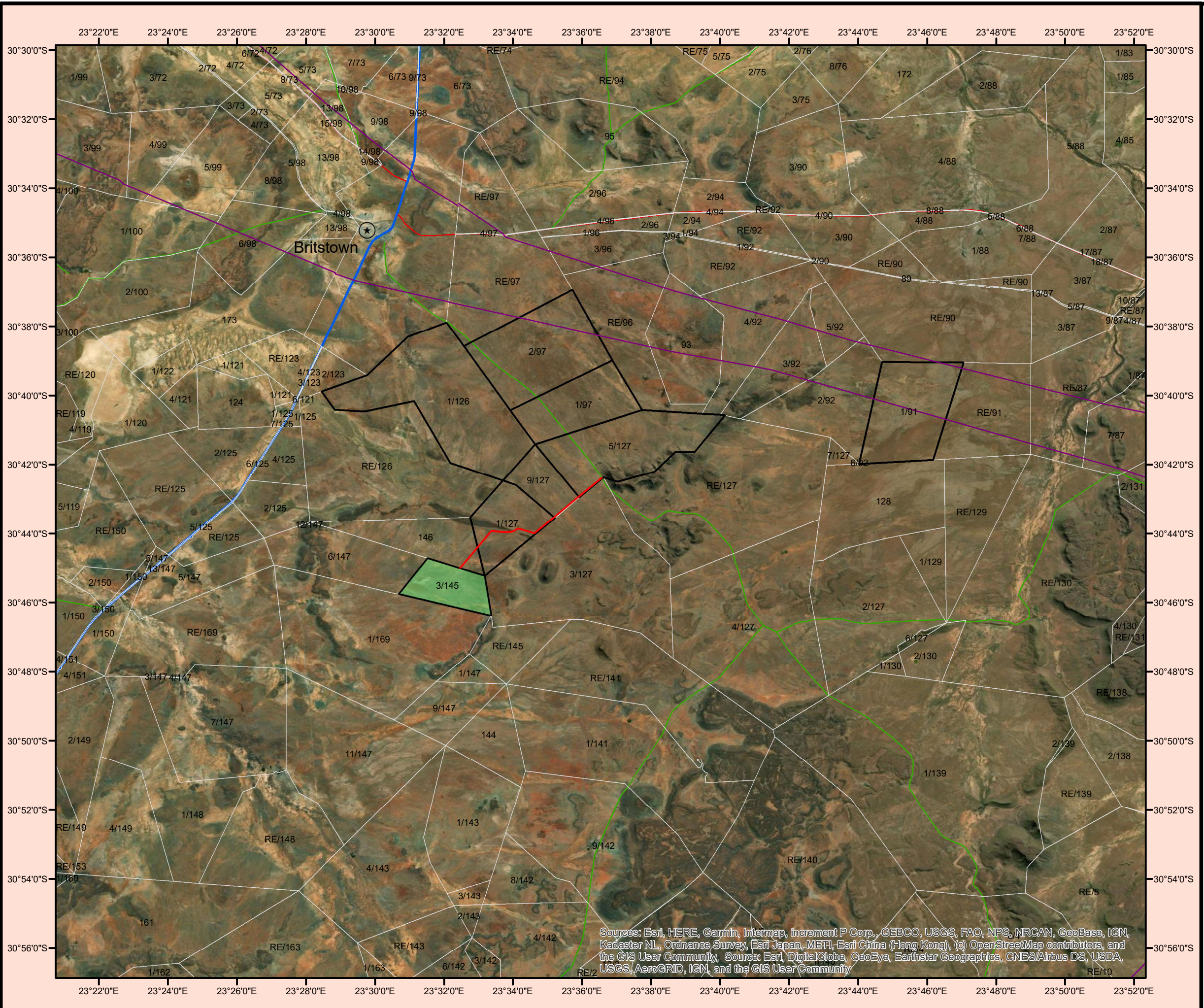
COORDINATE SYSTEM : Municipal WGS84 (Lo31)

PREPARED BY:

Warren Petterson Planning
1 Bridgeway, Business Centre
Century City, Cape Town
Matrix Building, 3rd Floor, Office 3H
7411

PO Box 152
Century City
7446

Tel : + 27 (0) 21 552 5255
Fax : + 27 (0) 86 537 9187
E-mail: andries@wppanning.co.za

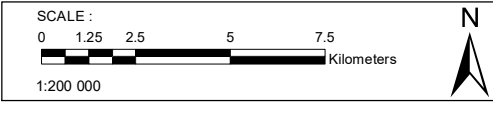
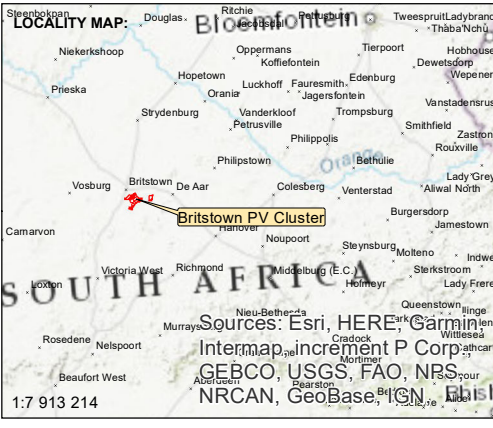


**EMTHANJENI LOCAL MUNICIPALITY
NORTHERN CAPE**

**BRITSTOWN PV CLUSTER
-
SOYUZ 1 PV
SOLAR PARK**

CADASTRAL MAP - AERIAL

- Legend**
- Electrical servitude line
 - SOYUZ 1 - Affected Farm Portion
 - Proposed SOYUZ 1 Access Road
 - Britstown PV Cluster
 - Central Places
 - National Route
 - Arterial Route
 - Secondary Road



DATE: FEBRUARY 2023

MAP REFERENCE/ VERSION NUMBER:

COORDINATE SYSTEM : Municipal WGS84 (Lo31)

PREPARED BY:

Warren Petterson Planning
1 Bridgeway, Business Centre
Century City, Cape Town
Matrix Building, 3rd Floor, Office 3H
7411

PO Box 152
Century City
7446

Tel : + 27 (0) 21 552 5255
Fax : + 27 (0) 86 537 9187
E-mail: andries@wppanning.co.za

Site Identification and Selection

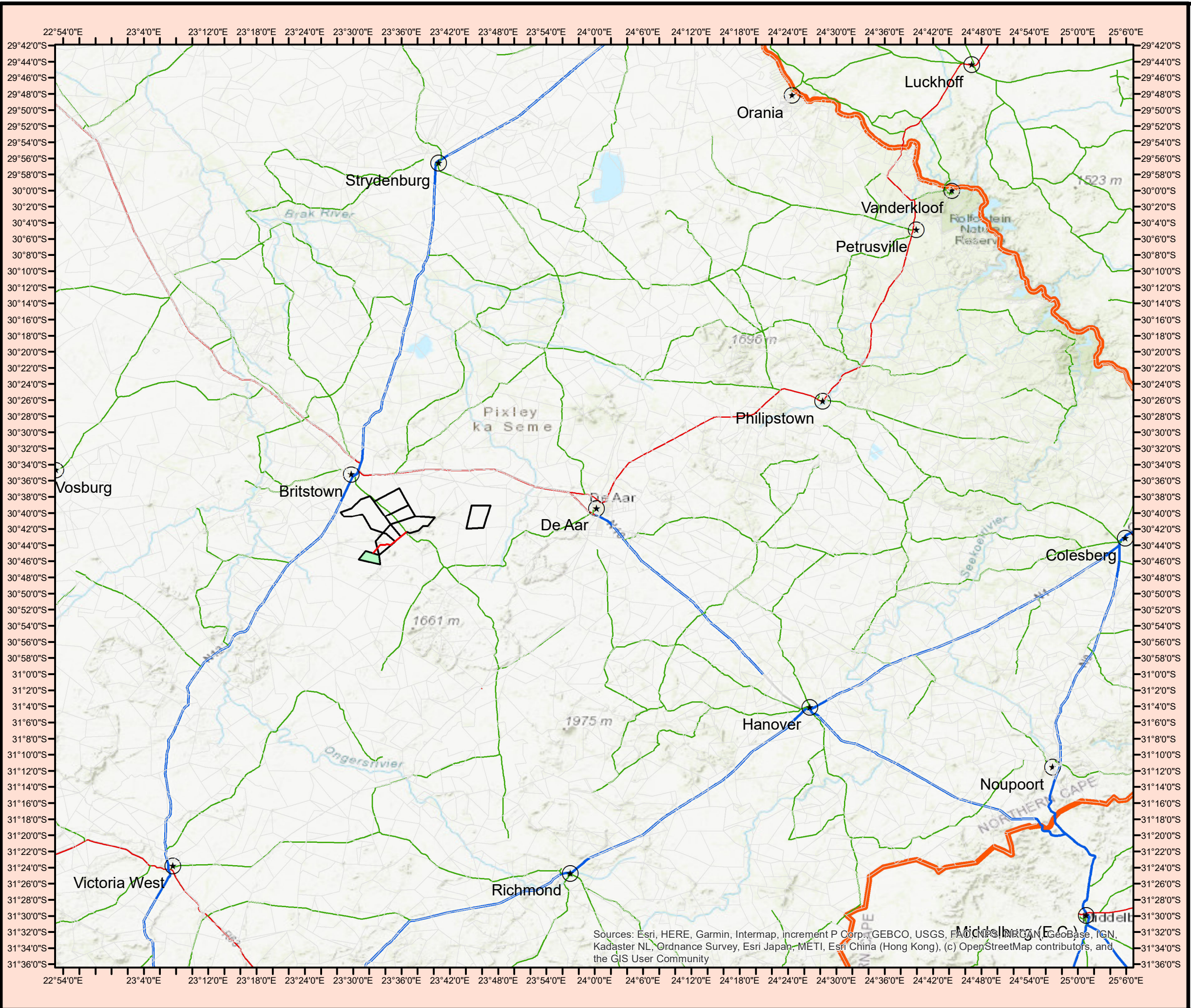
Site Assessment

Layout and Final Plans and Documents

Review of Site Plans

Site Design and Plans

Local Authority Permitting and Approvals



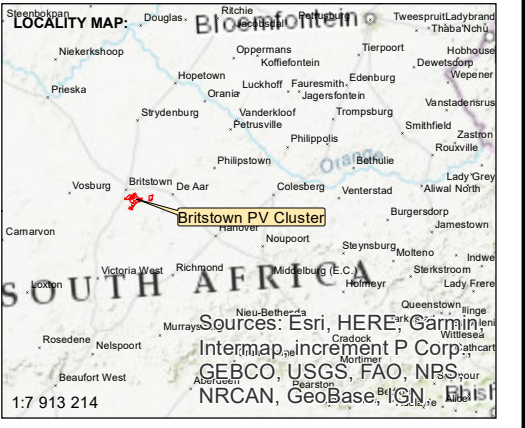
**EMTHANJENI LOCAL MUNICIPALITY
NORTHERN CAPE**

**BRITSTOWN PV CLUSTER
-
SOYUZ 1 PV
SOLAR PARK**

LOCALITY MAP

Legend

- SOYUZ 1 - Affected Farm Portion
- SOYUZ 1 Access Road
- Britstown PV Cluster
- ★ Central Places
- National Route
- Arterial Route
- Secondary Road
- Provincial Boundaries



SCALE :
0 5 10 20 30
Kilometers

1:847 755

DATE: FEBRUARY 2023

MAP REFERENCE/ VERSION NUMBER:

COORDINATE SYSTEM : Municipal WGS84 (Lo31)

PREPARED BY:

Warren Petterson Planning
1 Bridgeway, Business Centre
Century City, Cape Town
Matrix Building, 3rd Floor, Office 3H
7411

PO Box 152
Century City
7446

Tel : + 27 (0) 21 552 5255
Fax : + 27 (0) 86 537 9187
E-mail: andries@wppanning.co.za

Sources: Esri, HERE, Garmin, Intermap, Increment P Corp., GEBCO, USGS, FAO, CNRS, NRCAN, GeBase, IGN, Kadaster NL, Ordnance Survey, Esri Japan, METI, Esri China (Hong Kong), (c) OpenStreetMap contributors, and the GIS User Community