



theGILD <architects> PROJECT NO. tG_22.15

compiled - 19 Sep 2022

PROPOSED ADDS AND ALTS - ODETTE ANDERSON

NUMBER NINE CORNELIUS RD - SPARKS ESTATE - PTN TWO TEN OF ERF EIGHT EIGHTEEN - BRICKFIELD

tG_22 / 16 / design development presentation / page 3



sven hoffmann SACAP PR.ARCH 21491, SAIA, KZNIA
m: +27 73 744 2948 / e: sven@thegild.co.za /
58 padfield road, padfield park, pinetown, 3610

craig hohls SACAP PR.ARCH.T 24750450
m: +27 74 107 1447 / e: craig@thegild.co.za /
south coast office



theGILD <architects> PROJECT NO. tG_22.15

compiled - 19 Sep 2022

PROPOSED ADDS AND ALTS - ODETTE ANDERSON

NUMBER NINE CORNELIUS RD - SPARKS ESTATE - PTN TWO TEN OF ERF EIGHT EIGHTEEN - BRICKFIELD

tG_22 / 16 / design development presentation / page 4



sven hoffmann SACAP PR.ARCH 21491, SAIA, KZNIA
m: +27 73 744 2948 / e: sven@thegild.co.za /
58 padfield road, padfield park, pinetown, 3610

craig hohls SACAP PR.ARCH.T 24750450
m: +27 74 107 1447 / e: craig@thegild.co.za /
south coast office



theGILD <architects> PROJECT NO. tG_22.15

compiled - 19 Sep 2022

PROPOSED ADDS AND ALTS - ODETTE ANDERSON

NUMBER NINE CORNELIUS RD - SPARKS ESTATE - PTN TWO TEN OF ERF EIGHT EIGHTEEN - BRICKFIELD

tG_22 / 16 / design development presentation / page 5



sven hoffmann SACAP PR.ARCH 21491, SAIA, KZNIA
m: +27 73 744 2948 / e: sven@thegild.co.za /
58 padfield road, padfield park, pinetown, 3610

craig hohls SACAP PR.ARCH.T 24750450
m: +27 74 107 1447 / e: craig@thegild.co.za /
south coast office



theGILD <architects> PROJECT NO. tG_22.15

compiled - 19 Sep 2022

PROPOSED ADDS AND ALTS - ODETTE ANDERSON

NUMBER NINE CORNELIUS RD - SPARKS ESTATE - PTN TWO TEN OF ERF EIGHT EIGHTEEN - BRICKFIELD

tG_22 / 16 / design development presentation / page 6



sven hoffmann SACAP PR.ARCH 21491, SAIA, KZNIA
m: +27 73 744 2948 / e: sven@thegild.co.za /
58 padfield road, padfield park, pinetown, 3610

craig hohls SACAP PR.ARCH.T 24750450
m: +27 74 107 1447 / e: craig@thegild.co.za /
south coast office



theGILD <architects> PROJECT NO. tG_22.15

compiled - 19 Sep 2022

PROPOSED ADDS AND ALTS - ODETTE ANDERSON

NUMBER NINE CORNELIUS RD - SPARKS ESTATE - PTN TWO TEN OF ERF EIGHT EIGHTEEN - BRICKFIELD

tG_22 / 16 / design development presentation / page 7



sven hoffmann SACAP PR.ARCH 21491, SAIA, KZNIA
m: +27 73 744 2948 / e: sven@thegild.co.za /
58 padfield road, padfield park, pinetown, 3610

craig hohls SACAP PR.ARCH.T 24750450
m: +27 74 107 1447 / e: craig@thegild.co.za /
south coast office



theGILD <architects> PROJECT NO. tG_22.15

compiled - 19 Sep 2022

PROPOSED ADDS AND ALTS - ODETTE ANDERSON

NUMBER NINE CORNELIUS RD - SPARKS ESTATE - PTN TWO TEN OF ERF EIGHT EIGHTEEN - BRICKFIELD

tG_22 / 16 / design development presentation / page 8



sven hoffmann SACAP PR.ARCH 21491, SAIA, KZNIA
m: +27 73 744 2948 / e: sven@thegild.co.za /
58 padfield road, padfield park, pinetown, 3610

craig hohls SACAP PR.ARCH.T 24750450
m: +27 74 107 1447 / e: craig@thegild.co.za /
south coast office



theGILD <architects> PROJECT NO. tG_22.15

compiled - 19 Sep 2022

PROPOSED ADDS AND ALTS - ODETTE ANDERSON

NUMBER NINE CORNELIUS RD - SPARKS ESTATE - PTN TWO TEN OF ERF EIGHT EIGHTEEN - BRICKFIELD

tG_22 / 16 / design development presentation / page 9



sven hoffmann SACAP PR.ARCH 21491, SAIA, KZNIA
m: +27 73 744 2948 / e: sven@thegild.co.za /
58 padfield road, padfield park, pinetown, 3610

craig hohls SACAP PR.ARCH.T 24750450
m: +27 74 107 1447 / e: craig@thegild.co.za /
south coast office



theGILD <architects> PROJECT NO. tG_22.15

PROPOSED ADDS AND ALTS - ODETTE ANDERSON

NUMBER NINE CORNELIUS RD - SPARKS ESTATE - PTN TWO TEN OF ERF EIGHT EIGHTEEN - BRICKFIELD

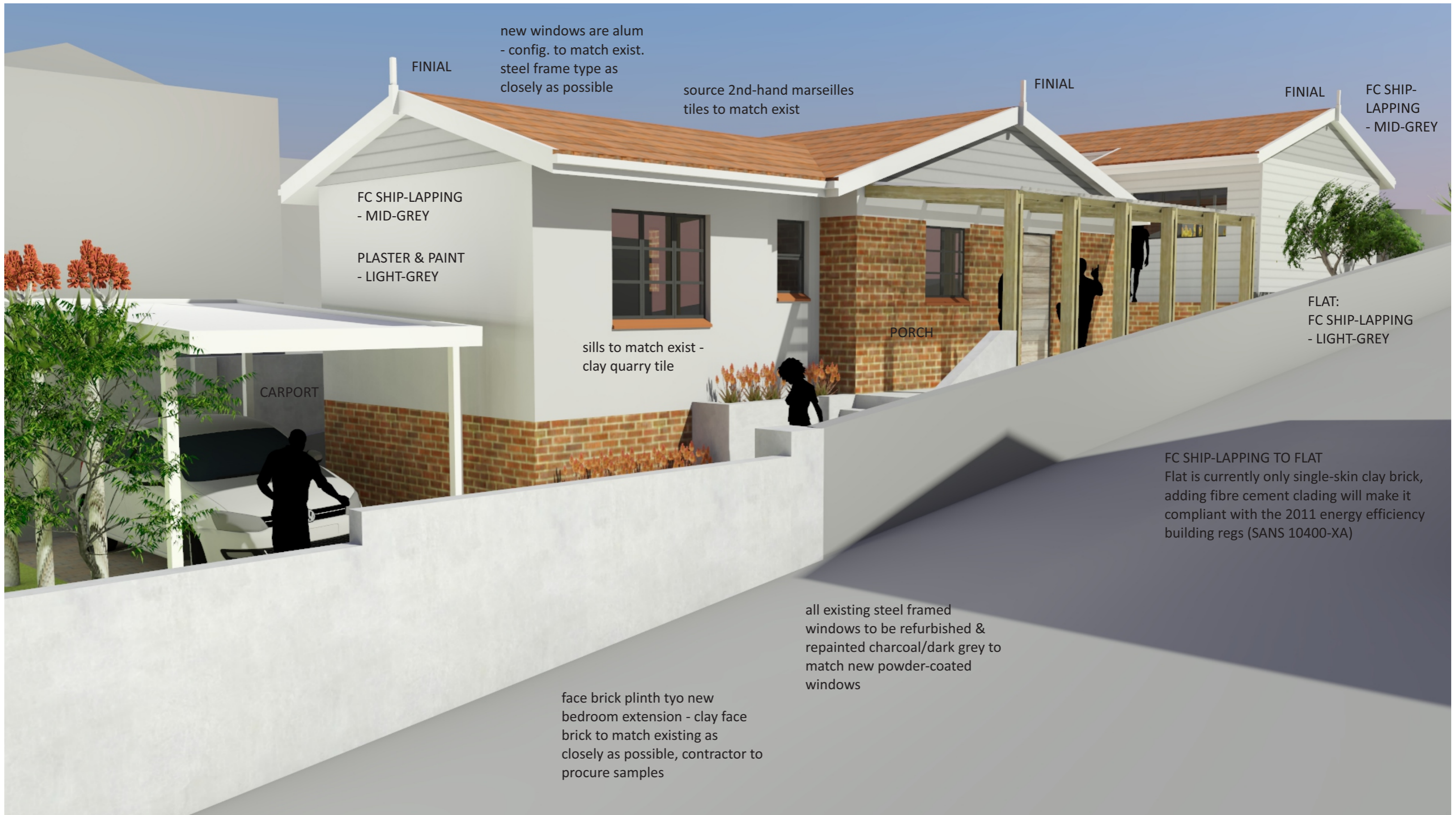
tG_22 / 16 / design development presentation / page 10

compiled - 19 Sep 2022



sven hoffmann SACAP PR.ARCH 21491, SAIA, KZNIA
m: +27 73 744 2948 / e: sven@thegild.co.za /
58 padfield road, padfield park, pinetown, 3610

craig hohls SACAP PR.ARCH.T 24750450
m: +27 74 107 1447 / e: craig@thegild.co.za /
south coast office



theGILD <architects> PROJECT NO. tG_22.15

compiled - 19 Sep 2022

PROPOSED ADDS AND ALTS - ODETTE ANDERSON

NUMBER NINE CORNELIUS RD - SPARKS ESTATE - PTN TWO TEN OF ERF EIGHT EIGHTEEN - BRICKFIELD

tG_22 / 16 / design development presentation / page 11



sven hoffmann SACAP PR.ARCH 21491, SAIA, KZNIA
m: +27 73 744 2948 / e: sven@thegild.co.za /
58 padfield road, padfield park, pinetown, 3610

craig hohls SACAP PR.ARCH.T 24750450
m: +27 74 107 1447 / e: craig@thegild.co.za /
south coast office