



Emvelo Quality and Environmental consultant (PTY) Ltd

38 Jacaranda Street, Arboretum, Richards Bay, 3900.

P.O. Box 101672, Meerensee, 3901

BACKGROUND INFORMATION DOCUMENT

THE PROPOSED EXPANSION OF AMANDLA POWER AGRICULTURE PIGGERY WITHIN JACHTDRIFT FARM, IN WARD 7 OF EDUMBE LOCAL MUNICIPALITY, KWAZULU-NATAL.

JULY 2021

Prepared by:

**Emvelo Quality and Environmental
Consultant (PTY) Ltd**

On Behalf of:

Amandla Power Agri (PTY) Ltd



INTRODUCTION

The Amandla Power Agri (PTY) Ltd proposes to expand the piggery farm situated within Jachtdrift farm (Mahloni Reserve), ERF no: 524, portion 0, Ward 7 of eDumbe Local Municipality, KwaZulu-Natal.

Therefore, an environmental impact assessment (EIA) has commenced, assisting the developer in identifying all potential adverse environmental consequences of the project, their extent, significance and to ensure that the environmental management requirements are adequately implemented.

The purpose of this Background Information Document (BID) is to provide you, as an Interested or Affected Party (I&AP), with a brief description of the EIA process to be undertaken and to obtain comments and contributions from I&AP's with regards to the potential impacts to the environment by the proposed project.

PROJECT DESCRIPTION

The Amandla Power Agri Piggery Farm propose to expand the piggery and build a sludge dam within Jachtdrift Farm in Paulpietersburg, KwaZulu-Natal.

The current piggery houses 17 sows and 53 growers. This makes the total of 70 pigs excluding weaners (piglets).

The farmer proposed to add 50 sows and 2 (two) boars to an existing stock. Given, the addition of 50 sows and 2 (two) boars, the Amandla Power Agri will be estimated to have 500 pigs or more with inclusion of growers. Therefore, the farm will exceed the threshold of 250 pigs.

Currently the farm has 3 (three) pigsties: 1 (one) currently in use is (39mX10m) in size; 2 (two) existing pigsties not in use are sized (25mX8m) and (26mX8m). Therefore, to complement this farming operation the farmer will add 8 (eight) more pigsty of (42Mx10) each in size. Also, build 90m3 sludge dam to temporary store the sludge from the pigsties.

Other existing farm infrastructure are: Farmworkers' house; Back-up Generator; Borehole and 2 (two) elevated jojo tanks, each with a capacity of 5250L.

PROJECT LOCATION

The site co-ordinates are as follows:

Lat/Long	Degrees	Minutes	Seconds
South	27°	34'	31.2"
East	30°	57'	04.8"

WHAT IS AN ENVIRONMENTAL IMPACT ASSESSMENT?

An EIA is an effective planning and decision-making tool, which allows for the identification of potential adverse environmental consequences of a proposed project, and its management through the planning process.

In terms of the National Environmental Management Act, 1998 (Act No.107 of 1998), as read with the Environmental Impact Assessment (EIA) Regulations of 2014 as amended in 2017, an Environmental Authorization must be obtained from the relevant decision-making authority, the Department of Economic Development, Tourism and Environmental Affairs (DEDTEA), prior to the commencement of any of the listed activities that may result in potential negative impacts on the environment. Thus, an environmental impact assessment is required. A Basic assessment that includes the public participation process will be performed.

ENVIRONMENTAL IMPACT ASSESSMENT PROCESS

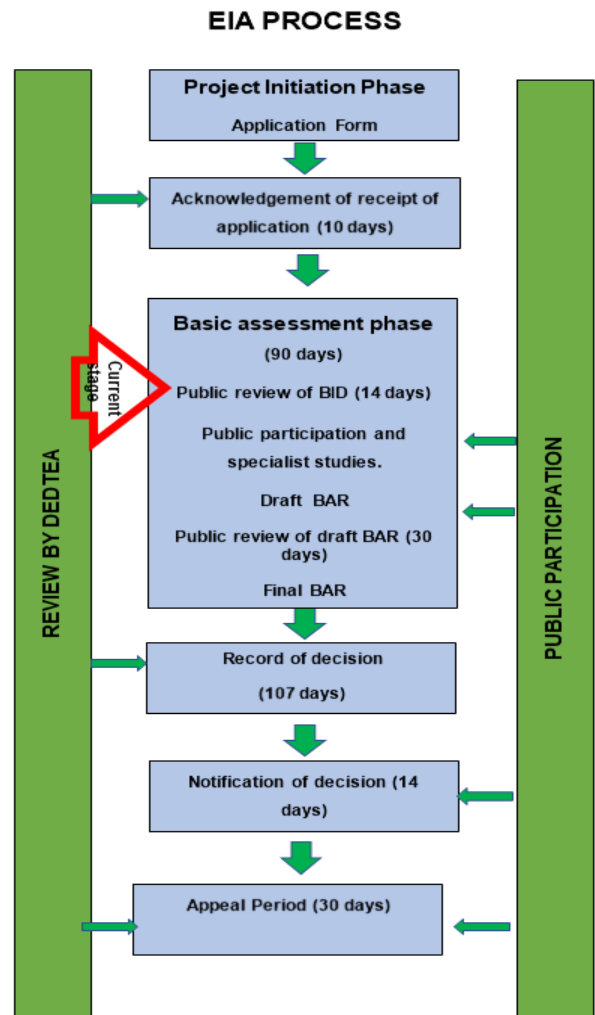


Figure 1: EIA process

In terms of the Environmental Impact Assessment (EIA) regulations, an independent Environmental Assessment Practitioner must be appointed to conduct the EIA. Therefore, Emvelo Consultant has been appointed to conduct the EIA. Emvelo will identify and assess the potential environmental impacts associated with the

proposed activity by conducting an objective and independent EIA in which all the relevant information and opinions of Interested and Affected Parties (IAPs) will be collected and passed on to the Department of Economic Development Tourism and Environmental Affairs (EDTEA). In this way, an informed decision-making process can take place.

LISTED ACTIVITIES TRIGGERED BY THIS PROJECT

The proposed project triggers the following listed activities of the Listing Notices;

Table 1: Listed Activities

LISTING NOTICE	ACTIVITY	DESCRIPTION OF ACTIVITY
1	39	The expansion and related operation of facilities for the concentration of animals [for the purpose of commercial production] in densities that will exceed— (ii) 8 square meters per small stock unit, where the expansion will constitute more than; (b) 250 additional pigs, excluding

LISTING NOTICE	ACTIVITY	DESCRIPTION OF ACTIVITY
		piglets that are not yet weaned;

WHAT IS PUBLIC PARTICIPATION?

Public participation is the process that promotes information sharing, consultation and active involvement amongst stakeholders and all interested and affected parties.

During the Public Participation Process, input from the proponent, technical experts, government authorities and the general public will be gathered to result in a better understanding of the project for all involved thus ensuring an informed decision-making throughout the process.

REGISTRATION OF INTERESTED AND AFFECTED PARTIES.

Any person, company, authority or other entity that might be directly or indirectly affected by the proposed activity is invited to register as an I&AP, in order to assist the EAP in identifying possible environmental, economic and social impacts of the proposed development and to make suggestions for mitigations. These comments will be

included as part of the Basic assessment report which will be submitted to the Department of Economic Development,

Tourism and Environmental Affairs (EDTEA) for consideration.

I&APs may forward their written comments along with their contact details within 14 days from receiving the document to; **Phumzile Lembede**.

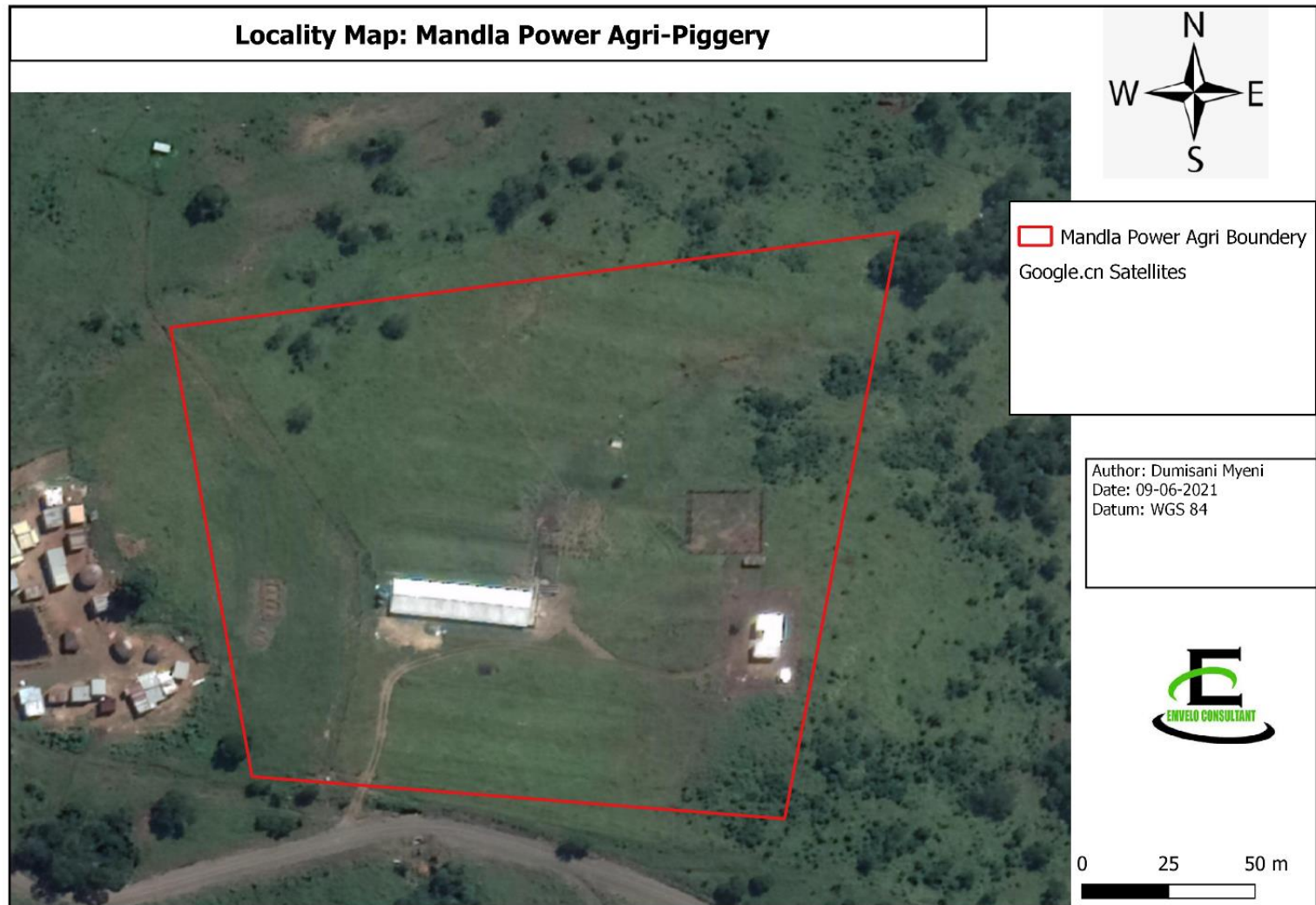
Postal address: P. O. Box 101672, Meerensee,3901;

Tel: 035 789 0632;

Fax: 086 577 5220,

Email: info@emveloconsultants.co.za.

APPENDIX A: (LOCALITY MAP)





Emvelo Quality and Environmental Consultant (PTY) Ltd
38 Jacaranda Street, Arboretum , Richards Bay, 3900.

P.O. Box 101672, Meerensee, 3901

Info@emveloconsultants.co.za

REGISTRATION AND COMMENT FORM

THE PROPOSED EXPANSION OF AMANDLA POWER AGRICULTURE PIGGERY WITHIN JACHTDRIFT FARM, IN WARD 7 OF EDUMBE LOCAL MUNICIPALITY, KWAZULU-NATAL.

I wish to register as an interested and affected party and / or bring to the attention of Emvelo Consultant the following information.

<u>Personal Information</u>	
Name and Surname	
Company /organization	
Physical Address	
Postal address	
<u>Telephone:</u>	<u>Cell:</u>
Email:	
Due to Covid-19 Pandemic, we would like you to inform us on a preferred and effective means of receiving documents and communication from us. <u>Method:</u> <u>Address:</u>	
<u>Comments</u>	

Signature

Date