

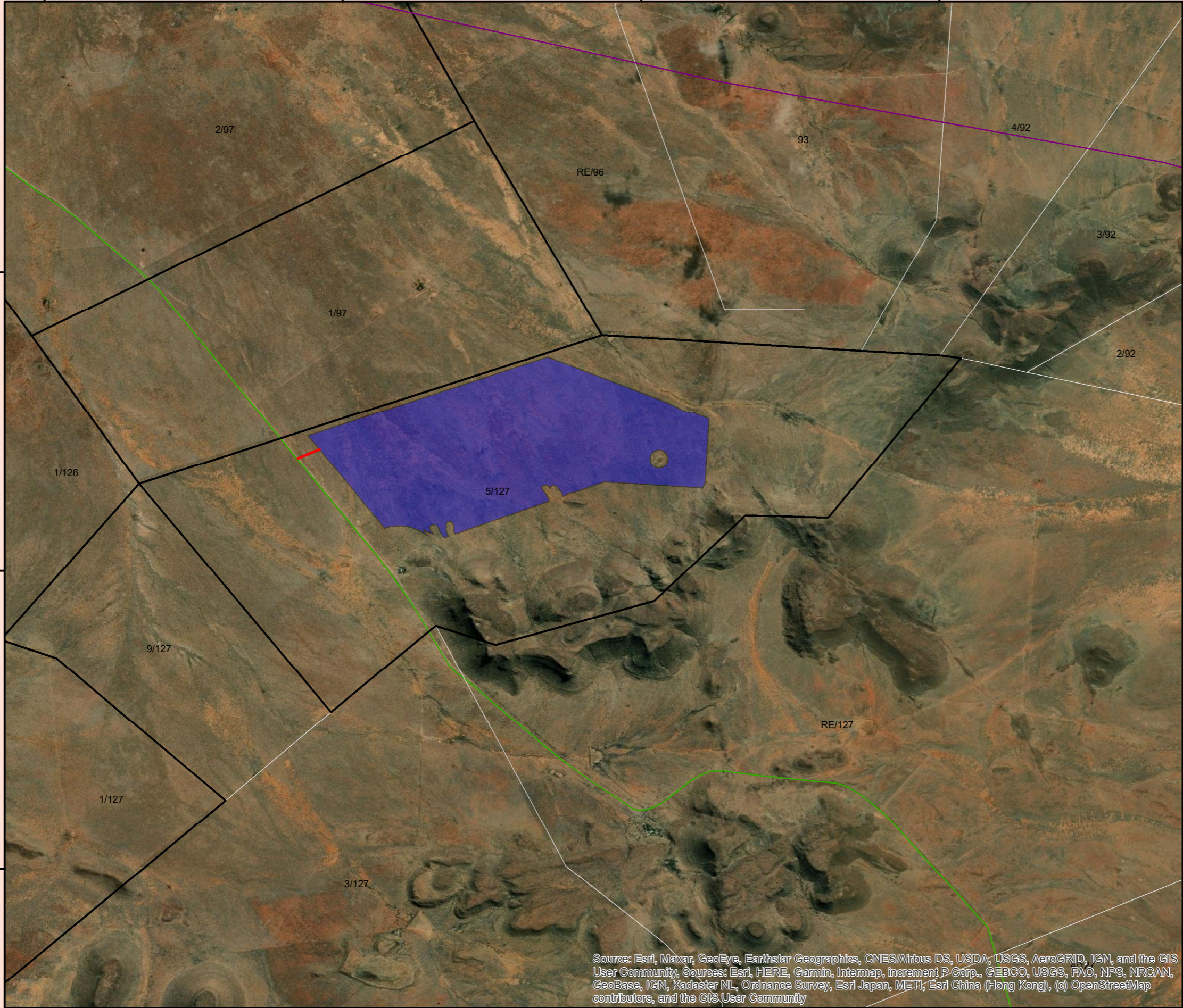
23°34'0"E 23°36'0"E 23°38'0"E 23°40'0"E

30°40'0"S 30°40'0"S

30°42'0"S 30°42'0"S

30°44'0"S 30°44'0"S

23°34'0"E 23°36'0"E 23°38'0"E 23°40'0"E



EMTHANJENI LOCAL MUNICIPALITY NORTHERN CAPE

BRITSTOWN PV CLUSTER - SOYUZ 4 PV SOLAR PARK

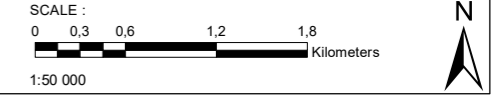
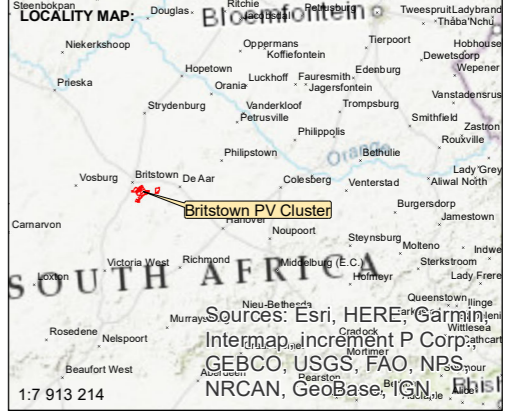
CADASTRAL MAP - AERIAL

Legend

- Electrical servitude line
- SOYUZ 4 proposed access road
- SOYUZ 4 proposed development area
- Britstown PV Cluster

Central Places

- National Route
- Arterial Route
- Secondary Road



DATE: MARCH 2023

MAP REFERENCE/ VERSION NUMBER:

COORDINATE SYSTEM : Municipal WGS84 (Lo31)

PREPARED BY:

Warren Petterson Planning
1 Bridgeway, Business Centre
Century City, Cape Town
Matrix Building, 3rd Floor, Office 3H
7411

PO Box 152
Century City
7446

Tel : + 27 (0) 21 552 5255
Fax : + 27 (0) 86 537 9187
E-mail: andries@wpplanning.co.za

Site Identification and Selection Site Assessment Levelling and Topographic Documents Technical Site Plans Site Design and Plans Local Authority Permitting and Approvals

Source: Esri, Maxar, GeoEye, Earthstar Geographics, CNES/Airbus DS, USDA, USGS, AeroGRID, IGN, and the GIS User Community, Sources: Esri, HERE, Garmin, Intermap, increment P Corp., GEBCO, USGS, FAO, NPS, NRCAN, GeoBase, IGN, Kadaster NL, Ordnance Survey, Esri Japan, METI, Esri China (Hong Kong), (c) OpenStreetMap contributors, and the GIS User Community