



38 Jacaranda Street, Arboretum, Richards Bay  
P.O. Box 101672, Meerensee, 3901  
Telephone: 035 789 0632 / 078 284 9332 Fax: 086 535 8846  
Website: [www.emveloconsultants.co.za](http://www.emveloconsultants.co.za) E-mail: [info@emveloconsultants.co.za](mailto:info@emveloconsultants.co.za)

*Integrity | Honesty | Excellence*



## BACKGROUND INFORMATION DOCUMENT

**THE PROPOSED DEVELOPMENT OF THE  
SIZANANI MAZULU PIGGERY MULTIPURPOSE  
AT THE ZAMOKUHLE AREA OF WARD 20 IN  
MTUNZINI, WITHIN THE JURISDICTION OF THE  
UMLALAZI LOCAL MUNICIPALITY, KING  
CETSHWAYO DISTRICT.**

**JULY 2021**

**Prepared by:**

**Emvelo Quality and Environmental  
Consultant (PTY) Ltd**

**Prepared for**

**SIZANANI MAZULU MULTIPURPOSE**



## 1. INTRODUCTION.

The Sizanani Mazulu Piggery Multipurpose farm proposes to develop a piggery at the Zamokuhle Area of Ward 20 in Mtunzini, within the jurisdiction of the uMlalazi Local Municipality, King Cetshwayo District, KwaZulu-Natal.

Therefore, an environmental impact assessment (EIA) has commenced, assisting the developer in identifying all potential adverse environmental consequences of the project, their extent, significance and to ensure that the environmental management requirements are adequately implemented.

The purpose of this Background Information Document (BID) is to provide you, as an Interested or Affected Party (I&AP), with a brief description of the EIA process to be undertaken and to obtain comments and contributions from I&APs with regards to the potential impacts to the environment by the proposed project.

## 2. PROJECT DESCRIPTION

The Sizanani Mazulu Piggery Multipurpose farm proposes to develop a piggery facility at the Zamokuhle Area of Ward 20, within the jurisdiction of the uMlalazi Local Municipality, King Cetshwayo District, KwaZulu-Natal.

The proposed project entails the development of 8 pigsties, six which will be 40x8m, and two will be 25x8m, where 80 sow units will be raised. The farmer expects to have more than 300 pigs in total as part of this development.

The proposed development also includes the development of a 90m<sup>3</sup> slurry sump for the collection of effluent waste. The farmer also proposes to install a borehole for the abstraction of water, to be used on the farm.

The total development footprint is 2320sqm.

## 3. PROJECT LOCATION

The site co-ordinates are as follows:

Lat/Long	Degrees	Minutes	Seconds
<b>South</b>	28°	56'	16.81"
<b>East</b>	31°	40'	16.24"

## 4. WHAT IS AN ENVIRONMENTAL IMPACT ASSESSMENT?

An EIA is an effective planning and decision-making tool, which allows for the identification of potential adverse environmental consequences of a proposed project, and its management through the planning process.

In terms of the National Environmental Management Act, 1998 (Act No.107 of

1998), as read with the Environmental Impact Assessment (EIA) Regulations of 2014 as amended in 2017, an Environmental Authorization must be obtained from the relevant decision-making authority, the Department of Economic Development, Tourism and Environmental Affairs (DEDTEA), prior to the commencement of any of the listed activities that may result in potential negative impacts on the environment. Thus, an environmental impact assessment is required. A Basic assessment that includes the public participation process will be performed.

In terms of the Environmental Impact Assessment (EIA) regulations, an independent Environmental Assessment Practitioner must be appointed to conduct the EIA. Therefore, Emvelo Consultant has been appointed to conduct the EIA. Emvelo will identify and assess the potential environmental impacts associated with the proposed activity by conducting an objective and independent EIA in which all the relevant information and opinions of Interested and Affected Parties (IAPs) will be collected and passed on to the Department of Economic Development Tourism and Environmental Affairs (EDTEA). In this way, an informed decision-making process can take place.

## 5. ENVIRONMENTAL IMPACT ASSESSMENT PROCESS

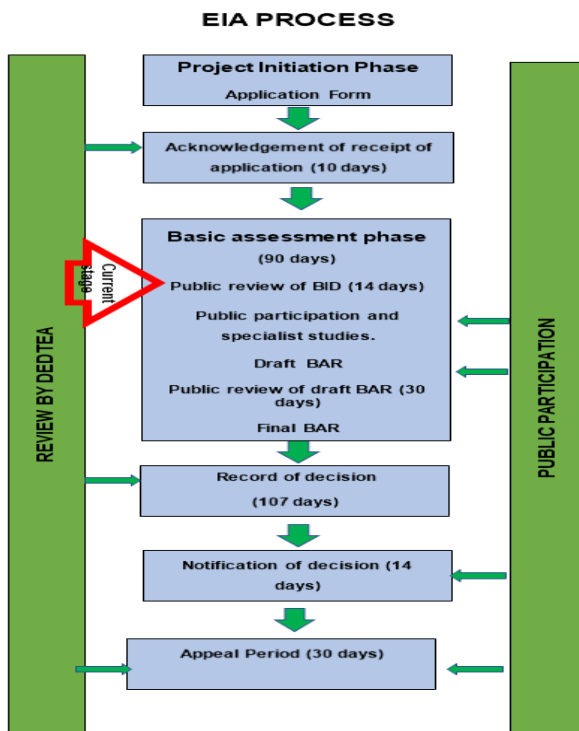


Figure 1: EIA process

## 6. LISTED ACTIVITIES TRIGGERED BY THIS PROJECT

The proposed project triggers the following listed activities of the Listing Notices;

Table 1: Listed Activities

LISTING NOTICE	ACTIVITY	DESCRIPTION OF ACTIVITY
1	4	The development and related operation of facilities or infrastructure for the concentration of animals [for the purpose of commercial production] in

LISTING NOTICE	ACTIVITY	DESCRIPTION OF ACTIVITY
		densities that exceed - (ii) 8 square meters per small stock unit and; b. more than 250 pigs per facility excluding piglets that are not yet weaned;

## 7. WHAT IS PUBLIC PARTICIPATION?

Public participation is the process that promotes information sharing, consultation, active involvement amongst stakeholders and all interested and affected parties.

During the Public Participation Process, input from the proponent, technical experts, government authorities and the public will be gathered to result in a better understanding

I&APs may forward their written comments along with their contact details within 14 days from receiving the document to; **Phumzile Lembede**.

**Postal address:** P. O. Box 101672, Meerensee,3901;

**Tel:** 035 789 0632;

**Fax:** 086 577 5220,

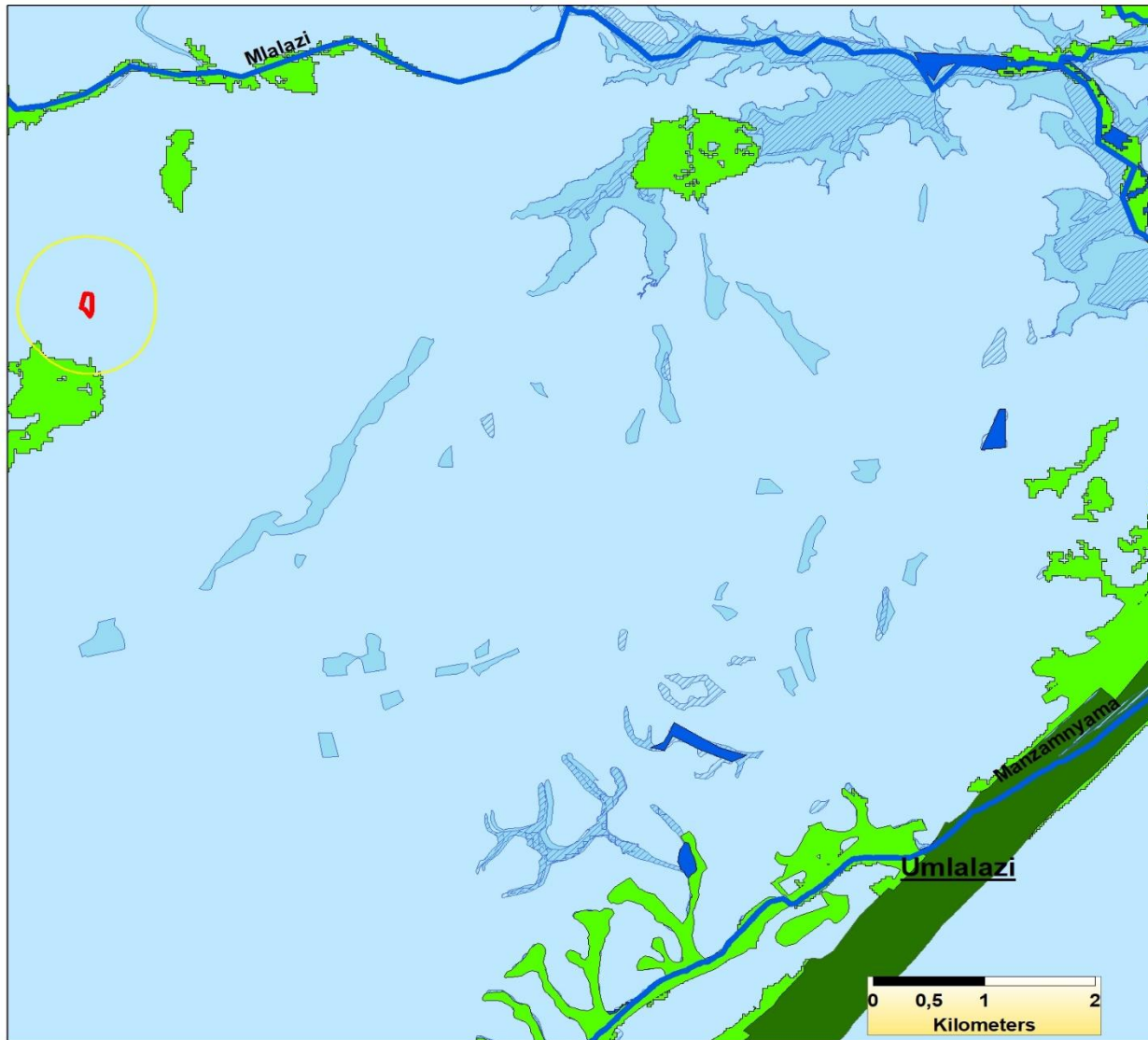
**Email:** [info@emveloconsultants.co.za](mailto:info@emveloconsultants.co.za).

of the project for all involved thus ensuring an informed decision-making throughout the process.

## 8. REGISTRATION OF INTERESTED AND AFFECTED PARTIES.

Any person, company, authority or other entity that might be directly or indirectly affected by the proposed activity is invited to register as an I&AP, in order to assist the EAP in identifying possible environmental, economic and social impacts of the proposed development and to make suggestions for mitigations. These comments will be included as part of the Basic assessment report which will be submitted to the Department of Economic Development, Tourism and Environmental Affairs (EDTEA) for consideration.

APPENDIX A  
(LOCALITY MAP)

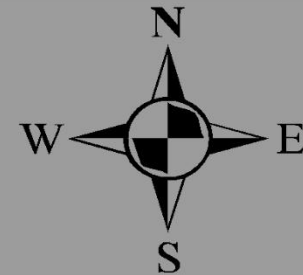


SIZANANI MAZULU PIGGERY

Locality Map

Legend

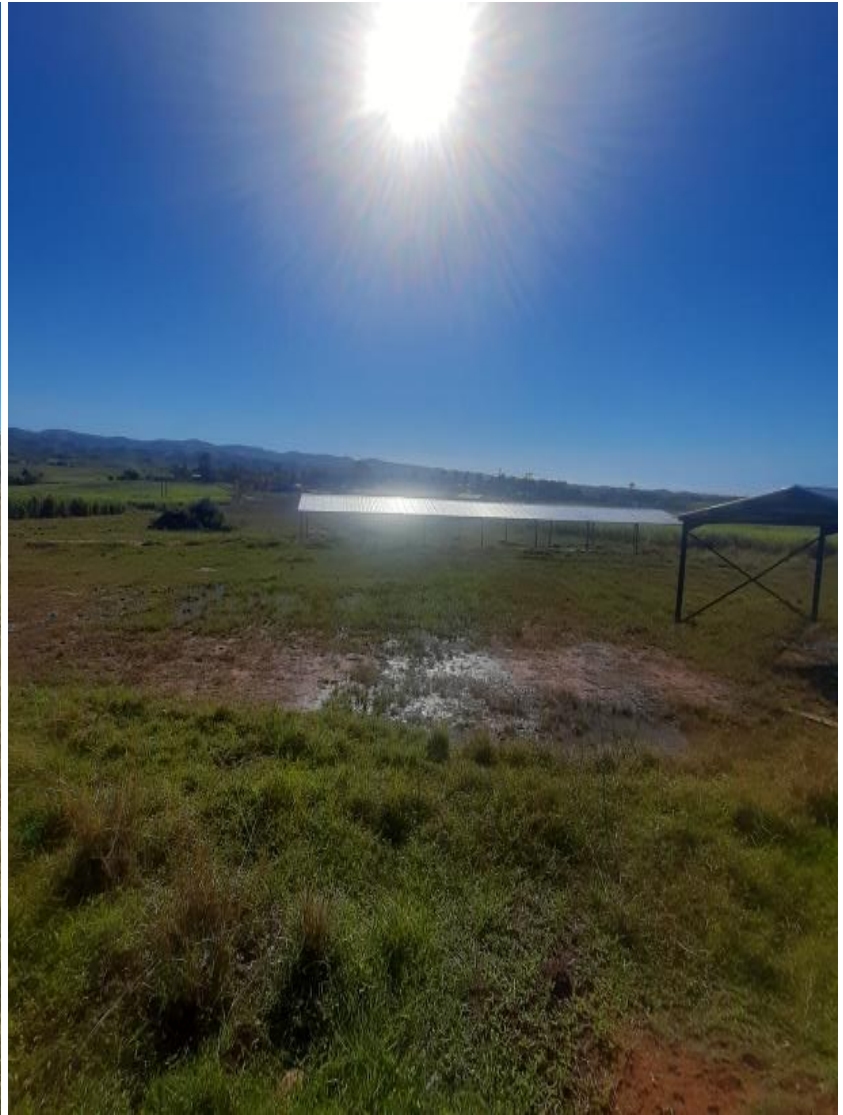
- Proposed Site
- Site 500m Buffer
- KZN CBA Optimal
- KZN CBA Irreplaceable
- NFEPA Wetlands
- Protected Areas
- National Wetlands



18 June 2021  
Sizwe Selby Mabuza  
\*\*\*\*Emvelo Consultants\*\*\*\*



**APPENDIX B  
(SITE IMAGES)**





38 Jacaranda Street, Arboretum, Richards Bay  
 P.O. Box 101672, Meerensee, 3901  
 Telephone: 035 789 0632 / 078 284 9332 Fax: 086 535 8846  
 Website: www.emveloconsultants.co.za E-mail: info@emveloconsultants.co.za

*Integrity | Honesty | Excellence*



REGISTRATION AND COMMENT FORM

**THE PROPOSED DEVELOPMENT OF THE SIZANANI MAZULU PIGGERY MULTIPURPOSE  
 AT THE ZAMOKUHLE AREA OF WARD 20 IN MTUNZINI, WITHIN THE JURISDICTION OF  
 THE UMLALAZI LOCAL MUNICIPALITY, KING CETSHWAYO DISTRICT.**

I wish to register as an interested and affected party and / or bring to the attention of Emvelo Consultant the following information.

<u>Personal Information</u>	
Name and Surname	
Company /organization	
Physical Address	
Postal address	
<u>Telephone:</u>	<u>Cell:</u>
Email:	
Due to Covid-19 Pandemic, we would like you to inform us on a preferred and effective means of receiving documents and communication from us.	
<b><u>Method:</u></b>	<b><u>Address:</u></b>
<u>Comments</u>	

\_\_\_\_\_  
Signature

\_\_\_\_\_  
Date