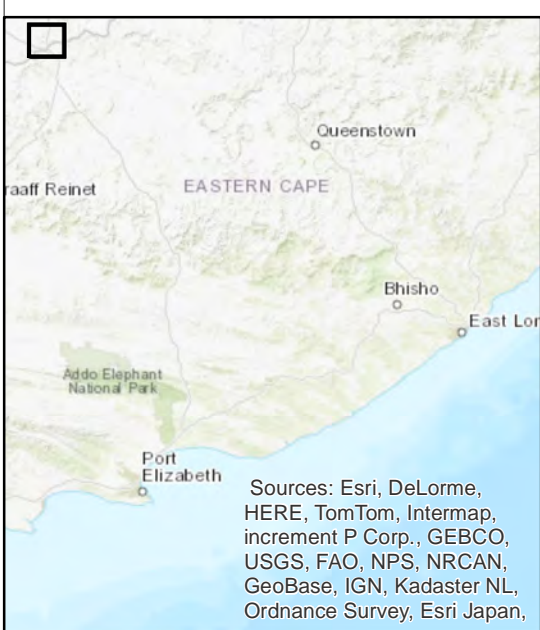


- Phezukomoya Site Boundary
 - Final Mitigated Turbine Position
- Landtype
- Da14 (Duplex soils, mostly red)
 - Da77 (Duplex soils, mostly red)
 - Fb174 (Shallow soils, occasionally calcareous)
 - Fb373 (Shallow soils, occasionally calcareous)
 - Ib316 (Shallow soils with much rock)



1:77,049 Scale @ A3

0 1.5 3 km

Produced: AA
Reviewed: SC
Approved: AB

Ref: 2245/REP/063
Date: 25/01/2018

Land Types
Figure 8.2

Phezukomoya Wind Energy Facility
Environmental Impact
Assessment Report

Basemapping from the Chief Directorate: National Geo-Spatial Information of South Africa