



Emvelo Quality and Environmental consultant (PTY) Ltd
38 Jacaranda Street, Arboretum, Richards Bay, 3900.
P.O. Box 101672, Meerensee, 3901
Tel: 035 789 0632 1 8760, Cell: (078) 2849 332 Fax: 086 577 5220,

BACKGROUND INFORMATION DOCUMENT

**THE PROPOSED DEVELOPMENT OF CFCI ESIKHAWINI
CHURCH AUDITORIUM AT EXTENTION J, ERF 1976 WITHIN
19 OF THE UMHLATHUZE LOCAL MUNICIPALITY, KZN.**

FEBRUARY 2022

PREPARED BY:

**Emvelo Quality and Environmental Consultant
(PTY) Ltd**

PREPARED FOR:

TJ Architects International (Pty) Ltd



ON BEHALF OF:

Covenant Fellowship Church International



INTRODUCTION

Emvelo Quality and Environmental Consultant has been appointed by TJ Architects International (Pty) Ltd, on behalf of Covenant Fellowship Church International for a proposed development of an auditorium for church services at Esikhawini, Extension J, ERF1976, Ward 19 of UMhlatuze Local Municipality.

Consequently, an environmental impact assessment (EIA) has commenced, assisting the TJ Architects International (Pty) Ltd in identifying all potential adverse environmental consequences of the project, their extent, significance and to ensure that the environmental management requirements are adequately implemented.

The purpose of this Background Information Document (BID) is to provide you, as an Interested or Affected Party (I&AP), with a brief description of the EIA process to be undertaken and to obtain comments and contributions from I&APs with regards to the potential impacts to the environment by the proposed project.

PROJECT DESCRIPTION

The proposed development will comprise of the following components:

- ✚ The construction of 2540.96m² main church structure (two storey building);
- ✚ Construction of 211.38m² spill out area;
- ✚ Construction of 77.31 m² guard house;
- ✚ Construction of 4931.55m² paved parking lots
- ✚ Construction of stormwater systems (to be determined *in-situ*).

Total development footprint including paved parking lots will be 8 077.57m². The site area allocation is approximately 9000m².

PROJECT LOCATION

The site co-ordinates are as follows:

CFCI ESIKHAWINI CHURCH AUDITORIUM	
Co-ordinates	28°53'13.5"S 31°53'41.9"E

WHAT IS AN ENVIRONMENTAL IMPACT ASSESSMENT?

An EIA is an effective planning and decision-making tool, which allows for the identification of potential adverse environmental consequences of a proposed project, and its management through the planning process.

In terms of the National Environmental Management Act, 1998 (Act No.107 of 1998), as read with the Environmental Impact Assessment (EIA) Regulations of 2014 as amended in 2017, an Environmental Authorization must be obtained from the relevant decision-making authority, the Department Economic Development, Tourism and Environmental Affairs (DEDTEA) prior to the commencement of any of the listed activities that may result in potential negative impacts on the environment. Thus, an environmental impact assessment is required. A Basic assessment that includes the public participation process will be performed.

ENVIRONMENTAL IMPACT ASSESSMENT PROCESS

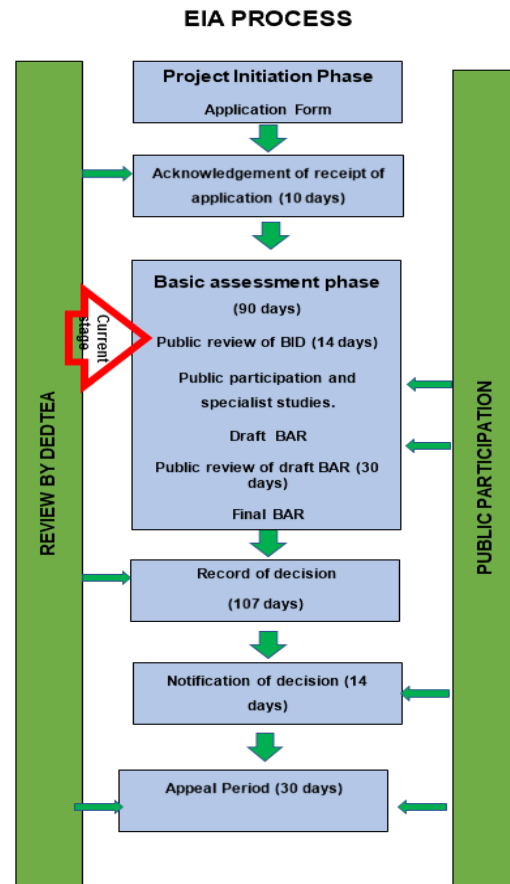


Figure 1: EIA process

In terms of the Environmental Impact Assessment (EIA) regulations, an independent Environmental Assessment Practitioner must be appointed to conduct the EIA. Therefore, Emvelo Consultant has been appointed by TJ Architects International (Pty) Ltd, on behalf of Covenant Fellowship Church International to conduct the EIA.

Emvelo Consultant (EAP) will identify and assess the potential environmental impacts associated with the proposed activity by conducting an objective and independent EIA in which all the relevant information and opinions of Interested and Affected Parties (IAPs) will be collected and passed on to the Department of Economic Development, Tourism and Environmental Affairs (EDTEA) In this way, an informed decision-making process can take place.

LISTED ACTIVITIES TRIGGERED BY THIS PROJECT

The proposed project triggers the following listed activities of the Listing Notices;

Table 1: Listed Activities

LISTING NOTICE	ACTIVITY	DESCRIPTION OF ACTIVITY
1	12	The development of— (ii) infrastructure or structures with a physical footprint of 100 square metres or more; where such development occurs— a) within a watercourse; (b) in front of a development setback; or (c) if no development setback exists, within

LISTING NOTICE	ACTIVITY	DESCRIPTION OF ACTIVITY
		32 metres of a watercourse, measured from the edge of a watercourse; Applicability: The CFCI has a total development footprint of 8 077.57m ² , with its two corners of the site northern boundary intercept with wetlands (NFEPAs) and SAIIE wetlands.

The NEMA, and the Environmental Impact Assessment (EIA) Regulations (2014) as amended in 2017, govern the process of applying for environmental authorization for certain developments. A provision in the EIA Regulations is made for two forms of assessment: Basic Assessment and Scoping & EIA, depending on the scope of the activity. The EIA regulations specify that: Activities identified in Listing Notice 1 and 3 (GNR 327 and 324 of 2017) requires a Basic Assessment while activities identified in Listing Notice 2 (GNR 325 of 2017) are subject to a Scoping and EIA.

The listed activity associated with the proposed development is: Listing Notice 1,

Activity 12. Therefore, this application will follow a **Basic Assessment Process**, as a result mentioned Listing Notice 1 trigger.

WHAT IS PUBLIC PARTICIPATION?

Public participation is the process that promotes information sharing, consultation, and active involvement amongst stakeholders, and all interested and affected parties.

During the Public Participation Process, input from the proponent, technical experts, government authorities and the general public will be gathered to result in a better understanding of the project for all involved thus ensuring an informed decision-making throughout the process.

I&APs may forward their written comments along with their contact details within 14 days from receiving the document to; **Phumzile Lembede**.

Postal address: P. O. Box 101672, Meerensee,3901;

Tel: 035 789 0632;

Fax: 086 577 5220,

Email: info@emveloconsultants.co.za

REGISTRATION OF INTERESTED AND AFFECTED PARTIES.

Any person, company, authority or other entity that might be directly or indirectly affected by the proposed activity is invited to register as an I&AP, in order to assist the EAP in identifying possible environmental, economic and social impacts of the proposed development and to make suggestions for mitigations. These comments will be included as part of the Basic assessment report which will be submitted to the Department of Economic Development, Tourism and Environmental Affairs for consideration.

APPENDIX A: (LOCALITY MAP)

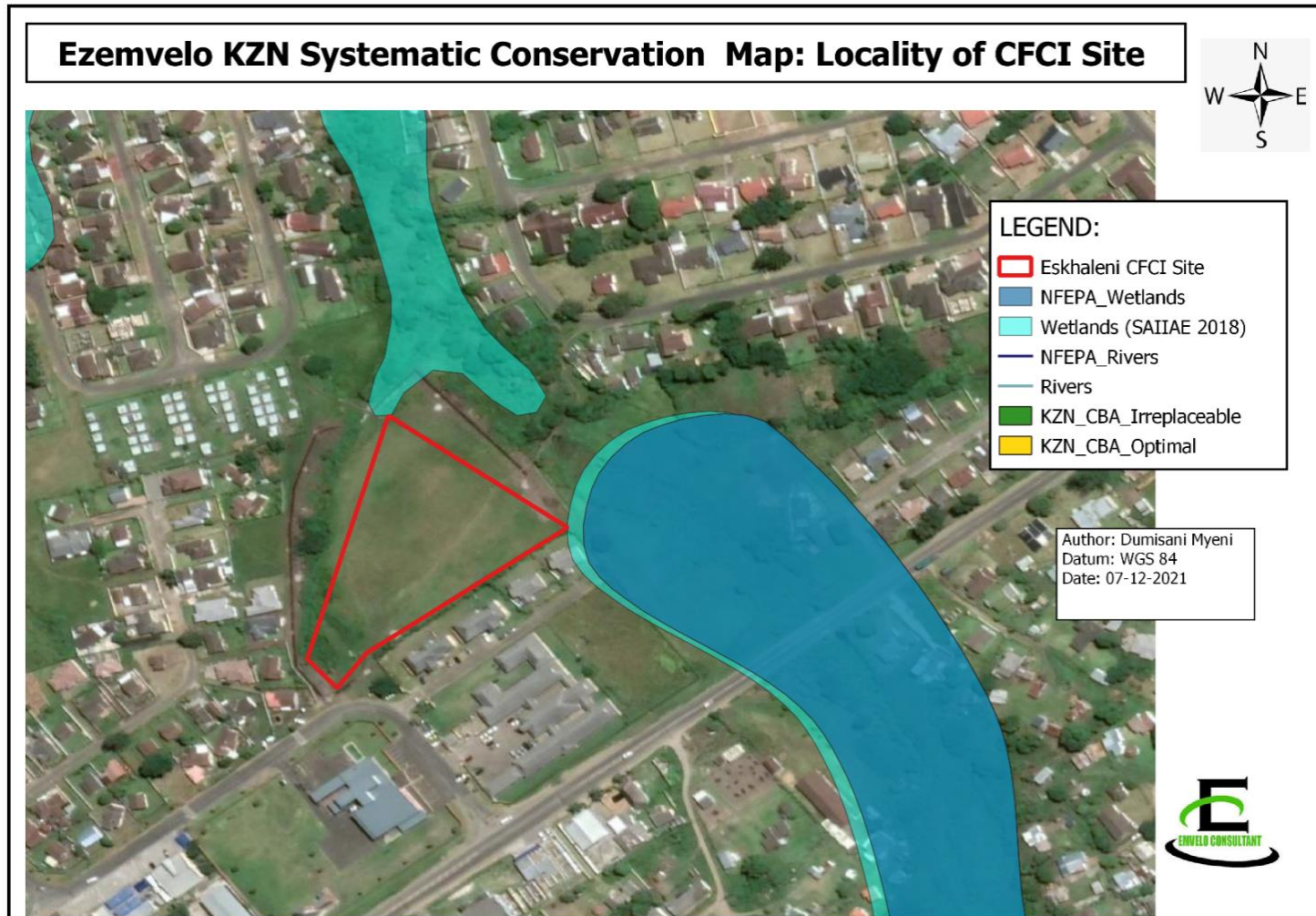


Figure 2: Map Showing Locality of CFCI auditorium for church services

Emvelo Quality and Environmental Consultant (PTY) Ltd
38 Jacaranda Street, Arboretum, Richards Bay, 3900.

P.O. Box 101672, Meerensee, 3901

Info@emveloconsultants.co.za

REGISTRATION AND COMMENT FORM

**THE PROPOSED DEVELOPMENT OF CFCI ESIKHAWINI CHURCH AUDITORIUM AT
EXTENTION J, ERF 1976 WITHIN WARD 19 OF THE UMHLATHUZE LOCAL
MUNICIPALITY, KWAZULU NATAL.**

I wish to register as an interested and affected party and / or bring to the attention of Emvelo
Consultant the following information.

<u>Personal Information</u>	
Name and Surname	
Company /organization	
Physical Address	
Postal address	
Telephone:	Cell:
Email:	
Due to Covid-19 Pandemic, we would like you to inform us on a preferred and effective means of receiving documents and communication from us.	
<u>Method:</u>	<u>Address:</u>
<u>Comments</u>	

Signature

Date