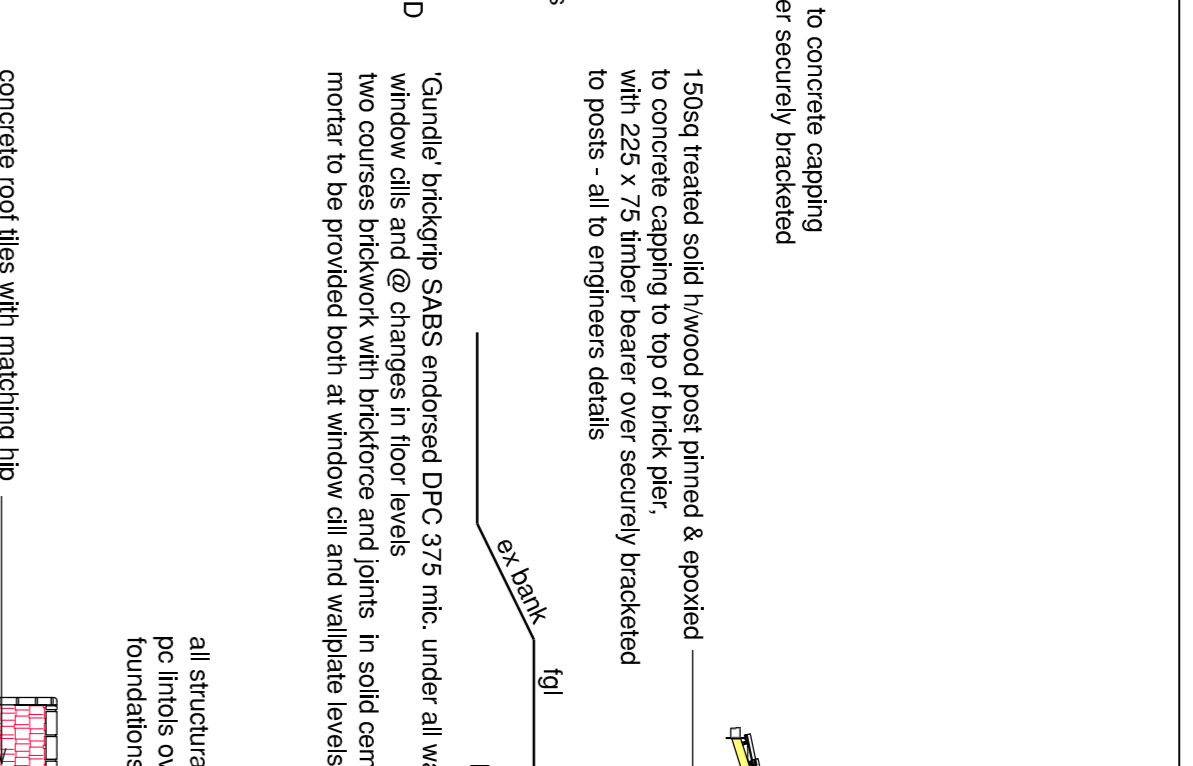
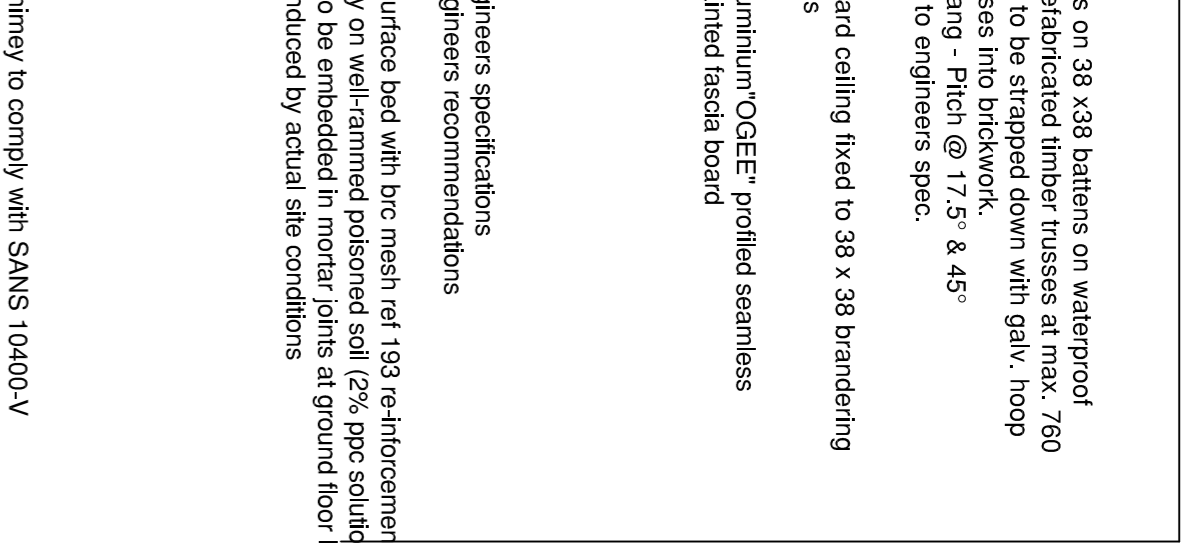


concrete roof tiles with matching hip & verge tiles  
 painted fibre-cement shinglep boards  
 powder coated aluminium "QCEE" profiled seamless gutters fixed to painted fascia board  
 rc eyebrow feature beam/slab to engineers details  
 100sqg painted gms posts with rc beam/eyebrow slab over - all to engineers details  
 concrete roof tiles with matching hip & verge tiles  
 painted fibre-cement shinglep boards  
 150sqg treated solid h/wood post primed & epoxied to concrete capping to top of brick pier, with 225 x 75 timber bearer over securely bracketed to posts - all to engineers details  
 smooth plaster & paint  
 powder coated aluminium windows & doors by specialist glazing to comply with SANS 10400-N  
 rc eyebrow feature beam/slab to engineers details  
 natural stone cladding to owners choice  
 1m high balustrade to comply with SANS 10400 - D  
 150sqg gms post bracketed to brick piers with conc. capping, supporting rc slab over - all to engineers details



concrete roof tiles with matching hip & verge tiles  
 re-inforced concrete slab roof & beams to engineer's detail and specification - waterproofed, screeded and laid to falls to tubore outlets by specialist.  
 150sqg treated solid h/wood post with timber bearer - all to engineers details  
 smooth plaster & paint  
 150sqg treated solid h/wood post with timber bearer - all to engineers details  
 powder coated aluminium windows by specialist glazing to comply with SANS 10400-N  
 natural stone cladding to owners choice  
 150sqg gms post bracketed to brick piers with conc. capping, supporting rc slab over - all to engineers details

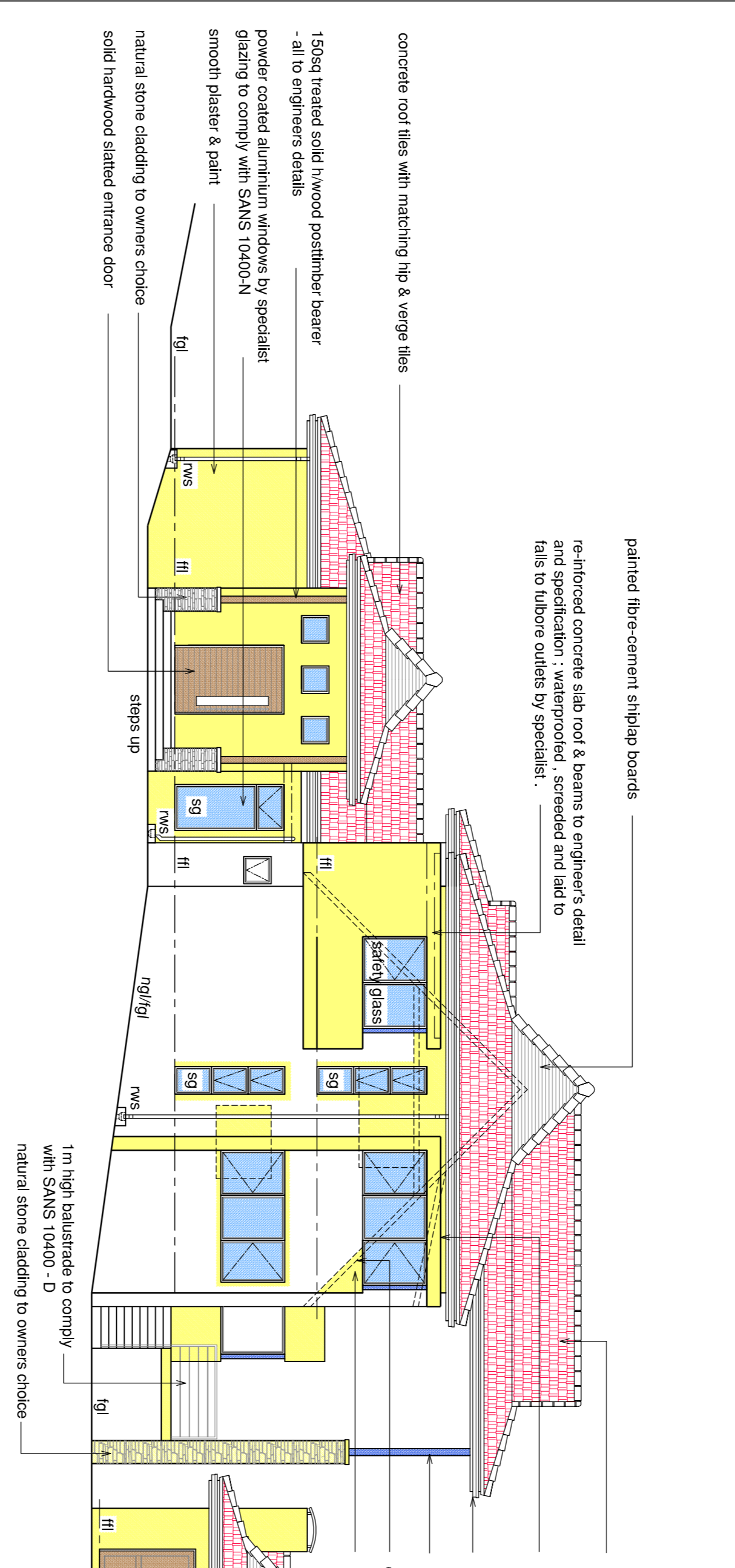


concrete roof tiles on 38 x38 battens on waterproof membrane on prefabricated timber trusses at max. 750 centres. Trusses to be striped down with galv. hoop 500 series 2 beams @ Pitch @ 17.5° & 45° roof truss design to engineers spec.  
 skinned rhinoboard ceiling fixed to 38 x 38 brackering to us of the beams  
 powder coated aluminium "QCEE" profiled seamless gutters fixed to painted fascia board  
 rc counter top  
 foundations to engineers recommendations as per geotech engineers recommendations  
 100mm concrete surface bed with b/c mesh r/c 193 re-inforcement on use green underlay on well-rammed poisoned soil (2% ppc solution) as well as ant guard to be embedded in mortar joints at ground floor level unless otherwise induced by actual site conditions  
 all structural work, rc slabs, columns, foundations, pc joints over openings & walls to engineer's design & details  
 foundations & slabs on fill to engineers details  
 SCALE 1:100  
 SECTION F-F

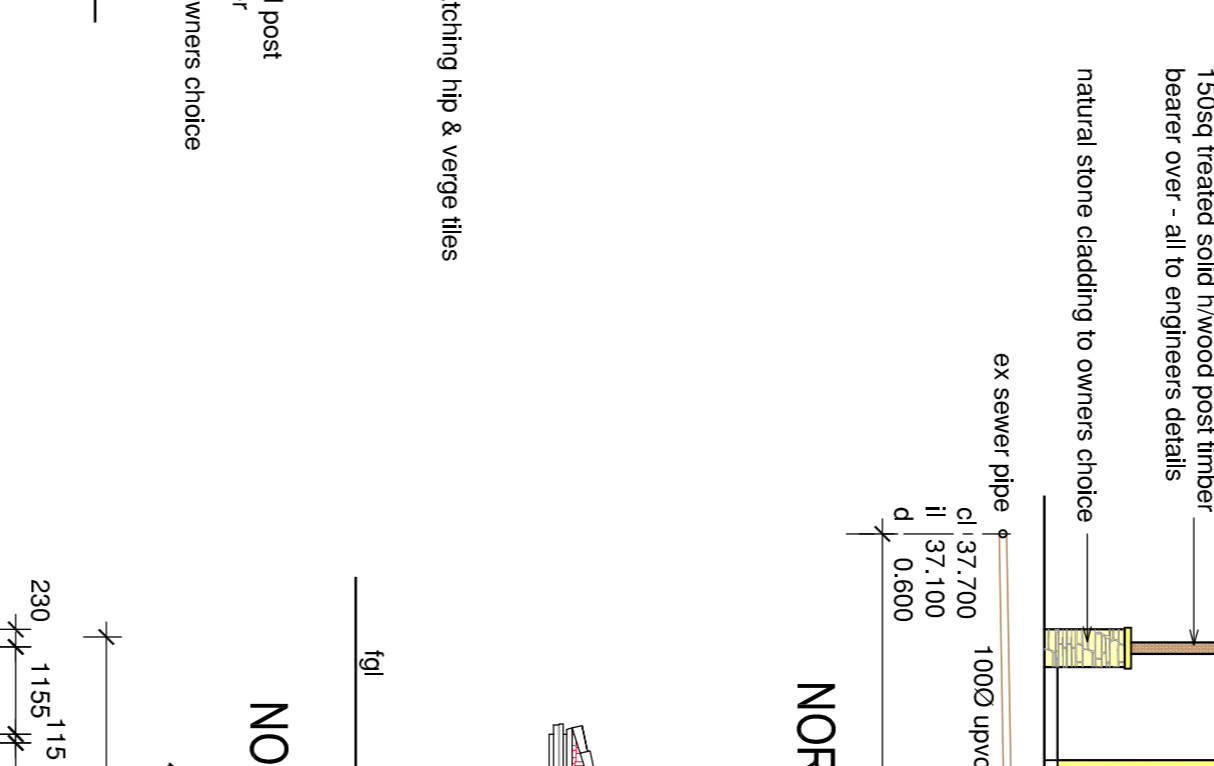
SOUTH EAST ELEVATION

SECTION F-F

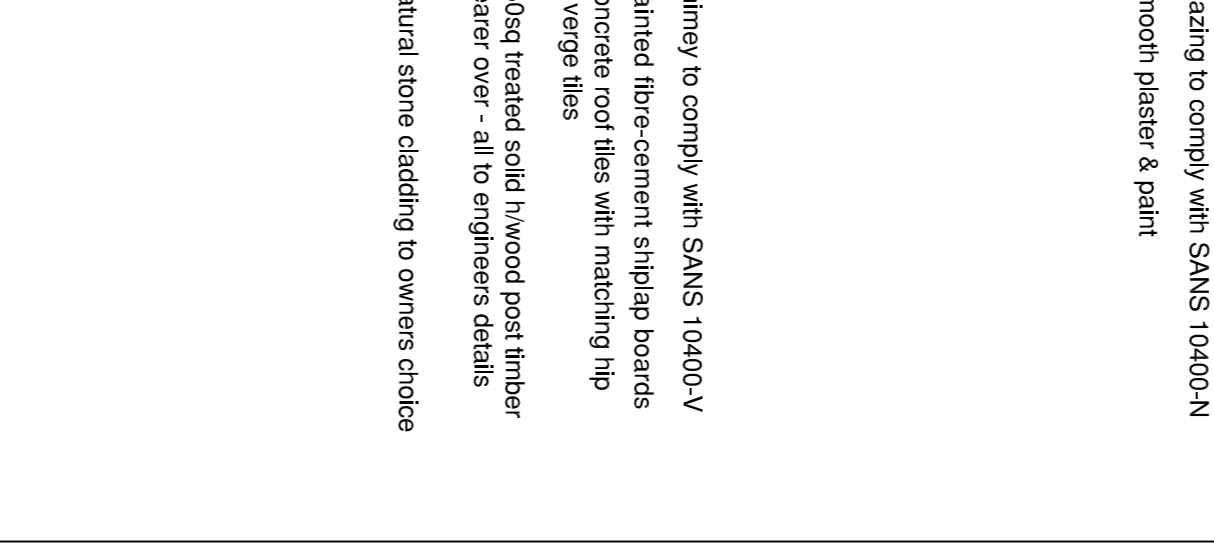
NORTH EAST ELEVATION



concrete roof tiles with matching hip & verge tiles  
 re-inforced concrete slab roof & beams to engineer's detail and specification - waterproofed, screeded and laid to falls to tubore outlets by specialist.  
 150sqg treated solid h/wood post primed & epoxied to concrete capping to top of brick pier, with 225 x 75 timber bearer over securely bracketed to posts - all to engineers details  
 smooth plaster & paint  
 150sqg treated solid h/wood post primed & epoxied to concrete capping to top of brick pier, with 225 x 75 timber bearer over securely bracketed to posts - all to engineers details  
 powder coated aluminium windows by specialist glazing to comply with SANS 10400-N  
 natural stone cladding to owners choice  
 1m high balustrade to comply with SANS 10400 - D  
 natural stone cladding to owners choice



concrete roof tiles with matching hip & verge tiles  
 150sqg treated solid h/wood post primed & epoxied to concrete capping to top of brick pier, with 225 x 75 timber bearer over securely bracketed to posts - all to engineers details  
 powder coated aluminium "QCEE" profiled seamless gutters fixed to painted fascia board  
 150sqg treated solid h/wood pmlber bearer - all to engineers details  
 existing roof structure to be removed  
 powder coated aluminium windows by specialist glazing to comply with SANS 10400-N  
 concrete roof tiles with matching hip & verge tiles  
 smooth plaster & paint  
 150sqg treated solid h/wood post with 225 x 75 timber bearer  
 natural stone cladding to owners choice  
 ex bank

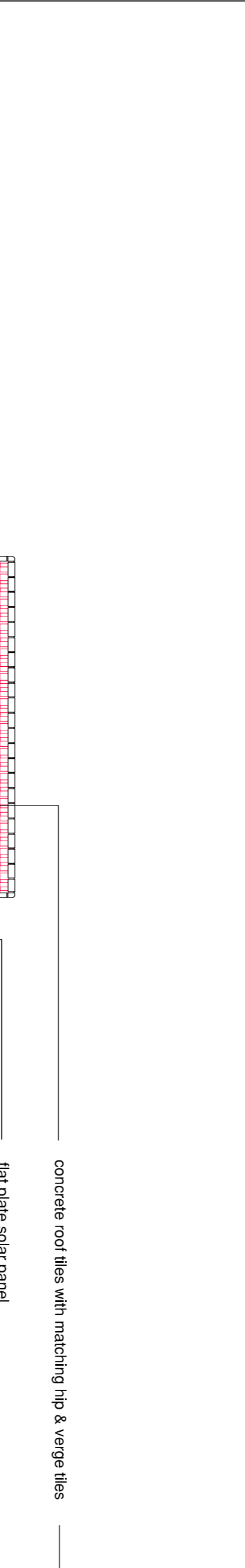


concrete roof tiles with matching hip & verge tiles  
 150sqg treated solid h/wood post primed & epoxied to concrete capping to top of brick pier, with 225 x 75 timber bearer over securely bracketed to posts - all to engineers details  
 powder coated aluminium "QCEE" profiled seamless gutters fixed to painted fascia board  
 150sqg treated solid h/wood post primed & epoxied to concrete capping to top of brick pier, with 225 x 75 timber bearer over securely bracketed to posts - all to engineers details  
 smooth plaster & paint  
 150sqg treated solid h/wood post primed & epoxied to concrete capping to top of brick pier, with 225 x 75 timber bearer over securely bracketed to posts - all to engineers details  
 powder coated aluminium windows by specialist glazing to comply with SANS 10400-N  
 natural stone cladding to owners choice  
 chimney to comply with SANS 10400-V  
 painted fibre-cement shinglep boards  
 concrete roof tiles with matching hip & verge tiles  
 150sqg treated solid h/wood post timber bearer over - all to engineers details  
 natural stone cladding to owners choice

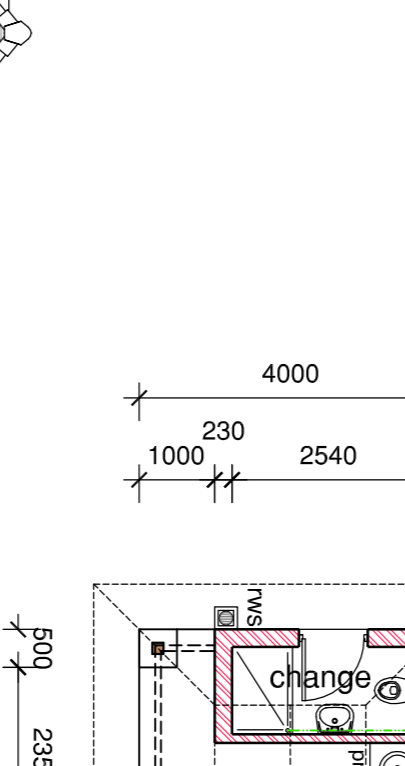
SOUTH WEST ELEVATION

NORTH WEST ELEVATION

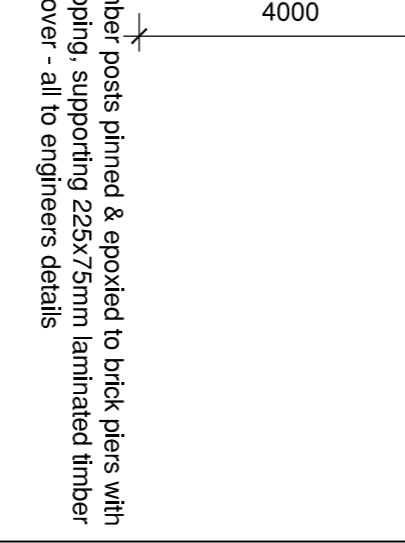
NORTH EAST ELEVATION



concrete roof tiles with matching hip & verge tiles  
 re-inforced concrete slab roof & beams to engineer's detail and specification - waterproofed, screeded and laid to falls to tubore outlets by specialist.  
 150sqg treated solid h/wood post with timber bearer - all to engineers details  
 smooth plaster & paint  
 150sqg treated solid h/wood post with timber bearer - all to engineers details  
 powder coated aluminium windows by specialist glazing to comply with SANS 10400-N  
 natural stone cladding to owners choice  
 150sqg gms post bracketed to brick piers with conc. capping, supporting rc slab over - all to engineers details



concrete roof tiles with matching hip & verge tiles  
 150sqg treated solid h/wood post primed & epoxied to concrete capping to top of brick pier, with 225 x 75 timber bearer over securely bracketed to posts - all to engineers details  
 smooth plaster & paint  
 150sqg treated solid h/wood post primed & epoxied to concrete capping to top of brick pier, with 225 x 75 timber bearer over securely bracketed to posts - all to engineers details  
 powder coated aluminium windows by specialist glazing to comply with SANS 10400-N  
 natural stone cladding to owners choice  
 chimney to comply with SANS 10400-V  
 painted fibre-cement shinglep boards  
 concrete roof tiles with matching hip & verge tiles  
 150sqg treated solid h/wood post timber bearer over - all to engineers details  
 natural stone cladding to owners choice

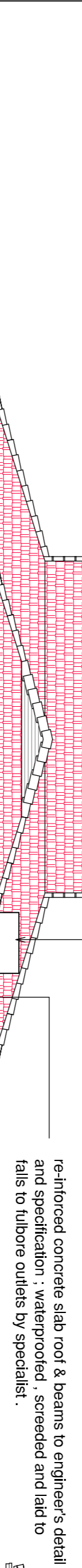


concrete roof tiles with matching hip & verge tiles  
 150sqg treated solid h/wood post primed & epoxied to concrete capping to top of brick pier, with 225 x 75 timber bearer over securely bracketed to posts - all to engineers details  
 smooth plaster & paint  
 150sqg treated solid h/wood post primed & epoxied to concrete capping to top of brick pier, with 225 x 75 timber bearer over securely bracketed to posts - all to engineers details  
 powder coated aluminium windows by specialist glazing to comply with SANS 10400-N  
 natural stone cladding to owners choice  
 chimney to comply with SANS 10400-V  
 painted fibre-cement shinglep boards  
 concrete roof tiles with matching hip & verge tiles  
 150sqg treated solid h/wood post timber bearer over - all to engineers details  
 natural stone cladding to owners choice

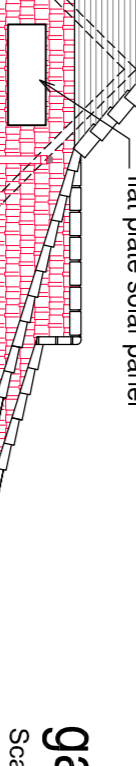
SOUTH WEST ELEVATION

NORTH WEST ELEVATION

NORTH EAST ELEVATION



concrete roof tiles with matching hip & verge tiles  
 re-inforced concrete slab roof & beams to engineer's detail and specification - waterproofed, screeded and laid to falls to tubore outlets by specialist.  
 150sqg treated solid h/wood post with timber bearer - all to engineers details  
 smooth plaster & paint  
 150sqg treated solid h/wood post with timber bearer - all to engineers details  
 powder coated aluminium windows by specialist glazing to comply with SANS 10400-N  
 natural stone cladding to owners choice  
 150sqg gms post bracketed to brick piers with conc. capping, supporting rc slab over - all to engineers details



concrete roof tiles with matching hip & verge tiles  
 150sqg treated solid h/wood post primed & epoxied to concrete capping to top of brick pier, with 225 x 75 timber bearer over securely bracketed to posts - all to engineers details  
 smooth plaster & paint  
 150sqg treated solid h/wood post primed & epoxied to concrete capping to top of brick pier, with 225 x 75 timber bearer over securely bracketed to posts - all to engineers details  
 powder coated aluminium windows by specialist glazing to comply with SANS 10400-N  
 natural stone cladding to owners choice  
 chimney to comply with SANS 10400-V  
 painted fibre-cement shinglep boards  
 concrete roof tiles with matching hip & verge tiles  
 150sqg treated solid h/wood post timber bearer over - all to engineers details  
 natural stone cladding to owners choice

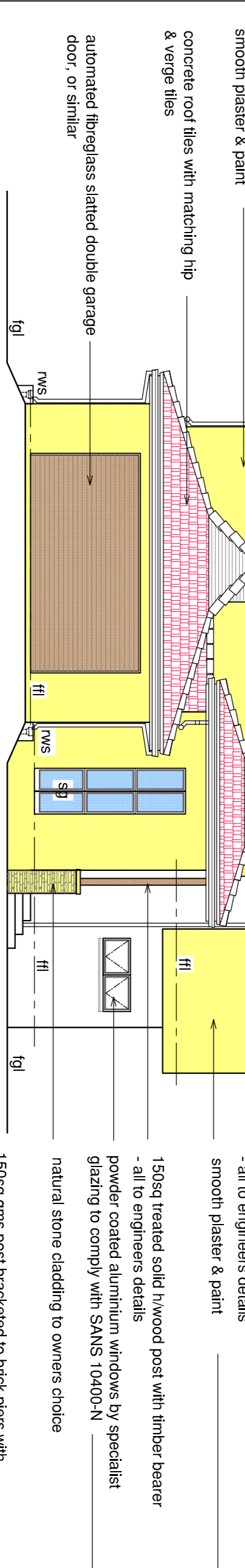


concrete roof tiles with matching hip & verge tiles  
 150sqg treated solid h/wood post primed & epoxied to concrete capping to top of brick pier, with 225 x 75 timber bearer over securely bracketed to posts - all to engineers details  
 smooth plaster & paint  
 150sqg treated solid h/wood post primed & epoxied to concrete capping to top of brick pier, with 225 x 75 timber bearer over securely bracketed to posts - all to engineers details  
 powder coated aluminium windows by specialist glazing to comply with SANS 10400-N  
 natural stone cladding to owners choice  
 chimney to comply with SANS 10400-V  
 painted fibre-cement shinglep boards  
 concrete roof tiles with matching hip & verge tiles  
 150sqg treated solid h/wood post timber bearer over - all to engineers details  
 natural stone cladding to owners choice

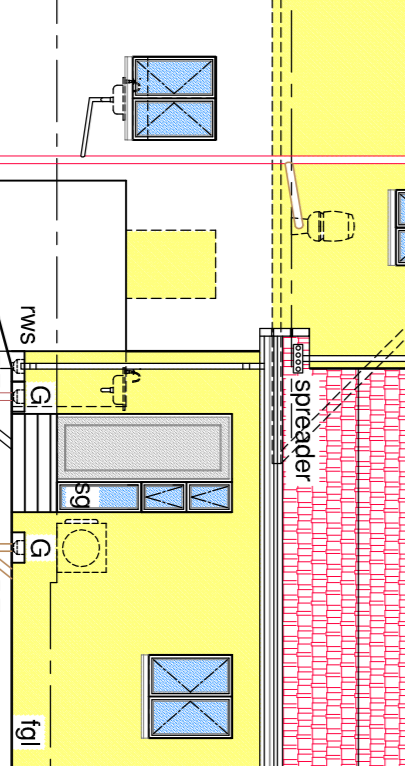
SOUTH WEST ELEVATION

NORTH WEST ELEVATION

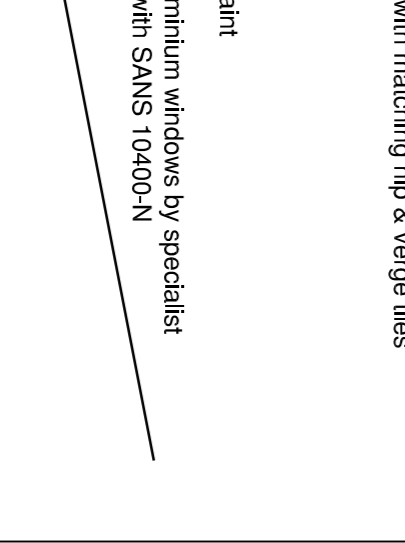
NORTH EAST ELEVATION



concrete roof tiles with matching hip & verge tiles  
 re-inforced concrete slab roof & beams to engineer's detail and specification - waterproofed, screeded and laid to falls to tubore outlets by specialist.  
 150sqg treated solid h/wood post with timber bearer - all to engineers details  
 smooth plaster & paint  
 150sqg treated solid h/wood post with timber bearer - all to engineers details  
 powder coated aluminium windows by specialist glazing to comply with SANS 10400-N  
 natural stone cladding to owners choice  
 150sqg gms post bracketed to brick piers with conc. capping, supporting rc slab over - all to engineers details



concrete roof tiles with matching hip & verge tiles  
 150sqg treated solid h/wood post primed & epoxied to concrete capping to top of brick pier, with 225 x 75 timber bearer over securely bracketed to posts - all to engineers details  
 smooth plaster & paint  
 150sqg treated solid h/wood post primed & epoxied to concrete capping to top of brick pier, with 225 x 75 timber bearer over securely bracketed to posts - all to engineers details  
 powder coated aluminium windows by specialist glazing to comply with SANS 10400-N  
 natural stone cladding to owners choice  
 chimney to comply with SANS 10400-V  
 painted fibre-cement shinglep boards  
 concrete roof tiles with matching hip & verge tiles  
 150sqg treated solid h/wood post timber bearer over - all to engineers details  
 natural stone cladding to owners choice



concrete roof tiles with matching hip & verge tiles  
 150sqg treated solid h/wood post primed & epoxied to concrete capping to top of brick pier, with 225 x 75 timber bearer over securely bracketed to posts - all to engineers details  
 smooth plaster & paint  
 150sqg treated solid h/wood post primed & epoxied to concrete capping to top of brick pier, with 225 x 75 timber bearer over securely bracketed to posts - all to engineers details  
 powder coated aluminium windows by specialist glazing to comply with SANS 10400-N  
 natural stone cladding to owners choice  
 chimney to comply with SANS 10400-V  
 painted fibre-cement shinglep boards  
 concrete roof tiles with matching hip & verge tiles  
 150sqg treated solid h/wood post timber bearer over - all to engineers details  
 natural stone cladding to owners choice

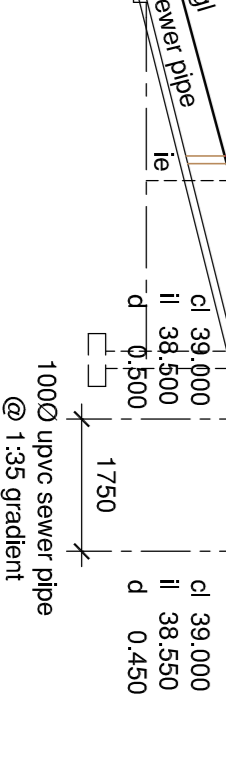
SOUTH WEST ELEVATION

NORTH WEST ELEVATION

NORTH EAST ELEVATION



concrete roof tiles with matching hip & verge tiles  
 re-inforced concrete slab roof & beams to engineer's detail and specification - waterproofed, screeded and laid to falls to tubore outlets by specialist.  
 150sqg treated solid h/wood post with timber bearer - all to engineers details  
 smooth plaster & paint  
 150sqg treated solid h/wood post with timber bearer - all to engineers details  
 powder coated aluminium windows by specialist glazing to comply with SANS 10400-N  
 natural stone cladding to owners choice  
 150sqg gms post bracketed to brick piers with conc. capping, supporting rc slab over - all to engineers details



concrete roof tiles with matching hip & verge tiles  
 150sqg treated solid h/wood post primed & epoxied to concrete capping to top of brick pier, with 225 x 75 timber bearer over securely bracketed to posts - all to engineers details  
 smooth plaster & paint  
 150sqg treated solid h/wood post primed & epoxied to concrete capping to top of brick pier, with 225 x 75 timber bearer over securely bracketed to posts - all to engineers details  
 powder coated aluminium windows by specialist glazing to comply with SANS 10400-N  
 natural stone cladding to owners choice  
 chimney to comply with SANS 10400-V  
 painted fibre-cement shinglep boards  
 concrete roof tiles with matching hip & verge tiles  
 150sqg treated solid h/wood post timber bearer over - all to engineers details  
 natural stone cladding to owners choice

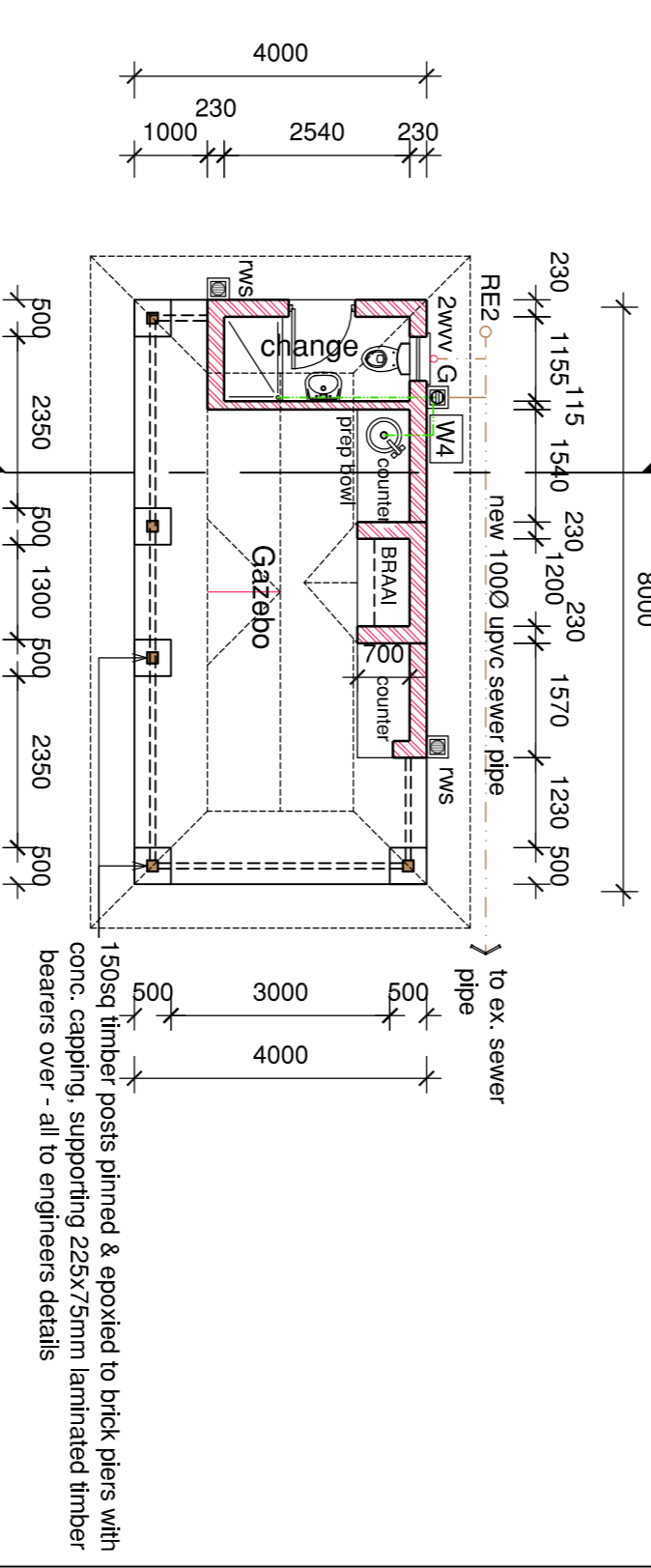


concrete roof tiles with matching hip & verge tiles  
 150sqg treated solid h/wood post primed & epoxied to concrete capping to top of brick pier, with 225 x 75 timber bearer over securely bracketed to posts - all to engineers details  
 smooth plaster & paint  
 150sqg treated solid h/wood post primed & epoxied to concrete capping to top of brick pier, with 225 x 75 timber bearer over securely bracketed to posts - all to engineers details  
 powder coated aluminium windows by specialist glazing to comply with SANS 10400-N  
 natural stone cladding to owners choice  
 chimney to comply with SANS 10400-V  
 painted fibre-cement shinglep boards  
 concrete roof tiles with matching hip & verge tiles  
 150sqg treated solid h/wood post timber bearer over - all to engineers details  
 natural stone cladding to owners choice

SOUTH WEST ELEVATION

NORTH WEST ELEVATION

NORTH EAST ELEVATION



gazebo plan  
 Scale 1:100

Occupancy : H4

**HKA**  
 HARFORD KAGER ARCHITECTS  
 studio : 81 nas station street  
 durban 4001  
 phone : 031 4098249  
 email : harfordkager@gmail.com  
 A T C H I T E C T S  
 SANCIP: P/S-MON 1 5101327

CLIENT / OWNER DETAILS:  
**L. Pillay & S. Soobratni**

CLIENT'S OWNERS SIGNATURE:  
 PROJECT TITLE:  
**Proposed Additions & Alterations to Existing Dwelling, Gazebo & Swimming Pool on Lot 2038 Durban North at 23 Dorrington Crescent**

DRAWING TITLE:  
**Submission Drawing**

DRAWING DESCRIPTION	Elevations
SCALE	1:100 (A1)
PROJECT NO.	23_010_03
ISSUED DATE	18-06-2023
DESIGNED BY	HK