

23 PRINCESS ALICE AVENUE

A: MOTIVATION/INCEPTION REPORT – Major Deviations with Photographs

B: PICTURES of House before and after

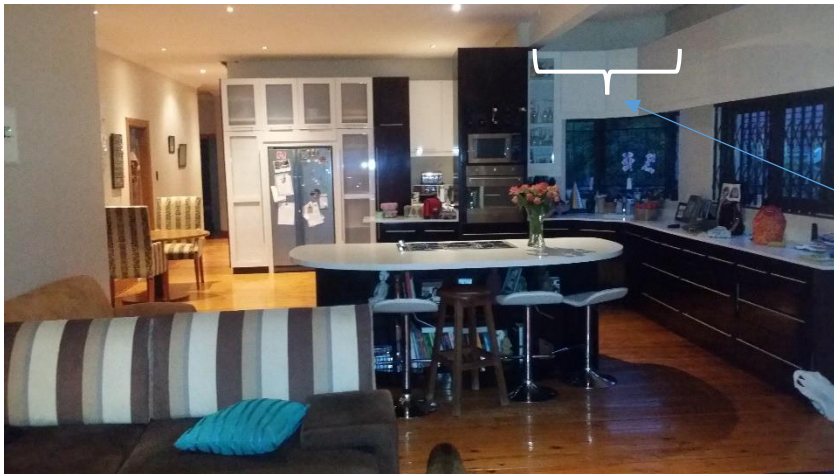
<https://www.google.co.za/maps/place/23+Princess+Alice+Ave,+Bulwer,+Berea,+4083/@-29.861983,30.988653,17z/data=!3m1!4b1!4m5!3m4!1s0x1ef7a9f68953aa61:0xaf035aceaae08edc!8m2!3d-29.861983!4d30.990847>

There was no deviation to the originally built section of the house. All materials was salvaged and reused. Oregon Pine flooring was sourced second hand and used for flooring of the new section. All doorframes and doors were restored and reused. All original window frames were sanded and restored. The original clay tiles were sourced and matched to existing (on the new roof section).

All ceilings were replaced and lighting changed to LED lights. The house was completed rewired and plumbed.

## A: Major Deviations with Photographs.

1. Kitchen wall extended out by 1,5m over the balcony. (*Deviation 8*)
  - a. This was done to improve the layout of the kitchen and create a bigger space for the open plan kitchen.



Extension by 1.5m onto balcony over garage

2. Roof designed to cover the full width of the extension (*Deviation 22*)
  - a. Over the extended kitchen,
  - b. the stairway (original design was for a concrete slab) and
  - c. main bedroom en-suite which would have resulted in a lower ceiling height on the original plan.



3. Direction of stairs changed, windows added to staircase and toilet added under staircase.  
(Deviation 9, 16, 18)



4. En-suite added to existing Bedroom 4 and guest bathroom made smaller with toilet and shower (*Deviation 2 and 3*)



**B: PICTURES OF HOUSE BEFORE AND AFTER ADDITIONS,  
ALTERATION AND RENOVATION**



Above Before and below After alterations and additions.





Above Before (which shows the addition from 1971) and below After, demolition, alterations and additions



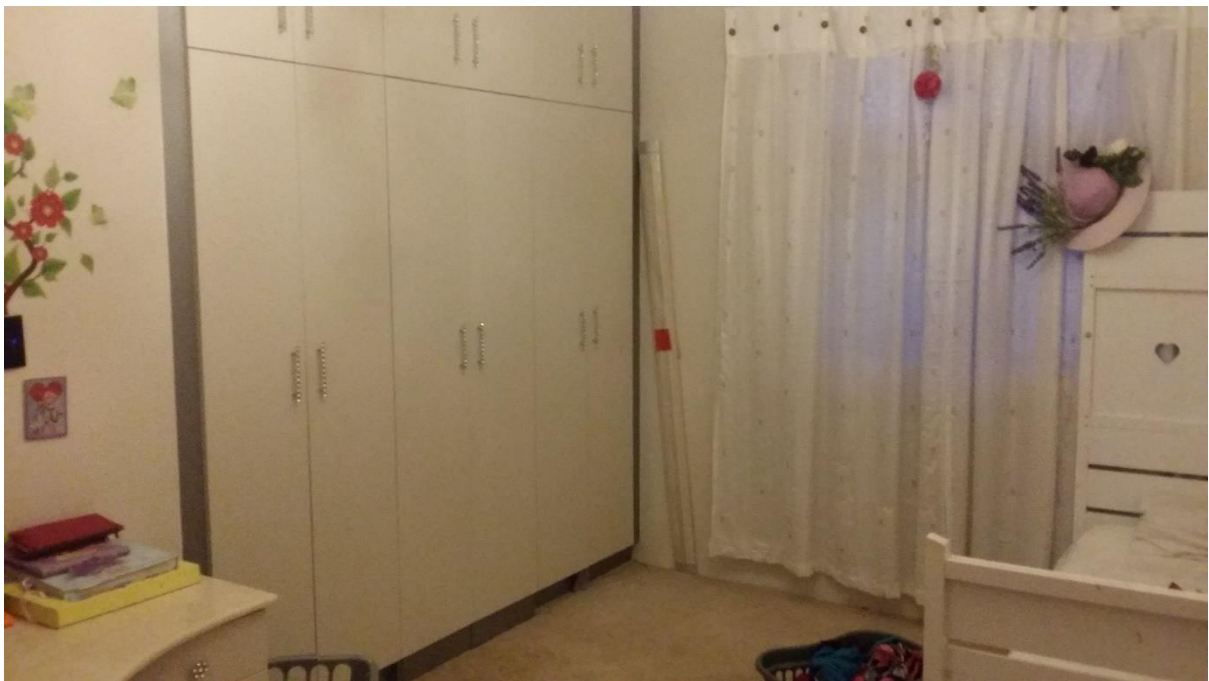


Previous Dining and Living Room converted to Kitchen

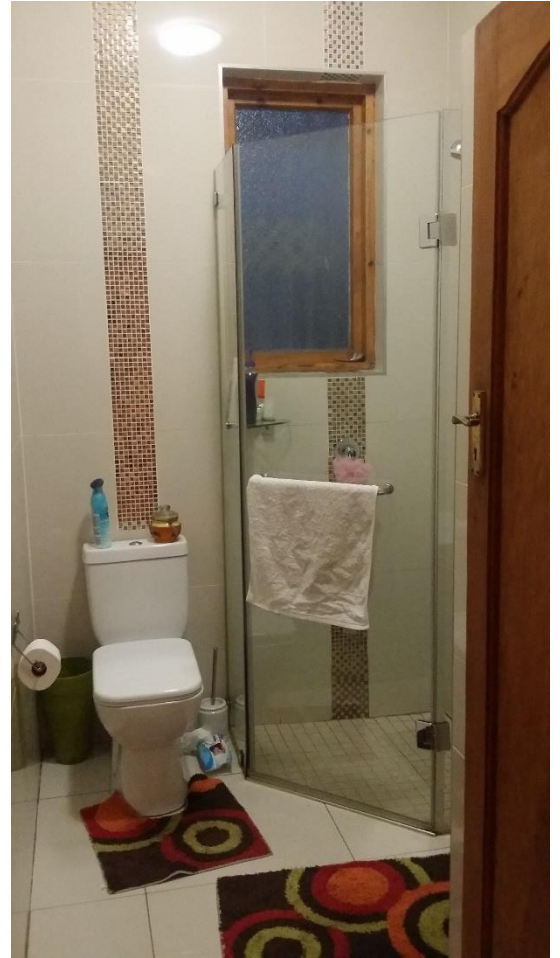




Previous Kitchen converted to Bedroom and En-suite







Previous Toilet and bath converted to guest Toilet and Shower (Frames and doors stripped and restored)



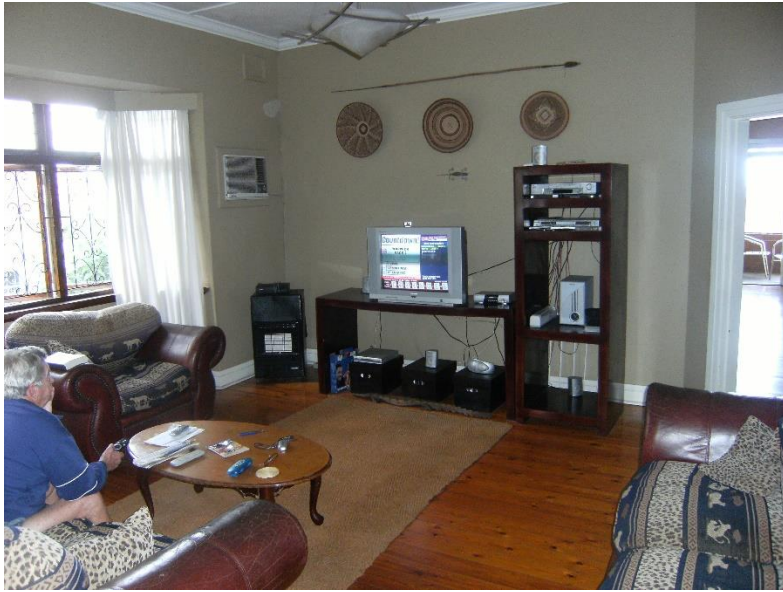
Previous Bedroom retained and addition of En-suite shower and toilet





Previous Bedroom converted to Dining Room





Lounge Before and after

