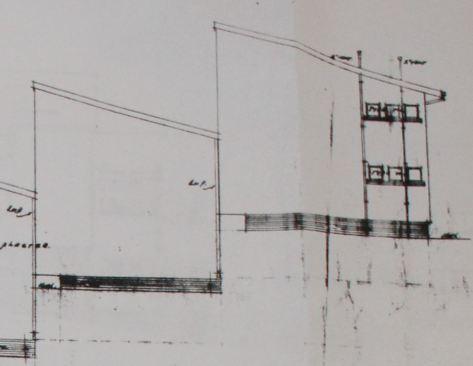


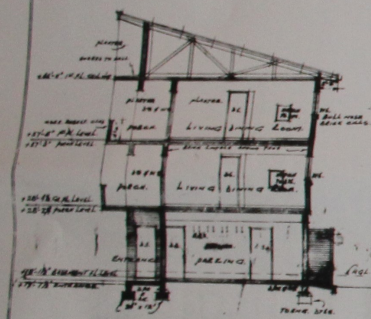
SOUTH EAST ELEVATION

Approved subject to revision of drawings to be accompanied in the original quantities to be issued now

UMHLANGA ROCKS HEALTH COMMITTEE  
20 APR 1951



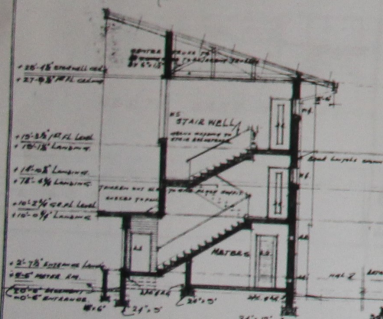
NORTH WEST ELEVATION



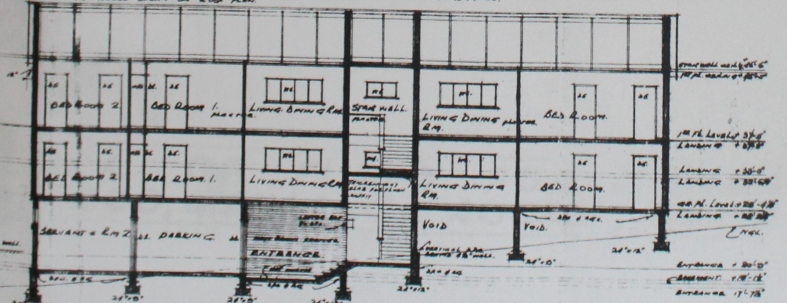
SECTION B B

DOOR & FRAME SCHEDULE					
TYPE	SIZE	FRAME	DOOR DETAILS	FURNITURE DETAILS ETC	NO. REQD.
D1	2'0" x 2'6" x 7/8"	7/8" x 3" HARD WOOD	FRAMED, LINED, REAR & BITTERED IN 2 LEAVES, WITH REAR & BITTERED STILES, SOFT WOOD, STILES & TOP RAIL 1 1/2" x 1 1/2" MOULD & BOTTOM RAILS 1 1/2" x 1 1/2" REAR & BITTERED 1/2" x 1/2" V-JOINTED & V-JOINTED ALL ROUND	TWO 1/2" DIA. & STEEL BUSH ONE HEAVY DUTY HANG & STAPLE COMPLETE WITH PAD LOCK	2
D2	2'8" x 6'0" x 1 1/2"	1/2" x 3" AREA	FULLY LINED HARD WOOD DOOR, STILES & TOP RAIL 1 1/2" x 1 1/2" LINDERS 0.0.2" x 1 1/2" FINISHED THICKNESS, SET AT 1 1/2"	NIGHT LATCH AS SUPPLIED BY THE DURBAN MUNICIPAL ELECTRICAL DEPARTMENT.	1
D3	2'8" x 6'0" x 1 1/2"	1/2" x 3" AREA	FLOOR PANEL DOOR WITH TWO CONVEXED EDGES, SUITABLE FOR EXPOSURE EXTERNAL CONDITIONS	MORTICE LOCKS & CROSS PARTITIONER, TALL FIVE DOOR CLOSERS TO DOORS BETWEEN PARTITIONERS	1
D4	2'8" x 6'0" x 1 1/2"	1/2" x 3" AREA	FLOOR PANEL DOOR WITH TWO CONVEXED EDGES, HARD WOOD, STILES ATTACHED & TOLA VANAS, INTERMEDIATE MOULDING & PROJECTIONS FINISH, BUSHES WITH GLASS TO STOP @ REAR TOP & BOTTOM	MORTICE LOCK & REAR PARTITIONER	1
D5	2'8" x 6'0" x 1 1/2"	1/2" x 3" AREA	FLOOR PANEL DOOR WITH TWO CONVEXED EDGES WITH TOLA VANAS BOTH SIDES	MORTICE LOCK & REAR PARTITIONER	1
D6	2'16" x 6'0" x 1 1/2"	1/2" x 3" AREA	AS ABOVE (NOTE TO BED ROOM) - HARD WOOD, HARD WOOD STILES & TOP RAIL 1 1/2" x 1 1/2" MOULD & BOTTOM RAILS 1 1/2" x 1 1/2" REAR & BITTERED 1/2" x 1/2" V-JOINTED & V-JOINTED ALL ROUND	AS ABOVE	1
D7	2'8" x 6'0" x 1 1/2"	1/2" x 3" AREA	AS ABOVE WITH 3 VERTICAL CLEAR WEAR STRIPS, REAR STILES, TOP & BOTTOM RAILS 1 1/2" x 1 1/2" THREE REAR CLEARING BUSHES 1 1/2" DIA WITH REAR SEAL	AS ABOVE & WITH ONE 1" DIA TYPE REAR LABEL BUSH AT BOTTOM TO SECURE BUSH ON REAR PARTITIONER TO PREVENT BUSH FROM SLIPING OFF	1
D8	2'8" x 6'0" x 1 1/2"	1/2" x 3" AREA	AS ABOVE BUT WITH REAR SET WITH REAR MEETING STILES, BUSH IN THE LEAVES	AS ABOVE PARTITIONER & BUSH PARTITIONER, BUSHES REAR BUSH REAR SET MID OF DOOR, BUSH REAR BUSH REAR	1

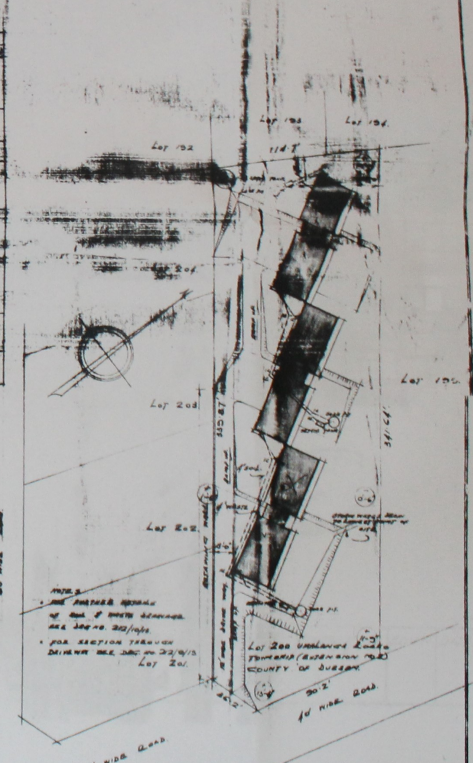
ROOF  
CONCRETE ROOFING ON 3" x 2" PILING AT 4' x 4' ON TRUSSES AT 4' x 4' ON 1 1/2" x 1 1/2" WALL PLATE  
MIN. 2" x 2" RAFTERS & TRUSSES 4' x 1 1/2". CEILING 1 1/2" x 1 1/2"  
SHEATHING 1 1/2" x 1 1/2" TO RECEIVE "HOT BOARD" & 2" WOODEN CEILING  
OVER 1/2" PAINT TO PAPERED & FINISHED. DOUBLE VERTICAL CLIPPING FIBER OUT OF 2" x 1 1/2"  
SQUARE ANGLE STRIPS 1 1/2" x 1 1/2" @ 4' x 4' ON 3" x 2" PILING  
SEVERAL FEET TO BE COVERED WITH FIBER SHEATHING OF 1 1/2" x 1 1/2" FINISHES WITH BITUMEN ENTIRE  
AND WOOD VANGS UNDER ROOF ON ROOF PLAN



SECTION A A



SECTION C C



SITE PLAN SCALE 1" TO 40'

SCALE 1" TO 8'-0"  
DATE 13.2.50  
DRAWN: SLS

WORKING DRAWING - SECTIONS, ELEVATIONS & SITE PLAN (SCALE 1" TO 40')

**BLOCK OF FLATS FOR CONNAGE INT. PTY. LTD.**  
**LOT 200, UMHLANGA ROCKS, N. COAST, NATAL.**

EDIT'D DATE DRAWING NO. 212/8/51  
WILLIAM M. KERR, M.I.A. ARCHITECT,  
1013 SANLAM STREET,  
SMITH STREET, DURBAN.