



38 Jacaranda Street, Arboretum, Richards Bay

P.O. Box 101672, Meerensee, 3901

Telephone: 035 789 0632 / 078 284 9332 Fax: 086 535 8846

Website: www.emveloconsultants.co.za E-mail: info@emveloconsultants.co.za

Integrity | Honesty | Excellence



BACKGROUND INFORMATION

The EIA in Support of Atmospheric Emission License Application for Intention to Operate the Naravest Properties Coal Stockpiling Facility, on Portion 5 Lot K26 Farm No. 12453, Adjacent to eNseleni Rail Station, Ward 2 of uMfholozi Local Municipality, King Cetshwayo District Municipality, KZN.

16 FEBRUARY 2023

Prepared By:

**Emvelo Quality and Environmental Consultant
(PTY) Ltd**

Prepared For:

Naravest Properties (PTY) Ltd.



INTRODUCTION/BACKGROUND

Envelo Quality and Environmental Consultant has been appointed by Naravest Properties, for the proposed Operation of the Naravest Properties Coal Stockpiling Facility, on Sub 5 Lot K26 Farm No.12453 adjacent to eNseleni Rail Station, within Ward 2 of uMfolozi Municipality, King Cetshwayo District, KwaZulu Natal.

Consequently, the Environmental Impact Assessment (EIA) will commence to assist Naravest Properties (PTY) Ltd. in identifying all potential adverse environmental consequences of the project, their extent, significance and to ensure that the environmental management requirements are adequately implemented.

The purpose of this Background Information Document (BID) is to provide you, as an Interested or Affected Party (I&AP), with a brief description of the EIA process to be undertaken and to obtain comments and contributions from I&AP's with regards to the potential impacts to the environment by the proposed project.

PROJECT DESCRIPTION

The proposed development facility has a capacity to handle 75 000 tons or 212 376.35m³ of coal per month. The facility will

have the following infrastructure to support the coal handling operations:

- ✚ Pollution collection dam;
- ✚ Stormwater system;
- ✚ Paved stockpiling area;
- ✚ Site offices;
- ✚ Two (2) guard houses and weighbridge offices;
- ✚ Trucks parking bay;
- ✚ Back-up generator facility; and
- ✚ Pump station facility for dust suppression which will be fitted with sprinkler poles.

The water from the stormwater will be channelled to the collection dam and will be pumped back to tanks and used for dust suppression. The sludge remaining from the pollution collection dam will be disposed off at a licensed waste facility through the service of a certified waste service provider.

PROJECT LOCATION

The project will take place on Sub 5 of Lot K26 No.12453 on D249 road along Enseleni Rail Station, in Ward 2 uMfolozi Municipality Local Municipality, King Cetshwayo District Municipality, KZN.

Table 1: Site Co-ordinates

Facility Perimeter	
Corner 1	28°40'35.28"S, 32° 2'42.85"E
Corner 2	28°40'33.12"S, 32° 2'44.81"E
Corner 3	28°40'29.73"S, 32° 2'39.10"E
Corner 4	28°40'31.86"S, 32° 2'36.99"E

WHAT IS AN ENVIRONMENTAL IMPACT ASSESSMENT?

An Environmental Impact Assessment (EIA) is an effective planning and decision-making tool, which allows for the identification of potential adverse environmental consequences of a proposed project, and its management through the planning process.

In terms of the National Environmental Management Act, 1998 (Act No.107 of 1998), as read with the Environmental Impact Assessment (EIA) Regulations of 2014 as amended in 2017, an Environmental Authorization must be obtained from the relevant decision-making authority, the Department of Economic Development Tourism and Environmental Affairs prior to the commencement of any of the listed activities that may result in potential negative impacts on the environment. Thus, an environmental impact assessment is required. A **Scoping and Environmental Impact Assessment** that includes the public participation process will be performed.

ENVIRONMENTAL IMPACT ASSESSMENT PROCESS

In terms of the Environmental Impact Assessment (EIA) regulations, an independent Environmental Assessment Practitioner (EAP) must be appointed to conduct the EIA. Therefore, Envolo Consultant has been appointed by Naravest Properties to conduct the EIA.

Envolo Consultant will identify and assess the potential environmental impacts associated with the proposed activity by conducting an objective and independent EIA and WULA in which all the relevant information and opinions of Interested and Affected Parties (I&APs) will be collected and passed on to the Department of Economic Development and Environmental Affairs (EDTEA). In this way, an informed decision-making process can take place.

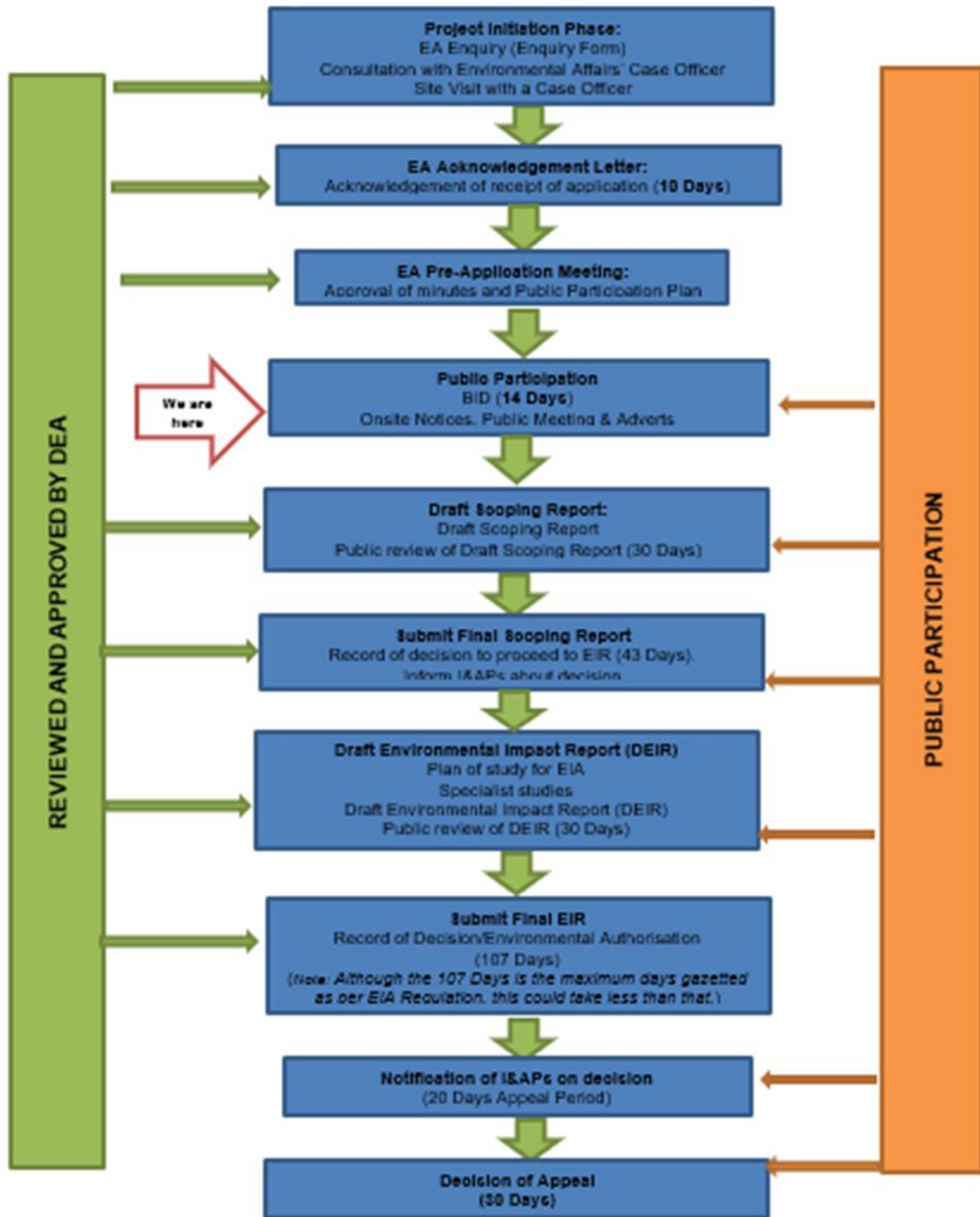


Figure 1: Scoping and EIA Process

LISTED ACTIVITIES TRIGGERED BY THIS PROJECT

The proposed project triggers the following listed activities of the EIA Listing Notices;

Table 2: Listed Activities

Activity No(s):	Provide the relevant Basic Assessment Activity(ies) as set out in Listing Notice 2 of the EIA Regulations, 2014 as amended.	Describe the portion of the proposed project to which the applicable listed activity relates.
28	<p>Commencing of an activity, which requires an atmospheric emission license in terms of section 21 of the National Environmental Management: Air Quality Act, 2004 (Act No. 39 of 2004), excluding-</p> <p>(i) activities which are identified and included in Listing Notice 1 of 2014;</p> <p>(ii) activities which are included in the list of waste management activities published in terms of section 19 of the National Environmental Management: Waste Act, 2008 (Act No. 59 of 2008) in which case the National Environmental Management: Waste Act, 2008 applies; or</p> <p>(iii) the development of facilities or infrastructure for the treatment of effluent, wastewater, or sewage where such facilities have a daily throughput capacity of 2000 cubic metres or less.</p>	<p>Sub 5 of the Farm Lot K26 no. 12453 eNseleni area under uMfolozi Local Municipality.</p> <p>Applicability: <i>The Naraverst Properties proposed the commencement of operation of the coal stockpiling facility. This operation is considered a noxious activity which require a license to operate an atmospheric emission generating activity.</i></p>

The NEMA, and the Environmental Impact Assessment (EIA) Regulations (2014) as amended in 2017, govern the process of applying for environmental authorization for certain developments. A provision in the EIA Regulations is made for two forms of assessment: Basic Assessment and Scoping & EIA, depending on the scope of the activity. The EIA regulations specify that: Activities identified in Listing Notice 1 and 3 (GNR 327 and 324 of 2017) requires a Basic Assessment while activities identified in Listing Notice 2 (GNR 325 of 2017) are subject to a Scoping and EIA.

The listed activity associated with the proposed development is **Listing Notice 2 , Activity 28**. Therefore, this application will follow two processes, which are the **Scoping and Environmental Impact Assessment Process**, as a result mentioned Listing Notice 2 triggered.

WHAT IS PUBLIC PARTICIPATION?

Public participation is the process that promotes information sharing, consultation, and active involvement amongst stakeholders, and all interested and affected parties.

During the Public Participation Process, input from the proponent, technical experts, government authorities and the public will be gathered to result in a better understanding of the project for all involved thus ensuring an informed decision-making throughout the process.

REGISTRATION OF INTERESTED AND AFFECTED PARTIES.

Any person, company, authority or other entity that might be directly or indirectly affected by the proposed activity is invited to register as an I&AP, in order to assist the EAP in identifying possible environmental, economic and social impacts of the proposed development and to make suggestions for mitigations. These comments will be included as part of the Scoping and Environmental Impact Assessment Report which will be submitted to the Department of Economic Development Tourism and Environmental Affairs.

Interested and affected parties (I&APs) may forward their written comments along with their contact details within 14 days from receiving the document to; **Phumzile Lembede**.

Postal address: P. O. Box 101672, Meerensee,3901;

Tel: 035 789 0632;

Fax: 086 577 5220,

Email: Info@emveloconsultants.co.za.

APPENDIX A: (LOCALITY MAP)

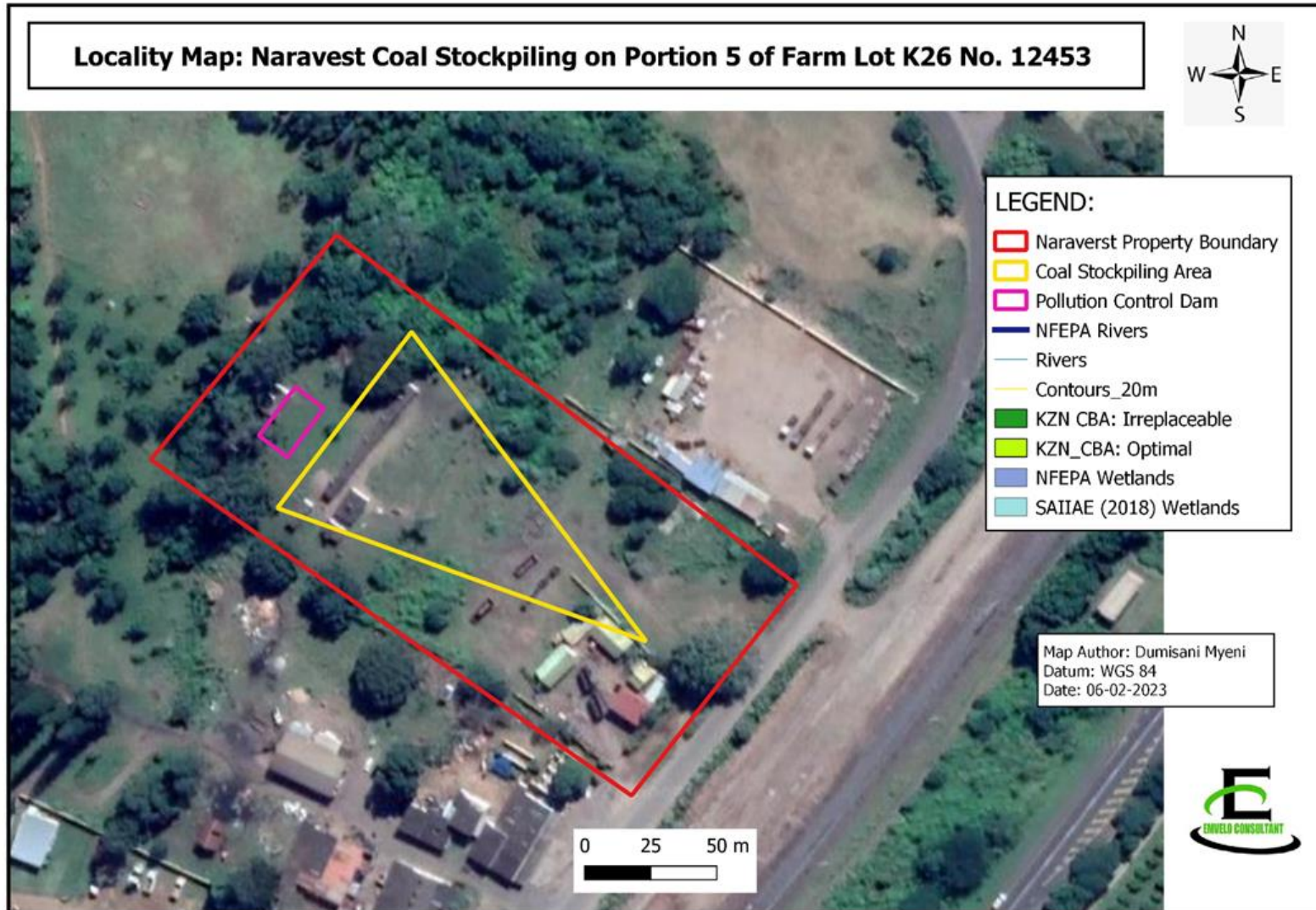


Figure 2: Map Showing Locality of Naravest Property Coal Stockpiling Facility at eNseleni

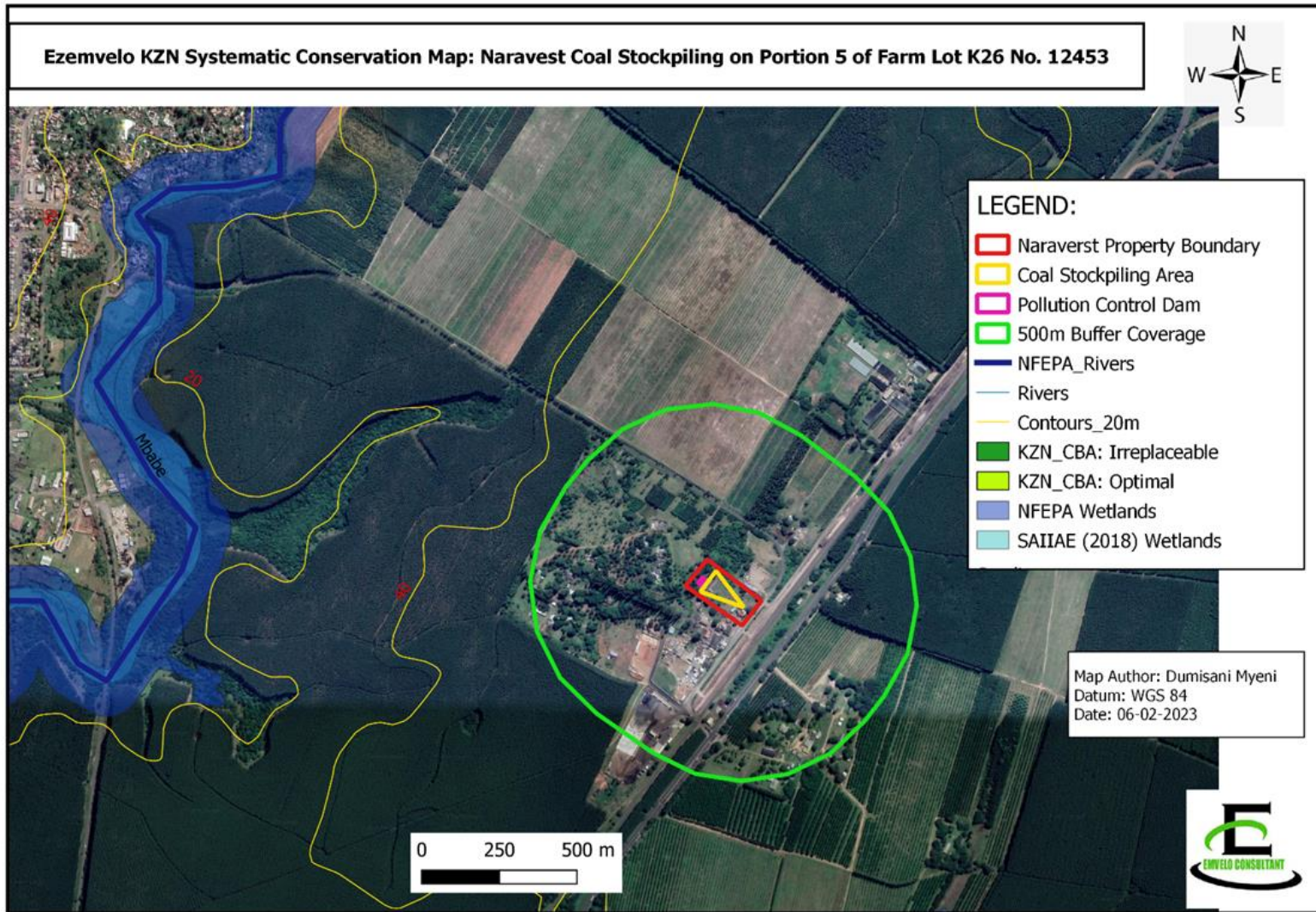


Figure 3: Sensitivity Map- For Naravest Properties Coal Stockpiling on Portion 5 of Farm Lot K26 No. 12453



Emvelo Quality and Environmental Consultant (PTY) Ltd
38 Jacaranda Street, Arboretum, Richards Bay, 3900.

P.O. Box 101672, Meerensee, 3901

Info@emveloconsultants.co.za

REGISTRATION AND COMMENT FORM

The EIA in Support of Atmospheric Emission License Application for Intention to Operate the Naravest Properties Coal Stockpiling Facility, on Portion 5 Lot K26 Farm No. 12453, Adjacent to Enseleni Rail Station, Ward 2 of uMfolozi Local Municipality, King Cetshwayo District Municipality, KZN

I wish to register as an interested and affected party and / or bring to the attention of Emvelo Consultant the following information.

<u>Personal Information</u>	
Name and Surname	
Company /organization	
Physical Address	
Postal address	
Telephone:	Cell:
Email:	
We would like you to inform us on a preferred and effective means of receiving documents and communication from us. <u>Method:</u> <u>Address:</u>	
<u>Comments</u>	

Signature

Date