



Plate 1 - Google Earth view of shop before fire damage.JPG



Plate 2 - Modern facade to structure.JPG



Plate 3 - Remains of previous plaster mouldings to front facade.JPG



Plate 4 - Damaged interior.JPG



Plate 5 - Damaged mezzanine.JPG



Plate 6 - Compromised beams that supported the mezzanine timber floor.JPG



Plate 7 - Steel beams built into side walls.JPG



Plate 8 - Side walls adjacent to neighbouring structures.JPG



Plate 9 - Steel beam supported on concrete pads.JPG



Plate 10 - Typical internal damage.JPG



Plate 11 - Steel beams incorporated in front facade.JPG



Plate 12 - Spalled brick piers that form part of the front facade.JPG



Plate 13 - Rear storage area with reinforced concrete columns beams and slab.JPG



Plate 14 - Spalled plaster around concrete columns.JPG



Plate 15 - Rear storage area beneath concrete beams and slabs with spalled plaster.JPG



Plate 16 - Rear gable compromised.JPG



Plate 17 - Compromised walls at rear storage area.JPG



Plate 18 - Remains of plaster moulding behind new modern front facade.JPG



Plate19 - Drone photograph indicates the extensive damage to the complex.JPG



Plate 20 - Drone photograph indicates details of side walls.JPG

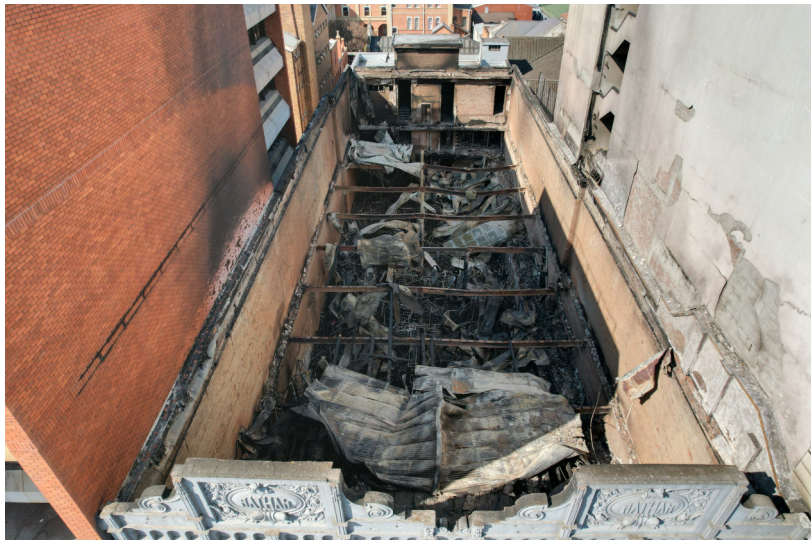


Plate 21 - Drone photograph indicating extensive fire damage.JPG