



# APPENDIX C:

## Maps



## APPENDICES

ENVIRONMENTAL IMPACT ASSESSMENT REPORT: Scoping and Environmental Impact Assessment (EIA) Process for the Proposed Development of a Solar Photovoltaic (PV) Facility (Kudu Solar Facility 4) and associated infrastructure, near De Aar, Northern Cape Province

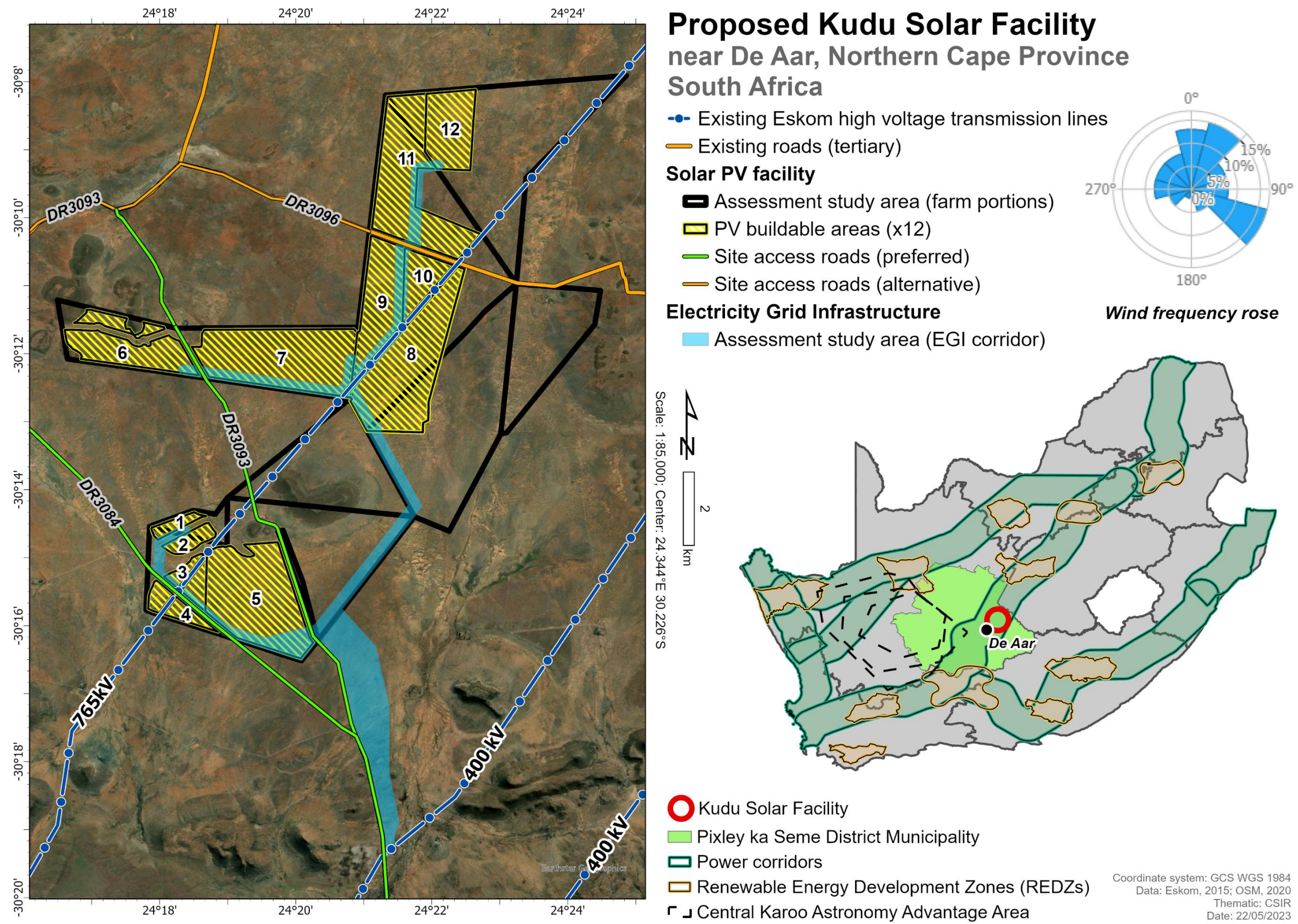
---



# CONTENTS

<b>LOCALITY MAP OF THE PROPOSED KUDU PROJECTS.</b>	<b>3</b>
<b>COMBINED ENVIRONMENTAL FEATURE MAP FOR THE PROPOSED PROJECT STUDY AREA.</b>	<b>4</b>
<b>COMBINED ENVIRONMENTAL SENSITIVITY MAP FOR THE PROPOSED PROJECT STUDY AREA.</b>	<b>5</b>
<b>PROJECT LAYOUT MAP</b>	<b>6</b>
<b>COMBINED PROJECT LAYOUT AND SENSITIVITY MAP.</b>	<b>7</b>



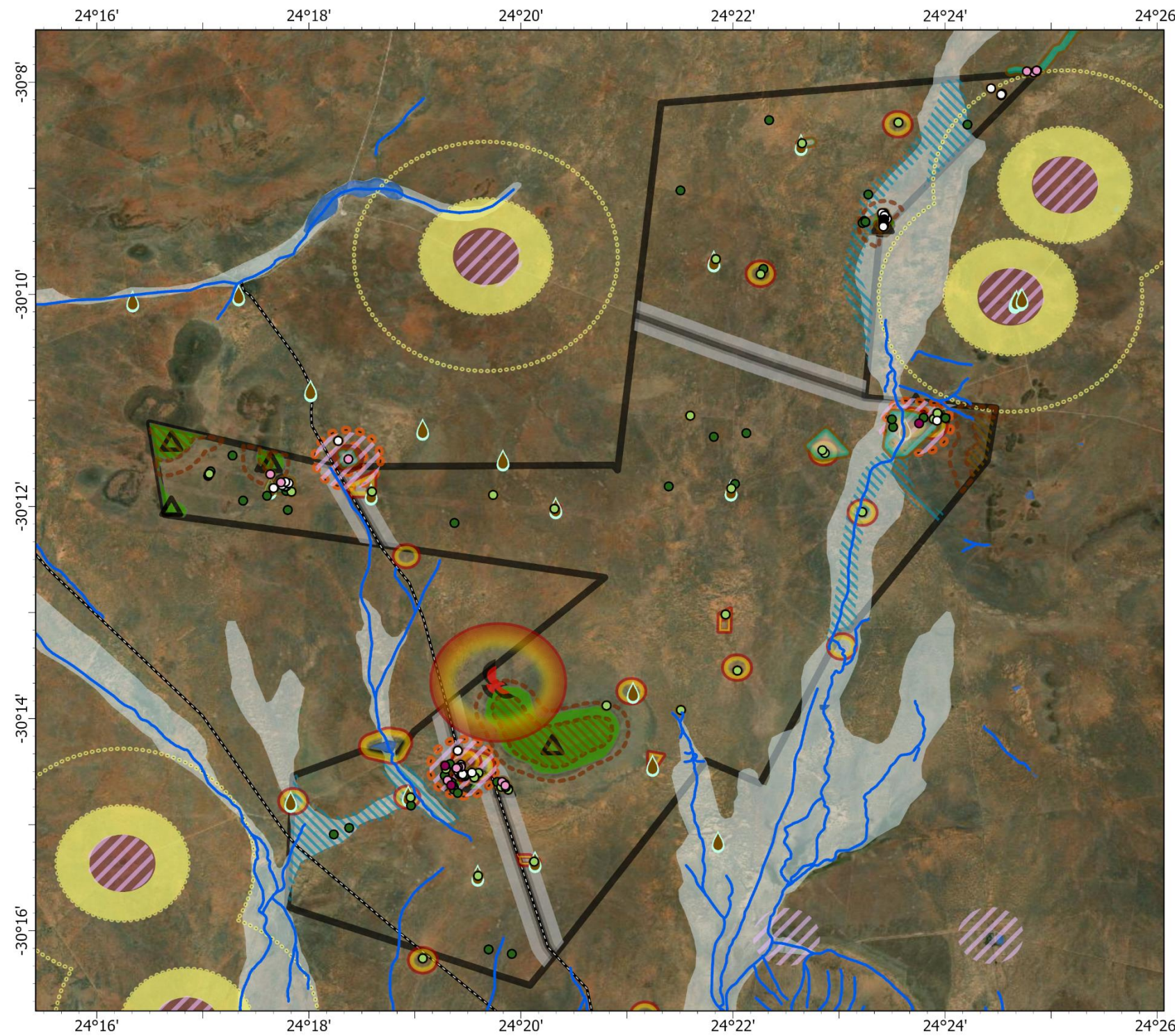


Locality Map of the Proposed Kudu Projects.

Note that the EGI Projects are not part of the current application and report. The EGI Projects will be considered separately at a later stage. The EGI corridor indicated in this Figure is indicative.



# Proposed Kudu Solar PV facility (1 - 12) near De Aar, Northern Cape Province South Africa



## Combined environmental features

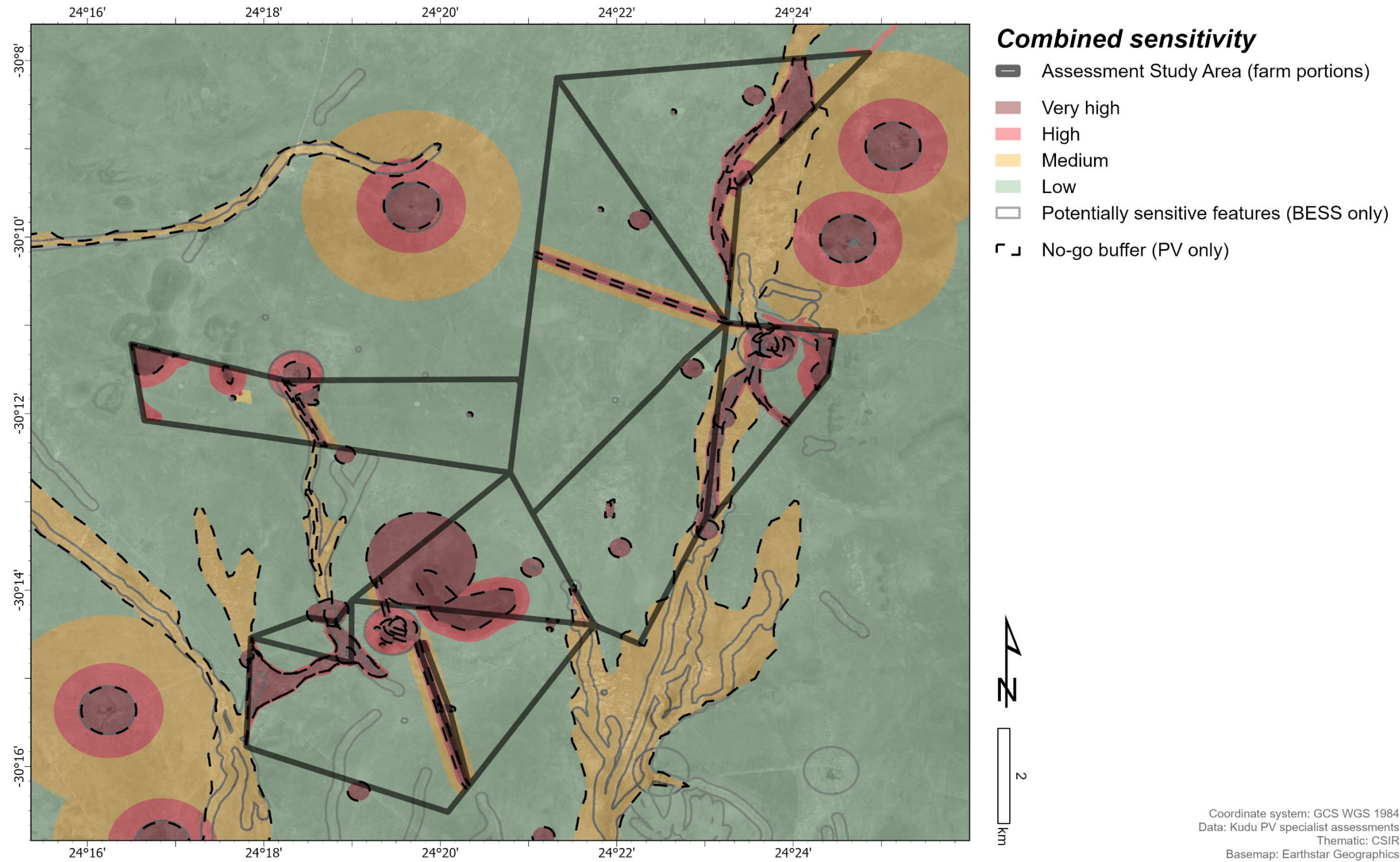
- ▣ Assessment study area
- Site access roads (preferred)
- Terrestrial ecology**
- ▲ Koppies
- Aquatic ecology**
- Watercourses (rivers, 35m; pans, 50m)
- Floodplains
- Avifauna**
- 🦅 Verreaux's eagle nest (1km)
- 📏 Waterpoint (mimumum 50 m)
- Visual and scenic resources**
- ▨ Drainage features (50m)
- ▨ Topographic features
- ▨ Topographic features (250m)
- Farmsteads (inside study area, 250m)
- Farmsteads (inside study area, 500m)
- Farmsteads (outside study area, 500m)
- Farmsteads (outside study area, 1km)
- Farmsteads (outside study area, 2km)
- Roads (50m)
- Roads (100m)
- Roads (250m)
- Safety, Health and Environment Risk**
- ▨ Farmsteads (500m, BESS only)
- Groundwater**
- 📍 Boreholes (50m, BESS only)
- Heritage features**
- Grading: IIIA
- Grading: IIIB
- Grading: GPA
- Grading: GPB
- Grading: GPC
- Heritage features (50m)

Coordinate system: GCS WGS 1984; Data: Kudu PV specialist assessments; Thematic: CSIR  
Basemap: Earthstar Geographics  
Date: 07/02/2023

Combined Environmental Feature Map for the proposed project study area.



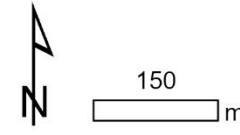
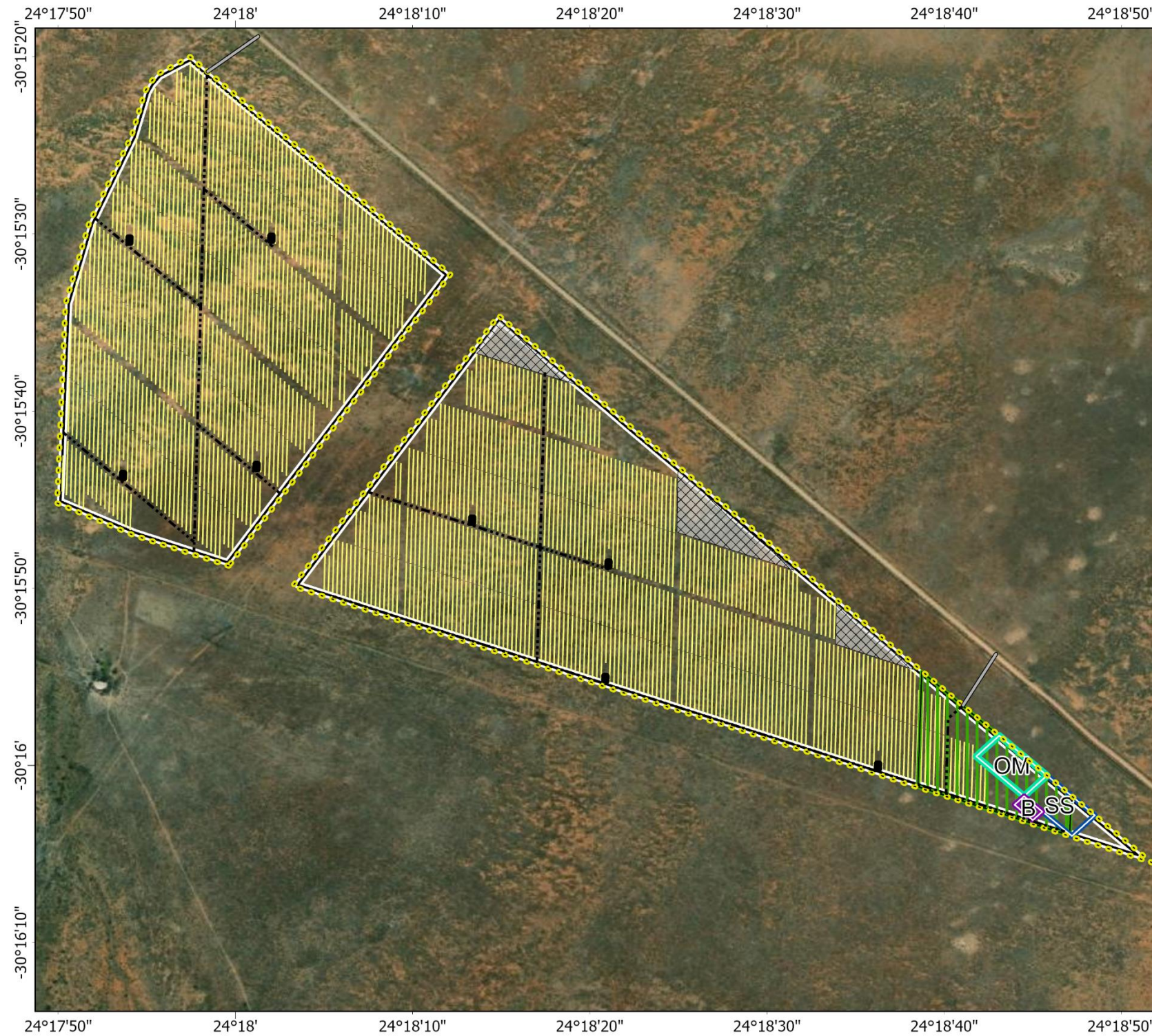
# Proposed Kudu Solar PV facility (1 - 12) near De Aar, Northern Cape Province South Africa



Combined Environmental Sensitivity Map for the proposed project study area.

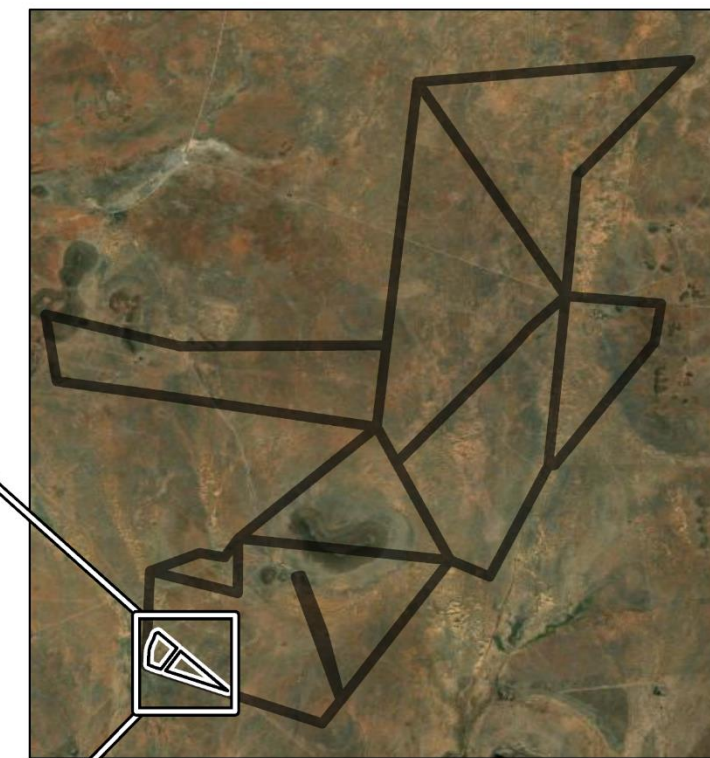


# Proposed Kudu Solar PV facility (4) near De Aar, Northern Cape Province South Africa



## PV 4 layout

- Buildable area / Development footprint
- PV modules
- Inverter
- Substation
- BESS
- On-site substation complex
- O&M building
- Laydown area
- Fence
- Access road
- Internal road



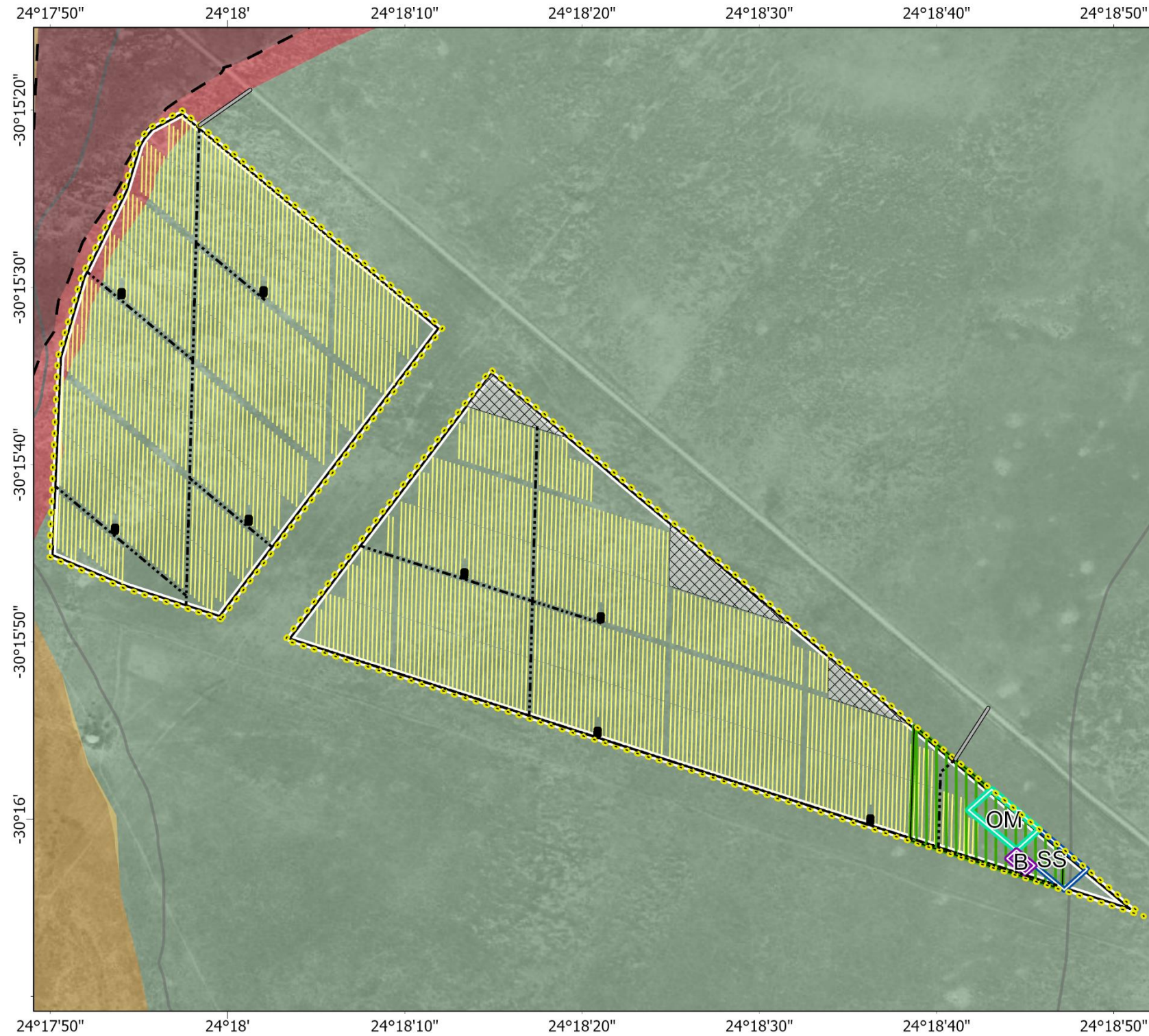
- Assessment Study Area (farm portions)
- PV 4

Coordinate system: GCS WGS 1984; Scale: 1:140,000  
 Data: Kudu PV specialist studies  
 Thematic: CSIR  
 Basemap: Earthstar Geographics, Maxar  
 Date: 21/05/2023

Project Layout Map



# Proposed Kudu Solar PV facility (4) near De Aar, Northern Cape Province South Africa



## Combined sensitivity

- Buildable area / Development footprint
- PV modules
- Inverter
- Substation
- BESS
- On-site substation complex
- O&M building
- Laydown area
- Fence
- Access road
- Internal road

## Environmental sensitivity - PV

- Very high
  - High
  - Medium
  - Low
  - Potentially sensitive features (BESS only)
- Buffer areas**
- No-go buffer



- Assessment Study Area (farm portions)
- PV 4

Coordinate system: GCS WGS 1984  
Data: Kudu PV specialist studies  
Thematic: CSIR  
Basemap: Earthstar Geographics, Maxar  
Date: 5/26/2023

Combined Project Layout and Sensitivity Map.