



APPENDIX C:

Maps



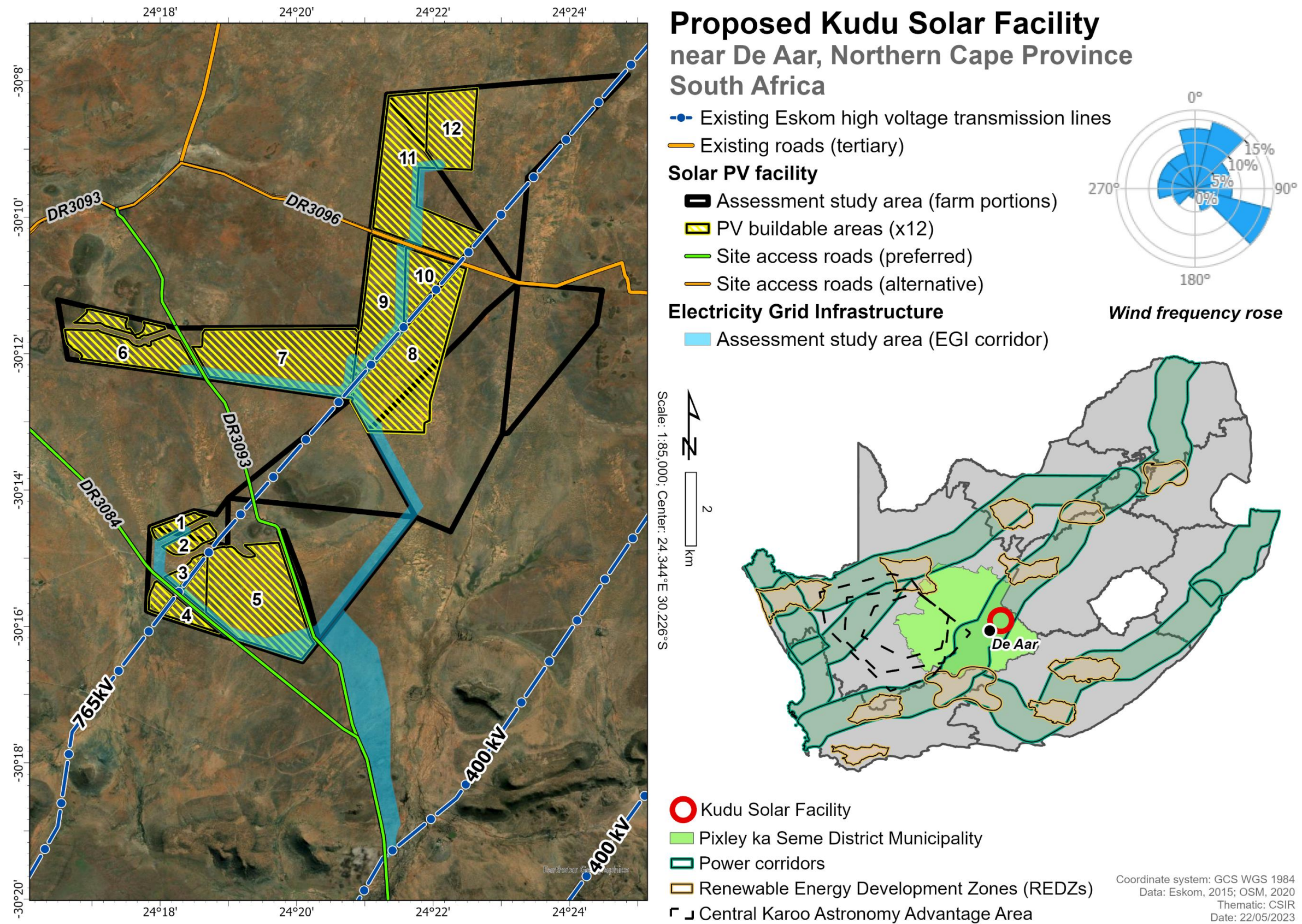
APPENDICES

ENVIRONMENTAL IMPACT ASSESSMENT REPORT: Scoping and Environmental Impact Assessment (EIA) Process for the Proposed Development of a Solar Photovoltaic (PV) Facility (Kudu Solar Facility 7) and associated infrastructure, near De Aar, Northern Cape Province



CONTENTS

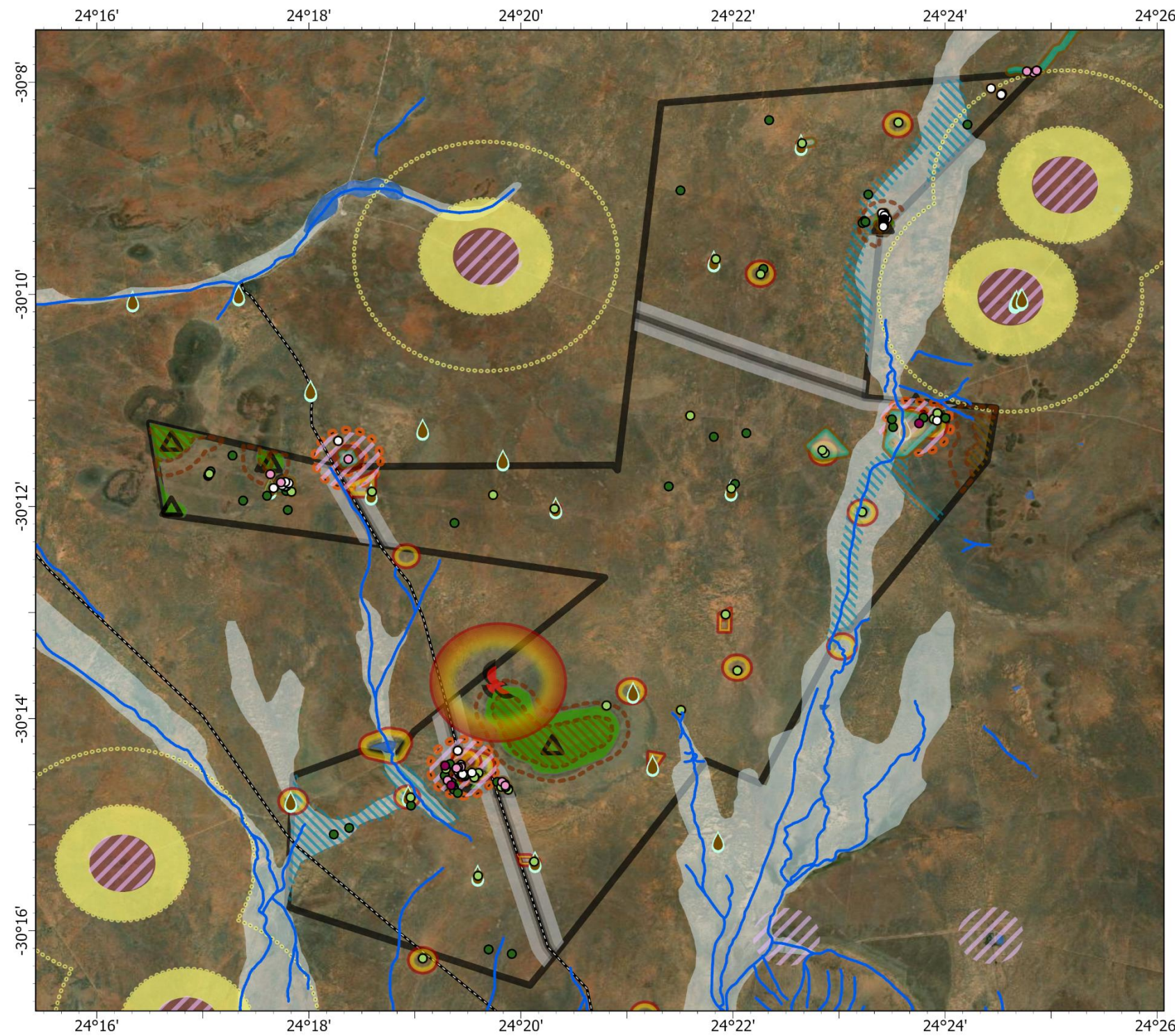
LOCALITY MAP OF THE PROPOSED KUDU PROJECTS.	3
COMBINED ENVIRONMENTAL FEATURE MAP FOR THE PROPOSED PROJECT STUDY AREA.	4
COMBINED ENVIRONMENTAL SENSITIVITY MAP FOR THE PROPOSED PROJECT STUDY AREA.	5
PROJECT LAYOUT MAP	6
COMBINED PROJECT LAYOUT AND SENSITIVITY MAP.	7



Locality Map of the Proposed Kudu Projects.

Note that the EGI Projects are not part of the current application and report. The EGI Projects will be considered separately at a later stage. The EGI corridor indicated in this Figure is indicative.

Proposed Kudu Solar PV facility (1 - 12) near De Aar, Northern Cape Province South Africa



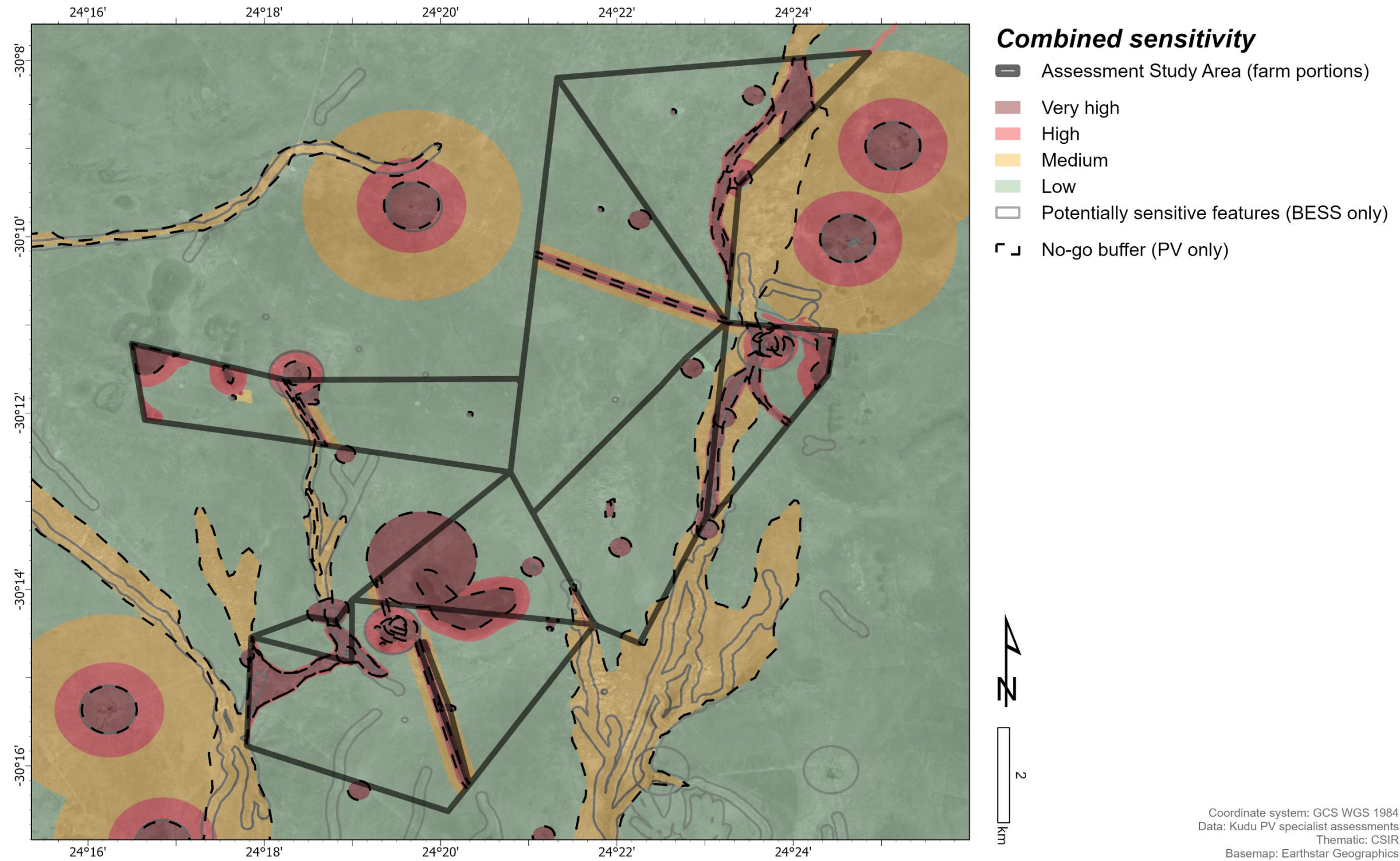
Combined environmental features

- ▣ Assessment study area
- Site access roads (preferred)
- Terrestrial ecology**
- ▲ Koppies
- Aquatic ecology**
- Watercourses (rivers, 35m; pans, 50m)
- Floodplains
- Avifauna**
- 🦅 Verreaux's eagle nest (1km)
- 📏 Waterpoint (mimimum 50 m)
- Visual and scenic resources**
- ▨ Drainage features (50m)
- ▨ Topographic features
- ▨ Topographic features (250m)
- Farmsteads (inside study area, 250m)
- Farmsteads (inside study area, 500m)
- Farmsteads (outside study area, 500m)
- Farmsteads (outside study area, 1km)
- Farmsteads (outside study area, 2km)
- Roads (50m)
- Roads (100m)
- Roads (250m)
- Safety, Health and Environment Risk**
- ▨ Farmsteads (500m, BESS only)
- Groundwater**
- 📍 Boreholes (50m, BESS only)
- Heritage features**
- Grading: IIIA
- Grading: IIIB
- Grading: GPA
- Grading: GPB
- Grading: GPC
- Heritage features (50m)

Coordinate system: GCS WGS 1984; Data: Kudu PV specialist assessments; Thematic: CSIR
Basemap: Earthstar Geographics
Date: 07/02/2023

Combined Environmental Feature Map for the proposed project study area.

Proposed Kudu Solar PV facility (1 - 12) near De Aar, Northern Cape Province South Africa



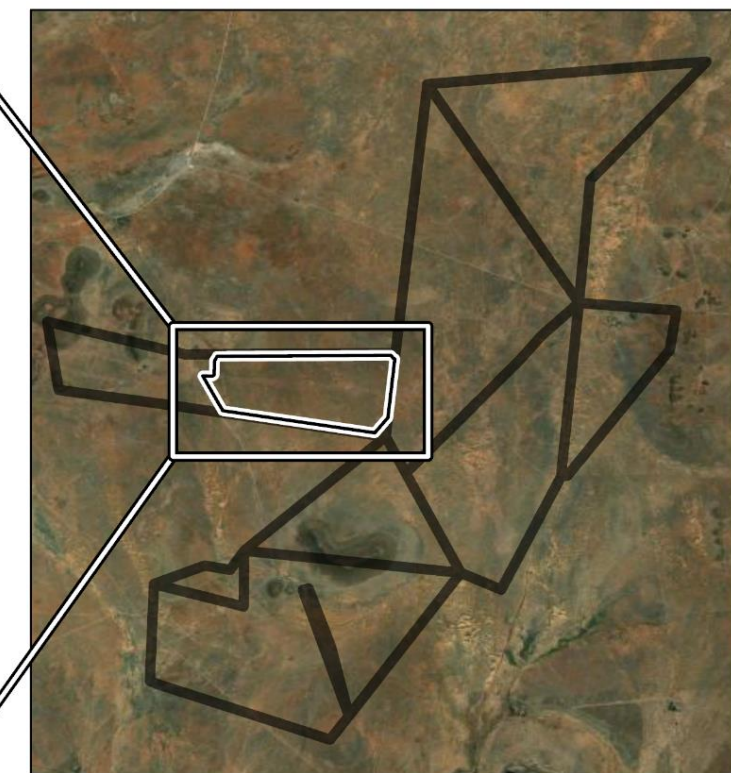
Combined Environmental Sensitivity Map for the proposed project study area.

Proposed Kudu Solar PV facility (7) near De Aar, Northern Cape Province South Africa



PV 7 layout

- Buildable area / Development footprint
- PV modules
- Inverter
- Substation
- BESS
- On-site substation complex
- O&M building
- Laydown area
- Fence
- Access road
- Internal road

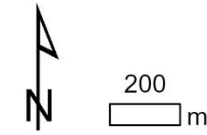
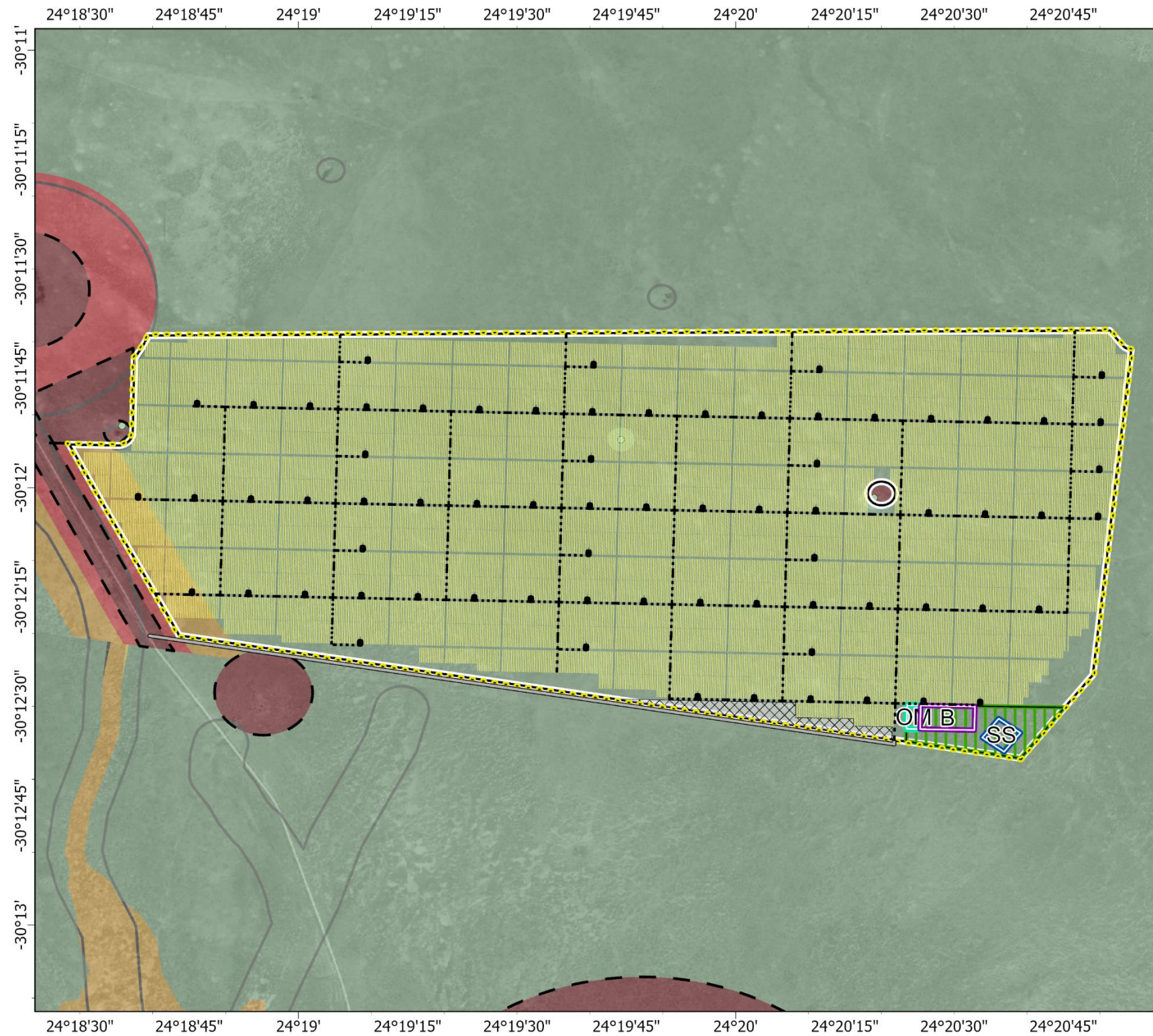


- Assessment Study Area (farm portions)
- PV 7

Coordinate system: GCS WGS 1984; Scale: 1:140,000
 Data: Kudu PV specialist studies
 Thematic: CSIR
 Basemap: Earthstar Geographics, Maxar
 Date: 21/05/2023

Project Layout Map

Proposed Kudu Solar PV facility (7) near De Aar, Northern Cape Province South Africa

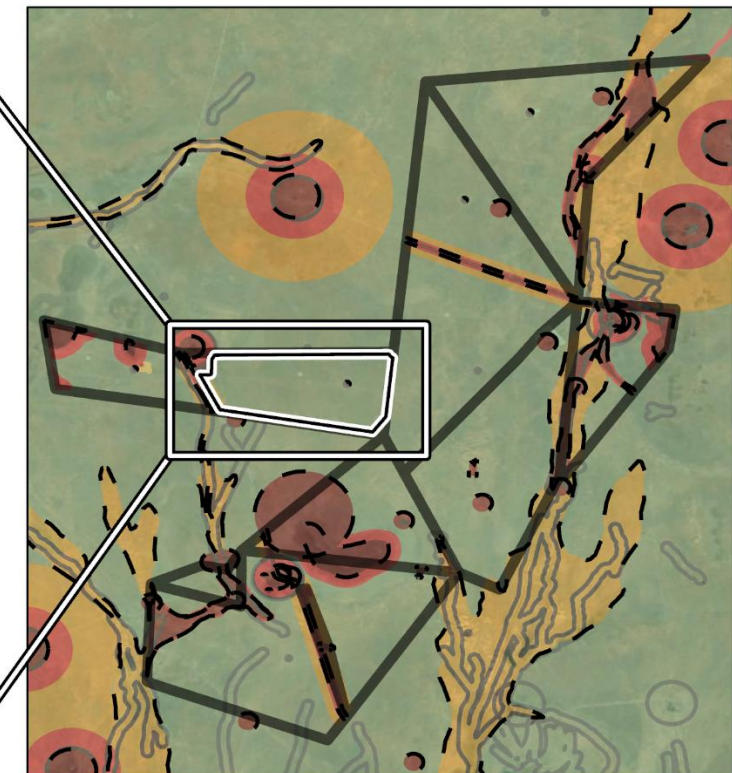


Combined sensitivity

- Buildable area / Development footprint
- PV modules
- Inverter
- Substation
- BESS
- On-site substation complex
- O&M building
- Laydown area
- Fence
- Access road
- Internal road

Environmental sensitivity - PV

- Very high
 - High
 - Medium
 - Low
 - Potentially sensitive features (BESS only)
- Buffer areas**
- No-go buffer



Assessment Study Area (farm portions)
 PV 7
 Coordinate system: GCS WGS 1984
 Data: Kudu PV specialist studies
 Thematic: CSIR
 Basemap: Earthstar Geographics, Maxar
 Date: 5/26/2023

Combined Project Layout and Sensitivity Map.