

Figure 3-7: Original layout considered in the Scoping Phase for the proposed wind energy facility (south).

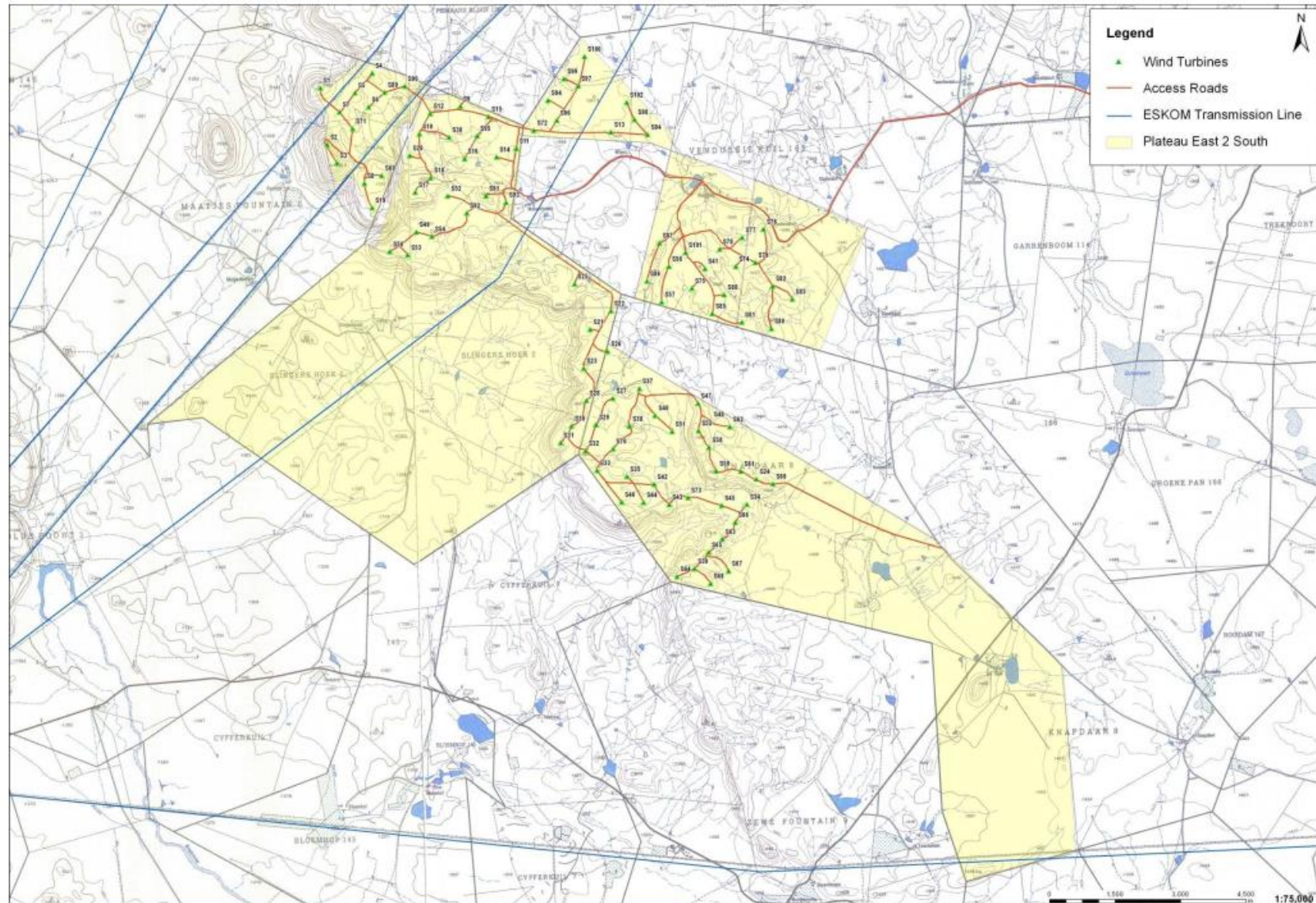


Figure 3-8: Revised layout considered in February-April 2012 for the proposed southern wind energy facility.



© Aurecon (2012) No unauthorised reproduction, copy or adaptation, in whole or in part, may be made.

Figure 4: Revised layout considered in April 2012 during the EIA process for the proposed De Aar 2 South WEF (Source: Final EIA Report dated April 2012 (Aurecon, 2012))

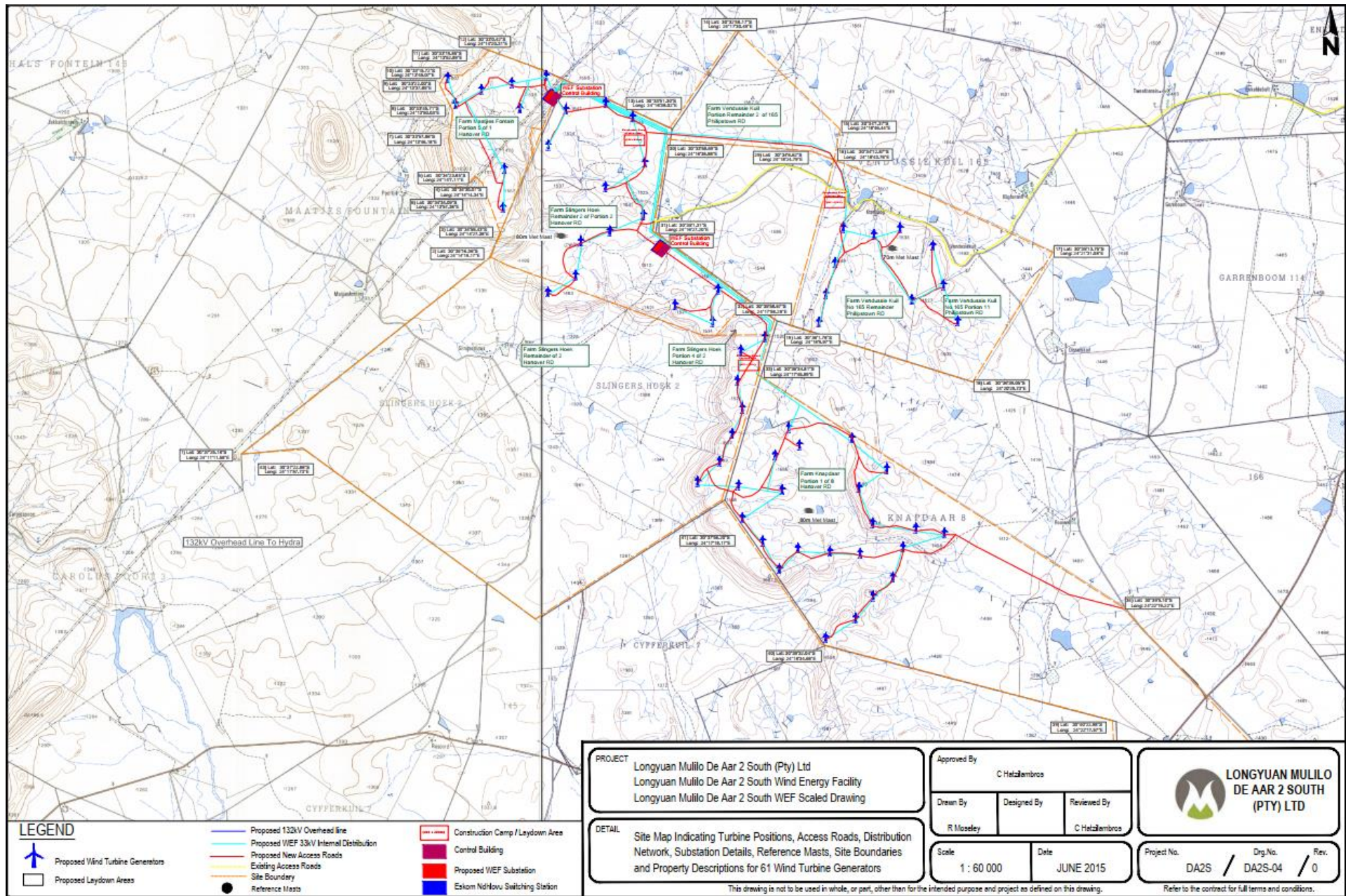


Figure 5: Layout included in the Part 2 EA amendment process in 2015.

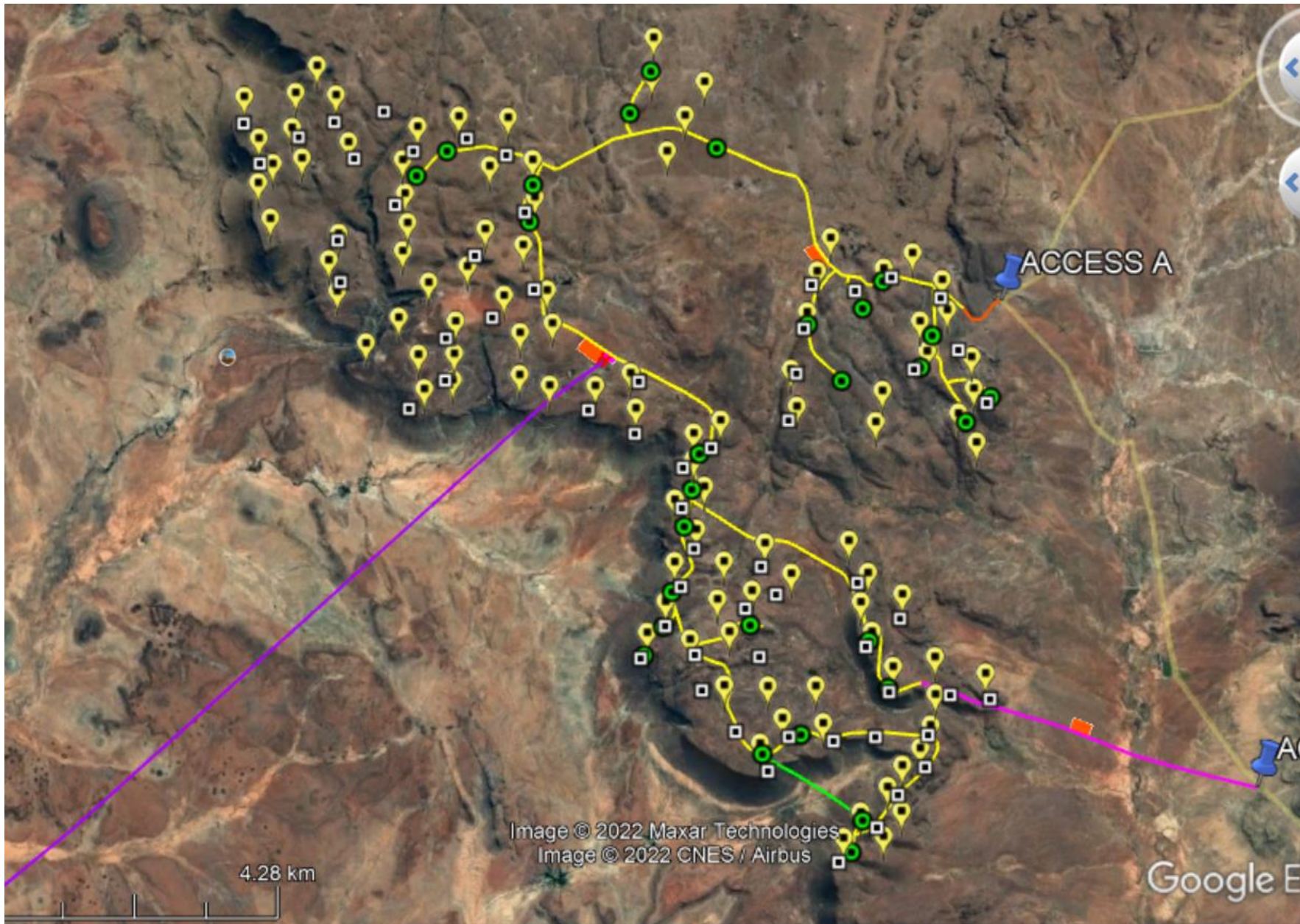


Figure 6: Latest proposed layout (green icons), set against the originally assessed 103 turbines (yellow balloons) and currently authorised 61 turbine layout (white squares).