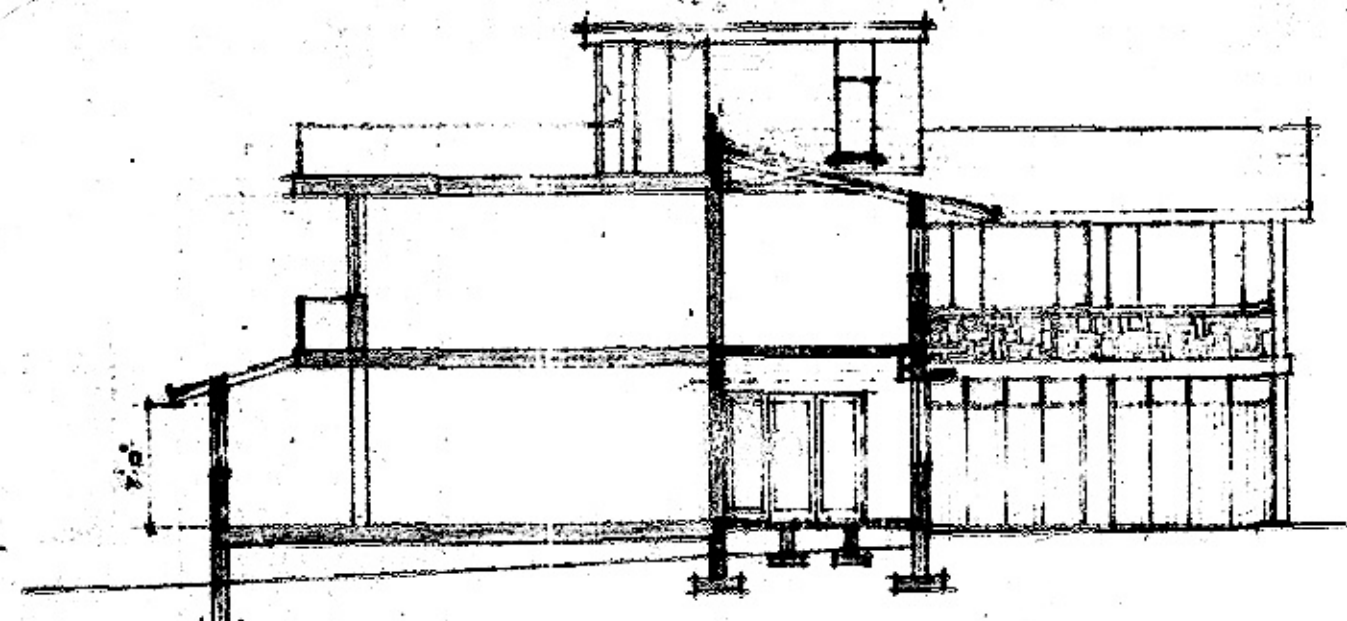
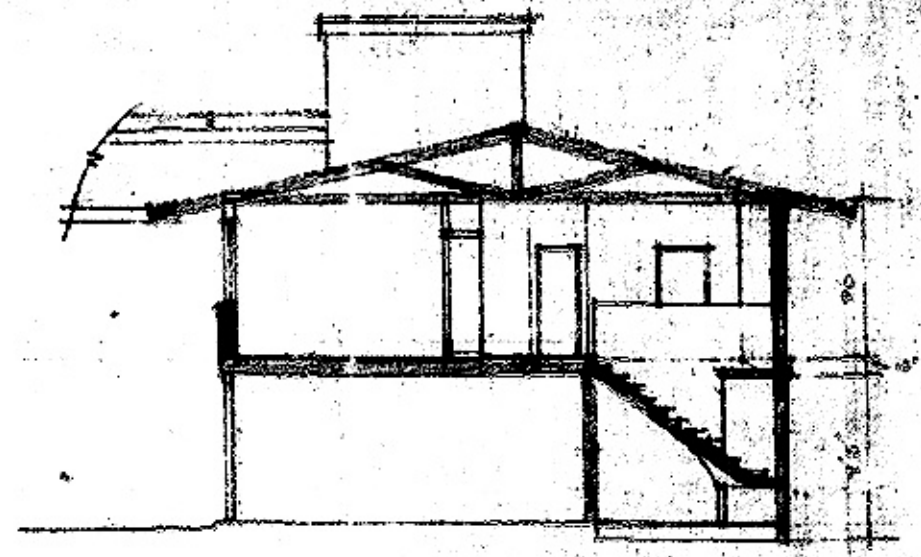


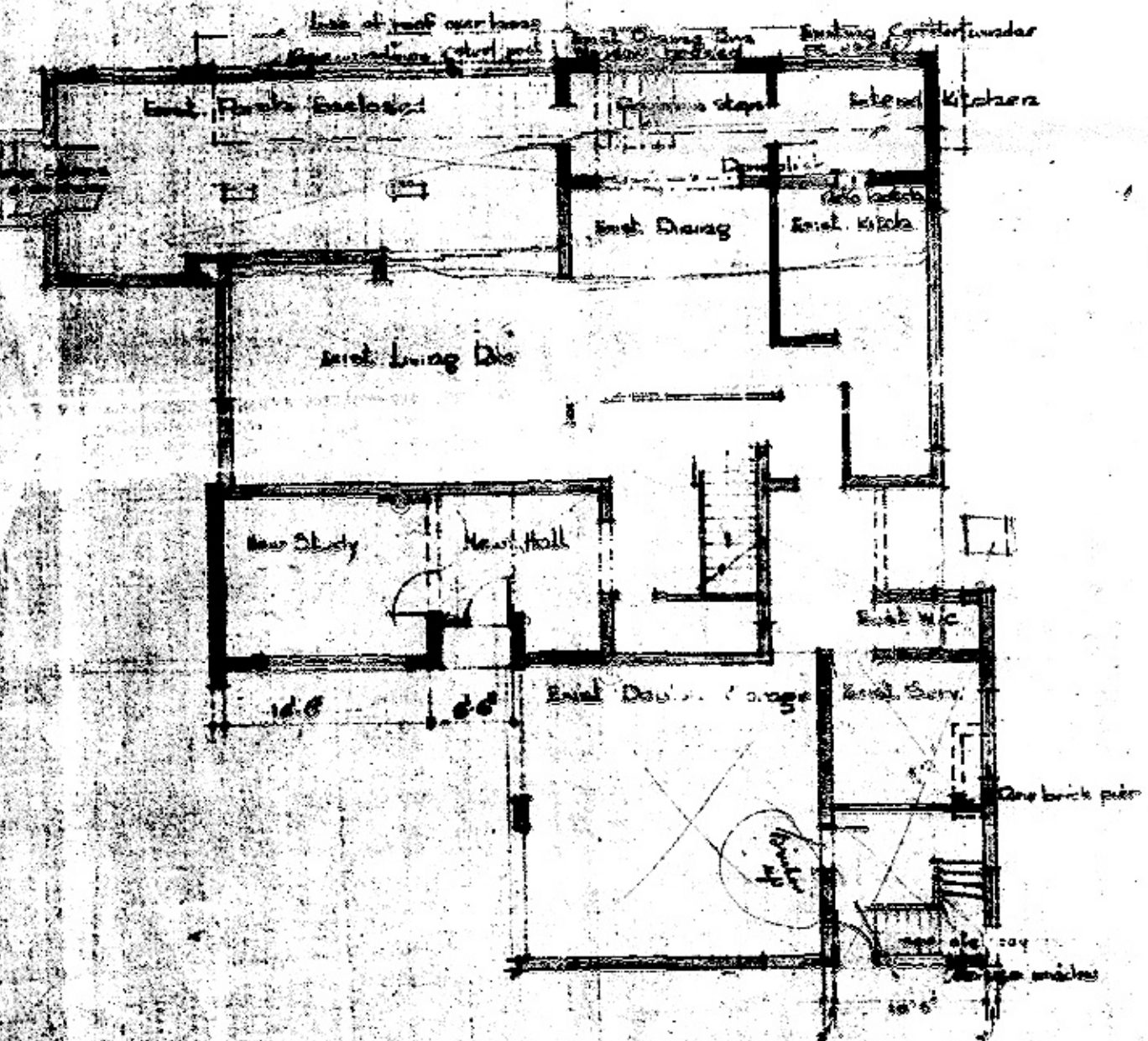
• WEST ELEVATION •



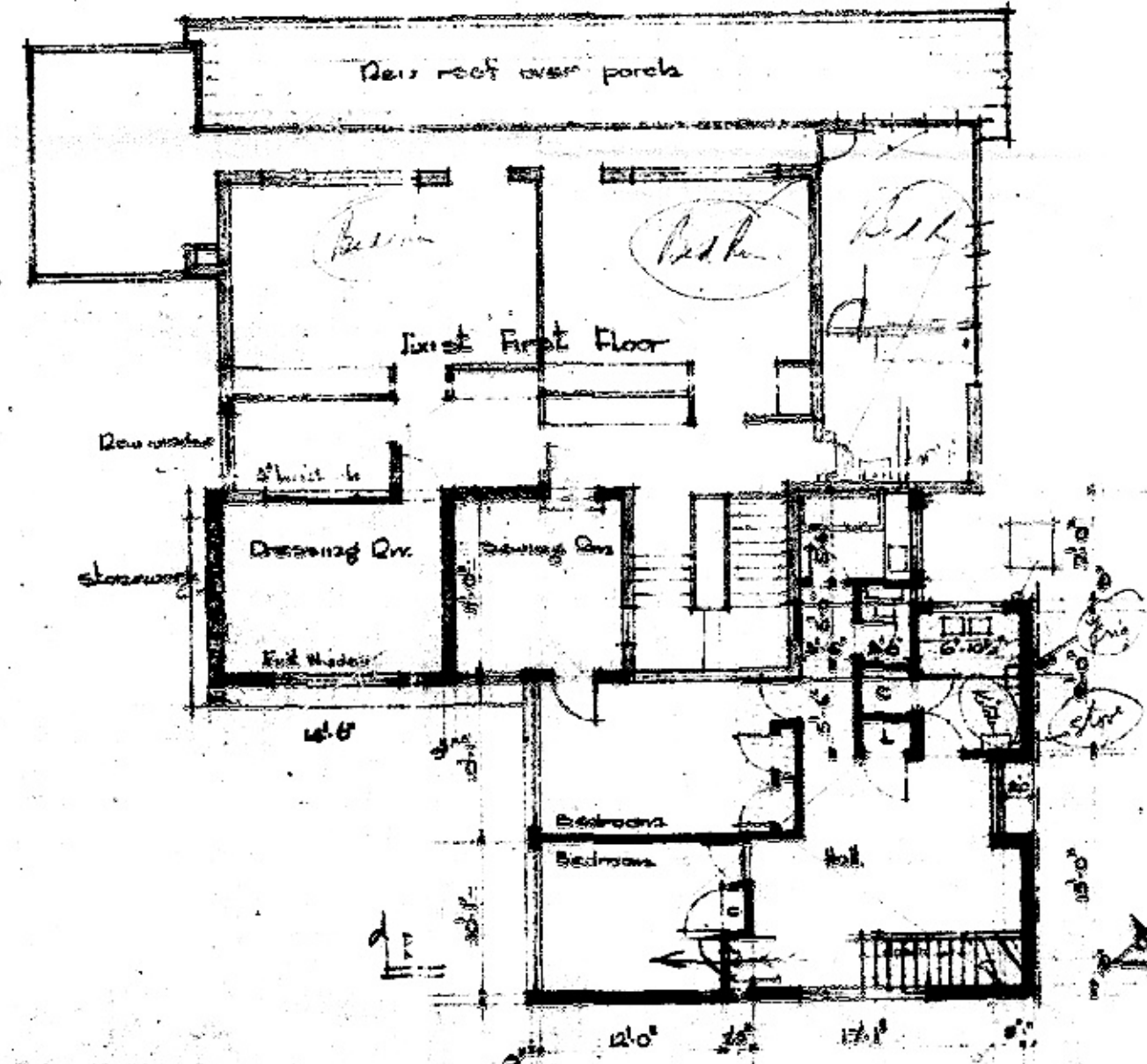
• SECTION •



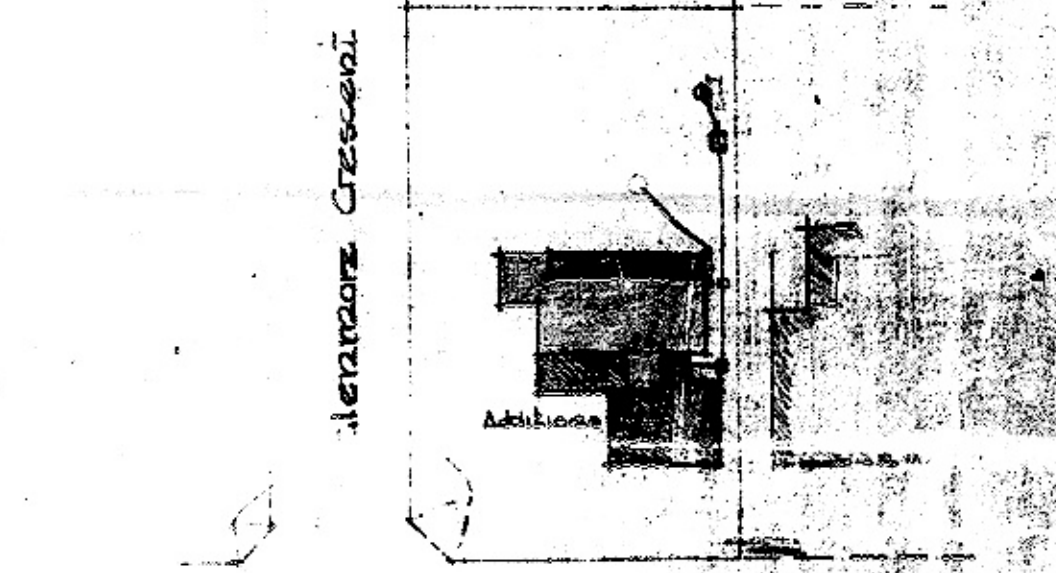
• SECTION B-B •



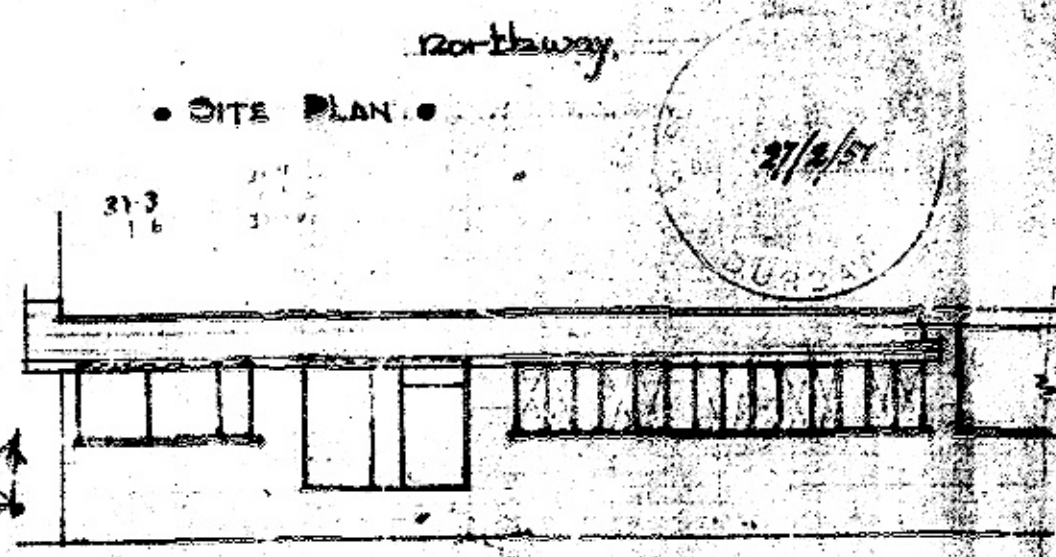
• GROUND FLOOR PLAN •



• 1st FLOOR PLAN •



• SITE PLAN •



• PART EAST ELEVATION •

ADDITIONS & ALTERATIONS AT DURBAN NORTH FOR MRS. D. KENTDIDGE - SCALE 1/8" to 1'-0" - DRC. NO 297/B
 chartered architect - in trust bldgs - gardiner street - durban - drawn by r. b. - 20th January 1951 - amended drawings