

**BON ESPIRANGE
KOMSBERG
CUMULATIVE MAP**

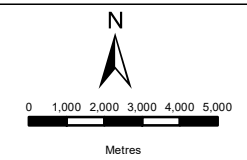
Legend

Bon Espirange to
Komsberg Powerline
Corridor

Eskom Powerlines

Project Status

- Approved
- In process
- Withdrawn/Lapsed



DISCLAIMER

The information on this figure was derived from various digital databases available to WSP Environmental (Pty) Ltd. All information is provided "as is" and it must be acknowledged that data, information, and maps are dynamic and in a constant state of maintenance, correction and update. WSP Environmental (Pty) Ltd cannot accept any responsibility for errors, omissions, or positional accuracy where it has not been directly responsible for the production of the data referenced. There are no warranties, expressed or implied, as to the use of this information, including the warranty of merchantability or fitness for a particular purpose. Notification of any errors will be appreciated.



WSP ENVIRONMENTAL (PTY) LTD
WSP HOUSE, 1 ON LANGFORD, LANGFORD ROAD, WESTVILLE 3632
P O BOX 1442, WESTVILLE 3630, RSA
Tel +27 (0)31 240 8860, Fax +27 (0)31 240 8861, wspe@wspgroup.co.za

DATA SOURCE:
Service Layer Credits: Source: Esri, Maxar, GeoEye, Earthstar
Geographics, CNES/Airbus DS, USDA, USGS, AeroGRID, IGN,
and the GIS User Community

COORDINATE SYSTEM: WGS LO21

PROJECT TITLE:

EURONOTUS CLUSTER

SCALE: 1:200,000

DRAWN BY: TS

DATE: 25/11/2021

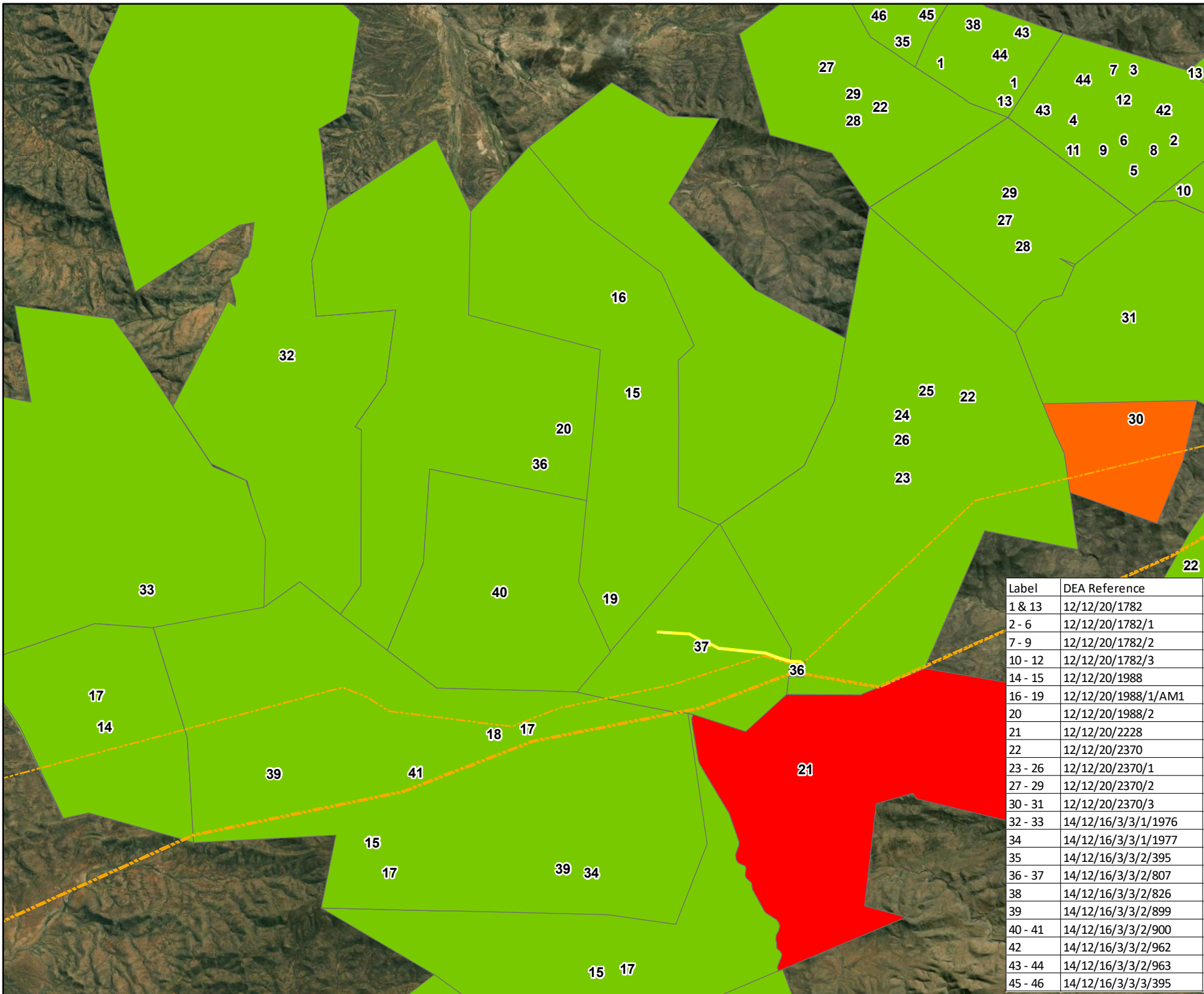
REVIEWED BY: AS

FIGURE NO:

PROJECT NO: 41103473

REV:

© COPYRIGHT RESERVED
The content of this document is privileged and confidential and may not be disclosed or reproduced without the express authorisation of the author, being "WSP Environmental (Pty) Ltd"



| Label | DEA Reference |
|---------|---------------------|
| 1 & 13 | 12/12/20/1782 |
| 2 - 6 | 12/12/20/1782/1 |
| 7 - 9 | 12/12/20/1782/2 |
| 10 - 12 | 12/12/20/1782/3 |
| 14 - 15 | 12/12/20/1988 |
| 16 - 19 | 12/12/20/1988/1/AM1 |
| 20 | 12/12/20/1988/2 |
| 21 | 12/12/20/2228 |
| 22 | 12/12/20/2370 |
| 23 - 26 | 12/12/20/2370/1 |
| 27 - 29 | 12/12/20/2370/2 |
| 30 - 31 | 12/12/20/2370/3 |
| 32 - 33 | 14/12/16/3/3/1/1976 |
| 34 | 14/12/16/3/3/1/1977 |
| 35 | 14/12/16/3/3/2/395 |
| 36 - 37 | 14/12/16/3/3/2/807 |
| 38 | 14/12/16/3/3/2/826 |
| 39 | 14/12/16/3/3/2/899 |
| 40 - 41 | 14/12/16/3/3/2/900 |
| 42 | 14/12/16/3/3/2/962 |
| 43 - 44 | 14/12/16/3/3/2/963 |
| 45 - 46 | 14/12/16/3/3/3/395 |