

**SCREENING REPORT FOR AN ENVIRONMENTAL AUTHORIZATION OR
FOR A PART TWO AMENDMENT OF AN ENVIRONMENTAL AUTHORISATION
AS REQUIRED BY THE 2014 EIA REGULATIONS – PROPOSED DEVELOPMENT
FOOTPRINT ENVIRONMENTAL SENSITIVITY**

EIA Reference number: To be allocated

Project name: Geelkop Grid

Project title: Connection infrastructure

Date screening report generated: 07/10/2020 12:30:38

Applicant: Geel Kop Grid (Pty) Ltd

Compiler: Cape EAPrac

Compiler signature:

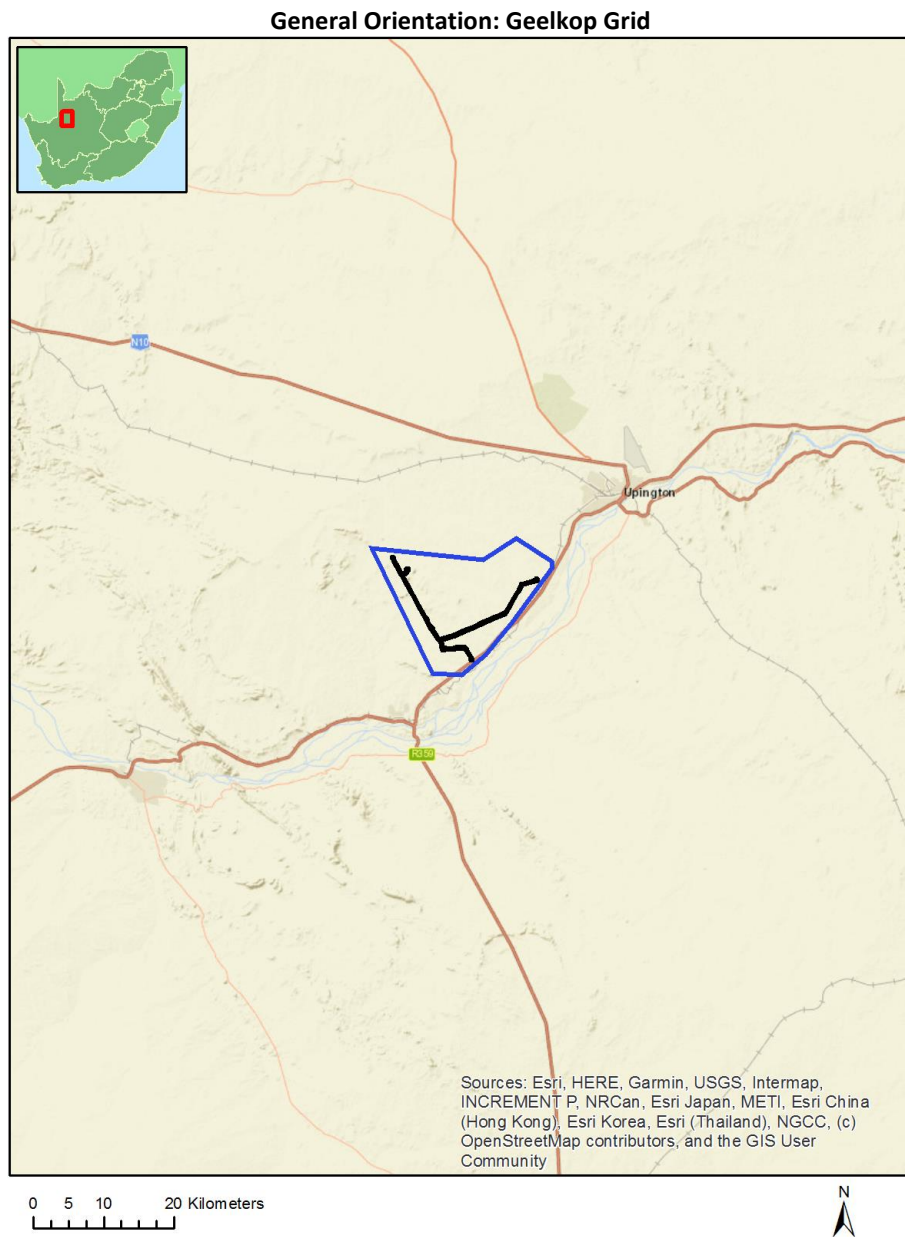
.....

Table of Contents

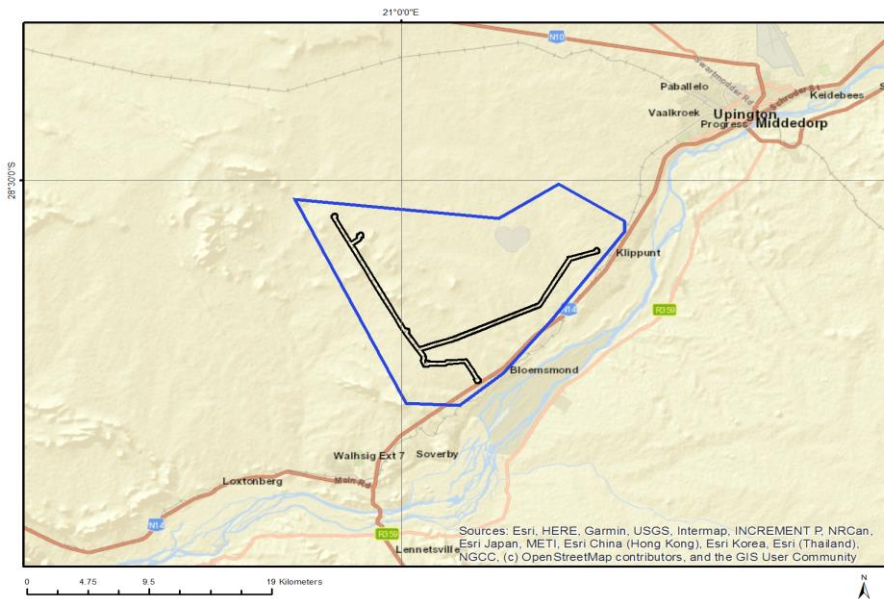
Proposed Project Location	3
Orientation map 1: General location	3
Map of proposed site and relevant area(s)	4
Cadastral details of the proposed site	4
Wind and Solar developments with an approved Environmental Authorisation or applications under consideration within 30 km of the proposed area	14
Environmental Management Frameworks relevant to the application	15
Environmental screening results and assessment outcomes	15
Relevant development incentives, restrictions, exclusions or prohibitions	15
Map indicating proposed development footprint within applicable development incentive, restriction, exclusion or prohibition zones.....	16
Proposed Development Area Environmental Sensitivity.....	17
Specialist assessments identified.....	17
Results of the environmental sensitivity of the proposed area	19
MAP OF RELATIVE AGRICULTURE THEME SENSITIVITY	19
MAP OF RELATIVE ANIMAL SPECIES THEME SENSITIVITY.....	20
MAP OF RELATIVE AQUATIC BIODIVERSITY THEME SENSITIVITY	21
MAP OF RELATIVE ARCHAEOLOGICAL AND CULTURAL HERITAGE THEME SENSITIVITY	22
MAP OF RELATIVE CIVIL AVIATION THEME SENSITIVITY	23
MAP OF RELATIVE DEFENCE THEME SENSITIVITY.....	24
MAP OF RELATIVE PALEONTOLOGY THEME SENSITIVITY	25
MAP OF RELATIVE PLANT SPECIES THEME SENSITIVITY	26
MAP OF RELATIVE TERRESTRIAL BIODIVERSITY THEME SENSITIVITY	27

Proposed Project Location

Orientation map 1: General location



Map of proposed site and relevant area(s)



Cadastral details of the proposed site

Property details:

No	Farm Name	Farm/ Erf No	Portion	Latitude	Longitude	Property Type
1	BLOESMOND	2	0	28°37'50.87S	21°4'16.76E	Erven
2	BLOESMOND	3	0	28°37'42.65S	21°4'26.08E	Erven
3	BLOESMOND	4	0	28°37'57.1S	21°4'24.08E	Erven
4	GEELKOP SETTLEMENT	32	0	28°39'8.73S	21°2'2.68E	Erven
5	GEELKOP SETTLEMENT	33	0	28°39'6.78S	21°2'5.74E	Erven
6	GEELKOP SETTLEMENT	34	0	28°39'27.68S	21°2'25.97E	Erven
7	GEELKOP SETTLEMENT	37	0	28°39'13.54S	21°2'38.75E	Erven
8	BLOESMOND SETTLEMENT	35	0	28°38'39.99S	21°3'38.09E	Erven
9	GEELKOP SETTLEMENT	36	0	28°39'16.86S	21°2'33.55E	Erven
10	GEELKOP SETTLEMENT	39	0	28°38'43.9S	21°2'42.59E	Erven
11	GEELKOP SETTLEMENT	41	0	28°39'12.44S	21°2'1.3E	Erven
12	GEELKOP SETTLEMENT	42	0	28°39'10.66S	21°2'4.09E	Erven
13	GEELKOP SETTLEMENT	37	0	28°38'55.32S	21°2'23.98E	Erven
14	BLOESMOND SETTLEMENT	40	0	28°38'16.27S	21°3'58.3E	Erven
15	GEELKOP SETTLEMENT	31	0	28°39'35.97S	21°2'16.74E	Erven
16	BLOESMOND SETTLEMENT	36	0	28°38'37.03S	21°3'47.48E	Erven
17	GEELKOP SETTLEMENT	38	0	28°39'4.69S	21°2'47.13E	Erven
18	GEELKOP SETTLEMENT	45	0	28°39'2.68S	21°2'16.2E	Erven
19	GEELKOP SETTLEMENT	49	0	28°38'44.91S	21°2'43.57E	Erven
20	GEELKOP SETTLEMENT	38	0	28°38'50.01S	21°2'32.48E	Erven
21	BLOESMOND SETTLEMENT	42	0	28°38'6.43S	21°4'3.1E	Erven
22	BLOESMOND SETTLEMENT	47	0	28°38'30.5S	21°3'57.35E	Erven
23	GEELKOP SETTLEMENT	32	0	28°39'33.66S	21°2'19.76E	Erven
24	GEELKOP SETTLEMENT	33	0	28°39'30.26S	21°2'22.44E	Erven

25	GEELKOP SETTLEMENT	44	0	28°39'6.46S	21°2'10.46E	Erven
26	BLOESMOND SETTLEMENT	48	0	28°38'10.12S	21°3'39.43E	Erven
27	BLOESMOND SETTLEMENT	34	0	28°38'7.83S	21°3'40.27E	Erven
28	GEELKOP SETTLEMENT	34	0	28°39'4.77S	21°2'8.85E	Erven
29	GEELKOP SETTLEMENT	35	0	28°39'1.06S	21°2'14.88E	Erven
30	GEELKOP SETTLEMENT	31	0	28°39'10.2S	21°2'0.1E	Erven
31	GEELKOP SETTLEMENT	35	0	28°39'22.05S	21°2'30.42E	Erven
32	GEELKOP SETTLEMENT	36	0	28°38'57.01S	21°2'21.46E	Erven
33	GEELKOP SETTLEMENT	39	0	28°38'56.15S	21°2'57.68E	Erven
34	BLOESMOND SETTLEMENT	41	0	28°38'12.96S	21°4'1.58E	Erven
35	GEELKOP SETTLEMENT	43	0	28°39'8.68S	21°2'7E	Erven
36	GEELKOP SETTLEMENT	46	0	28°38'58.71S	21°2'22.21E	Erven
37	GEELKOP SETTLEMENT	47	0	28°38'56.66S	21°2'25.13E	Erven
38	GEELKOP SETTLEMENT	48	0	28°38'51.6S	21°2'32.83E	Erven
39	BLOESMOND	150	0	28°37'44.97S	21°4'19.15E	Erven
40	OLYVENHOUTS DRIFT SETTLEMENT (Gordonia)	644	0	28°31'21.68S	21°9'13.29E	Erven
41	OLYVENHOUTS DRIFT SETTLEMENT (Gordonia)	1080	0	28°29'12.04S	21°5'24.69E	Erven
42	OLYVENHOUTS DRIFT SETTLEMENT (Gordonia)	1321	0	28°32'12.49S	21°9'25.45E	Erven
43	DYASON'S KLIP	454	0	28°33'23.93S	21°2'48.44E	Farm
44	MC TAGGART'S CAMP	453	0	28°31'20.25S	21°3'35.91E	Farm
45	ROOIPUNT	617	0	28°28'54.67S	21°1'23.27E	Farm
46		444	0	28°30'18.67S	20°57'3.65E	Farm
47	BLOEMS MOND	455	0	28°34'0.44S	21°1'16.03E	Farm
48	GEELKOP	456	0	28°34'59.55S	21°0'6.12E	Farm
49	KLIP PUNT	452	0	28°30'33.28S	21°4'15.58E	Farm
50	TUNGSTEN LODGE	638	0	28°33'48.72S	21°6'7.52E	Farm
51	ZOOVOORBY	458	0	28°35'54.88S	20°57'12.09E	Farm
52	MC TAGGARTS CAMP SUID	636	0	28°35'1.76S	21°7'23.23E	Farm
53	MC TAGGART'S CAMP	453	0	28°36'17.36S	21°7'40.39E	Farm
54	CURRIE'S CAMP	457	0	28°35'5.7S	20°58'27.32E	Farm
55	BLOESMOND-WES	623	0	28°37'57.82S	21°3'24.12E	Farm
56	BLOCUSO	644	0	28°40'15.19S	21°0'46.47E	Farm
57	THE	670	0	28°27'56.47S	20°55'1.01E	Farm
58	MC TAGGART'S CAMP	453	43	28°35'27.23S	21°6'28.26E	Farm Portion
59	BLOEMS MOND	455	25	28°37'23.57S	21°4'16.33E	Farm Portion
60	BLOEMS MOND	455	15	28°37'19.97S	21°4'36.47E	Farm Portion
61	BLOEMS MOND	455	18	28°37'50.1S	21°4'21.58E	Farm Portion
62	BLOEMS MOND	455	11	28°37'52.32S	21°4'22.68E	Farm Portion
63	BLOESMOND-WES	623	1	28°37'54.86S	21°4'4.01E	Farm Portion
64	MC TAGGARTS CAMP SUID	636	0	28°34'45.34S	21°7'13.31E	Farm Portion
65	KLIP PUNT	452	12	28°30'40.72S	21°4'27.02E	Farm Portion
66	BLOEMS MOND	455	3	28°37'46.86S	21°4'29.27E	Farm Portion
67	BLOEMS MOND	455	27	28°37'35.97S	21°4'29.54E	Farm Portion
68	DYASON'S KLIP	454	0	28°37'1.55S	21°5'39.2E	Farm Portion
69	BLOEMS MOND	455	24	28°37'36.94S	21°4'34.91E	Farm Portion
70	BLOEMS MOND	455	25	28°37'44.25S	21°4'58.97E	Farm Portion
71	GEELKOP	456	0	28°35'1.67S	21°0'7.37E	Farm Portion
72	BLOESMOND-WES	623	0	28°38'14.94S	21°4'19.04E	Farm Portion
73		444	0	28°30'18.83S	20°57'5.52E	Farm Portion
74	DYASON'S KLIP	454	11	28°36'43.28S	21°5'19.08E	Farm Portion
75	GEELKOP	456	4	28°38'37.66S	21°2'55.14E	Farm Portion
76	ROOIPUNT	617	0	28°28'54.39S	21°1'26.48E	Farm Portion

77		628	0	28°33'44.65S	21°6'8.39E	Farm Portion
78	DYASON'S KLIP	454	0	28°33'19.7S	21°2'50.91E	Farm Portion
79	BLOEMS MOND	455	28	28°37'24.86S	21°4'39.18E	Farm Portion
80	ZOOVOORBY	458	2	28°35'53.73S	20°57'14.96E	Farm Portion
81	BLOCUSO	644	0	28°40'54.75S	21°1'14.45E	Farm Portion
82	BLOCUSO	644	0	28°39'26.95S	21°0'1.78E	Farm Portion
83	BLOEMS MOND	455	5	28°34'1.15S	21°0'45.33E	Farm Portion
84	BLOEMS MOND	455	14	28°33'23.71S	21°1'19.6E	Farm Portion
85	CURRIE'S CAMP	457	1	28°34'44.59S	20°58'23.48E	Farm Portion
86	BLOCUSO	644	1	28°40'41.46S	20°59'51.75E	Farm Portion
87	MC TAGGART'S CAMP	453	3	28°31'22.18S	21°3'32.35E	Farm Portion
88	GEELKOP	456	0	28°38'50.29S	21°3'11.9E	Farm Portion
89	BLOEMSMOND-WES	623	0	28°37'53.19S	21°3'32.92E	Farm Portion
90	THE	670	0	28°27'56.69S	20°55'4.96E	Farm Portion

Development footprint¹ vertices:

Footprint	Latitude	Longitude
1	28°31'34.08S	20°57'19.04E
1	28°31'50.51S	20°57'29.39E
1	28°32'31.26S	20°57'55.03E
1	28°32'22.28S	20°58'9.51E
1	28°32'16.29S	20°58'9.75E
1	28°32'15.16S	20°58'10.26E
1	28°32'14.14S	20°58'11.13E
1	28°32'13.35S	20°58'12.42E
1	28°32'12.99S	20°58'13.38E
1	28°32'12.01S	20°58'14.15E
1	28°32'10.9S	20°58'15.63E
1	28°32'10.17S	20°58'16.98E
1	28°32'10S	20°58'18.73E
1	28°32'10.26S	20°58'20.99E
1	28°32'10.52S	20°58'22.96E
1	28°32'11.36S	20°58'24.01E
1	28°32'13.31S	20°58'25.45E
1	28°32'15.08S	20°58'25.76E
1	28°32'16.64S	20°58'25.84E
1	28°32'18.84S	20°58'25.75E
1	28°32'19.74S	20°58'25.59E
1	28°32'21.04S	20°58'24.86E
1	28°32'21.71S	20°58'24.1E
1	28°32'22.22S	20°58'23.27E
1	28°32'22.44S	20°58'22.79E
1	28°32'22.79S	20°58'21.93E
1	28°32'23.04S	20°58'21.04E
1	28°32'23.04S	20°58'20.6E
1	28°32'24.55S	20°58'20.55E
1	28°32'25.84S	20°58'20.42E
1	28°32'26.85S	20°58'20.15E
1	28°32'28.15S	20°58'19.22E
1	28°32'31.21S	20°58'14.61E
1	28°32'32.84S	20°58'12.19E
1	28°32'40.02S	20°58'0.41E

¹ "development footprint", means the area within the site on which the development will take place and includes all ancillary developments for example roads, power lines, boundary walls, paving etc. which require vegetation clearance or which will be disturbed and for which the application has been submitted.

1	28°32'44.23S	20°58'3.13E
1	28°32'48.59S	20°58'5.86E
1	28°33'9.97S	20°58'19.26E
1	28°34'37.54S	20°59'14.3E
1	28°35'19.82S	20°59'40.83E
1	28°35'34.28S	20°59'49.93E
1	28°35'42.99S	20°59'55.52E
1	28°35'53.98S	21°0'2.27E
1	28°36'8.17S	21°0'11.25E
1	28°36'8.23S	21°0'15.77E
1	28°36'8.39S	21°0'17.36E
1	28°36'9.1S	21°0'18.98E
1	28°36'10.19S	21°0'20.25E
1	28°36'11.68S	21°0'21.05E
1	28°36'13.91S	21°0'21.12E
1	28°36'15.44S	21°0'21.29E
1	28°36'16.71S	21°0'20.98E
1	28°36'17.22S	21°0'20.92E
1	28°36'19.43S	21°0'18.92E
1	28°36'31.83S	21°0'29.12E
1	28°36'53.43S	21°0'45.66E
1	28°36'49.06S	21°1'0.77E
1	28°36'45.05S	21°1'15.25E
1	28°36'41.26S	21°1'28.06E
1	28°36'37.38S	21°1'41.66E
1	28°36'34.33S	21°1'52.48E
1	28°36'26.41S	21°2'15.96E
1	28°36'20.57S	21°2'31.24E
1	28°36'11.74S	21°2'53.75E
1	28°36'2.78S	21°3'17.05E
1	28°35'53.23S	21°3'41.37E
1	28°35'43.58S	21°4'6.48E
1	28°35'37.42S	21°4'22.38E
1	28°35'22.2S	21°5'1.72E
1	28°35'10.78S	21°5'31.12E
1	28°35'5.99S	21°5'43.73E
1	28°34'58.18S	21°5'49E
1	28°34'41.79S	21°5'59.77E
1	28°34'28.11S	21°6'8.75E
1	28°33'50.61S	21°6'33.58E
1	28°33'31.82S	21°6'45.86E
1	28°33'12.01S	21°6'59.03E
1	28°33'11.49S	21°6'59.35E
1	28°33'10.94S	21°6'59.92E
1	28°33'10.52S	21°7'0.5E
1	28°33'10.24S	21°7'1.35E
1	28°33'9.8S	21°7'1.92E
1	28°33'9.51S	21°7'3.3E
1	28°33'4.45S	21°7'22.49E
1	28°32'57.12S	21°7'50.92E
1	28°32'53.18S	21°8'6.21E
1	28°32'51.89S	21°8'6.26E
1	28°32'51.04S	21°8'6.62E
1	28°32'50.25S	21°8'7.24E
1	28°32'49.16S	21°8'8.18E
1	28°32'48.36S	21°8'9.48E
1	28°32'47.91S	21°8'10.98E
1	28°32'48.01S	21°8'12.72E
1	28°32'48.57S	21°8'14.64E
1	28°32'49.59S	21°8'15.87E

1	28°32'50.81S	21°8'17.35E
1	28°32'52.32S	21°8'18.44E
1	28°32'53.99S	21°8'19.01E
1	28°32'56.59S	21°8'18.9E
1	28°32'58.62S	21°8'18.43E
1	28°32'59.96S	21°8'17.21E
1	28°33'0.51S	21°8'16.22E
1	28°33'1.16S	21°8'14.67E
1	28°33'7.83S	21°7'48.86E
1	28°33'18.05S	21°7'9.18E
1	28°33'18.47S	21°7'7.52E
1	28°33'34.48S	21°6'56.98E
1	28°33'51.98S	21°6'45.35E
1	28°34'14.37S	21°6'30.58E
1	28°34'38.5S	21°6'14.6E
1	28°35'7.08S	21°5'55.86E
1	28°35'12.01S	21°5'52.58E
1	28°35'13.35S	21°5'51.43E
1	28°35'14.31S	21°5'49.76E
1	28°35'21.21S	21°5'31.92E
1	28°35'33.94S	21°4'58.86E
1	28°35'46.5S	21°4'26.56E
1	28°36'1.34S	21°3'48.1E
1	28°36'9.64S	21°3'26.86E
1	28°36'23.83S	21°2'49.97E
1	28°36'36.25S	21°2'18.06E
1	28°36'40.36S	21°2'6.62E
1	28°36'43.29S	21°1'56.73E
1	28°36'47.01S	21°1'43.68E
1	28°37'1.77S	21°0'52.97E
1	28°37'2.61S	21°0'52.56E
1	28°37'14.05S	21°1'1.07E
1	28°37'15.81S	21°1'1.81E
1	28°37'17.56S	21°1'2.64E
1	28°37'18.9S	21°1'3.23E
1	28°37'19.81S	21°1'3.34E
1	28°37'20.89S	21°1'3.38E
1	28°37'23.23S	21°1'2.66E
1	28°37'24.88S	21°1'2.08E
1	28°37'27.59S	21°1'1.21E
1	28°37'28.7S	21°1'1.9E
1	28°37'28.29S	21°1'2.77E
1	28°37'28.08S	21°1'4.15E
1	28°37'27.92S	21°1'5.62E
1	28°37'27.99S	21°1'7.17E
1	28°37'28.06S	21°1'8.5E
1	28°37'28.32S	21°1'9.43E
1	28°37'28.69S	21°1'10.19E
1	28°37'29.27S	21°1'11.13E
1	28°37'30.39S	21°1'12.17E
1	28°37'30.43S	21°1'48.1E
1	28°37'28.52S	21°1'50.3E
1	28°37'27.56S	21°1'51.72E
1	28°37'27.01S	21°1'53.54E
1	28°37'26.26S	21°2'3.07E
1	28°37'23.28S	21°2'41.49E
1	28°37'23.37S	21°2'42.59E
1	28°37'23.92S	21°2'44.21E
1	28°37'24.77S	21°2'45.34E
1	28°37'26.51S	21°2'46.57E

1	28°37'31.86S	21°2'50.45E
1	28°37'40.46S	21°2'56.08E
1	28°37'48.14S	21°3'1.46E
1	28°38'3.91S	21°3'12.31E
1	28°38'14.87S	21°3'19.86E
1	28°38'16.48S	21°3'20.68E
1	28°38'17.91S	21°3'20.59E
1	28°38'19.37S	21°3'20.27E
1	28°38'20.67S	21°3'19.32E
1	28°38'21.66S	21°3'18.04E
1	28°38'22.16S	21°3'16.21E
1	28°38'22.27S	21°3'15.6E
1	28°38'23.12S	21°3'13.89E
1	28°38'23.34S	21°3'12.48E
1	28°38'23.26S	21°3'11.02E
1	28°38'22.77S	21°3'9.45E
1	28°38'21.7S	21°3'8.09E
1	28°38'16.75S	21°3'4.29E
1	28°38'15.15S	21°3'3.64E
1	28°38'14.04S	21°3'3.62E
1	28°38'12.88S	21°3'3.74E
1	28°38'11.58S	21°3'4.63E
1	28°37'51.95S	21°2'51.28E
1	28°37'33.26S	21°2'38.42E
1	28°37'36.55S	21°1'56.83E
1	28°37'37.48S	21°1'55.76E
1	28°37'38.31S	21°1'55.05E
1	28°37'38.93S	21°1'53.94E
1	28°37'39.68S	21°1'52.82E
1	28°37'40.14S	21°1'51.51E
1	28°37'40.19S	21°1'49.51E
1	28°37'40.11S	21°1'47.62E
1	28°37'40.22S	21°1'31.15E
1	28°37'40.18S	21°1'12.26E
1	28°37'40.96S	21°1'11.4E
1	28°37'41.84S	21°1'10.15E
1	28°37'42.2S	21°1'9.26E
1	28°37'42.94S	21°1'7.26E
1	28°37'43.09S	21°1'5.26E
1	28°37'43.09S	21°1'3.6E
1	28°37'43.06S	21°1'0.01E
1	28°37'42.41S	21°0'58.65E
1	28°37'41.43S	21°0'57.41E
1	28°37'40.1S	21°0'56.37E
1	28°37'32.01S	21°0'51.32E
1	28°37'28.9S	21°0'49.86E
1	28°37'26.68S	21°0'49.96E
1	28°37'24.97S	21°0'50.52E
1	28°37'20.45S	21°0'51.94E
1	28°37'18.73S	21°0'51.26E
1	28°37'3.82S	21°0'40.4E
1	28°36'46.79S	21°0'27.31E
1	28°36'27.57S	21°0'11.99E
1	28°36'17.98S	21°0'5.37E
1	28°36'15.44S	21°0'3.21E
1	28°36'4.52S	20°59'56.33E
1	28°35'52.56S	20°59'48.74E
1	28°35'39.03S	20°59'40.38E
1	28°34'56.4S	20°59'13.5E
1	28°34'7.65S	20°58'42.83E

1	28°33'47.8S	20°58'30.48E
1	28°33'20.89S	20°58'13.44E
1	28°33'7.57S	20°58'5.23E
1	28°32'55.9S	20°57'57.76E
1	28°32'44.05S	20°57'50.35E
1	28°32'30.33S	20°57'41.82E
1	28°32'10.07S	20°57'29.06E
1	28°31'56.21S	20°57'20.25E
1	28°31'41.99S	20°57'11.5E
1	28°31'32.84S	20°57'5.82E
1	28°31'29.8S	20°57'5.2E
1	28°31'27.93S	20°57'6.02E
1	28°31'26.71S	20°57'7.18E
1	28°31'26.26S	20°57'7.7E
1	28°31'24.58S	20°57'8.68E
1	28°31'23.62S	20°57'10.32E
1	28°31'22.81S	20°57'13.31E
1	28°31'22.98S	20°57'16.56E
1	28°31'24.3S	20°57'18.8E
1	28°31'26.43S	20°57'20.34E
1	28°31'29.31S	20°57'20.27E
1	28°31'31.26S	20°57'20.25E
1	28°31'32.62S	20°57'19.91E
1	28°31'34.08S	20°57'19.04E
2	28°31'34.08S	20°57'19.04E
2	28°31'50.51S	20°57'29.39E
2	28°32'31.26S	20°57'55.03E
2	28°32'22.28S	20°58'9.51E
2	28°32'16.29S	20°58'9.75E
2	28°32'15.16S	20°58'10.26E
2	28°32'14.14S	20°58'11.13E
2	28°32'13.35S	20°58'12.42E
2	28°32'12.99S	20°58'13.38E
2	28°32'12.01S	20°58'14.15E
2	28°32'10.9S	20°58'15.63E
2	28°32'10.17S	20°58'16.98E
2	28°32'10S	20°58'18.73E
2	28°32'10.26S	20°58'20.99E
2	28°32'10.52S	20°58'22.96E
2	28°32'11.36S	20°58'24.01E
2	28°32'13.31S	20°58'25.45E
2	28°32'15.08S	20°58'25.76E
2	28°32'16.64S	20°58'25.84E
2	28°32'18.84S	20°58'25.75E
2	28°32'19.74S	20°58'25.59E
2	28°32'21.04S	20°58'24.86E
2	28°32'21.71S	20°58'24.1E
2	28°32'22.22S	20°58'23.27E
2	28°32'22.44S	20°58'22.79E
2	28°32'22.79S	20°58'21.93E
2	28°32'23.04S	20°58'21.04E
2	28°32'23.04S	20°58'20.6E
2	28°32'24.55S	20°58'20.55E
2	28°32'25.84S	20°58'20.42E
2	28°32'26.85S	20°58'20.15E
2	28°32'28.15S	20°58'19.22E
2	28°32'31.21S	20°58'14.61E
2	28°32'32.84S	20°58'12.19E
2	28°32'40.02S	20°58'0.41E
2	28°32'44.23S	20°58'3.13E

2	28°32'48.59S	20°58'5.86E
2	28°33'9.97S	20°58'19.26E
2	28°34'37.54S	20°59'14.3E
2	28°35'19.82S	20°59'40.83E
2	28°35'34.28S	20°59'49.93E
2	28°35'42.99S	20°59'55.52E
2	28°35'53.98S	21°0'2.27E
2	28°36'8.17S	21°0'11.25E
2	28°36'8.23S	21°0'15.77E
2	28°36'8.39S	21°0'17.36E
2	28°36'9.1S	21°0'18.98E
2	28°36'10.19S	21°0'20.25E
2	28°36'11.68S	21°0'21.05E
2	28°36'13.91S	21°0'21.12E
2	28°36'15.44S	21°0'21.29E
2	28°36'16.71S	21°0'20.98E
2	28°36'17.22S	21°0'20.92E
2	28°36'19.43S	21°0'18.92E
2	28°36'31.83S	21°0'29.12E
2	28°36'53.43S	21°0'45.66E
2	28°36'49.06S	21°1'0.77E
2	28°36'45.05S	21°1'15.25E
2	28°36'41.26S	21°1'28.06E
2	28°36'37.38S	21°1'41.66E
2	28°36'34.33S	21°1'52.48E
2	28°36'26.41S	21°2'15.96E
2	28°36'20.57S	21°2'31.24E
2	28°36'11.74S	21°2'53.75E
2	28°36'2.78S	21°3'17.05E
2	28°35'53.23S	21°3'41.37E
2	28°35'43.58S	21°4'6.48E
2	28°35'37.42S	21°4'22.38E
2	28°35'22.2S	21°5'1.72E
2	28°35'10.78S	21°5'31.12E
2	28°35'5.99S	21°5'43.73E
2	28°34'58.18S	21°5'49E
2	28°34'41.79S	21°5'59.77E
2	28°34'28.11S	21°6'8.75E
2	28°33'50.61S	21°6'33.58E
2	28°33'31.82S	21°6'45.86E
2	28°33'12.01S	21°6'59.03E
2	28°33'11.49S	21°6'59.35E
2	28°33'10.94S	21°6'59.92E
2	28°33'10.52S	21°7'0.5E
2	28°33'10.24S	21°7'1.35E
2	28°33'9.8S	21°7'1.92E
2	28°33'9.51S	21°7'3.3E
2	28°33'4.45S	21°7'22.49E
2	28°32'57.12S	21°7'50.92E
2	28°32'53.18S	21°8'6.21E
2	28°32'51.89S	21°8'6.26E
2	28°32'51.04S	21°8'6.62E
2	28°32'50.25S	21°8'7.24E
2	28°32'49.16S	21°8'8.18E
2	28°32'48.36S	21°8'9.48E
2	28°32'47.91S	21°8'10.98E
2	28°32'48.01S	21°8'12.72E
2	28°32'48.57S	21°8'14.64E
2	28°32'49.59S	21°8'15.87E
2	28°32'50.81S	21°8'17.35E

2	28°32'52.32S	21°8'18.44E
2	28°32'53.99S	21°8'19.01E
2	28°32'56.59S	21°8'18.9E
2	28°32'58.62S	21°8'18.43E
2	28°32'59.96S	21°8'17.21E
2	28°33'0.51S	21°8'16.22E
2	28°33'1.16S	21°8'14.67E
2	28°33'7.83S	21°7'48.86E
2	28°33'18.05S	21°7'9.18E
2	28°33'18.47S	21°7'7.52E
2	28°33'34.48S	21°6'56.98E
2	28°33'51.98S	21°6'45.35E
2	28°34'14.37S	21°6'30.58E
2	28°34'38.5S	21°6'14.6E
2	28°35'7.08S	21°5'55.86E
2	28°35'12.01S	21°5'52.58E
2	28°35'13.35S	21°5'51.43E
2	28°35'14.31S	21°5'49.76E
2	28°35'21.21S	21°5'31.92E
2	28°35'33.94S	21°4'58.86E
2	28°35'46.5S	21°4'26.56E
2	28°36'1.34S	21°3'48.1E
2	28°36'9.64S	21°3'26.86E
2	28°36'23.83S	21°2'49.97E
2	28°36'36.25S	21°2'18.06E
2	28°36'40.36S	21°2'6.62E
2	28°36'43.29S	21°1'56.73E
2	28°36'47.01S	21°1'43.68E
2	28°37'1.77S	21°0'52.97E
2	28°37'2.61S	21°0'52.56E
2	28°37'14.05S	21°1'1.07E
2	28°37'15.81S	21°1'1.81E
2	28°37'17.56S	21°1'2.64E
2	28°37'18.9S	21°1'3.23E
2	28°37'19.81S	21°1'3.34E
2	28°37'20.89S	21°1'3.38E
2	28°37'23.23S	21°1'2.66E
2	28°37'24.88S	21°1'2.08E
2	28°37'27.59S	21°1'1.21E
2	28°37'28.7S	21°1'1.9E
2	28°37'28.29S	21°1'2.77E
2	28°37'28.08S	21°1'4.15E
2	28°37'27.92S	21°1'5.62E
2	28°37'27.99S	21°1'7.17E
2	28°37'28.06S	21°1'8.5E
2	28°37'28.32S	21°1'9.43E
2	28°37'28.69S	21°1'10.19E
2	28°37'29.27S	21°1'11.13E
2	28°37'30.39S	21°1'12.17E
2	28°37'30.43S	21°1'48.1E
2	28°37'28.52S	21°1'50.3E
2	28°37'27.56S	21°1'51.72E
2	28°37'27.01S	21°1'53.54E
2	28°37'26.26S	21°2'3.07E
2	28°37'23.28S	21°2'41.49E
2	28°37'23.37S	21°2'42.59E
2	28°37'23.92S	21°2'44.21E
2	28°37'24.77S	21°2'45.34E
2	28°37'26.51S	21°2'46.57E
2	28°37'31.86S	21°2'50.45E

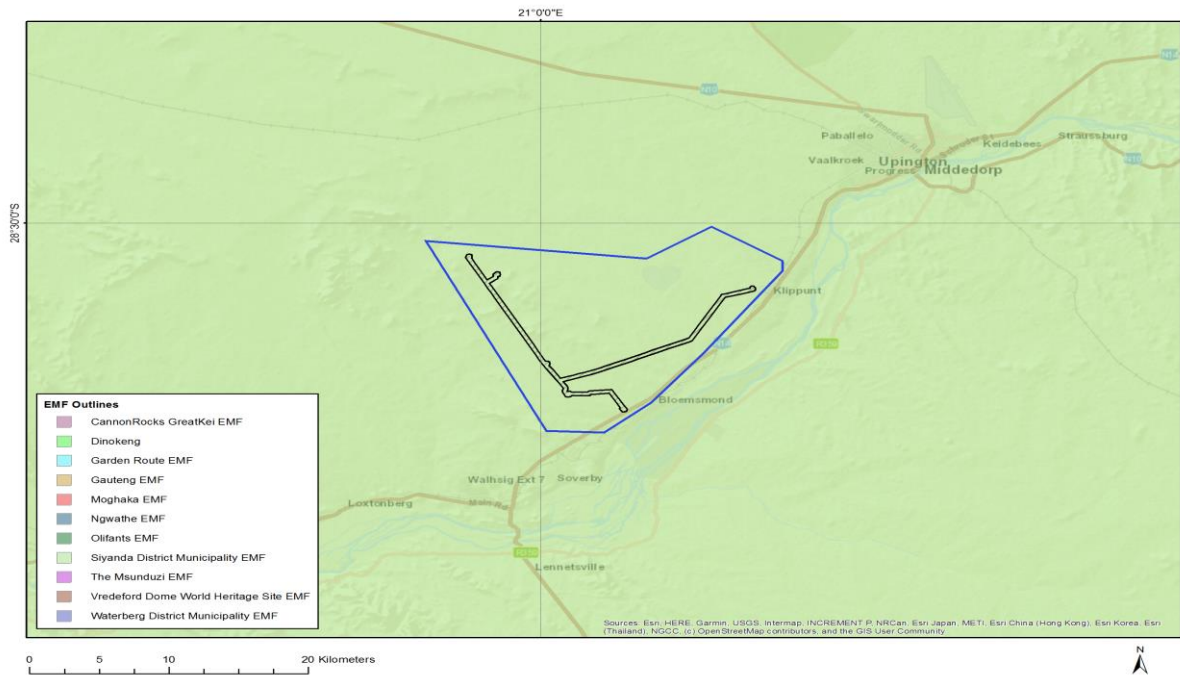
2	28°37'40.46S	21°2'56.08E
2	28°37'48.14S	21°3'1.46E
2	28°38'3.91S	21°3'12.31E
2	28°38'14.87S	21°3'19.86E
2	28°38'16.48S	21°3'20.68E
2	28°38'17.91S	21°3'20.59E
2	28°38'19.37S	21°3'20.27E
2	28°38'20.67S	21°3'19.32E
2	28°38'21.66S	21°3'18.04E
2	28°38'22.16S	21°3'16.21E
2	28°38'22.27S	21°3'15.6E
2	28°38'23.12S	21°3'13.89E
2	28°38'23.34S	21°3'12.48E
2	28°38'23.26S	21°3'11.02E
2	28°38'22.77S	21°3'9.45E
2	28°38'21.7S	21°3'8.09E
2	28°38'16.75S	21°3'4.29E
2	28°38'15.15S	21°3'3.64E
2	28°38'14.04S	21°3'3.62E
2	28°38'12.88S	21°3'3.74E
2	28°38'11.58S	21°3'4.63E
2	28°37'51.95S	21°2'51.28E
2	28°37'33.26S	21°2'38.42E
2	28°37'36.55S	21°1'56.83E
2	28°37'37.48S	21°1'55.76E
2	28°37'38.31S	21°1'55.05E
2	28°37'38.93S	21°1'53.94E
2	28°37'39.68S	21°1'52.82E
2	28°37'40.14S	21°1'51.51E
2	28°37'40.19S	21°1'49.51E
2	28°37'40.11S	21°1'47.62E
2	28°37'40.22S	21°1'31.15E
2	28°37'40.18S	21°1'12.26E
2	28°37'40.96S	21°1'11.4E
2	28°37'41.84S	21°1'10.15E
2	28°37'42.2S	21°1'9.26E
2	28°37'42.94S	21°1'7.26E
2	28°37'43.09S	21°1'5.26E
2	28°37'43.09S	21°1'3.6E
2	28°37'43.06S	21°1'0.01E
2	28°37'42.41S	21°0'58.65E
2	28°37'41.43S	21°0'57.41E
2	28°37'40.1S	21°0'56.37E
2	28°37'32.01S	21°0'51.32E
2	28°37'28.9S	21°0'49.86E
2	28°37'26.68S	21°0'49.96E
2	28°37'24.97S	21°0'50.52E
2	28°37'20.45S	21°0'51.94E
2	28°37'18.73S	21°0'51.26E
2	28°37'3.82S	21°0'40.4E
2	28°36'46.79S	21°0'27.31E
2	28°36'27.57S	21°0'11.99E
2	28°36'17.98S	21°0'5.37E
2	28°36'15.44S	21°0'3.21E
2	28°36'4.52S	20°59'56.33E
2	28°35'52.56S	20°59'48.74E
2	28°35'39.03S	20°59'40.38E
2	28°34'56.4S	20°59'13.5E
2	28°34'7.65S	20°58'42.83E
2	28°33'47.8S	20°58'30.48E

2	28°33'20.89S	20°58'13.44E
2	28°33'7.57S	20°58'5.23E
2	28°32'55.9S	20°57'57.76E
2	28°32'44.05S	20°57'50.35E
2	28°32'30.33S	20°57'41.82E
2	28°32'10.07S	20°57'29.06E
2	28°31'56.21S	20°57'20.25E
2	28°31'41.99S	20°57'11.5E
2	28°31'32.84S	20°57'5.82E
2	28°31'29.8S	20°57'5.2E
2	28°31'27.93S	20°57'6.02E
2	28°31'26.71S	20°57'7.18E
2	28°31'26.26S	20°57'7.7E
2	28°31'24.58S	20°57'8.68E
2	28°31'23.62S	20°57'10.32E
2	28°31'22.81S	20°57'13.31E
2	28°31'22.98S	20°57'16.56E
2	28°31'24.3S	20°57'18.8E
2	28°31'26.43S	20°57'20.34E
2	28°31'29.31S	20°57'20.27E
2	28°31'31.26S	20°57'20.25E
2	28°31'32.62S	20°57'19.91E
2	28°31'34.08S	20°57'19.04E

Wind and Solar developments with an approved Environmental Authorisation or applications under consideration within 30 km of the proposed area

No	EIA Reference No	Classification	Status of application	Distance from proposed area (km)
1	14/12/16/3/3/2/657	Solar CSP	Approved	3.2
2	12/12/20/1831/2	Solar CSP	Approved	3.2
3	12/12/20/1831/1	Solar CSP	Approved	3.2
4	12/12/20/2229	Solar PV	Approved	9
5	12/12/20/2169	Solar PV	Approved	28.9
6	12/12/20/2518	Solar PV	Approved	13
7	14/12/16/3/3/3/82	Solar CSP	Approved	0.6
8	12/12/20/2230	Solar PV	Approved	0
9	14/12/16/3/3/2/656	Solar CSP	Approved	3.2
10	12/12/20/1831	Solar CSP	Approved	3.2
11	14/12/16/3/3/2/816	Solar PV	Approved	0
12	14/12/16/3/3/2/821	Solar PV	Approved	20.1
13	12/12/20/2146	Solar PV	Approved	20.4
14	12/12/20/777	Solar CSP	Approved	5.9
15	12/12/20/1831/3	Solar PV	Approved	3.2

Environmental Management Frameworks relevant to the application



Environmental Management Framework	LINK
Siyanda District Municipality EMF	https://screening.environment.gov.za/ScreeningDownloads/EMF/SIYANDA_EMF_REPORT_2008.doc

Environmental screening results and assessment outcomes

The following sections contain a summary of any development incentives, restrictions, exclusions or prohibitions that apply to the proposed development footprint as well as the most environmental sensitive features on the footprint based on the footprint sensitivity screening results for the application classification that was selected. The application classification selected for this report is:

Utilities Infrastructure | Electricity | Distribution and Transmission | Powerline | Powerline.

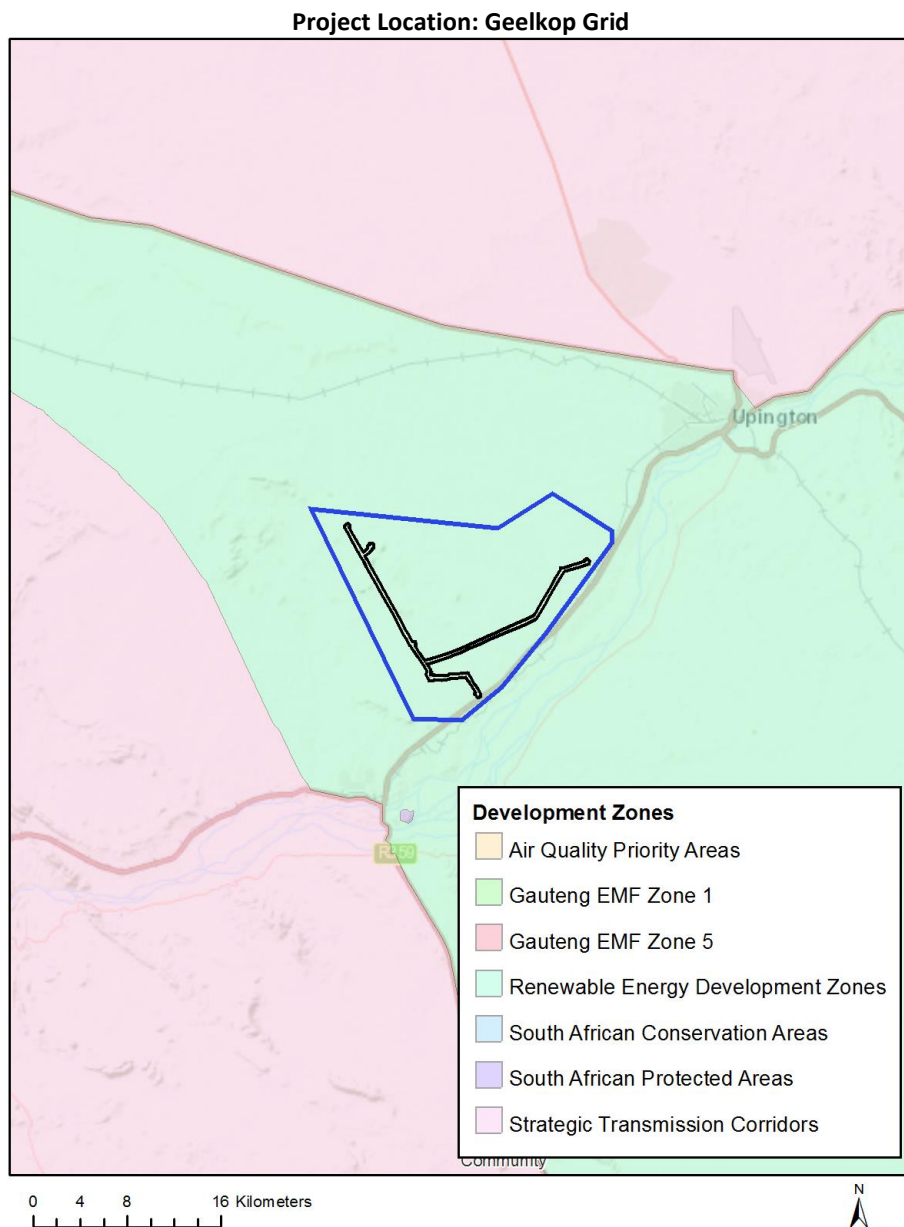
Relevant development incentives, restrictions, exclusions or prohibitions

The following development incentives, restrictions, exclusions or prohibitions and their implications that apply to this footprint are indicated below.

Incentive, restriction or prohibit	Implication

ion	
Strategic Transmission Corridor-Northern corridor	https://screening.environment.gov.za/ScreeningDownloads/DevelopmentZones/GNR_350_of_13_April_2017.pdf
Renewable energy development zones 7-Upington	https://screening.environment.gov.za/ScreeningDownloads/DevelopmentZones/GNR_350_of_13_April_2017.pdf

Map indicating proposed development footprint within applicable development incentive, restriction, exclusion or prohibition zones



Proposed Development Area Environmental Sensitivity

The following summary of the development footprint environmental sensitivities is identified. Only the highest environmental sensitivity is indicated. The footprint environmental sensitivities for the proposed development footprint as identified, are indicative only and must be verified on site by a suitably qualified person before the specialist assessments identified below can be confirmed.

Theme	Very High sensitivity	High sensitivity	Medium sensitivity	Low sensitivity
Agriculture Theme				X
Animal Species Theme			X	
Aquatic Biodiversity Theme	X			
Archaeological and Cultural Heritage Theme			X	
Civil Aviation Theme				X
Defence Theme			X	
Paleontology Theme			X	
Plant Species Theme			X	
Terrestrial Biodiversity Theme	X			

Specialist assessments identified

Based on the selected classification, and the environmental sensitivities of the proposed development footprint, the following list of specialist assessments have been identified for inclusion in the assessment report. It is the responsibility of the EAP to confirm this list and to motivate in the assessment report, the reason for not including any of the identified specialist study including the provision of photographic evidence of the footprint situation.

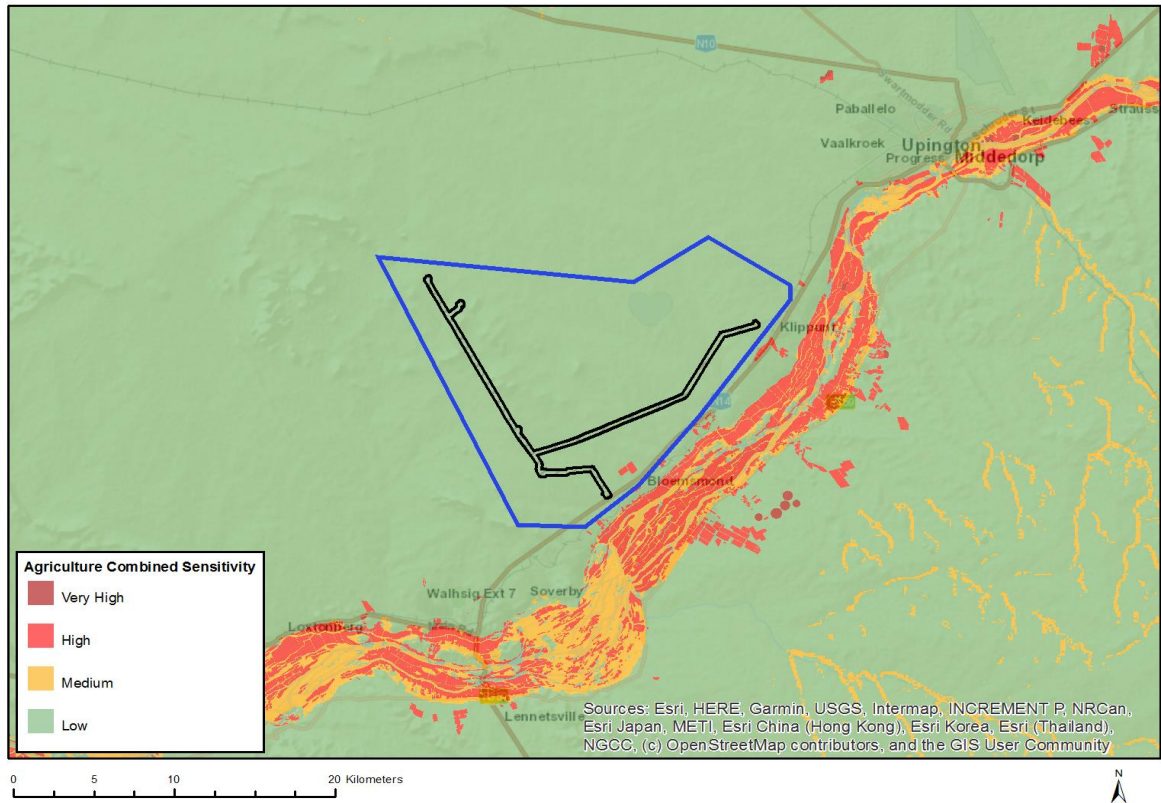
N o	Special ist assess ment	Assessment Protocol
1	Agricult ural Impact Assessm ent	https://screening.environment.gov.za/ScreeningDownloads/AssessmentProtocols/Gazetted General Agriculture Assessment Protocols.pdf
2	Landscap e/Visu al Impact Assessm ent	https://screening.environment.gov.za/ScreeningDownloads/AssessmentProtocols/Gazetted General Requirement Assessment Protocols.pdf
3	Archaeo logical and Cultural Heritage Impact Assessm ent	https://screening.environment.gov.za/ScreeningDownloads/AssessmentProtocols/Gazetted General Requirement Assessment Protocols.pdf
4	Palaeon tology Impact Assessm ent	https://screening.environment.gov.za/ScreeningDownloads/AssessmentProtocols/Gazetted General Requirement Assessment Protocols.pdf

	ent	
5	Terrestrial Biodiversity Impact Assessment	https://screening.environment.gov.za/ScreeningDownloads/AssessmentProtocols/Gazetted Terrestrial Biodiversity Assessment Protocols.pdf
6	Aquatic Biodiversity Impact Assessment	https://screening.environment.gov.za/ScreeningDownloads/AssessmentProtocols/Gazetted Aquatic Biodiversity Assessment Protocols.pdf
7	Avian Impact Assessment	https://screening.environment.gov.za/ScreeningDownloads/AssessmentProtocols/Gazetted Avifauna Assessment Protocols.pdf
8	Civil Aviation Assessment	https://screening.environment.gov.za/ScreeningDownloads/AssessmentProtocols/Gazetted Civil Aviation Installations Assessment Protocols.pdf
9	RFI Assessment	https://screening.environment.gov.za/ScreeningDownloads/AssessmentProtocols/Gazetted General Requirement Assessment Protocols.pdf
10	Geotechnical Assessment	https://screening.environment.gov.za/ScreeningDownloads/AssessmentProtocols/Gazetted General Requirement Assessment Protocols.pdf
11	Plant Species Assessment	https://screening.environment.gov.za/ScreeningDownloads/AssessmentProtocols/Gazetted General Requirement Assessment Protocols.pdf
12	Animal Species Assessment	https://screening.environment.gov.za/ScreeningDownloads/AssessmentProtocols/Gazetted General Requirement Assessment Protocols.pdf

Results of the environmental sensitivity of the proposed area.

The following section represents the results of the screening for environmental sensitivity of the proposed footprint for relevant environmental themes associated with the project classification. It is the duty of the EAP to ensure that the environmental themes provided by the screening tool are comprehensive and complete for the project. Refer to the disclaimer.

MAP OF RELATIVE AGRICULTURE THEME SENSITIVITY

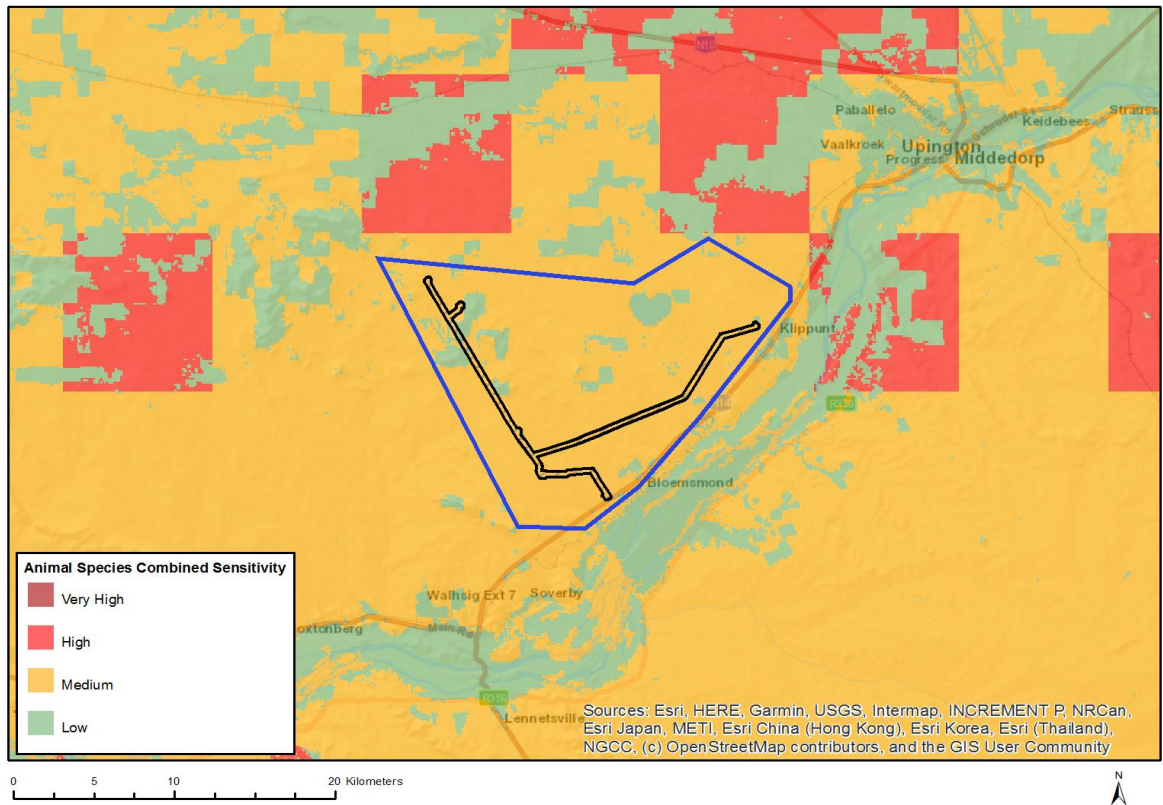


Very High sensitivity	High sensitivity	Medium sensitivity	Low sensitivity
			X

Sensitivity Features:

Sensitivity	Feature(s)
Low	Land capability;01. Very low/02. Very low/03. Low-Very low/04. Low-Very low/05. Low

MAP OF RELATIVE ANIMAL SPECIES THEME SENSITIVITY

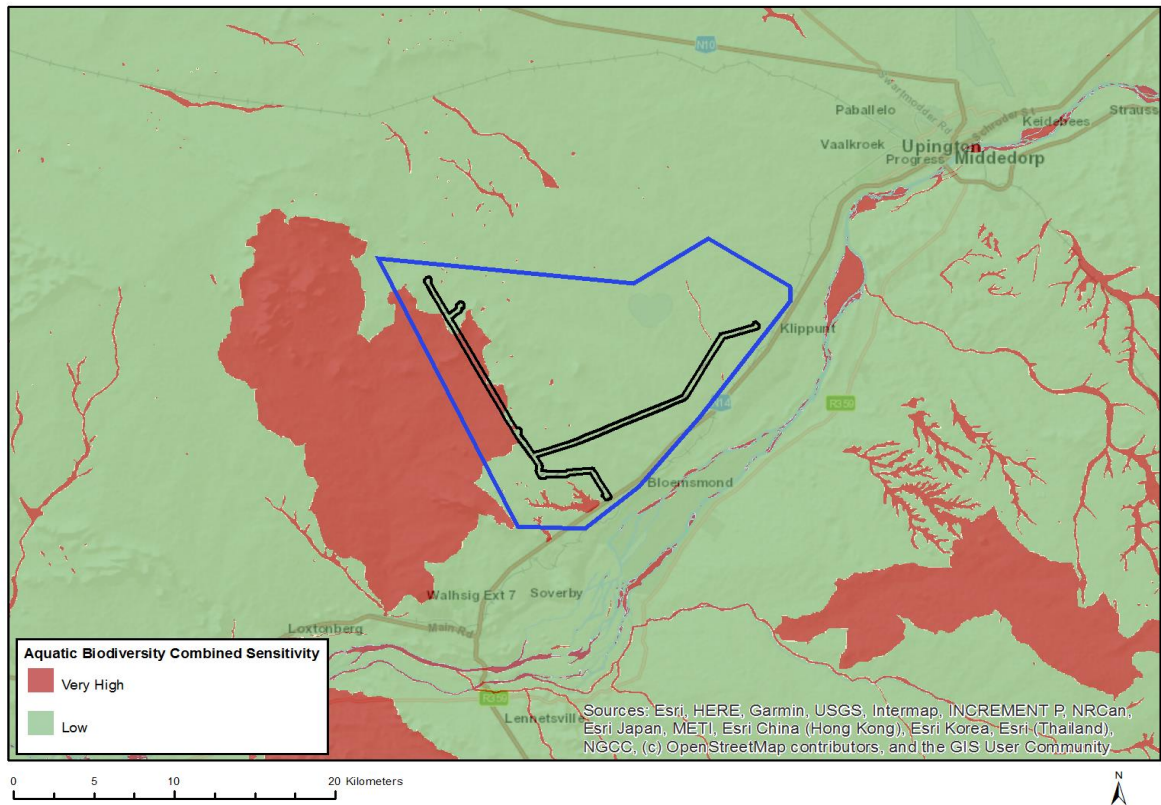


Very High sensitivity	High sensitivity	Medium sensitivity	Low sensitivity
		X	

Sensitivity Features:

Sensitivity	Feature(s)
Low	Low sensitivity
Medium	Aves-Neotis ludwigii

MAP OF RELATIVE AQUATIC BIODIVERSITY THEME SENSITIVITY

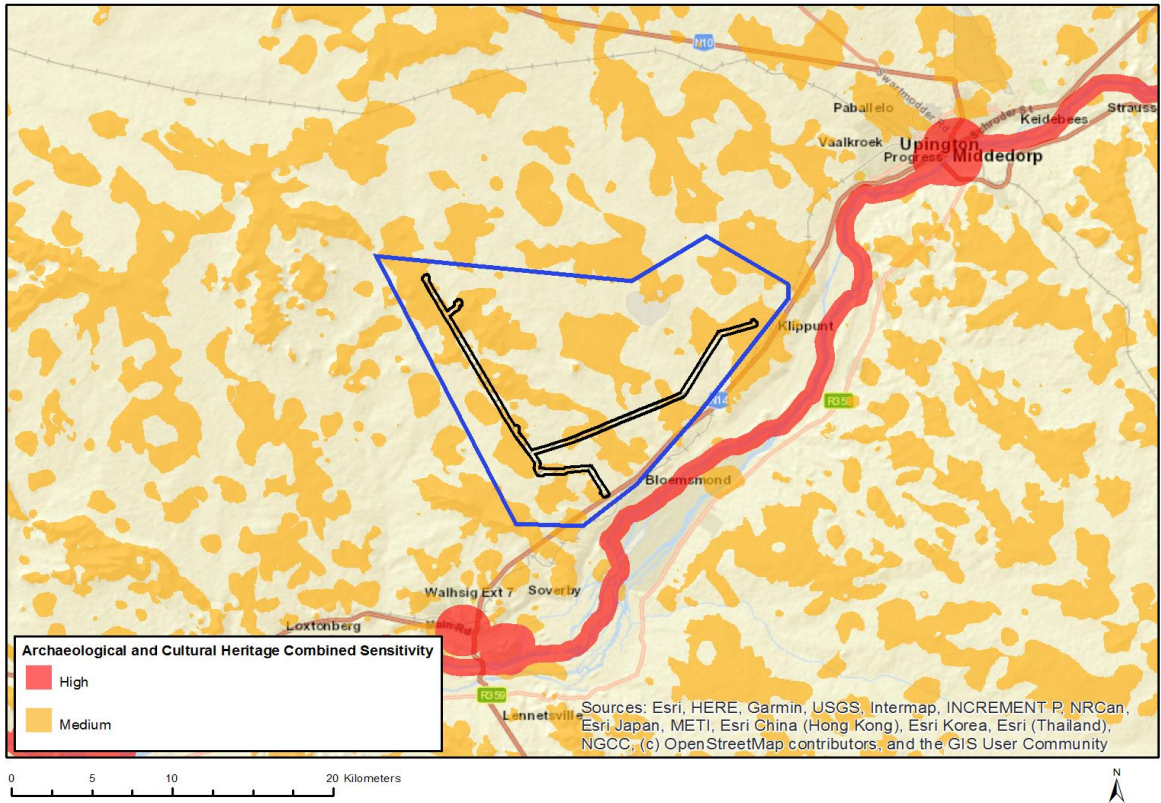


Very High sensitivity	High sensitivity	Medium sensitivity	Low sensitivity
X			

Sensitivity Features:

Sensitivity	Feature(s)
Low	Low sensitivity
Very High	Wetlands and Estuaries
Very High	Freshwater ecosystem priority area quinary catchments

MAP OF RELATIVE ARCHAEOLOGICAL AND CULTURAL HERITAGE THEME SENSITIVITY

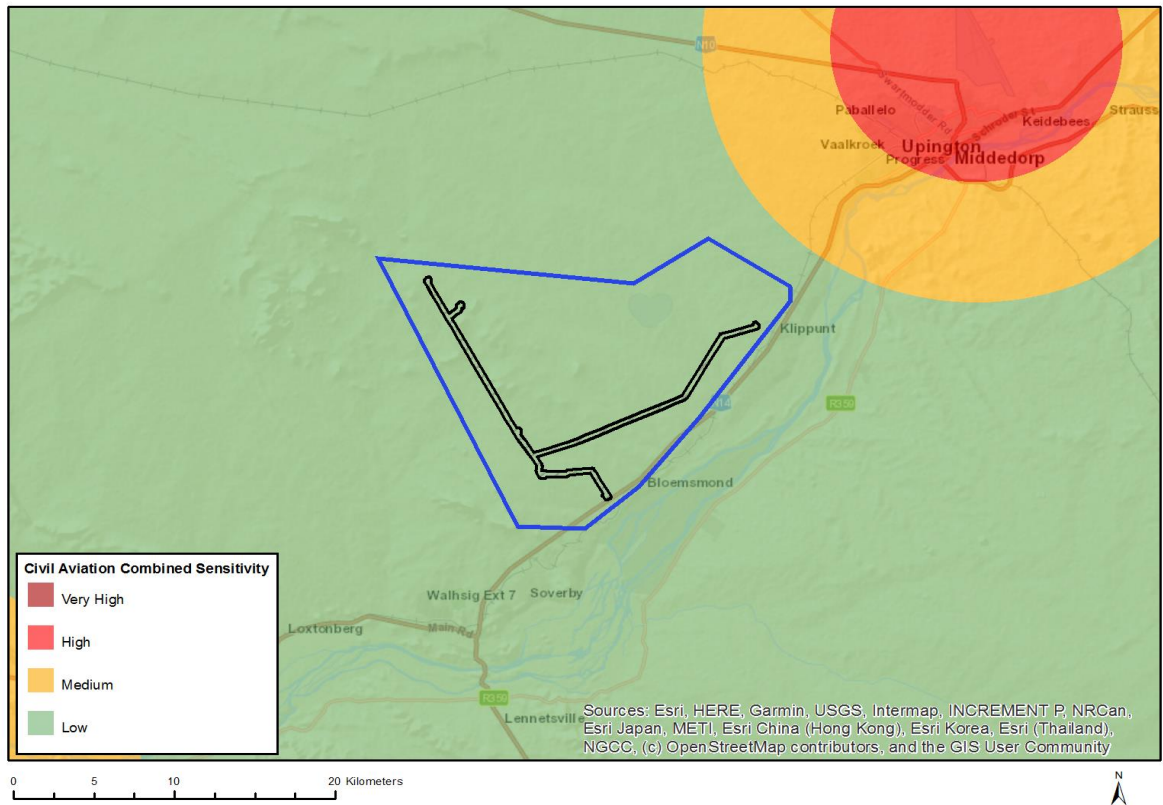


Very High sensitivity	High sensitivity	Medium sensitivity	Low sensitivity
		X	

Sensitivity Features:

Sensitivity	Feature(s)
Medium	Mountain or ridge

MAP OF RELATIVE CIVIL AVIATION THEME SENSITIVITY

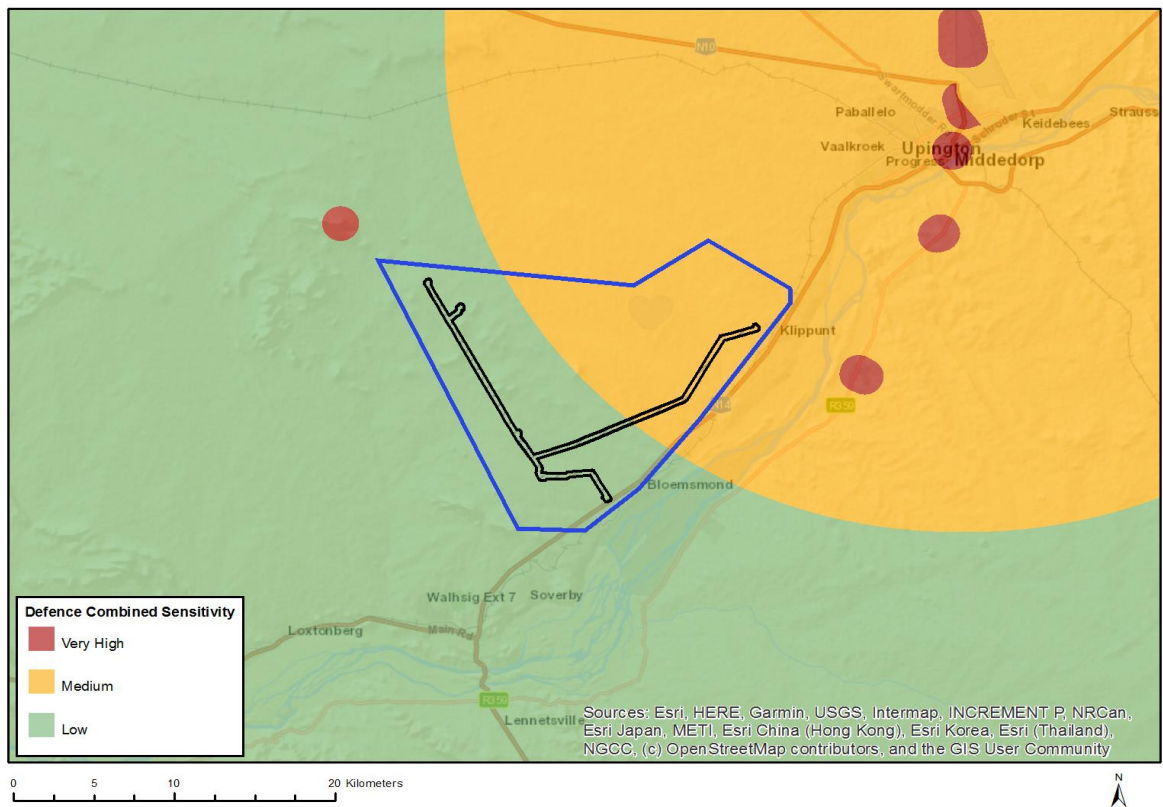


Very High sensitivity	High sensitivity	Medium sensitivity	Low sensitivity
			X

Sensitivity Features:

Sensitivity	Feature(s)
Low	Low sensitivity

MAP OF RELATIVE DEFENCE THEME SENSITIVITY

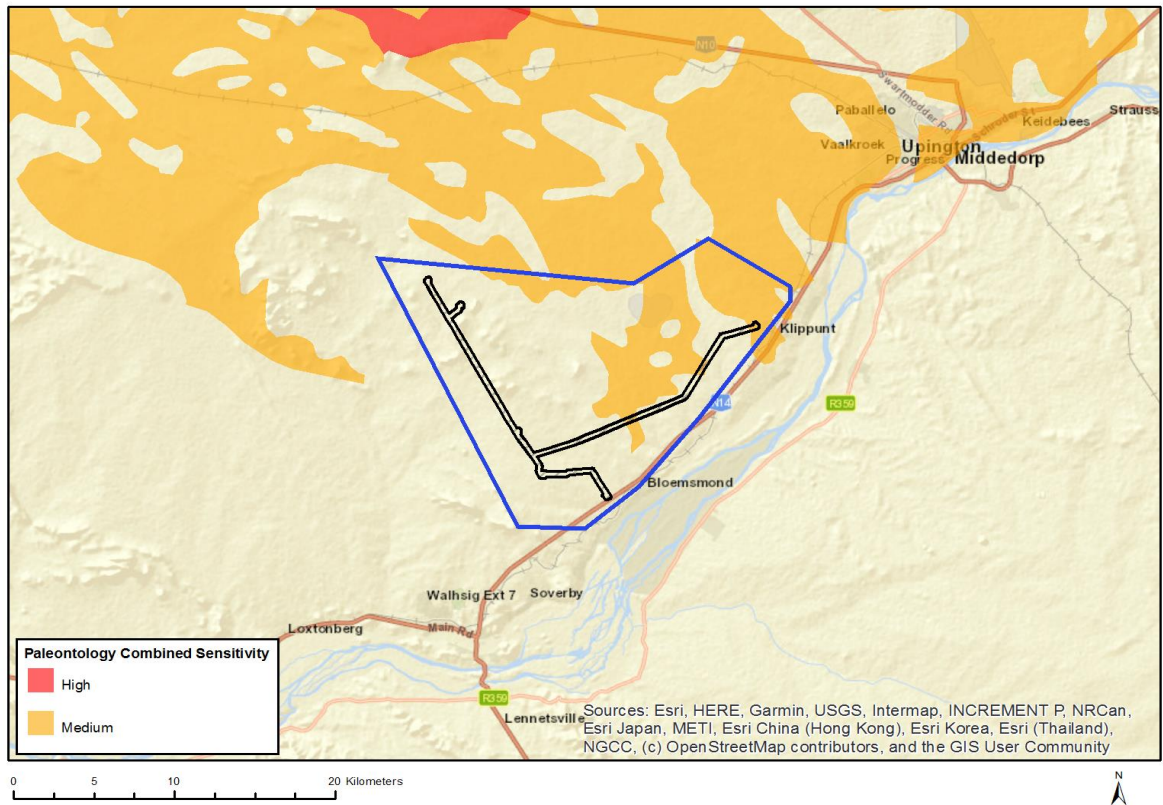


Very High sensitivity	High sensitivity	Medium sensitivity	Low sensitivity
		X	

Sensitivity Features:

Sensitivity	Feature(s)
Low	Low sensitivity
Medium	Defence Site

MAP OF RELATIVE PALEONTOLOGY THEME SENSITIVITY

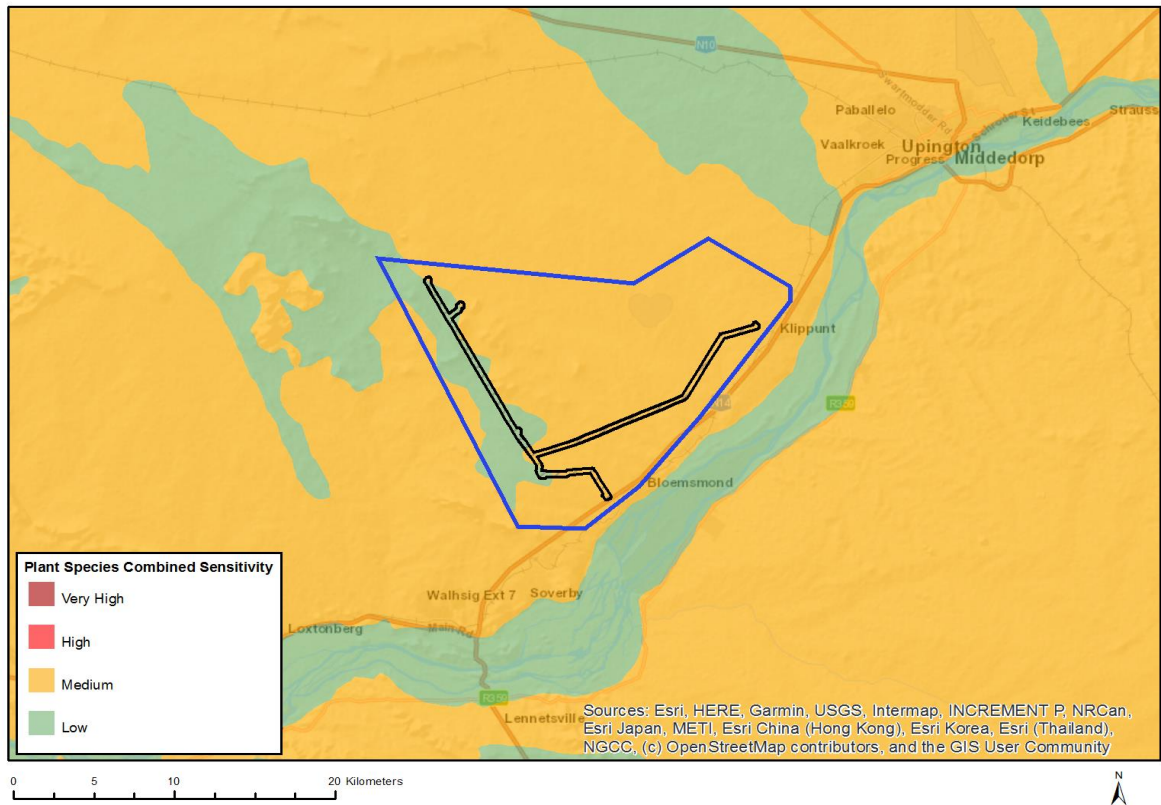


Very High sensitivity	High sensitivity	Medium sensitivity	Low sensitivity
		X	

Sensitivity Features:

Sensitivity	Feature(s)
Medium	Rock units with a medium paleontological sensitivity

MAP OF RELATIVE PLANT SPECIES THEME SENSITIVITY

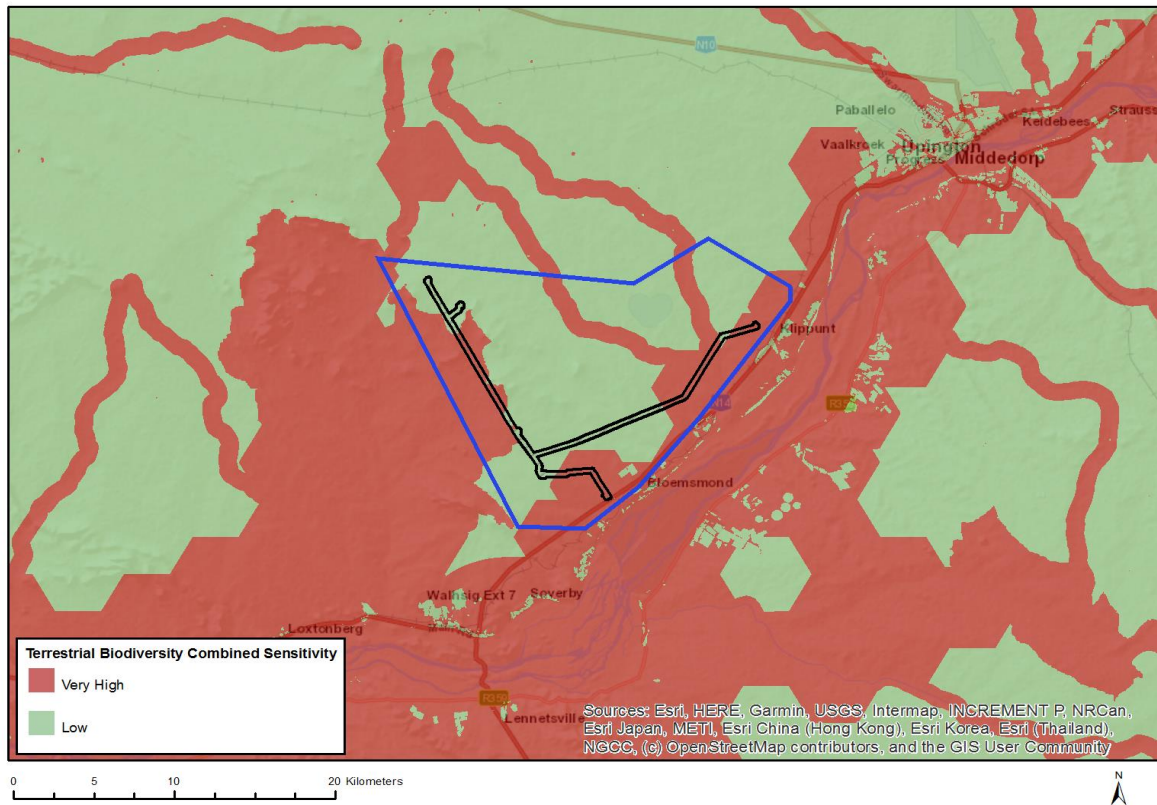


Very High sensitivity	High sensitivity	Medium sensitivity	Low sensitivity
		X	

Sensitivity Features:

Sensitivity	Feature(s)
Low	Low sensitivity
Medium	Sensitive species 44

MAP OF RELATIVE TERRESTRIAL BIODIVERSITY THEME SENSITIVITY



Very High sensitivity	High sensitivity	Medium sensitivity	Low sensitivity
X			

Sensitivity Features:

Sensitivity	Feature(s)
Low	Low Sensitivity
Very High	Critical Biodiversity Area 2
Very High	Ecological Support Area
Very High	Freshwater ecosystem priority area quinary catchments