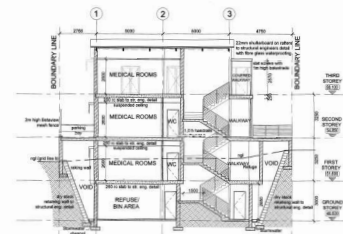
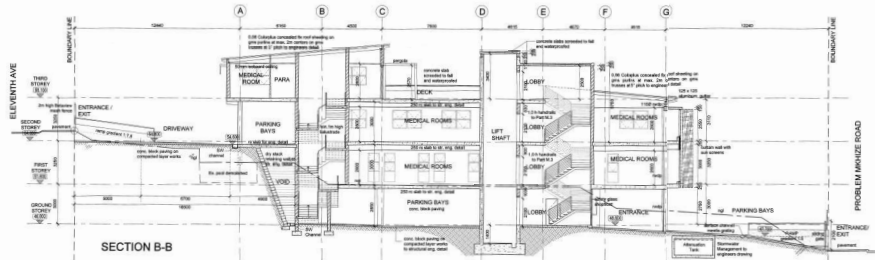


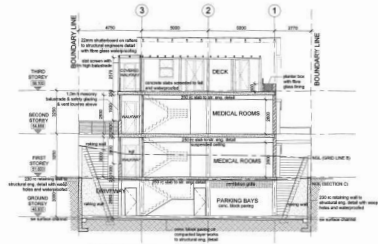
SECTION A-A



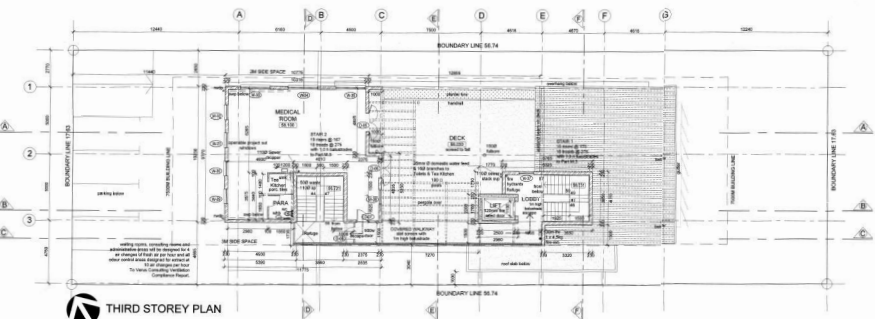
SECTION D-D



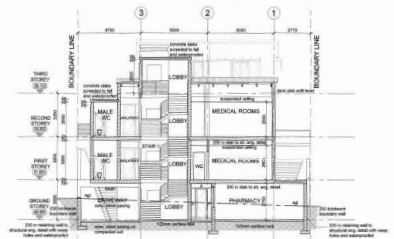
SECTION B-B



SECTION E-E



THIRD STOREY PLAN



SECTION F-F

SHEET **210** ONLINE COPY
 ETHERWINE MUNICIPALITY
 APPLICATION NUMBER
20090107
 BUILDING APPLICATION
 11/05/21

261 PROBLEM MKHIZE ROAD
PROPOSED MEDICAL OFFICES
 FOR ISANDA ENGINEERING CC
 REMAINDER OF ERP 1205 DURBAN
 THIRD STOREY PLAN,
 SECTIONS A-A, B-B,
 D-D, E-E & F-F
 SCALE: 1:100
 DATE: 20/03/2021
 DRAWN BY: 018977-D1
 REV: No. 1 - A
ETHERWINE ARCHITECTS