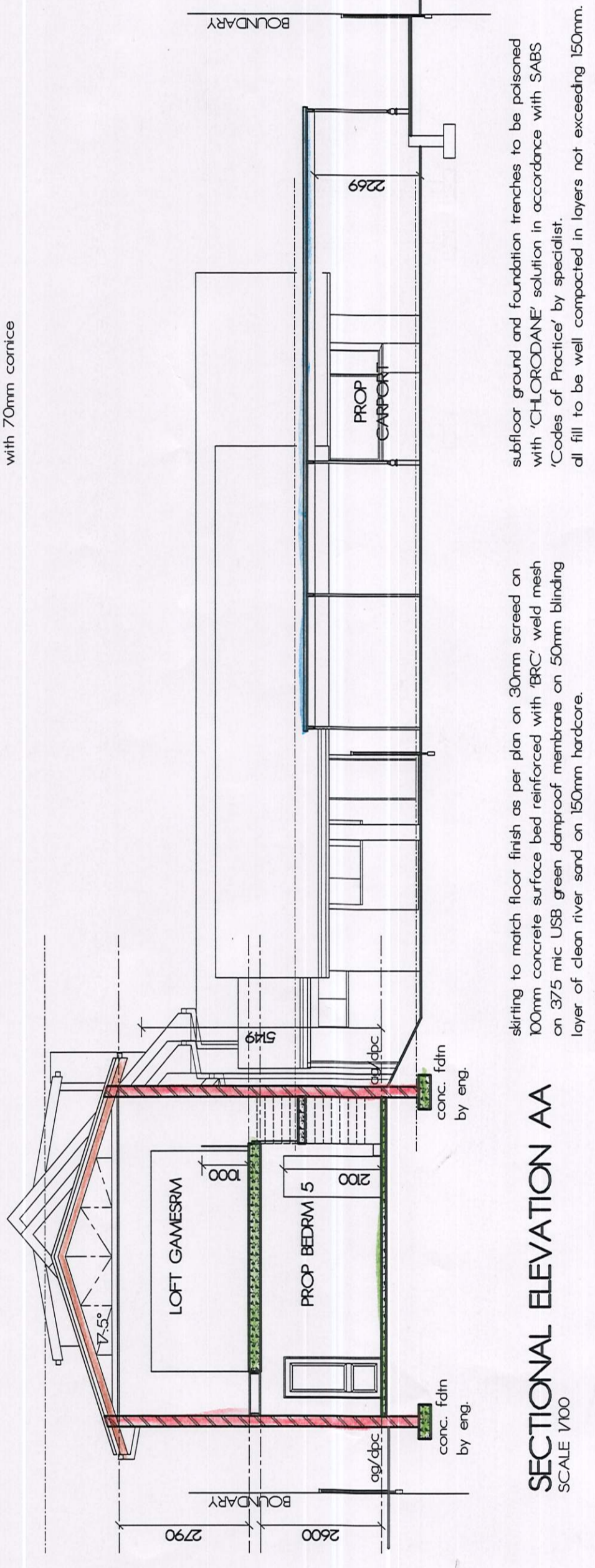
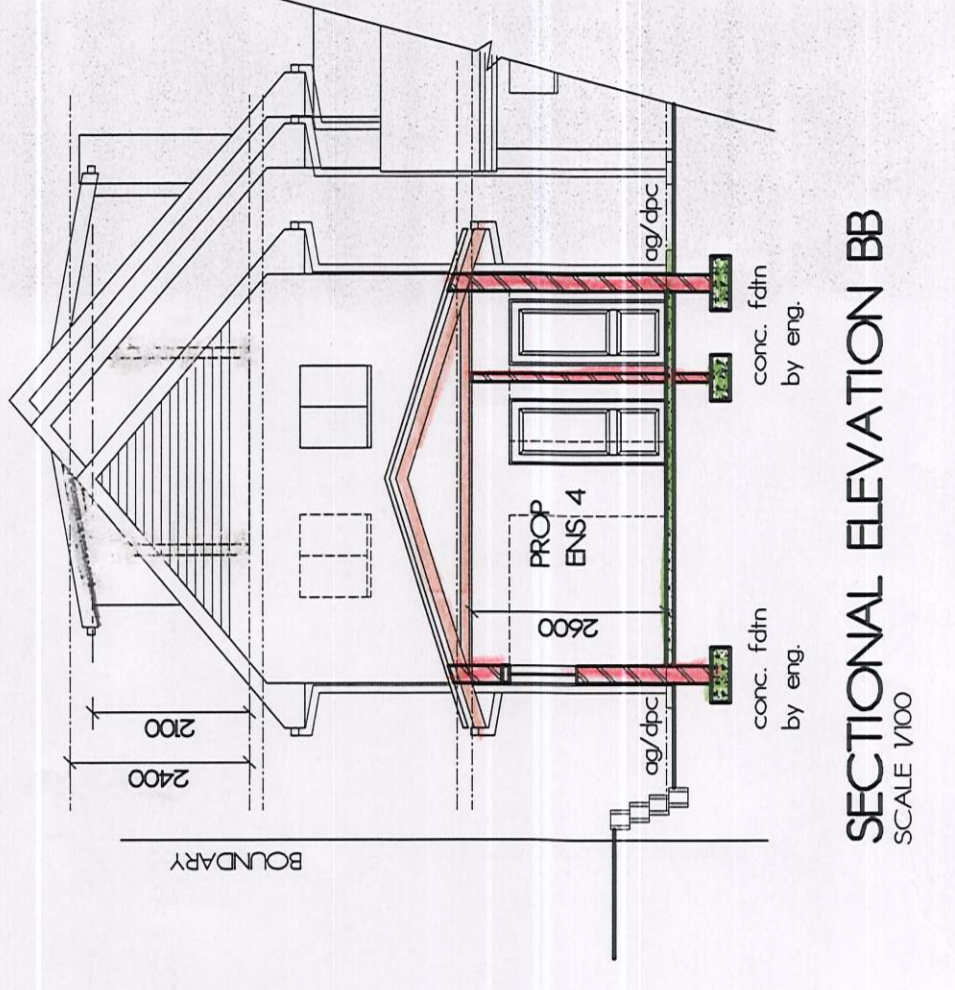


ALUMINIUM COATINGS ON SURFACES OF ALUMINIUM 15% RESIN ON 50% MICRO UNDER COAT ON RAL 9005 INTERIM PRIMER & 2 COATS OF TOP COAT. ALL COATINGS TO BE APPLIED IN ACCORDANCE WITH MANUFACTURERS SPECIFICATIONS & CERTIFIED BY ENGINEERS WITH 7.5% PITCH ON 1833mm WALL PLATE WITH 6.5mm CLEARANCE. BRUSH OFF EXCESS COATINGS IMMEDIATELY TO PREVENT FROM HARDENING. PAINTING TO BE DONE WITH 70MM BRUSH WITH 25MM CORNER.

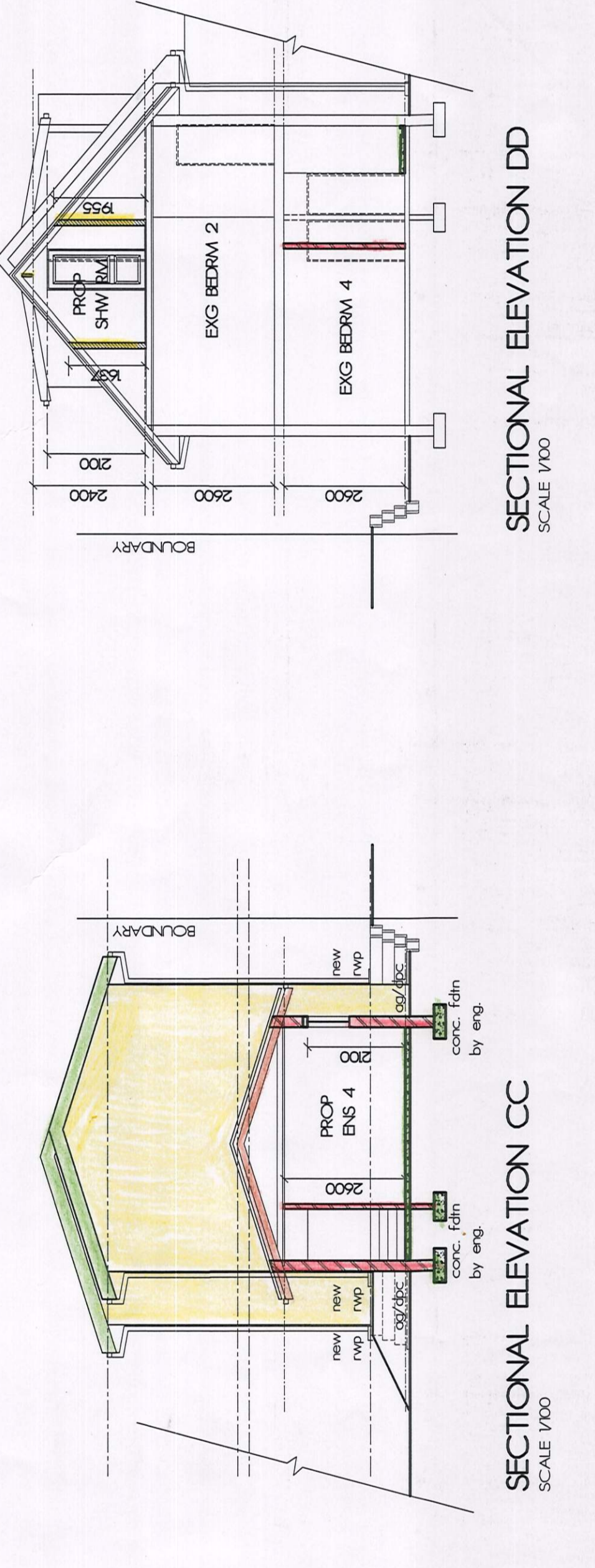


NE ELEVATION
SCALE 1:20

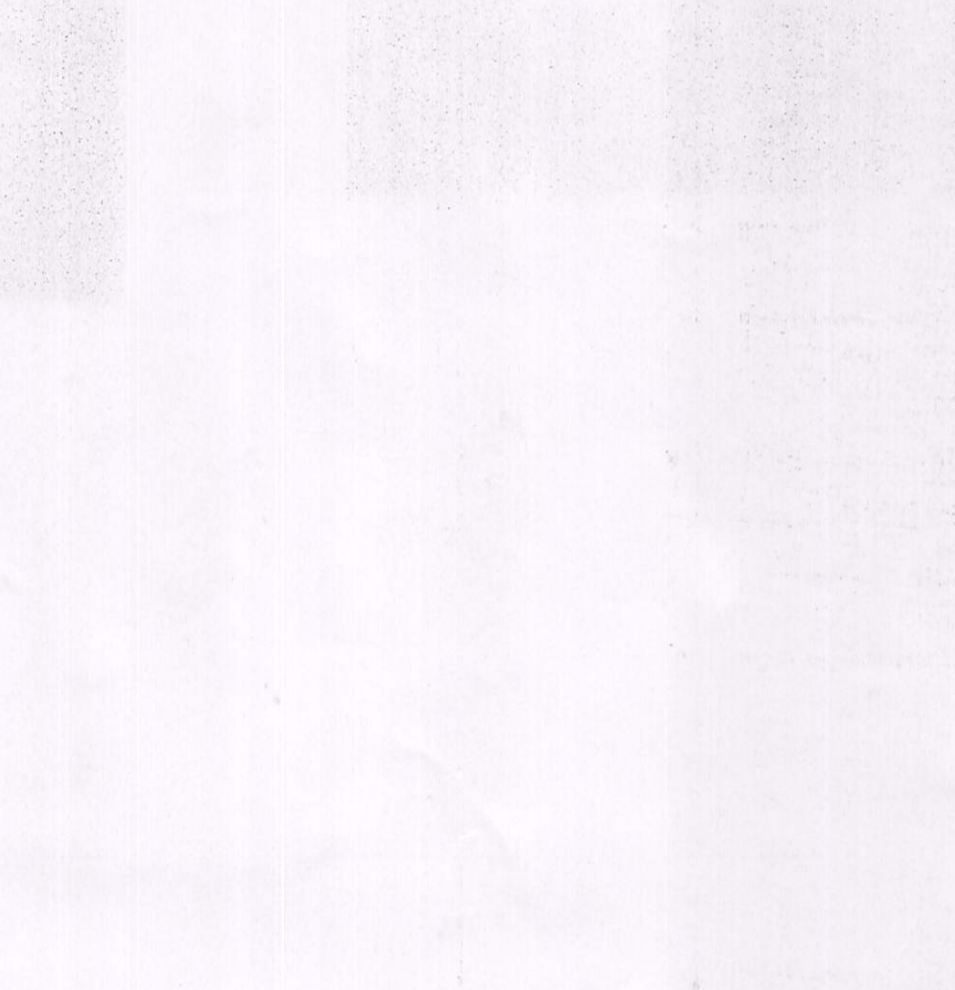


SECTIONAL ELEVATION BB
SCALE 1:20

ALUMINIUM COATINGS ON SURFACES OF ALUMINIUM 15% RESIN ON 50% MICRO UNDER COAT ON RAL 9005 INTERIM PRIMER & 2 COATS OF TOP COAT. ALL COATINGS TO BE APPLIED IN ACCORDANCE WITH MANUFACTURERS SPECIFICATIONS & CERTIFIED BY ENGINEERS WITH 7.5% PITCH ON 1833mm WALL PLATE WITH 6.5mm CLEARANCE. BRUSH OFF EXCESS COATINGS IMMEDIATELY TO PREVENT FROM HARDENING. PAINTING TO BE DONE WITH 70MM BRUSH WITH 25MM CORNER.

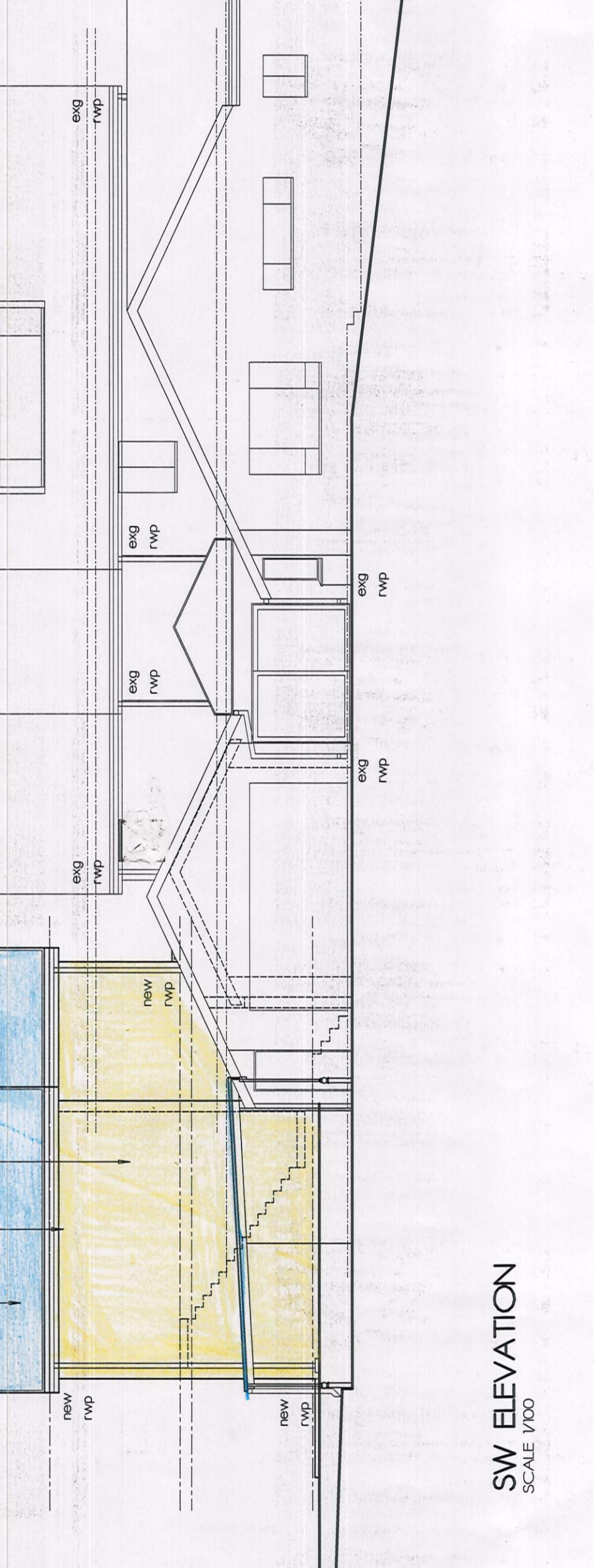


SECTIONAL ELEVATION CC
SCALE 1:20

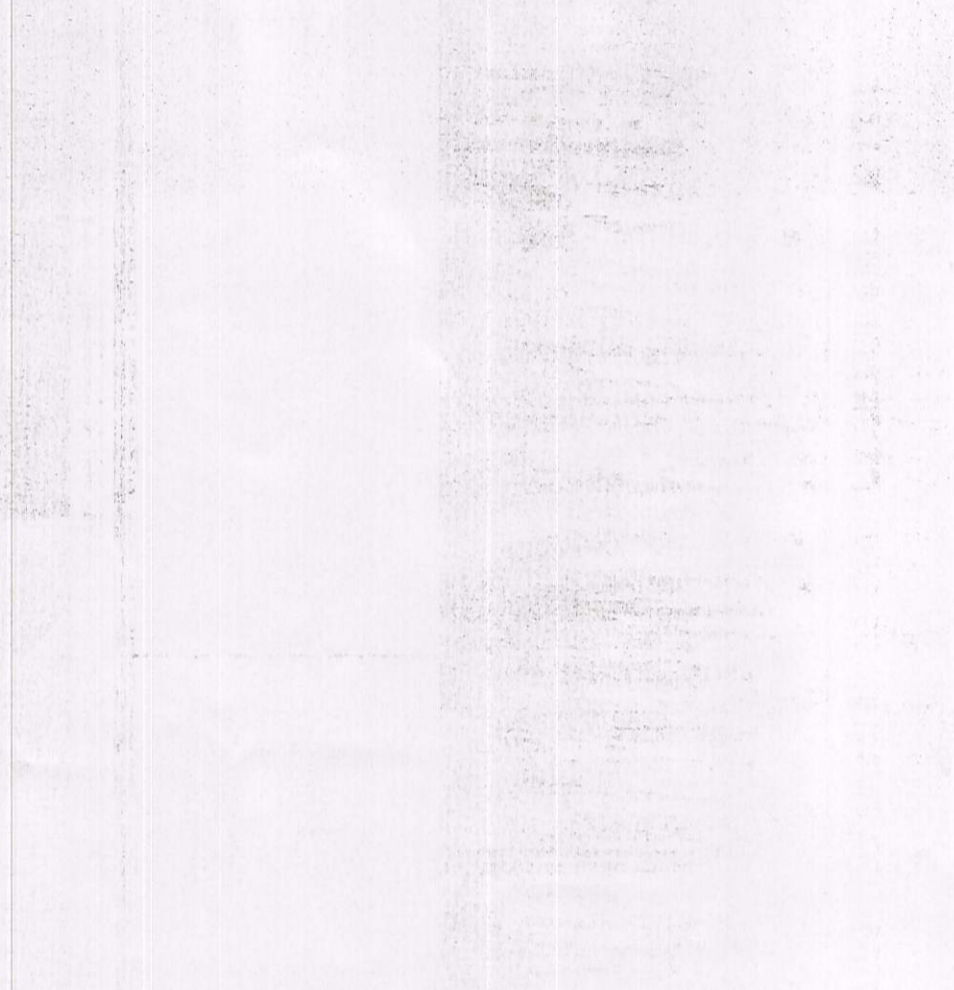


SECTIONAL ELEVATION DD
SCALE 1:20

ALUMINIUM COATINGS ON SURFACES OF ALUMINIUM 15% RESIN ON 50% MICRO UNDER COAT ON RAL 9005 INTERIM PRIMER & 2 COATS OF TOP COAT. ALL COATINGS TO BE APPLIED IN ACCORDANCE WITH MANUFACTURERS SPECIFICATIONS & CERTIFIED BY ENGINEERS WITH 7.5% PITCH ON 1833mm WALL PLATE WITH 6.5mm CLEARANCE. BRUSH OFF EXCESS COATINGS IMMEDIATELY TO PREVENT FROM HARDENING. PAINTING TO BE DONE WITH 70MM BRUSH WITH 25MM CORNER.



SW ELEVATION
SCALE 1:20



SE ELEVATION
SCALE 1:20

GLAZING SCHEDULE

Description	Frame	Glazing	Unit	Notes
Window 1	ALUMINIUM	ANIRING	4mm	3.0m x 1.5m
Window 2	ALUMINIUM	ANIRING	4mm	4m x 1.5m
Window 3	ALUMINIUM	ANIRING	4mm	3.0m x 1.5m
Window 4	ALUMINIUM	ANIRING	4mm	4m x 1.5m
Window 5	ALUMINIUM	ANIRING	4mm	3.0m x 1.5m
Window 6	ALUMINIUM	ANIRING	4mm	4m x 1.5m
Window 7	ALUMINIUM	ANIRING	4mm	3.0m x 1.5m
Window 8	ALUMINIUM	ANIRING	4mm	4m x 1.5m
Window 9	ALUMINIUM	ANIRING	4mm	3.0m x 1.5m
Window 10	ALUMINIUM	ANIRING	4mm	4m x 1.5m

HOT WATER DEMAND - MAIN BUILDING

Occupancy	Volume to Heat	Time to Heat	Total Hot Water Demand
H4	3	6	18

PIPE & GEYSER INSULATION
INSTALL 50mm THICK NON-COMBUSTIBLE LIGHTWEIGHT GLASSWOL INSULATION AROUND GEYSERS - SEAL EDGES WITH DUCT TAPE.

Solar panel general notes
SOLAR PANELS ARE TO BE EARLY FACE NORTH AND BE ANGLED AT 7° LATITUDE LOCATION OF INSTALLATION.

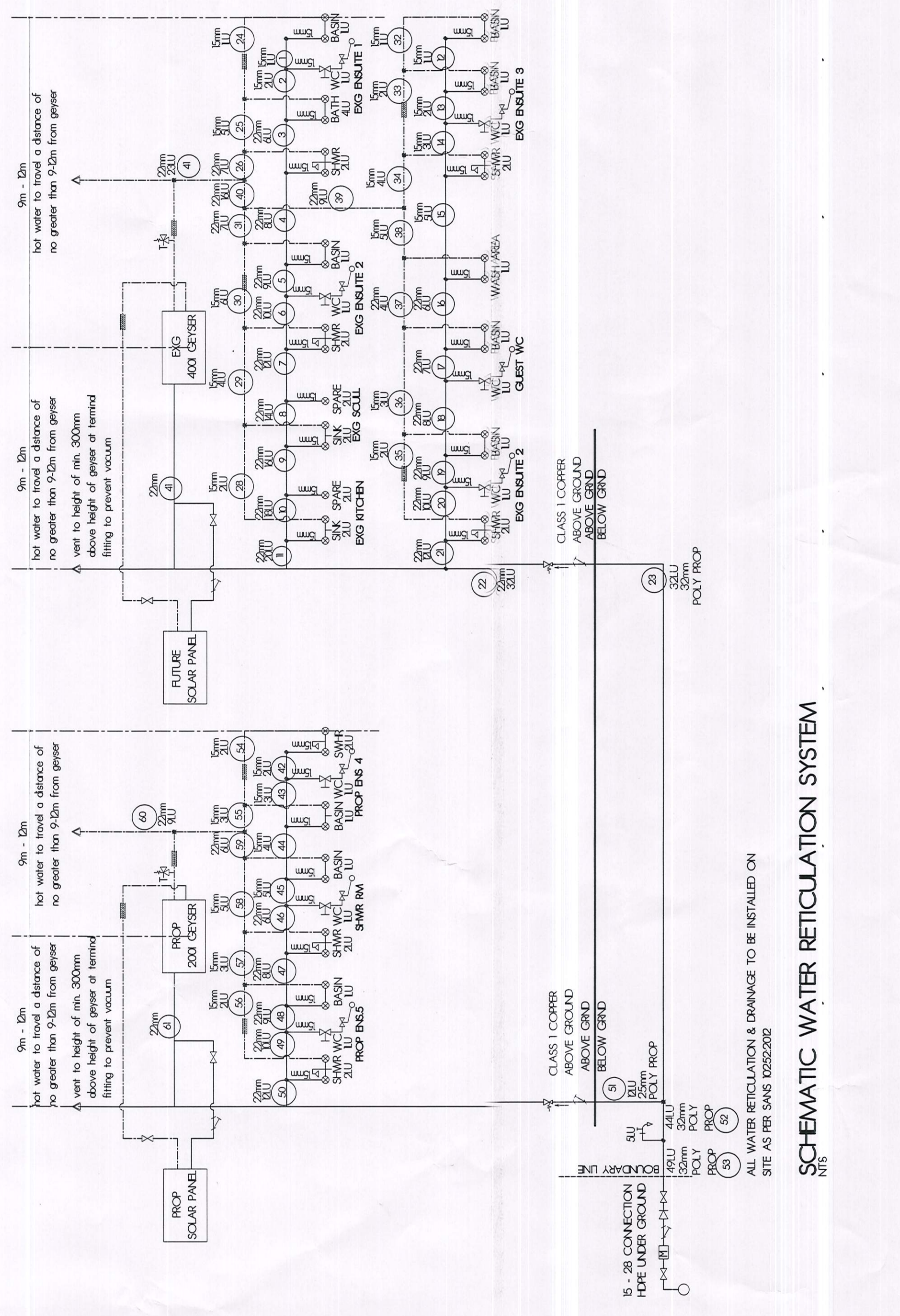
GENERAL NOTES:
All glazing to comply with SANS 10400:2011. Toughened & laminated safety glass to comply with SANS 1024-1. All individual panes of safety glazing to be permanently fixed to the frame.

PRESTATION CALCULATIONS:

ZONE	NET FLOOR AREA - GROUND STOREY	20% OF FLOOR AREA	TOTAL GLAZED AREA	CONDUCTIVITY VALUE OF FRAME - Usafe	CONDUCTIVITY VALUE OF FRAME - Usafe	MAX SOLAR HEAT GAIN COEFFICIENT (SEC VALUE)
S1	7166m²	1433m²	1041m²	1.0	1.0	0.63m²/m²

ANNUAL ENERGY DEMAND & CONSUMPTION

TYPE OF LIGHT	WATTAGE/ITEM	NO. OF ITEMS	TOTAL WATTAGE/HR	HS USED/HR	TOTAL DEMAND/HR	TOTAL HS/HR
LED DOWNLIGHTER	5W	8	40W	0.004kWh	240kWh	87360 kWh/year
LED DOWNLIGHTER	9W	4	36W	0.0036kWh	216kWh	78624 kWh/year
TOTAL ENERGY CONSUMPTION - GROUND STOREY			76W	0.0076kWh	456kWh	165984 kWh/year



SCHEMATIC WATER RETICULATION SYSTEM

OWNER:
MR & MRS SIDYOT FAMILY TRUST

PROJECT:
ALTERATIONS TO EXISTING DWELLING

ADDRESS:
27 STIRLING CRESCENT
DURBAN NORTH

DATE:
2024

SCALE:
AS SHOWN

SHEET NO.:
2/2

JOB NO.:
4001

DATE OF ISSUE:
17/03/2024

SCALE:
AS SHOWN

SHEET NO.:
2/2

JOB NO.:
4001

DATE OF ISSUE:
17/03/2024

DESIGN & DRAWING
TECHNOLOGIST
P.O. BOX 1234
DURBAN
KZN
SOUTH AFRICA
031 222 1111
www.designanddrawing.co.za