

29/11/2012

Dear Stakeholder

Environmental Authorisation Processes for the proposed Re-processing of the Anglo American Platinum Waterval Tailings Storage Facilities located in Rustenburg, North West Province

Anglo American Platinum Limited: Rustenburg Platinum Mines Limited (RPM) is situated near Rustenburg, in the North West Province. The Waterval Tailings Storage Facilities (TSFs), which are positioned in the RPM lease area, are located 4 km east of Rustenburg, 1.5 km west of Bokamoso, 3.5 km north of Waterkloof and 3.5 km south of Boitekong. The Waterval TSFs (East and West dams) were previously used to deposit tailings material from mineral processing operations. Following tests conducted on the Waterval tailings, latent reserves have been identified that warrant the re-processing of the tailings. The re-processing of the Waterval TSFs was authorised by the Department of Minerals and Energy (now the Department of Mineral Resources) as part of an amendment to the existing Environmental Management Programme Report (EMPR) in 2002. Although authorised, the re-processing of the Waterval tailings has not yet commenced and recent changes to proposed infrastructure and the layout of the project require the EMPR to be amended again. Additionally, some of the changes involve activities for which environmental authorisation from the North West Provincial Department of Economic Development, Environment, Conservation and Tourism (NWDEDECT) will be required.

The re-processing activity involves the use of hydraulic hoses, which sluice the mining face of the tailings. The resulting slurry collects in a sump via a system of drains or launders. The launder will extend from the southern portion of each TSF toward the collection sump. Two satellite pump stations will be installed within the launders to ensure that the coarse washed material reaches the collection sump. The Western Dam will be mined in three benches, namely an upper, middle and lower bench, each 14 m, 12 m and 12 m in height respectively. The Eastern Dam will be mined in two benches, an upper and lower bench, each being 12 m in height. The slurry will then be pumped (via a proposed pump station) through a proposed pipeline to the Western Limb Tailings Retreatment (WLTR) Plant.

A pre-treatment plant will be incorporated into the pump station, including a receiving facility, screening, surge tanks and thickeners, which are proposed to pre-treat the slurry before piping it to the WLTR Plant. The pre-treatment plant will also be used for water recovery prior to piping the slurry to the WLTR plant. The pipeline route has been selected based on numerous determining factors, including gradient, land ownership, existing servitudes and land stability.

At the WLTR plant, the minerals contained in the tailings material will be extracted from the slurry. The WLTR Plant was initially constructed to re-treat tailings material from the Klipfontein TSF, which is located 6 km south east of the Waterval TSFs. The re-processing of the Klipfontein TSF is expected to reach completion in 2015, at which point the re-processing of the Waterval TSFs will be initiated.

The process, design and layout changes to the re-process of the Waterval TSFs project include: a change to the location of the proposed pump station with the inclusion of a pre-treatment plant; the construction of at least one booster pump station along the pipeline; the addition of two satellite pump stations within the launders; a pollution control dam; an amendment to the proposed pipeline route; an increase in the height of the Hoedspruit TSF to incorporate the tailings material from the re-processing of the Waterval TSFs and the addition of 4 IsaMills™ within Mainstream Inert Grinding (MIG) applications within the WLTR Plant facility. Refer to Appendix A: Locality Map for site location and the proposed layout plan.

In accordance with National Environmental Management Act (No. 107 of 1998) as amended (NEMA) Environmental Impact Assessment Regulations (EIA) 2010, Government Notices (GN. Rs) 544 and 545, the undertaking of certain listed activities requires environmental authorisation.

The activities listed in GN. R 544 associated with the proposed project include:

- Activity 9;
- Activity 10;
- Activity 11 (iii);
- Activity 18 (i);
- Activity 22;
- Activity 23; and
- Activity 47.

The activity listed in GN. R 545 associated with the proposed project is Activity 6 (ii): The construction of facilities or infrastructure for the bulk transportation of dangerous goods – In liquid

WSP Environmental (Pty) Ltd
WSP House
Bryanston Place
199 Bryanston Drive
Bryanston, 2021
Tel: +27 (0)11 361 1380
Fax: +27 (0)11 361 1381
<http://www.wspenvironmental.co.za>
Reg. No: 1995/08790/07

WSP Group plc
Offices worldwide

form, outside an industrial complex, using pipelines, exceeding 1000 metres in length, with a throughput capacity of more than 50 cubic metres per day. Application for environmental authorisation for activities listed in GN. R 545 requires that a Scoping and EIA process be undertaken.

The proposed pipeline route will cross a watercourse at three locations, and a proposed pollution control dam will be constructed. The following water use activities listed under Chapter 4, Section 21 of the National Water Act (No. 38 of 1998) (NWA) are relevant and will require authorisation in the form of an amendment to the existing Integrated Water Use License (WUL):

- 21 (c): impeding or diverting the flow of water in a watercourse,
- 21 (i): altering the bed, banks, course or characteristics of a watercourse, and
- 21 (g): disposing of waste in a manner which may detrimentally impact on a water resource.

The proposed project is located in a mine lease area however, certain components fall on land not owned by the RPM. The RPM is required to undertake an Environmental Management Programme Report (EMPR) Amendment process in conjunction with the Environmental Impact Assessment (EIA) process, which is in line with the Minerals and Petroleum Resource Development Act (No 28 of 2002) (MPRDA) and the NEMA, respectively. The North West Department of Economic Development, Environment, Conservation and Tourism (NWDEDECT), the North West Department of Mineral Resources (DMR), and the Department of Water Affairs (DWA) will be responsible for authorising the NEMA EIA process, the EMPR Amendment and the Integrated WUL amendment process respectively.

A Public meeting will be held in order to outline the details of the project to stakeholders and provide an opportunity for stakeholders to raise questions and indicate potential issues or risks associated with the project. The Public Meeting will be held at the Tshukudu High School on Wednesday the 16th of January 2013 from 16:00pm to 17:30pm.

Should you wish to attend the Public Meeting, please respond to Jared O'Brien by 07 January 2013.

Should you wish to register as a stakeholder, please submit your details to Jared O'Brien.

Should you have any questions, please do not hesitate to contact the undersigned.

Regards,

A handwritten signature in black ink, appearing to read 'Jared O'Brien', is written over a horizontal line.

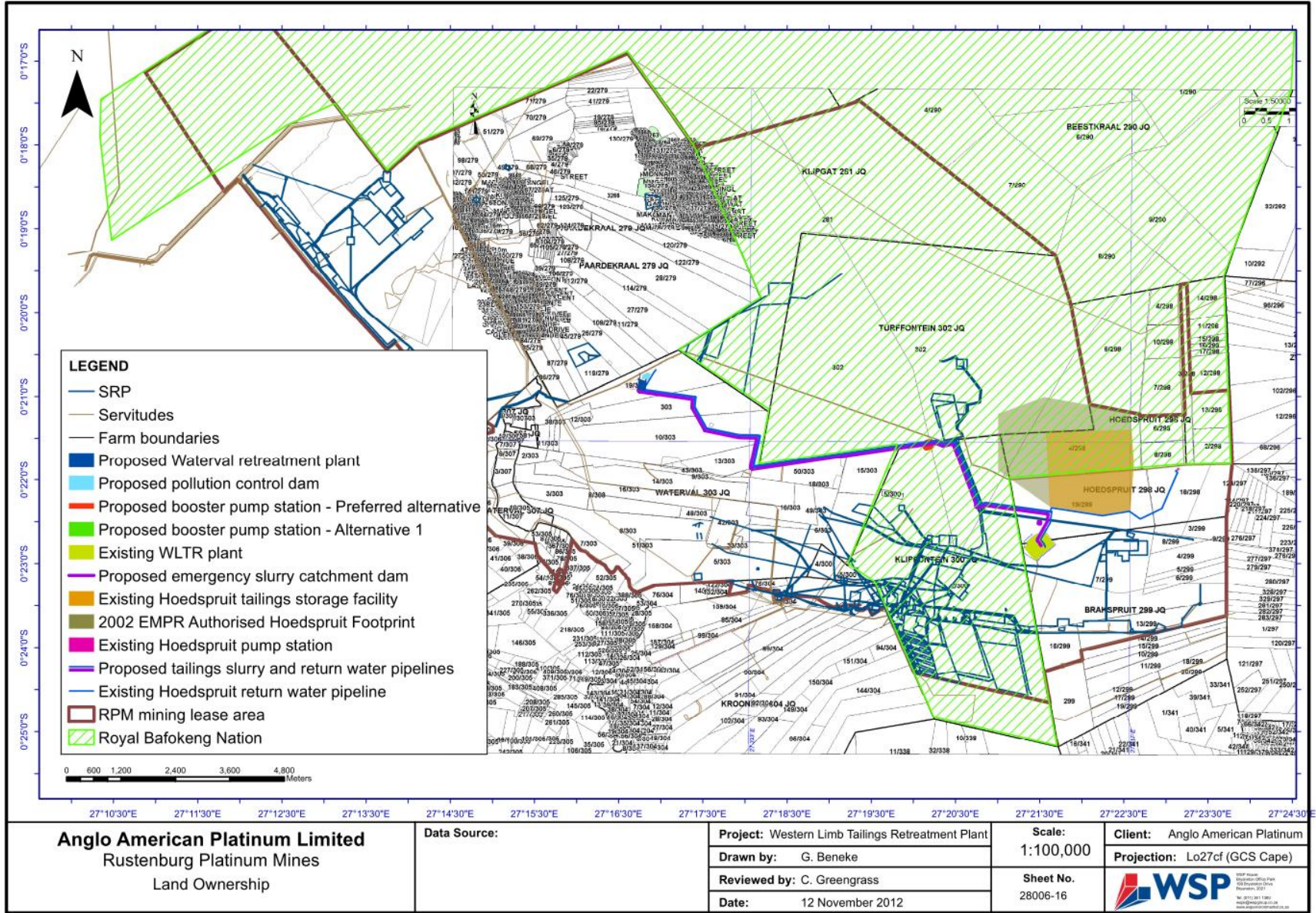
Jared O'Brien
Consultant

Tel: 011 361 1396

Fax: 086 505 3939

Email: Jared.O'Brien@wspgroup.co.za

Locality Map A



Environmental Authorisation Processes for the proposed Re-processing of Anglo American Platinum Waterval Tailings Storage Facilities located in Rustenburg, North West Province

Detailed Project Description

Anglo American Platinum Limited: Rustenburg Platinum Mines (RPM) mining operations are located in Rustenburg, in the North West Province. The Waterval Tailings Storage Facilities (TSFs), which are positioned in the RPM lease area, are located 4 km east of Rustenburg, 1.5 km west of Bokamoso, 3.5 km north of Waterkloof and 3.5 km south of Boitekong. The Waterval TSFs (East and West facilities) were previously used to deposit tailings material from mineral processing operations. Following tests conducted on the Waterval tailings, latent reserves have been identified that warrant the re-processing of the tailings. The re-processing of the Waterval TSFs was authorised by the Department of Minerals and Energy (now the Department of Mineral Resources) as part of an amendment to the existing Environmental Management Programme (EMPR) in 2002. Although authorised, the re-processing of the Waterval tailings has not yet commenced. Recent changes to proposed infrastructure and the layout of the project require the EMPR to be amended again. Additionally, some of the changes involve activities for which environmental authorisation from the North West Provincial Department of Economic Development, Environment, Conservation and Tourism (NWDEDECT) will be required.

The re-processing involves the use of hydraulic hoses, which sluice the face of the tailings. The resulting slurry collects in a sump via a system of drains or launders and into a collection sump. The West TSF will be processed in three benches, namely an upper, middle and lower bench, each 14 m, 12 m and 12 m in height respectively. The East TSF will be processed in two benches, an upper and lower bench, each being 12 m in height. The slurry will then be pumped (via a proposed pump station) through a proposed pipeline to the Western Limb Tailings Retreatment (WLTR) Plant. The project thus includes the proposed construction of a pipeline, a pre-treatment plant with a pump station, a booster station, a Pollution Control Dam and the installation of IsaMills™ within Mainstream Inert Grinding (MIG) applications.

A pre-treatment plant will be incorporated into the pump station, including a receiving facility, screening, surge tanks and thickeners, which are proposed to pre-treat the slurry before piping it to the WLTR Plant. The pre-treatment plant will also be used for water recovery prior to piping the slurry to the WLTR plant.

At the WLTR plant, the minerals contained in the tailings material will be extracted from the slurry. The WLTR Plant was initially constructed to re-treat tailings material from the Klipfontein TSF, which is located 6 km south east of the Waterval TSFs. The re-processing of the Klipfontein TSF is expected to reach completion in 2014, at which point the re-processing of the Waterval TSFs will be initiated.

The process, design and layout changes to the re-processing of the Waterval TSFs project include: a change to the location of the proposed pump station with the inclusion of a pre-treatment plant; the construction of at least one booster pump station along the pipeline, an amendment to the proposed pipeline route; the construction of a pollution control dam (PCD); and the addition of 4 IsaMills™ within Mainstream Inert Grinding (MIG) applications in the WLTR Plant facility. Refer to Locality Map A for a site location and proposed layout plan. The IsaMills will increase the efficiency of the WLTR by grinding the tailings material to a finer grade. The MIG Plants therefore increase the percentage of the precious metals and base metals that can be extracted from the tailings material.

WSP Environment and Energy (WSP) was appointed as the independent environmental assessment practitioner to undertake the environmental authorisation process for the project and to facilitate stakeholder engagement.

Purpose of this Document

This background information document (BID) introduces all stakeholders to the proposed project. This document forms part of the stakeholder consultation process, undertaken as a component of the environmental authorisation process and is intended to provide stakeholders with adequate information to comment on the project.

The BID details the project, the environmental authorisation process, the role of stakeholders in the process as well as to encourage stakeholders to comment on the project, ask questions and raise issues that should be included in the project documents. Aside from this document, at various stages of the environmental authorisation process, information and reports will be made available for stakeholders to comment on.

Legal framework

In accordance with National Environmental Management Act (No. 107 of 1998) as amended (NEMA) Environmental Impact Assessment Regulations (EIA) 2010, Government Notices (GNs) 544 and 545, the undertaking of certain listed activities requires environmental authorisation.

The activities listed in GN 544 associated with the proposed project include:

- Activity 9: The construction of facilities or infrastructure exceeding 1000 metres in length for the bulk transportation of water, sewerage or storm water-
 - I. With an internal diameter of 0.36 metres or more; or
 - II. With a peak throughput of 120 litres per second or more,
- Activity 10: The construction of facilities or infrastructure for the transmission and distribution of electricity (i) outside urban areas or industrial complexes with a capacity of more than 33 kV but less than 275 kV; or (ii) inside urban areas or industrial complexes with a capacity of 275 kV or more.
- Activity 11 (iii): The construction of bridges or infrastructure where such construction occurs within a watercourse or within 32 metres of a watercourse, measured from the edge of a watercourse, excluding where such construction will occur behind the development setback line.
- Activity 18 (i): The infilling or depositing of any material of more than 5 cubic metres into, or the dredging, excavation, removal or moving of soil, sand, shells, shell grit, pebbles or rock or more than 5 cubic metres from a watercourse;
- Activity 22: The construction of a road, outside urban areas,
 - I. With a road reserve wider than 13.5 metres or,
 - II. Where no reserve exists where the road is wider than 8 metres.
- Activity 23: The transformation of undeveloped, vacant or derelict land to-
 - I. Residential, retail, commercial, recreational, industrial or institutional use, inside an urban area, and where the total area to be transformed is 5 hectares or more, but less than 20 hectares, or
 - II. Residential, retail, commercial, recreational, industrial or institutional use, outside an urban area, and where the total area to be transformed is bigger than 1 hectare but less than 20 hectares.
- Activity 47: The widening of a road by more than 6 meters, or the lengthening of a road by more than 1 kilometre – (i) where the existing reserve is wider than 13.5 meters; or (ii) where no reserve exists, where the existing road is wider than 8 meters – excluding widening or lengthening occurring inside urban areas.

The activity listed in GN 544 associated with the proposed project is Activity 6 (ii): The construction of facilities or infrastructure for the bulk transportation of dangerous goods – In liquid form, outside an industrial complex, using pipelines, exceeding 1000 metres in length, with a throughput capacity of more than 50 cubic metres per day. Application for environmental authorisation for activities listed in GN 545 requires that a Scoping and EIA process be undertaken.

The proposed pipeline route will cross a watercourse, and a new proposed pollution control dam and an emergency slurry catchment dam will be constructed. The following water use activities listed under Chapter 4, Section 21 of the National Water Act (No. 38 of 1998) (NWA) are considered relevant and will require authorisation in the form of an amended to the existing Integrated Water Use Licence (WUL):

- 21 (c): impeding or diverting the flow of water in a watercourse
- 21 (i): altering the bed, banks, course or characteristics of a watercourse
- 21 (g): disposal (storage) of water containing waste.

The proposed project is located in a mine lease area however, certain components fall on land not owned by the RPM. The RPM is required to undertake an Environmental Impact Assessment Report and Environmental Management Programme Report (EMPR) Amendment process, in line with the Minerals and Petroleum Resource Development Act (No 28 of 2002) (MPRDA). The North West Department of Economic Development, Environment, Conservation and Tourism (NWDETECT), the North West Department of Mineral Resources (NWDMR), and the Department of Water Affairs (DWA) will be responsible for authorising the NEMA EIA process, the EMPR Amendment and the Integrated WUL amendment process respectively.

Stakeholder Consultation Process

The purpose of stakeholder engagement is to consult with interested and affected parties in the public and private sectors in the decision-making process on projects which may affect them. The process aims to develop and maintain open channels of communication between the project team and stakeholders. This process provides stakeholders with the opportunity to express their views and concerns regarding the proposed project through project correspondence. The environmental assessment practitioner documents the views and concerns of stakeholders, and makes the project team and relevant authority aware of issues that need to be considered during the compilation and evaluation of the potential risks and impacts associated with the project.

Who is a Stakeholder?

Any person, group of persons or organisation interested and/or affected by the proposed development.

To become a registered stakeholder and to receive further correspondence about the EIA/EMPR Amendment process, or to provide comment on the proposed project, kindly send your contact details and comments to Jared O'Brien:

Tel: 011 361 1396
Fax: 086 505 3939
Address: P.O. Box 5384, Rivonia, 2128
Email: Jared.O'Brien@wspgroup.co.za

A comment sheet has is attached to this document for your convenience.

Stakeholder Engagement

The first steps are to notify the public and identified stakeholders of the proposed project and invite all stakeholders to public meetings through the following mediums:

- Newspaper advertisements in the Daily Sun and Rustenburg Herald on 29 November 2012;
- Site notices in and around the project area on 28 November 2012;
- Written notification letters to surrounding landowners and municipal ward councillors on 28-29 November 2012; and
- Distribution of the BID to stakeholders 28 November 2012.

PUBLIC MEETING

A public meeting will be held in order to outline the details of the project to stakeholders and provide an opportunity for stakeholders to raise questions and indicate potential issues or risks associated with the project. The Public Meeting will be held at the Tshukudu High School on Wednesday the 16th of January 2013 from 16:00pm to 17:30pm.

Should you wish to attend one of the Public Meeting, please respond to Jared O'Brien by 07 January 2013.

Scoping Report and EIAR/EMPR Amendment Report for Public Review

A Scoping Report will be compiled in accordance with the NEMA and the MPRDA, and will outline the process that will be followed for stakeholder engagement and for EIA Phase of the project. This report describes the receiving environment and will list the potential impacts of the project as identified in the Scoping Phase. The report will indicate the specialist studies (including methodologies) that will be undertaken to investigate identified impacts. The draft Scoping Report will be placed on public and state department review for a period of 40 days prior to submission to the NWDETECT and the NWDMMR.

PUBLIC REVIEW OF SCOPING REPORT

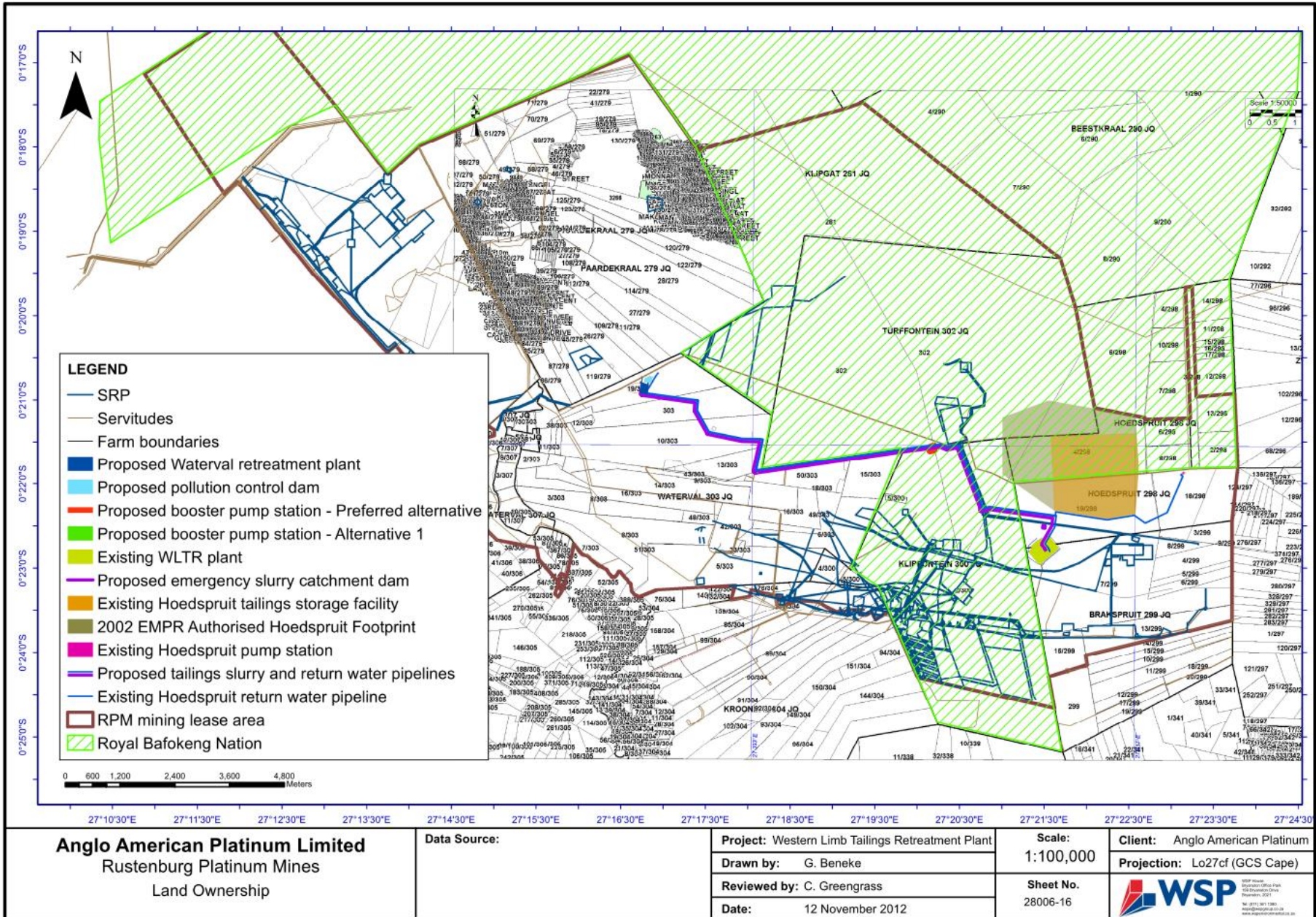
The Scoping Report will be made available for public review at the following venues from 29/11/2012 – 27/01/2013:

- Thekwane Tlhage Primary School;
 - Mfidike Primary School;
 - UG2 Concentrator Reception;
- Tlhabane Public Library in Rustenburg;
 - Rustenburg Local Municipality;
- Western Limb Tailings Retreatment Facility.

Subsequent to the Scoping Report, an EIAR/EMPR Amendment report will be compiled. This report will outline the stakeholder consultation process and include all comments or issues raised during the process. Additionally, the report will rate the anticipated impacts against a ratings table in order to assess the severity, duration, extent and significance of the impact, and include any cumulative impacts on the receiving environment. Mitigation measures will be developed in order to minimise negative impacts associated with the project. The draft EIAR/EMPR Amendment will also be placed on public and state department review for a period of 40 days prior to submission to the NWDETECT and the DMR.

Kindly register with Jared O'Brien in order to receive information about the location of the draft reports and review period via email, facsimile, telephone, registered mail and/or SMS. Any comments received will be addressed and included in the report prior to the final drafts being submitted to the responsible departments for review and authorisation.

Locality Map A



Tsamaiso ya Tumelelo ya Tikologo malebana le tshikhinyo ya go Epa gape Ditirelopolokelo tsa Masaedi a Waterval, tsa Anglo American Platinum tse di fithelwang kwa Rustenburg, mo Porofenseng ya Bokonebophirima

DOKHIUMENTETSHEDIMOSETSO YA LEMORAGO

Tlhaloso ka botlalo ya Porojeke

Anglo American Platinum Limited: Rustenburg Platinum Mines (RPM) e fithelwa gaufi le Rustenburg, mo Porofenseng ya Bokonebophirima. Ditirelopolokelo tsa Waterval Tailings (diTSF), tse di fithelwang mo karolong ya khiri ya RPM, di fithelwa 4 km kwa botlhaba jwa Rustenburg, 1.5 km kwa Bophirima jwa Bokamoso, 3.5 km kwa bokone jwa Waterkloof le 3.5 km kwa borwa jwa Boitekong. Kwa tshimologong diTSF tsa Waterval (Ditirelo tsa Botlhaba le Bophirima) di ne di dirisediwa go boloka masaedi go tswa go ditiro tsa tsewetso ya diminerale. Morago ga diteko tse di dirilweng ka ga masaedi a Waterval, go lemogilwe dirasefe tse di leng teng, tse di tlhotlheleditseng gore go epiwe gape masaedi a.

Go epiwa sešwa ga diTSF go rebotswe ke Lefapha la Diminerale le Maatla (le gajaana le bidiwang Lefapha la Ditlamelwa tsa Diminerale), e le karolo ya tlhabololo ya Lenaneo la gajaana la Taolo ya Tikologo (EMPR), ka ngwaga wa 2002. Le fa go rebotswe, go epiwa gape ga masaedi a Waterval ga go ise go simolole. Diphetogo tsa gajaana malebana le dithulaganyetso tse di tshikhinngwang mmogo le bonamo jwa porojeke di tlhoka gore EMPR e tlhabololwe gape. Go feta fa, diphetogo dingwe di akaretsa ditiragalo tse di tlhokang thebolo ya tsa tikologo go tswa go Lefapha la Ikonomi le Tlhabololo, Tikologo, Pabalelo le Bojanala, la Porofense ya Bokonebophirima (NWDEDECT).

Tsamaiso ya go epa gape e akaretsa tiriso ya megogoma ya haederoliki, e e tlholang 'morwalela' wa seela godimo ga masaedi a. Diela tse di epa meselo mme di kokoanela mo megobeng. TSF ya Bophirima e tla epiwa ka dikgato di le tharo, e bong kgato ya godimo, ya magareng le ya tlase, nngwe le nngwe e le bogodimo jwa 14 m, 12 m le 12 m ka tatelano eo. TSF ya Botlhaba e tla epiwa ka dikgato di le pedi, kgato ya godimo le ya tlase, nngwe le nngwe e le bogodimo jwa 12 m. Seela se tla pompiwa (ka tiriso ya seteišene se se tshikhinngwang sa pompo), ka moselo wa peipi o o tshikhinngwang go ya kwa Polanteng ya Western Limb Tailings Retreatment (WLTR). Ka jalo porojeke e e akaretsa kago e e tshikhinngwang ya mogogoma. seteišene sa go pompela, polante e e baakanngwang, seteišene sa busetara, Tamo ya Talo ya Kgotlelego mmogo le tlhomo ya The IsaMills™ mo tirisong ya " Mainstream Inert Grinding (MIG)".

Polante ya paakanyetso e tla akarediwa le seteišene sa pompo, go akarediwa le tirelokamogelo, kanoko, ditanka tsa kgogomogo le digogomosi, tse di tshikhinngwang gore di baakanyetse seela pele se pompelwa mo polanteng ya WLTR.

Kwa planting ya WLTR, diminerale tse di mo dilwaneng tsa masaleding di tla ntshiwa mo seeleng. Kwa tshimologong polante ya WLTR e ne e agetswe go baakanyetsa dilwana tsa masaedi go tswa go TSF ya Klipfontein, e e leng 6 km kwa borwabolthaba jwa diTSF tsa Waterval. Go epiwa gape ga TSF ya Klipfontein go lebeletswe go konosediswa ka 2014, fa go tla bong go simololwa go epiwa gape ga diTSF tsa Waterval.

Diphetogo tsa tiragatso e, tlhamo le boalo tsa go epiwa gape ga porojeke ya diTSF tsa Waterval di akaretsa: phetolo ya lefelo la seteišene se se tshikhinngwang sa pompo, go akarediwa le polante ya paakanyetso; kago ya seteišenetso sololoso se le sengwe go bapa le moselo wa peipe, phetogo ya tsela ya moselo wa peipe; kago ya tamo ya taolo ya kgotlelego (PCD); le koketso ya 4 IsaMills™ mo tirelong ya tshilo e e emeng (MIG) ya polante ya WLTR. Tihola Mmapa wa Selegae wa A malebana le lefelo la setsha le thulaganyo ya boalo. IsaMills e tla godisa bokgoni jwa WLTR ka go sila dilwana tsa masaedi gore di nne boleng jo bo tlhotlha. Ka jalo Dipolante tsa MIG di oketsa peresente ya metale e e ka ntshiwang go dilwana tsa masaedi.

WSP Environment & Energy (WSP) e tlhophilwe go nna modiredi yo o ikemetseng wa tlhatlhobo ya tikologo go diragatsa thebolo ya porojeke le go tsamaisa botsayakarolo jwa beng.

Maikaelelo ka Dokhumente e

Dokhumente e ya tshedimosetso ya lemorago (BID) e itsise beng botlhe ka ga porojeke e e tshikhinngwang. Dokhumente e ke karolo ya tiragatso ya therisano le beng, e le karolo ya tsamaiso ya thebolo ya tikologo, mme maikaelelo ka ga yona ke go neela beng tshedimosetso e e lekanetseng gore ba kgone go tshwaela malebana le porojeke.

BID e neela dintlha tsa porojeke ka botlalo, tsamaiso ya thebolo ya tikologo, mmogo le seabe sa beng mo tsamaisong e, le go rotloetsa beng go tshwaela malebana le porojeke, le go botsa dipotso kgotsa go neela dintlha tse di tshwanetseng go akarediwa mo didokhumenteng tsa porojeke. Kwantle ga dokhumente e, go ya go neelwa tshedimosetso le dipegelo mo tsamaong ya dikgato tse di farologaneng tsa porojeke, malebana le tsamaiso ya thebolo ya tikologo, gore beng ba tshwaele.

Letlhomiso la semolao

Go ya ka Molaotlhomiso wa Naga wa Taolo ya Tikologo (No. 107 wa 1998) o o tshabotsweng (NEMA), Melawana ya Tlhatlhubo ya Seabe sa Tikologo (EIA) 2010, Dikitsiso tsa Puso (GNs) 544 le 545, ditiragatso tsa ditiro dingwe tse di naneofaditsweng di tlhoka thebolo ya tsa tikologo.

Ditiragatso tse di naneofaditsweng mo go GN 544 tse di amanang le porojeke e e tshikhinngwang di akaretsa:

- Tiro ya 9: Kago ya ditlamelwa kgotsa dithulaganyetso tse di fetang dimetara di le 1000 ka bolelele malebana le go roriwa ga mothamo o mogolo wa -metsi, leswe le metsi a morwalela
 - I. Ka daemetha ya bogare ya dimetara di le 0.36 kgotsa go feta; kgotsa
 - II. Ka lebelolegolo la dilitara di le 120 kgotsa go feta ka motsotswana.
- Tiro ya 10: Kago ya ditlamelwa kgotsabdithulaganyetso malebana le tsamaiso le phatlalatsa ya motlakase (i) ka fa ntle ga metsesetoropo kgotsa dikago tsa difaboriki tsa tekanyetso ya go feta 33 kV mme e le kwa tlase ga 275 kV; kgotsa (ii) mo metsesetoropong kgotsa difaboriking ka mothamo wa 275 kV kgotsa go feta.
- Tiro ya 11 (iii) ; Kago ya marogo kgotsa dithulaganyetso fao e leng gore kago e e diragala dimetara di le 32 gaufi le moedi, go lekanyetswa go tswa losing lwa moedi, kwantle ga fa kago e dirwa ka fa morago ga mola wa leparego lengwe.
- Tiro ya 18 (i): Go tsengwa kgotsa go tlaletswa ga dilwana tsa dikhiubiki tsa dimetara di le 5, kgotsa go epololwa le fa e le go tloswa ga mmu, santa, dikgetla matlapana kgotsa matlapa a go feta dikhiubiki tsa dimetara di le 5 go tswa bobolokelong;.
- Tiro ya 22: Kago ya tsela, ka fa ntle ga metsesetoropo, Activity 22:
 - I. Fao tsela e fetang bophara jwa dimetara di le 13.5 kgotsa,
 - II. Fao go seng rasefe mo tsela e leng bophara bo fetang dimetara di le 8.
- Tiro ya 23: Tlhabololo ya naga e e sa tlhabologang, le le lolea, go nna-
 - I. Felo ga bodulo, ga kgwebo, ga boitapoloso kgotsa ga difaboriki kgotsa ditheo, mo metsesetoropong, fao lefelo le le tlhabololang le leng bogolo jwa diheketara di le 5 kgotsa go feta, mme le le ka fa tlase ga diheketara di le 20, kgotsa
 - II. Tiriso ya lefelo ka bodulo, kgwebo, boitapoloso, difaboriki kgotsa ditheo, ka fa ntle ga metsesetoropo, fao lefelo le le tlhabololang le leng legolo go heketara mme le le ka fa tlase ga diheketara di le 20.
- Tiro ya 47: Gooketsa bophara jwa tsela ka dimetara di feta 6, kgotsa go e leelefatsa ka go feta kilometara - (i) fao rasefe e e leng teng e leng bophara jo bo fetang dimetara di le 13.5; kgotsa (ii) fao go se nang rasefe, mme tsela e e leng teng e le bophara jo bo fetang dimetara di le 8 – kwantle ga fa koketso ya bophar kgotsa bolelele e diragala ka fag are ga metsesetoropo.

Tiro e e boletsweng mo go GN 544 e e golaganang le porojeke e e tshikhinngwang ke Tiro ya 6 (ii): go agiwa ga ditlamelwa kgotsa dithulaganyetso malebana le go roriwa ga bontsi jwa dilwana tse di kotsi – e le diela, ka fa ntle ga madirelo a faboriki, go dirisiwa dipeipi tsa bolelele jo bo fetang dimetara di le 1000, ka mothamo wa dikhiubiki tsa dimetara di le 50 ka letsatsi. Kopo ya thebolo ya tikologo ya ditiro tse di naneofaditsweng mo go GN 545 e tlhoka gore tsamaiso ya Scoping le EIA e diragadiwe.

Tsela e e tshikhinngwang ya metato ya dipeipi e tla kgabaganya moedi, mme tamo e ntšhwa e e tshikhinngwang ya taolo ya kgotlelego mmogo le bodutisotshoganyetso jwa diela di tla agiwa. Ditiriso tsa metsi tse di latelang, tse di neetsweng mo go Kgaolo 4, Karolo 21 ya Molaotlhomiso wa Naga wa wa Metsi (No. 38 wa 1998) (NWA), di ka nna maleba mme di ka tlhoka thebolokakaretso kgotsa Laesense e ntšhwa/e e tlhabotsweng ya tiriso ya metsi (WUL):

- 21 (b): bobolokelo jwa metsi,
- 21 (c): kganelo kgotsa phaposo ya kelo ya metsi mo moeding,
- 21 (i): phetolo ya losi kgotsa mabopo a moedi.

Porojeke e e tshikhinngwang e fitlhelwa mo karolokhiring ya mmaene, le Fa golejalo karolo dinngwe tsa lofase ha se tsa RPM. RPM e lebeleletse gone e kwale Pegelo ya Tlhatlhubo ya Seabe go Tikologo mmogo le Pegelo ya Lenaneo la Taolo ya Tikologo (EMPR) tsamaiso e e fetotsweng, go ya ka Molaotlhomiso wa Tlhabololo ya Ditlamelwa tsa Peteroliamo le Diminerale (no. 28 wa 2002) (MPRDA). Lefapha la Ikonomi le Tlhabololo, Tikologo, Pabalelo le Bojanal la Porofense ya Bokonebophirima (NWDEDECT), Lefapha la Ditlamelwa tsa Diminerale la Bokonebophirima (NWDMMR), mmogo le Lefapha la Ditirelo tsa Metsi (DWA) a tla rwala boikarabelo jwa go rebola tsamaiso ya NEMA EIA, Tlhabololo ya EMPR mmogo le WUL ka tatelano eo.

Tsamaiso ya therisano ya beng

Maikaelelo ka go akaretsa le beng ke go rerisana le ditokololo tse di amegangmo maphateng a botlhe le a poraefete malebana le tsamaiso ya go tsaya tshwetso malebana le diporojeke tse dib a amang. Tsamaiso e e ikaelela go godisa le go tshola tlhaeletsano magareng a setlhophsa sa porojeke le beng. Tsamaiso e e neela beng tšhono ya go tlhagisa dikakanyo le tshwenyego ya bona malebana le porojeke e e tshikhinngwang ka mosele wa tlhaeletsano. Modiredi wa tlhatlhobo ya tikologo o kwala dikakanyo le tshwenyego ya beng, mme o tsibosa setlhophsa sa porojeke mmogo le bathati ba ba maleba malebana le dintlha tse di tlhokang go tsewa tsia ka nako ya kokoanyo ya dintlha tsa kotsi le seabe tse di amanang le porojeke.

Beng ke bomang?

Mongwe fela, kgotsa setlhophsa sa batho le fa e le mokgatlho o o nang le kgatlhego kgotsa o amega mo tlhabololong e e tshikhinngwang.

Go nna mong yo o ikwaditseng le go amogela tlhaeletsano ka ga tsamaiso ya Tlhabololo ya EIA/EMPR, kgotsa go tshwaela malebana le porojeke e e tshikhinngwang, tsweetswee romela dintlha tsa gago tsa tlhaeletsano le tshwaelo ya gago go Jared O'Brien:

Tel: 011 361 1396
Fax: 086 505 3939
Address: P.O. Box 5384, Rivonia, 2128
Email: Jared.O'Brien@wspgroup.co.za

Papetlana ya ditshwaelo e mametleletswe mo dokhumenteng e go go thusa.

Botsaakarolo jwa Beng

Kgato ya ntlha ke go itsise morafe le beng ba ba lemogilweng, malebana le porojeke e e tshikhinngwang, le go laletsa beng botlhe pitso, ka meselo e e latelang:

- Papatso ya kuranta mo go Daily Sun le Rustenburg Herald ka la 29 Ngwanatsele 2012;
- Dikitsiso mo setsheng le mo karolong ya porojeke ka la 28 Ngwanatsele 2012;
- Makwalokitsiso go benglefatsho ba ba mabapi le bakhanselara ka la 28-29 Ngwanatsele 2012; le
- Phasalatso ya BID go beng ka la 28 Ngwanatsele 2012.

DIPITSO TSA BOTLHE

Dipitso tsa botlhe di tshwarwa go tlhalosetsa beng diteng tsa porojeke le go ba neela tšhono ya go botsa dipitso le go supa dintlha le kotsi tse di tsamaelanang le porojeke. Ka jalo beng ba biletswa pitsong e:

- Sekolo se segole sa Tshukudu (16/01/2013, 16:00pm - 17:30pm)

Fa o tlhoka kaelotsela go ya go lengwe la mafelo a, tsweetswee romela kopo go Jared O'Brien (07/01/2013).

Pegelo ya Bonamo le pegelo ya Paakanyo ya EIAR/EMPR go thadiswa ke morafe

Pegelo ya bonamo e tla kokoangwa go ya ka NEMA le MPRDA, mme e tla tlhalosa tsamaiso e e tla latelwang malebana le seabe sa beng mo Kgatong ya EIA ya porojeke. Pegelo e, e tlhalosa tikologokamogelo mme e tla neela lenaneo la seabe sa diporojeke jaaka se lemogilwe mo kgatong ya Bonamo. Pegelo e tla supa tshokatsheko ya baitseanape (go akarediwa mekgwatshekatsheko), e e tla dirwang go batlisisa seabe se se lemogilweng. Pegelothomo ya Bonamo e tla neelwa morafe le mafapha a puso malatsi a le 40 pele e ka neelwa NWDEDECT le NWDMMR.

TTHADISO YA MORAFE YA PEGELO YA BONAMO

Dikhophi tsa Pegelo ya Bonamo di tla neelwa morafe kwa mafelong a a latelang go simolola ka la 29/11/2012 – 27/01/2012:

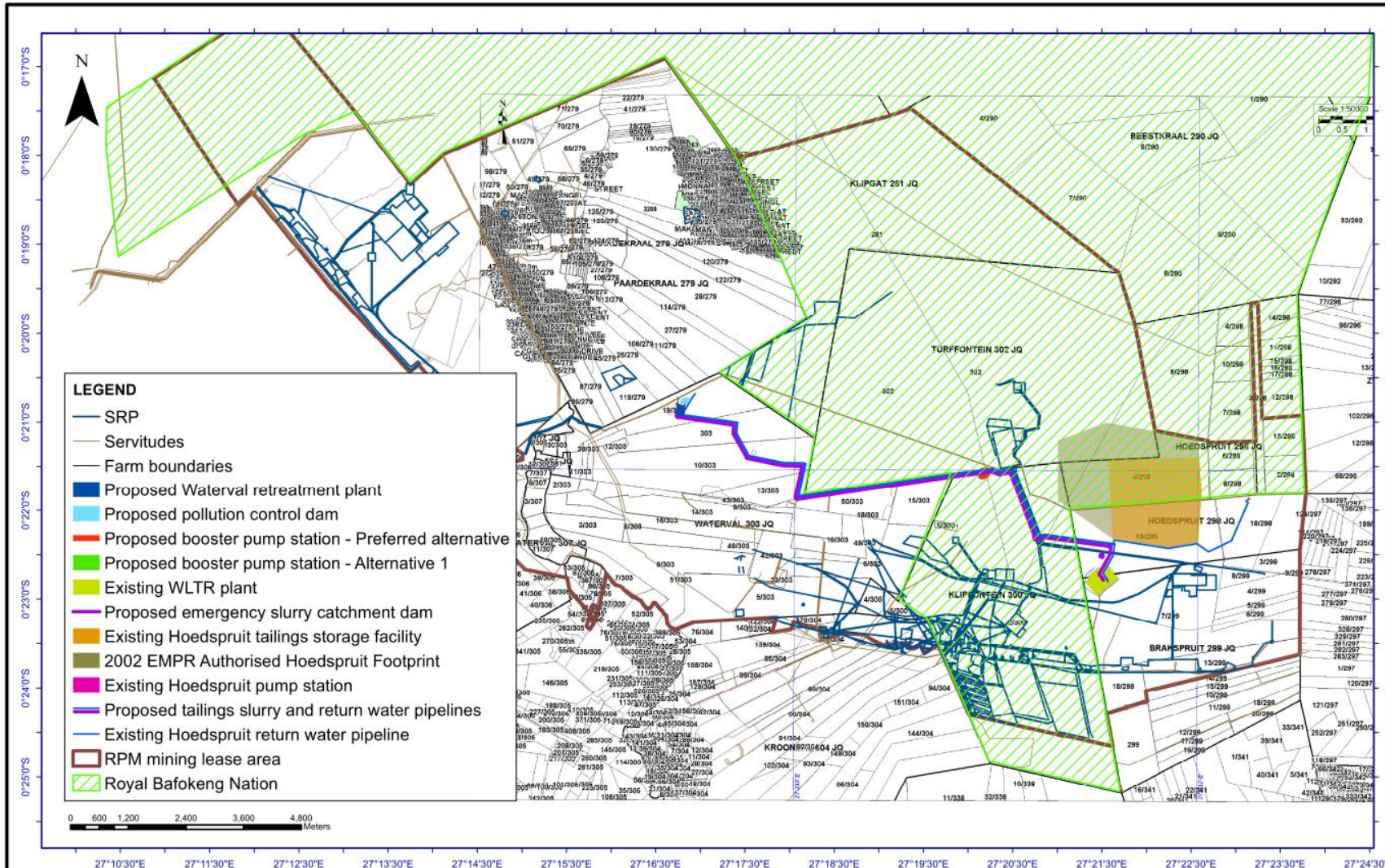
- Sekolopotlana sa Thekwane Tlhage;
- Sekolopotlana sa Mfidike;
- Kantorong ya kamogelo ya UG2 Concentrator;
- Tlhabane Librarya ya botlhe, Rustenburg;
- Rustenburg Masepala wa selegae;
- Ditabakelo tsa Bophiriwa Limb Tailings Retreatment Facility.

Fa o tlhoka kaelotsela go ya go lengwe la mafelo a, tsweetswee romela kopo go Jared O'Brien.

Morago ga Pegelo ya Bonamo, pegelo e e Baakantsweng ya EIAR/EMPR e tla kokoangwa. Pegelo e, e tla tlhalosa tsamaiso ya kgokagano le beng mme e tla akaresa ditshwaelo tsotho kgotsa dintlha tse di runseng ka nako ya tsamaiso e. Go feta fa, pegelo e tla leba kelo ya khuetso kgatlanong le papetla ya kelo ka maikaelelo a go tlhatlhoba mothamo, paka le boleng jwa khuetso, mme e tla akaretsa khuetso yotlho go tikologo e e amogelang. Dikgato tsa go timola bogale di tla tsewa go fokotsa seabe sa bosula malebana le porojeke. Paakanyothomo ya EIAR/EMPR e tla itsisiwe morafe le mafapha a puso go e thadisa malatsi a le 40 pele e neelwa NWDEDECT le DMR.

Tsweetswee ikwadise le Jared O'Brien gore o kgone go amogela tshedimosetso malebana le mafelo a dipegelo le paka ya thadiso ka imeile, fekese, mogala, poso kgotsa /le SMS. Ditshwaelo tsotho tse di amagelwang di tla lejwa le go akarediwa mo pegelong pele pegelothomo ya bofelo e neelwa mafapha a a maleba go thadisiwa le go rebolwa.

Mmapa wa Lefelo A



Anglo American Platinum Limited Rustenburg Platinum Mines Land Ownership	Data Source:	Project: Western Limb Tailings Retreatment Plant	Scale: 1:100,000	Client: Anglo American Platinum
		Drawn by: G. Beneke	Sheet No. 28006-16	Projection: Lo27cf (GCS Cape)
		Reviewed by: C. Greengrass		
		Date: 12 November 2012		

