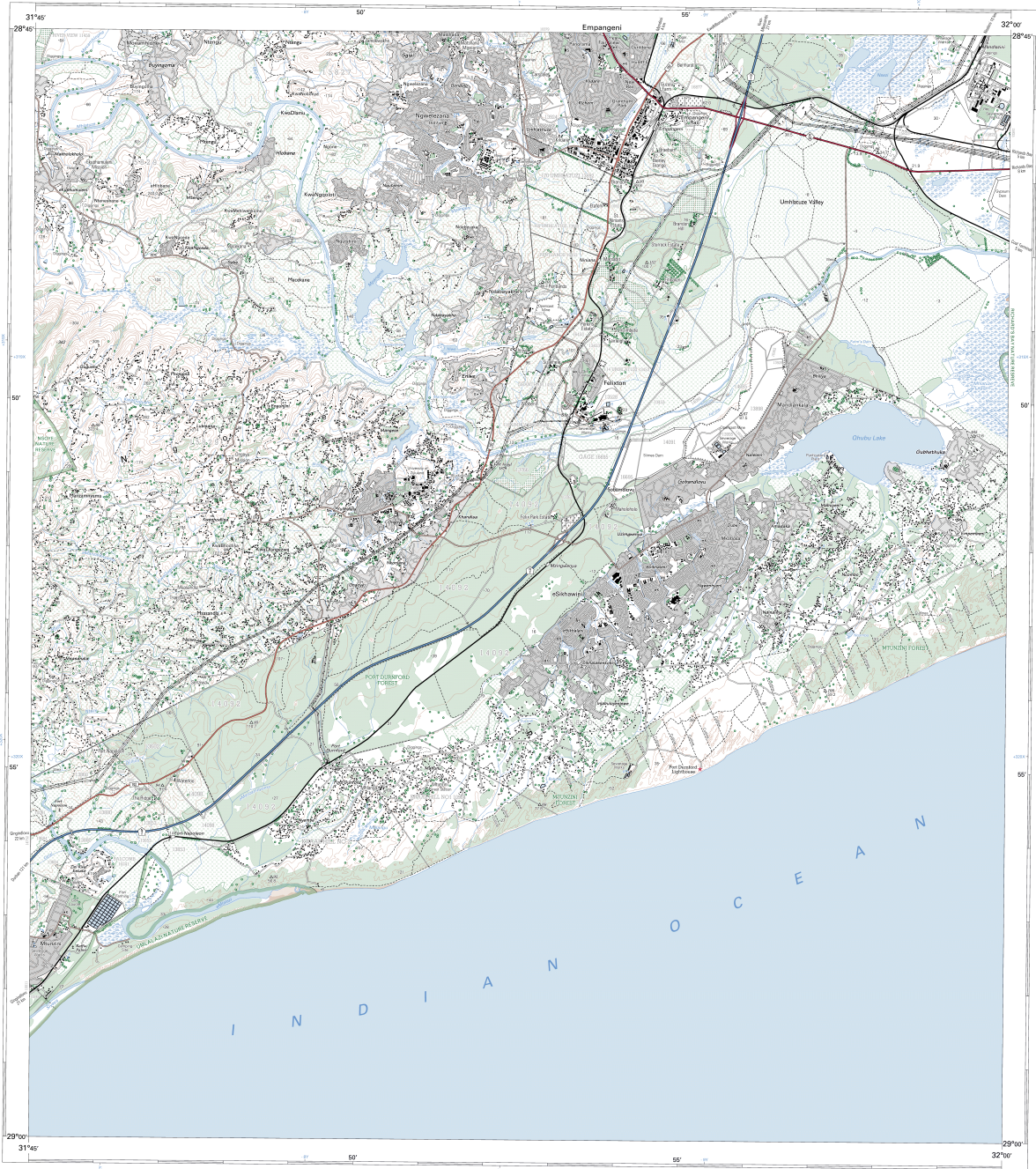




2831DD FELIXTON

1:50 000 SOUTH AFRICA
SUID-AFRIKA



Published by the Chief Development, National Geo-spatial Information, Private Bag 910, Mowbray
Copyright © 2013, State Information Systems of South Africa
This map may not be reproduced or transmitted in any form or by any means, electronic, mechanical, photocopying, recording, or by any information storage and retrieval system, without prior permission from the State Information Systems of South Africa.

REFERENCE	VERKLARING
National Boundary	Nasionale Grens
Province Boundary	Provinsiale Grens
Local Government Boundary	Plaaslike Owerheidsgrens
Water	Water
...	...

Map Accuracy (Distribution 2013) (West of True North July 2013).
 Mean annual range of fluctuations (July 2013 - June 2017).
 Maximum range of fluctuations (July 2013 - June 2017).
 Minimum range of fluctuations (July 2013 - June 2017).
 Vertical datum: "NAD 83 National Geospatial Data Centre".

INDEX TO SHEETS / **INDIENSAANWYSEL**

2831A	2831B	2831C
2831D	2831E	2831F
2831G	2831H	2831I

The grid lines of the South African Geospatial System are indicated in the image by a black line every 10 000 metres. All the values are rounded to the nearest 10 000 metres.
 The grid lines of the adjacent sheets are indicated in the image by a dashed line every 10 000 metres.
 The grid lines of the adjacent sheets are indicated in the image by a dashed line every 10 000 metres.
 The grid lines of the adjacent sheets are indicated in the image by a dashed line every 10 000 metres.

REFERENCE	VERKLARING
International Boundary	Internasionale Grens
Province Boundary	Provinsiale Grens
Local Government Boundary	Plaaslike Owerheidsgrens
Water	Water
...	...

2831DD FELIXTON 1:50 000 2013



Data for this map extracted on 06/07/2016.



2831DD FELIXTON BLACK
 2831DD FELIXTON BLUE
 2831DD FELIXTON BROWN
 2831DD FELIXTON GREEN
 2831DD FELIXTON RED