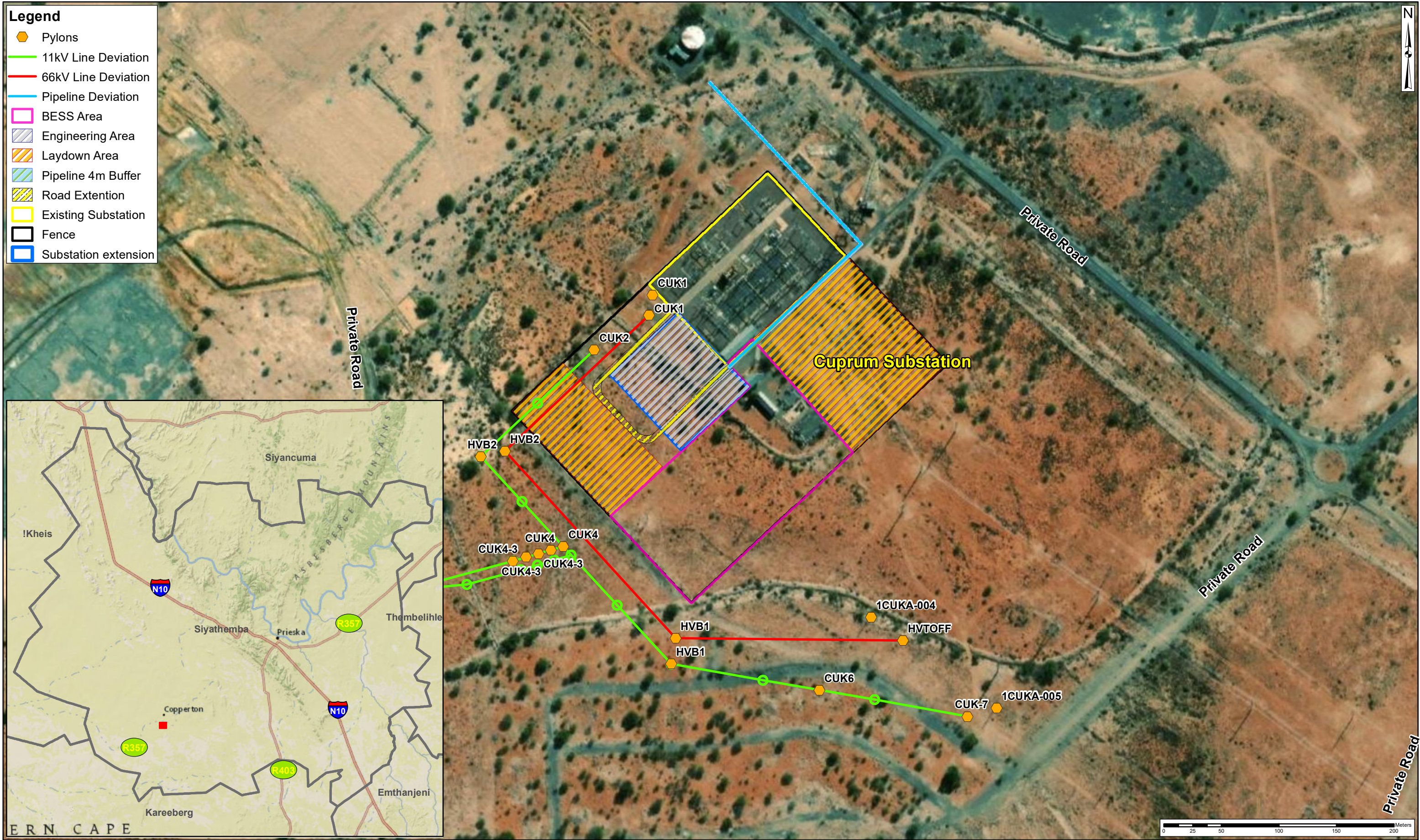


- Legend**
- Pylons
 - 11kV Line Deviation
 - 66kV Line Deviation
 - Pipeline Deviation
 - BESS Area
 - Engineering Area
 - Laydown Area
 - Pipeline 4m Buffer
 - Road Extension
 - Existing Substation
 - Fence
 - Substation extension



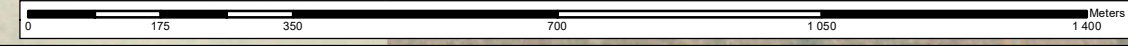
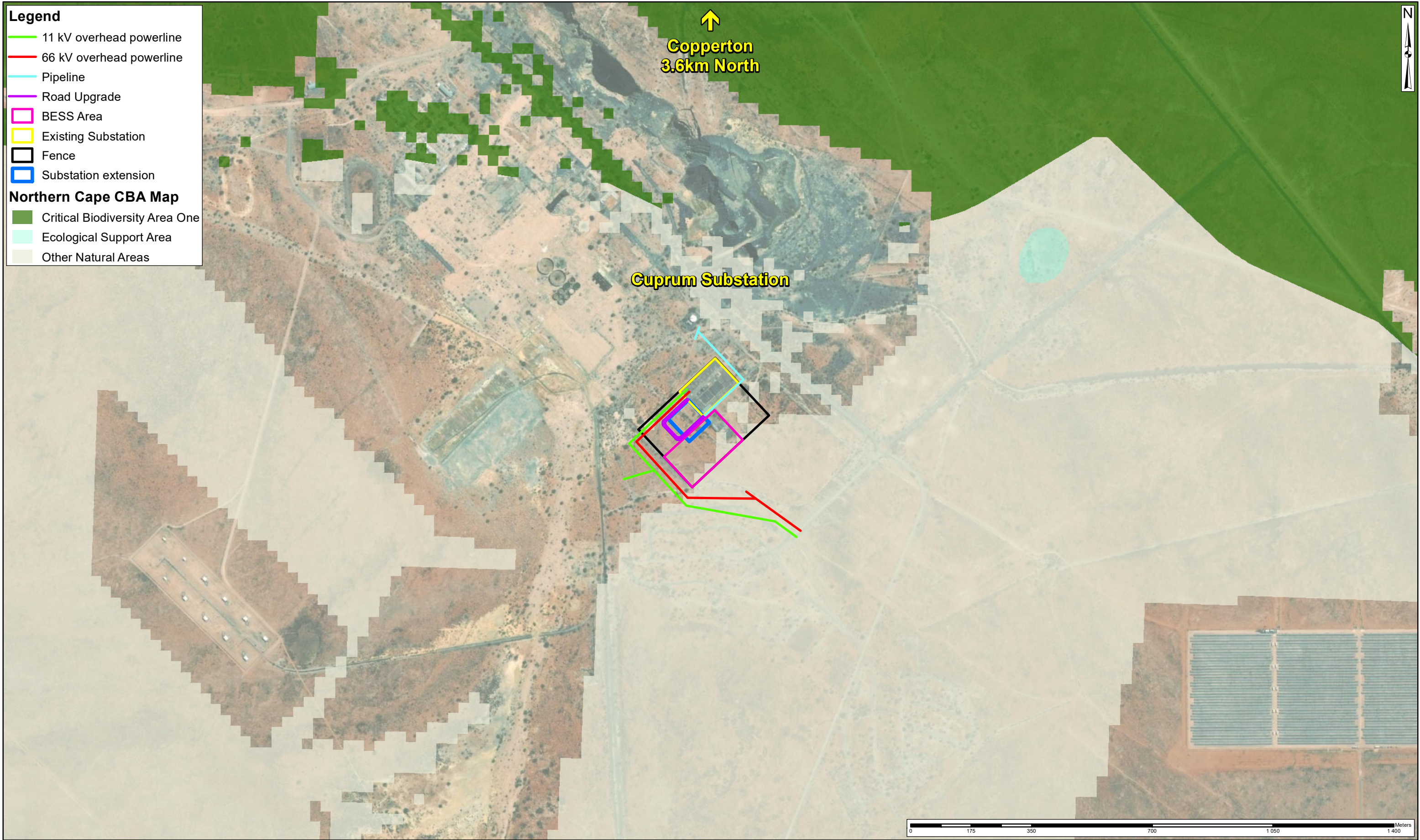
Project Title:	Eskom Battery Energy Storage System (BESS): Basic Assessment	Scale 1:3 000 <small>(When page size is: A3 landscape)</small>	Figure 1
	Siyathemaba Local Municipality, Northern Cape Province	Projection: Transverse Mercator Datum: Hartbeesthoek 1994 Central Meridian: 23.0	Sources: Source: Esri, Maxar, GeoEye, Earthstar Geographics, CNES/Airbus DS, USDA, USGS, AeroGRID, IGN, and the GIS User Community Esri, HERE, Garmin, (c) OpenStreetMap contributors National Geographic, Esri, Garmin, HERE, UNEP-WCMC, USGS, NASA, ESA, METI, NRCAN, GEBCO, NOAA, increment P Corp.
Map Title:	Locality Map	Compiled By: GA Maree GIS QC By: D Govender	
<small>Whilst every care has been taken in compiling the information on this map, AECOM cannot accept responsibility for any inaccuracies.</small>		Date Saved: 2022/11/15 Project Number: 60657237	
<small>© Copyright</small>		Map Ref: LocalityPlan4.mxd Revision: 00	
AECOM		<small>L:\Legacy\GISData\7_Projects\60657237_EskomBESS_Prieska\mxd\LocalityPlan4.mxd</small>	

Legend

- 11 kV overhead powerline
- 66 kV overhead powerline
- Pipeline
- Road Upgrade
- BESS Area
- Existing Substation
- Fence
- Substation extension

Northern Cape CBA Map

- Critical Biodiversity Area One
- Ecological Support Area
- Other Natural Areas



Project Title:	Eskom Battery Energy Storage System (BESS): Basic Assessment	Scale 1:10 000 <small>(When page size is: A3 landscape)</small>	Figure 2
Map Title:	Critical Biodiversity Areas	Projection: Transverse Mercator Datum: Hartbeesthoek 1994 Central Meridian: 23.0 Compiled By: GA Maree	Sources: Source: Esri, Maxar, GeoEye, Earthstar Geographics, CNES/Airbus DS, USDA, USGS, AeroGRID, IGN, and the GIS User Community National Geographic, Esri, Garmin, HERE, UNEP-WCMC, USGS, NASA, ESA, METI, NRCAN, GEBCO, NOAA, increment P Corp.
<small>Whilst every care has been taken in compiling the information on this map, AECOM cannot accept responsibility for any inaccuracies.</small>		GIS QC By: Date Saved: 2021/06/30 Project Number: 60657237 Map Ref: CBA.mxd Revision: 00	
		<small>L:\Legacy\GISData\7_Projects\60657237_EskomBESS_Prieska\mxd\ICBA.mxd</small>	

Legend

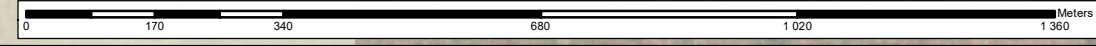
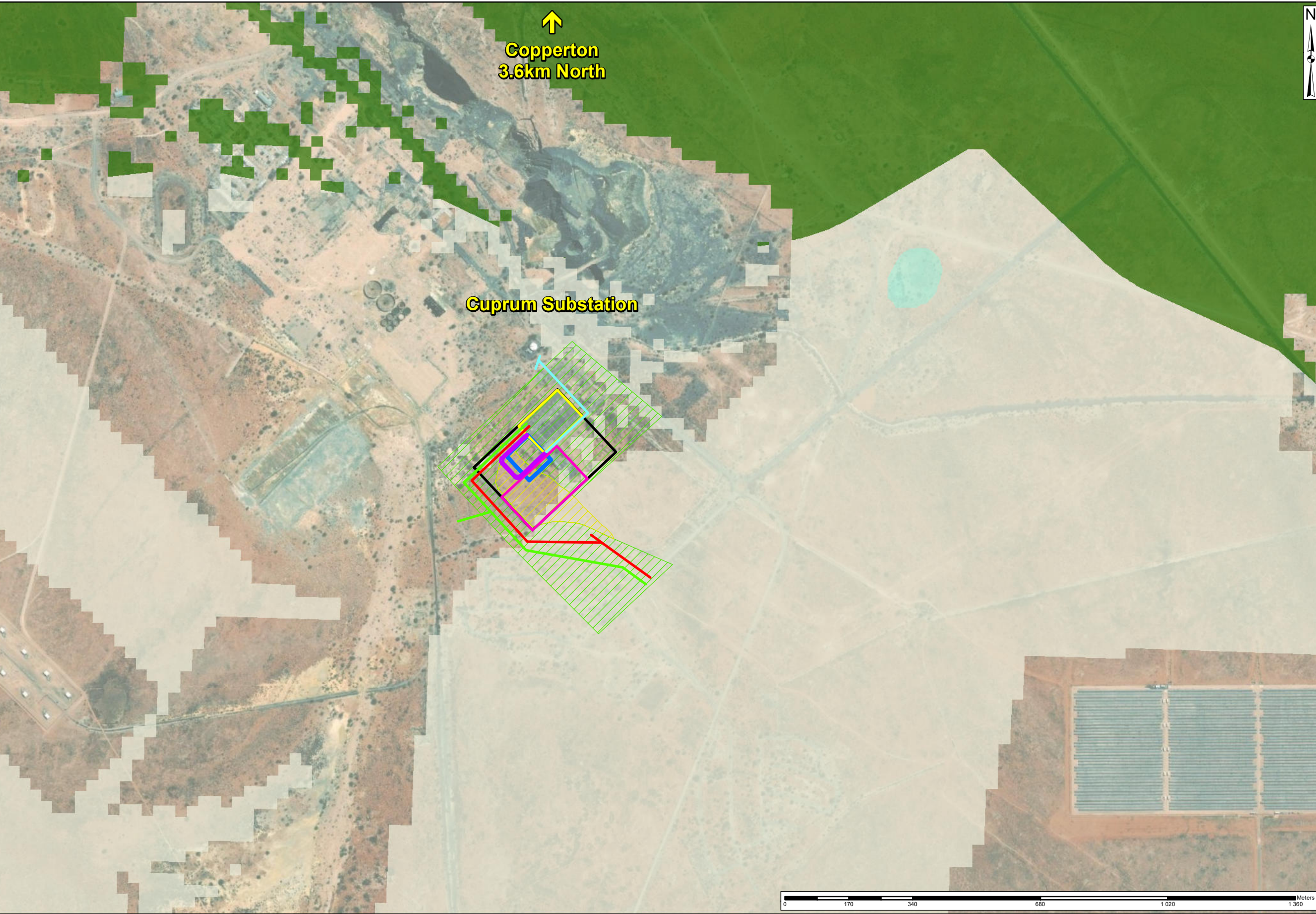
- 11 kV overhead powerline
- 66 kV overhead powerline
- Pipeline
- Road Upgrade
- BESS Area
- Existing Substation
- Fence
- Substation extension

Combined Sensitivity

- Medium-low
- Low

Northern Cape CBA Map

- Critical Biodiversity Area One
- Ecological Support Area
- Other Natural Areas



Project Title:	Eskom Battery Energy Storage System (BESS): Basic Assessment	Scale 1:10 000 <small>(When page size is: A3 landscape)</small>	Figure 2
Map Title:	Composite Sensitivity Map	Projection: Transverse Mercator Datum: Hartbeesthoek 1994 Central Meridian: 23.0 Compiled By: GA Maree GIS QC By: Date Saved: 2021/08/06 Project Number: 60657237 Map Ref: Sensitivity.mxd Revision: 00	Sources: Source: Esri, Maxar, GeoEye, Earthstar Geographics, CNES/Airbus DS, USDA, USGS, AeroGRID, IGN, and the GIS User Community National Geographic, Esri, Garmin, HERE, UNEP-WCMC, USGS, NASA, ESA, METI, NRCAN, GEBCO, NOAA, increment P Corp.
<small>Whilst every care has been taken in compiling the information on this map, AECOM cannot accept responsibility for any inaccuracies.</small>		<small>© Copyright</small>	
		<small>L:\Legacy\GISData\7_Projects\60657237_EskomBESS_Prieska\mxd\Sensitivity.mxd</small>	