

Appendix K

DFFE SCREENING TOOL REPORTS



**SCREENING REPORT FOR AN ENVIRONMENTAL AUTHORIZATION AS
REQUIRED BY THE 2014 EIA REGULATIONS – PROPOSED SITE
ENVIRONMENTAL SENSITIVITY**

EIA Reference number: 14/12/16/3/3/2/2243

Project name: Dalmanutha Wind and Solar Facility(up to 300MW)

Project title: Dalmanutha Wind and Solar Facility(up to 300MW)

Date screening report generated: 21/04/2023 15:44:49

Applicant: Enertrag SA

Compiler: WSP Africa

Compiler signature:
.....

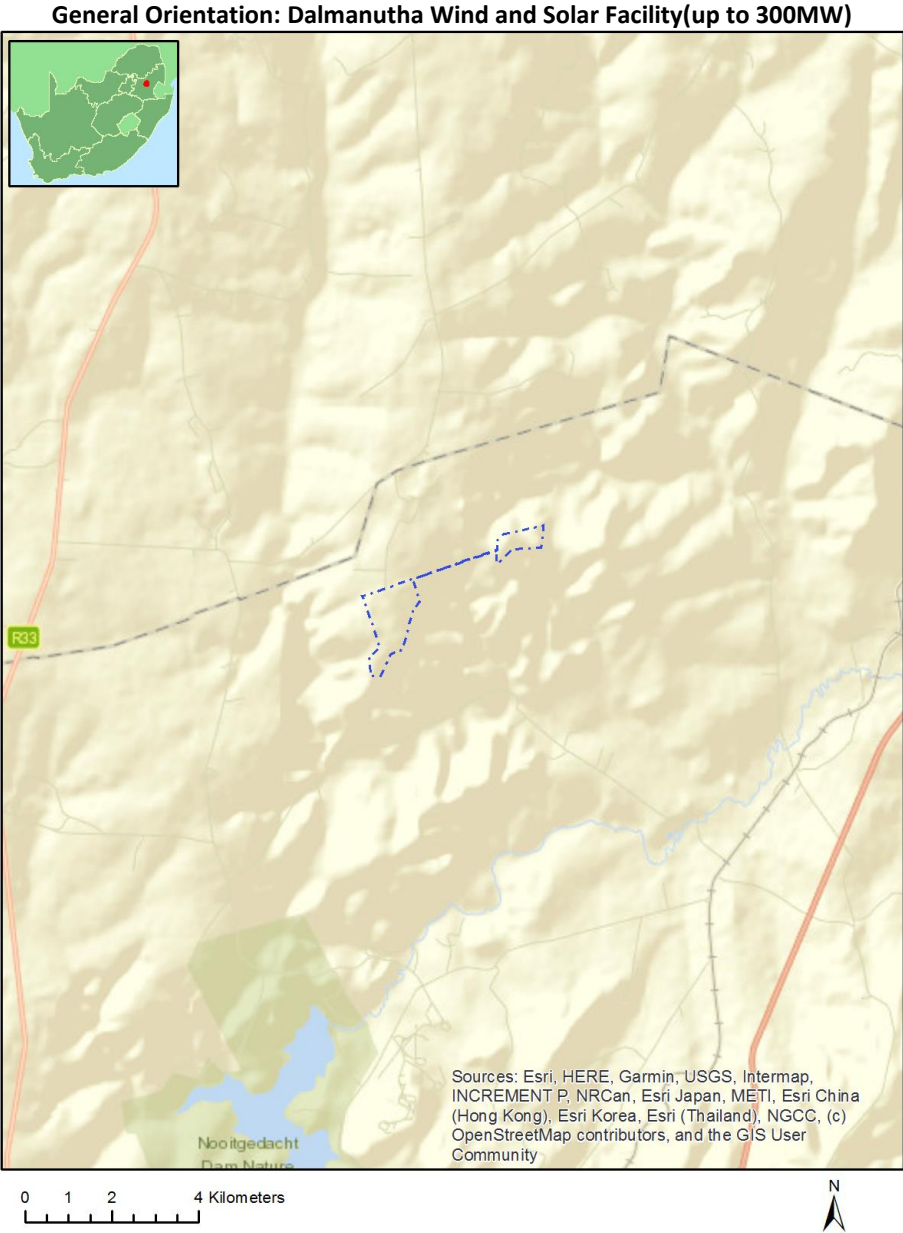
Application Category: Utilities Infrastructure|Electricity|Generation|Renewable|Solar|PV

Table of Contents

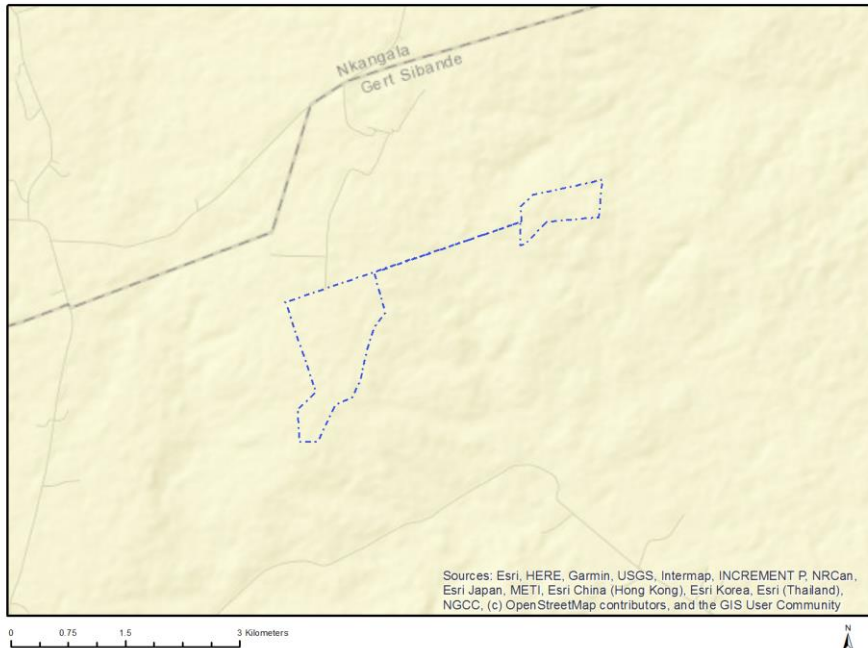
Proposed Project Location	3
Orientation map 1: General location	3
Map of proposed site and relevant area(s)	4
Cadastral details of the proposed site	4
Wind and Solar developments with an approved Environmental Authorisation or applications under consideration within 30 km of the proposed area	4
Environmental Management Frameworks relevant to the application	5
Environmental screening results and assessment outcomes	5
Relevant development incentives, restrictions, exclusions or prohibitions	5
Proposed Development Area Environmental Sensitivity	5
Specialist assessments identified	6
Results of the environmental sensitivity of the proposed area	8
MAP OF RELATIVE AGRICULTURE THEME SENSITIVITY	8
MAP OF RELATIVE ANIMAL SPECIES THEME SENSITIVITY	9
MAP OF RELATIVE AQUATIC BIODIVERSITY THEME SENSITIVITY	10
MAP OF RELATIVE ARCHAEOLOGICAL AND CULTURAL HERITAGE THEME SENSITIVITY	11
MAP OF RELATIVE AVIAN THEME SENSITIVITY	12
MAP OF RELATIVE CIVIL AVIATION (SOLAR PV) THEME SENSITIVITY	13
MAP OF RELATIVE DEFENCE THEME SENSITIVITY	14
MAP OF RELATIVE LANDSCAPE (SOLAR) THEME SENSITIVITY	15
MAP OF RELATIVE PALEONTOLOGY THEME SENSITIVITY	16
MAP OF RELATIVE PLANT SPECIES THEME SENSITIVITY	17
MAP OF RELATIVE RFI THEME SENSITIVITY	18
MAP OF RELATIVE TERRESTRIAL BIODIVERSITY THEME SENSITIVITY	19

Proposed Project Location

Orientation map 1: General location



Map of proposed site and relevant area(s)



Cadastral details of the proposed site

Property details:

No	Farm Name	Farm/ Erf No	Portion	Latitude	Longitude	Property Type
1	LEEUEWKLOOF	404	0	25°50'59.43S	30°7'4.33E	Farm
2	WELGEVONDEN	412	0	25°53'17.87S	30°7'11.98E	Farm
3	LEEUEWKLOOF	404	1	25°50'50.39S	30°7'26.86E	Farm Portion
4	LEEUEWKLOOF	404	2	25°51'32.56S	30°5'41.74E	Farm Portion
5	WELGEVONDEN	412	1	25°52'22.25S	30°7'31.24E	Farm Portion

Development footprint¹ vertices:

No development footprint(s) specified.

Wind and Solar developments with an approved Environmental Authorisation or applications under consideration within 30 km of the proposed area

No	EIA Reference No	Classification	Status of application	Distance from proposed area (km)
1	14/12/16/3/3/1/738	Solar PV	Approved	22.1

¹ "development footprint", means the area within the site on which the development will take place and includes all ancillary developments for example roads, power lines, boundary walls, paving etc. which require vegetation clearance or which will be disturbed and for which the application has been submitted.

Environmental Management Frameworks relevant to the application

No intersections with EMF areas found.

Environmental screening results and assessment outcomes

The following sections contain a summary of any development incentives, restrictions, exclusions or prohibitions that apply to the proposed development site as well as the most environmental sensitive features on the site based on the site sensitivity screening results for the application classification that was selected. The application classification selected for this report is:

Utilities Infrastructure | Electricity | Generation | Renewable | Solar | PV.

Relevant development incentives, restrictions, exclusions or prohibitions

The following development incentives, restrictions, exclusions or prohibitions and their implications that apply to this site are indicated below.

Incentive, restriction or prohibition	Implication
Strategic Gas Pipeline Corridors-Phase 8: Rompco Pipeline Corridor	https://screening.environment.gov.za/ScreeningDownloads/DevelopmentZones/Combined_GAS.pdf

Proposed Development Area Environmental Sensitivity

The following summary of the development site environmental sensitivities is identified. Only the highest environmental sensitivity is indicated. The footprint environmental sensitivities for the proposed development footprint as identified, are indicative only and must be verified on site by a suitably qualified person before the specialist assessments identified below can be confirmed.

Theme	Very High sensitivity	High sensitivity	Medium sensitivity	Low sensitivity
Agriculture Theme		X		
Animal Species Theme		X		
Aquatic Biodiversity Theme	X			
Archaeological and Cultural Heritage Theme				X
Avian Theme				X
Civil Aviation (Solar PV) Theme				X
Defence Theme				X
Landscape (Solar) Theme	X			
Paleontology Theme	X			
Plant Species Theme			X	
RFI Theme				X
Terrestrial Biodiversity Theme	X			

Specialist assessments identified

Based on the selected classification, and the known impacts associated with the proposed development, the following list of specialist assessments have been identified for inclusion in the assessment report. It is the responsibility of the EAP to confirm this list and to motivate in the assessment report, the reason for not including any of the identified specialist study including the provision of photographic evidence of the site situation.

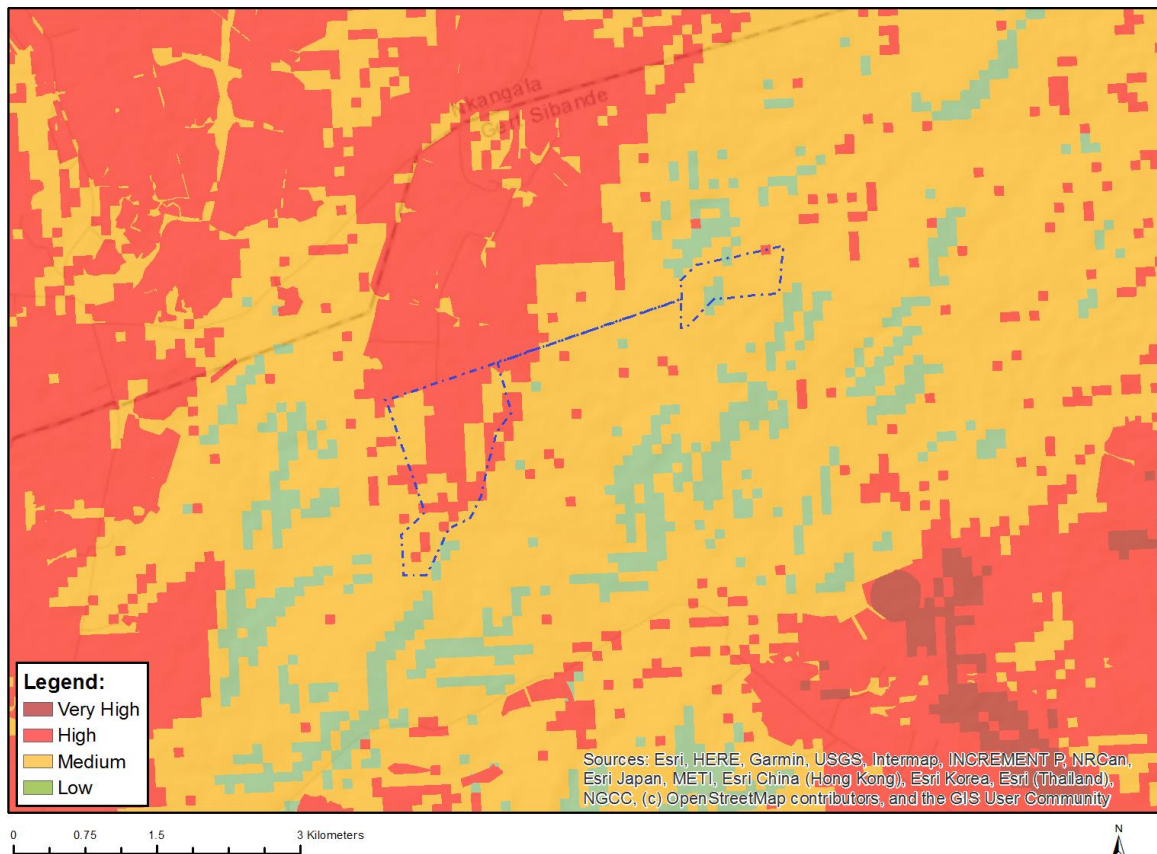
No	Specialist assessment	Assessment Protocol
1	Agricultural Impact Assessment	https://screening.environment.gov.za/ScreeningDownloads/AssessmentProtocols/Gazetted_WindAndSolar_Agriculture_Assessment_Protocols.pdf
2	Landscape/Visual Impact Assessment	https://screening.environment.gov.za/ScreeningDownloads/AssessmentProtocols/Gazetted_General_Requirement_Assessment_Protocols.pdf
3	Archaeological and Cultural Heritage Impact Assessment	https://screening.environment.gov.za/ScreeningDownloads/AssessmentProtocols/Gazetted_General_Requirement_Assessment_Protocols.pdf
4	Palaeontology Impact Assessment	https://screening.environment.gov.za/ScreeningDownloads/AssessmentProtocols/Gazetted_General_Requirement_Assessment_Protocols.pdf
5	Terrestrial Biodiversity Impact Assessment	https://screening.environment.gov.za/ScreeningDownloads/AssessmentProtocols/Gazetted_Terrestrial_Biodiversity_Assessment_Protocols.pdf
6	Aquatic Biodiversity Impact Assessment	https://screening.environment.gov.za/ScreeningDownloads/AssessmentProtocols/Gazetted_Aquatic_Biodiversity_Assessment_Protocols.pdf
7	Civil Aviation Assessment	https://screening.environment.gov.za/ScreeningDownloads/AssessmentProtocols/Gazetted_Civil_Aviation_Installations_Assessment_Protocols.pdf
8	Defense Assessment	https://screening.environment.gov.za/ScreeningDownloads/AssessmentProtocols/Gazetted_Defence_Installations_Assessment_Protocols.pdf
9	RFI Assessment	https://screening.environment.gov.za/ScreeningDownloads/AssessmentProtocols/Gazetted_General_Requirement_Assessment_Protocols.pdf
10	Geotechnical Assessment	https://screening.environment.gov.za/ScreeningDownloads/AssessmentProtocols/Gazetted_General_Requirement_Assessment_Protocols.pdf
11	Socio-Economic Assessment	https://screening.environment.gov.za/ScreeningDownloads/AssessmentProtocols/Gazetted_General_Requirement_Assessment_Protocols.pdf
12	Plant Species Assessment	https://screening.environment.gov.za/ScreeningDownloads/AssessmentProtocols/Gazetted_Plant_Species_Assessment_Protocols.pdf
13	Animal Species Assessment	https://screening.environment.gov.za/ScreeningDownloads/AssessmentProtocols/Gazetted_Animal_Species_Assessment_Protocols.pdf

OFFICIAL

Results of the environmental sensitivity of the proposed area.

The following section represents the results of the screening for environmental sensitivity of the proposed site for relevant environmental themes associated with the project classification. It is the duty of the EAP to ensure that the environmental themes provided by the screening tool are comprehensive and complete for the project. Refer to the disclaimer.

MAP OF RELATIVE AGRICULTURE THEME SENSITIVITY

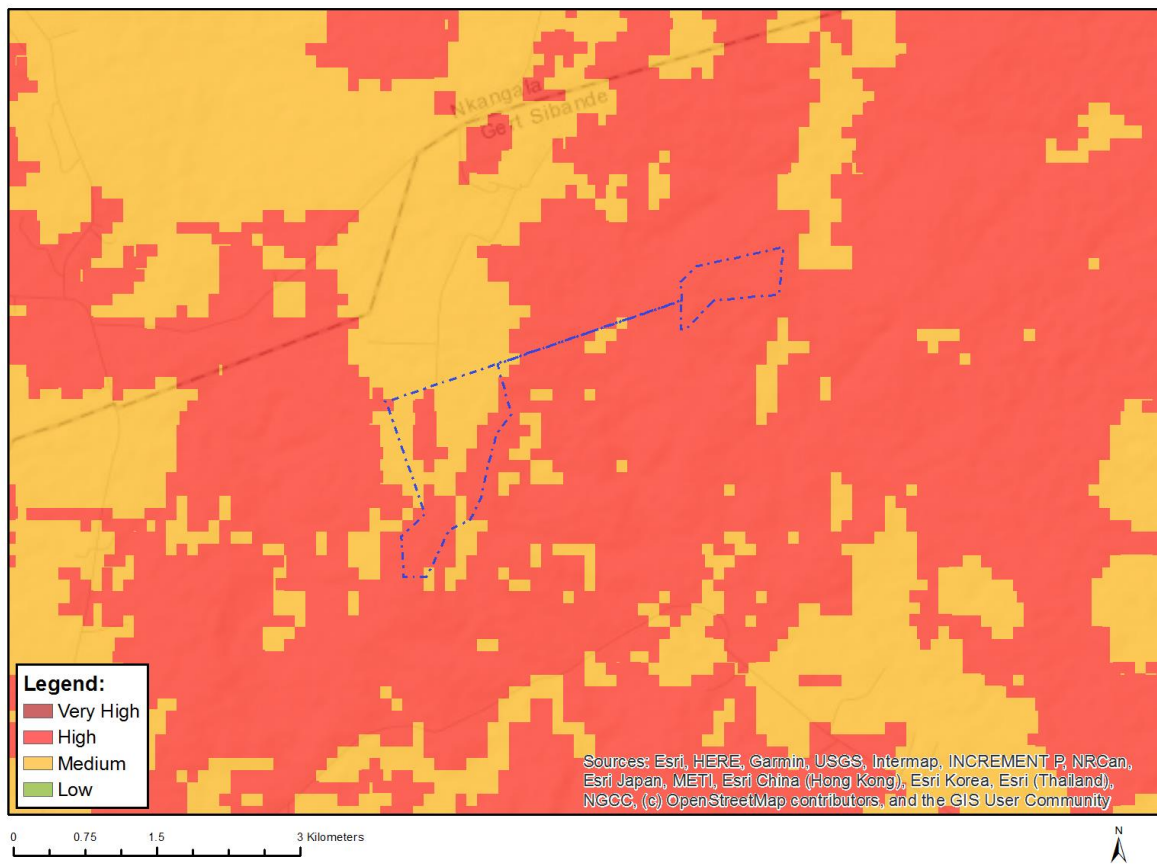


Very High sensitivity	High sensitivity	Medium sensitivity	Low sensitivity
	X		

Sensitivity Features:

Sensitivity	Feature(s)
High	Land capability;09. Moderate-High/10. Moderate-High
High	Annual Crop Cultivation / Planted Pastures Rotation;Land capability;09. Moderate-High/10. Moderate-High
High	Annual Crop Cultivation / Planted Pastures Rotation;Land capability;06. Low-Moderate/07. Low-Moderate/08. Moderate
Low	Land capability;01. Very low/02. Very low/03. Low-Very low/04. Low-Very low/05. Low
Medium	Land capability;06. Low-Moderate/07. Low-Moderate/08. Moderate

MAP OF RELATIVE ANIMAL SPECIES THEME SENSITIVITY



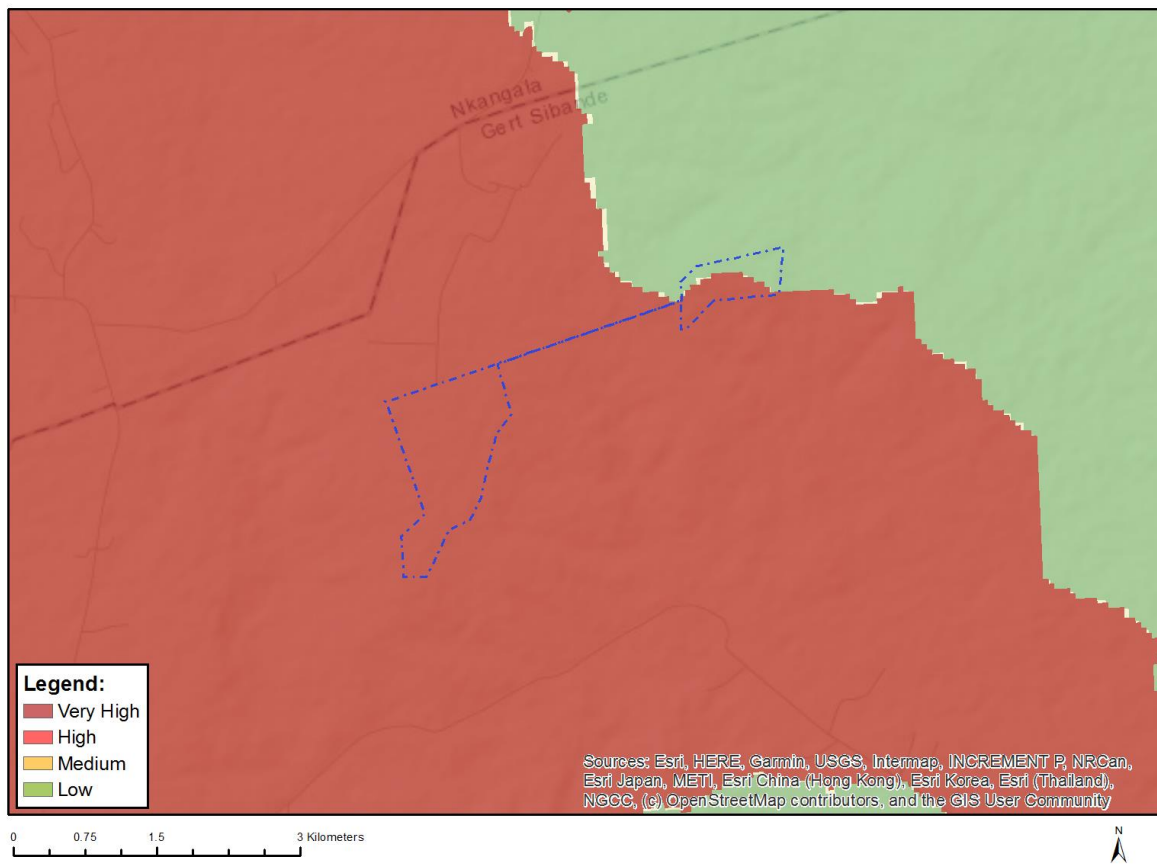
Where only a sensitive plant unique number or sensitive animal unique number is provided in the screening report and an assessment is required, the environmental assessment practitioner (EAP) or specialist is required to email SANBI at eiadatarequests@sanbi.org.za listing all sensitive species with their unique identifiers for which information is required. The name has been withheld as the species may be prone to illegal harvesting and must be protected. SANBI will release the actual species name after the details of the EAP or specialist have been documented.

Very High sensitivity	High sensitivity	Medium sensitivity	Low sensitivity
	X		

Sensitivity Features:

Sensitivity	Feature(s)
High	Aves-Geronticus calvus
High	Aves-Balearica regulorum
Medium	Aves-Turnix nanus
Medium	Aves-Neotis denhami
Medium	Aves-Sagittarius serpentarius
Medium	Aves-Eupodotis senegalensis
Medium	Mammalia-Chrysospalax villosus
Medium	Mammalia-Crocidura maquassiensis
Medium	Mammalia-Hydrictris maculicollis
Medium	Mammalia-Ourebia ourebi ourebi

MAP OF RELATIVE AQUATIC BIODIVERSITY THEME SENSITIVITY

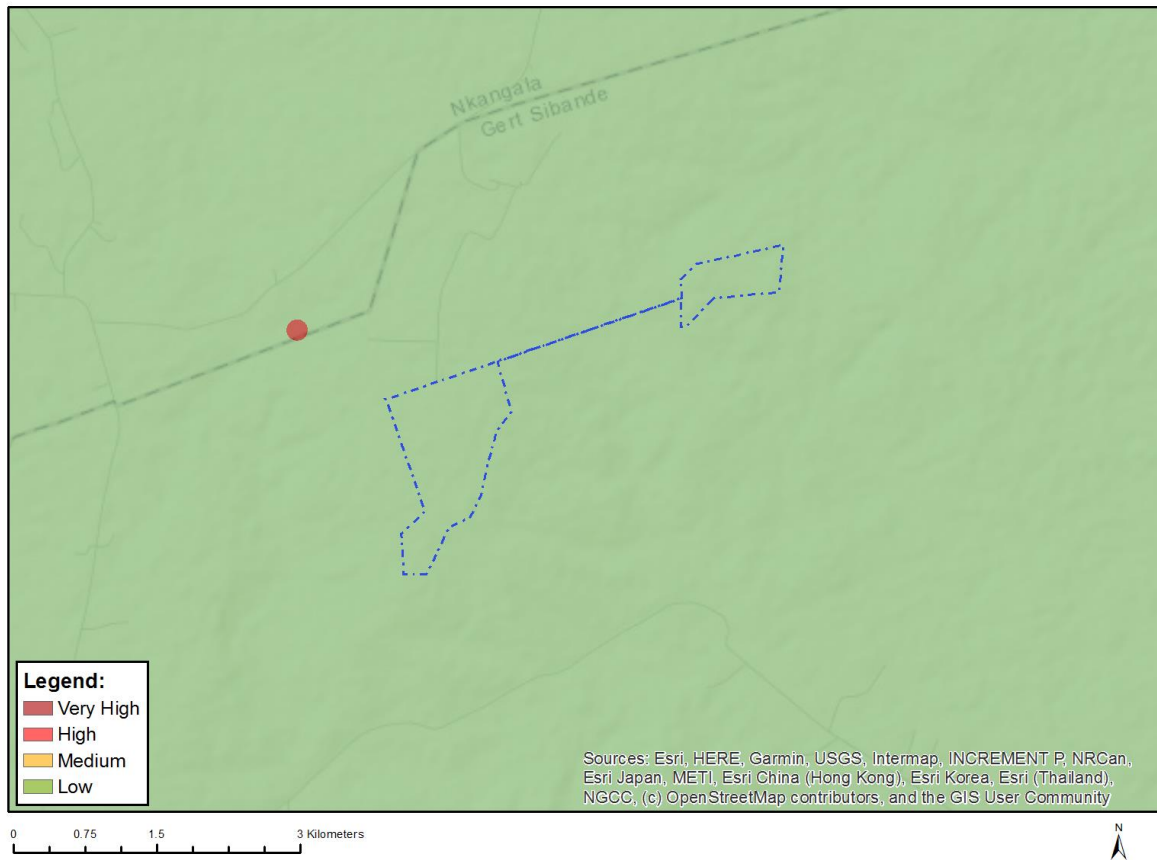


Very High sensitivity	High sensitivity	Medium sensitivity	Low sensitivity
X			

Sensitivity Features:

Sensitivity	Feature(s)
Low	Low sensitivity
Very High	Wetlands and Estuaries
Very High	Freshwater ecosystem priority area quinary catchments

MAP OF RELATIVE ARCHAEOLOGICAL AND CULTURAL HERITAGE THEME SENSITIVITY

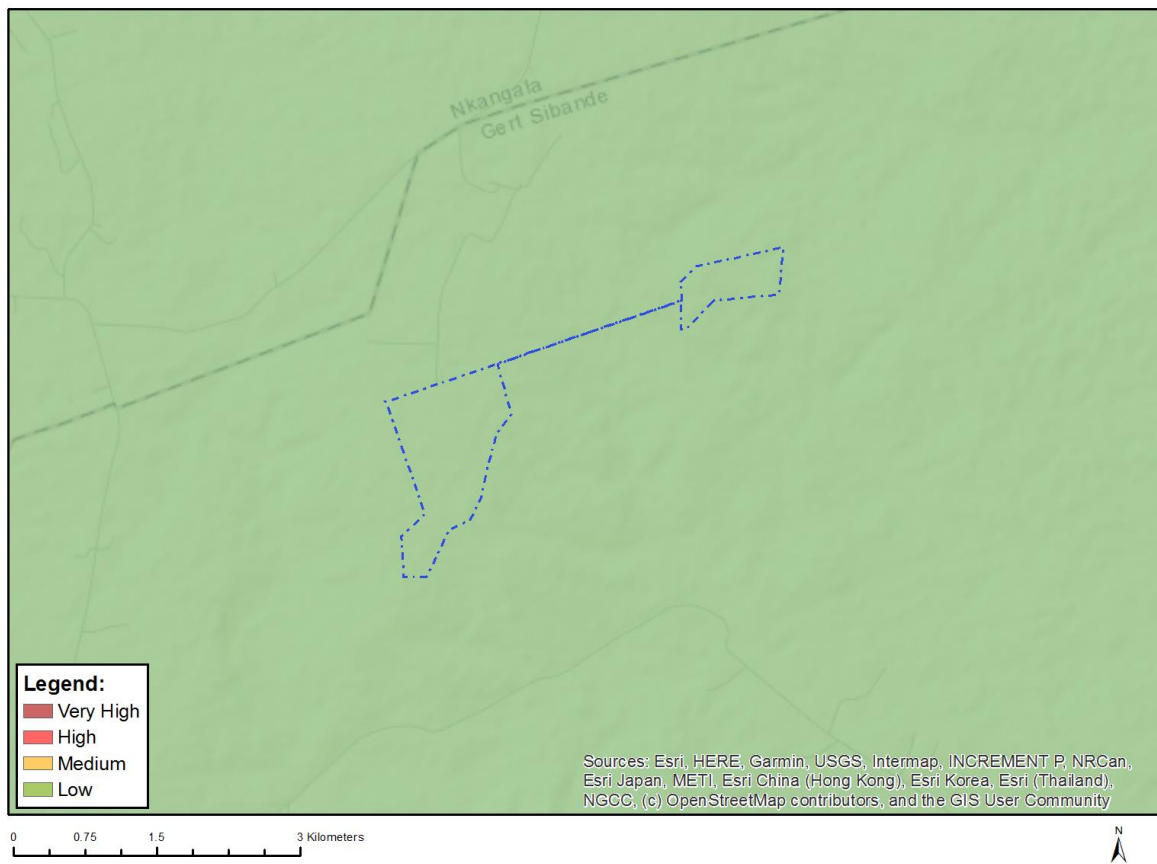


Very High sensitivity	High sensitivity	Medium sensitivity	Low sensitivity
			X

Sensitivity Features:

Sensitivity	Feature(s)
Low	Low sensitivity

MAP OF RELATIVE AVIAN THEME SENSITIVITY

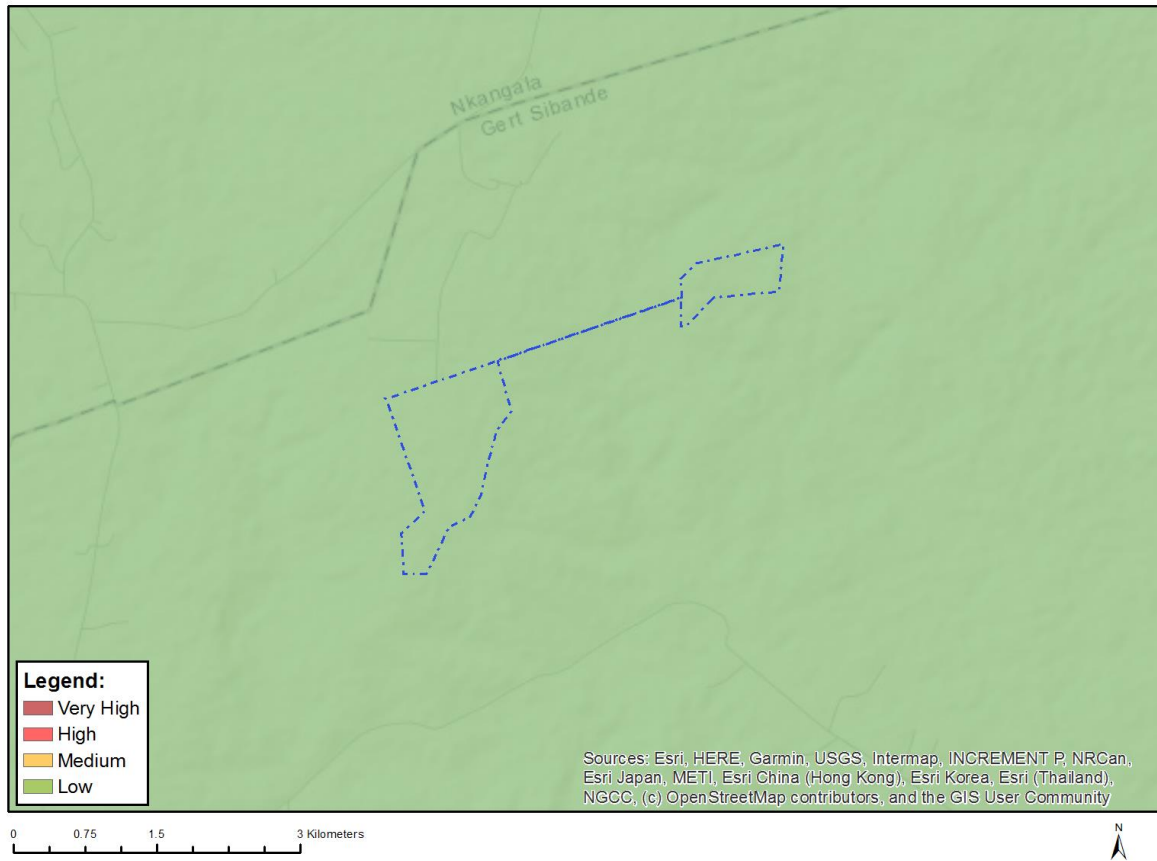


Very High sensitivity	High sensitivity	Medium sensitivity	Low sensitivity
			X

Sensitivity Features:

Sensitivity	Feature(s)
Low	Low Sensitivity

MAP OF RELATIVE CIVIL AVIATION (SOLAR PV) THEME SENSITIVITY

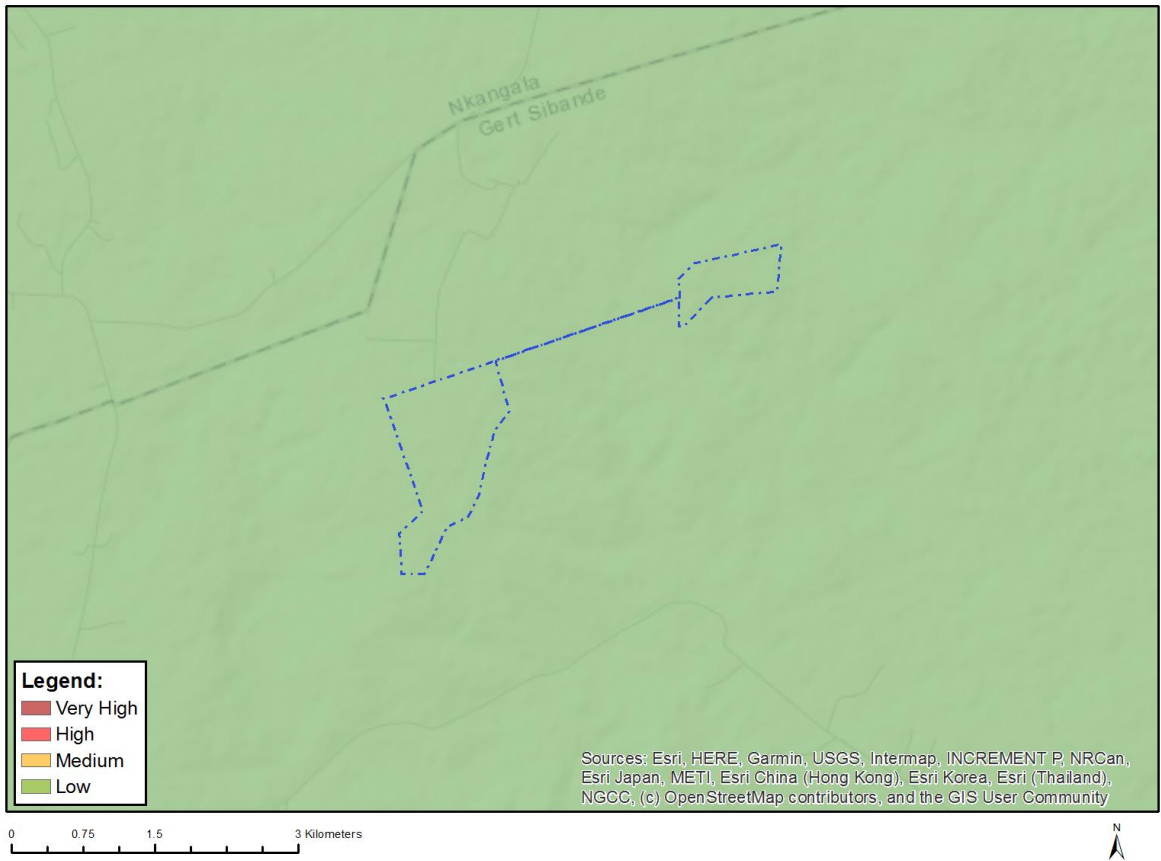


Very High sensitivity	High sensitivity	Medium sensitivity	Low sensitivity
			X

Sensitivity Features:

Sensitivity	Feature(s)
Low	No major or other types of civil aviation aerodromes

MAP OF RELATIVE DEFENCE THEME SENSITIVITY

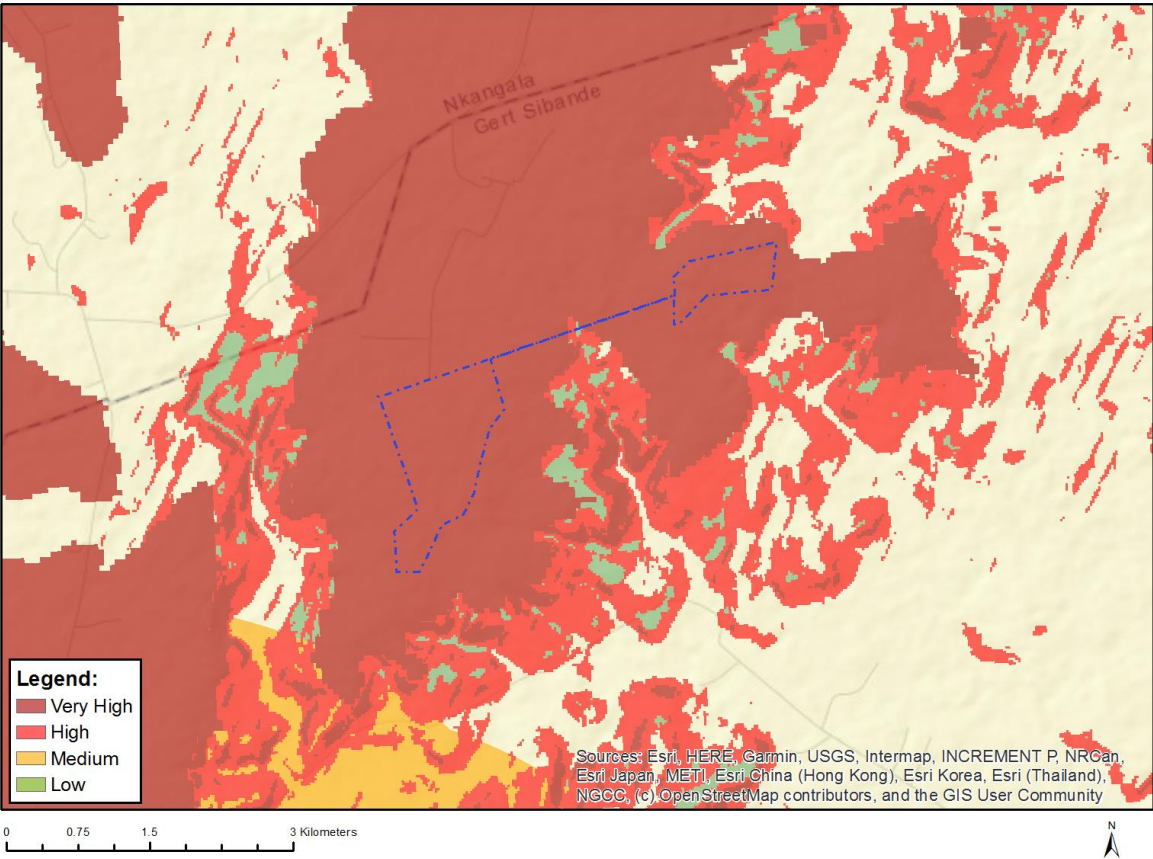


Very High sensitivity	High sensitivity	Medium sensitivity	Low sensitivity
			X

Sensitivity Features:

Sensitivity	Feature(s)
Low	Low sensitivity

MAP OF RELATIVE LANDSCAPE (SOLAR) THEME SENSITIVITY

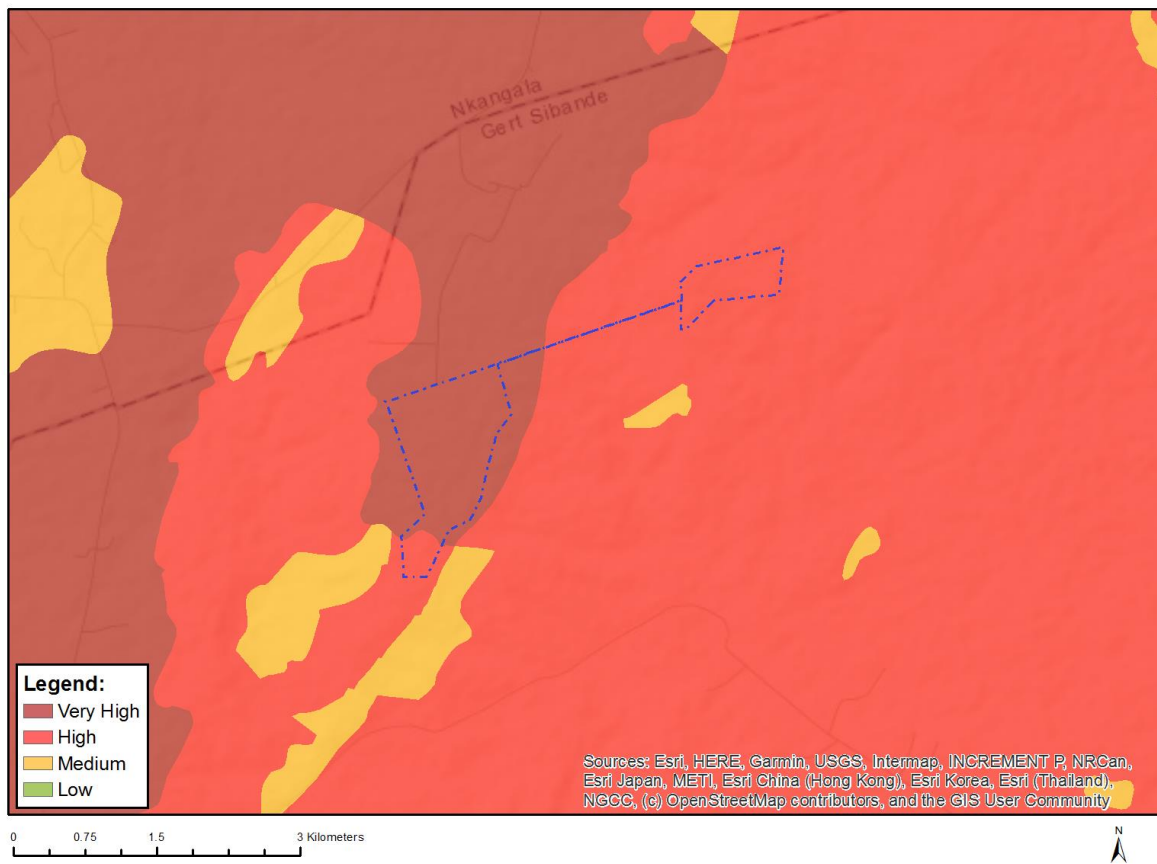


Very High sensitivity	High sensitivity	Medium sensitivity	Low sensitivity
X			

Sensitivity Features:

Sensitivity	Feature(s)
High	Slope between 1:4 and 1:10
Low	Slope less than 1:10
Very High	Mountain tops and high ridges
Very High	Slope more than 1:4

MAP OF RELATIVE PALEONTOLOGY THEME SENSITIVITY

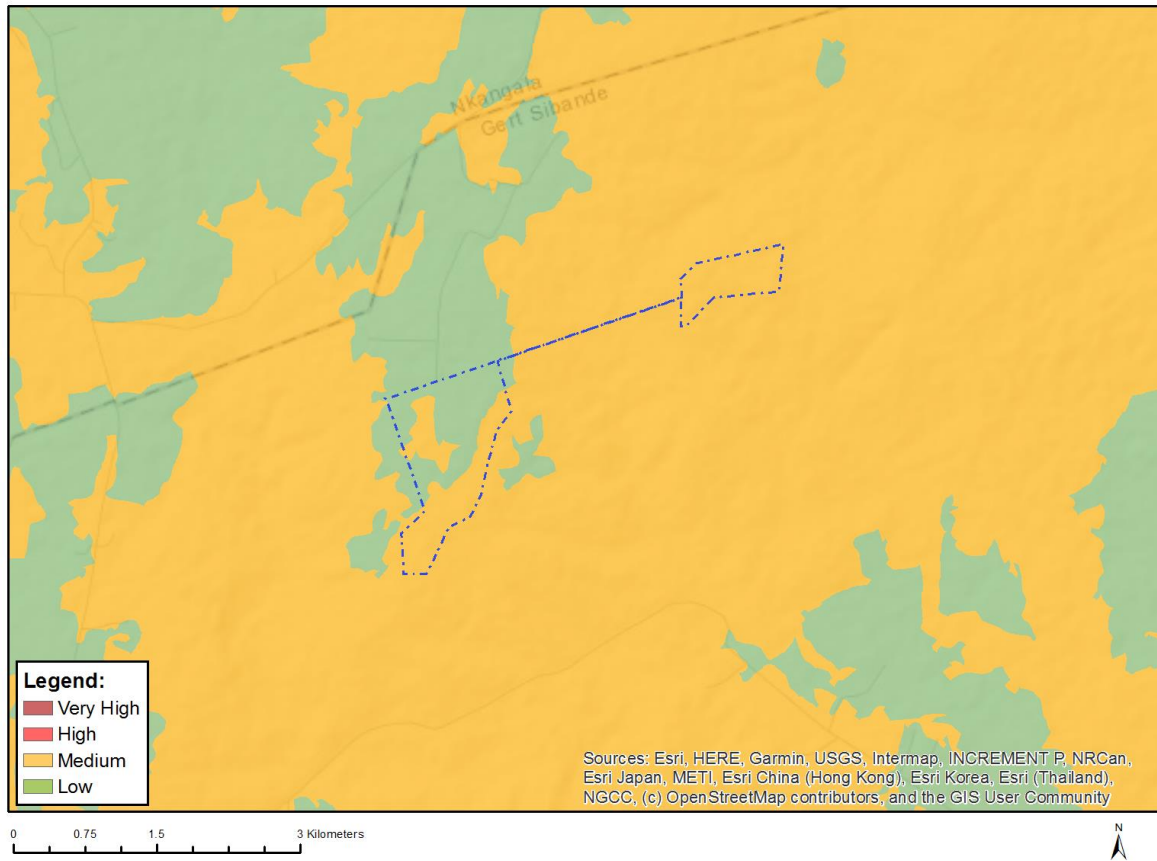


Very High sensitivity	High sensitivity	Medium sensitivity	Low sensitivity
X			

Sensitivity Features:

Sensitivity	Feature(s)
High	Features with a High paleontological sensitivity
Medium	Features with a Medium paleontological sensitivity
Very High	Features with a Very High paleontological sensitivity

MAP OF RELATIVE PLANT SPECIES THEME SENSITIVITY



Where only a sensitive plant unique number or sensitive animal unique number is provided in the screening report and an assessment is required, the environmental assessment practitioner (EAP) or specialist is required to email SANBI at eiadatarequests@sanbi.org.za listing all sensitive species with their unique identifiers for which information is required. The name has been withheld as the species may be prone to illegal harvesting and must be protected. SANBI will release the actual species name after the details of the EAP or specialist have been documented.

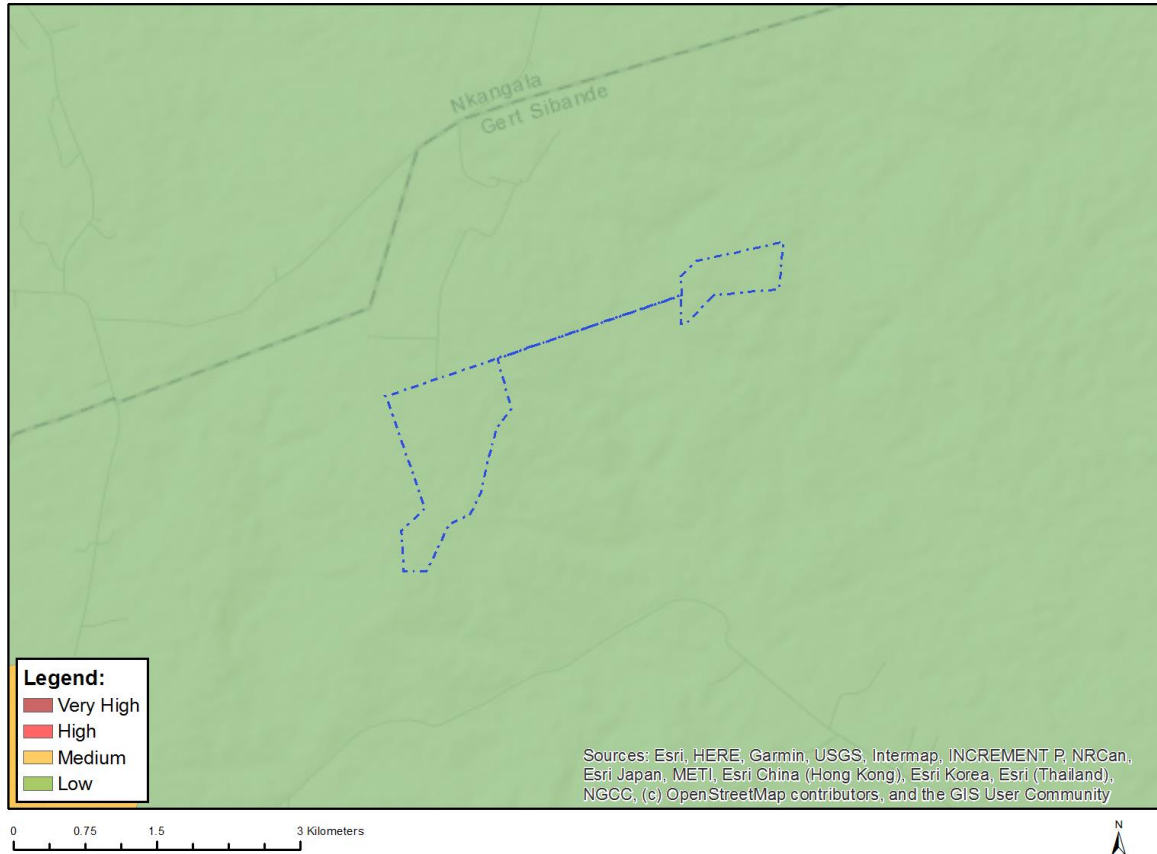
Very High sensitivity	High sensitivity	Medium sensitivity	Low sensitivity
		X	

Sensitivity Features:

Sensitivity	Feature(s)
Low	Low Sensitivity
Medium	Sensitive species 1252
Medium	Khadia carolinensis
Medium	Sensitive species 1201
Medium	Asclepias dissona
Medium	Miraglossum davyi
Medium	Khadia alticola
Medium	Sensitive species 41
Medium	Sensitive species 691
Medium	Sensitive species 998
Medium	Sensitive species 1219
Medium	Sensitive species 313
Medium	Pachycarpus suaveolens

Medium	Sensitive species 1086
Medium	Sensitive species 321
Medium	Hesperantha bulbifera

MAP OF RELATIVE RFI THEME SENSITIVITY

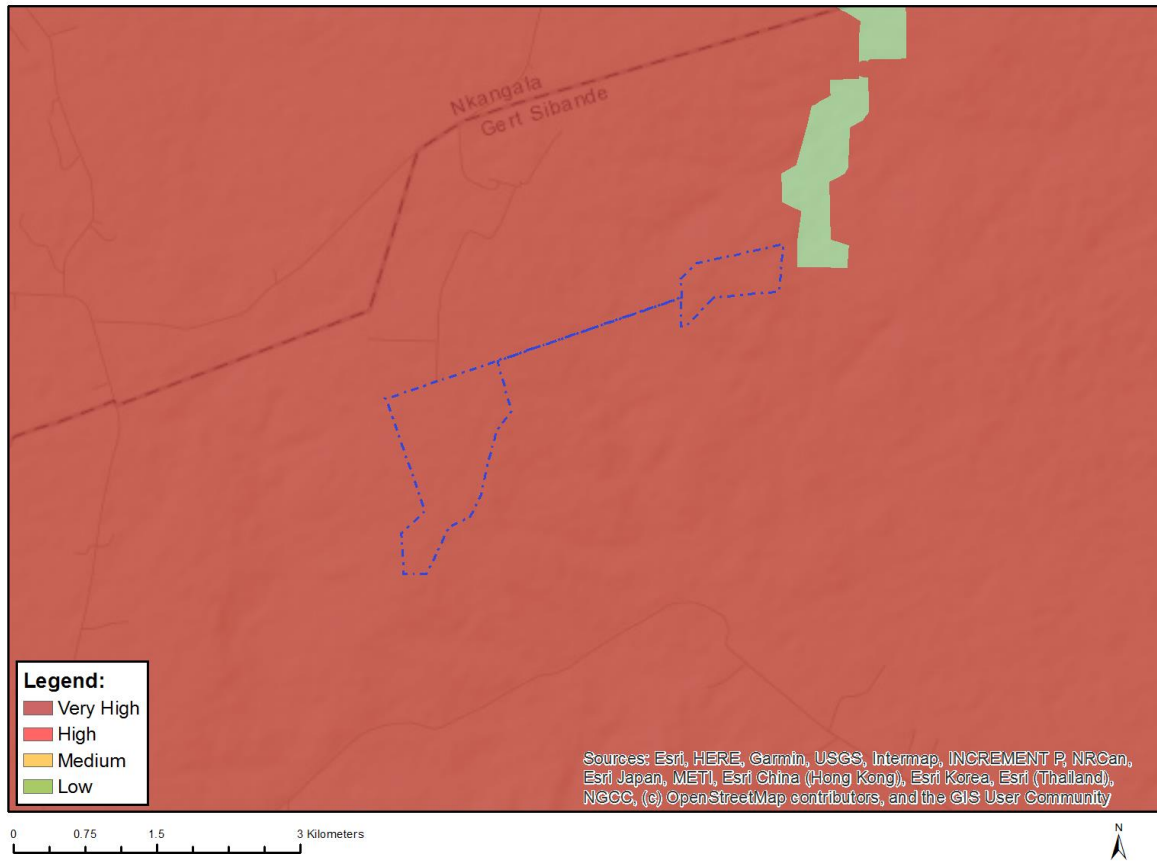


Very High sensitivity	High sensitivity	Medium sensitivity	Low sensitivity
			X

Sensitivity Features:

Sensitivity	Feature(s)
Low	Low sensitivity

MAP OF RELATIVE TERRESTRIAL BIODIVERSITY THEME SENSITIVITY



Very High sensitivity	High sensitivity	Medium sensitivity	Low sensitivity
X			

Sensitivity Features:

Sensitivity	Feature(s)
Very High	Critical biodiversity area 1
Very High	Ecological support area: landscape corridor
Very High	Ecological support area: local corridor
Very High	FEPA Subcatchments
Very High	Protected Areas Expansion Strategy
Very High	Vulnerable ecosystem

**SCREENING REPORT FOR AN ENVIRONMENTAL AUTHORIZATION AS
REQUIRED BY THE 2014 EIA REGULATIONS – PROPOSED SITE
ENVIRONMENTAL SENSITIVITY**

EIA Reference number: TBC

Project name: Dalmanutha Wind Energy Facility (up to 300 MW)

Project title: Dalmanutha WEF

Date screening report generated: 24/11/2022 19:28:57

Applicant: Dalmanutha Wind (RF) Pty Ltd

Compiler: WSP Africa

Compiler signature:
.....

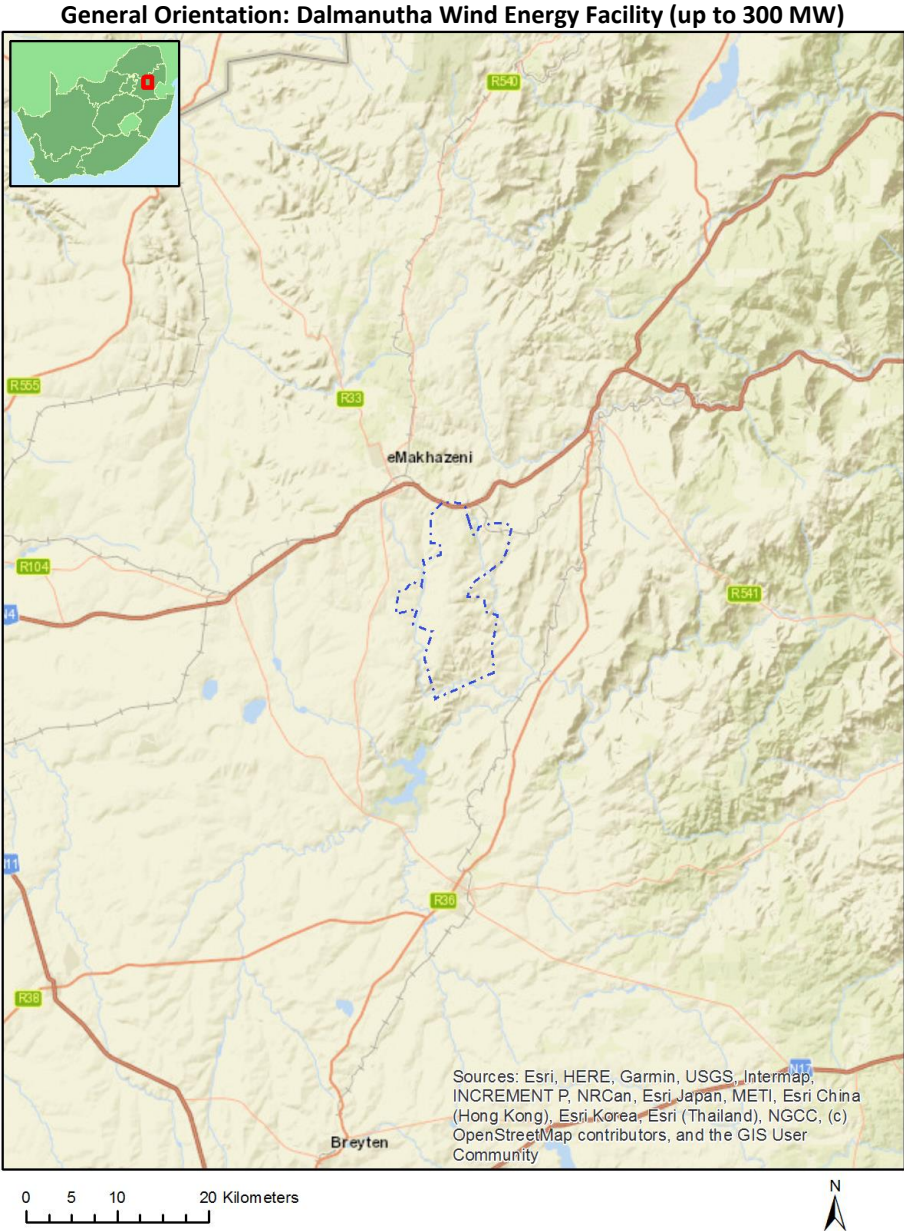
Application Category: Utilities Infrastructure | Electricity | Generation | Renewable | Wind

Table of Contents

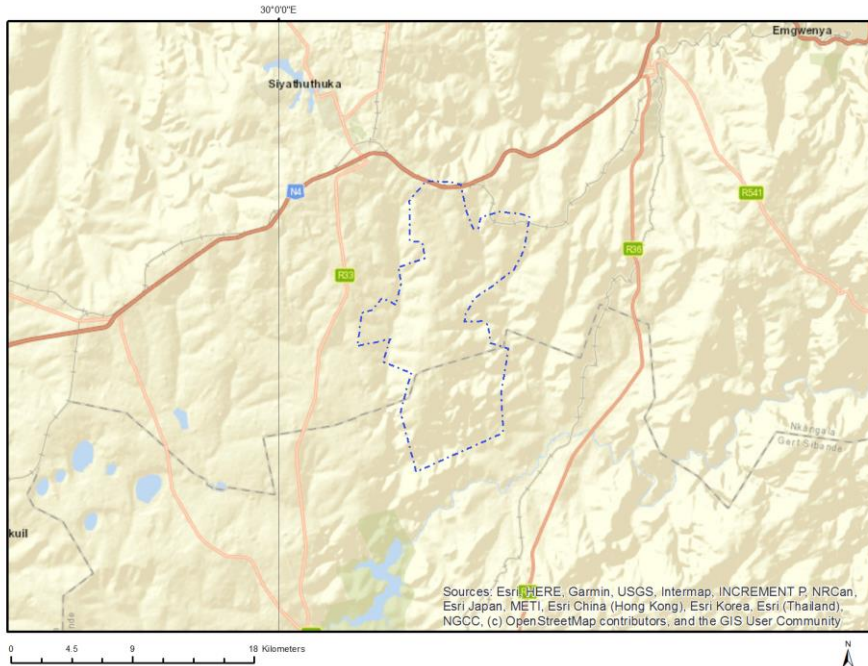
Proposed Project Location	3
Orientation map 1: General location	3
Map of proposed site and relevant area(s)	4
Cadastral details of the proposed site	4
Wind and Solar developments with an approved Environmental Authorisation or applications under consideration within 30 km of the proposed area	6
Environmental Management Frameworks relevant to the application	6
Environmental screening results and assessment outcomes	6
Relevant development incentives, restrictions, exclusions or prohibitions	6
Map indicating proposed development footprint within applicable development incentive, restriction, exclusion or prohibition zones	8
Proposed Development Area Environmental Sensitivity	8
Specialist assessments identified	9
Results of the environmental sensitivity of the proposed area	11
MAP OF RELATIVE AGRICULTURE THEME SENSITIVITY	11
MAP OF RELATIVE ANIMAL SPECIES THEME SENSITIVITY	12
MAP OF RELATIVE AQUATIC BIODIVERSITY THEME SENSITIVITY	13
MAP OF RELATIVE ARCHAEOLOGICAL AND CULTURAL HERITAGE THEME SENSITIVITY	14
MAP OF RELATIVE AVIAN (WIND) THEME SENSITIVITY	15
MAP OF RELATIVE BATS (WIND) THEME SENSITIVITY	16
MAP OF RELATIVE CIVIL AVIATION (WIND) THEME SENSITIVITY	17
MAP OF RELATIVE DEFENCE (WIND) THEME SENSITIVITY	18
MAP OF RELATIVE FLICKER THEME SENSITIVITY	19
MAP OF RELATIVE LANDSCAPE (WIND) THEME SENSITIVITY	20
MAP OF RELATIVE PALEONTOLOGY THEME SENSITIVITY	21
MAP OF RELATIVE NOISE THEME SENSITIVITY	22
MAP OF RELATIVE PLANT SPECIES THEME SENSITIVITY	23
MAP OF RELATIVE RFI (WIND) THEME SENSITIVITY	24
MAP OF RELATIVE TERRESTRIAL BIODIVERSITY THEME SENSITIVITY	25

Proposed Project Location

Orientation map 1: General location



Map of proposed site and relevant area(s)



Cadastral details of the proposed site

Property details:

No	Farm Name	Farm/ Erf No	Portion	Latitude	Longitude	Property Type
1	WELGEVONDEN	412	0	25°53'17.87S	30°7'11.98E	Farm
2	DRIEKOP	387	0	25°47'55.37S	30°11'17.54E	Farm
3	WILLEM	372	0	25°44'51.86S	30°10'52.03E	Farm
4	LEEUWKLOOF	404	0	25°50'59.43S	30°7'4.33E	Farm
5	DRENTHÉ	402	0	25°51'8.58S	30°10'9.03E	Farm
6	BERGEN DAL	378	0	25°44'32.71S	30°5'41.67E	Farm
7	HARTBEESTESPRUIT	361	0	25°41'21.41S	30°7'10.97E	Farm
8	VOGELSTRUISPOORT	384	0	25°47'45.06S	30°4'20.86E	Farm
9	CAMELIA	467	0	25°49'54.33S	30°5'58.68E	Farm
10	FRISGEWAAGD	409	0	25°53'51.32S	30°4'6.57E	Farm
11	LEEUWKLOOF	403	0	25°49'25.09S	30°7'37.8E	Farm
12	CLERCQSVALLEI	414	0	25°53'42.34S	30°9'33.18E	Farm
13	GELUK	405	0	25°50'49.61S	30°3'31.8E	Farm
14	DALMANUTHA	401	0	25°45'51.94S	30°10'23.61E	Farm
15	WAAIKRAAL	385	0	25°46'56.8S	30°7'49.56E	Farm
16	DRIEFONTEIN	377	0	25°43'52.65S	30°10'20.1E	Farm
17	WAAIKRAAL	385	22	25°46'13.14S	30°9'29.36E	Farm Portion
18	WAAIKRAAL	385	6	25°47'48.87S	30°6'59.9E	Farm Portion
19	BERGEN DAL	378	1	25°44'50.63S	30°6'47.96E	Farm Portion
20	BERGEN DAL	378	8	25°43'58.39S	30°6'29.4E	Farm Portion
21	DRIEFONTEIN	377	4	25°44'34.15S	30°9'12.43E	Farm Portion
22	DALMANUTHA	376	16	25°45'19.27S	30°10'0.44E	Farm Portion
23	DALMANUTHA	401	0	25°45'51.94S	30°10'23.61E	Farm Portion
24	BERGEN DAL	378	26	25°44'1.84S	30°7'1.92E	Farm Portion
25	BERGEN DAL	378	30	25°44'2.42S	30°7'2.23E	Farm Portion
26	BERGEN DAL	378	9	25°44'45.95S	30°5'53.5E	Farm Portion
27	BERGEN DAL	378	18	25°43'54.32S	30°5'37.08E	Farm Portion

28	WAAIKRAAL	385	24	25°46'9.65S	30°6'24.79E	Farm Portion
29	WAAIKRAAL	385	13	25°45'11.47S	30°9'4.21E	Farm Portion
30	WAAIKRAAL	385	11	25°48'22.07S	30°7'46.2E	Farm Portion
31	WAAIKRAAL	385	7	25°46'22.74S	30°7'39.37E	Farm Portion
32	BERGEN DAL	378	12	25°44'33.28S	30°7'41.37E	Farm Portion
33	BERGEN DAL	378	31	25°44'2.71S	30°6'33.56E	Farm Portion
34	DRIEFONTEIN	377	8	25°44'54.97S	30°9'23.96E	Farm Portion
35	FRISGEWAAGD	409	20	25°53'25.34S	30°4'45.23E	Farm Portion
36	HARTBEESTESPRUIT	361	19	25°43'51.95S	30°6'4.1E	Farm Portion
37	FRISGEWAAGD	409	16	25°52'23.01S	30°4'2.52E	Farm Portion
38	GELUK	405	0	25°51'5.01S	30°4'33.66E	Farm Portion
39	STEYNSPLAATS	360	15	25°43'47.01S	30°5'50.37E	Farm Portion
40	STEYNSPLAATS	360	16	25°43'47.87S	30°5'49.65E	Farm Portion
41	LEEUEWKLOOF	403	4	25°49'47.97S	30°7'38.34E	Farm Portion
42	LEEUEWKLOOF	403	2	25°49'28.24S	30°8'32.66E	Farm Portion
43	DRENTHE	402	1	25°51'11.21S	30°9'38.23E	Farm Portion
44	CLERCQSVALLEI	414	0	25°53'39.2S	30°9'36.51E	Farm Portion
45	BERGEN DAL	378	7	25°45'1.68S	30°5'7.48E	Farm Portion
46	WELGEVONDEN	412	1	25°52'22.25S	30°7'31.24E	Farm Portion
47	GELUK	405	18	25°49'51.16S	30°3'15.3E	Farm Portion
48	LEEUEWKLOOF	403	7	25°49'15.69S	30°8'55.93E	Farm Portion
49	DRENTHE	402	2	25°50'20.92S	30°10'24.87E	Farm Portion
50	WAAIKRAAL	385	19	25°45'39.89S	30°9'5.59E	Farm Portion
51	WAAIKRAAL	385	10	25°46'43.59S	30°8'42.76E	Farm Portion
52	WAAIKRAAL	385	9	25°45'30.97S	30°7'51.23E	Farm Portion
53	GELUK	405	3	25°49'46.63S	30°5'12.73E	Farm Portion
54	LEEUEWKLOOF	403	1	25°48'46.17S	30°8'23.08E	Farm Portion
55	DRENTHE	402	4	25°52'25.14S	30°9'42.43E	Farm Portion
56	HARTBEESTESPRUIT	361	27	25°44'2.98S	30°7'21.09E	Farm Portion
57	HARTBEESTESPRUIT	361	26	25°43'53.42S	30°6'0.74E	Farm Portion
58	LEEUEWKLOOF	403	3	25°49'12.49S	30°7'22.08E	Farm Portion
59	VOGELSTRUISPOORT	384	8	25°46'20.92S	30°5'9.31E	Farm Portion
60	CAMELIA	467	0	25°49'54.33S	30°5'58.68E	Farm Portion
61	WAAIKRAAL	385	18	25°45'40.59S	30°9'0.23E	Farm Portion
62	WELGEVONDEN	412	4	25°53'23.48S	30°6'55.13E	Farm Portion
63	GELUK	405	5	25°49'42.53S	30°4'10.06E	Farm Portion
64	LEEUEWKLOOF	404	1	25°50'50.39S	30°7'26.86E	Farm Portion
65	DRENTHE	402	3	25°51'57.61S	30°10'8.3E	Farm Portion
66	DRIEFONTEIN	377	11	25°44'56.98S	30°8'43.58E	Farm Portion
67	DRIEFONTEIN	377	6	25°44'38.19S	30°10'9.5E	Farm Portion
68	WILLEM	372	0	25°44'51.07S	30°10'53.52E	Farm Portion
69	HARTBEESTESPRUIT	361	1	25°43'16.34S	30°7'12.33E	Farm Portion
70	STEYNSPLAATS	360	11	25°43'50.9S	30°5'53.77E	Farm Portion
71	VOGELSTRUISPOORT	384	3	25°48'54.32S	30°3'1.87E	Farm Portion
72	VOGELSTRUISPOORT	384	5	25°48'32.71S	30°5'33.04E	Farm Portion
73	VOGELSTRUISPOORT	384	13	25°48'22.33S	30°3'43.59E	Farm Portion
74	VOGELSTRUISPOORT	384	11	25°48'36.19S	30°5'1.95E	Farm Portion
75	LEEUEWKLOOF	404	2	25°51'32.56S	30°5'41.74E	Farm Portion
76	VOGELSTRUISPOORT	384	18	25°46'24.63S	30°5'37.92E	Farm Portion
77	VOGELSTRUISPOORT	384	15	25°48'31.61S	30°4'21.54E	Farm Portion
78	DRIEKOP	387	9	25°47'7.78S	30°10'17.78E	Farm Portion
79	DRIEKOP	387	6	25°46'14.79S	30°9'47.34E	Farm Portion
80	VOGELSTRUISPOORT	384	7	25°47'25.44S	30°5'34.22E	Farm Portion
81	VOGELSTRUISPOORT	384	4	25°49'5.73S	30°4'4.76E	Farm Portion
82	WAAIKRAAL	385	27	25°45'47.74S	30°8'44.1E	Farm Portion
83	WAAIKRAAL	385	5	25°46'59.11S	30°9'25.36E	Farm Portion
84	BERGEN DAL	378	24	25°43'59.4S	30°6'25.8E	Farm Portion
85	HARTBEESTESPRUIT	361	10	25°43'58.01S	30°6'29.04E	Farm Portion
86	WELGEVONDEN	412	8	25°53'34.88S	30°7'49.33E	Farm Portion
87	FRISGEWAAGD	409	21	25°54'24.04S	30°4'54.73E	Farm Portion

88	LEEUEWKLOOF	403	0	25°49'48.76S	30°6'32.64E	Farm Portion
89	HARTBEESTESPRUIT	361	24	25°43'52.45S	30°6'3.21E	Farm Portion
90	HARTBEESTESPRUIT	361	21	25°44'1.14S	30°7'12.06E	Farm Portion
91	VOGELSTRUISPOORT	384	14	25°48'9.56S	30°4'41.94E	Farm Portion
92	VOGELSTRUISPOORT	384	9	25°46'33.49S	30°4'18.32E	Farm Portion
93	VOGELSTRUISPOORT	384	0	25°47'52.38S	30°3'43.37E	Farm Portion
94	VOGELSTRUISPOORT	384	6	25°47'30.07S	30°4'38.55E	Farm Portion
95	WAAIKRAAL	385	16	25°45'34.72S	30°8'52.73E	Farm Portion
96	WAAIKRAAL	385	2	25°47'55.2S	30°8'37.32E	Farm Portion
97	FRISGEWAAGD	409	23	25°54'4.66S	30°5'40.33E	Farm Portion
98	HARTBEESTESPRUIT	361	25	25°44'1.49S	30°7'15.33E	Farm Portion
99	HARTBEESTESPRUIT	361	14	25°43'52.94S	30°6'2.57E	Farm Portion
100	VOGELSTRUISPOORT	384	17	25°48'43.99S	30°4'46.84E	Farm Portion

Development footprint¹ vertices:
No development footprint(s) specified.

Wind and Solar developments with an approved Environmental Authorisation or applications under consideration within 30 km of the proposed area

No	EIA Reference No	Classification	Status of application	Distance from proposed area (km)
1	14/12/16/3/3/1/738	Solar PV	Approved	8.7

Environmental Management Frameworks relevant to the application

No intersections with EMF areas found.

Environmental screening results and assessment outcomes

The following sections contain a summary of any development incentives, restrictions, exclusions or prohibitions that apply to the proposed development site as well as the most environmental sensitive features on the site based on the site sensitivity screening results for the application classification that was selected. The application classification selected for this report is:

Utilities Infrastructure | Electricity | Generation | Renewable | Wind.

Relevant development incentives, restrictions, exclusions or prohibitions

The following development incentives, restrictions, exclusions or prohibitions and their implications that apply to this site are indicated below.

Incentiv	Implication
----------	-------------

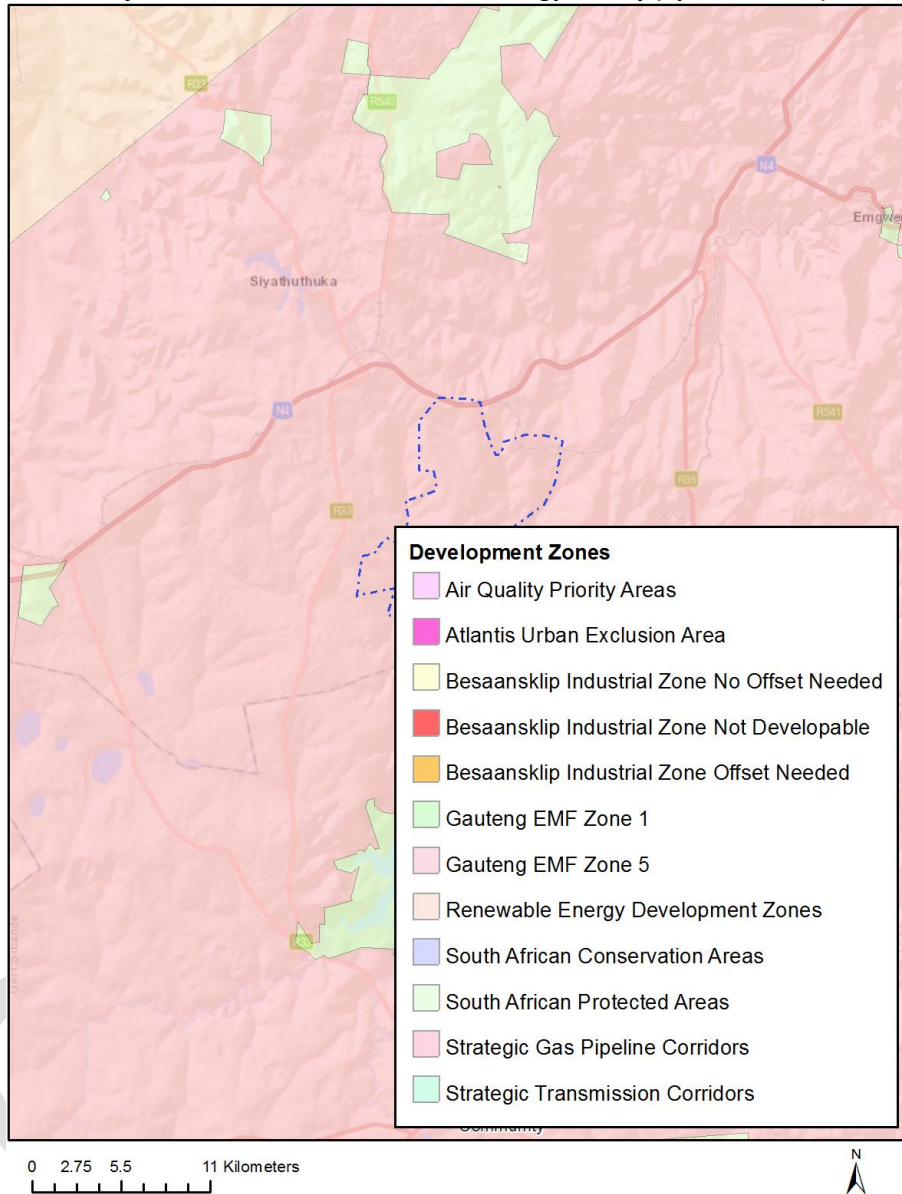
¹ “development footprint”, means the area within the site on which the development will take place and includes all ancillary developments for example roads, power lines, boundary walls, paving etc. which require vegetation clearance or which will be disturbed and for which the application has been submitted.

e, restrictio n or prohibiti on	
Renewable energy developme nt zones 9- Emalahleni	https://screening.environment.gov.za/ScreeningDownloads/DevelopmentZones/Combined_REDZ.pdf
Strategic Gas Pipeline Corridors- Phase 8: Rompco Pipeline Corridor	https://screening.environment.gov.za/ScreeningDownloads/DevelopmentZones/Combined_GAS.pdf

OFFICIAL

Map indicating proposed development footprint within applicable development incentive, restriction, exclusion or prohibition zones

Project Location: Dalmanutha Wind Energy Facility (up to 300 MW)



Proposed Development Area Environmental Sensitivity

The following summary of the development site environmental sensitivities is identified. Only the highest environmental sensitivity is indicated. The footprint environmental sensitivities for the proposed development footprint as identified, are indicative only and must be verified on site by a suitably qualified person before the specialist assessments identified below can be confirmed.

Theme	Very High sensitivity	High sensitivity	Medium sensitivity	Low sensitivity
Agriculture Theme	X			
Animal Species Theme		X		

Aquatic Biodiversity Theme	X			
Archaeological and Cultural Heritage Theme	X			
Avian (Wind) Theme				X
Bats (Wind) Theme		X		
Civil Aviation (Wind) Theme		X		
Defence (Wind) Theme				X
Flicker Theme	X			
Landscape (Wind) Theme	X			
Paleontology Theme	X			
Noise Theme	X			
Plant Species Theme			X	
RFI (Wind) Theme		X		
Terrestrial Biodiversity Theme	X			

Specialist assessments identified

Based on the selected classification, and the environmental sensitivities of the proposed development footprint, the following list of specialist assessments have been identified for inclusion in the assessment report. It is the responsibility of the EAP to confirm this list and to motivate in the assessment report, the reason for not including any of the identified specialist study including the provision of photographic evidence of the site situation.

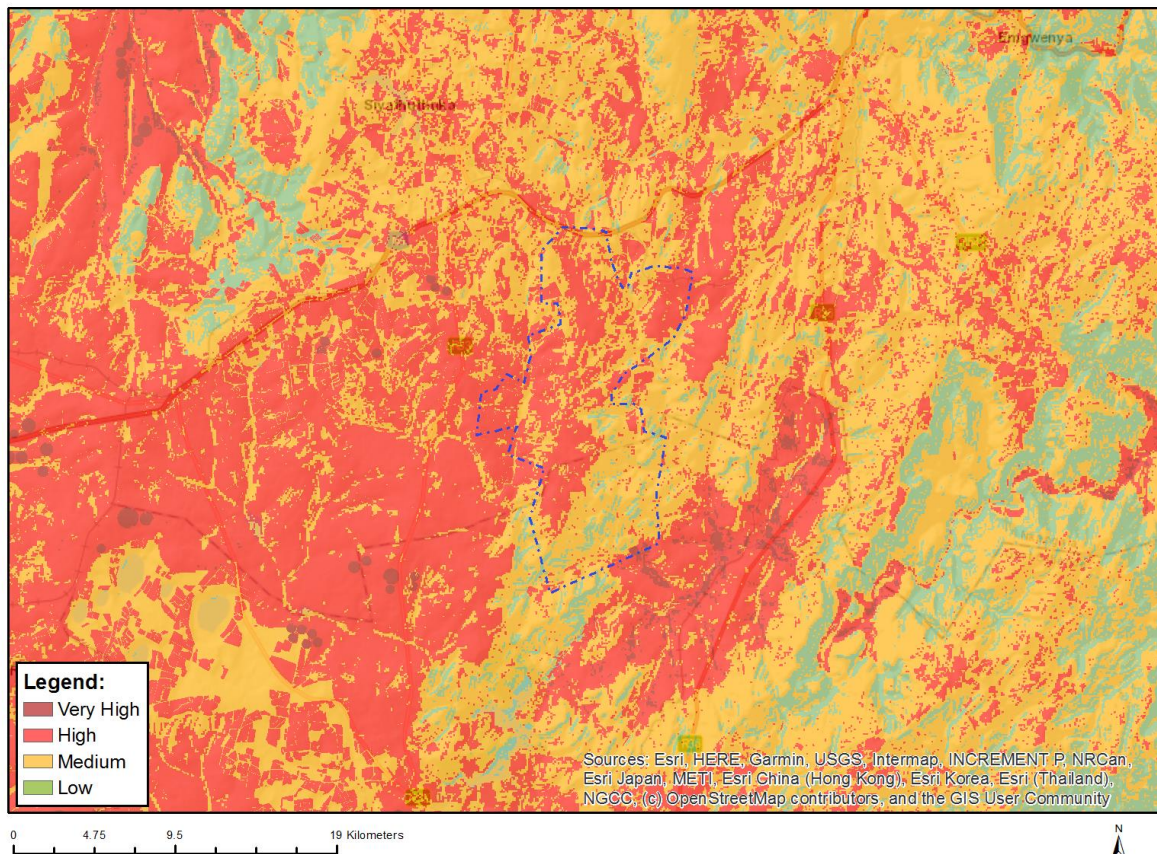
N	Specialist assessment	Assessment Protocol
1	Agricultural Impact Assessment	https://screening.environment.gov.za/ScreeningDownloads/AssessmentProtocols/Gazetted_WindAndSolar_Agriculture_Assessment_Protocols.pdf
2	Landscape/Visual Impact Assessment	https://screening.environment.gov.za/ScreeningDownloads/AssessmentProtocols/Gazetted_General_Requirement_Assessment_Protocols.pdf
3	Archaeological and Cultural Heritage Impact Assessment	https://screening.environment.gov.za/ScreeningDownloads/AssessmentProtocols/Gazetted_General_Requirement_Assessment_Protocols.pdf
4	Palaeontology Impact Assessment	https://screening.environment.gov.za/ScreeningDownloads/AssessmentProtocols/Gazetted_General_Requirement_Assessment_Protocols.pdf
5	Terrestrial Biodiversity Impact Assessment	https://screening.environment.gov.za/ScreeningDownloads/AssessmentProtocols/Gazetted_Terrestrial_Biodiversity_Assessment_Protocols.pdf

6	Aquatic Biodiversity Impact Assessment	https://screening.environment.gov.za/ScreeningDownloads/AssessmentProtocols/Gazetted Aquatic Biodiversity Assessment Protocols.pdf
7	Avian Impact Assessment	https://screening.environment.gov.za/ScreeningDownloads/AssessmentProtocols/Gazetted Avifauna Assessment Protocols.pdf
8	Civil Aviation Assessment	https://screening.environment.gov.za/ScreeningDownloads/AssessmentProtocols/Gazetted Civil Aviation Installations Assessment Protocols.pdf
9	Defense Assessment	https://screening.environment.gov.za/ScreeningDownloads/AssessmentProtocols/Gazetted Defence Installations Assessment Protocols.pdf
10	RFI Assessment	https://screening.environment.gov.za/ScreeningDownloads/AssessmentProtocols/Gazetted General Requirement Assessment Protocols.pdf
11	Noise Impact Assessment	https://screening.environment.gov.za/ScreeningDownloads/AssessmentProtocols/Gazetted Noise Impacts Assessment Protocol.pdf
12	Flicker Assessment	https://screening.environment.gov.za/ScreeningDownloads/AssessmentProtocols/Gazetted General Requirement Assessment Protocols.pdf
13	Traffic Impact Assessment	https://screening.environment.gov.za/ScreeningDownloads/AssessmentProtocols/Gazetted General Requirement Assessment Protocols.pdf
14	Geotechnical Assessment	https://screening.environment.gov.za/ScreeningDownloads/AssessmentProtocols/Gazetted General Requirement Assessment Protocols.pdf
15	Socio-Economic Assessment	https://screening.environment.gov.za/ScreeningDownloads/AssessmentProtocols/Gazetted General Requirement Assessment Protocols.pdf
16	Plant Species Assessment	https://screening.environment.gov.za/ScreeningDownloads/AssessmentProtocols/Gazetted Plant Species Assessment Protocols.pdf
17	Animal Species Assessment	https://screening.environment.gov.za/ScreeningDownloads/AssessmentProtocols/Gazetted Animal Species Assessment Protocols.pdf

Results of the environmental sensitivity of the proposed area.

The following section represents the results of the screening for environmental sensitivity of the proposed site for relevant environmental themes associated with the project classification. It is the duty of the EAP to ensure that the environmental themes provided by the screening tool are comprehensive and complete for the project. Refer to the disclaimer.

MAP OF RELATIVE AGRICULTURE THEME SENSITIVITY



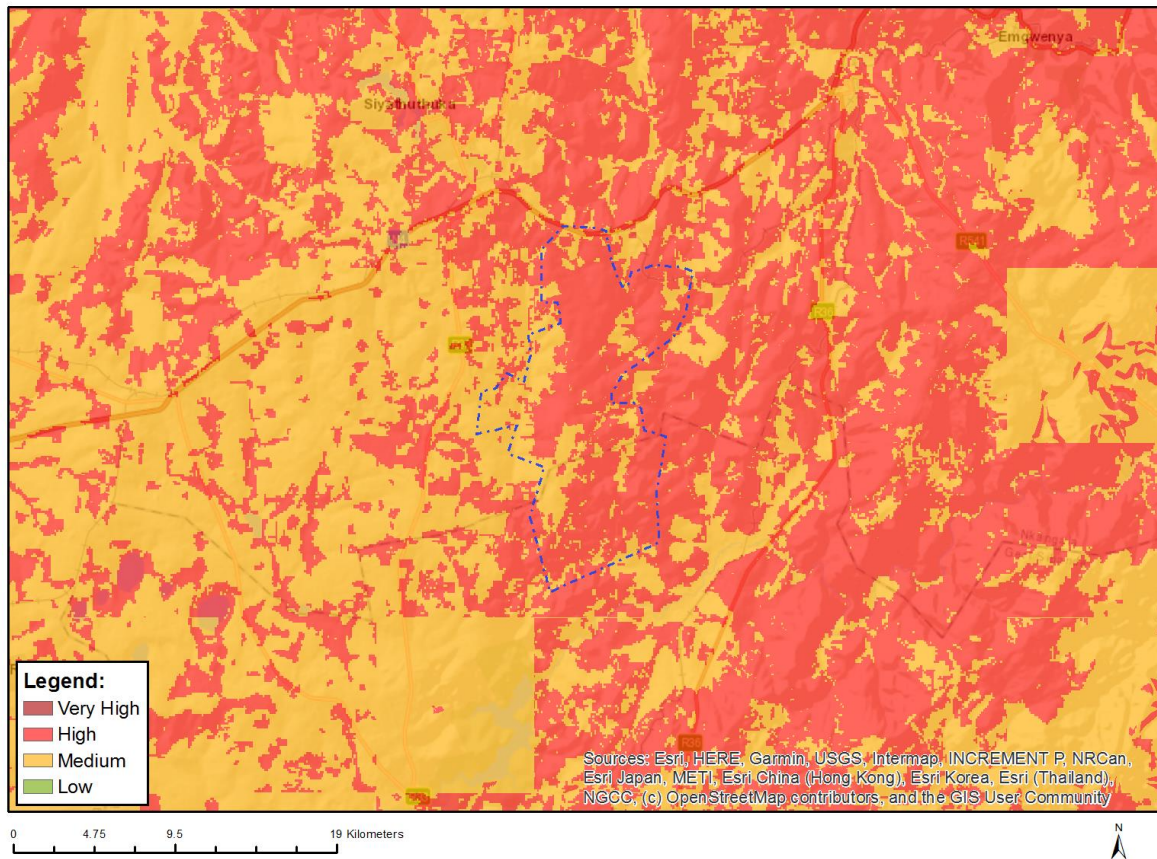
Very High sensitivity	High sensitivity	Medium sensitivity	Low sensitivity
X			

Sensitivity Features:

Sensitivity	Feature(s)
High	Land capability;09. Moderate-High/10. Moderate-High
High	Annual Crop Cultivation / Planted Pastures Rotation;Land capability;06. Low-Moderate/07. Low-Moderate/08. Moderate
High	Annual Crop Cultivation / Planted Pastures Rotation;Land capability;09. Moderate-High/10. Moderate-High
High	Old Fields;Land capability;09. Moderate-High/10. Moderate-High
High	Old Fields;Land capability;06. Low-Moderate/07. Low-Moderate/08. Moderate
High	Annual Crop Cultivation / Planted Pastures Rotation;Land capability;01. Very low/02. Very low/03. Low-Very low/04. Low-Very low/05. Low
Low	Land capability;01. Very low/02. Very low/03. Low-Very low/04. Low-Very low/05. Low

Medium	Land capability;06. Low-Moderate/07. Low-Moderate/08. Moderate
Very High	Land capability;11. High/12. High-Very high/13. High-Very high/14. Very high/15. Very high

MAP OF RELATIVE ANIMAL SPECIES THEME SENSITIVITY



Where only a sensitive plant unique number or sensitive animal unique number is provided in the screening report and an assessment is required, the environmental assessment practitioner (EAP) or specialist is required to email SANBI at eiadatarequests@sanbi.org.za listing all sensitive species with their unique identifiers for which information is required. The name has been withheld as the species may be prone to illegal harvesting and must be protected. SANBI will release the actual species name after the details of the EAP or specialist have been documented.

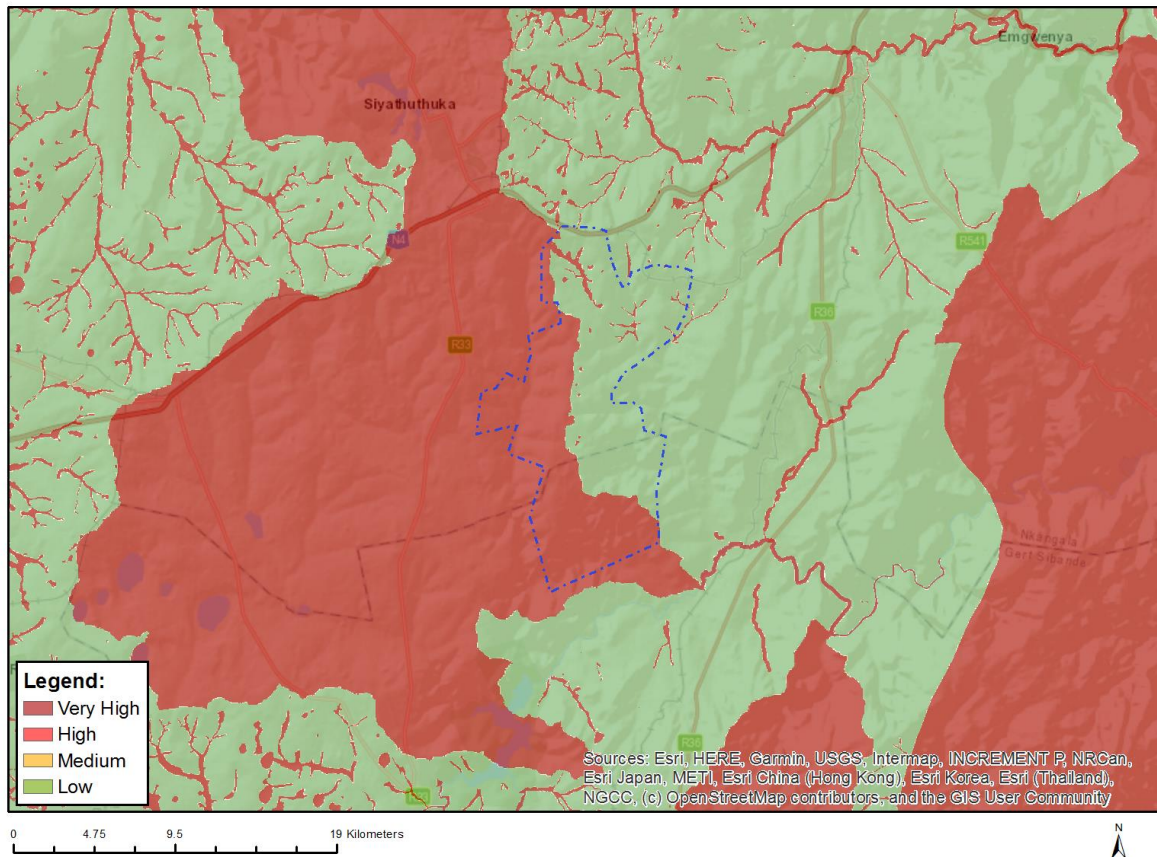
Very High sensitivity	High sensitivity	Medium sensitivity	Low sensitivity
	X		

Sensitivity Features:

Sensitivity	Feature(s)
High	Aves-Turnix nanus
High	Aves-Neotis denhami
High	Aves-Geronticus calvus
High	Aves-Anthus brachyurus
High	Aves-Eupodotis senegalensis
High	Aves-Grus carunculata
High	Aves-Circus ranivorus
High	Aves-Sylvia nigricapillus
High	Aves-Balearica regulorum
High	Aves-Polemaetus bellicosus

High	Aves-Sagittarius serpentarius
High	Aves-Anthus chloris
High	Mammalia-Hydrictis maculicollis
Medium	Aves-Circus ranivorus
Medium	Aves-Turnix nanus
Medium	Aves-Neotis denhami
Medium	Aves-Anthus chloris
Medium	Aves-Balearica regulorum
Medium	Aves-Sagittarius serpentarius
Medium	Aves-Geronticus calvus
Medium	Aves-Eupodotis senegalensis
Medium	Aves-Grus carunculata
Medium	Sensitive species 23
Medium	Mammalia-Amblysomus robustus
Medium	Mammalia-Chrysospalax villosus
Medium	Mammalia-Crocidura maquassiensis
Medium	Mammalia-Hydrictis maculicollis
Medium	Mammalia-Ourebia ourebi ourebi
Medium	Invertebrate-Doratogonus furculifer

MAP OF RELATIVE AQUATIC BIODIVERSITY THEME SENSITIVITY

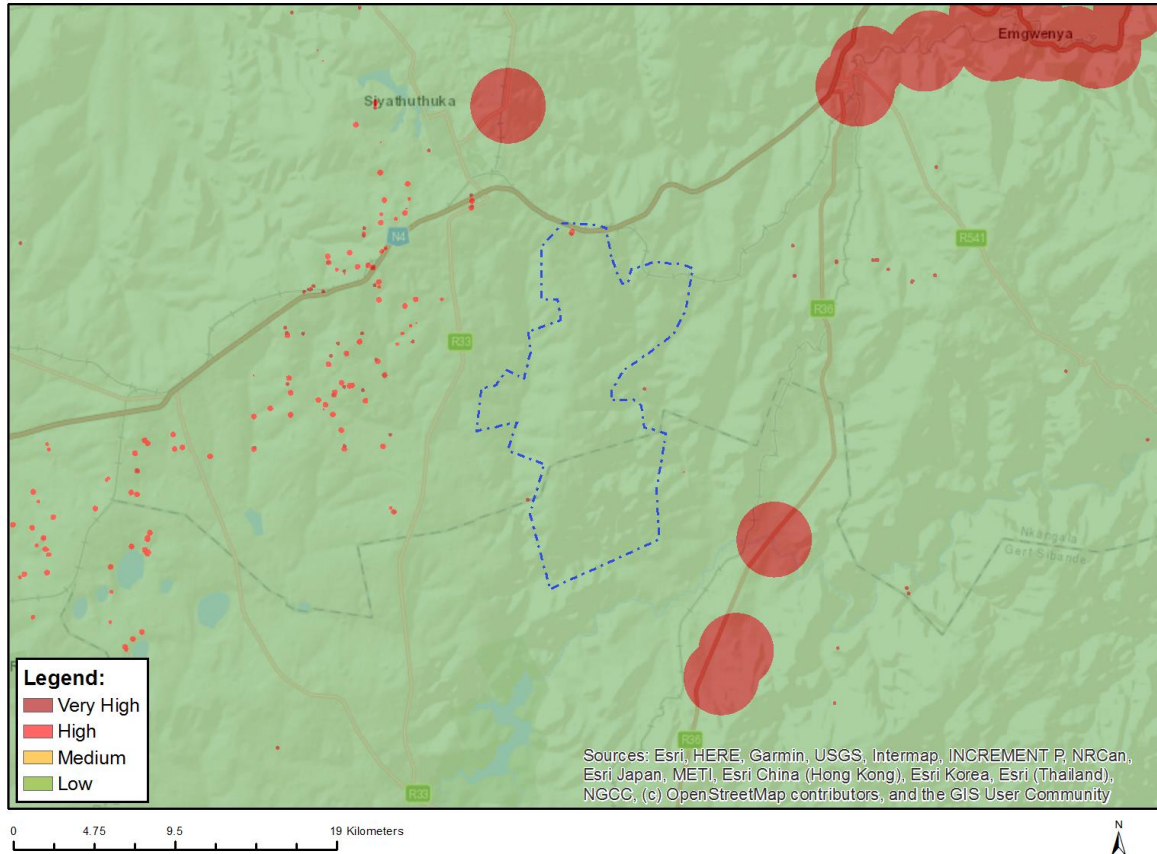


Very High sensitivity	High sensitivity	Medium sensitivity	Low sensitivity
X			

Sensitivity Features:

Sensitivity	Feature(s)
Low	Low sensitivity
Very High	Aquatic CBAs
Very High	Wetlands and Estuaries
Very High	Freshwater ecosystem priority area quinary catchments

MAP OF RELATIVE ARCHAEOLOGICAL AND CULTURAL HERITAGE THEME SENSITIVITY

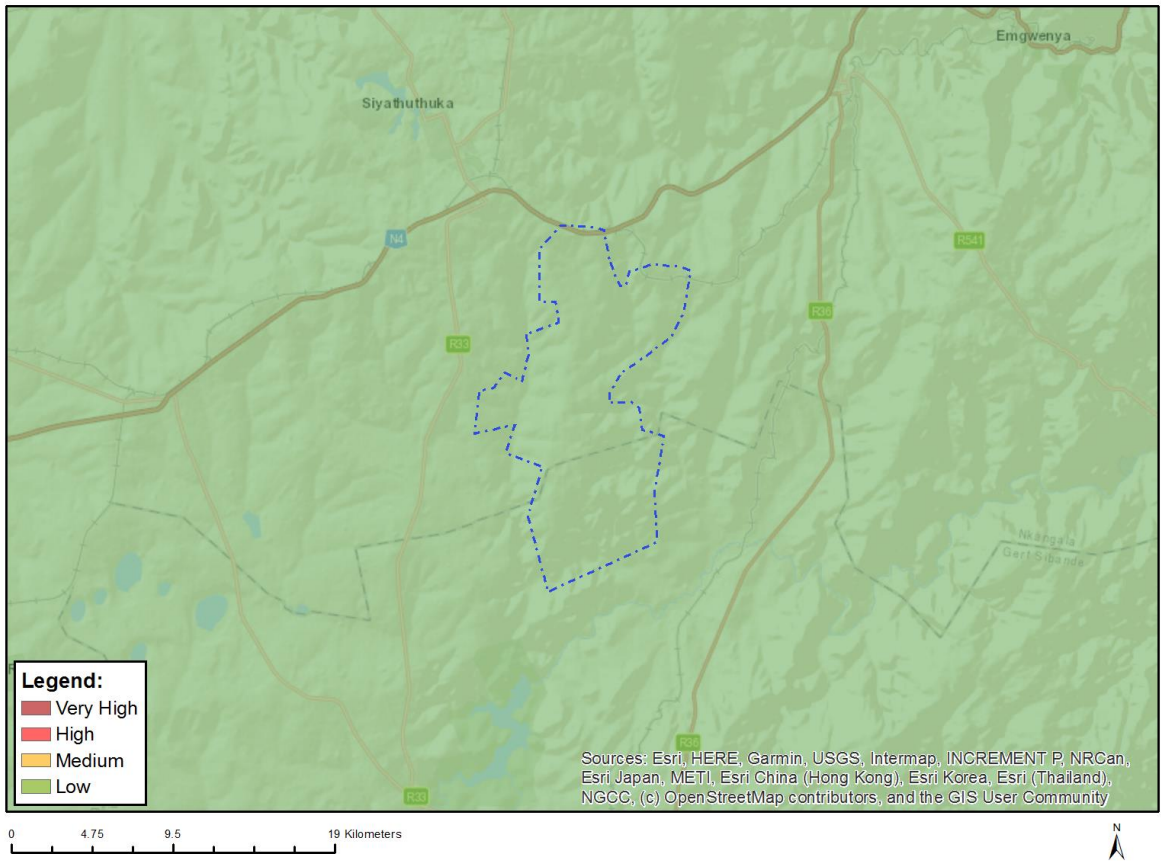


Very High sensitivity	High sensitivity	Medium sensitivity	Low sensitivity
X			

Sensitivity Features:

Sensitivity	Feature(s)
High	Within 150m of a Grade IIIa Heritage site
Low	Low sensitivity
Very High	Within 100m of an Ungraded Heritage site

MAP OF RELATIVE AVIAN (WIND) THEME SENSITIVITY

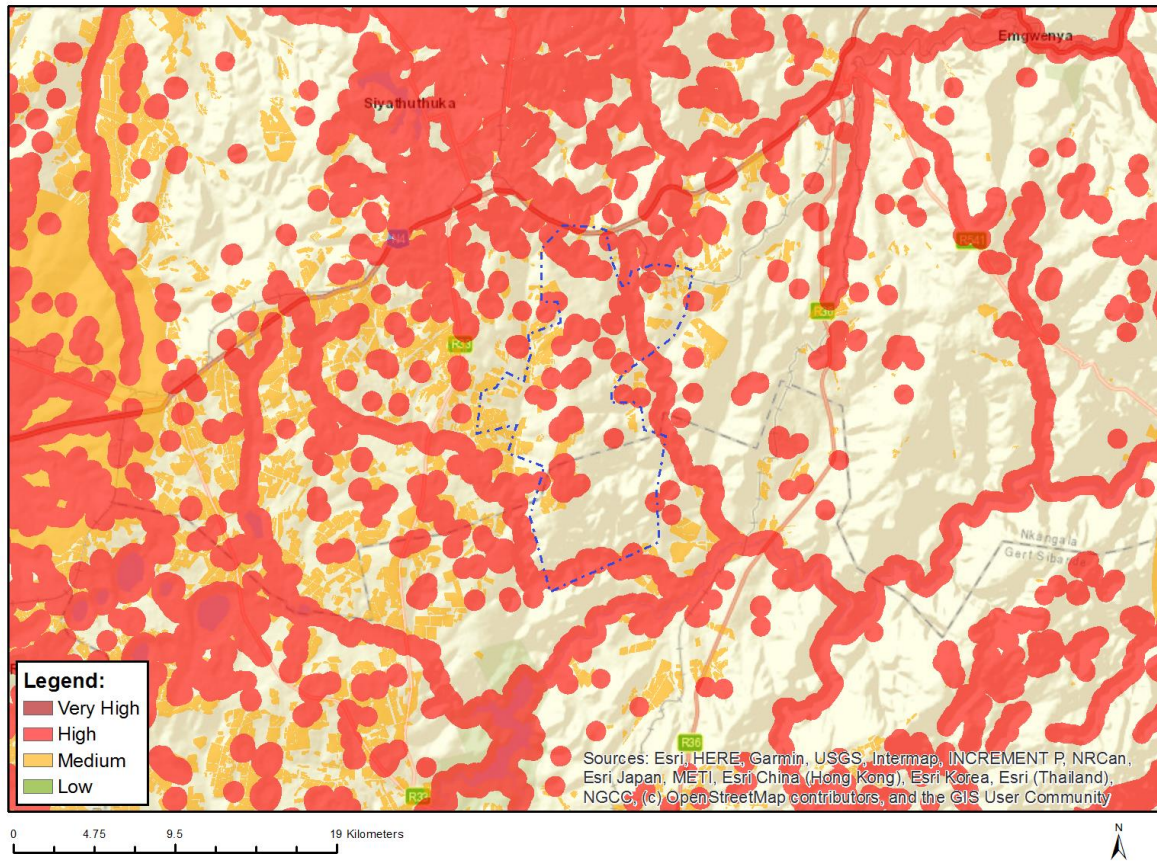


Very High sensitivity	High sensitivity	Medium sensitivity	Low sensitivity
			X

Sensitivity Features:

Sensitivity	Feature(s)
Low	Area Outside Sensitivities

MAP OF RELATIVE BATS (WIND) THEME SENSITIVITY

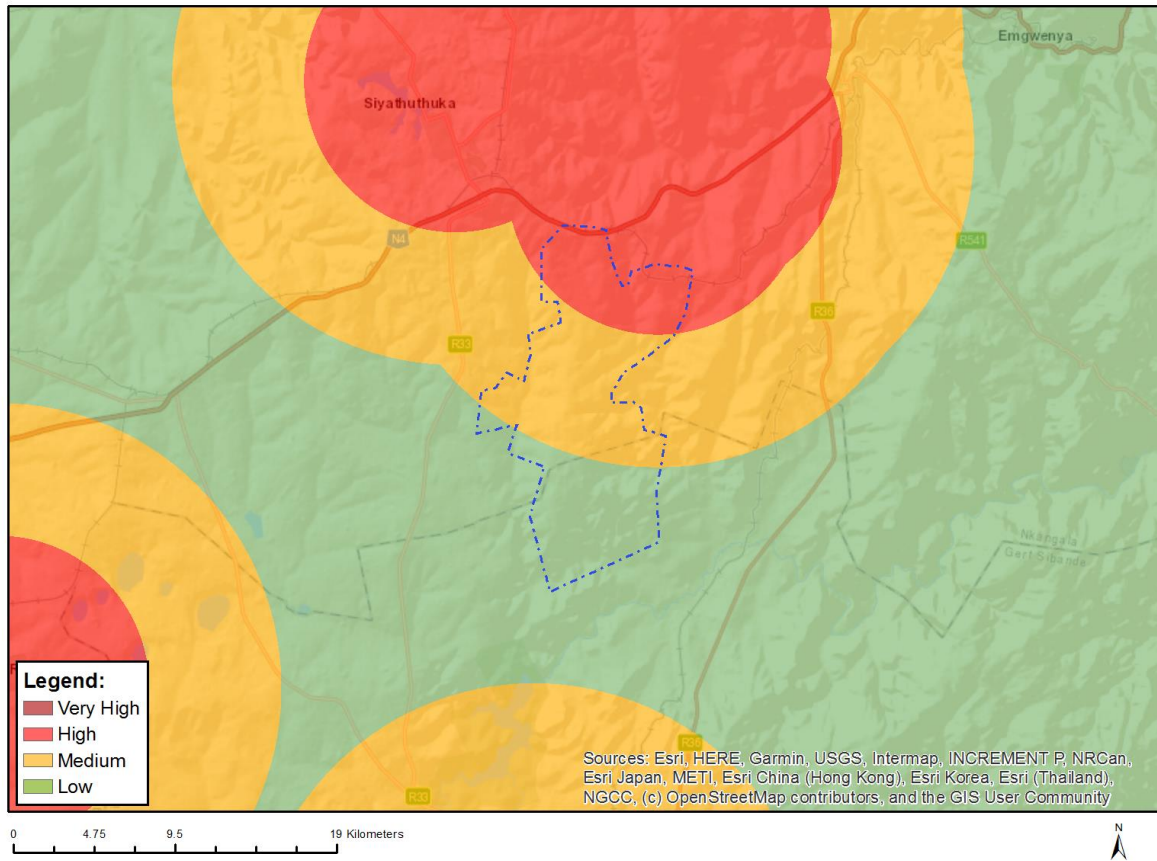


Very High sensitivity	High sensitivity	Medium sensitivity	Low sensitivity
	X		

Sensitivity Features:

Sensitivity	Feature(s)
High	Within 500 m of a river
High	Wetland
High	Within 500 m of a wetland
Medium	Croplands

MAP OF RELATIVE CIVIL AVIATION (WIND) THEME SENSITIVITY

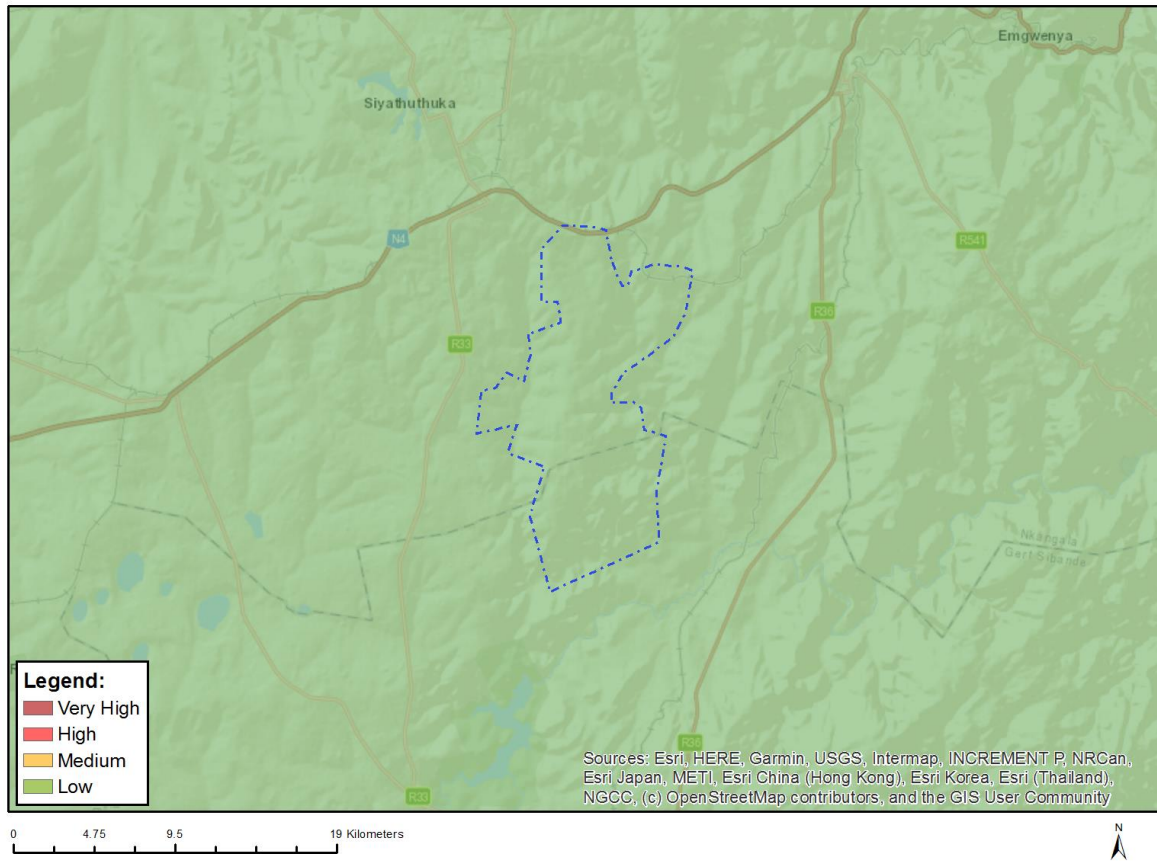


Very High sensitivity	High sensitivity	Medium sensitivity	Low sensitivity
	X		

Sensitivity Features:

Sensitivity	Feature(s)
High	Within 8 km of other civil aviation aerodrome
Low	Low sensitivity
Medium	Between 8 and 15 km of other civil aviation aerodrome

MAP OF RELATIVE DEFENCE (WIND) THEME SENSITIVITY

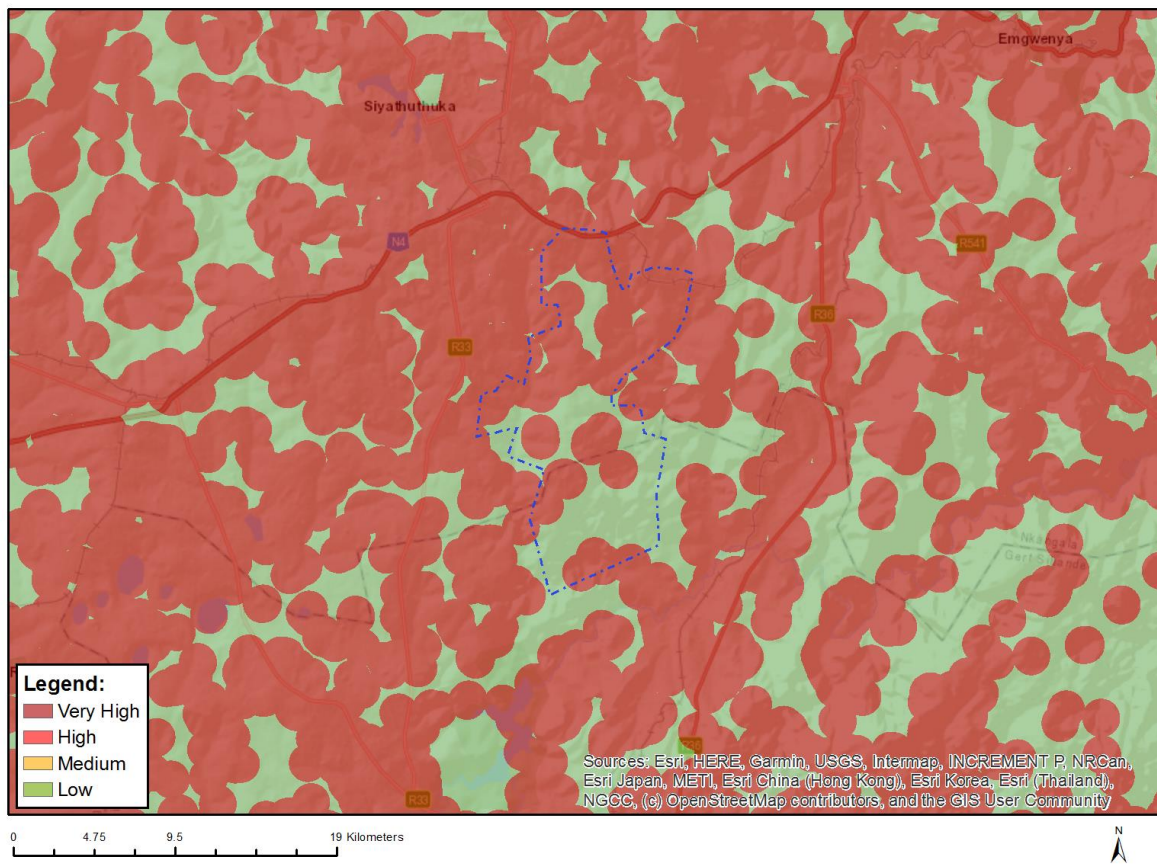


Very High sensitivity	High sensitivity	Medium sensitivity	Low sensitivity
			X

Sensitivity Features:

Sensitivity	Feature(s)
Low	Low sensitivity

MAP OF RELATIVE FLICKER THEME SENSITIVITY

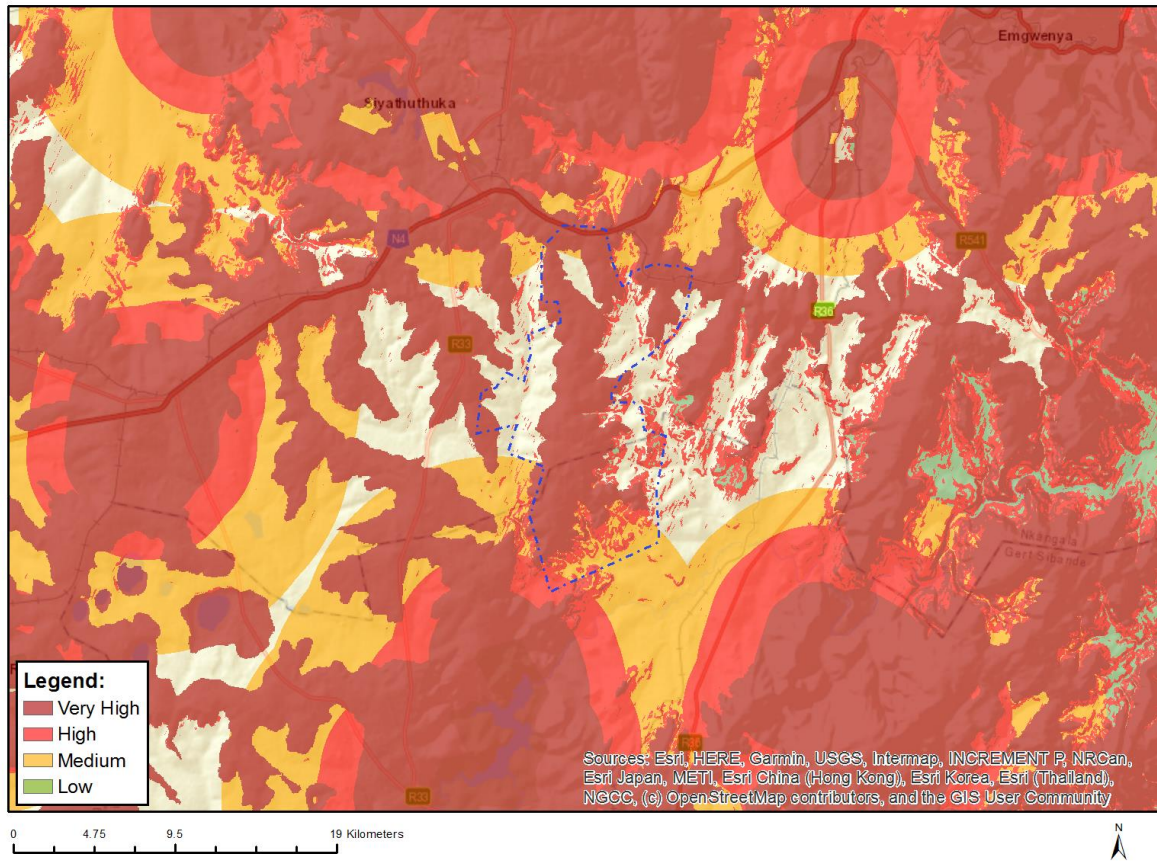


Very High sensitivity	High sensitivity	Medium sensitivity	Low sensitivity
X			

Sensitivity Features:

Sensitivity	Feature(s)
Low	Area of low sensitivity
Very High	Potential temporarily or permanently inhabited residence

MAP OF RELATIVE LANDSCAPE (WIND) THEME SENSITIVITY

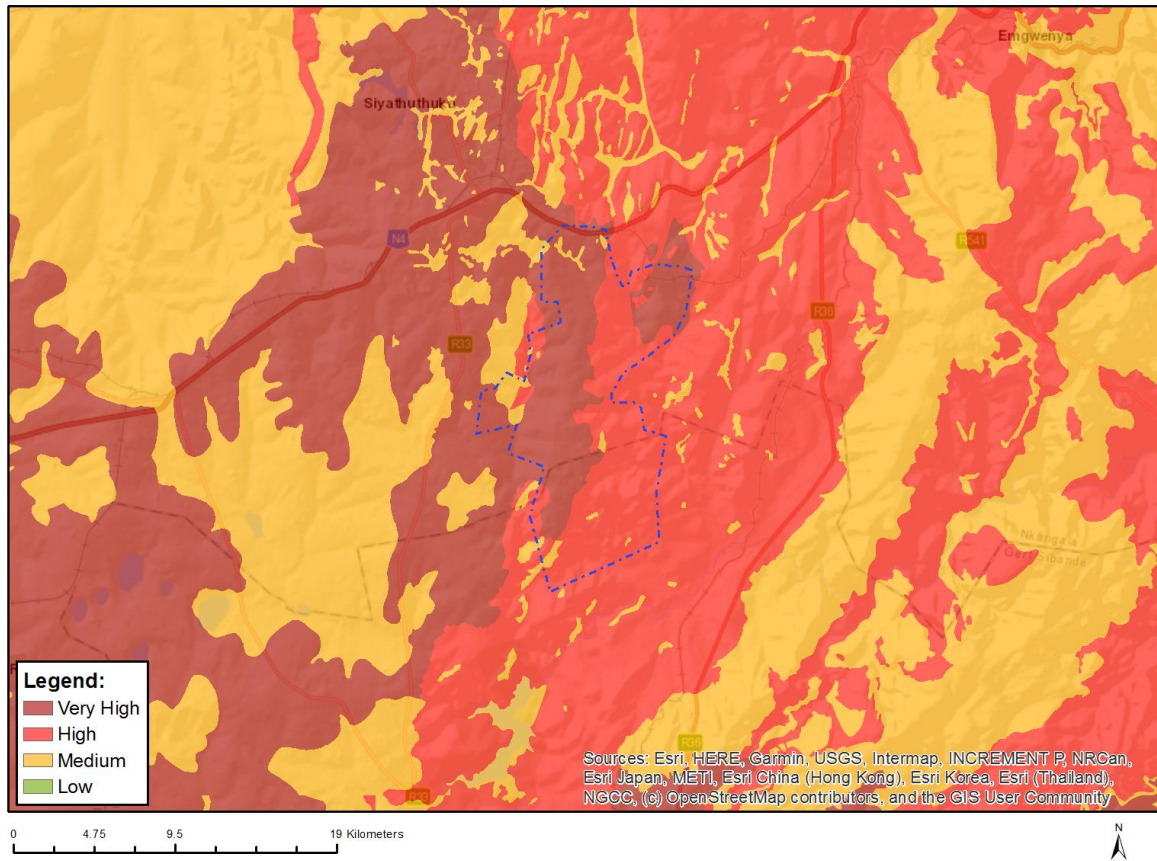


Very High sensitivity	High sensitivity	Medium sensitivity	Low sensitivity
X			

Sensitivity Features:

Sensitivity	Feature(s)
High	Between 3 and 5 km of a nature reserve, botanical garden or other protected area
High	Slope between 1:4 and 1:10
Low	Slope less than 1:10
Medium	Between 4 and 6 km of a town or village
Medium	Between 5 and 10 km of a nature reserve, botanical garden or other protected area
Very High	Mountain tops and high ridges
Very High	Slope more than 1:4

MAP OF RELATIVE PALEONTOLOGY THEME SENSITIVITY

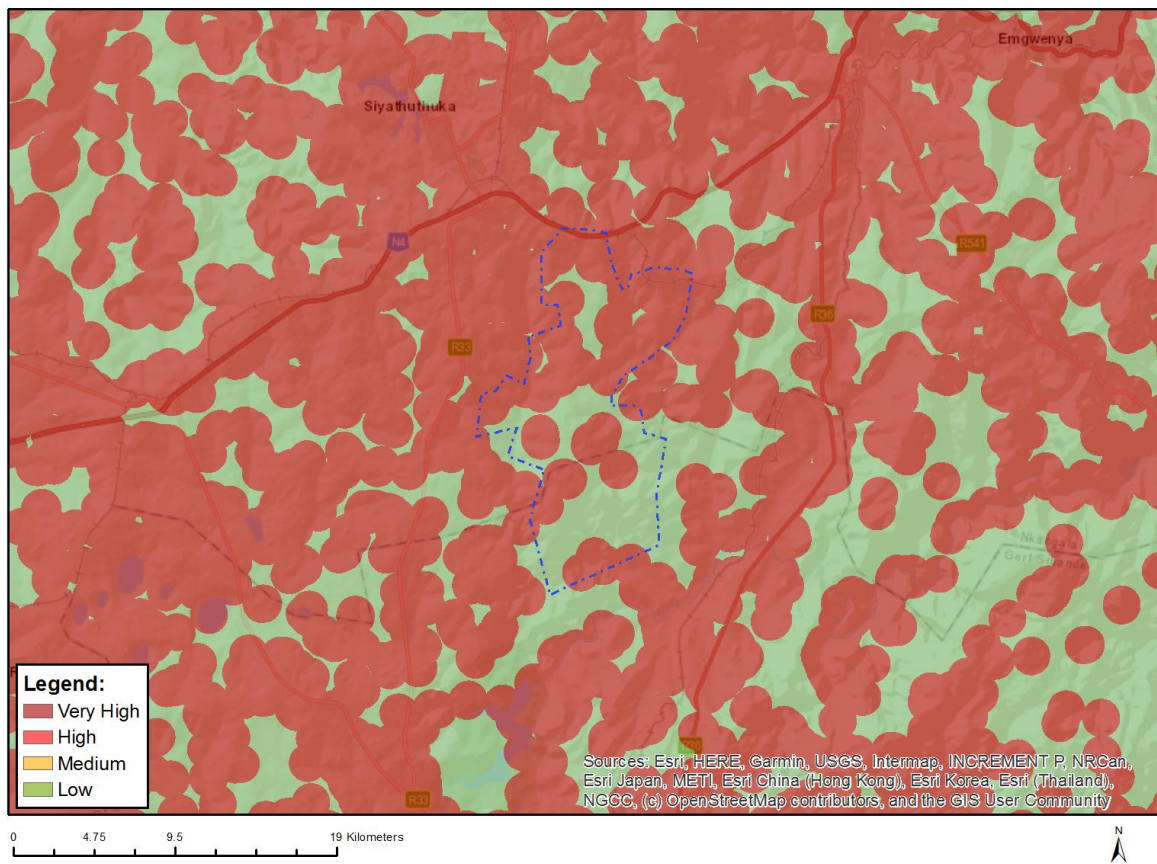


Very High sensitivity	High sensitivity	Medium sensitivity	Low sensitivity
X			

Sensitivity Features:

Sensitivity	Feature(s)
High	Features with a High paleontological sensitivity
Medium	Features with a Medium paleontological sensitivity
Very High	Features with a Very High paleontological sensitivity

MAP OF RELATIVE NOISE THEME SENSITIVITY

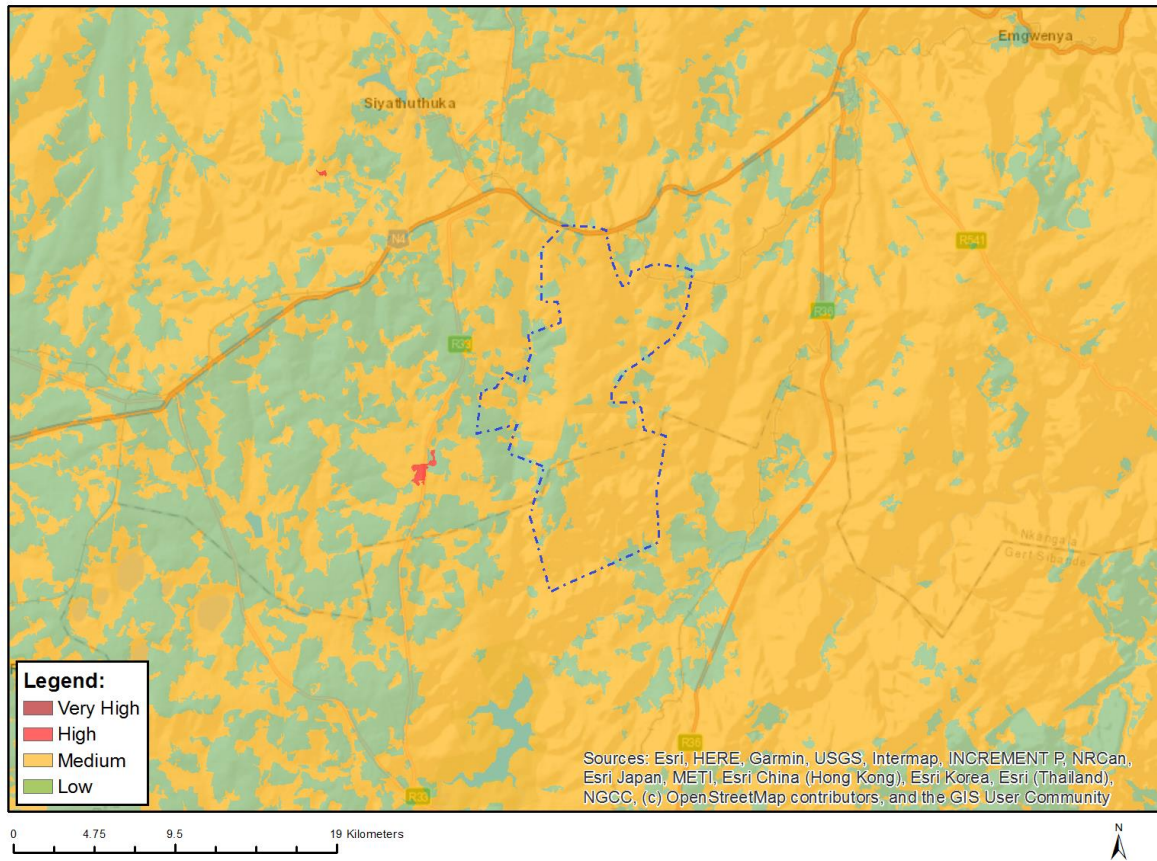


Very High sensitivity	High sensitivity	Medium sensitivity	Low sensitivity
X			

Sensitivity Features:

Sensitivity	Feature(s)
Low	Area of low sensitivity
Very High	Potential temporarily or permanently inhabited residence

MAP OF RELATIVE PLANT SPECIES THEME SENSITIVITY



Where only a sensitive plant unique number or sensitive animal unique number is provided in the screening report and an assessment is required, the environmental assessment practitioner (EAP) or specialist is required to email SANBI at eiadatarequests@sanbi.org.za listing all sensitive species with their unique identifiers for which information is required. The name has been withheld as the species may be prone to illegal harvesting and must be protected. SANBI will release the actual species name after the details of the EAP or specialist have been documented.

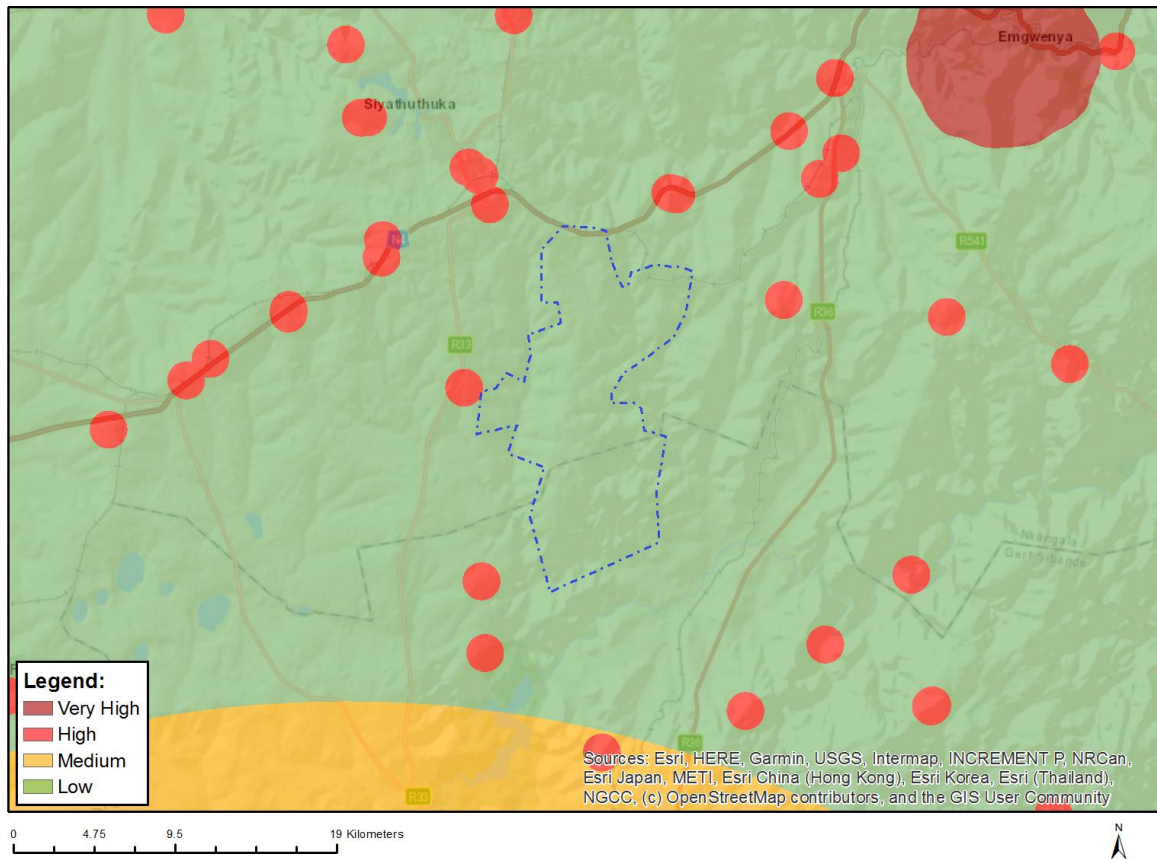
Very High sensitivity	High sensitivity	Medium sensitivity	Low sensitivity
		X	

Sensitivity Features:

Sensitivity	Feature(s)
Low	Low Sensitivity
Medium	Sensitive species 1252
Medium	Khadia carolinensis
Medium	Sensitive species 1201
Medium	Sensitive species 979
Medium	Asclepias dissona
Medium	Miraglossum davyi
Medium	Cymbopappus piliferus
Medium	Streptocarpus denticulatus
Medium	Streptocarpus latens
Medium	Khadia alticola
Medium	Sensitive species 41
Medium	Sensitive species 691

Medium	Sensitive species 998
Medium	Sensitive species 1219
Medium	Sensitive species 311
Medium	Sensitive species 313
Medium	Pachycarpus suaveolens
Medium	Sensitive species 1086
Medium	Sensitive species 321
Medium	Hesperantha bulbifera

MAP OF RELATIVE RFI (WIND) THEME SENSITIVITY

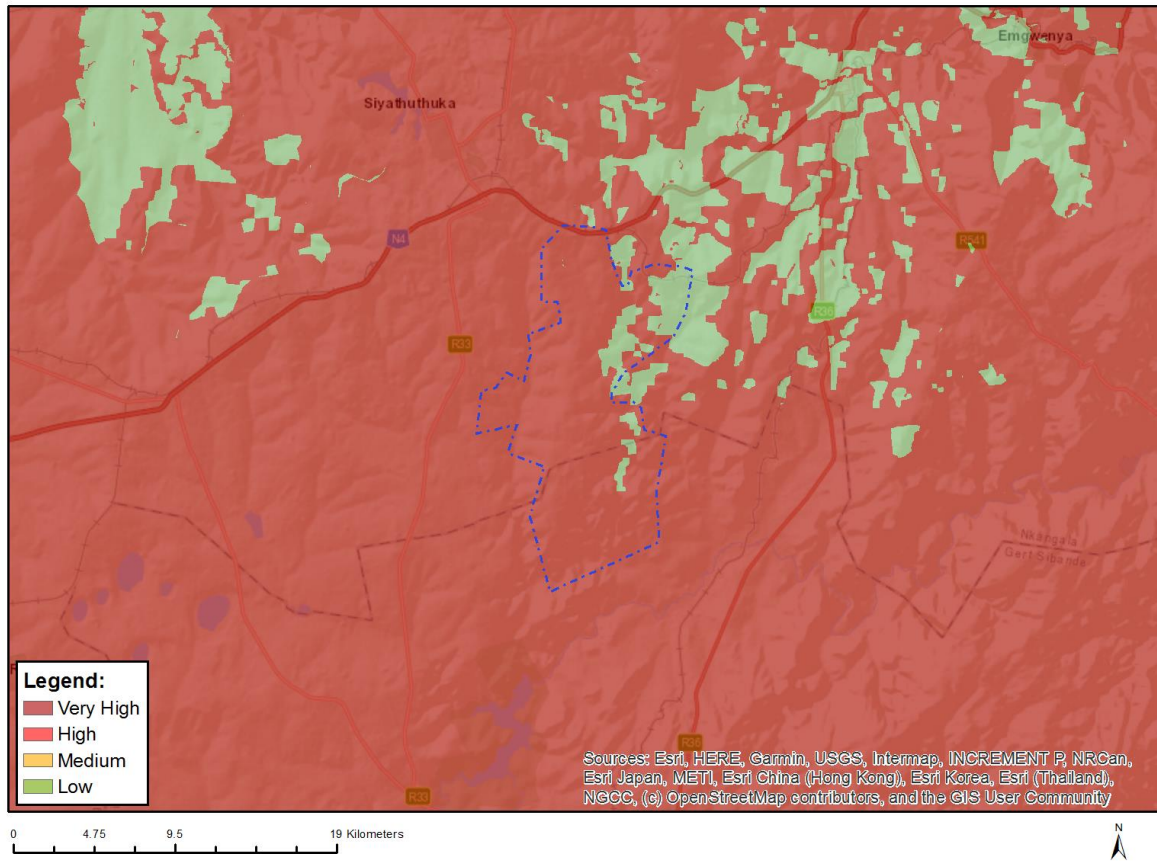


Very High sensitivity	High sensitivity	Medium sensitivity	Low sensitivity
	X		

Sensitivity Features:

Sensitivity	Feature(s)
High	Within 1 km of a telecommunication facility;None;More than 60 km from a Weather Radar installation
Low	Low sensitivity for telecommunications;None;More than 60 km from a Weather Radar installation

MAP OF RELATIVE TERRESTRIAL BIODIVERSITY THEME SENSITIVITY



Very High sensitivity	High sensitivity	Medium sensitivity	Low sensitivity
X			

Sensitivity Features:

Sensitivity	Feature(s)
Low	Low Sensitivity
Very High	Critical biodiversity area 1
Very High	Critical biodiversity area 2
Very High	Ecological support area: landscape corridor
Very High	Ecological support area: local corridor
Very High	FEPA Subcatchments
Very High	Protected Areas Expansion Strategy
Very High	Endangered ecosystem
Very High	Vulnerable ecosystem