

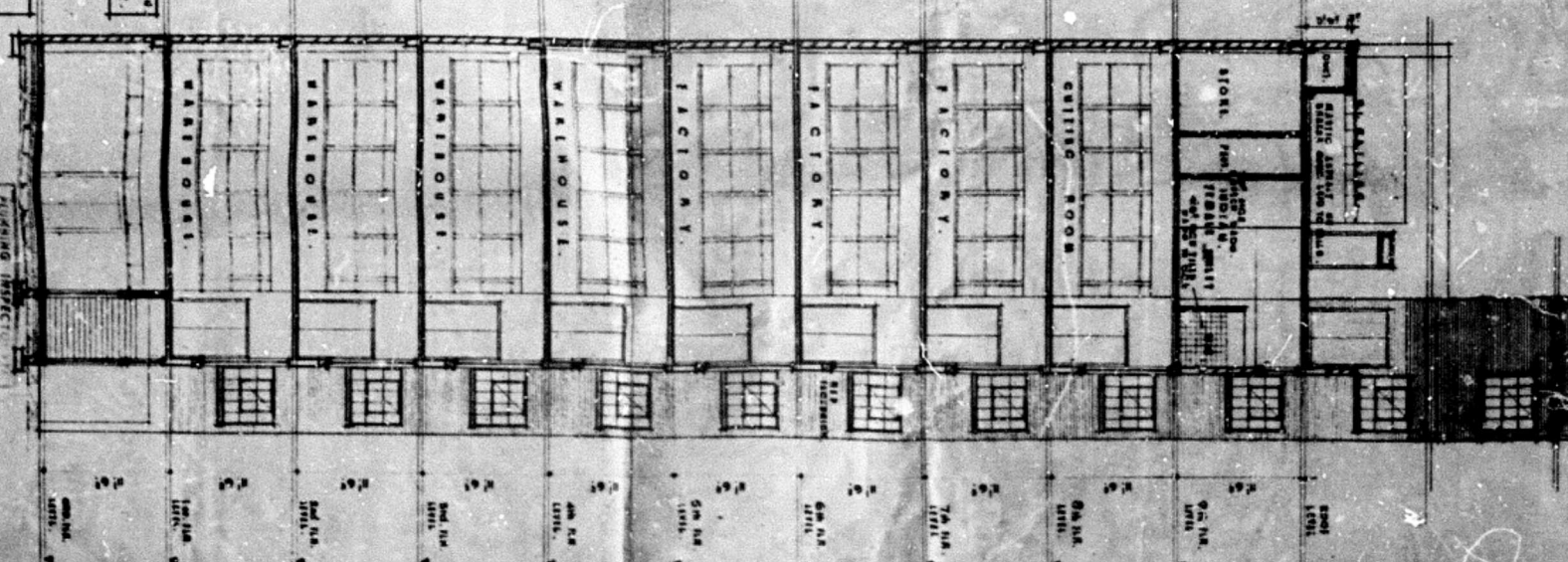
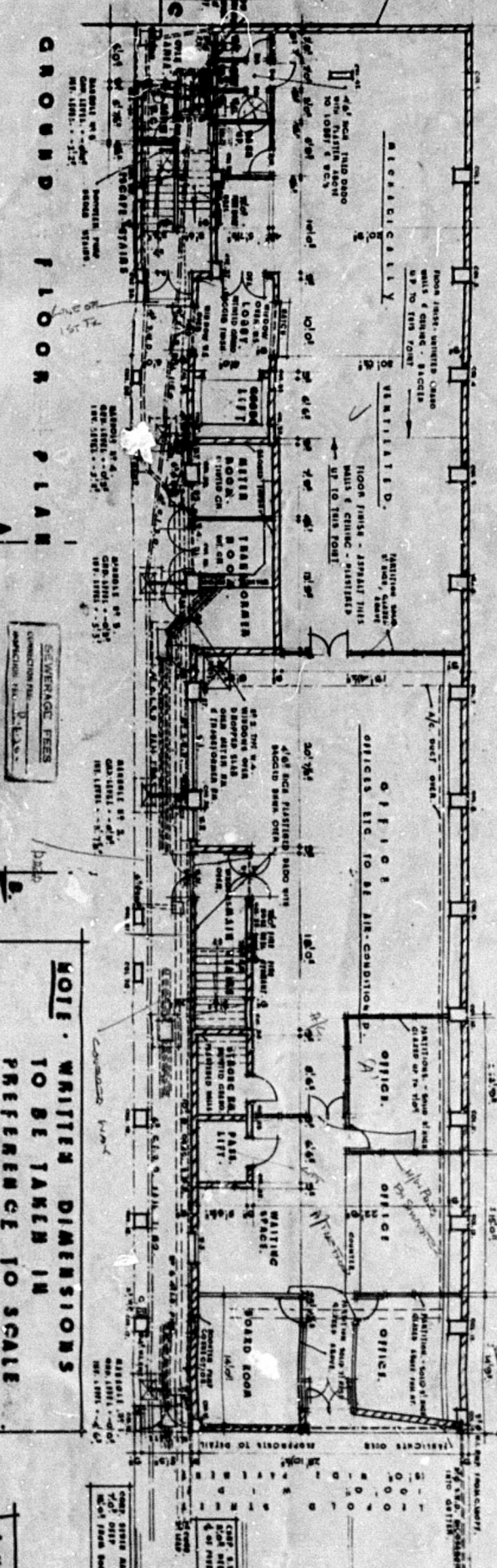
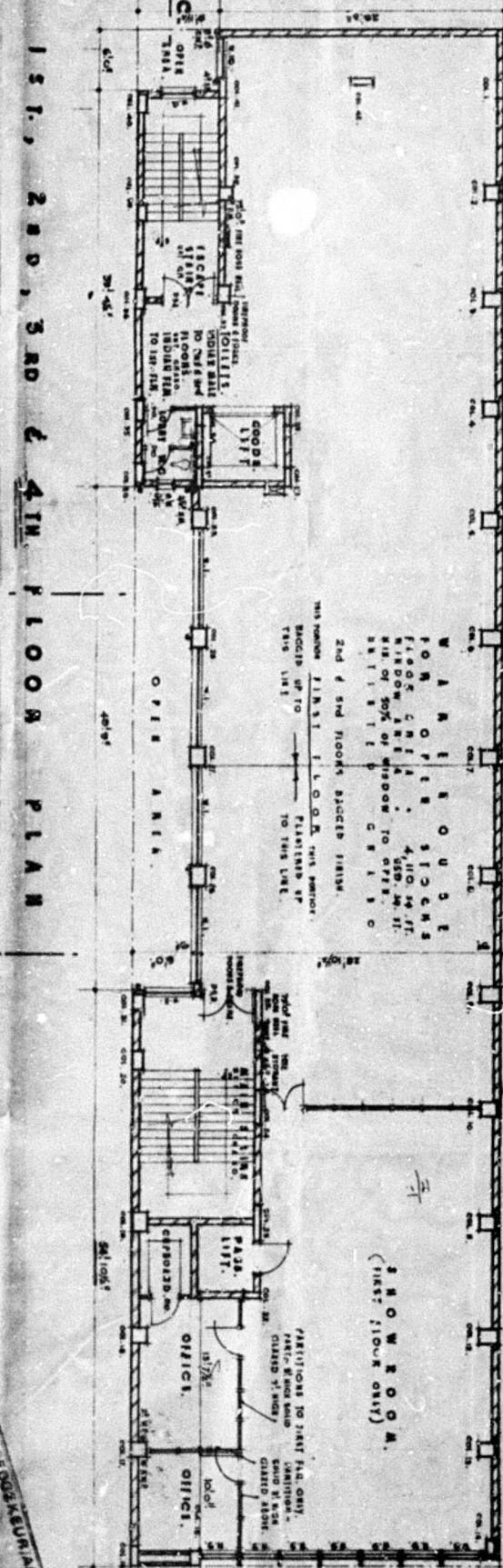
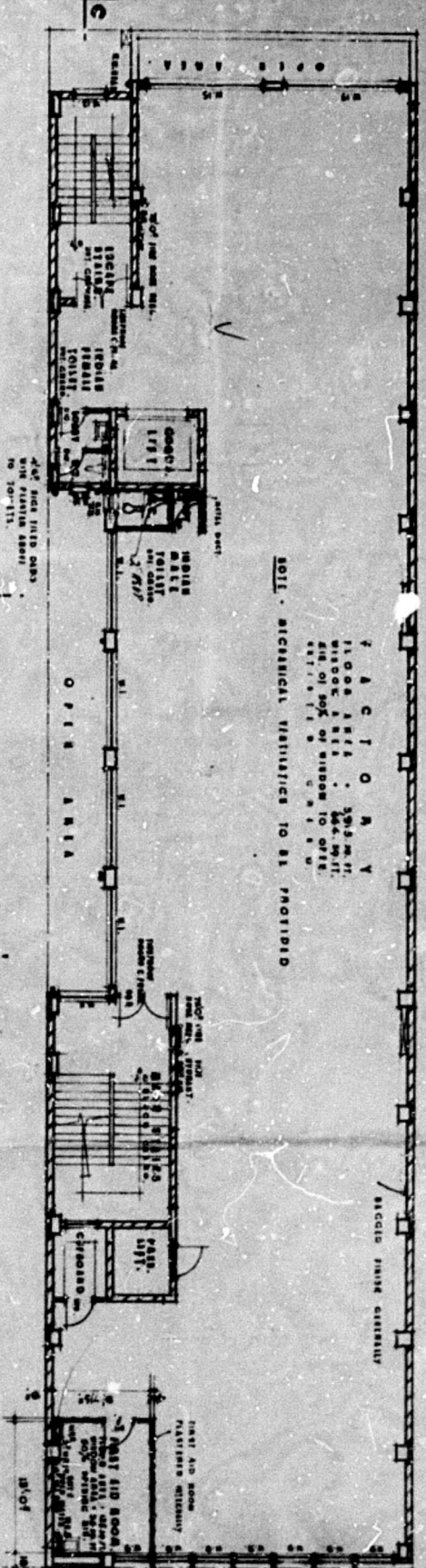
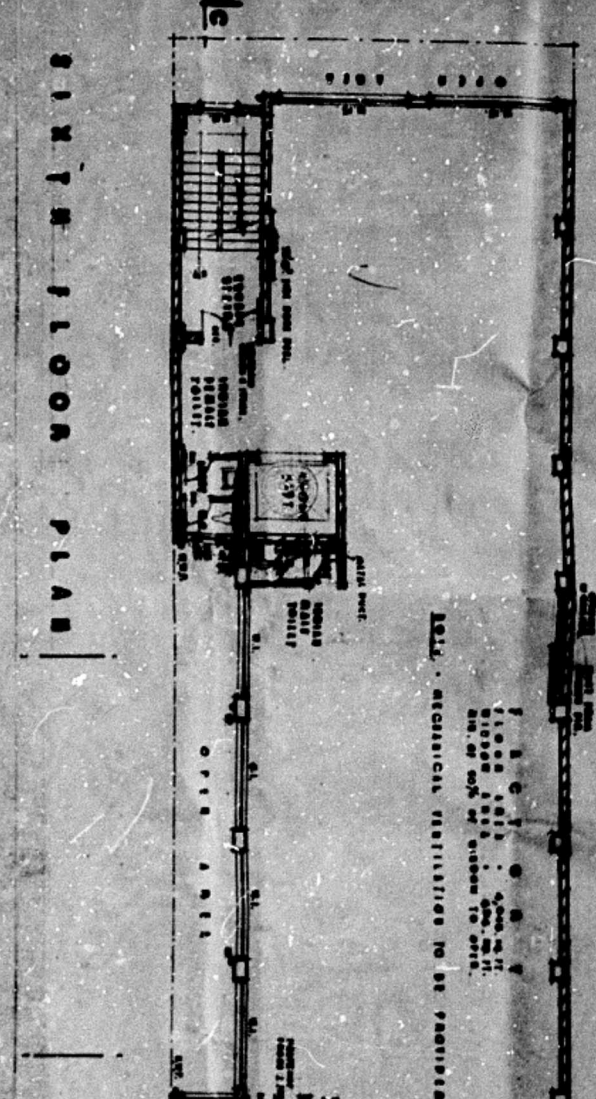
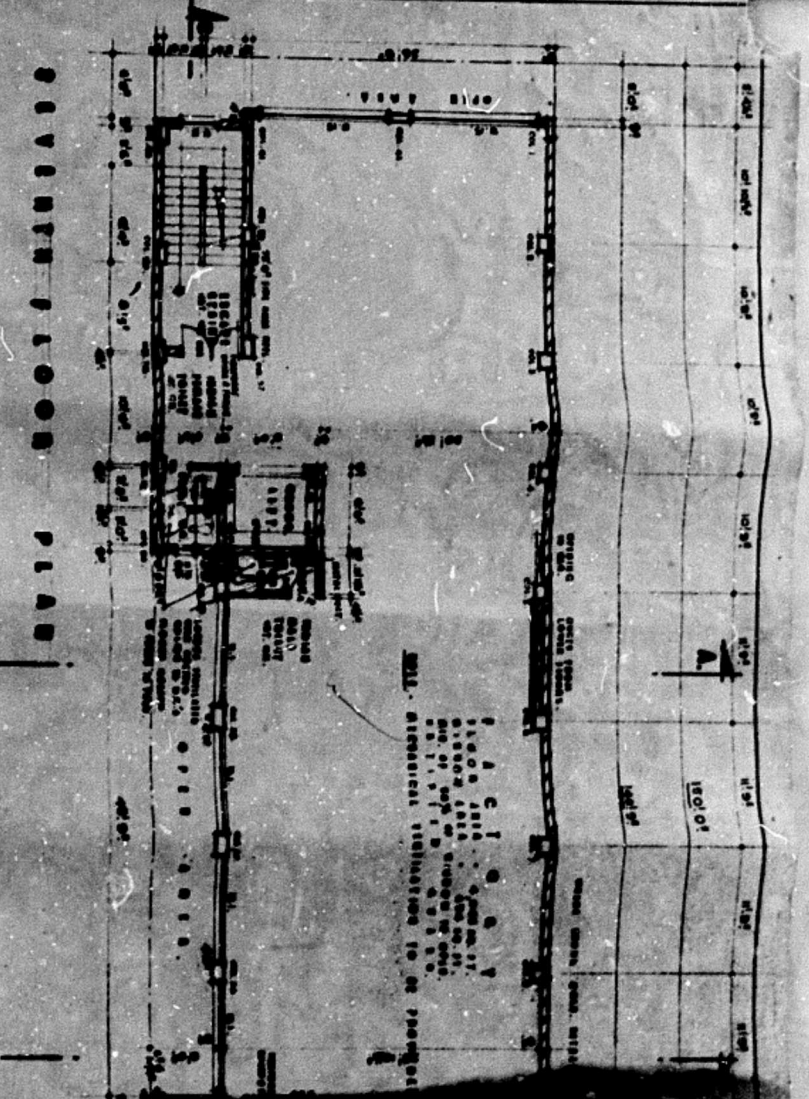
GROUP AREA DEVELOPMENT ACT.
 No. 49 of 1955.
 Assent is granted in terms of the Group Area Development Act, 1955, in respect of the Group Area Development Scheme proposed in the Group Area Development Board Report No. 27 of 1955.

GROUP AREA ACT.
 No. 27 of 1955.
 Assent is granted in terms of the Group Area Act, 1955, in respect of the Group Area Development Scheme proposed in the Group Area Development Board Report No. 27 of 1955.

87/5 CLUTHAM STREET
 WHITWATER AND FURNACE
 CLUTHAM FLOOR
 1ST TO 3RD FLOOR
 FURNACE - FIFTH - SIXTH FLOOR
 SECTIONS

CITY OF DUNEDIN
 PLANS APPROVED
 29/9/55
 A. KIRKMAN
 CITY ENGINEER

WORKING DRAWINGS PROVIDED FOR THE PROPOSED CLOTHING FACTORY AT 87/5 CLUTHAM STREET, DUNEDIN.
 DRAWN BY: [Signature]
 CHECKED BY: [Signature]
 APPROVED BY: [Signature]
 DATE: 29/9/55



CITY OF DURBAN
 PLANS APPROVED
 No. 9265 - 5 MAY 1961
 A. KINMONT
 CIVIL ENGINEER

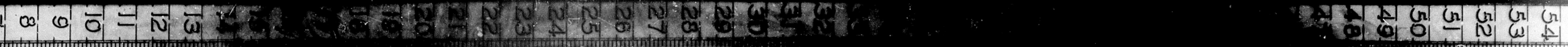
B.
 27 Level 55
 Various Bays
 Noo 1 Floor
 Ground Floor
 First to Fourth Floor
 Fifth Floor
 Sixth Floor
 Seventh Floor

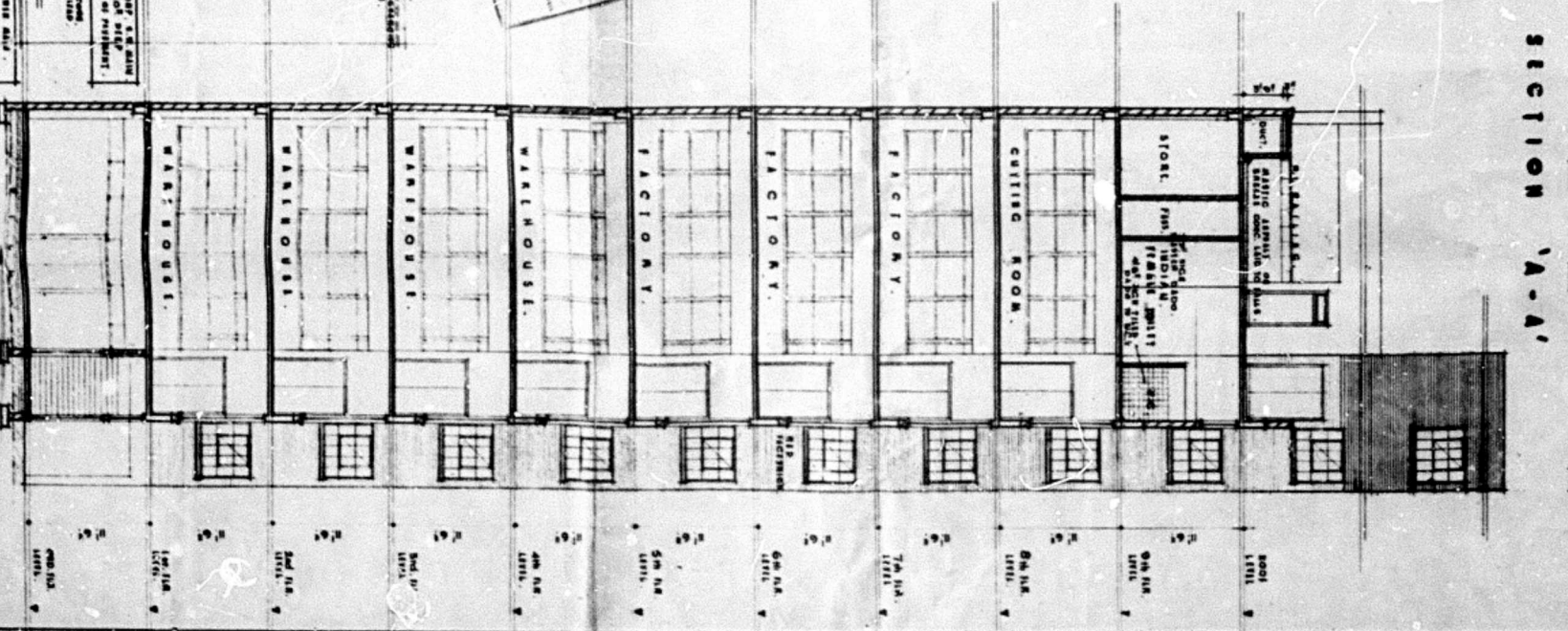
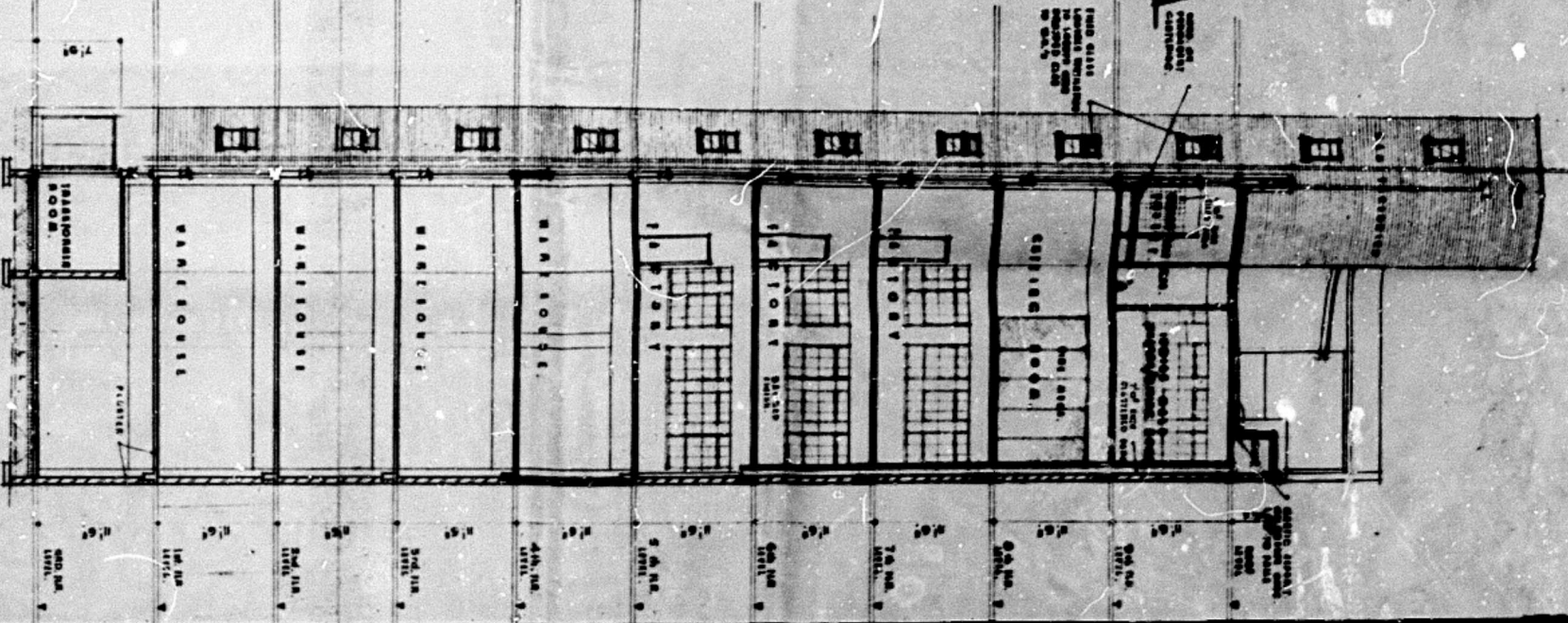
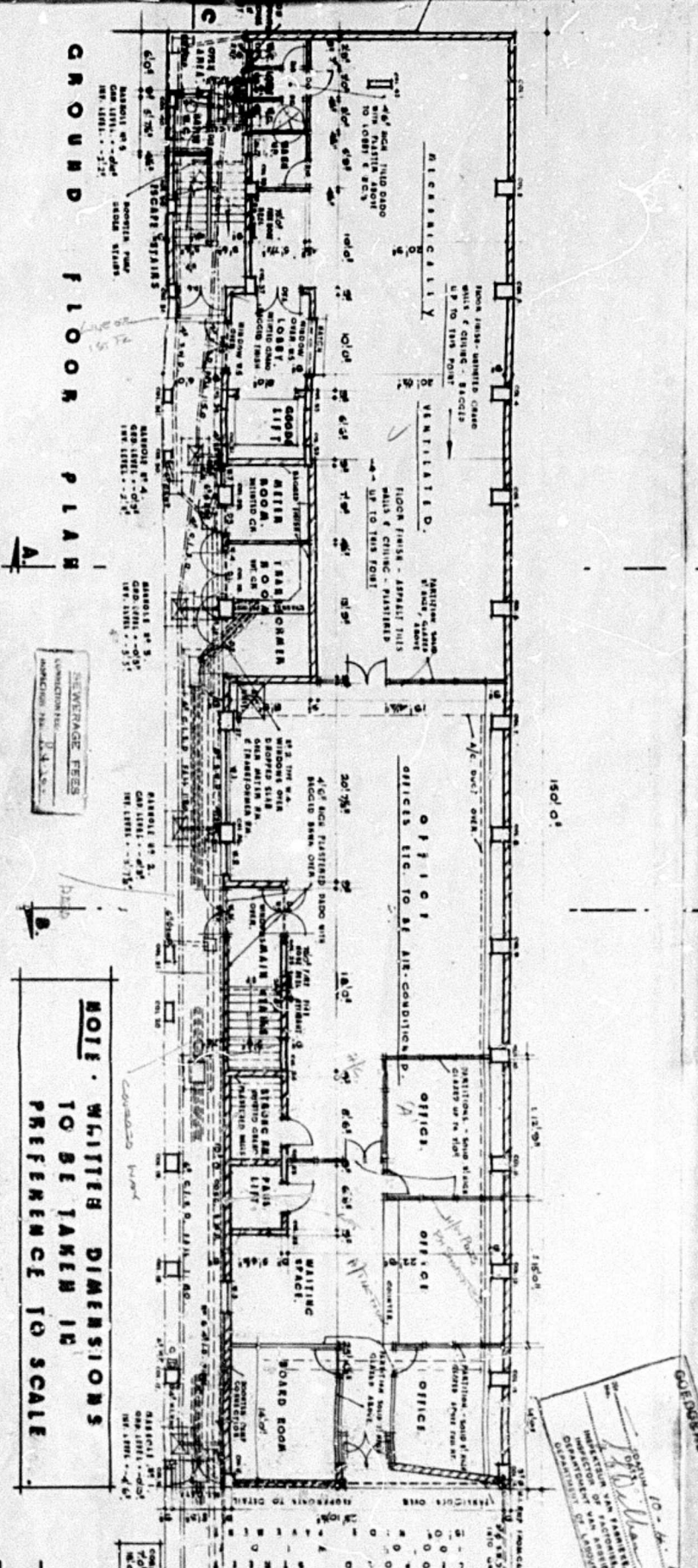
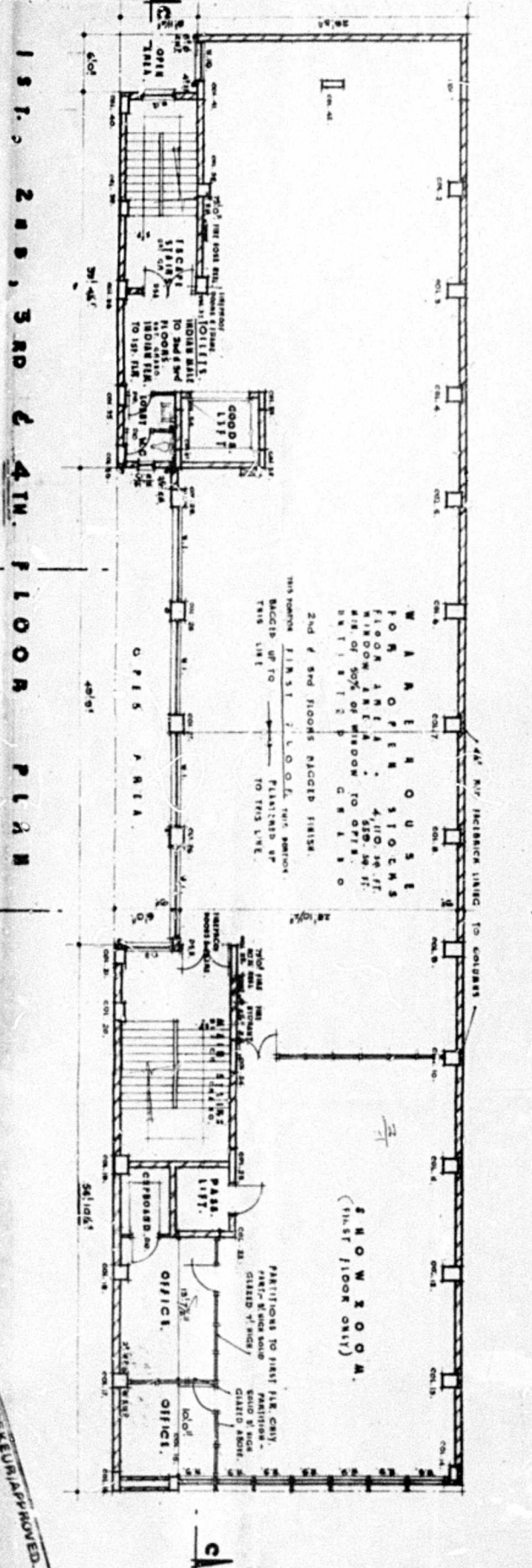
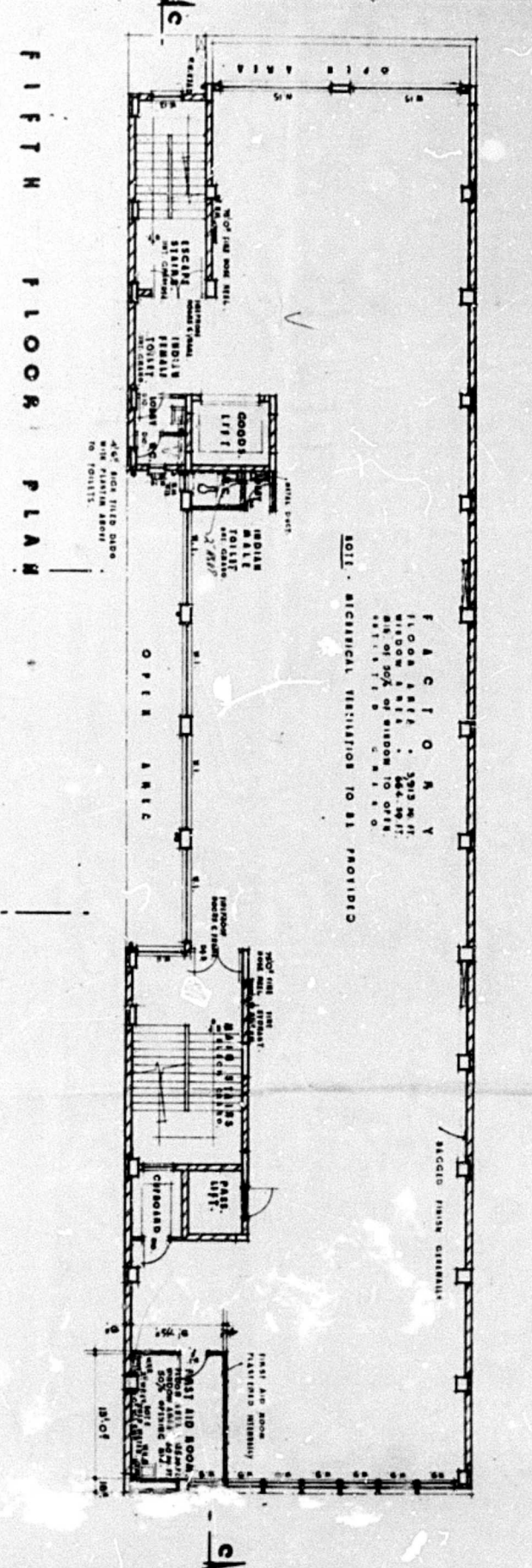
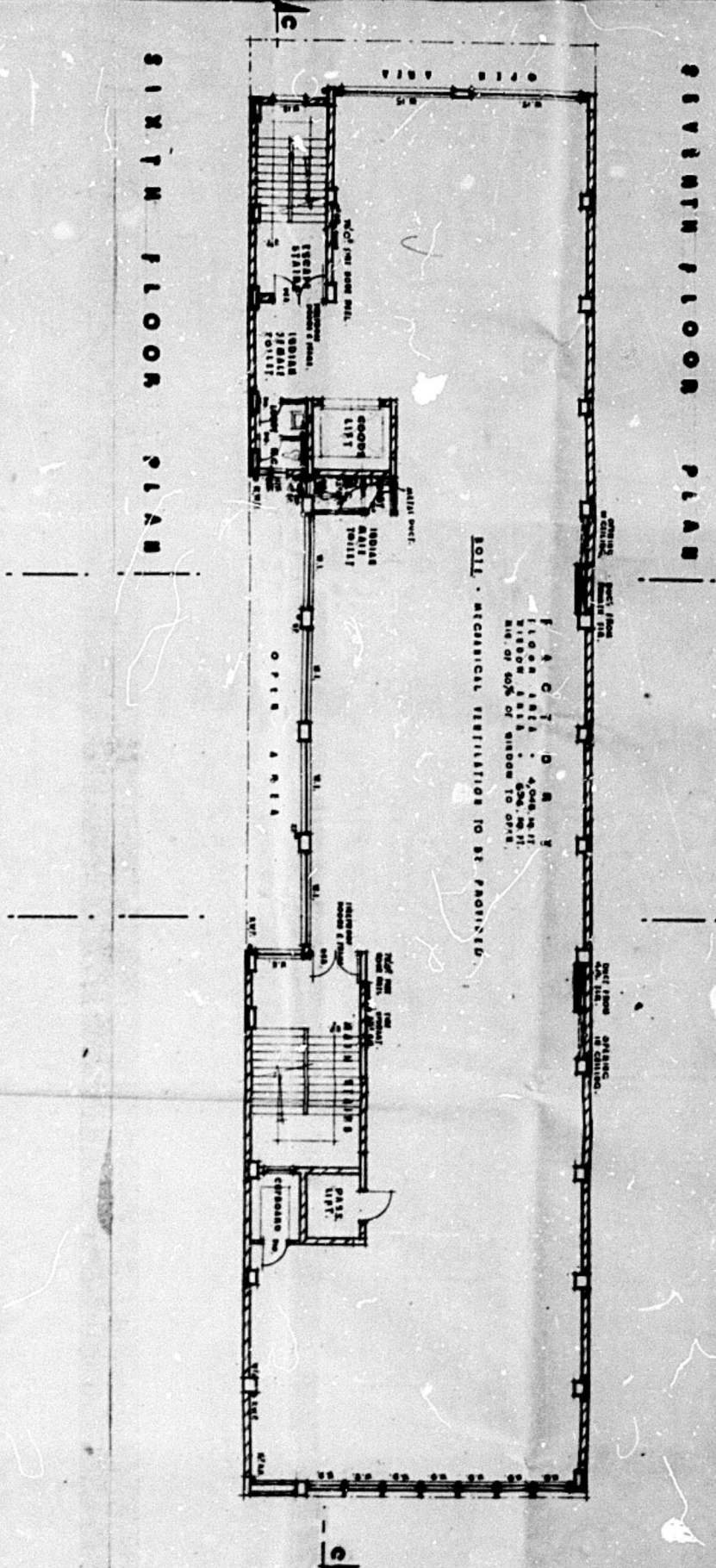
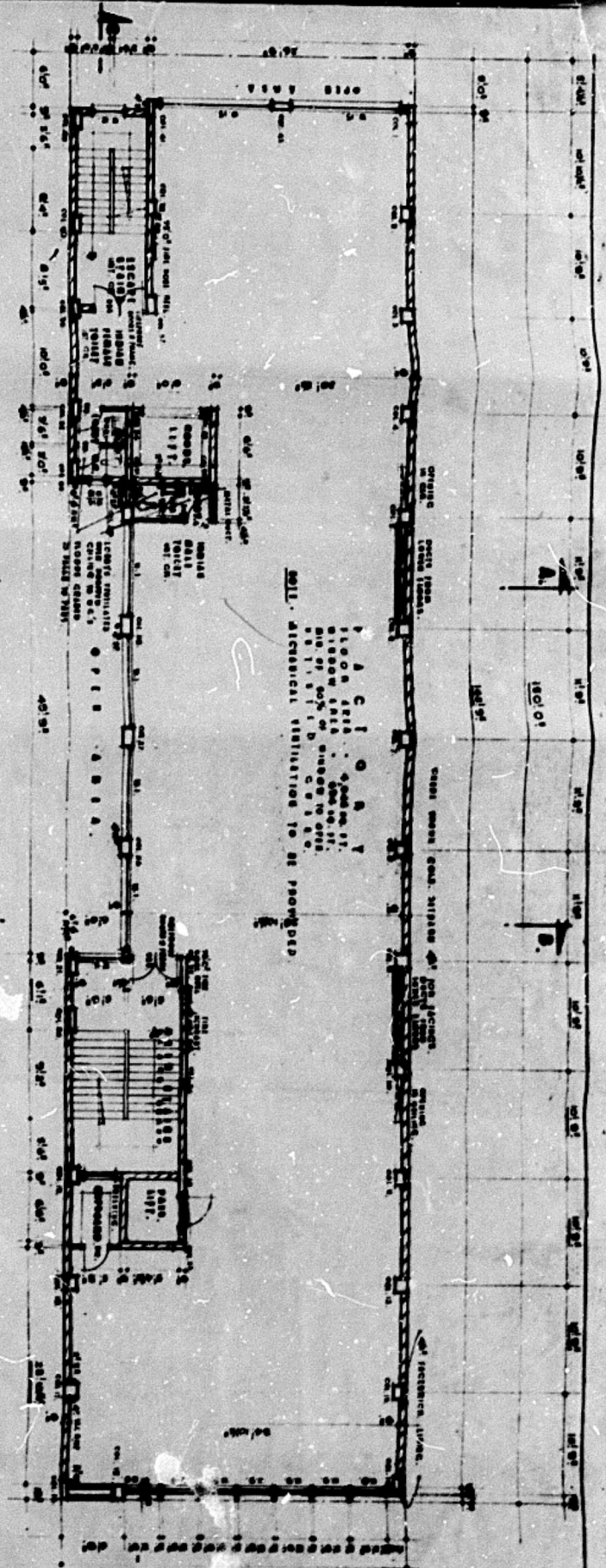
60
 1st - 7th
 Kinmont

ORIGINAL DRAWINGS PROPOSED CLOTHING FACTORY AT NO 27 LEOPOLD ST DURBAN MOGILLA CHARITY TRUST. DRAWN BY ARCHITECTS KINMONT & CO. 1961.

NOTE: WRITTEN DIMENSIONS TO BE TAKEN IN PREFERENCE TO SCALE

AMENDED DRAWING SHEET 19011

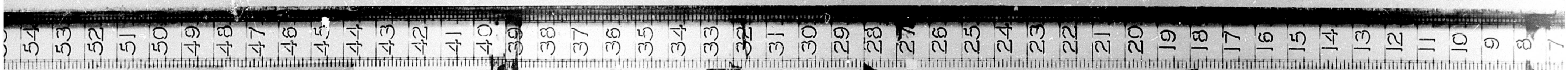




ENGINE DRAWINGS PROPOSED CLOTHING FACTORY AT NO 27 LEOPOLD ST. DUNDEE & DUNDEE
 DUNDEE, SCOTLAND
 1901

NOTE: WHITER DIMENSIONS TO BE TAKEN IN PREFERENCE TO SCALE

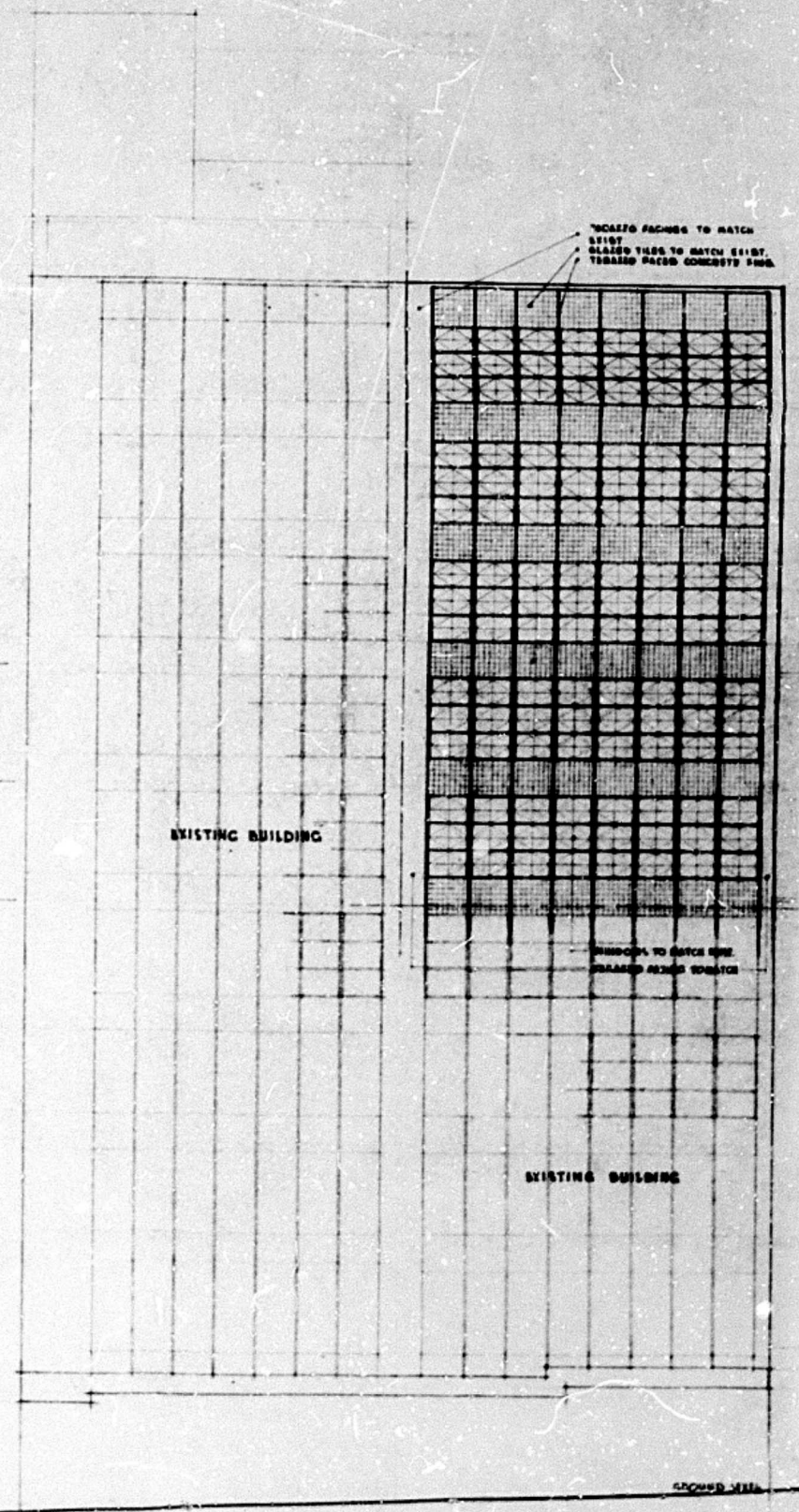
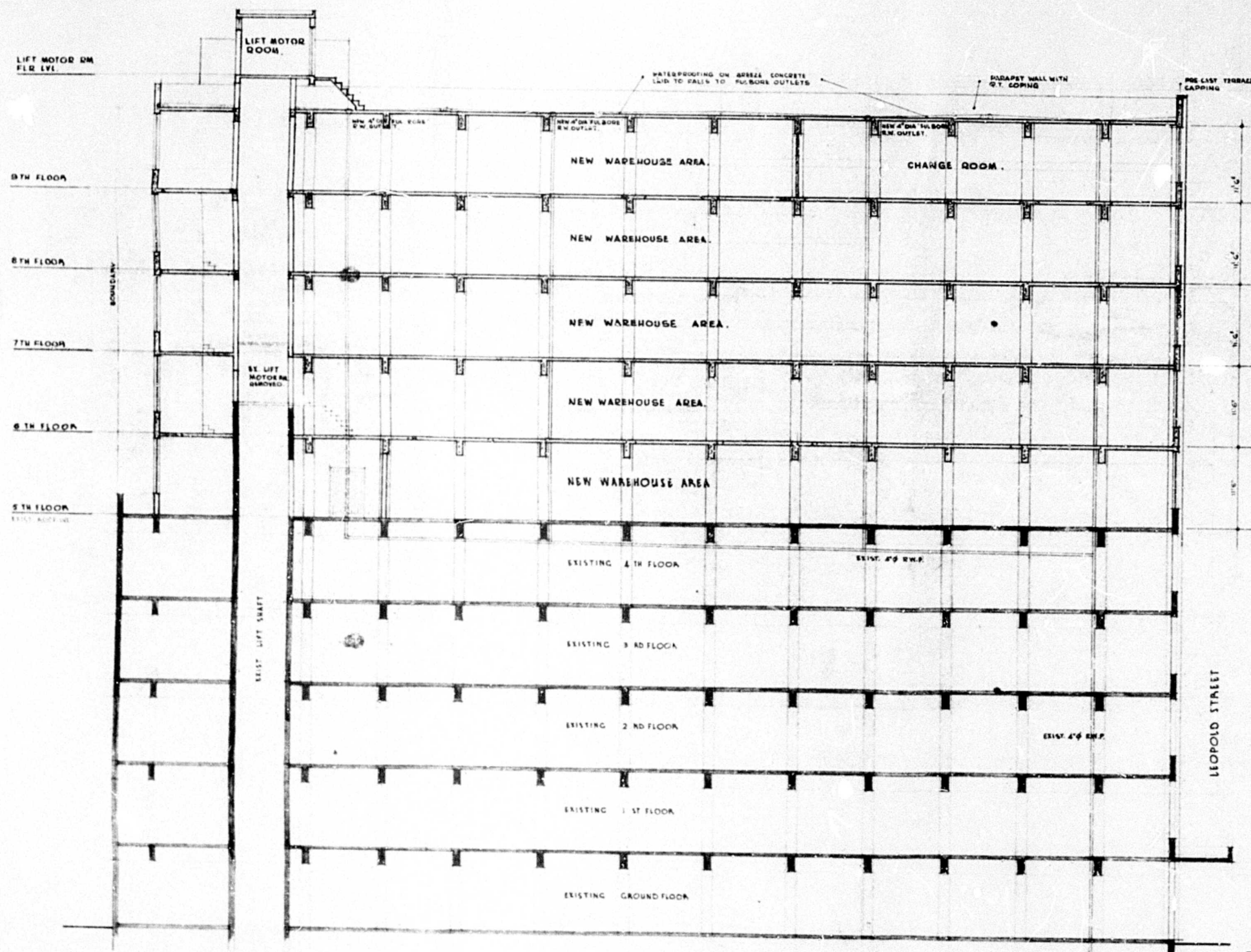
AMENDED DWGS. MARCH 1901



SHEET 3/4 COPY 3
 CITY OF DURBAN
 PLAN No. 161/9/71
 APPROVED
 C. G. HANDS
 CITY ENGINEER

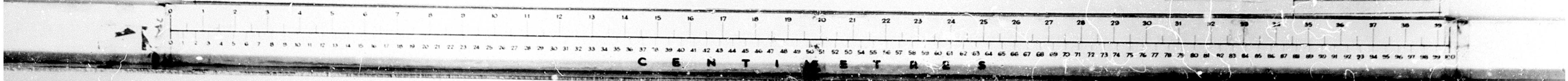
TOWN PLANNING SECTION
 APPROVED
 DATE 30 SEP 1971
 SIGNATURE

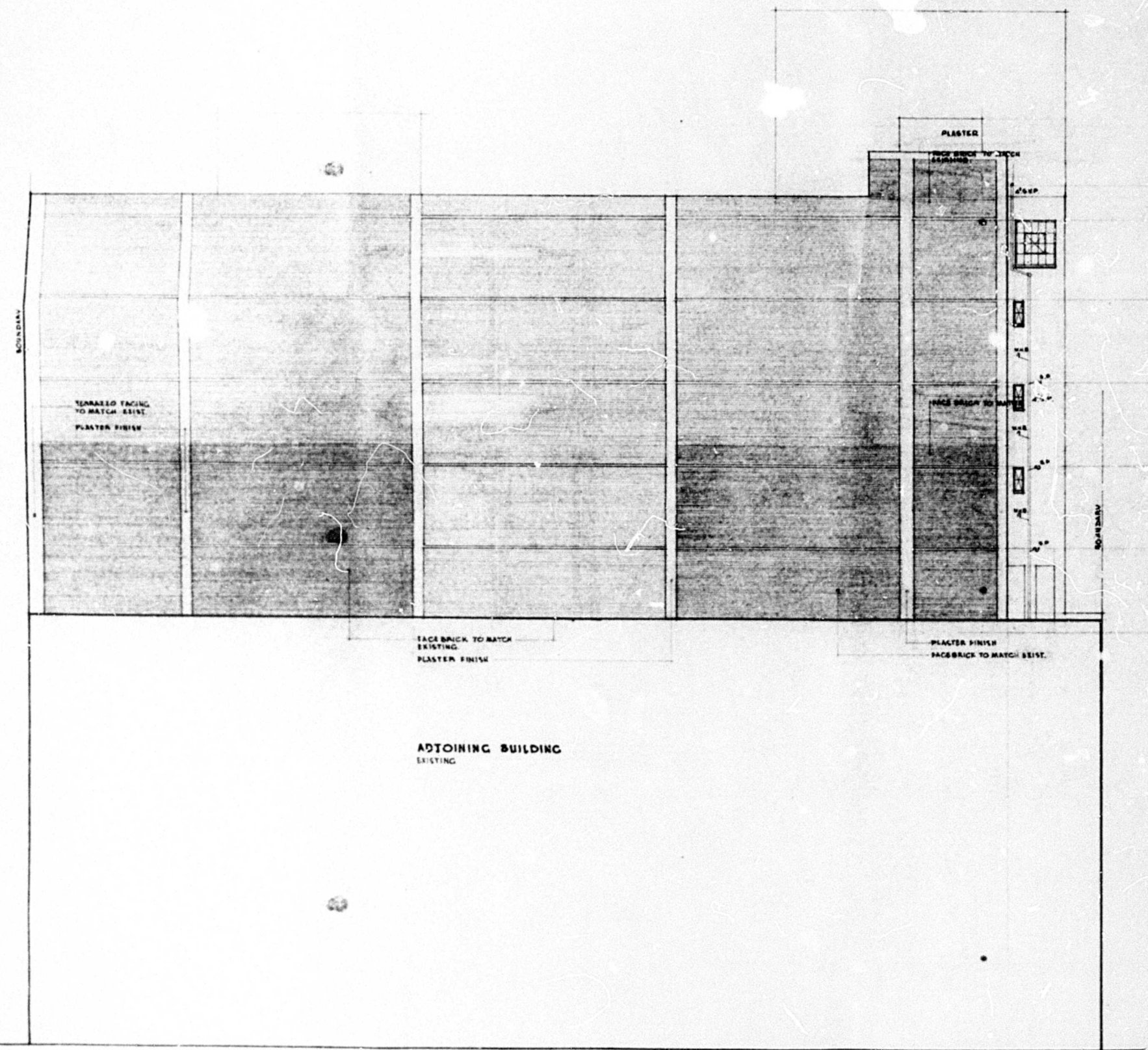
27/29
 LEOPOLD ST.
 ADDITION TO
 WAREHOUSE
 FRONT ELEVATION
 SECTION.



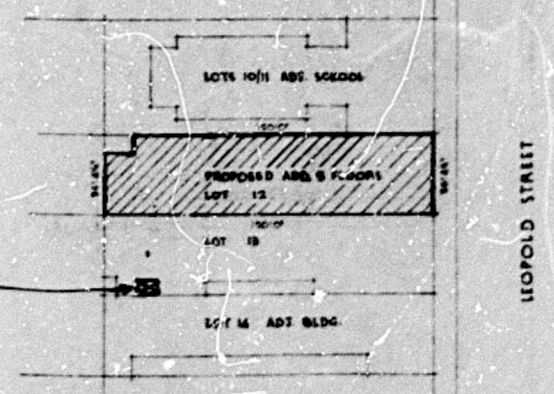
ADDITIONAL FIVE FLOORS
 TO FACTORY AND WAREHOUSE
 AT 27/31 LEOPOLD STR. DBM
 FOR A. M. MOOLLA ESQ.

DIANSEN BLUMBERG & KRAUS
 ARCHITECTS
 101 LEOPOLD STREET, DURBAN
 SCALE: 1/4" = 1'-0"





LIFT MOTOR ROOM
F.L. LEVEL.
ROOF LEVEL.
8TH FLOOR LEVEL.
8TH FLOOR LEVEL.
7TH FLOOR LEVEL.
6TH FLOOR LEVEL.
5TH FLOOR LEVEL.



SITE PLAN
SCALE 1/4" = 1'-0"
BY D. M. MOOLLA A.S.A.
DRAUGHTSMAN

WEST ELEVATION

SHEET	4/4	COPY	3
CITY OF DURBAN			
PLAN NO. 161/9/71.			
APPROVED	DATE 13 DEC 1971		
C. G. HANDS	CITY ENGINEER		

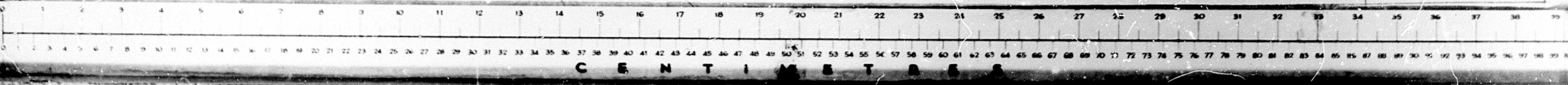
TOTAL PLANNING SECTION	
APPROVED	DATE 30 SEP 1971
SIGNATURE	

27/29
LEOPOLD ST
ADDITION TO
WAREHOUSE
SITE PLAN

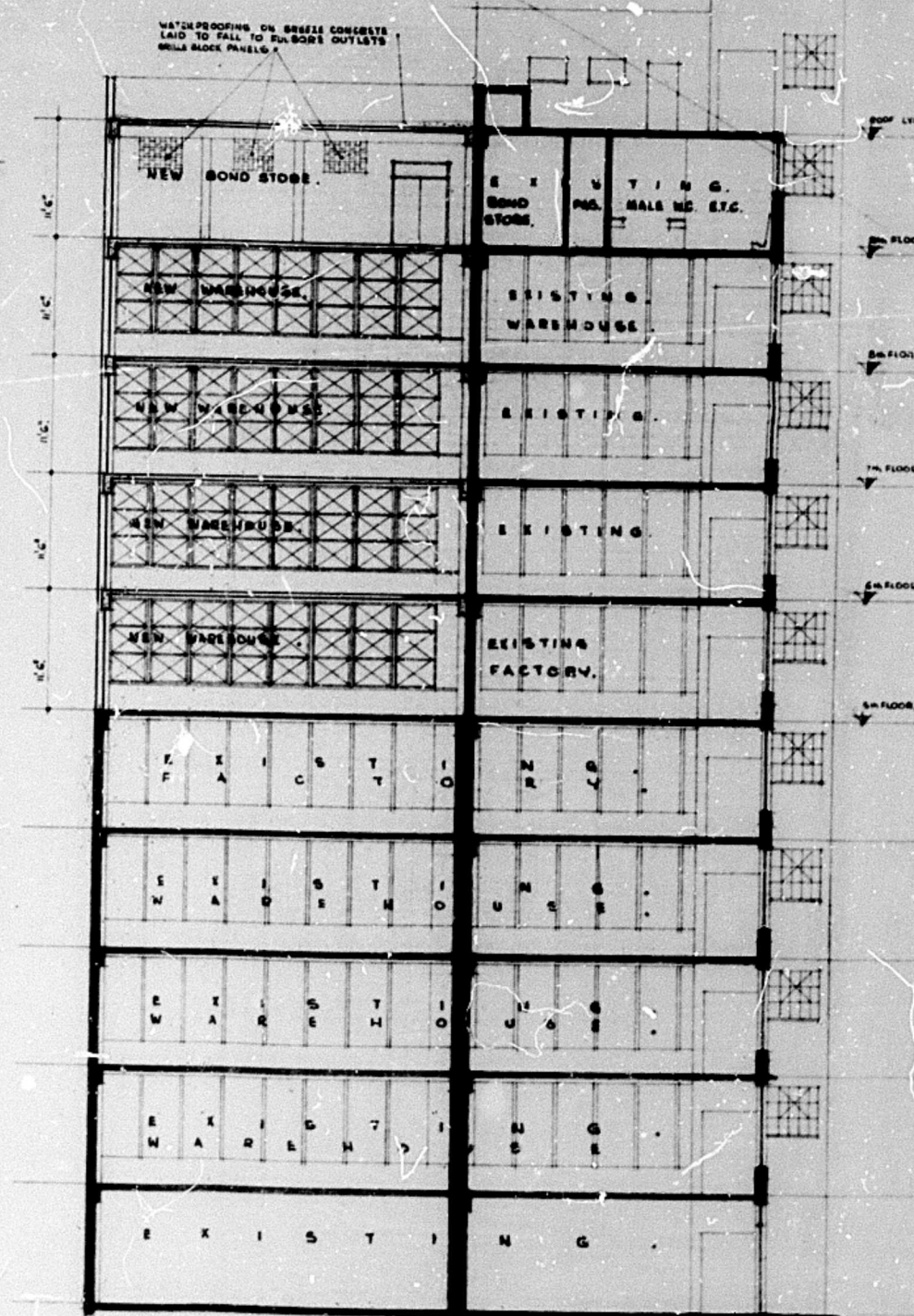
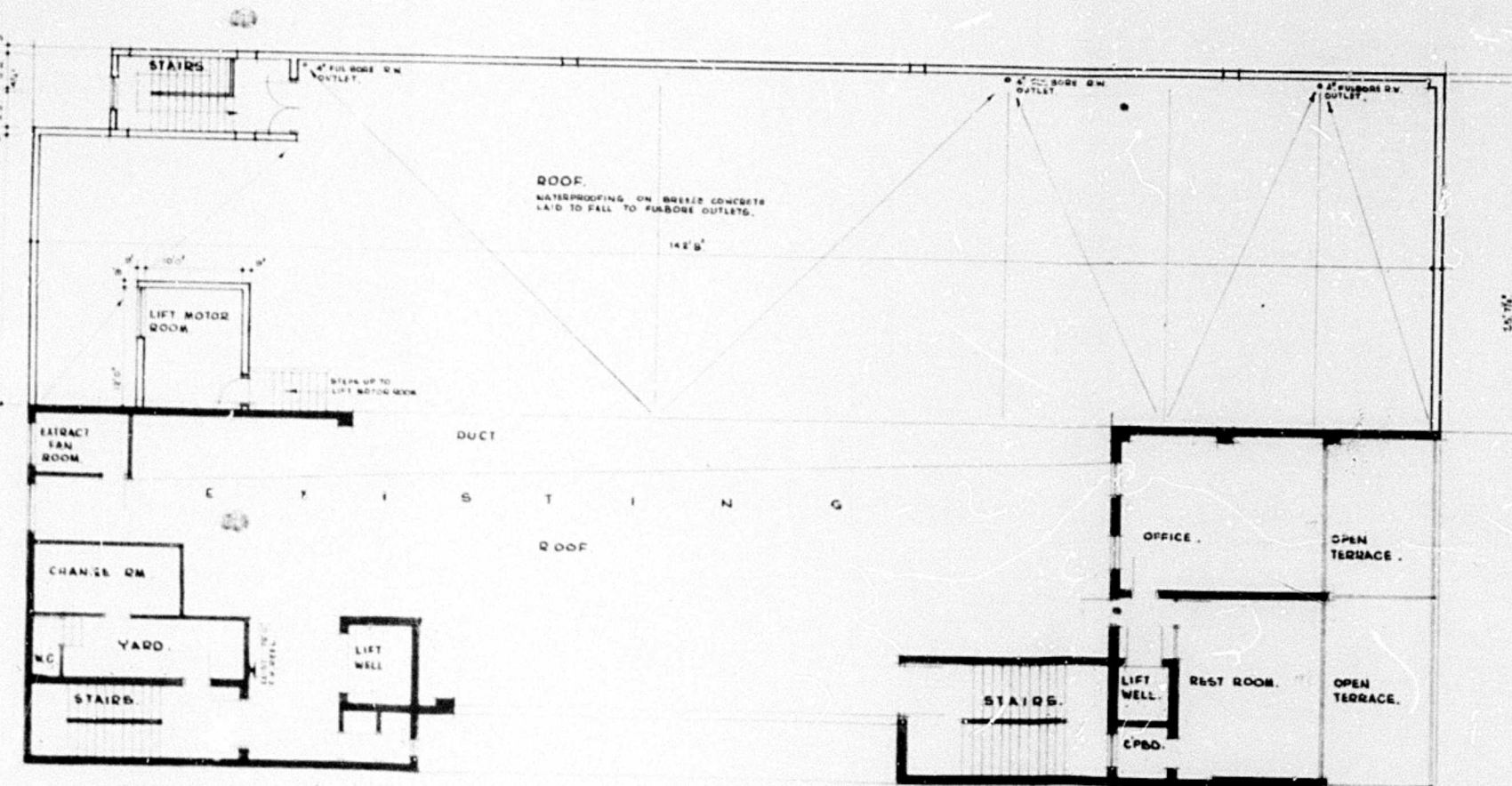
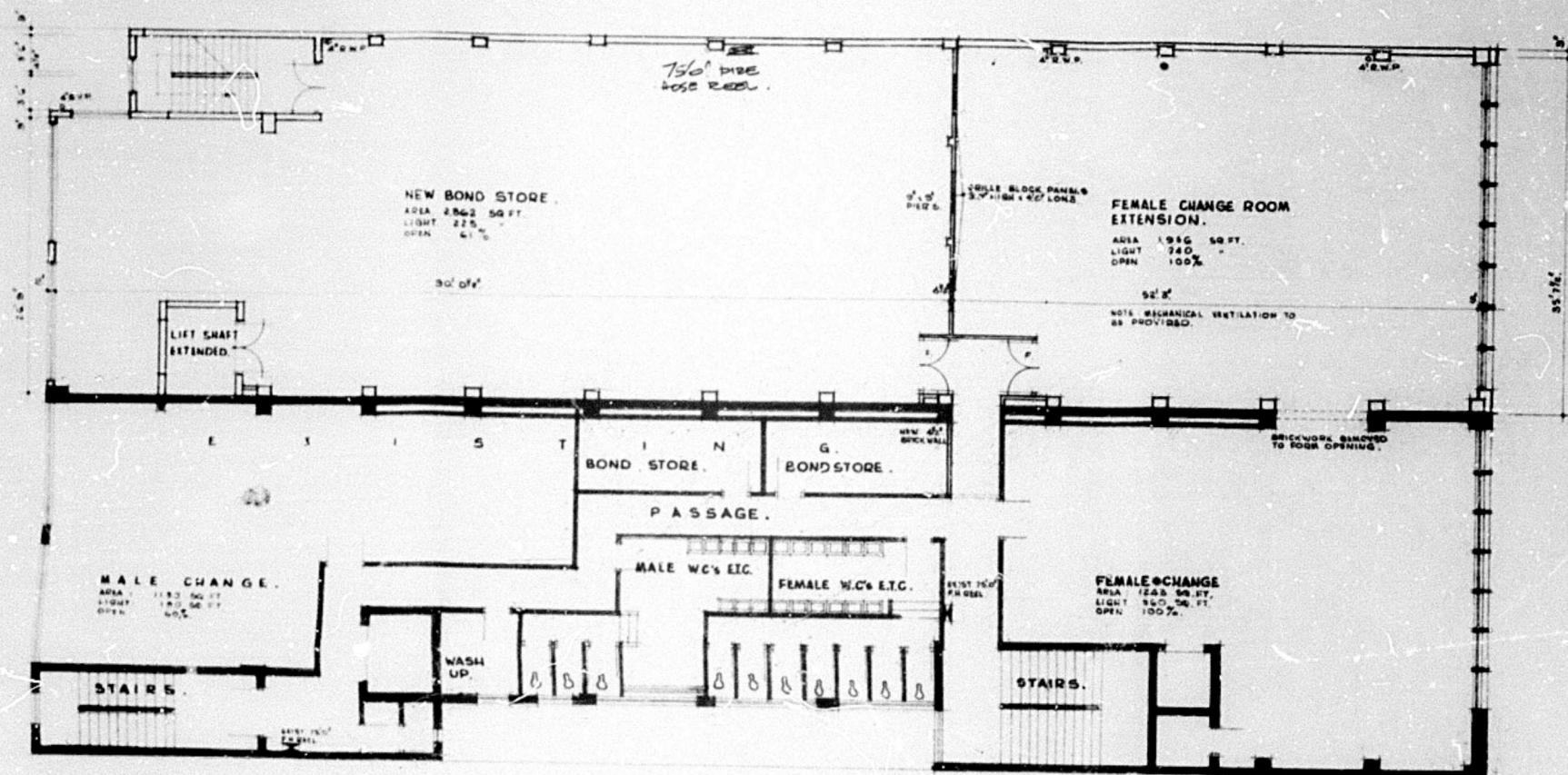
GOEDSKEUR APPROVE
13/12/71
C. G. HANDS

ADDITIONAL FIVE FLOORS
TO FACTORY AND WAREHOUSE
AT 27/31 LEOPOLD STR. DBN
FOR A. M. MOOLLA ESQ.

DIKSMAN BLUMENFELD & KRAUS
ARCHITECTS
101/103 LEOPOLD STREET DURBAN



PROJ. PLANNING SECT. DM
 APPROVED
 DATE 30 SEP 1971
 SIGNATURE *[Signature]*



27/29
 LEOPOLD ST.
 ADDITION TO
 WAREHOUSE
 ROOF & 9TH
 FLOOR PLAN
 CROSS SECTION.

PROPOSED ADDITIONAL FIVE FLOORS AT 27/31 LEOPOLD STREET, DURBAN, P99
 A. M. MOOLLA ESQ.
 SCALE 1/4" = 1'-0"
 D.A.T. & PARTNERS
 WORKING DRAWINGS
 DISKEN, BLUMENFELD & KRAUS
 CIVIL ENGINEERS & ARCHITECTS
 151/153 LEOPOLD STREET, DURBAN

