

FIRE SIGNAGE SCHEDULE

01	300	150	Photoluminescent "EXIT" signage, size 300x150mm in SANS 1186 certified ABS plastic, with natural anodized aluminum frame, drilled, plugged and fixed with non-corrosive screws against wall surface above door-frame. Colour: White panel with red border-line, and red pictogram as per SANS.
02	300	150	Photoluminescent "ESCAPE ROUTE - LEFT" signage, size 300x150mm in SANS 1186 certified ABS plastic, with natural anodized aluminum frame, mounted (hanging) to underside of ceiling with non-corrosive screws or drilled, plugged and fixed with non-corrosive screws against wall surface above door-frame. Colour: Green with white border-line, and white pictograms as per SANS.
03	300	150	Photoluminescent "ESCAPE ROUTE - RIGHT" signage, size 300x150mm in SANS 1186 certified ABS plastic, with natural anodized aluminum frame, mounted (hanging) to underside of ceiling with non-corrosive screws or drilled, plugged and fixed with non-corrosive screws against wall surface above door-frame. Colour: Green with white border-line, and white pictograms as per SANS.
04	300	150	Photoluminescent "ESCAPE ROUTE - DOWN" signage, size 300x150mm in SANS 1186 certified ABS plastic, with natural anodized aluminum frame, mounted (hanging) to underside of ceiling with non-corrosive screws or drilled, plugged and fixed with non-corrosive screws against wall surface above door-frame. Colour: Green with white border-line, and white pictograms as per SANS.

FIRE SIGNAGE SCHEDULE (continued)

05	450	150	Photoluminescent double-sided "FIRE CABINET" signage, size 450x150mm in SANS 1186 certified ABS plastic, with natural anodized aluminum frame, mounted against wall with non-corrosive screws. Colour: White panel with red border-line, and red pictogram as per SANS.
06	450	150	Photoluminescent double-sided "FIRE CABINET" signage, size 450x150mm in SANS 1186 certified ABS plastic, with natural anodized aluminum frame, mounted against underside of ceiling with non-corrosive screws. Colour: White panel with red border-line, and red pictogram as per SANS.
07	300	150	Photoluminescent "FIRE EXTINGUISHER" signage, size 300x150mm in SANS 1186 certified ABS plastic, with natural anodized aluminum frame, drilled, plugged and fixed with non-corrosive screws against wall surface above fire-extinguisher. Colour: White panel with red border-line, and red pictogram as per SANS.
08	300	150	Photoluminescent "FLAMMABLE LIQUIDS / NO SMOKING / NO FIRE" signage, size 300x300mm in SANS 1186 certified ABS plastic, with natural anodized aluminum frame, drilled, plugged and fixed with non-corrosive screws against wall surface AT 1,8m AFFL. Colour: White panel with red border-line, and red pictogram as per SANS.

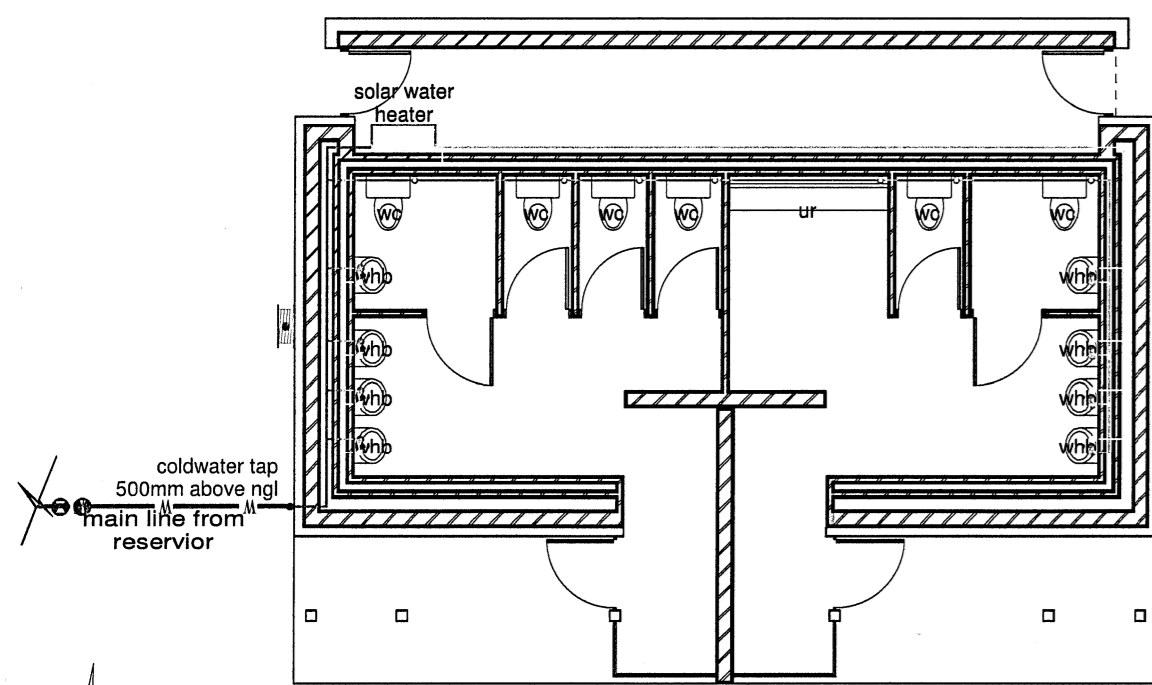
Door schedule
scale 1:50

DOOR NUMBER	D01	D02
DOOR FRAME DESCRIPTION	standard 1.2mm pressed metal single rebate door frame to fit 813mm x 2032mm door	standard 1.2mm pressed metal single rebate door frame to fit 966mm x 2032mm door
DOOR DESCRIPTION	solid core timber door with flush panels, 330mm x 930mm aluminium louvre installed, paint to finish	solid core timber door with flush panels, paint to finish
WEATHER BARS	n/a	n/a
IRONMONGERY	as per manufacturers specifications	as per manufacturers specifications
NUMBER REQD.	4 LH	1 RH 1 LH
OTHER	n/a	n/a

COPYRIGHT RESERVED
COPYRIGHT NOTICE
COPYRIGHT © 2017 - Bakopane Architects cc
Copyright subsists in this drawing. The person or entity whose name appears in the title block of this drawing, is hereby granted a non-exclusive licence to use, display, print and/or reproduce this drawing to the extent necessary to carry out and complete the project described in the title block of this drawing. This licence in respect of the copyright is expressly limited as aforesaid and the person and/or entity referred to above shall not be entitled to grant sub-licences in respect of the copyright in this drawing to any other entity. This licence confers no ownership rights in the copyright vesting in the drawing and this drawing and the copyright subsisting therein will, at all times, remain the property of Bakopane Architects cc. Any unauthorised reproduction, publication, transmission, adaption and/or inclusion of this drawing in a cinematograph film or television broadcast is an act of copyright infringement which will render the doer of the act liable for civil law copyright infringement and may in certain circumstances render the doer liable to criminal prosecution. Requests and enquiries concerning this drawing and the rights subsisting therein should be addressed to the copyright owner.

Rev	08	28/04/17	Construction drawings	NSM
No:	Date:	Notes:	Drawn:	

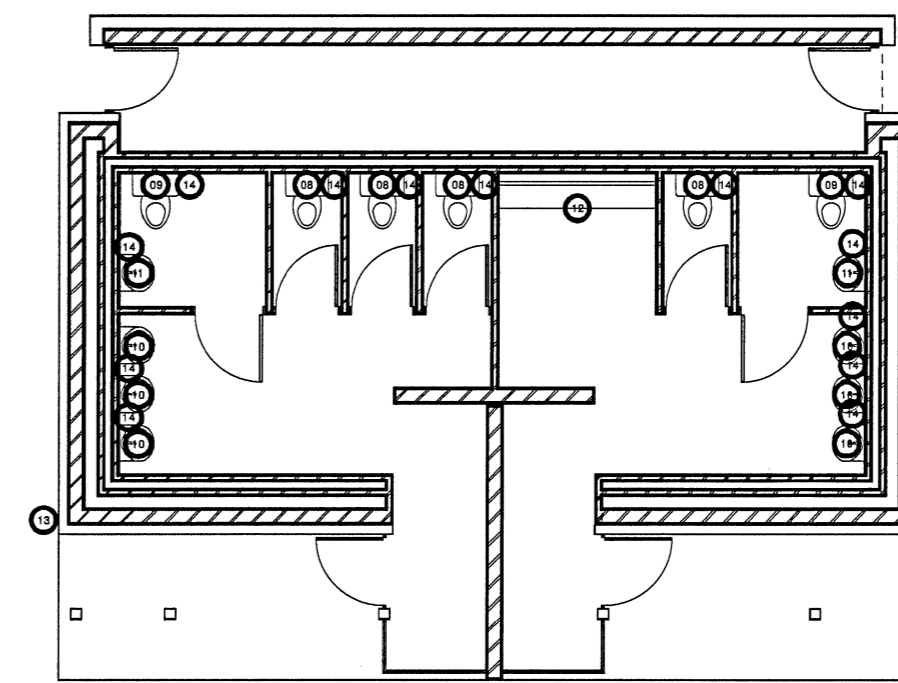
Scale 1:100
Picnic Site Ablutions - fire plan



WATER RETICULATION KEY:

- Isolation valves for toilets/urinals etc.
- Cold water tap
- Hot water tap
- Cold water pipe (in wall or roofspace)
- Hot water pipe (in wall or roofspace)
- Main water feed from existing source
- Non Return Valve
- Isolating Valve

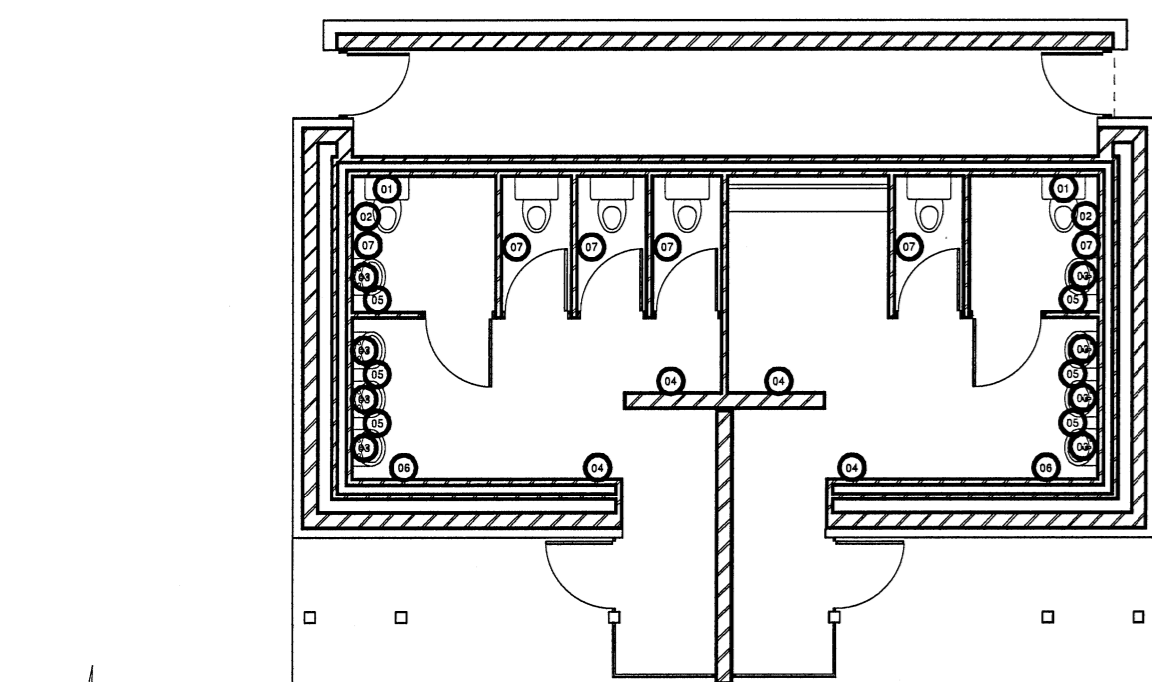
Scale 1:100
Picnic Site Ablutions - water reticulation plan



Scale 1:100
Picnic Site Ablutions - sanitary fittings key

sanitary fittings:

- 01 Franke CNTXBR 32mm diameter satin finished stainless steel cistern back rail (Code: 359912), size 750 x 260mm with Franke Fine Grip surface, plugged and screwed to the wall with stainless steel screws.
- 02 Franke CNTX700A 32mm diameter satin finished stainless steel angle bar (Code: 359877), size 618 x 95 x 256mm with Franke Fine Grip surface, plugged and screwed to the wall with stainless steel screws.
- 03 Franke M600HD 8mm mirrors (Code: 359922), size 600 x 500mm high, concealed thief resistant fixings, plugged and screwed to the wall with stainless steel screws.
- 04 Franke Chronos BS610 1,25mm thick satin finished stainless steel perforated waste container (Code: 359825), size 410 x 222 x 380mm high with lock, 180 degree radius front and perforated fascia pattern, waste bin capacity of 23 litres, plugged and screwed to the wall with stainless steel screws.
- 05 Franke Stratos STRX625 1,2/1,5mm thick satin finished stainless steel soap dispenser (Code: 359714), size 120 x 126 x 303mm, plugged and screwed to the wall with stainless steel screws.
- 06 Franke Stratos STRX600 1,2/1,5mm thick satin finished stainless steel paper towel dispenser (Code: 359700), size 300 x 134 x 305mm high with a capacity of 300-400 towels and cylinder lock with standard Franke key, plugged and screwed to the wall with stainless steel screws.
- 07 Franke Stratos STRX672 1,2/1,5mm thick satin finished stainless steel double toilet roll dispenser (Code: 359716), size 156 x 141 x 303mm high for 2 rolls maximum 108mm diameter with spindle system and cylinder lock with standard Franke key, plugged and screwed to the wall with stainless steel screws.
- 08 Franke Grade 304 18/10 stainless steel HDTX562 heavy duty wall hung pan (Code:356109), size 360 x 550 x 350mm high with wooden slats (Code: 356049), concealed flushing system (elsewhere specified), pan positioned in the centre and back entry 38mm flush pipe inlet, fixed to wall with wall bracket and galvanised mild steel threaded rods, compliant with SABS 1733-2002. Cobra Watertech fix concealed cistern (Code: CC-CISTERN) for wall hung WC, front actuated with Alto dual-flush actuator in metal matt chrome finish (Code: CC-PLATE-MC), including flush pipe, water supply connection with stop valve, in-valve, out-valve, dual flush outlet pipe, connection pipe, netting for direct plastering, protection cover for service opening and protection cover for flush pipe, fixed with included fastening materials inside solid wall.
- 09 Franke Grade 304 18/10 stainless steel HDTX564 heavy duty wall hung pan for disabled persons (Code:356116), size 360 x 700 x 350mm high with wooden slats (Code: 356049), concealed flushing system (elsewhere specified), pan positioned in the centre and back entry 38mm flush pipe inlet, fixed to wall with wall bracket and galvanised mild steel threaded rods, compliant with SABS 1733-2002. Cobra Watertech concealed WC chrome plated Cobatron electronic flushvalve (code: EL-4-213) with non-hold open feature with manual override flushing button, adjustable sensor range, adjustable flushing time with 24 hour autoflush option.
- 10 Franke 1,6mm Grade 304 18/10 stainless steel HDS heavy duty surround basin (Code:325317), size 390 x 322 x 340mm high with a one piece pressed bowl, pan positioned in the centre, 50mm stainless steel outlet pipe, fixed to wall with 4No. 8mm diameter x 250mm long galvanised mild steel treaded rods. Cobra Watertech Ledimo 15mm chrome plated pillar tap (Code: LC-214-15) with aerator outlet and flanged backnut, manufactured in accordance with SANS 228:2004 Type 1 (BS 5412). Cobra Watertech 32mm chrome plated bottle trap (Code: 350) with 75mm deep re-seal, adjustable telescopic pipe and 40mm outlet.
- 11 Franke 1,2mm Grade 304 18/10 stainless steel HDWHB heavy duty security type wash hand basin (Code:356672), size 454 x 380 x 600mm high with a one piece pressed bowl size 410 x 300 x 140mm deep, 150mm high splashback, pan positioned in the centre, 50mm stainless steel outlet pipe, fixed to wall with 4No. 8mm diameter x 250mm long galvanised mild steel treaded rods. Cobra Watertech 15mm chrome plated basin mixer (Code: NM-851) with aerated fixed straight spout, manufactured in accordance with SANS 1480:2005 (BS EN 1286). Cobra Watertech 32mm chrome plated bottle trap (Code: 350) with 75mm deep re-seal, adjustable telescopic pipe and 40mm outlet.
- 12 re-use existing urinal
- 13 Cobra Watertech 20mm standard brass hose bibtap (code: 108-20) with wingnut, lining and 20mm hose union, manufactured in accordance with SANS 228:2009 Type 1 (BS 1010).
- 14 Cobra Watertech Ledimo 15mm chrome plated C x C (Compression) underwall stoptap (Code: LO-238-15) with sliding wall flange, manufactured in accordance with SANS 228:2004 Type 1 (BS 5412). stop taps to be installed at each toilet, basin, urinal and sink.



Scale 1:100
Picnic Site Ablutions - sanitary hardware key

GENERAL NOTES:

- Check all measurements, levels and details on site before commencement with work.
- Refer any discrepancies to architect
- All work to be done in accordance with SANS-10400
- Nothing to be scaled from drawing; request measurement from architect
- Architect's & engineer's drawings to be read together
- Drawing to be used for intention as mentioned in Drawing description.



DEPARTMENT'S SIGNATURE:



PRINCIPAL AGENT:



ARCHITECTS SIGNATURE:

APPROVED BY	CONT-APPROVAL	NAME	DATE	SIGNATURE	MINE - NOTED	NAME	DATE	SIGNATURE	ANGLO - NOTED	NAME	DATE	SIGNATURE
	DRAWN	N.G Masenya	2016/05/04		PROJECT ENGINEER				HEAD OF PROJECTS	B. Gaven	2016/05/04	
	CHECKED				PROCESS ENGINEER				HOE-AAIC			
	DESIGNED	H. Labuschagne	2016/05/04		MINING PLANNER				MECH ENGINEER			
	PROJ. ENGINEER				CONSTR. MANAGER				ELEC. ENGINEER			
	PROJ. MANAGER				PROJECT MANAGER				C & I ENGINEER			
	PR. ENG.	W. Sarge	2017/05/10		ENG. MANAGER				CIVIL ENGINEER			
	PR. ENG. No.	20040100			MINING MANAGER							
					GENERAL MANAGER							

CLIENT: NORTH-WEST RURAL, ENVIRONMENTAL & AGRICULTURE DEPARTMENT
PROJECT : PROPOSED ALTERATIONS & ADDITIONS TO TAUNG SKULL HERITAGE SITE
AREA : PROVINCE OF NORTH-WEST
LOCATION: TAUNG SKULL HERITAGE SITE
PROJECT PRINCIPAL: ENDECON UBUNTU
TITLE : PICNIC SITE ABLUCTIONS

read
Department: Rural, Environmental and Agricultural Development
North West Provincial Government
REPUBLIC OF SOUTH AFRICA

COPYRIGHT

DRG No. **TAUNG - 42017 - ARC - PA03**

SCALE: 1/100/50/20
ORIGINAL DRG. SIZE A1
REV. 0

SITE. PROJ. BUS. UNIT SEQ. No.