



Simon Todd Pr.Sci.Nat  
 Director & Principle Scientist  
 C: 082 3326502  
 O: 021 782 0377  
 Simon.Todd@3foxes.co.za

60 Forrest Way  
 Glencairn  
 7975

Ecological Solutions for  
 People & the Environment

Simon Todd  
 3Foxes Biodiversity Solutions  
 60 Forrest Way  
 Glencairn  
 7975

Arcus Consultancy Services South Africa (Pty) Ltd  
 Office 220 Cube Workspace  
 Cnr Long Street and Hans Strijdom Ave  
 Cape Town  
 8001  
 At: Aneesah Alwie

20 August 2019

**RE: Proposed Phezukomoya/Hartebeesthoek West Split Part 2 Amendment Application**

The Phezukomoya WEF is authorised for a maximum capacity of 275 MW, with a total of up to 55 turbines with an individual rating of between 3 and 5 MW, a rotor diameter of 150 m, hub height of 150 m and a blade length of 75 m. The developer would like the project to be split into two projects, Phezukomoya and Hartebeesthoek West WEFs with the following amendments:

Aspect	Authorised	Proposed Amended	
Project Name	Phezukomoya	Phezukomoya	Hartebeesthoek West
Overall Capacity	275MW	217 MW	74.4MW
Generation capacity per turbine	Between 3MW and 5MW	Up to 6.2MW	Up to 6.2MW
Hub Height	150m	Up to 137m	Up to 137m
Rotor Diameter	150m	Up to 175m	Up to 175m
Number of Turbines	55 turbines	35 turbines	12 turbines
Access	2 Access points	No additional access point	Any new addition access points to be assessed

Arcus is conducting the amendment application on behalf of Phezukomoya Wind Power (Pty) Ltd, and have requested comment from 3Foxes Biodiversity Solutions regarding the terrestrial ecological impacts associated with the development, in context of the existing authorisation, and with regards to the following:

- i. An assessment of all impacts related to the proposed change;
- ii. Advantages and disadvantages associated with the proposed change;
- iii. Measures to ensure avoidance, management and mitigation of impacts associated with such proposed change; and
- iv. Any changes to the EMPr.

**Assessed and Revised Impacts**

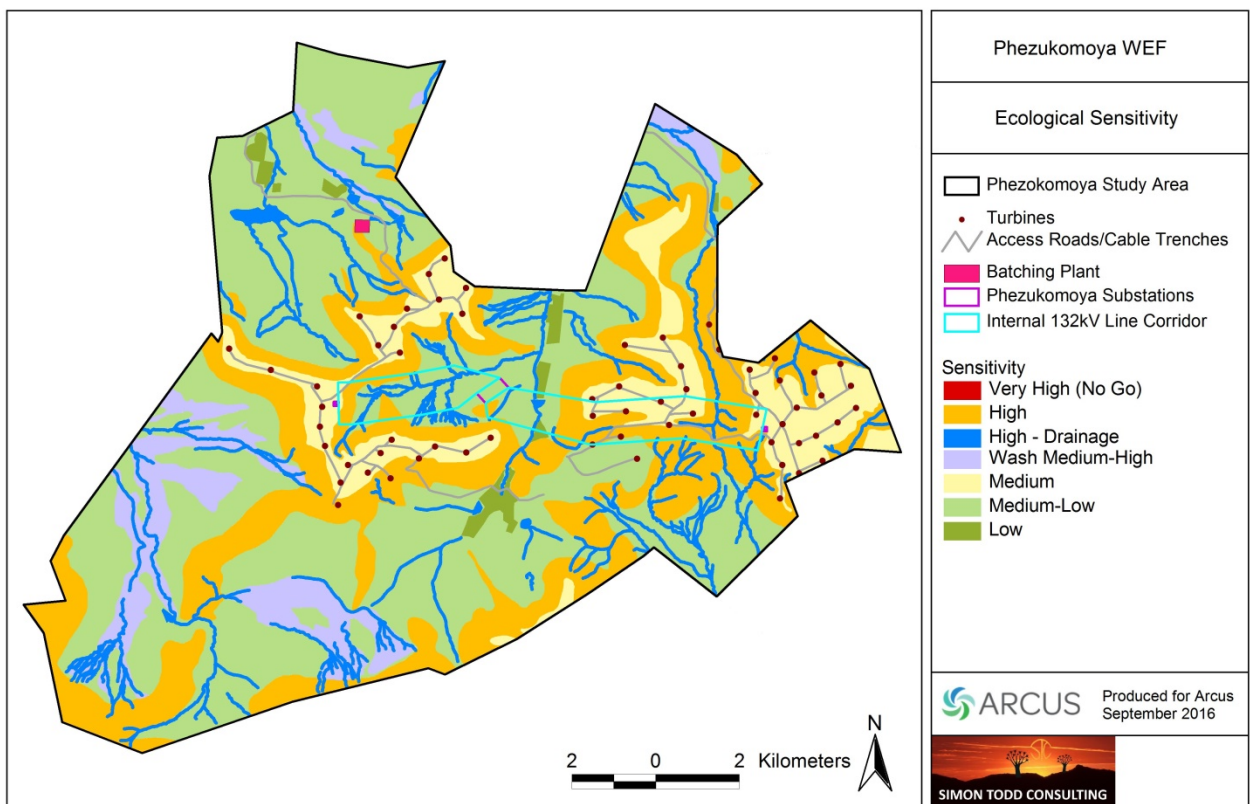
A summary of the originally assessed ecological impacts associated with the Phezukomoya development, as authorised, are provided in the table below for reference. The current amended project description for the combined Phezukomoya and Hartebeesthoek West turbine layout is also provided. In terms of a comparative assessment of the approved layout and the current amended layout, consisting of the two projects, these are considered equivalent and there are no differences in impact associated with the proposed change. The original extent of new access roads is estimated at 61.8 km and the combined length of the access roads, required on the new amended layout consisting of two facilities, is 55.6 km. As such, there is a small decrease of about 10% in the total extent of roads required. The larger turbines proposed are expected to require somewhat larger hard stands and laydown areas, with the result that the footprint of each turbine could potentially increase. However, the total number of turbines would decrease from 55 to 47, with the result that this is likely to offset any increase in the required footprint and the total extent of habitat loss, therefore impacts resulting from the turbines would remain similar or be reduced. There may be a slight decrease in the total footprint of the development largely as a result of the decreased road length associated with the amendment. The assessed impacts are considered robust and conservatively assessed, and while the footprint of the development may decrease slightly, this is not substantive and would not change any of the assessed impacts to a higher or lower significance from that assessed. As such, there are no changes in the assessed impacts associated with the split of the Phezukomoya project into the two projects, as proposed.

The summary assessment for the Phezukomoya Wind Energy Facility, before and after mitigation, for the original 55 turbine layout and the amended turbine layout consisting of both the Phezukomoya and Hartebeesthoek West Facilities.

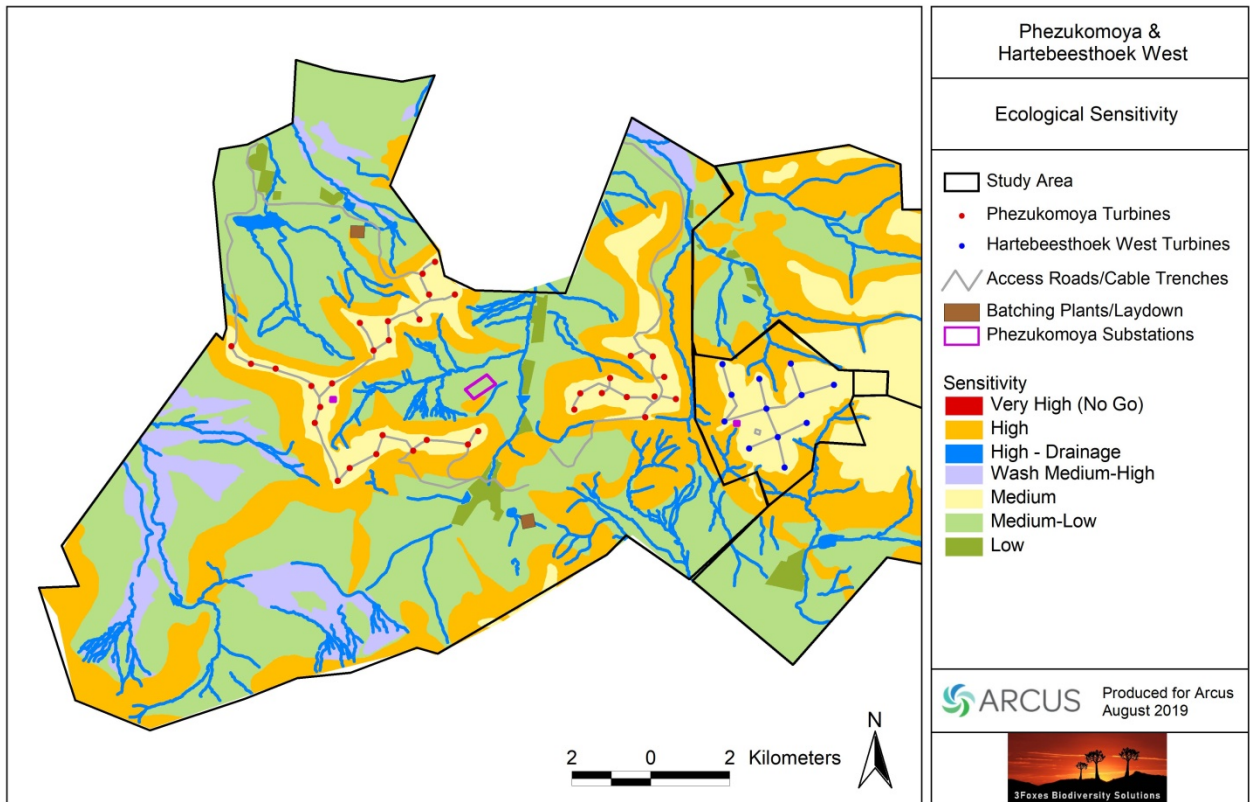
	Original Phezukomoya with 55 Turbine		Amendment with Phezukomoya split into Phezukomoya with 35 turbines and Hartebeesthoek with 12 turbines (47 turbines total)	
Phase & Impact	Before Mitigation	After Mitigation	Before Mitigation	After Mitigation
<b>Planning &amp; Construction Phase Impacts</b>				
Impacts on vegetation and listed plant species	High	Medium	High	Medium
Faunal impacts due to construction activities	Medium	Medium	Medium	Medium
<b>Operational Phase Impacts</b>				
Faunal impacts due to operational activities	Medium	Low	Medium	Low
Increased alien plant invasion risk	Medium	Low	Medium	Low
Increased erosion risk during operation	High	Low	High	Low
Impact on CBAs	High	Medium	High	Medium

Decommissioning				
Faunal impacts due to decommissioning activities	Medium	Low	Medium	Low
Increased alien plant invasion risk after decommissioning	Medium	Low	Medium	Low
Increased erosion risk following decommissioning	Medium	Low	Medium	Low
Cumulative Impacts				
Cumulative impacts on habitat loss and future ability to meet conservation targets.	Medium	Medium	Medium	Medium

The distribution of turbines across the site would remain similar. The sensitivity map of the original approved layout is illustrated below in Figure 1 and the amendment with the facility split into two, is illustrated in Figure 2. All of the turbines in both cases are restricted to medium sensitivity areas and there are no turbines in areas considered unsuitable for development.

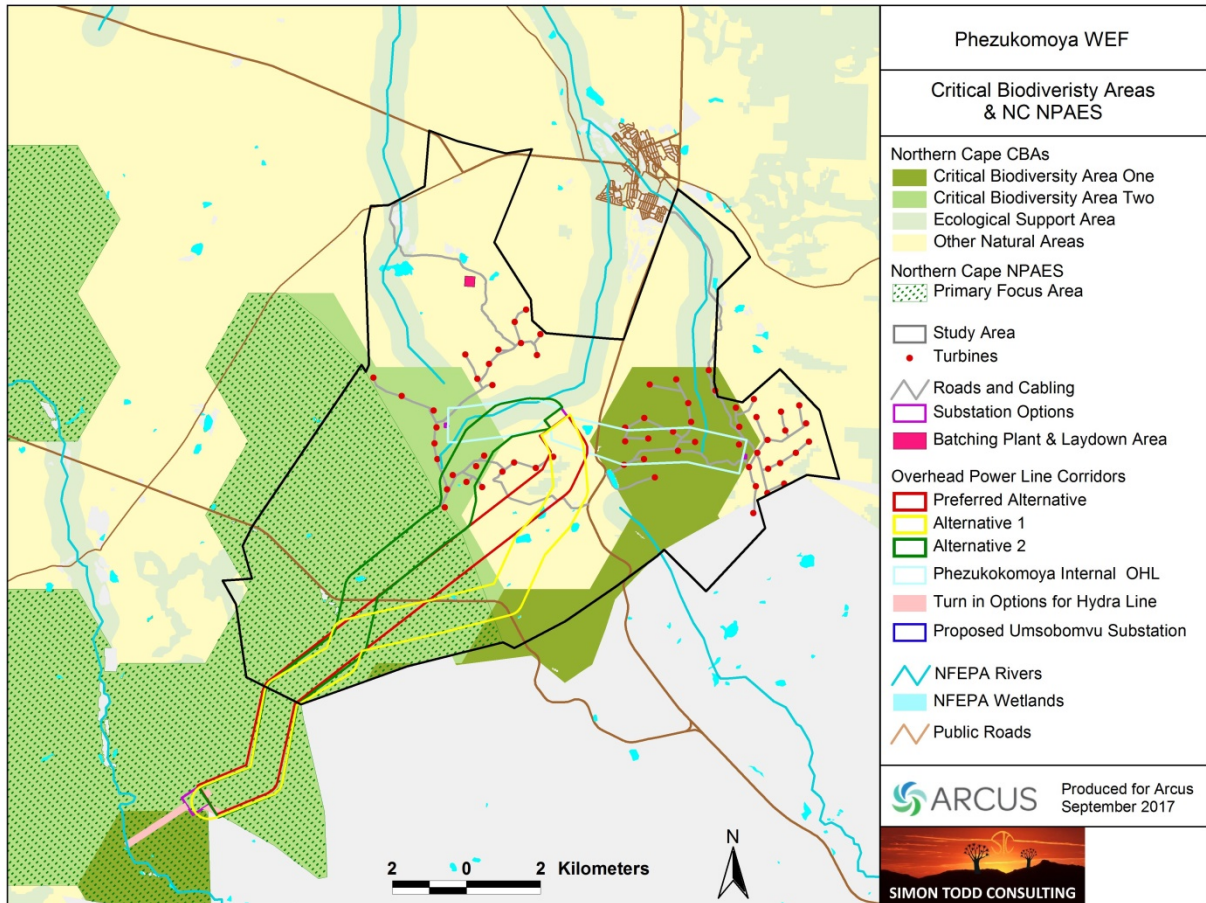


**Figure 1.** The original authorised Phezukomoya layout as assessed in the original ecological study.



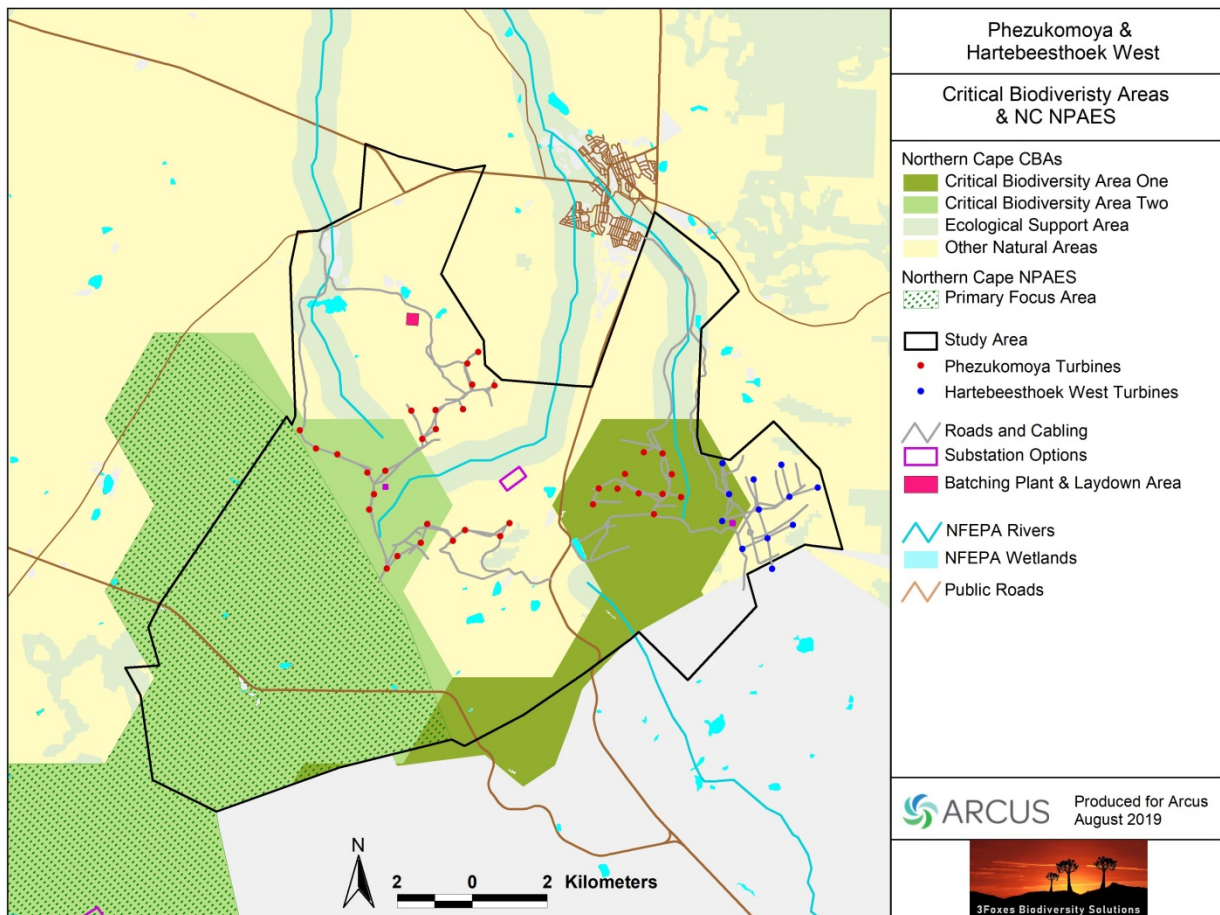
**Figure 2.** The amended layout for Phezukomoya and Hartebeesthoek as provided for the current assessment. There are no turbines in high sensitivity areas and the overall distribution of turbines is similar to the original Phezukomoya Layout, as depicted in Figure 1.

In terms of the impact on CBAs, the original layout had a total of 12 turbines within CBA 2 areas and 19 turbines within CBA 1 areas. This compares to 11 turbines in CBA 2 areas 14 turbines in CBA 1 areas in the amendment. As such, there is a moderate decrease in the number of turbines within the CBAs, which can be seen as favourable in terms of expected impacts on CBAs. However, this decrease is not considered sufficient to decrease the assessed impact of the development from moderate to low significance. As such, there is no overall change in the assessed impact of the development on CBAs. In addition, there were no turbines within the Northern Cape Protected Area Expansion Strategy Focus Areas in the original assessment, and the amendment similarly avoids these areas.



**Figure 3.** Extract of the Northern Cape Critical Biodiversity Areas map for the original approved layout. There are no CBAs in the Eastern Cape section of the study area. There are 31 turbines within CBAs under this layout.





**Figure 4.** Extract of the Northern Cape Critical Biodiversity Areas map for the amended layout. There are no CBAs in the Eastern Cape section of the study area. There are 25 turbines in CBAs under the amended layout.

### ***Cumulative Impact***

As the overall footprint of the amended layout consisting of the Phezukomoya and Hartebeesthoek West facilities would be similar to the original approved Phezukomoya facility, an increase in the cumulative impacts associated with the amendment is not expected. In principle, the split would require each facility to win preferred bidder status for the whole development to be built. It is potentially less likely that the full development would be built. The likelihood that the full cumulative impacts associated with the split would be realized has declined compared to the original single Phezukomoya facility. However, as this is speculative, it is assumed that both facilities would be built and this is compared to the original single Phezukomoya development. Furthermore, there is also a proposed split of the adjacent San Kraal facility into the San Kraal and Hartebeesthoek East facilities. As the total footprint of this split would also be similar to the original assessed impact, an increase in the local cumulative impacts associated with the split, of the two original facilities into four facilities, would not occur. Under the provided scenarios, the cumulative impacts associated with the split Phezukomoya – Hartebeesthoek West facility are considered equivalent to the original Phezukomoya development, and no changes in cumulative impacts can therefore be expected.

### ***Additional Mitigation Measures & Changes to the EMPr***

No additional or changed mitigation or avoidance measures in addition to those specified in the original EIA specialist study (dated Jan 2018) are recommended.

### ***Conclusions & Summary Findings***

- The current amendment application compares the impact of the original Phezukomoya WEF consisting of 55 turbines with the combined impact, associated with the Phezukomoya Split facility consisting of 35 turbines and the Hartebeesthoek West facility consisting of 12 turbines. The assessed impacts for each scenario are similar and there are no significant differences in the impact between the authorised 55 turbine facility and the proposed amended, consisting of 47 turbines, and split between two facilities within the same development area as the original Phezukomoya facility.
- From an ecological perspective, the changes associated with the amendment are not seen as increasing the impact associated with the development. In addition, cumulative impacts associated with the amendment would be similar to the assessed impacts, and are considered acceptable.
- The original conclusions regarding the positive acceptability of the development is therefore also upheld for the amendment.
- No additional mitigation or avoidance measures are required for the amended layout.
- Given the above outcome, the Phezukomoya/Hartebeesthoek West Amendment is supported in terms of terrestrial ecology impacts.

Prepared by Simon Todd

20 August 2019




Pr.Sci.Nat  
SACNASP 400425/11.

---

## Short CV/Summary of Expertise – Simon Todd

---

 <p><b>3Foxes Biodiversity Solutions</b> <b>ECOLOGICAL SPECIALIST SERVICES</b> Assessment/Management/Research</p>	<p>Simon Todd <a href="#">Pr.Sci.Nat</a> Director &amp; Principle Scientist C: 082 3326502 O: 021 782 0377 <a href="mailto:Simon.Todd@3foxes.co.za">Simon.Todd@3foxes.co.za</a> 60 Forrest Way <a href="#">Glencairn</a> 7975</p>	<p>Ecological Solutions for People &amp; the Environment</p>
--	---	--

---

Simon Todd is Director and principal scientist at 3Foxes Biodiversity Solutions Pty Ltd (Reg. 2016/467883/07) and has over 20 years of experience in biodiversity measurement, management and assessment. He has provided specialist ecological input on more than 300 different developments distributed widely across the country, with extensive experience in wind and solar projects. Larger recent national or regional projects include input on the Wind and Solar SEA (REDZ) as well as the Eskom Grid Infrastructure (EGI) SEA and Karoo Shale Gas SEA. He is on the National Vegetation Map Committee as representative for the Nama and Succulent Karoo. Simon Todd is a recognised ecological expert and is a past chairman of the Arid-Zone Ecology Forum. Simon Todd is registered with the South African Council for Natural Scientific Professions (No. 400425/11).

### **Abbreviated CV:**

- Profession: Independent Ecological Consultant - Pr.Sci.Nat 400425/11
- Specialisation: Plant & Animal Ecology
- Years of Experience: 22 Years

### *Skills & Primary Competencies*

- Research & description of ecological patterns & processes in Nama Karoo, Succulent Karoo, Thicket, Arid Grassland, Fynbos and Savannah Ecosystems.
- Ecological Impacts of land use on biodiversity
- Vegetation surveys & degradation assessment & mapping
- Long-term vegetation monitoring
- Faunal surveys & assessment.
- GIS & remote sensing

### *Tertiary Education:*

- 1992-1994 – BSc (Botany & Zoology), University of Cape Town
- 1995 – BSc Hons, Cum Laude (Zoology) University of Natal
- 1996-1997- MSc, Cum Laude (Conservation Biology) University of Cape Town

### *Employment History*



- 2010-Present – Self-employed as consultant and sole proprietor of Simon Todd Consulting and then Director of 3Foxes Biodiversity Solutions, which provides ecological specialist services for conservation, research, management and development projects.
- 2007-Present – Senior Scientist (Associate) – Plant Conservation Unit, Department of Botany, University of Cape Town.
- 2004-2007 – Senior Scientist (Contract) – Plant Conservation Unit, Department of Botany, University of Cape Town
- 2000-2004 – Specialist Scientist (Contract) - South African National Biodiversity Institute
- 1997 – 1999 – Research Scientist (Contract) – South African National Biodiversity Institute

#### *General Experience & Expertise*

- Conducted a large number of fauna and flora specialist assessments distributed widely across South Africa. Projects have ranged in extent from <50 ha to more than 50 000 ha.
- Widely-recognized arid ecology specialist. Published numerous peer-reviewed scientific publications based on various ecological studies across the country. Past chairman of the Arid Zone Ecology Forum and current executive committee member.
- Extensive experience in the field and exceptional level of technical expertise, particularly with regards to GIS capabilities which is essential with regards to producing high-quality sensitivity maps for use in the design of final project layouts.
- Strong research background which has proved invaluable when working on several ecologically sensitive and potentially controversial sites containing some of the most threatened fauna in South Africa.
- Published numerous research reports as well as two book chapters and a large number of papers in leading scientific journals dealing primarily with human impacts on the vegetation and ecology of the arid and semi-arid parts of South Africa.
- Maintain several long-term vegetation monitoring projects distributed across Namaqualand and the karoo.
- Guest lecturer at two universities and have also served as an external examiner.
- Reviewed papers for more than 10 international ecological journals.
- Past chairman and current committee member of the Arid Zone Ecological Forum.
- SACNASP registered as a Professional Natural Scientist, (Ecology) No. 400425/11.

A selection of recent work is as follows:

#### *Specialist Assessments:*

#### **Strategic Environmental Assessments**

Co-Author. Chapter 7 - Biodiversity & Ecosystems - Shale Gas SEA. CSIR 2016.

Co-Author. Chapter 1 Scenarios and Activities – Shale Gas SEA. CSIR 2016.

Co-Author – Ecological Chapter – Wind and Solar SEA. CSIR 2014.

Co-Author – Ecological Chapter – Eskom Grid Infrastructure SEA. CSIR 2015.

Contributor – Ecological & Conservation components to SKA SEA. CSIR 2017.

*Specialist Fauna and Flora Assessments:*

**Solar Energy Developments:**

Hyperion PV 1-3, near Kathu, Northern Cape. Fauna & Flora EIA Assessment. Savannah Environmental 2019.

Aggeneys Solar PV 1 & 2, Aggeneys, Northern Cape. Fauna & Flora EIA Assessment. Savannah Environmental 2019.

Allepad PV 1-4, Upington, Northern Cape. Fauna & Flora EIA Assessment. Savannah Environmental 2019.

Gaetsewe Solar PV Project, Kathu, Northern Cape. Fauna & Flora EIA Assessment for EIA. Cape EAPrac 2018.

Mogara Solar PV Project, Kathu, Northern Cape. Fauna & Flora EIA Assessment for EIA. Cape EAPrac 2018.

Hotazel Solar, Hotazel, Northern Cape. Fauna & Flora EIA Assessment for EIA. Cape EAPrac 2018.

Sol Invictus PV-1-4 Power Plants, near Aggeneys. Fauna and Flora Assessment. Savannah Environmental 2016.

Illanga Karoshoek CSP 1-5 near Upington. Fauna and Flora Assessment. Savannah Environmental 2016.

Mogobe, Legoko & Kathu 75MW Solar PV Plants, near Kathu, Northern Cape. Fauna and Flora Assessment. Cape EAPrac. 2015.

Wolmarransstad Solar Energy Facility North West Province. Fauna & Flora Specialist Report for EIA. Savannah Environmental 2015

Humansrus Solar PV Energy Facility 1 Near Copperton, Northern Cape: Fauna & Flora Specialist Report for EIA. CapeEAPrac 2015.

Humansrus Solar PV Energy Facility 2 Near Copperton, Northern Cape: Fauna & Flora Specialist Report for EIA. CapeEAPrac 2015.

Dyasonsklip Solar Energy Facility 1 Near Upington, Northern Cape: Fauna & Flora Specialist Report for EIA. CapeEAPrac 2015.

Postmasburg Solar PV Energy Facility 2 and Associated Grid Connection Infrastructure, Postmasburg, Northern Cape. Fauna & Flora Specialist Report for EIA. CapeEAPrac 2015.

Joram Solar Vryheid PV Project, Northern Cape. Fauna & Flora Specialist Report for EIA. CapeEAPrac 2015.

Richtersveld Solar Farm and Associated Grid Connection Infrastructure. Fauna & Flora Specialist Report for EIA. CapeEAPrac 2015.

Re Capital 3 Solar Energy Facility and Associated Grid Connection Infrastructure, Dyason's Klip, Northern Cape. Fauna & Flora Specialist Report for EIA. CapeEAPrac 2013.

Bosjesmansberg Solar Energy Facility East of Copperton, Northern Cape Province. Fauna & Flora Specialist Report for EIA. Savannah Environmental 2013.

Proposed Commercial Concentrated Solar Power Tower Facility and Concentrated Photovoltaic Facility at Van Roois Vley Near Upington. WSP 2012.

Les Marais \ Buitenfontein 5MW Solar Energy Facility in the Free State: Terrestrial Fauna & Flora Specialist Study for Basic Assessment. Savannah Environmental 2013.

Stella Helpmekaar Solar Energy Facility in the North West Province: Terrestrial Fauna & Flora Specialist Study for Basic Assessment. Savannah Environmental 2013.

Wolmaransstad Municipality 5MW Solar Energy Facility in the North West Province: Terrestrial Fauna & Flora Specialist Study for Basic Assessment. Savannah Environmental 2013.

Heuningspruit PV1 and PV2 Solar Energy Facilities Near Koppies, Free State Province: Terrestrial Fauna & Flora Specialist Study for Basic Assessment. Savannah Environmental 2013.

Hibernia PV Solar Energy Facility near Lichtenburg: Terrestrial Fauna & Flora Specialist Study For Basic Assessment. Savannah Environmental 2013.

Steynsrus PV1 And PV2 Solar Energy Facilities: Terrestrial Fauna & Flora Specialist Study for Basic Assessment. Savannah Environmental 2013.

Konkoonsies PV Project, Northern Cape: Fauna & Flora Specialist Report for Impact Assessment. EScience Associates 2012.

Padrooi 13 Photovoltaic Solar Energy Facility, Northern Cape: Fauna & Flora Specialist Report for Impact Assessment. EScience Associates 2012.

Adams Photovoltaic Solar Energy Facility, Northern Cape: Fauna & Flora Specialist Report for Impact Assessment. EScience Associates 2012.

Klein Swart Bast PV Facility, Northern Cape: Fauna & Flora Specialist Report for Impact Assessment. EScience Associates 2012.

Khoi-Sun Solar Facility. Fauna & Flora Specialist Report for Impact Assessment. Cape EAPrac 2012.

Suurwater 62, Boesmanland 75mw Solar Farm, Aggeneys. Fauna & Flora Specialist Report for Impact Assessment. Cape EAPrac 2012.

Karoshhoek Solar Valley Development, Upington: Fauna & Flora Specialist Impact Assessment Report. Savannah Environmental. 2012.

O’Kiep 3 PV Solar Energy Facility on a Site In O’kiep Near Springbok, Northern Cape Province. Fauna & Flora Specialist Report for Basic Assessment. Savannah Environmental 2012.

Photovoltaic Solar Energy Facility on Voëlklip, South of Springbok. Fauna & Flora Specialist Report for Basic Assessment. Savannah Environmental 2012.

Namaqua Photovoltaic Solar Energy Facility on a Site North of Kamieskroon. Fauna & Flora Specialist Report for Basic Assessment. Savannah Environmental 2012.

Inca Graafwater Photovoltaic Solar Energy Facility, Graafwater, Western Cape Province. Faunal Ecology Specialist Report for Impact Assessment. Savannah Environmental 2012.

Aberdeen Solar Facility. Fauna & Flora Specialist Report for Basic Assessment. Specialist Report for Savannah Environmental. 2012.

Venetia Solar Facility. Fauna & Flora Specialist Report for Basic Assessment. Specialist Report for Savannah Environmental. 2012.

Southern Cross Solar Energy Facility: Southern Farm 425. Fauna & Flora Specialist Report for Basic Assessment. Specialist Report for Savannah Environmental. 2012.

Tutwa Solar Energy Facility: Portion 4 of Narries 7. Fauna & Flora Specialist Report for Basic Assessment. Specialist Report for Savannah Environmental. 2012.

Valleydora Photovolataic Solar Power Plant, Free State. Fauna & Flora Specialist Report. CSIR, 2012.

Reddersburg Solar Facility - Fauna & Flora Specialist Assessment. CSIR, 2012.

Melkvele Photovolataic Solar Power Plant. Fauna & Flora Specialist Report for Basic Assessment. Specialist report for ERM. 2012.

Ruinte Photovolataic Solar Power Plant. Fauna & Flora Specialist Report for Basic Assessment. Specialist report for ERM. 2012.

Genoegsaam Solar Park. Fauna & Flora Specialist Report for Basic Assessment. Specialist report for ERM. 2012.

Genoegsaam Solar Park. Fauna & Flora Specialist EIA Report. Specialist report for ERM. 2012.

Graspan Solar Facility. Fauna & Flora Specialist Report for Impact Assessment. Specialist report for ERM. 2012.

Olyven Kolk Solar Power Plant, Northern Cape: Botanical and Faunal Specialist Assessment. Specialist Report for Environmental Resources Management (ERM). 2011.

Skuitdrift Solar Facility. Fauna & Flora Specialist Report for Basic Assessment. Specialist Report for Cape EAPrac. 2012.

Beaufort West Solar Facility, Erf 7388 - Fauna & Flora Specialist Assessment. Specialist Report for Cape EAPrac. 2012.

Khoi-Sun Solar Facility. Fauna & Flora Specialist Scoping Report. Specialist Report for Cape EAPrac. 2012.

Boesmanland Solar Farm. Fauna & Flora Specialist Scoping Study. Specialist Report for Cape EAPrac. 2012.

Bitterfontein Solar Plant - Fauna & Flora Specialist Assessment. Specialist Report for Cape EAPrac. 2012.

#### **Wind Farm Developments:**

Redcap Impofu Wind Farms, East, West & North, Oyster Bay, Eastern Cape. Fauna and Flora EIA process. Aurecon 2018.

Tooverberg Wind Farm, Touwsrivier, Western Cape. Fauna and Flora EIA process. SiVest 2018.

Highlands WEFs, Somerset East, Eastern Cape Province. Fauna & Flora Basic Assessment. Arcus Consulting 2018.

Juno WEF, Strandfontein, Western Cape Province. Fauna and Flora EIA process. Arcus Consulting 2018.

Kay Vley 300MW WEF, Kleinsee, Northern Cape. Fauna and Flora EIA process. CSIR 2018.

Kuruman WEF 1 & 2, Kuruman, Northern Cape. Fauna and Flora EIA process. CSIR 2018.

Paulputs WEF, Pofadder, Northern Cape. Fauna and Flora EIA process. Arcus Consulting 2019.

Kokerboom WEF 1-4, Loeriesfontein, Northern Cape. Fauna and Flora EIA process. Aurecon 2017.

Leeuberg, Ithemba, Xha Boom, Graskoppies & Hartebeest Leegte WEFs, Loerinesfontein, Northern Cape. Fauna and Flora EIA process. SiVest 2017.

Komsberg East and Komsberg West Wind Farms and Associated Grid Connection Infrastructure: Fauna & Flora Specialist Impact Assessment Report. Arcus 2014.

Rietkloof Wind Farm and Associated Grid Connection Infrastructure: Fauna & Flora Specialist Impact Assessment Report. EOH 2016.

Brandvallei Wind Farm and Associated Grid Connection Infrastructure: Fauna & Flora Specialist Impact Assessment Report. EOH 2016.

Gunstfontein Wind Farm and Associated Grid Connection Infrastructure: Fauna & Flora Specialist Impact Assessment Report. Savannah Environmental 2016.

Mainstream South Africa Dwarsrug Wind Energy Facility: Fauna & Flora Specialist Impact Assessment Report. Sivest 2014.

Spitskop Wind Energy Facility near Cookhouse: Fauna & Flora Specialist Study for Impact Assessment. Savannah Environmental 2013.

Roggeveld Wind Energy Facility and Associated Grid Connection Infrastructure: Fauna & Flora Specialist Report for EIA. Savannah Environmental 2013.

Mainstream South Africa Springfontein Wind Energy Facility: Terrestrial Fauna & Flora Specialist Study for EIA. Savannah Environmental 2012.

Environmental Impact Assessment for the Establishment of the Wolseley Wind Farm, Western Cape Province. Fauna & Flora Specialist Report. Arcus Gibb 2012.

Proposed Eskom 300MW Kleinsee Wind Energy Facility. Fauna Specialist Report For Impact Assessment. Savannah Environmental 2012.

Proposed Inca Energy Swellendam Wind Energy Facility: Fauna Specialist Report For Impact Assessment. Savannah Environmental 2012.

Proposed Hartebeest Wind Energy Facility: Fauna & Flora Specialist EIA Report For Impact Assessment. Savannah Environmental 2016.

Terrestrial Ecology Specialist Study for the Proposed Establishment of a Renewable Energy Facility near Sutherland, Western and Northern Cape Provinces. Environmental Resources Management (ERM) 2011.

Roggeveld Wind Farm: Ecological and Biodiversity Assessment: Terrestrial Vertebrate Fauna & Botanical Specialist Study. Specialist Report for Environmental Resources Management (ERM). 2011.

Zen Wind Energy Facility. Fauna & Flora Specialist Impact Assessment Report. Savannah Environmental. 2012.

Proposed Project Blue Wind and Solar Energy Facility, Near Kleinsee. Fauna Specialist Report For Impact Assessment. Savannah Environmental 2012.



Garob Wind Farm: Fauna & Flora Specialist Report for Impact Assessment. Savannah Environmental 2012.

Loeriesfontein Wind Energy Facility – Substation & Grid Connection. Fauna & Flora Specialist Report for Basic Assessment. Savannah Environmental 2012.

Noblesfontein Wind Energy Facility, Victoria West. Ecological Walk-Through Report. Savannah Environmental 2012.

Gouda Wind Energy Facility. Fauna And Flora Walk Through Report. Savannah Environmental 2012.

Klawer Wind Farm: Ecological and Biodiversity Assessment: Terrestrial Vertebrate Fauna & Botanical Specialist Study. Specialist Report for Environmental Resources Management. 2011.

Lambert's Bay Wind Farm: Ecological and Biodiversity Assessment: Terrestrial Vertebrate Fauna & Botanical Specialist Study. Specialist Report for Environmental Resources Management. 2011.

Richtersveld Wind Farm: Ecological and Biodiversity Assessment: Terrestrial Vertebrate Fauna & Botanical Specialist Study. Specialist Report for Environmental Resources Management (ERM). 2011.

Witberg Wind Farm: Ecological and Biodiversity Assessment: Terrestrial Vertebrate Fauna & Botanical Specialist Study. Specialist Report for Environmental Resources Management (ERM). 2011.

#### **Electrical Transmission Infrastructure**

Vryheid Grid Strengthening Project, near Swellendam. Nsovo Environmental Consultants. 2016.

Juno-Gromis 400kV Power Line. Ecological Walk-Through study for EMPr. Nsovo Environmental Consultants. 2017.

Proposed Weskusfleur Substation at Koeberg. Lidwala Consulting Engineers. 2015.

Proposed Juno-Aurora 765kV Power Line in the Western Cape: Fauna & Flora Specialist Report for Impact Assessment. Nzumbulolo Heritage Solutions 2015.

The proposed Mookodi Integration Phase 2 132kV Power Lines and Ganyesa Substation near Vryburg, North West Province: Fauna & Flora Specialist Basic Assessment Report. Sivest 2014.

Basic Assessment Process for the Proposed Construction of the Transnet 7km 50 kV Power Line from Eskom Juno Substation to the proposed new Transnet Juno Traction Feeder Substation. Nsovo Environmental Consulting. 2014.

Basic Assessment Process for the Proposed Construction of the Transnet 5km 50 kV Power Line from Eskom Aries Substation to the proposed new Transnet Aries Traction Feeder Substation. Nsovo Environmental Consulting. 2014.

Basic Assessment Process for the Proposed Construction of the Transnet 15km 50 kV Power Line from Eskom Helios Substation to the proposed new Transnet Helios Traction Feeder Substation. Nsovo Environmental Consulting. 2014.

Burchell-Caprum-Mooidraai 132kV Power Line - Fauna & Flora Specialist Report for Basic Assessment. Savannah Environmental 2014.

Proposed Re-Alignment Of The Koeberg – Ankerlig VPower Line: Fauna & Flora Specialist Report For Basic Assessment. Savannah Environmental 2014.

Grid Connection for Redstone Solar Thermal Energy Plant- Redstone Solar Thermal to Olien Mts: Fauna & Flora Specialist Basic Assessment Report. SiVest 2014.

Grid Connection for Mainstream South Africa Perdekraal Wind Energy Facility. Fauna & Flora Specialist Report for Basic Assessment. ERM 2014.

Karoshhoek Grid Integration Infrastructure. Fauna & Flora Specialist Report for Basic Assessment. Specialist Report for Savannah Environmental. 2012.

Garob to Kronos Power Line - Fauna & Flora Specialist Report for Basic Assessment. Specialist Report for Savannah Environmental. 2012.

Loeriesfontein Wind Energy Facility – Substation & Grid Connection. Fauna & Flora Specialist Report for Basic Assessment. Specialist Report for Savannah Environmental. 2012.

Gouda Wind Energy Facility – Grid Connection. Walk-Through of Overhead Power Line - Gouda WEF to Eskom Windmill Substation. Specialist Report for Savannah Environmental. 2012.

Proposed Kappa-Omega 765 kV Transmission Line. Fauna, Flora & Ecology Walk-Through Report. Specialist Report for ACER Africa. 2013.

#### **Infrastructure & Mining Developments:**

Environmental Impact Assessment for the Proposed Putsberg Open Cast Mine Near Pofadder, Northern Cape. Fauna & Flora Specialist Report for EIA. Ecopartners 2013.

Proposed Establishment of the Gamsberg Zinc Mine, Concentrator Plant and Associated Infrastructure near the Town of Aggeneys, Northern Cape. Fauna & Flora Specialist Report For ESIA. ERM 2013.

Pella Water Board – Infrastructure Upgrade. Fauna & Flora Specialist Report for Basic Assessment. Environmental Resources Management 2012.

Transnet Manganese Ore Line Upgrade. Fauna & Flora Specialist Report for Basic Assessment. Environmental Resources Management 2012.

Proposed Vryburg Wastewater Treatment Works: Terrestrial Fauna & Flora Specialist Study for Basic Assessment. Endemic Vision 2013.

Proposed Mamatwane Compilation Yard, Northern Cape: Fauna & Flora Specialist Report for Impact Assessment. Environmental Resources Management 2013.

Rare Earth Separation Plant Near Vredendal, Western Cape Province. Fauna & Flora Specialist Report for Basic Assessment. Savannah Environmental 2012.

Proposed Mocke Poultry Farm: Fauna & Flora Specialist Report for Basic Assessment. Enviroworks 2015.

Basic Assessment for proposed Neotel Fibre Optic Cable Route 1 from George to Oudtshoorn. Fauna & Flora Specialist Report for Basic Assessment. Enviroworks 2015.

Basic Assessment for proposed Neotel Route 2 Fibre Optic Cables from Prince Albert Road to Oudtshoorn via the N12. Enviroworks 2015.

Basic Assessment for proposed Neotel Route 3 Fibre Optic Cables from Oudtshoorn to George via R328 and R102. Enviroworks 2015.

Basic Assessment for proposed Neotel Route 4 Fibre Optic Cables from Laingsburg to Oudtshoorn via Ladismith along the R323 and R62. Enviroworks 2015.

Improvements to the Ou Kaapse Weg / Silvermine Road Intersection. Specialist Faunal Study For Basic Assessment. Khula Environmental Consultants, 2012.

Upgrading of Tourism Facilities at Goegap Nature Reserve. Specialist Ecological Assesment. Van Zyl Environmental Consultants. 2012.

Plant Sweeps on Portion 2 of the Farm Demaneng 546, Kuruman District, Northern Cape Province for SA Manganese. 2011.

---



# environmental affairs

Department:  
Environmental Affairs  
REPUBLIC OF SOUTH AFRICA

## DETAILS OF THE SPECIALIST, DECLARATION OF INTEREST AND UNDERTAKING UNDER OATH

File Reference Number: NEAS Reference Number: Date Received:	(For official use only)
	DEA/EIA/

Application for authorisation in terms of the National Environmental Management Act, Act No. 107 of 1998, as amended and the Environmental Impact Assessment (EIA) Regulations, 2014, as amended (the Regulations)

### PROJECT TITLE

San Kraal and Phezukomoya Wind Energy Facility Amendment, Split and revised grid connection BA.

### Kindly note the following:

1. This form must always be used for applications that must be subjected to Basic Assessment or Scoping & Environmental Impact Reporting where this Department is the Competent Authority.
2. This form is current as of 01 September 2018. It is the responsibility of the Applicant / Environmental Assessment Practitioner (EAP) to ascertain whether subsequent versions of the form have been published or produced by the Competent Authority. The latest available Departmental templates are available at <https://www.environment.gov.za/documents/forms>.
3. A copy of this form containing original signatures must be appended to all Draft and Final Reports submitted to the department for consideration.
4. All documentation delivered to the physical address contained in this form must be delivered during the official Departmental Officer Hours which is visible on the Departmental gate.
5. All EIA related documents (includes application forms, reports or any EIA related submissions) that are faxed; emailed; delivered to Security or placed in the Departmental Tender Box will not be accepted, only hardcopy submissions are accepted.

### Departmental Details

#### Postal address:

Department of Environmental Affairs  
Attention: Chief Director: Integrated Environmental Authorisations  
Private Bag X447  
Pretoria  
0001

#### Physical address:

Department of Environmental Affairs  
Attention: Chief Director: Integrated Environmental Authorisations  
Environment House  
473 Steve Biko Road  
Arcadia

Queries must be directed to the Directorate: Coordination, Strategic Planning and Support at:  
Email: [EIAAdmin@environment.gov.za](mailto:EIAAdmin@environment.gov.za)

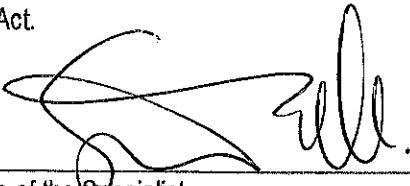
**1. SPECIALIST INFORMATION**

Specialist Company Name: B-BBEE	3Foxes Biodiversity Solutions		
	Contribution level (indicate 1 to 8 or non-compliant)	Level 4	Percentage Procurement recognition 100%
Specialist name:	Simon Todd		
Specialist Qualifications:	BSc (Bot. & Zool.) BSC Hons (Zool.) MSc Conservation Biology		
Professional affiliation/registration:	SACNASP Pr.Sci.Nat 400425/11		
Physical address:	23 De Villiers Road, Kommetjie		
Postal address:	23 De Villiers Road, Kommetjie		
Postal code:	7975	Cell:	082 3326502
Telephone:		Fax:	
E-mail:	Simon.Todd@3foxes.co.za		

**2. DECLARATION BY THE SPECIALIST**

I, Simon Todd, declare that –

- I act as the independent specialist in this application;
- I will perform the work relating to the application in an objective manner, even if this results in views and findings that are not favourable to the applicant;
- I declare that there are no circumstances that may compromise my objectivity in performing such work;
- I have expertise in conducting the specialist report relevant to this application, including knowledge of the Act, Regulations and any guidelines that have relevance to the proposed activity;
- I will comply with the Act, Regulations and all other applicable legislation;
- I have no, and will not engage in, conflicting interests in the undertaking of the activity;
- I undertake to disclose to the applicant and the competent authority all material information in my possession that reasonably has or may have the potential of influencing - any decision to be taken with respect to the application by the competent authority; and - the objectivity of any report, plan or document to be prepared by myself for submission to the competent authority;
- all the particulars furnished by me in this form are true and correct; and
- I realise that a false declaration is an offence in terms of regulation 48 and is punishable in terms of section 24F of the Act.



Signature of the Specialist

3Foxes Biodiversity Solutions

Name of Company:

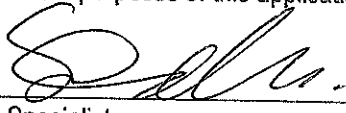
03/09/2019

Date



3. UNDERTAKING UNDER OATH/ AFFIRMATION

I, Simon Todd, swear under oath / affirm that all the information submitted or to be submitted for the purposes of this application is true and correct.



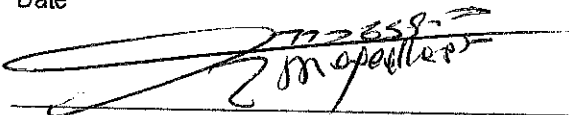
Signature of the Specialist

3Foxes Biodiversity Solutions

Name of Company

03/09/2019

Date



Signature of the Commissioner of Oaths

03/09/2019

Date

